

**A Complete Real Estate Service**

ESTABLISHED 1926



FRANK A. DRUMM, President

1014 Lincoln-Alliance Bank Building

Phone STONE 633

Evenings and Sundays CHAR. 284

**EGBERT F. ASHLEY CO.**

ESTABLISHED 1852

**INSURANCE**

212 UNION TRUST BUILDING

19 MAIN ST., W.

Telephone Main 444

**HENRY T. PERKINS  
REAL ESTATE CO.**

PROPERTY MANAGEMENT

SALES — RENTALS — LEASES

PHONE MAIN 3309

**31 EXCHANGE STREET**

NOT TO BE PHOTOCOPIED

## How to Use the Directory

The City Directory is really a cooperative catalog of the inhabitants, business interests, and institutions of the City. But the very mass of the information contained, until one learns how to use it, may appear to be an obstacle to those unfamiliar with its arrangement.

Chambers of Commerce receive thousands of calls for information, many of which might be answered with a saving of time to all concerned by a simple reference to the Directory, if inquirers thought to look there first. At the suggestion of one Chamber, the following list of typical questions which can usually be answered by referring to the Directory, was drawn up. It is interesting, educational, and should help users to get more value from the Directory.

### *(Typical Questions)*

#### **About an Individual**

How does he spell his name?  
 What is his correct postal address?  
 Is he married?  
 What is his wife's name?  
 Where does he live?  
 How long has he lived there?  
 Who are his neighbors?  
 Does he own his own home?  
 What is it  
 What does  
 Where do  
 Who does  
 How long  
 Is he "he"  
 How man  
 Does he o  
 Is he a m  
 Is he an c  
 Is he Secr  
 Who else  
 Is the wor  
 What was  
 If removed from the City, where to.  
 If deceased since last issue, date?

### *(Department of Directory where the answer can usually be found)*

Alphabetical  
 Alphabetical and House  
 Alphabetical  
 Alphabetical  
 Alphabetical  
 (Back File of Directories)  
 House Directory  
 House Directory  
 Alphabetical  
 House  
 Directories)  
 same address)  
 Classified  
 Alphabetical

## **Rochester Public Library**

### **Reference Book**

### **Not For Circulation**

#### **About a Business Concern**

What is the correct name?  
 What is the correct address?  
 Just what do they do?  
 Is it a partnership or a corporation?  
 Who are the partners? (if a firm)  
 Who are chief officers? (if incorporated)  
 When was the company incorporated?  
 When were they established?  
 Who else is in the same or similar lines?  
 Who are the officials of the various Banks?

Alphabetical  
 Alphabetical  
 Alphabetical, Classified & Ads.  
 Alphabetical  
 Alphabetical  
 Alphabetical  
 (Back file of Directories)  
 Classified  
 Reference Section

(Note: If name is in bold type, saying "See page—" much more detailed information may be found by referring to that space, such as follows:)

What are their specialties?  
 Describe their products and services?  
 What have they done to make information accessible to the seeker?

Classified and Reference  
 Reference Section  
 Classified and Reference Sect.



3 9077 04695 3728

ST

### About a Locality

Quickest way to get there?	House Directory and Map
How do the Streets run?	House Directory and Map
Who lives at a given address?	House Directory
What is the character of the neighborhood?	House Directory & Alpha.
Is it a "home-owners" section?	House Directory
Just where in the block is it located?	House Directory
What is the nearest street corner?	House Directory
What is the nearest store, church, school, garage, or other place of business?	House Directory
What and Where are the Public and Office Buildings?	House Directory
If a business location, what business?	Alphabetical & Classified
If an apartment, who are those on different floors?	House Directory
If an office building, who are in what rooms?	House Directory

### About a Society, Church, Club or Association

What is the complete name?	Alphabetical & Classified
Where are their headquarters?	Alphabetical
Who are the principal officers?	Alphabetical & Classified
When are stated Meetings?	Alphabetical
What are the Churches and where located?	Classified
Who are the pastors?	Alphabetical

### About City, County, State and National Depts.

What are the various Departments?	Miscellany
Where are they located?	Alphabetical & Miscellany
Who are the officials?	Miscellany
What are Court terms, Justices, Officials, etc?	Miscellany
Where is Postal Information?	Miscellany
Where are latest Population figures?	Miscellany
Where is Statistical Review and information about the city as a whole? (By Chamber of Commerce)	Miscellany
Where are the Parks and Playgrounds located?	Miscellany
Where are the Ward Boundaries?	Miscellany
Where are the Cemeteries?	Classified

The above list of typical questions which may be answered by the City Directory could be expanded indefinitely in the ordinary course of buying, selling, business and personal contacts. A knowledge of what is here contained, and how it may be used, should be useful to any citizen.

*The Directory supplies the information:*

*The User must supply the imagination to adapt it to its needs*

Sampson & Murdock Company  
Publishers

## How Many Changes in a Year?



Out of every 100 People  
listed in last Directory—



16% to 18% move away,  
or die



New People, equal to 17%  
to 19% move into town, or  
reach listing age



26% to 29% more change their  
address, or their jobs, or some  
other vital fact that affects  
their listing

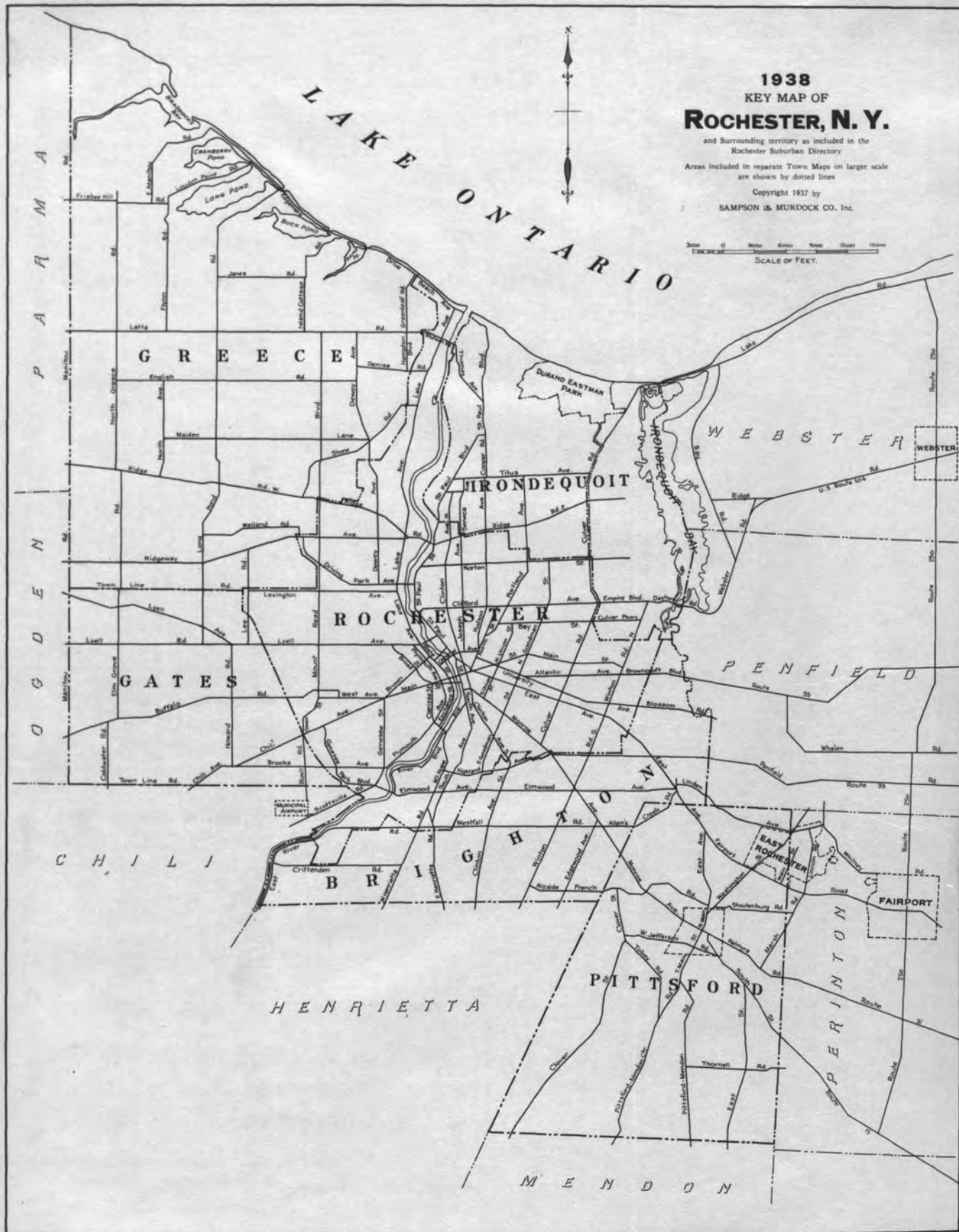


59% to 67% of the People  
listed have new information in  
some particular, which can be  
surely found only in the **NEW  
DIRECTORY**

*Note: These figures are from repeated checks in numerous cities, and do  
not vary 5% in any year*

These people are your Customers  
That is why Directories are made





# Rochester Suburban Directory

*For the year 1938*

INCLUDING THE TOWNS OF

Brighton, East Rochester, Fairport, Gates, Greece,  
Irondequoit, Pittsford and Webster

Town of Webster first added in this edition

A Supplement to the Rochester Directory

Containing

**Alphabetical Section** (White Pages) For each town, giving names, occupations and addresses of all persons over twenty years of age, business and post office addresses.

**Classified Business Finder** (Page 81) Of all firms or individuals in business or profession under listing best describing their service or product.

**Reference Department** (Page 33) Detailed description of leading concerns, for buyers' information.

**House and Street Directory** (Pink Section Page 681) A complete list of streets, giving location of intersections and enabling one to tell at once between what streets a given number lies, and the quickest way to get there. All business houses, individuals in business, and householders are listed in numerical order upon their respective streets. Resident property owners are designated, and Post Office address is given for each street. A feature of great value and convenience.

**A VALUABLE FEATURE:**

**HOMES OWNED BY OCCUPANTS INDICATED BY SYMBOL®**

(Note: this information is as given to our canvassers, and is not guaranteed by us. It should be of value as an indication, but not taken as legal proof of title.)

(For detailed index to contents see page 7)

Volume



IX

**SOLD BY SUBSCRIPTION**

**SAMPSON & MURDOCK CO., Inc., Publishers**

**Established 1846**

**729 Powers Building, Rochester, N. Y.**

**Printed in U. S. A.**

**Copyright 1937 by Sampson & Murdock Co., Inc.**

# NAMES IN DIRECTORY OF 1938

	Brighton	East Rochester	Fairport	Gates	Greece	Irondequoit	Pittsford	Webster	*Total
*In Alphabetical Section 1938 .....	6,276	3,488	2,577	2,196	6,209	10,571	2,051	1,275	34,643
In Alphabetical Section 1937 .....	5,497	3,463	2,539	2,092	6,078	10,680	2,127	—	32,476
Increase of names .....	779	25	38	104	131	†109	†76	—	2,167

\*This number includes the names of 170 individuals in Brighton, 126 in East Rochester, 88 in Fairport, 166 in Gates, 262 in Greece, 292 in Irondequoit and 69 in Pittsford who have died, with date of death, or who have removed from the city since the 1937 directory was issued.

†Denotes decrease.

## CALENDAR

1938

1938

1939

	Sun.	Mon.	Tues.	Wed.	Thurs.	Fri.	Sat.		Sun.	Mon.	Tues.	Wed.	Thurs.	Fri.	Sat.		Sun.	Mon.	Tues.	Wed.	Thurs.	Fri.	Sat.
Jan.	1	2	3	4	5	6	7	Jan.	1	2	3	4	5	6	7	Jan.	1	2	3	4	5	6	7
	8	9	10	11	12	13	14		8	9	10	11	12	13	14		8	9	10	11	12	13	14
	15	16	17	18	19	20	21		15	16	17	18	19	20	21		15	16	17	18	19	20	21
	22	23	24	25	26	27	28		22	23	24	25	26	27	28		22	23	24	25	26	27	28
	29	30	31						29	30	31						29	30	31				
Feb.	1	2	3	4	5	6	7	Aug.	1	2	3	4	5	6	7	Feb.	1	2	3	4	5	6	7
	8	9	10	11	12	13	14		7	8	9	10	11	12	13		8	9	10	11	12	13	14
	15	16	17	18	19	20	21		14	15	16	17	18	19	20		15	16	17	18	19	20	21
	22	23	24	25	26	27	28		21	22	23	24	25	26	27		22	23	24	25	26	27	28
	29	30	31						28	29	30	31					26	27	28				
Mar.	1	2	3	4	5	6	7	Sept.	1	2	3	4	5	6	7	Mar.	1	2	3	4	5	6	7
	8	9	10	11	12	13	14		4	5	6	7	8	9	10		8	9	10	11	12	13	14
	15	16	17	18	19	20	21		11	12	13	14	15	16	17		15	16	17	18	19	20	21
	22	23	24	25	26	27	28		18	19	20	21	22	23	24		19	20	21	22	23	24	25
	29	30	31						25	26	27	28	29	30			26	27	28	29	30	31	
Apr.	1	2	3	4	5	6	7	Oct.	1	2	3	4	5	6	7	Apr.	1	2	3	4	5	6	7
	8	9	10	11	12	13	14		2	3	4	5	6	7	8		2	3	4	5	6	7	8
	15	16	17	18	19	20	21		9	10	11	12	13	14	15		9	10	11	12	13	14	15
	22	23	24	25	26	27	28		16	17	18	19	20	21	22		16	17	18	19	20	21	22
	29	30	31						23	24	25	26	27	28	29		23	24	25	26	27	28	29
May	1	2	3	4	5	6	7	Nov.	1	2	3	4	5	6	7	May	1	2	3	4	5	6	7
	8	9	10	11	12	13	14		6	7	8	9	10	11	12		7	8	9	10	11	12	13
	15	16	17	18	19	20	21		13	14	15	16	17	18	19		14	15	16	17	18	19	20
	22	23	24	25	26	27	28		20	21	22	23	24	25	26		21	22	23	24	25	26	27
	29	30	31						27	28	29	30					28	29	30	31			
June	1	2	3	4	5	6	7	Dec.	1	2	3	4	5	6	7	June	1	2	3	4	5	6	7
	8	9	10	11	12	13	14		4	5	6	7	8	9	10		4	5	6	7	8	9	10
	15	16	17	18	19	20	21		11	12	13	14	15	16	17		11	12	13	14	15	16	17
	22	23	24	25	26	27	28		18	19	20	21	22	23	24		18	19	20	21	22	23	24
	29	30	31						25	26	27	28	29	30	31		25	26	27	28	29	30	31

## PUBLISHERS' NOTE

The information in this book is gathered as far as possible by actual canvass, and is compiled in a way to ensure maximum accuracy. While the Publishers will in no way be held responsible for any errors that may occur, they will be glad to have any inaccuracies brought to their attention, so that they may be corrected in succeeding editions.

Sampson & Murdock Co., Inc., Publishers.

## UNITED STATES COPYRIGHT LAW

In Force On and After July 1, 1909

Section 28.—That any person who wilfully and for profit shall infringe any copyright secured by this Act, or who shall knowingly and wilfully aid or abet such infringement, shall be deemed guilty of a misdemeanor, and upon conviction thereof shall be punished by imprisonment for not exceeding one year, or by a fine of not less than one hundred dollars nor more than one thousand dollars, or both, in the discretion of the court.

R  
 2917.4788  
 R 6762  
 v. 9  
 1938

# INDEX TO CONTENTS

ROCHESTER  
 LIBRARY

	PAGE
Abbreviations .....	162
Advertising Department .....	33
Alphabetical Directory .....	163, 251, 307, 347, 383, 471, 623, 659
Apartment Houses .....	82
Assessors .....	161, 249, 305, 345, 381, 469, 621, 657
Association North American Directory Publishers .....	X
Blocks and Buildings .....	130
Brighton Directory .....	161
Business Finder .....	81
Calendar .....	6
Cemeteries .....	91
Churches .....	91
City Statistical Review .....	10
Clubs .....	95
Constables .....	161, 345, 621, 657
Coroners .....	16
County Court .....	17
County Officers .....	15
Deputy Sheriffs .....	16
East Rochester Directory .....	249
Fairport Directory .....	305
Fire Department .....	161, 249, 305, 345, 381, 469, 621, 657
Gates Directory .....	345
Greece Directory .....	381
Halls .....	130
House Directory .....	681, 705, 717, 729, 741, 769, 813, 825
Index to Advertisers .....	8
Irondequoit Directory .....	469
Jail .....	16
Justices .....	161, 249, 305, 345, 381, 469, 621, 657
Libraries .....	118
Number of Names in Directory .....	6
Parcel Post .....	20
Penitentiary .....	16
Pittsford Directory .....	621
Police Department .....	249, 305, 381, 469, 621, 657
Population of New York State .....	11
Population of Rochester and Monroe County .....	17
Post Offices .....	21
Public Buildings .....	130
Public Welfare Dept. ....	16, 161, 249, 305, 345, 381, 469, 621, 657
Rates of Postage .....	18
Schools .....	161, 249, 305, 345, 381, 469, 621, 657
Sheriffs and Deputies .....	16
Street Finding List .....	677
Street and House Directory .....	681, 705, 717, 729, 741, 769, 813, 825
Supervisors .....	15, 161, 249, 305, 345, 381, 469, 621, 657
Surrogate Court .....	17
Tax Collectors .....	345, 469
Town Officers .....	161, 249, 305, 345, 381, 469, 621, 657
Webster Directory .....	657

102 37ch-Ba S-



ADVERTISING

CLERK

INDEX TO ADVERTISEMENTS

	PAGE
Abbott, Proctor & Paine, 16 Clinton av S., Rochester.....	47
Alliance Realty Corp. 183 Main E. rm 1014, Rochester.....	front cover and 70
Alling & Miles Inc. 82 Stone, Rochester.....	35
Ashley Egbert F. Co. 19 Main W., Rochester.....	front cover
Ayer & Streb Inc. 77 StPaul 3d fl., Rochester.....	64
Barnard, Porter & Remington 9-11-13 North Water, Rochester.....	68
Bender Bros. 301 Alexander, Rochester.....	54
Bietry Herbert J. 183 Main E., Rochester.....	70
Bohachek E. S. Inc. 130 Clinton av S., Rochester.....	back cover
Bonbright George D. B. & Co. 16 Main W, Rochester.....	47
Brighton Place Dairy Co. Inc. 45 Fulton av. Rochester.....	top lines and 52
Brown Brothers Company, 891 Garson av. Rochester.....	67
Burr & Starkweather Co. 39-57 MtHope av. Rochester.....	34
Catholic Courier & Journal Inc. 50 Chestnut 5th floor, Rochester.....	66
Central Trust Co. 25 Main E., Rochester.....	37
Chase Brothers Company, 36 StPaul, Rochester.....	67
Clements James C. Inc. 409 Powers bldg. Rochester.....	60
Cool Chevrolet Corp. 360 Culver rd. Rochester.....	36
Daily Record Co. The, 29 N. Water, Rochester.....	66
Dana, Howard C. & Co. 130 Main E., Rochester.....	59
Democrat & Chronicle, 59 Main E., Rochester.....	65
East Rochester Herald, 150 W. Commercial, E. Rochester.....	66
East Side Savings Bank of Rochester, Main E. at Clinton av. S., Rochester.....	43
Emerson Paul E. Co. 6 Clinton av. S., Rochester.....	back bone
Foley Harold K. 7 E. Main, Webster.....	62
Forman B. Co. 46 Clinton av. S., Rochester.....	52
Gamrod-Harman Co. Inc. 75 Exchange, Rochester.....	67
Genesee Valley Trust Co. 45 Exchange at Broad W., Rochester.....	38
Georgian Bay Lumber Co. Inc. 181 Humboldt, Rochester.....	63
Goldman David Co. Inc. 6 State rm 105, Rochester.....	62
Goodell Alfred L. 59 W. Main, Webster.....	62
Graves H. B. Co. Inc. 78 State, Rochester.....	top lines and 56
Gray J. R. 711 Madison, E. Rochester.....	68
Green T. H. Electric Co. Inc. 31 N. Water, Rochester.....	53
Hall Realty Co. 16 Main W., Rochester.....	71
Hanna John R. Funeral Home, 1826 Ridge rd E., Rochester.....	54
Haubner and Stallknecht, 828 Jay, Rochester.....	55
Hazard Geo. E. Co. Inc., 546-548 E. Main, Rochester.....	58
Herrick Lumber Co. Inc. 1030 Main E., Rochester.....	63
Heughes F. L. & Co. Inc. 1029 Lyell av., Rochester.....	72
Hoselton Chevrolet Co. 161 E. Commercial, E. Rochester.....	35
Howe & Rogers Co. 89-91 Clinton av. S., Rochester.....	top lines and 57
Irondequoit Coal & Supply Co. 149 Ridge rd E. near R. W. & O. tracks, Rochester. 50	
Jeffreys L. A. Co. 32 Chestnut, Rochester.....	top and botton edge
Jenkins & Macy Co. 42 East av., Rochester.....	50
Johnston James Agency Inc. 130 Main E., Rochester.....	59
Keller J. B. Sons Inc. 28 Clinton av N., Rochester.....	53
King Harry M. 183 Main E., Rochester.....	71
Klem Chevrolet, 28 W. Main, Webster.....	36
Lange Fuel Service Inc. 326 Main E., Rochester.....	50
Laube Electric Corporation, 191-193 East av., Rochester.....	53
Lincoln-Alliance Bank & Trust Co. 183 Main E. at Stone, Rochester.....	top lines and 39

## INDEX TO ADVERTISEMENTS

9

	PAGE
Lucas & Dake Co. 31 Exchange rm 201, Rochester.....	61
McCurdy & Co. Inc. 275-291 Main E., Rochester.....	52
McIntosh C. E. Corp. 23 Exchange, Rochester.....	71
McKay Harry J. 25 Main E., Rochester.....	60
Maier's L. W. Sons, 870 Clinton av. N., Rochester.....	54
Martin A. N. Sons Inc. 111 Commercial, Webster.....	48
Mason Russel B. Co. 205 North av., Webster.....	51
Mattle A. J. & Son, 300 Cumberland, Rochester.....	55
Mechanics Savings Bank of Rochester N. Y. The, 21 Exchange, Rochester.....	46
Monroe County Savings Bank, 35 State, Rochester.....	44
Morse Sash & Door Co. 101 Ford cor. Waverly pl., Rochester.....	48
Morse Wm. B. Lumber Co. 340 Main W., Rochester.....	63
Northway Thomas J. Inc. 100 Exchange, Rochester.....	35
Ontario Coal Co. Inc., Lake rd., Sea Breeze, Rochester.....	51
Paviour R. S. & Son Inc. 183 Main E., Rochester.....	59
Perkins Erickson & Co. 16 Main W., Rochester.....	47
Perkins Henry T. Real Estate Co. 31 Exchange rm 403, Rochester.....	front cover
Pieters Dry Cleaning, 65 W. Main, Webster.....	49
Prens Carting & Storage, 434-460 State, Rochester.....	56
Quinby Air Conditioning Corp. 618 E. Main, Rochester.....	34
Rochester Abendpost, 237 Andrews, Rochester.....	66
Rochester Gas & Electric Corporation, 89-91 East av., Rochester, 124 W. Commercial, E. Rochester and 19 E. Main, Webster.....	top lines
Rochester Lime & Cement Corp. 174 Colvin, Rochester.....	48
Rochester Packing Co. Inc. 900 Maple, Rochester.....	70
Rochester Savings Bank, Main W. at Fitzhugh S., Rochester.....	45
Rochester Times-Union, Times sq. Broad W. cor Exchange, Rochester.....	65
Rochester Trust & Safe Deposit Co. Main W. at Exchange, Rochester .. . . .	back cover and 40
Rosenbauer Glenn, 36 Commercial, Webster.....	70
Scheer E. J. Inc. 259 Main E. at Cortland opp. Sibley's, Rochester.....	62
Scheuerman C. F. Sons, 230 Brown, Rochester.....	54
School of Commerce, 362 East av., Rochester.....	top lines and 72
Security Trust Company of Rochester, Main E. at Water S., Rochester.....	41
Shafer Co. 27-29 Gibbs, Rochester.....	57
Sherwin-Williams Co. The, 53 State, Rochester.....	68
Sibley, Lindsay & Curr Co. 228-280 Main E., Rochester.....	top lines
Slocum George A. Agency Inc. 26 S. Main, Fairport.....	60
Staub & Son Inc. 951 E. Main, Rochester.....	49
Steve Coal Co. Inc. 413 Main, E. Rochester.....	34
Steve Motors, 413 Main, E. Rochester.....	34
Streb Norbert Co. 16 Main W. rm 223, Rochester.....	71
Summerhays Wm. Sons Corp. 614-632 Clinton av. S., Rochester.....	52
Temperato Peter, 114 W. Commercial, E. Rochester.....	53
Temple Fur Store Inc. The, 52 North, Rochester.....	57
Tice & Gates, 347-349 East av., Rochester.....	49
Union Trust Co. 19 Main W., Rochester.....	back cover and 42
Upton Cold Storage Co. Inc. The, 38 Cliff, Rochester.....	72
VanHoesen F. P. Co. Inc. 41-45 StPaul, Rochester .. . . .	top lines and 67
Viall George I. & Son, 5-7 N. Water, Rochester.....	68
Vick Clarence A. 42 East av. Rochester.....	61
Webster Auto Corp. 50 North av., Webster.....	36
West Chas. C. Coal Co. Inc. 281 N. Union, Rochester.....	50
Wheeler Chevrolet Corp. 120 N. Main, Fairport.....	34
Whiting-Buick Inc. 342-352 East av. Rochester.....	36
Wilson George H. 36 West av. Fairport.....	61
Witmer William H. 3 E. Main, Webster.....	60
Wolfert Brothers, 335 E. Main, Rochester.....	61

# CITY DIRECTORY STATISTICAL REVIEW

*Suggested and Planned by American Community Advertising Association*

*Adopted by Association of North American Directory Publishers*

*Compiled by Statistical Bureau, Rochester Chamber of Commerce*

## ROCHESTER, NEW YORK—"The Flower City"

**Form of Government:** City Manager.

**Population:** 328,132, Federal Census 1930.

**Predominating Nationalities:** Aside from Native: Italian, German, Canadian, Russian, Polish and English.

**Area:** Thirty-four square miles. Altitude 500 to 679 feet.

**Assessed Valuation:** 1937, \$619,717,093. Tax rate \$27.42 per thousand in 1937.

**Parks:** 33 with 1,777 acres valued at \$3,000,000. Public baseball diamonds and tennis courts in all of the larger parks, and public golf links at Genesee Valley and Durand-Eastman. In addition there are ten private golf courses close to the city.

**City's Net Debt:** 1936, \$60,676,369.

**Financial:** Rochester has four savings banks, and six trust companies with total deposits of \$353,700,616. Resources not including buildings and equipment amounted to \$412,580,599. Clearings for 1936 aggregated \$394,483,743.

**Post Office Receipts:** Year ending June 30, 1937, \$2,741,147.51. Telephones in service June 30, 1937, 84,706.

**Churches:** 186 of all denominations.

**Building Construction:** 1936, value of building permits \$6,341,279.

**Industry:** 715 manufacturing establishments producing goods valued at more than \$5,000 each annually. Leads the world in manufacture of photographic film, cameras, mail chutes, optical goods, check protectors, thermometers, office systems, enameled steel tanks and horticultural products. Ranks high in the production of clothing, buttons, shoes, machinery, telephone apparatus, radio, electrical supplies, railway signals and lithography.

**Trade:** Retail territory serves 700,000 people within a radius of fifty miles. Jobbing territory serves 2,000,000 people within a ninety mile radius. Live Chamber of Commerce with over 3,000 members.

**Hotels:** Nine modern with total of 2,650 rooms.

**Transportation:** Five railroads, the New York Central, Erie, Pennsylvania, Lehigh, Baltimore & Ohio; fifteen bus lines enter the city. Barge Canal Harbor and warehouses in centre of city. City owned Port of Rochester on Lake Ontario seven miles from centre of City, with regular day and night boat service to Canada and Thousand Islands; two daily ferries to Canada. City owned subway crosses entire city for freight service. Municipally owned and operated flying field covering 300 acres including two modern hangars.

**Amusements:** There are six theatres for stage productions, the largest seating 4,200 people; numerous motion picture houses, municipally owned Convention Hall, International League baseball, and the annual Exposition and Horse Show.

**Education:** There are forty-three elementary schools, eleven junior and senior high schools. Supplementing these are four special schools devoted to the instruction of backward pupils. Number of pupils in public schools exceeds 58,000 and there are 2,127 teachers. In addition, registrations in fifty-two parochial elementary schools and four senior high schools totals over 17,000. A civic orchestra of fifty pieces frequently gives concerts to develop among high school students an appreciation for music. Popular programs are given before the public for the same purpose on Sundays.

Advantages for higher education are offered through the University of Rochester, including the Eastman School of Music and the College of Medicine and Dentistry; Mechanics Institute, Colgate-Rochester Divinity School, Nazareth College, St. Andrews and St. Bernard's Seminary. There is also a School for the Deaf.

**Street Mileage:** 526 miles with 448 miles paved, 552 miles of sewers, 201 miles of electric street railway. Pure water from city owned lakes, thirty miles away, with capacity of 242,000,000 gallons, and an average daily pump of 30,000,000 gallons. There are approximately 550 miles of mains and an estimated plant value of over \$14,000,000.

**Fire Department:** Twenty-two engine companies, ten trucks, three hose, one water tower, one protective and two supply companies. All modern motorized equipment. Employed over 500 uniformed men in 1935.

The Rochester Chamber of Commerce will furnish any additional information on request.

# POPULATION OF NEW YORK

UNITED STATES CENSUS OF 1930

[illegible]

Number of Cities, designated by an (\*) asterisk, 60; Number of Counties, 62

[illegible]

## POPULATION OF NEW YORK

<b>Duchess</b>		<b>Bombay</b> .....	1,216	<b>Herkimer</b>		<b>Nunda</b> .....	2,100
Amenia.....	1,969	Brandon.....	516	Columbia.....	915	Ossian.....	510
*Beacon.....	11,933	Brighton.....	993	Danube.....	700	Portage.....	793
Beekman.....	764	Burke.....	1,512	Fairfield.....	1,248	Sparta.....	974
Clinton.....	1,041	Chateaugay.....	2,687	Frankfort.....	6,918	Springwater.....	1,381
Dover.....	3,775	Constable.....	1,016	German Flats.....	13,923	West Sparta.....	667
East Fishkill.....	1,845	Dickinson.....	1,061	Herkimer.....	12,327	York.....	2,349
Fishkill.....	2,890	Duane.....	177	Litchfield.....	712		37,560
Hyde Park.....	3,388	Port Covington.....	1,728	*Little Falls.....	11,105		
LaGrange.....	1,210	Franklin.....	1,242	Little Falls.....	741		
Milan.....	622	Hartletstown.....	6,856	Manheim.....	3,831	<b>Madison</b>	
Northeast.....	2,119	Malone.....	11,788	Newport.....	1,768	Brookfield.....	1,750
Pawling.....	2,391	Moira.....	2,101	Norway.....	482	Cazenovia.....	3,504
Pine Plains.....	1,299	Santa Clara.....	528	Ohio.....	457	DeRuyter.....	1,047
Pleasant Valley.....	1,520	Waverly.....	1,337	Russia.....	1,347	Eaton.....	2,168
*Poughkeepsie.....	40,288	Westville.....	880	Salisbury.....	1,244	Fenner.....	795
Poughkeepsie.....	12,707	StRegis Indian		Schuyler.....	1,146	Georgetown.....	684
Rel Hook.....	3,404	Reservation.....	945	Stark.....	844	Hamilton.....	3,687
Rhinebeck.....	2,968		45,694	Warren.....	974	Lebanon.....	895
Stanford.....	1,269			Webb.....	1,785	Lenox.....	5,887
Union Vale.....	1,025			Winfield.....	1,449	Lincoln.....	869
Wappinger.....	4,083				64,006	Madison.....	1,515
Washington.....	3,042					Nelson.....	1,026
	105,462	<b>Fulton</b>		<b>Jefferson</b>		*Ononda.....	10,558
		Bleecker.....	202	Adams.....	3,284	Smithfield.....	653
		Broadalbin.....	2,226	Alexandria.....	3,953	Stockbridge.....	1,369
		Caroga.....	306	Antwerp.....	2,292	Sullivan.....	3,383
		Ephratah.....	949	Brownville.....	3,489		39,790
		*Gloversville.....	23,099	Cape Vincent.....	1,958	<b>Monroe</b>	
		*Johnstown.....	10,801	Champion.....	3,001	Brighton.....	9,065
		Johnstown.....	2,612	Clayton.....	3,698	Chili.....	2,493
		Marfield.....	2,077	Ellisburg.....	3,026	Clarkson.....	1,456
		Northampton.....	1,919	Henderson.....	1,165	Gates.....	3,634
		Oppenheim.....	1,147	Hounsfield.....	2,926	Greene.....	12,113
		Perth.....	838	Lefay.....	2,422	Hamlin.....	2,079
		Stratford.....	384	Lorraine.....	848	Henrietta.....	2,142
			46,560	Lyme.....	1,585	Irondequoit.....	18,024
		<b>Genesee</b>		Orleans.....	1,790	Mendon.....	2,636
		Alabama.....	1,734	Pamella.....	979	Ogden.....	3,159
		Alexander.....	1,378	Philadelphia.....	1,562	Parma.....	3,222
		*Batavia.....	17,375	Rodman.....	935	Penfield.....	3,306
		Batavia.....	2,248	Rutland.....	1,734	Perinton.....	9,854
		Bergen.....	1,512	Theresa.....	1,715	Pittsford.....	7,192
		Bethany.....	1,254	*Watertown.....	32,205	Saga.....	1,718
		Byron.....	1,347	Watertown.....	1,270	*Rochester.....	325,132
		Darien.....	1,740	Worth.....	7,322	Rush.....	1,901
		Elba.....	1,695		415	Sweden.....	4,613
		LeRoy.....	6,007		83,574	Webster.....	4,778
		Oakfield.....	3,115	<b>Kings</b>		Wheatland.....	2,364
		Pavilion.....	1,236	Brooklyn bor-			423,881
		Pembroke.....	2,209	ough (part of		<b>Montgomery</b>	
		Stafford.....	1,231	New York city)		*Amsterdam.....	34,817
		Tonawanda In-			2,560,401	Amsterdam.....	3,818
		dian Reserva-				Canajoharie.....	4,023
		tion (part of)....	387	<b>Lewis</b>		Charleston.....	594
			44,468	Croghan.....	2,392	Florida.....	1,805
		<b>Greene</b>		Denmark.....	1,987	Glen.....	1,749
		Ashland.....	482	Diana.....	2,080	Minden.....	4,232
		Athens.....	2,254	Graig.....	821	Mohawk.....	2,730
		Cairo.....	1,772	Harrisburg.....	559	Palatine.....	2,287
		Catskill.....	8,200	High Market.....	222	Root.....	1,021
		Coxsackie.....	3,139	Lewis.....	677	StJohnsville.....	3,000
		Durham.....	1,104	Leyden.....	1,482		60,076
		Greenville.....	1,276	Lowville.....	4,336	<b>Nassau</b>	
		Halcott.....	223	Lyonsdale.....	762	*Glen Cove.....	11,430
		Hunter.....	2,299	Martinsburg.....	1,860	Hempstead.....	186,735
		Jewett.....	835	Montague.....	366	*Long Beach.....	5,817
		Lexington.....	815	New Bremen.....	1,597	North Hempstead.....	62,202
		New Baltimore.....	1,434	Osceola.....	319	Oyster Bay.....	36,589
		Prattsville.....	706	Pinckney.....	646		303,053
		Windham.....	1,269	Turin.....	897	<b>New York</b>	
			25,808	Watson.....	528	Manhattan bor-	
				West Turin.....	1,886	ough (part of	
					23,447	New York city)	
		<b>Hamilton</b>		<b>Livingston</b>			1,867,312
		Arietta.....	165	Avon.....	3,566	<b>*New York City</b>	
		Benson.....	69	Caledonia.....	2,305	Bronx.....	1,265,258
		Hope.....	134	Oonesus.....	832	Brooklyn.....	2,560,401
		Indian Lake.....	1,120	Genesee.....	3,135	Manhattan.....	1,867,312
		Inlet.....	261	Groveland.....	3,295	Queens.....	1,076,129
		Lake Pleasant.....	540	Leicester.....	1,565	Richmond.....	158,346
		Long Lake.....	1,038	Lima.....	1,900		6,930,446
		Morehouse.....	85	Livonia.....	2,644		
		Wells.....	527	Mount Morris.....	4,234		
			3,929	North Dansville.....	5,310		
<b>Franklin</b>							
Altamont.....	6,097						
Bangor.....	1,701						
Belmont.....	1,303						
<b>Essex</b>							
Chesterfield.....	1,599						
Crown Point.....	1,468						
Elizabethtown.....	1,113						
Essex.....	1,116						
Jay.....	2,153						
Keene.....	1,061						
Lewis.....	667						
*Minerva.....	567						
Moriah.....	6,191						
Newcomb.....	437						
North Elba.....	6,472						
North Hudson.....	235						
StArmand.....	1,190						
Schroon.....	932						
Ticonderoga.....	5,105						
Westport.....	1,534						
Willsboro.....	1,612						
Wilmington.....	567						
	33,959						

# POPULATION OF NEW YORK

13

<b>Niagara</b>		<b>Manchester</b> .....	5,882	<b>Middlefield</b> .....	1,504	<b>Massena</b> .....	12,029
<b>Cambria</b> .....	1,786	<b>Naples</b> .....	1,833	<b>Milford</b> .....	1,635	<b>Morristown</b> .....	1,658
<b>Hartland</b> .....	2,500	<b>Phelps</b> .....	4,580	<b>Morris</b> .....	1,335	<b>Norfolk</b> .....	3,047
<b>Lewiston</b> .....	3,420	<b>Richmond</b> .....	883	<b>New Lisbon</b> .....	781	<b>*Ogdensburg</b> .....	16,915
<b>*Lockport</b> .....	23,160	<b>Seneca</b> .....	2,635	<b>*Oneonta</b> .....	12,536	<b>Oswegatchie</b> .....	2,269
<b>Lockport</b> .....	2,720	<b>South Bristol</b> .....	654	<b>Oneonta</b> .....	2,314	<b>Parishville</b> .....	1,284
<b>Newfane</b> .....	4,225	<b>Victor</b> .....	2,424	<b>Otego</b> .....	1,373	<b>Pierceland</b> .....	1,330
<b>Niagara</b> .....	865	<b>West Bloomfield</b> .....	1,040	<b>Otsego</b> .....	4,345	<b>Pierrepont</b> .....	1,379
<b>*Niagara Falls</b> .....	75,460			<b>Pittsfield</b> .....	727	<b>Pitcairn</b> .....	576
<b>*N. Tonawanda</b> .....	19,019		54,276	<b>Plainfield</b> .....	707	<b>Potsdam</b> .....	8,880
<b>Pendleton</b> .....	1,253	<b>Orange</b>		<b>Richfield</b> .....	2,099	<b>Rosie</b> .....	720
<b>Porter</b> .....	2,954	<b>Blooming Grove</b> .....	1,922	<b>Roseboom</b> .....	633	<b>Russell</b> .....	1,585
<b>Royalton</b> .....	4,660	<b>Chester</b> .....	2,164	<b>Springfield</b> .....	1,305	<b>Stockholm</b> .....	2,253
<b>Somerset</b> .....	1,892	<b>Cornwall</b> .....	5,067	<b>Unadilla</b> .....	2,276	<b>Waddington</b> .....	1,709
<b>Wheatfield</b> .....	2,212	<b>*Newburgh</b> .....	1,800	<b>Westford</b> .....	652		
<b>Wilson</b> .....	2,801	<b>Deerpark</b> .....	1,779	<b>Worcester</b> .....	1,946		90,960
<b>Tuscarora Indian Reservation</b> .....	402	<b>Goshen</b> .....	5,182				
		<b>Greenville</b> .....	674			<b>Saratoga</b>	
	149,329	<b>Hamptonburg</b> .....	1,130			<b>Ballston</b> .....	2,578
<b>Oneida</b>		<b>Highlands</b> .....	7,057	<b>Putnam</b>		<b>Charlton</b> .....	978
<b>Annsville</b> .....	1,242	<b>*Middletown</b> .....	21,276	<b>Carmel</b> .....	3,434	<b>Clifton Park</b> .....	2,222
<b>Augusta</b> .....	1,739	<b>Minisink</b> .....	1,360	<b>Kent</b> .....	770	<b>Corinth</b> .....	3,760
<b>Ava</b> .....	588	<b>Monroe</b> .....	3,000	<b>Patterson</b> .....	1,196	<b>Day</b> .....	328
<b>Boonville</b> .....	3,320	<b>Montgomery</b> .....	8,082	<b>Phillipstown</b> .....	3,982	<b>Edinburg</b> .....	512
<b>Bridgewater</b> .....	730	<b>Mount Hope</b> .....	1,847	<b>Putnam Valley</b> .....	859	<b>Galway</b> .....	1,137
<b>Camden</b> .....	2,977	<b>Newburgh</b> .....	31,275	<b>Southeast</b> .....	3,503	<b>Greenfield</b> .....	1,544
<b>Deerfield</b> .....	983	<b>New Windsor</b> .....	3,126			<b>Hadley</b> .....	841
<b>Florence</b> .....	641	<b>*Port Jervis</b> .....	10,243		13,744	<b>Halfmoon</b> .....	1,739
<b>Floyd</b> .....	752	<b>Tuxedo</b> .....	2,606	<b>Queens</b>		<b>Malta</b> .....	7,924
<b>Forestport</b> .....	796	<b>Wallkill</b> .....	3,835	<b>Queens borough (part of New York city)</b> .....	1,079,129	<b>*Mechanicville</b> .....	5,672
<b>Kirkland</b> .....	5,059	<b>Warwick</b> .....	8,017			<b>Milton</b> .....	4,471
<b>Lee</b> .....	1,300	<b>Wayanda</b> .....	1,046			<b>Moreau</b> .....	1,059
<b>Marcy</b> .....	2,604	<b>Woodbury</b> .....	1,923			<b>Northumberland</b> .....	470
<b>Marshall</b> .....	1,431		130,383	<b>Rensselaer</b>		<b>Providence</b> .....	3,027
<b>New Hartford</b> .....	7,121			<b>Berlin</b> .....	1,359	<b>Saratoga Springs</b> .....	13,169
<b>Paris</b> .....	2,994	<b>Orleans</b>		<b>Brunswick</b> .....	3,949	<b>Stillwater</b> .....	3,042
<b>Remsen</b> .....	867	<b>Albion</b> .....	5,994	<b>East Greenbush</b> .....	3,267	<b>Waterford</b> .....	5,687
<b>*Rome</b> .....	32,338	<b>Barre</b> .....	1,886	<b>Grafton</b> .....	633	<b>Wilton</b> .....	997
<b>Sangerfield</b> .....	1,862	<b>Carlton</b> .....	1,689	<b>Hoosick</b> .....	7,026		63,314
<b>Steuben</b> .....	690	<b>Clarendon</b> .....	1,224	<b>Nassau</b> .....	2,020	<b>Schenectady</b>	
<b>Trenton</b> .....	2,262	<b>Gaines</b> .....	1,702	<b>North Greenbush</b> .....	2,215	<b>Duanesburg</b> .....	1,937
<b>*Utica</b> .....	101,740	<b>Kendall</b> .....	1,311	<b>Petersburg</b> .....	976	<b>Glennville</b> .....	12,069
<b>Vernon</b> .....	4,854	<b>Murray</b> .....	3,251	<b>Pittsford</b> .....	2,426	<b>Niskayuna</b> .....	4,931
<b>Verona</b> .....	3,192	<b>Ridgeway</b> .....	6,068	<b>Poestenkill</b> .....	1,164	<b>Princeton</b> .....	472
<b>Vienna</b> .....	1,554	<b>Shelby</b> .....	3,946	<b>*Rensselaer</b> .....	11,223	<b>Rotterdam</b> .....	9,920
<b>Western</b> .....	1,139	<b>Yates</b> .....	1,914	<b>Sandlake</b> .....	2,022	<b>*Schenectady</b> .....	95,692
<b>Westmoreland</b> .....	2,170		28,795	<b>Schaghticoke</b> .....	3,006		125,021
<b>Whitestown</b> .....	11,818			<b>Schodack</b> .....	4,639		
	198,763			<b>Stephentown</b> .....	1,093		
<b>Onondaga</b>		<b>Oswego</b>		<b>*Troy</b> .....	72,763		
<b>Camillus</b> .....	4,066	<b>Albion</b> .....	1,175		119,781	<b>Schoharie</b>	
<b>Cicero</b> .....	3,684	<b>Amboy</b> .....	507			<b>Blenheim</b> .....	397
<b>Clay</b> .....	3,560	<b>Boylston</b> .....	444	<b>Richmond</b>		<b>Broome</b> .....	660
<b>DeWitt</b> .....	9,536	<b>Constantia</b> .....	1,405	<b>Richmond borough (part of New York city)</b> .....	168,346	<b>Carlisle</b> .....	798
<b>Elbridge</b> .....	2,814	<b>*Fulton</b> .....	12,462			<b>Coleskill</b> .....	3,980
<b>Fahls</b> .....	1,252	<b>Granby</b> .....	2,130			<b>Cornwall</b> .....	569
<b>Geddes</b> .....	10,210	<b>Hannibal</b> .....	1,855	<b>Rockland</b>		<b>Esperance</b> .....	881
<b>Lafayette</b> .....	1,438	<b>Hastings</b> .....	2,149	<b>Clarkstown</b> .....	10,188	<b>Fulton</b> .....	1,010
<b>Lysander</b> .....	4,849	<b>Mexico</b> .....	2,720	<b>Haverstraw</b> .....	11,603	<b>Glilboa</b> .....	978
<b>Manlius</b> .....	7,620	<b>Minetto</b> .....	856	<b>Orangetown</b> .....	18,029	<b>Jefferson</b> .....	916
<b>Marcellus</b> .....	2,993	<b>New Haven</b> .....	1,116	<b>Ramapo</b> .....	16,321	<b>Middleburg</b> .....	1,927
<b>Onondaga</b> .....	5,826	<b>Orwell</b> .....	826	<b>Stony Point</b> .....	3,458	<b>Richmondville</b> .....	1,463
<b>Otisco</b> .....	871	<b>*Oswego</b> .....	22,652			<b>Schoharie</b> .....	2,193
<b>Pompey</b> .....	1,996	<b>Oswego</b> .....	1,830		59,599	<b>Seward</b> .....	1,128
<b>Salina</b> .....	1,117	<b>Palermo</b> .....	1,012			<b>Sharon</b> .....	1,319
<b>Skaneateles</b> .....	4,795	<b>Perth</b> .....	1,249			<b>Summit</b> .....	705
<b>Spafford</b> .....	767	<b>Redfield</b> .....	583			<b>Wright</b> .....	755
<b>*Syracuse</b> .....	209,326	<b>Richland</b> .....	3,816	<b>St. Lawrence</b>			19,667
<b>Tully</b> .....	1,461	<b>Sandy Creek</b> .....	2,156	<b>Brasher</b> .....	1,706	<b>Schuyler</b>	
<b>VanBuren</b> .....	3,814	<b>Schoeppe</b> .....	3,010	<b>Canton</b> .....	6,795	<b>Catharine</b> .....	1,177
<b>Onondaga Indian Reservation</b> .....	611	<b>Scriba</b> .....	1,973	<b>Clare</b> .....	227	<b>Cayuta</b> .....	258
	291,606	<b>Volney</b> .....	2,347	<b>Clifton</b> .....	1,291	<b>Dix</b> .....	3,583
<b>Ontario</b>		<b>West Monroe</b> .....	666	<b>Colton</b> .....	986	<b>Hector</b> .....	2,904
<b>Bristol</b> .....	743	<b>Williamstown</b> .....	706	<b>DeKalb</b> .....	2,346	<b>Montour</b> .....	1,868
<b>Canadice</b> .....	917		69,645	<b>DePeyster</b> .....	805	<b>Orange</b> .....	812
<b>*Canandaigua</b> .....	7,541	<b>Otsego</b>		<b>Edwards</b> .....	1,399	<b>Reading</b> .....	1,257
<b>Canandaigua</b> .....	1,338	<b>Burlington</b> .....	913	<b>Fine</b> .....	1,053	<b>Tyrene</b> .....	1,050
<b>East Bloomfield</b> .....	1,631	<b>Butternut</b> .....	1,261	<b>Fowler</b> .....	1,608		
<b>Farmington</b> .....	1,477	<b>Cherry Valley</b> .....	1,326	<b>Gouverneur</b> .....	5,512		12,909
<b>*Geneva</b> .....	16,053	<b>Decatur</b> .....	336	<b>Hammond</b> .....	1,338	<b>Seneca</b>	
<b>Geneva</b> .....	1,327	<b>Dedart</b> .....	1,556	<b>Herkon</b> .....	1,356	<b>Covart</b> .....	1,578
<b>Gorham</b> .....	1,843	<b>Exeter</b> .....	691	<b>Hopkinton</b> .....	1,526	<b>Fayette</b> .....	2,396
<b>Hopewell</b> .....	1,365	<b>Hartwick</b> .....	1,487	<b>Lawrence</b> .....	1,046	<b>Junius</b> .....	776
		<b>Laurham</b> .....	1,423	<b>Lisbon</b> .....	2,642	<b>Lodi</b> .....	1,044
		<b>Maryland</b> .....	1,530	<b>Louisville</b> .....	1,355	<b>Ovid</b> .....	2,842
				<b>Macomb</b> .....	953		
				<b>Madrid</b> .....	1,388		



## POPULATION OF NEW YORK

Romulus.....	2,856	<b>Sullivan</b>	Shandaken.....	2,066	<b>Westchester</b>	
Seneca Falls.....	7,166	Bethel.....	Shawangunk.....	2,127	Bedford.....	8,653
Tyre.....	743	Callicoon.....	Ulster.....	3,597	Cortlandt.....	28,492
Varick.....	1,013	Cochecton.....	Wawarsing.....	7,437	Eastchester.....	20,340
Watertown.....	4,569	Delaware.....	Woodstock.....	1,652	Greenburgh.....	35,821
	24,983	Fallsburgh.....		80,155	Harrison.....	10,195
<b>Steuben</b>		Forestburg.....	<b>Warren</b>		Lewisboro.....	1,427
Addison.....	1,975	Fremont.....	Bolton.....	1,308	Mamaroneck.....	19,040
Avoca.....	1,788	Highland.....	Caldwell.....	1,730	Mount Pleasant.....	20,944
Bath.....	7,843	Liberty.....	Chester.....	1,610	*Mount Vernon.....	61,499
Bradford.....	507	Lumberland.....	*Glens Falls.....	18,551	Newcastle.....	6,792
Cameron.....	704	Mamakating.....	Hague.....	741	*New Rochelle.....	54,000
Campbell.....	1,263	Neversink.....	Horicon.....	800	North Castle.....	2,540
Canisteo.....	3,391	Rockland.....	Johnsburg.....	1,887	North Salem.....	1,128
Caton.....	915	Thompson.....	Luzerne.....	1,150	Ossining.....	17,724
Cohocton.....	2,516	Tusten.....	Queensbury.....	3,169	Pelham.....	11,851
*Corning.....	15,777		Stony Creek.....	464	Poundridge.....	602
Corning.....	2,997	<b>Tioga</b>	Thurman.....	521	Rye.....	37,495
Dansville.....	995	Barton.....	Warrensburg.....	2,263	Scarsdale.....	9,690
Erwin.....	3,518	Berkshire.....		34,174	Somers.....	1,514
Fremont.....	697	Candor.....	<b>Washington</b>		*White Plains.....	35,830
Greenwood.....	968	Newark Valley.....	Argyle.....	1,452	*Yonkers.....	134,646
Hartsville.....	470	Nichols.....	Cambridge.....	1,677	Yorktown.....	2,724
Hornby.....	683	Owego.....	Dresden.....	470		520,947
*Hornell.....	16,250	Richford.....	Easton.....	1,726	<b>Wyoming</b>	
Hornellsville.....	2,505	Spencer.....	Fort Ann.....	2,977	Arcade.....	2,404
Howard.....	1,032	Tioga.....	Fort Edward.....	5,841	Attica.....	2,891
Jasper.....	986		Granville.....	5,806	Bennington.....	1,515
Lindley.....	945		Greenwich.....	3,872	Castile.....	1,996
Prattsburg.....	1,421	<b>Tompkins</b>	Hampton.....	673	Covington.....	696
Fultoney.....	983	Caroline.....	Hartford.....	1,102	Eagle.....	960
Rathbone.....	695	Danby.....	Hebron.....	1,191	Gainesville.....	2,074
Thurston.....	646	Dryden.....	Jackson.....	822	Genesee Falls.....	509
Troupsburg.....	1,124	Enfield.....	Kingsbury.....	8,094	Java.....	1,403
Tuscarora.....	839	Groton.....	Putnam.....	479	Middlebury.....	1,091
Urbana.....	2,108	Ithaca.....	Salem.....	2,145	Orangeville.....	679
Wayland.....	3,071	Lansing.....	White Creek.....	2,180	Perry.....	5,086
Wayne.....	516	Newfield.....	Whitehall.....	5,975	Pike.....	913
West Union.....	715	Ulysses.....		46,482	Sheldon.....	1,545
Wheeler.....	677		<b>Wayne</b>		Warsaw.....	4,361
Woodhull.....	1,151		Arcadia.....	10,051	Wethersfield.....	641
	82,671	<b>Ulster</b>	Butler.....	1,384		28,764
<b>Suffolk</b>		Denning.....	Galen.....	3,901	<b>Yates</b>	
Babylon.....	19,291	Esopus.....	Huron.....	1,313	Barrington.....	790
Brookhaven.....	28,291	Gardner.....	Lyons.....	5,072	Benton.....	1,845
Easthampton.....	6,569	Hardenbergh.....	Macedon.....	2,330	Italy.....	510
Huntington.....	25,532	Hurley.....	Marion.....	2,172	Jerusalem.....	2,072
Islip.....	33,194	*Kingston.....	Ontario.....	2,713	Middlesex.....	839
Riverhead.....	7,956	Kingston.....	Palmyra.....	4,223	Milo.....	6,561
Shelter Island.....	1,113	Lloyd.....	Rose.....	1,921	Potter.....	1,190
Smithtown.....	11,855	Marbletown.....	Savannah.....	1,485	Starkey.....	2,237
Southampton.....	15,341	Marlborough.....	Sodus.....	5,003	Torrey.....	504
Southold.....	11,669	New Paltz.....	Sodut.....	2,047		
Shinnecock and Poospatuck Indian Reservation.....	194	Olive.....	Walworth.....	3,504		
	161,055	Plattekill.....	Williamson.....	2,876		
		Rosendale.....	Wolcott.....	49,995		
		Saugerties.....				

## POPULATION OF NEW YORK, 1790 TO 1930

CENSUS YEAR	Population	INCREASE OVER PRE- CEDING CENSUS	
		Number	Per cent
1830.....	12,588,066	2,202,839	21.2
1820.....	10,385,227	1,271,613	14.0
1910.....	9,113,614	1,844,720	25.4
1900.....	7,268,894	1,265,720	21.1
1880.....	6,003,174	920,303	18.1
1860.....	5,082,871	700,112	16.0
1870.....	4,382,759	502,024	12.9
1860.....	3,880,735	783,341	25.3
1850.....	3,097,394	668,473	27.5
1840.....	2,428,921	510,313	26.6
1830.....	1,918,608	645,798	39.8
1820.....	1,372,812	413,763	43.1
1810.....	959,049	369,998	62.8
1800.....	589,051	248,931	73.2
1790.....	340,120		

## MONROE COUNTY

*Incorporated in 1821—Includes 682 square miles.*

### BOARD OF SUPERVISORS

Salary \$1,200. Elected biennially. Annual session begins on second day of January. Regular meetings first and second day of each month at the Supervisors' Rooms, Court House.

#### Rochester

Terms of all expire December 31, 1937

- Ward 1—Arthur Lochte (R)  
 " 2—Jos G Falconi (D)  
 " 3—Chas A Mahony (D)  
 " 4—Harry Schoenfelder (D)  
 " 5—Frank A Loewenguth (D)  
 " 6—Thos F Trott (D)  
 " 7—Edwd DiPrima (D)  
 " 8—Jacob Komenski (D)  
 " 9—Michl L Rogers (R)  
 " 10—Joseph Kaufman (R)  
 " 11—John J Callahan (D)  
 " 12—Carl R Bausch (R)  
 " 13—Timothy J Kelly (R)  
 " 14—Irving G Drew (R)  
 " 15—John J Kennedy (R)  
 " 16—Patsy Laudisi (R)  
 " 17—Harry Lill (D)  
 " 18—Harry H Frank (R)  
 " 19—Wm T Nolan (R)  
 " 20—John F Allen (D)  
 " 21—A Gould Hatch (R)  
 " 22—Chas J Knapp (D)  
 " 23—John F Lawson (R)  
 " 24—Geo V Saile (R)

#### Towns

Terms of all expire December 31, 1937

- Brighton—Saml A Cooper (R)  
 Chili—Gage M Miller (R)  
 Clarkson—Geo E Edmunds (R)  
 Gates—Fred C Sours (R)  
 Greece—Gordon A Howe (R)  
 Hamlin—Fred Leverenz (R)  
 Henrietta—Homer E Benedict (R)  
 Irondequoit—Thos E Broderick (R)  
 Mendon—Alfred H Lord (R)  
 Ogden—Jos E Morgan (D)  
 Parma—Evan H Tompkins (D)  
 Penfield—Henry U Rothfus (R)  
 Perinton—Raymond J Lee (R)  
 Pittsford—Chas H Westerman (R)  
 Riga—Walter S Robertson (R)  
 Rush—James L Wiles (R)  
 Sweden—Wm F Udell (R)  
 Webster—G Robt Witmer (R)  
 Wheatland—Geo E Boylen (R)

Clerk Board of Supervisors—Harold S W MacFarlin. Deputy Clerk—Michl Pasterelle jr. Counter Clerk—Hugh H Hamill. Clerk and Messenger—Richd Dean, appointed annually by the supervisors

Commissioners of Public Buildings—John J Kennedy, Arthur Lochte, John F Lawson, Harry Frank, meet at Court House, Wednesdays; appointed annually by the Supervisors

County Mgr—Clarence A Smith, salary \$10,000, appointed by the supervisors for a term of four years, expires Dec 31, 1939. Arthur H Crapsey, sec

Superintendent of Schools—1st Dist, Wallace W Rayfield, Webster; 2d Dist, Lester B Foreman, Pittsford; 3d Dist, Fred W Hill 4th Dist, John Malloch, Churchville

County Sealer of Weights and Measures—Fred J Young, 1400 South av; appointed annually by the Supervisors.

Librarian Appellate Division (Law Library)—Fred E Rosbrook; appointed by the Justices of Appellate Division, Fourth Dept. Assistants—Mrs Lois Dean, Mrs Edna L Block.

County Superintendent of Highways—Geo C Wright, 19 Main W, rm 810, appointed by the Supervisors.

Purchasing Agent—W Raymond Whitley, salary \$3,600, appointed by the County Mgr.

Deputy Purchasing Agent—Adelaide R Heberling. Clerks—Mildred Hill, Abigail J Rice, appointed by Purchasing Agent. Sten-Clk, May Feldman

Superintendent Court House—Michl Ryan

Chief Engineer—Arthur Fertig

Night Watchman, Court House, Leon Turlynek

County Bacteriologist—Geo W O'Grady, appointed annually by the Supervisors. Office Assistant—M E Seifert. Hematologist—Mary C Loos. Laboratory Assistants—Mrs G A Metcalf, Mary C Loos. Bacteriologist—Edith P Bradshaw

### COUNTY CLERK'S OFFICE

Office, Court House, Rochester

Office Hours, 9 A M to 5 P M

County Clerk—Roy F Bush, elected by the people; term three years; expires December 31, 1936

Deputy Clerk—Robert E Burke

First Assistant—Glenn W Gazley

### FINANCIAL DEPARTMENT

Office, Court House, Rochester

Office Hours, 9 A M to 5 P M

Director of Finance, Clarence A Smith, appointed by the Supervisors

Deputy Treasurer—Arthur H Jameson, appointed by Dir of Finance

### LAW DEPARTMENT

Office, Court House, Rochester

District Attorney—Danl J O'Mara of Rochester, fixed by Supervisors; elected by the people; term three years; expires December 31, 1937

Asst District Attorneys—Anthony Miceli, Clarence J Henry, Stephen K Pollard, Thos P Culhane, Harry L Rosenthal, appointed by District Attorney

### LEGAL DEPARTMENT

16 Main W, rm 400, Rochester

Legal Adviser—Harry Rosenberg, appointed by Supervisors; term expires Dec 31, 1937

Stenographer—Mae J Brady

Law Clerks—John G Doyle, Henry S McGonegal

### COMMISSIONER OF JURORS

Commissioner of Jurors—Richard L Saunders, appointed by the resident Judges of the Supreme Court and Judge of Monroe County Court; term five years; expires 1938

Clerk—Mrs C Lillian Rich  
 Stenographer—Mrs Margt J Feenstra  
 Asst Examiner—Jos P Lambert  
 All subordinates are appointed by the Commissioner of Jurors, and approved by the Justices of the Supreme Court and Judge of County Court.

### BOARD OF ELECTIONS

Office, Court House, Rochester

Hours, 9 A M to 5 P M

Commissioners of Elections—Robert W Smith, Patk A Grimes; terms expire Dec 31, 1940, appointed by the Board of Supervisors  
 Stenographer—Mrs Evelyn B Nichols

### SHERIFF AND DEPUTIES

Office, Court House, Rochester

Sheriff—James S Malley, elected by the people; term three years; expires December 31, 1937

Under Sheriff—M Bruce Potter, appointed by the Sheriff

Chief Deputy Sheriff—Geo A Conway  
 Asst Chief Deputy Sheriff—J Mitchell Kaplan

Attorney—Donald Harris  
 Cashier—Julia Fisher  
 Deputy Sheriffs—Danl W Dawson, Carlton F Reule, Clifford J McCombs, Myles J Dorsey jr, J Earl Sharpe, Bernard Blanchard, Robt E Malley, Geo A Schlaffer, Michl J Houlihan, John E Lyons, Stanley Felerski, Chas Scoll- ick, Frank S Costich, Jos C Fisher, Henry A Kaul jr, Harland D Spiegel, Wm Stauber, Earl Webster, Oren J Tuttle, Frank E Schwind, Edmund J Williams, Cassius L Schoonover, Jos Friedman, Robt Ferrari, Herman J Krenzer, Hiram C Johnson, Wm J Maloney, Geo W Donnelly  
 Secretary to Sheriff—Irene Riess

### JAIL

Jailors—Stanley Edick, Geo Varney, Arthur Timmons. Asst Jailor—Stephen Figlerowicz.  
 Women Jailors—Helen Rowland, Judith Nourse, appointed by the Sheriff

Physician—Jas Davis, appointed by the Supervisors

Chaplains—Protestant, Dominic Porfario; Catholic, Laurence Casey; Jewish, Solomon Sadowsky, appointed by the Supervisors

Deputy Sheriffs—Clarence Bates, Ray B Tuttle, Chas Kuntz, Theo Copenhagen, Herman Genrich, Arthur J Englert, Wm Voke, appointed by the Sheriff

Matron—Anna Malley, appointed by the Sheriff

Engineers—Alex Milne, Patk J Kane

### DEPARTMENT OF SANITATION

435 E Henrietta rd

Chief—Emmett R Gauhn, appointed annually by Supervisors

Stenographers—Genevieve L Pritchard, Marjorie C Grundke

Two Inspectors—Chas L Binder and Lyle E Wells

County Veterinarian—Frank G Tegg

### COMMISSIONERS FOR BURIAL OF DECEASED SOLDIERS

West Side—Henry J Ryan

East Side—Theo S Pulver

At Large—Chas H Rellingar, Chas Brewer, 34 Court rm 319, Rochester

### CORONERS

Office, Public Morgue, 70 Clarissa, Rochester  
 Richd A Leonardo, David H Atwater, elected by the people for a term of three years; Attendants—Patk J Brennan, Geo M Glasser, Chas J Welch

Chauffeurs—Raymond Fredrick, William Brodie, Lorin T Hinton

Laborers—Philip Eisenhauer, Martin Sullivan, Alfredo Maurizio

### Coroners Physicians

City—Walter J Riley, for East side; Floyd Winslow, for West side, Rochester

Towns—Geo S Price, for East side, Fairport; John L Hazen, for West side, Brockport

### MONROE COUNTY BOARD OF CHILD WELFARE

Office, 1400 South av, Rochester

Members of the Board—Harry B Crowley, chairman. Mrs Louis A Langie, cor sec; H Douglass Vanduser, Mrs John L Hazen. Secretary—Mrs Eva H Shepard. Assistant Secretary—M Vera Wilbur. Domestic Educators—Christine M Galvin, Helen McAmmond. Case Workers—Mrs Jean H Ovenburg, Mrs Katherine Russell

### MONROE COUNTY DEPARTMENT OF PUBLIC WELFARE

140 Plymouth Av S, Rochester

County Director of Public Welfare—Jesse B Hannan, appointed by the County Manager.

Deputy Director—Agnes T George  
 Confidential Secretary—Dana M Porter

Investigators—Mrs Marie B Taylor supvr, Frances R Trimby, Irene L Michel. Record Clerk—Audry H Hicks. Clerk—Sten—Eleanor F Collins. Sten—Corinne D Rogers. Open daily 9 A M to 4:30 P M

Physicians—Robt J Campbell, Wm J Gibson, Chas T Lunsford, Anthony Bondi, Eliz H Merle, appointed by the Director

Division of Old Age Assistance—Wm J Powers, Supervisor

COUNTY HOME—435 E Henrietta rd, Rochester

Warden—Geo H Maitland, appointed by the Director

Chaplains—Gregory D Dugan, Wm S McCoy, appointed by the Supervisors

Chief Clerk—Ben Lipschutz

Assistants—Appointed by the Director.

Matron—Lucille P Hannan

### COUNTY INFIRMARY

435 E Henrietta rd, Rochester

Resident Medical Supervisor—Eric S Green. Asst Physician, Fred D Andrew. Resident Physicians—Marco R Bonsignore, Andrew W Guthrie, James D Hague, Barney S Pugsli, Richd H Sloan. Supt of Nurses—Mary E Anderson. Chief Clerk, Mildred B Schreiner. Appointments by the Director

### MONROE COUNTY PENITENTIARY

Superintendent—Romeyn S Dunn, term expires December 31, 1937; appointed by the Supervisors

Deputy Superintendent—Lawrence G Hoyer, appointed by the Superintendent

Bookkeeper—Jos C Powers

Assistants—Appointed by the Superintendent

## FOR YEAR ENDING NOVEMBER 1938

17

**MONROE COUNTY IOLA SANATORIUM**

East Henrietta and Westfall roads, Rochester

President—Max L Holtz  
 Vice-President—James L Hondorf, MD  
 Superintendent—Ezra R Bridge  
 Business Officer—Wallace H Bush  
 Resident Physicians—Perry A Bly, Robert H Marks, John M MacMillan, Abraham Ng, Elmer J Teggarden, Raymond H Wohlrab, Chas F Gay

Board of Managers—Max L Holtz, Jas L Hondorf, MD, Elbert W Brigham, Milton E Gibbs, Floyd S Winslow, MD

Established by the County of Monroe, October 1, 1910, for the care and treatment of tuberculosis—Post Office Address, RD No 2, Rochester, N Y

**COUNTY COURT**

Court House, Rochester

County Judges—Wm C Kohlmetz of Rochester, term expires 1940; Wm F Lynn of Rochester; term expires December 31, 1938. Elected by the people.

Special County Judge—Henry D Shedd, County Court Clerks—John R Reardon, Wm J Ward

Stenographers—Herbert J Erb, Howard G Nobles, appointed by County Judge.

Special Clerk, Children's Court—Victor E Brown

Clerk, Children's Court—Lou Magrain  
 Chief Probation Officer for Children—Harry O Argento. Asst Chief, Mrs Jeanne E Jacques, appointed by County Judge

Probation Officers—Leon C Whitlock and Edwd F Geen, Helen M O'Reilly and Millie J Bristol

Confidential Clerks to County Judge—Jane B Grimm, Martha M Miller

Clerk and Stenographer, Children's Court—Margt R McKissick  
 Stenographer and Record Clerk—Regina M Powers

**Monroe County Probation Office—Adult Division**

Chief Probation Officer—Abram N Jones  
 Asst Chief Probation Officer—Elmer T Lindquist

Probation Officers—Jos H McMahon, Geo J Gray, Chas B Tutty jr, John A Vaisey, Willard M Green

Clerk—Emilie A LePine. Appointed by County Judge

Stenographers—Esther S Whall, Mrs Audrey E Steinberg

**Terms of Court**

Third Monday of January; third Monday of March; third Monday of May; third Monday of September; third Monday of November, each with a trial jury; every Monday for contested motions and Ex-parte applications

**SURROGATE'S COURT**

Court House, Rochester

Surrogate—Jos M Feeley, term six years; expires Dec 31, 1937

Clerk of Court—Marietta E Allen. Deputy, Frank R O'Brien, appointed by the Surrogate  
 Clerks—Indexer, Ada E Campbell, Clara M Seiner, Mrs Mabel W Grey, Laura B Wehnert, Helen M Renaud, Ruth A Holden, Maude A DeWitt, Mrs Mary M Bieck

Transfer Tax Clerk—  
 Stenographer—Albert E Lazarus, appointed by the Surrogate

Sessions daily at 10 A M (except Wednesdays and Saturdays and the month of Aug)

**POPULATION OF ROCHESTER AND MONROE COUNTY**

State Census of 1885.

United States Census of 1920 and 1930

Wards	1920	1925	1930	Towns	1920	1925	1930
1.....	2,113	2,428	1,346	Brighton.....	2,911	4,584	9,003
2.....	3,321	2,924	2,163	Chili.....	1,780	2,085	2,483
3.....	7,900	7,622	7,775	Clarkson.....	1,403	1,501	1,456
4.....	6,065	4,825	4,151	Gates.....	1,419	2,289	3,870
5.....	10,376	9,948	8,871	Greece.....	3,350	6,805	12,075
6.....	8,396	8,138	7,109	Hamlin.....	1,999	2,251	2,035
7.....	8,281	6,868	5,861	Henrietta.....	1,910	2,127	1,924
8.....	16,787	16,161	14,561	Irondequoit.....	5,123	10,469	17,935
9.....	8,444	8,515	7,379	Mendon.....	2,509	2,736	2,338
10.....	28,404	31,669	34,040	Ogden.....	2,681	3,066	3,159
11.....	12,246	13,264	11,684	Parma.....	2,923	3,258	3,225
12.....	17,777	18,033	17,376	Penfield.....	2,087	3,259	3,207
13.....	5,851	5,677	5,061	Perinton.....	7,799	9,265	9,743
14.....	17,268	18,882	20,100	Pittsford.....	4,614	6,266	7,338
15.....	9,505	9,959	9,277	Riga.....	1,849	1,737	1,710
16.....	12,361	10,489	9,705	Rush.....	2,091	2,024	1,901
17.....	21,681	23,700	26,299	Sweden.....	3,984	4,578	4,608
18.....	29,635	33,613	35,310	Webster.....	3,976	4,572	4,675
19.....	29,402	36,007	39,522	Wheatland.....	2,076	2,516	2,361
20.....	11,468	11,846	11,672				
21.....	7,011	8,976	11,524	Rural total.....	56,284	75,388	94,936
22.....	12,024	16,578	20,030	Rochester.....	295,750	316,786	325,019
23.....	3,511	4,717	6,482				
24.....	4,924	6,047	7,546	County.....	352,034	392,174	419,955
Total.....	295,750	316,786	325,019				

# MISCELLANEOUS DEPARTMENT

## DOMESTIC POSTAGE RATES

### First Class

Letters etc.: 3 cents for each ounce or fraction of an ounce. Letters addressed for local delivery 2 cents each ounce or fraction of an ounce.

Post Cards: 1 cent each, within prescribed sizes.

Business Reply Cards: Ordinary, 2 cents each; air mail, 6 cents per ounce.

Business Reply Envelopes: Ordinary or air mail: 1 cent in addition to regular postage. Apply at P. O. for permit.

Collect-on-Delivery Service is applicable to domestic registered and unregistered sealed mail of any class bearing postage at the first-class rate. Bills or statements of indebtedness are not mailable C. O. D. Such articles as are mailable (deeds, abstracts of title, insurance policies, bills of lading representing freight shipments, valuable light-weight merchandise etc.) must be based on bona fide orders for the contents or in conformity with agreements between senders and addressees.

Shortpaid Matter: First-class matter mailed short-paid one rate (3 cents) shall be rated 3 cents due for collection upon delivery, and 4 cents due for each short-paid ounce or fraction of an ounce when shortpaid more than one rate.

### Second Class

Newspapers and Periodicals (Transient rate): 1 cent for each 2 ounces or fraction of 2 ounces or fourth-class rate whichever is lower.

### Third Class

Miscellaneous: 1½ cents for each 2 ounces or fraction of 2 ounces, up to and including 8 ounces. Books and Catalogs, 24 printed pages or more (including covers), Seeds, etc., 1 cent for each 2 ounces or fraction of 2 ounces up to and including 8 ounces.

Bulk Third Class: Not less than either 20 pounds or 200 separately addressed identical pieces. Apply at P. O. for permit to mail.

Miscellaneous: 12 cents for each pound or fraction, but not less than 1 cent per piece.

Books, Seeds, Plants, etc.: 8 cents for each pound or fraction, but not less than 1 cent per piece. It must be separated by states and offices. Matter mailed at bulk rates can not be Registered, Insured or sent C. O. D.

## FOURTH CLASS—PARCEL POST

Fourth Class: Includes printed matter, merchandise and all other matter weighing in excess of 8 ounces except first and second class matter. Parcels limited to 100 inches length and girth combined. Weight limit 70 pounds.

For complete Parcel Post rates see next page.

Insure all valuable parcels.

For quick delivery, send Special Delivery and Special Delivery air mail

Parcels Mailed on Rural Routes: 2 cents less per parcel than indicated in foregoing table for local delivery and 3 cents less for other than local delivery.

Library Books: First, Second and Third Zones, and State, 3 cents for first pound or fraction, 1 cent each additional pound or fraction. Libraries, organizations or associations entitled to mail books at these rates should apply at post office for permit.

Note—On parcels for delivery in first and second zones where shortest practicable mail route is 300 miles or more, the rate is 3 cents for first pound and 2 cents for each additional pound.

### General Instructions

Pack well—wrap securely—address plainly.

Show name of sender.

Fragile and perishable matter should be so marked.

## FOREIGN POSTAGE RATES

Letters: 3 cents for each ounce or fraction thereof, to the following countries: Canada, Newfoundland (including Labrador), Cuba, Dominican Republic, Haiti, Mexico, Spain (including possessions), and all Central and South American countries except British, Dutch, French Guiana and British Honduras.

Postal Cards: 2 cents; double, 4 cents.

To all other foreign countries:

Letters: 5 cents for the first ounce and 3 cents for each additional ounce or fraction thereof.

Postal Cards: 2 cents; double, 4 cents.

Printed Matter, including newspapers, to all foreign countries, 1½ cents for each 2 ounces or fraction of 2 ounces.

Parcels: Rates and conditions vary to different countries; call at post office.

## AIR MAIL INFORMATION

Six cents for each ounce or fraction thereof. Air mail can be insured, registered, sent C. O. D. or special delivery when the additional fees are prepaid. It may be deposited in any mail box, but must be indorsed "VIA AIR MAIL" underneath the postage stamp immediately above the address.

## FEEES IN ADDITION TO REGULAR POSTAGE

### Special Delivery

First Class Only—2 pounds or less, 10 cents; over 2, not over 10 pounds, 20 cents; over 10 pounds, 25 cents.

Mail Other Than That of the First Class will be given the most expeditious handling and transportation practicable, and in addition receive immediate delivery at the office of address, upon payment of the following special-delivery fees:

2 lbs. or less.....15 cents  
Over 2 lbs. but not over 10 pounds.....25 cents  
Over 10 lbs.....35 cents  
"Special Delivery" must be so indorsed.

### Special Handling

(Assures first class transportation but not special delivery service)

Fourth Class: 2 pounds or less, 10 cents; over 2, not over 10 pounds, 15 cents; over 10 pounds, 20 cents. "Special Handling" must be so indorsed.

### Money Orders

Not exceeding \$ 2.50.....6 cents  
Not exceeding 6.00.....8 cents  
Not exceeding 10.00.....11 cents  
Not exceeding 20.00.....13 cents  
Not exceeding 40.00.....15 cents  
Not exceeding 60.00.....18 cents  
Not exceeding 80.00.....20 cents  
Not exceeding 100.00.....22 cents

### Registry

Up to \$5.....	\$5 to 25.....	25 to 50.....	50 to 75.....	75 to 100.....	100 to 200.....	200 to 300.....	\$300 to \$400.....	\$400 to \$500.....	\$500 to \$600.....	\$600 to \$700.....	\$700 to \$800.....	\$800 to \$900.....	\$900 to \$1000.....
Fee \$0.15	Fee .18	Fee .20	Fee .25	Fee .30	Fee .40	Fee .50	Fee .60	Fee .70	Fee .80	Fee .85	Fee .90	Fee .95	Fee 1.00

All registered matter may be sent C. O. D. Fee for return receipt, except C. O. D.'s, 3 cents extra. Limit of C. O. D. collection \$200. When declared value of registered matter exceeds \$1,000 a small zone rate surcharge is made.

### Collect-On-Delivery

Not exceeding \$ 5.00.....12 cents  
Not exceeding 25.00.....17 cents  
Not exceeding 50.00.....22 cents  
Not exceeding 100.00.....32 cents  
Not exceeding 150.00.....40 cents  
Not exceeding 200.00.....46 cents

### Insurance

Indemnity not exceeding \$ 5.00.....5 cents  
Indemnity not exceeding 25.00.....10 cents  
Indemnity not exceeding 50.00.....15 cents  
Indemnity not exceeding 100.00.....25 cents  
Indemnity not exceeding 150.00.....30 cents  
Indemnity not exceeding 200.00.....35 cents

Fee for return receipt, 3 cents extra.

Registered, insured, or C. O. D. mail, the delivery of which is restricted to the addressee only, or to the addressee or order, will be subject to an additional fee of 10 cents at the time of mailing.

### Senders' Receipts for Domestic Ordinary Mail

A receipt (certificate of mailing) is furnished the sender of domestic ordinary mail of any class upon payment of 1 cent for each piece. This fee does not insure against loss, rifling or damage, but merely furnishes evidence of mailing, and no receipt will be obtained from the addressee on delivery. Additional duplicate receipts may be obtained upon payment of 1 cent each.

## AIDS TO PROPER MAILING

Write name and address plainly and completely.

Place name and address of sender on all matter.

Prepay postage fully on all letters and parcels.

Always address mail for city delivery to street and number and request correspondents to do likewise.

Use designation North or South, East or West when it is a proper part of the address and save delay in delivery.

Insure valuable parcels.

Wrap parcel post carefully in heavy paper and tie knots securely.

You will often gain a day's time in delivery by depositing mail as soon as it is ready.

## FOR YEAR ENDING NOVEMBER 1938

EXTENSION OF TRANS-PACIFIC AIR  
MAIL SERVICE

Service on foreign air-mail route from San Francisco, California, by Honolulu, Hawaii, and Guam for Manila, will be extended from Manila via Macao, Portuguese colony in Asia, to Hong Kong, and return from Hong Kong direct to Manila, effective with westbound flight due to leave San Francisco, Wednesday, April 21, 1937, and eastbound flight due to leave Hong Kong, Thursday, April 29, 1937.

The schedule for the first flight on the route as extended and the flight each week thereafter will be as follows:

Wednesday	.....Lv. San Francisco	.....Ar. Tuesday
Thursday	.....Ar. Honolulu	.....Lv. Monday
Friday	.....Lv. Honolulu	.....Ar. Sunday
Monday	.....Ar. Guam	.....Lv. Saturday
Tuesday	.....Lv. Guam	.....Ar. Friday
Tuesday	.....Ar. Manila	.....Lv. Thursday
Wednesday	.....Lv. Manila	.....Ar. Wednesday
Wednesday	.....Ar. Macao	.....Ar. Wednesday
Wednesday	.....Ar. Hong Kong	.....Lv. Thursday

Connection will be made at Hong Kong with the Chinese domestic air-mail system for the coastal cities, Shanghai, Nanking, Peiping and the interior of China. Connection will also be made with the British air-mail route for Straits Settlements, Siam, India, Dutch East Indies and Australia. Articles for points beyond Hong Kong bearing the postage specified below, will be given onward dispatch by air from Hong Kong where they can be advanced thereby. Otherwise they will be given onward dispatch by ordinary means.

## New and Reduced Air-Mail Rates

(Effective with flight due to leave San Francisco April 21)

	Per ½ Ounce
Hawaii .....	20 cents
Guam .....	40 cents
Philippine Islands .....	50 cents
Macao .....	70 cents
Hong Kong .....	70 cents
China .....	70 cents
Japan .....	70 cents
Indo-China .....	70 cents
Malaya (Straits Settlements).....	70 cents
Siam .....	70 cents
India .....	70 cents
Dutch East Indies .....	70 cents
New Zealand .....	70 cents

(These rates also cover service by air-mail route in the United States)

Articles for Hawaii, Guam and the Philippines should be marked prominently (just over the address) "By Air Mail—Trans-Pacific Route." Articles destined to all foreign countries should bear the blue label "Par Avion—By Air Mail" and be marked (just over the address) "By Trans-Pacific Route."

Air mail for the above service, deposited at the Rochester post office not later than 12:30 P. M. on Tuesday, will connect with the plane leaving San Francisco on Wednesday.

**WILLIAM J. HUNT, Postmaster**



# MISCELLANEOUS DEPARTMENT FOURTH CLASS OR PARCEL POST RATES

Weight in pounds	Local	Zones							
		Up to 50 miles	50 to 150 miles	150 to 300 miles	300 to 600 miles	600 to 1000 miles	1000 to 1400 miles	1400 to 1800 miles	Over 1800 miles
1.....	\$0.07	\$0.08	\$0.08	\$0.09	\$0.10	\$0.11	\$0.12	\$0.14	\$0.15
2.....	.08	.10	.10	.11	.14	.17	.19	.23	.26
3.....	.08	.11	.11	.13	.17	.22	.26	.32	.37
4.....	.09	.12	.12	.15	.21	.27	.33	.41	.48
5.....	.09	.13	.13	.17	.24	.33	.40	.50	.59
6.....	.10	.14	.14	.19	.28	.38	.47	.59	.70
7.....	.10	.15	.15	.21	.31	.43	.54	.68	.81
8.....	.11	.16	.16	.23	.35	.49	.61	.77	.92
9.....	.11	.17	.17	.25	.38	.54	.68	.86	1.03
10.....	.12	.18	.18	.27	.42	.59	.75	.95	1.14
11.....	.12	.19	.19	.29	.45	.64	.82	1.04	1.28
12.....	.13	.21	.21	.31	.49	.70	.89	1.13	1.38
13.....	.13	.22	.22	.33	.52	.75	.96	1.22	1.47
14.....	.14	.23	.23	.35	.56	.80	1.03	1.31	1.58
15.....	.14	.24	.24	.37	.59	.86	1.10	1.40	1.69
16.....	.15	.25	.25	.39	.63	.91	1.17	1.49	1.80
17.....	.15	.26	.26	.41	.66	.96	1.24	1.58	1.91
18.....	.16	.27	.27	.43	.70	1.02	1.31	1.67	2.02
19.....	.16	.28	.28	.45	.73	1.07	1.38	1.76	2.13
20.....	.17	.29	.29	.47	.77	1.12	1.45	1.85	2.24
21.....	.17	.30	.30	.49	.80	1.17	1.52	1.94	2.35
22.....	.18	.32	.32	.51	.84	1.23	1.59	2.03	2.46
23.....	.18	.33	.33	.53	.87	1.28	1.66	2.12	2.57
24.....	.19	.34	.34	.55	.91	1.33	1.73	2.21	2.68
25.....	.19	.35	.35	.57	.94	1.39	1.80	2.30	2.79
26.....	.20	.36	.36	.59	.98	1.44	1.87	2.39	2.90
27.....	.20	.37	.37	.61	1.01	1.49	1.94	2.48	3.01
28.....	.21	.38	.38	.63	1.05	1.55	2.01	2.57	3.12
29.....	.21	.39	.39	.65	1.08	1.60	2.08	2.66	3.23
30.....	.22	.40	.40	.67	1.12	1.65	2.15	2.75	3.34
31.....	.22	.41	.41	.69	1.15	1.70	2.22	2.84	3.45
32.....	.23	.43	.43	.71	1.19	1.76	2.29	2.93	3.56
33.....	.23	.44	.44	.73	1.22	1.81	2.36	3.02	3.67
34.....	.24	.45	.45	.75	1.26	1.86	2.43	3.11	3.78
35.....	.24	.46	.46	.77	1.29	1.92	2.50	3.20	3.89
36.....	.25	.47	.47	.79	1.33	1.97	2.57	3.29	4.00
37.....	.25	.48	.48	.81	1.36	2.02	2.64	3.38	4.11
38.....	.26	.49	.49	.83	1.40	2.08	2.71	3.47	4.22
39.....	.26	.50	.50	.85	1.43	2.13	2.78	3.56	4.33
40.....	.27	.51	.51	.87	1.47	2.18	2.85	3.57	4.44
41.....	.27	.52	.52	.89	1.50	2.23	2.92	3.74	4.55
42.....	.28	.54	.54	.91	1.54	2.29	2.99	3.83	4.66
43.....	.28	.55	.55	.93	1.57	2.34	3.06	3.92	4.77
44.....	.29	.56	.56	.95	1.61	2.39	3.13	4.01	4.88
45.....	.29	.57	.57	.97	1.64	2.45	3.20	4.10	4.99
46.....	.30	.58	.58	.99	1.68	2.50	3.27	4.19	5.10
47.....	.30	.59	.59	1.01	1.71	2.55	3.34	4.28	5.21
48.....	.31	.60	.60	1.03	1.75	2.61	3.41	4.37	5.32
49.....	.31	.61	.61	1.05	1.78	2.66	3.48	4.46	5.43
50.....	.32	.62	.62	1.07	1.82	2.71	3.55	4.55	5.54
51.....	.32	.63	.63	1.09	1.85	2.76	3.62	4.64	5.65
52.....	.33	.65	.65	1.11	1.89	2.82	3.69	4.73	5.76
53.....	.33	.66	.66	1.13	1.92	2.87	3.76	4.82	5.87
54.....	.34	.67	.67	1.15	1.96	2.92	3.83	4.91	5.98
55.....	.34	.68	.68	1.17	1.99	2.98	3.90	5.00	6.09
56.....	.35	.69	.69	1.19	2.03	3.03	3.97	5.09	6.20
57.....	.35	.70	.70	1.21	2.06	3.08	4.04	5.18	6.31
58.....	.36	.71	.71	1.23	2.10	3.14	4.11	5.27	6.42
59.....	.36	.72	.72	1.25	2.13	3.19	4.18	5.36	6.53
60.....	.37	.73	.73	1.27	2.17	3.24	4.25	5.45	6.64
61.....	.37	.74	.74	1.29	2.20	3.29	4.32	5.54	6.75
62.....	.38	.76	.76	1.31	2.24	3.35	4.39	5.63	6.86
63.....	.38	.77	.77	1.33	2.27	3.40	4.46	5.72	6.97
64.....	.39	.78	.78	1.35	2.31	3.45	4.53	5.81	7.08
65.....	.39	.79	.79	1.37	2.34	3.51	4.60	5.90	7.19
66.....	.40	.80	.80	1.39	2.38	3.56	4.67	5.99	7.30
67.....	.40	.81	.81	1.41	2.41	3.61	4.74	6.08	7.41
68.....	.41	.82	.82	1.43	2.45	3.67	4.81	6.17	7.52
69.....	.41	.83	.83	1.45	2.48	3.72	4.88	6.26	7.63
70.....	.42	.84	.84	1.47	2.52	3.77	4.95	6.35	7.74

NOTE 1.—On parcels collected on rural-delivery routes the postage will be 2 cents less than shown in the foregoing table when for local and 3 cents less when for other than local delivery, provided they are indorsed "Mailed on rural route."

NOTE 2.—The local rate applies to parcels mailed: (1) At any post office for local delivery at such office. (2) At any city letter-carrier office, for delivery by carriers from that office. (3) At any post office from which a rural route starts, for delivery on such route, or when mailed on a rural route for delivery at any other point thereon, or at the office from which the route starts, or for delivery on any other rural route starting from the same office.

NOTE 3.—Parcels weighing less than 10 pounds measuring over 84 inches but not more than 100 inches in length and girth combined are subject to a minimum charge equal to that for a 10-pound parcel for the zone to which addressed.

Weight limit, 70 pounds. Limit of size, 100 inches, length and girth combined.

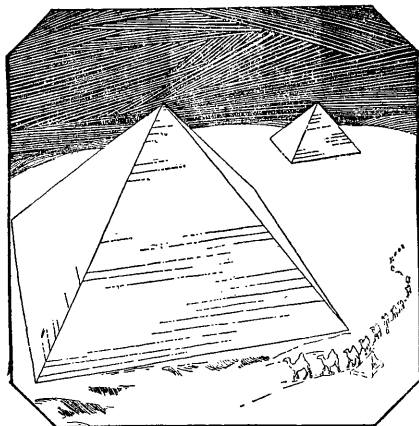
## POST OFFICES IN MONROE COUNTY

Post Office	Town
*Adams Basin.....	Ogden
†*Beechwood .....	Rochester
†*Brighton .....	Rochester
*Brockport .....	Sweden
†*Charlotte .....	Greece
*Chili .....	Chili
*Churchville .....	Riga
*Clarkson .....	Clarkson
*Clifton .....	Chili
*Cold Water.....	Gates
†Dewey av.....	Rochester
*East Rochester.....	Perinton
*Fairport .....	Perinton
Federal .....	Rochester
†*Forest Lawn.....	Webster
Garbutt .....	Wheatland
*Hamlin .....	Hamlin
*Henrietta .....	Henrietta
*Hilton .....	Parma
*Honeoye Falls.....	Mendon
*Industry .....	Rush
*Mendon .....	Mendon
*Mumford .....	Wheatland
*North Chili .....	Chili
*North Greece .....	Greece
*Penfield .....	Penfield
*Pittsford .....	Pittsford
*Point Pleasant.....	Irondequoit
*Rochester .....	Rochester
*Rochester Junction .....	Mendon
*Rush .....	Rush
*Scottsville .....	Wheatland
*Sea Breeze.....	Irondequoit
*Spencerport .....	Ogden
*Union Hill.....	Webster
*Walker .....	Hamlin
*Webster .....	Webster
*West Henrietta.....	Henrietta
*West Rush.....	Rush
*West Webster.....	Webster

\*Money Order Offices

†Discontinued for winter

‡Station of Rochester



# A Lasting Advertisement

**Insuring Maximum Coverage at Minimum  
Cost Is Now Available**

City Directory Advertising lives as long as the book is current. It is readily at hand and can, through cross indexing of proper representation, be made easy to find and fully informative. Any business-man, desirous of effectively registering a service or product, in such a manner as will form a permanent advertisement, owes it to himself and his business to be thoroughly informed on City Directory Advertising.

Your City Directory is not alone a local medium. By a system of distribution through nearly 500 City Directory Libraries, your advertisement takes on a national aspect. Send for descriptive Library Folder and Privilege Card.

**SAMPSON & MURDOCK CO., INC.**

**179 LINCOLN STREET - - BOSTON, MASS.**

*There are two kinds of Advertising*

That which the Buyer seeks, and that which is thrust upon him.

*Both are good*

*Display* advertising *suggests* wants and *creates* desire. Of its tremendous power many present day successes bear witness.

*Reference Advertising* steps in when the desire has been created. It shows where the goods can be purchased and gives information that the buyer wants *when he wants to buy*.

*A Connecting Link*

The weakness of display advertising is that often a need is not realized until the ad that suggested it is misplaced or thrown away.

A shrewd buyer usually looks the field over before buying and where is so logical a place to look as *in this book*.

*A Help to You*

In your buying, use the lists in this book. If you see a name in *heavy type* it is because that concern thought enough of your possible business to make it easy for you to find them. If it says "See page — —", you will find there information that will really help you.

*Are You Covered?*

Have you made it easy for buyers to find you, by putting a bold type listing under every heading where they might look for you or a competitor? Have you put information in the "Selling Section" that will really help a buyer, and point to *you* as the one who can serve him best?

If not, make a note to do it in the next edition, and let us tell you *now* how little it costs to be *protected*.

**SAMPSON & MURDOCK CO., INC.**

**179 LINCOLN STREET      -      BOSTON, MASS.**

## You may be remembered a hundred years from now

It seems a long time in this era of change but it is a fact that the influence of our forefathers is often carried on for generations.

Especially in business and financial affairs is the record of the past liable to be of vast importance to the present.

The silent testimony of old directories is often accepted by courts as valuable evidence and too much care cannot be taken by business men to insure that all such records are accurate and complete.

Unlike most other mediums for advertising, the Directory is kept on file in many law and public libraries for years after its immediate usefulness as an address book has disappeared and it becomes a permanent record of the firms and individuals listed therein.

A very small sum insures adequate representation from year to year and such record may prove of great service at some future date.

For particulars consult

**Sampson & Murdock Co.**

(INCORPORATED)

**179 LINCOLN STREET**

-

**BOSTON, MASS.**

# ROCHESTER SUBURBAN DIRECTORY

## REFERENCE DEPARTMENT

Where more information than is possible to give under the classified listings is placed on file for buyers reference. The value of this department is inestimable. It is an index of the best business interests of the city, and stands for them and the city in reference libraries all over the country, as well as on the desks of progressive business men. It is accessible to everybody, and the logical place to look for specific information.



**34    Agricultural Implements-Air Conditioning-Automobiles****Burr & Starkweather Company**

Farm, Dairy, Poultry and Contractors' Supplies  
Fertilizers and Seeds — Farm and Garden Tractors

BINDER TWINE, POWER and HAND LAWN MOWERS

*Dexter Washing Machines*

*Beacon Poultry Feeds*

Distributors of PROTANE GAS for Gasless Homes

Magic Chef, Glenwood Ranges

39-57 MT. HOPE AVENUE    -    -    -    ROCHESTER, N. Y.

PHONE: STONE 3016--3017

AUTOMATIC HEATING and AIR CONDITIONING

*economically more efficiently*

A complete and flexible line of G-E Automatic Heating (Oil & Gas) Air Conditioning (Winter, Summer or year 'round) equipment. Also a full line of Room Coolers and Air Circulators. We have units for every home or business need. Call us and we will be happy to give you full information.

PHONE MAIN 272



**QUINBY**

AIR CONDITIONING CORPORATION

618 E. MAIN STREET

**STEVE MOTORS**

DEALERS

Packard, Pontiac, Nash and Lafayette Motor Cars

**STEVE COAL CO., INC.**

*Solvay Coke    -    R. G. & E. Coke    -    'blue coal'*

413 MAIN STREET    —    Phone 66    —    E. ROCHESTER, N. Y.

NEW CARS

TRUCKS

USED CARS

**WHEELER**



**FAIRPORT**

120 NORTH MAIN STREET

*Use Our Budget Plan for Radios, Heaters, Tires,  
Repairs, Bicycles, Maytag Washers*

**G M A C  
PLAN**

PAYMENTS TO SUIT  
YOUR PURSE

**PHONES  
81-84**

Please mention this Directory when dealing with Advertisers

---

# **ALLING & MILES, INC.**

*Distributors of*

## **HUDSON MOTOR CARS**

Hudson Terraplane      Hudson Six      Hudson Eight

**82 Stone Street**

**Telephone STONE 2537**

---

## **THOMAS J. NORTHWAY, INC.**

**DISTRIBUTORS FOR**

### ***DeSoto and Plymouth Motor Cars***

Special Factory Equipment Plus Forty  
Years Experience will assure you of a satis-  
factory job and it will be priced in keeping  
with the times.

**100 EXCHANGE STREET**

**TEL. MAIN 7091**

---

## **Hoselton Chevrolet Company**

*Phone*  
**MONROE**  
**4081**

*for Economical Transportation*



*Phone*  
**E. ROCHESTER**  
**104**

**Guaranteed Used Cars with an O.K. Tag that Counts**

**161 E. COMMERCIAL ST., E. ROCHESTER**

---

If it weren't for the false notion about the high price of a directory hundreds of people would no longer deny themselves the information to be found in one.

**WHITING-BUICK, Inc.***“Dealers Since 1906”**Buick Sales  
Service**Used Cars*

352 EAST AVENUE

-

-

STONE 714

**COOL CHEVROLET CORP.***Passenger  
Cars**for Economical Transportation**Delivery  
Trucks*

Always a fine stock of GUARANTEED USED CARS  
 A modern SERVICE DEPT.—FLAT RATE CHARGES  
 SKILLED MECHANICS and FACTORY EQUIPMENT  
 is your SERVICE GUARANTEE

340-360 CULVER ROAD, ROCHESTER

Phone MONROE 2340

**WEBSTER AUTO CORP.***Authorized**Dealers*

Repairs on All Makes of Cars  
 Lubrication and Service  
 New and Used Cars

50 NORTH AVENUE

-

Phone WEBSTER 63

F. C. KLEM

W. L. KLEM

**KLEM CHEVROLET***for Economical Transportation*

Sales



Service

*For Better Service on All Cars*

GOODRICH SILVERTOWN BUDGET STORE

General Electric Refrigerators and Radios

28 W. MAIN ST.

Phone Webster 10

WEBSTER, N. Y.

Please mention this Directory when dealing with Advertisers

# Central Trust Company

## ROCHESTER, N. Y.



**Main Office**  
**25 MAIN ST. EAST**

**Brighton Branch**  
**1806 EAST AVENUE**

*Office Hours: from 9 A.M. to 3 P.M.*

*Saturdays Close at 12 M*

### Officers:

JOHN A. MURRAY, . . .	President
WILSON HAMILTON, . . .	Vice-President
JOHN H. RAUSCH, . . .	Asst. Vice-President
F. DWIGHT SAGE, . . .	Asst. Vice-President
RICHARD C. MEISENZAHL, . . .	Secretary
HOMER D. KLUMPP, . . .	Treasurer
FRANCIS P. BEATTIE, . . .	Asst. Secretary
EDMUND J. MEYER, . . .	Auditor

### TRUST DEPARTMENT

D. R. CHAMBERLAIN	Vice-President and Associate Trust Officer
THOMAS J. SERCU, . . .	Vice-President and Trust Officer
E. M. VOGEL . . .	Assistant Trust Officer

### Directors:

ESTEN A. FLETCHER	JOHN D. PIKE
EZRA A. HALE	FRANK J. SMITH
WILSON HAMILTON	GEORGE S. VAN SCHAICK
FRANTZ HAVERSTICK	ALBERT E. VOGT
MORTIMER R. MILLER	LOUIS A. WEHLE
JOHN A. MURRAY	DWIGHT S. WETMORE
THOMAS N. NAGLE	OLIVER B. WOODFILL

Foreign Drafts Issued on all parts of the world. Letters of Credit and Travelers' Checks available for Foreign Travel. Interest Allowed on Special Deposits. Acts as Executor of wills, Administrator of Estates, Trustee under corporate and individual trust agreements.

We invite the Accounts of Corporations, Firms and Individuals, and are prepared to furnish such depositors with business facilities consistent with their balances and standing.

**Safe Deposit Boxes for Rent from \$3.00 per year up**

**MAIN OFFICE OR BRIGHTON BRANCH**  
**NIGHT DEPOSITORY, MAIN OFFICE, 25 MAIN ST. E.**

*Member Federal Deposit Insurance Corporation*

# Genesee Valley Trust Company

EXCHANGE and BROAD ST.

## OFFICERS

W. DEWEY CRITTENDEN  
*Chairman of the Board*

ALEXANDER T. SIMPSON.....President  
FRANK S. THOMAS.....Executive Vice-President  
GEORGE E. VARCOE.....Vice-President  
JOHN W. JARDINE.....Vice-President  
JOHN P. DAY...V-Pres. & Assoc. Trust Officer  
W. W. STEELE.....Asst. Vice-President  
HOWARD W. MATTHEWS.....Treasurer  
JOSEPH P. COLLINS.....Trust Officer  
T. CHESTER MEISCH.....Secretary  
NORBERT D. GREENE.....Asst. Secretary  
ROBERT C. TAIT.....Asst. Trust Officer



## BOARD OF DIRECTORS

WHEELER D. ALLEN  
Vice-Pres. C. P. Ford Co., Inc.

LEON L. BENHAM  
President Richardson Corporation

KENDALL B. CASTLE  
Attorney  
Trustee, University of Rochester

GEORGE B. CAUDLE  
President Kelso Laundry  
Director, American Laundry Machinery Co.

BRACKETT H. CLARK  
Secretary, Cockrane-Bly Company

GEORGE H. CLARK  
Trustee, Security Trust  
Director, Eastman Kodak Co.  
Treasurer Mechanics Institute

W. DEWEY CRITTENDEN, Chairman of the Board  
President and Treas., F. & C. Crittenden Co.  
Chairman Board of Brewster-Crittenden & Co.

EDWARD J. DOYLE  
President, Doyle Gasoline and Oil Co., Inc.

ALBERT V. DURAND  
President Smith-Gormley Co., Inc.

WILLIAM B. HALE  
Chairman of the Board  
Mechanics Savings Bank  
Lawyers' Co-operative Publishing Co.  
Trustee, University of Rochester

CARL S. HALLAUER  
Vice-President Bausch & Lomb Optical Co.  
President Bausch & Lomb Optical Co., Ltd., Canada

WALTER L. HEUGHES  
Pres. F. L. Heughes & Co., Inc.

THOMAS J. NORTHWAY  
President, Thomas J. Northway, Inc.

ALEXANDER T. SIMPSON  
President

FRANK S. THOMAS  
Executive Vice-President

KENNETH C. TOWNSON  
Geo. D. B. Bonbright & Co.  
Director, Stecher Lithograph Co.  
Director, Sibley, Lindsay & Curr Co.

LEWIS S. WEST  
Vice-Pres. and Gen. Mgr. Merchants Despatch  
Transportation Co.

ERNEST C. WHITBECK  
Attorney

HENRY T. WILLIAMS  
Physician

GEORGE M. WOOD  
Pres. Lawyers Co-operative Publishing Co.

## TRUST DEPARTMENT SERVICES

In appointing the Genesee Valley Trust Company as your Executor, Trustee, or to act in any other fiduciary capacity you are assured of qualifications impossible of attainment by an individual acting in the same capacities.

We invite you to consult our Officers, which may be done in complete confidence, without the slightest obligation.

Safe Deposit Boxes in Fire and Burglar Proof Vaults

*Member Federal Deposit Insurance Corporation*

# **LINCOLN-ALLIANCE**

## **BANK AND TRUST COMPANY**

**Main Office—183 MAIN STREET EAST**

**Lincoln Office, 33 Exchange Street**

**Lake Avenue Office, 1495 Lake Avenue**

**West End Office, 886 Main Street West**

**East End Office, 460 No. Goodman Street**

**Monroe Avenue Office, 560 Monroe Ave.**

**Portland-Clifford Office,  
520 Portland Avenue**

**Newark Office, Newark, N. Y.**

**Brockport Office, Brockport, N. Y.**

### **EVERY BANKING SERVICE**

Checking Accounts, Interest Accounts,  
Trust Services, Business Loans, Personal  
Loans, Safe Deposit Boxes, Travelers  
Checks, Foreign Drafts, Etc.

### **OFFICERS**

**RAYMOND N. BALL, President**

**RAYMOND F. LEINEN, Exec. Vice Pres.**

**EDMUND J. TUETY, Secretary**

### **VICE PRESIDENTS**

**Thomas R. Baker**

**David C. Barry**

**Thomas R. Dwyer**

**Swayne P. Goodenough**

**Arthur J. Meisenzahl**

**John W. Remington**

**William G. Watson**

**Edward M. Weingartner**

**Raymond J. White**

**Frederick D. Whitney**

### **ASST. SECRETARIES**

**Lyle G. Antis**

**Ogden Butler**

**Roy B. Combs**

**Lincoln Doumaux**

**Clarence S. Greene**

**William Groh**

**Cyril G. Kress**

**Robert E. Macon**

**Clarence E. Marsh**

**Luke T. Smith**

**William B. Valsey**

**Arthur B. Weston**

### **TRUST DEPT.**

**John W. Remington**

*Vice Pres. and Trust Officer*

**William A. Rose**

*Asst. Trust Officer*

**Raymond H. Schlegel**

*Asst. Trust Officer*

**Robert E. Towey**

*Asst. Trust Officer*

### **DIRECTORS**

**Mortimer Adler**

**Joseph T. Ailing**

**Raymond N. Ball**

**Edward Bausch**

**John P. Boylan**

**James C. Dryer**

**Albert B. Eastwood**

**Bernard E. Finucane**

**Marion B. Folsom**

**Frank E. Gannett**

**James E. Gleason**

**Fred C. Goodwin**

**Fred H. Gordon**

**Edward A. Halbleib**

**Thomas J. Hargrave**

**Sol Heumann**

**Albert A. Hopeman**

**Edward G. Miner**

**Joseph M. Neisner**

**Rush Rhees**

**Herman Russell**

**Albert F. Sulzer**

**Raymond L. Thompson**

**Douglas C. Townson**

**Herbert J. Winn**



### **ASST. VICE PRES.**

**Clarence E. Higgins**

**George C. Lennox**

**Franklin S. Meinhart**

**G. Alfred Sproat**

**Richard A. Sweeney**

**AUDITOR, Roy E. Miller**

*Member Federal Deposit Insurance Corporation*

*Member Federal Reserve System*



# ROCHESTER TRUST and Safe Deposit COMPANY

Main Street West and Exchange

Capital

**\$1,000,000**



Surplus

**\$3,000,000**

## Fifty Years Experience

Complete Banking and Trust Service for Individuals and Corporations  
Commercial, Collateral and Mortgage Loans—Securities Information  
—All Trust Functions—Safe Deposit Boxes and Storage Vaults.

### OFFICERS

ROBERT C. WATSON President	WILLARD I. LUESCHER Asst. Vice Pres.
JOHN CRAIG POWERS Vice Pres. and Chr. Ex. Com.	HARRY L. EDGERTON Asst. Secretary
EDWARD BAUSCH Vice President	JOSEPH B. HOYT Asst. Secretary Mgr. Securities Dept.
GEORGE H. HAWES Vice Pres. and Sec.	HARRY W. SAGE Asst. Secretary
LEIGH H. PIERSON Trust Officer	FAY E. WRIGHT Asst. Trust Officer
EDWARD L. WILLIAMS Treasurer	ALBERT D. STEWART, JR. Asst. Trust Officer
ALFRED J. LEGGETT Asst. Vice Pres.	EDWARD HARRIS, 2d Asst. Trust Officer

### DIRECTORS

ROBERT C. WATSON	HERBERT J. WINN
EDWARD G. MINER	FREDERICK S. MILLER
R. ANDREW HAMILTON	SAMUEL E. DURAND
FRANK T. SAGE	WILLIAM F. STRANG
GEORGE H. HAWES	VINCENT S. BENNETT
JOHN CRAIG POWERS	OSCAR H. PIEPER
EDWARD BAUSCH	THEODORE C. BRIGGS
JOSEPH MICHAELS	RICHARD M. HARRIS



MAIN STREET WEST AND EXCHANGE

Rochester's First Trust Company—Operating under Perpetual Charter  
Member Federal Deposit Insurance Corporation

# SECURITY TRUST COMPANY

## OF ROCHESTER

**OFFICERS**

**JAMES S. WATSON**  
President

**CARL S. POTTER**  
Vice-President

**EDWARD HARRIS**  
Vice-President

**JESSE W. LINDSAY**  
Vice-President

**WILLIAM H. STACKEL**  
Vice-Pres. and Trust Officer

**GEORGE F. STONE**  
Secretary

**EARL G. HOCH**  
Treasurer

**HARVEY W. MILLER**  
Assistant Secretary

**DAVID GALES**  
Assistant Secretary

**FREDERICK J. BENDON**  
Assistant Secretary

**SCHUYLER C. WELLS, JR.**  
Vice Trust Officer

**GRACE E. HOWIE**  
Assistant Trust Officer

**SEWARD H. CARE**  
Assistant Trust Officer

**BENJAMIN E. LULL**  
Assistant Trust Officer

**EVA M. SCHREINER**  
Assistant Trust Officer

**KENNETH C. WILD**  
Mortgage Realty Officer

**DIRECTORS**

**JAMES S. WATSON**  
**RUFUS K. DRYER**  
**CARL F. LOMB**  
**MORLEY A. STEIN**  
**DANIEL M. BEACH**

**HARPER SISLEY**  
**FRANK W. LOVEJOY**  
**THOMAS G. SPENCER**  
**HERBERT EISENHART**  
**CARL S. POTTER**

**WALTER L. TODD**  
**GEORGE H. CLARK**  
**WESLEY M. ANGLE**  
**BERNARD E. FINUCANE**  
**ARTHUR F. REED**

Interest Paid on Deposits. Special attention given to handling Estates and Trusts. Money to Loan on Approved Securities. Designated by Superintendent of Banking Department as Depository for Reserve Funds of State Banks. Checks on Foreign Cities, Letters of Credit and Travelers Checks issued.

**SAFE DEPOSIT VAULTS FOR RENT** in our Electrically Protected Burglar-Proof Vault. Valuables in Trunks or Packages cared for. Moderate charges.

### Main Street, East and Water Street, South

*Member Federal Deposit Insurance Corporation*

## Banks

# UNION TRUST COMPANY

## OF ROCHESTER

19 MAIN ST., W. - ROCHESTER, N. Y.

*A Marine Midland Bank*

MEMBER FEDERAL DEPOSIT INSURANCE CORPORATION

Every Banking Service

## OFFICERS

*President*

WILLIAM W. FOSTER

## MAIN OFFICE

*Vice-Presidents*

EDWARD J. MEYER,  
Comptroller  
ELMER B. MILLIMAN  
DELOSS M. ROSE, Secretary  
BENJAMIN F. SAWIN  
CARL R. SNIDER

*Treasurer*

CHARLES H. ESHELMAN

*Assistant Vice-Presidents*

JAMES A. CAMERON  
ROBERT K. FAULKNER  
JOHN W. MALEENEY  
EDWARD R. MURPHY  
HUBERT L. STEVENSON  
HERMON L. UNDERHILL

*Auditor*

HENRY P. SCHLENKER

*Assistant Secretaries*

HECTOR M. HARMON  
ALFRED F. JANUS  
LEWIS H. MORGAN  
WILLIAM J. VOIZ

*Assistant Auditor*

F. ARTHUR ABEL

## TRUST DEPARTMENT

*Vice-President and Trust Officer*

NELSON E. LENGEMAN

*Assistant Trust Officers*

ARTHUR S. CARRUTHERS  
also Trust Investment Officer  
R. REED GEORGE  
LOUISE A. SCHOFIELD

## INVESTMENT DEPARTMENT

*Assistant Vice-Pres.*

CHARLES J. GRATE

## FOREIGN DEPARTMENT

*Manager*

GORDON F. WOOD

MERCHANTS-EAST AVENUE  
OFFICE*Vice-Presidents*

ALBERT S. NEWELL  
CHESTER J. SMITH

*Assistant Vice-Presidents*

GROVER C. BRADSTREET  
CHARLES BROUMOWSKY

*Assistant Secretary*

JOHN W. DWYER

## OTHER CITY OFFICES

## CLIFFORD-JOSEPH OFFICE

*Assistant Vice-Pres.*

A. JOSEPH LONDON

## CHARLOTTE OFFICE

*Manager*

GUSTAVE MICHELS

## NORTH-HUDSON OFFICE

*Manager*

CHARLES H. CLOSIN

## LYELL-SARATOGA OFFICE

*Manager*

LOUIS M. BOLT

## CULVER OFFICE

*Assistant Secretary*

AVERY S. GILBERT

## CHILI-THURSTON OFFICE

*Manager*

HARRY N. FREY

DEWEY-DRIVING PARK  
OFFICE*Manager*

CHARLES C. DUNPHREY

## OUT OF TOWN OFFICES

## AVON OFFICE

*Assistant Vice Pres.*

O. KENNETH COOPER

## SODUS OFFICE

*Assistant Vice Pres.*

FRANK H. HELMBOLD

## WEBSTER OFFICE

*Assistant Vice Pres.*

ARTHUR F. KORTZ

## PALMYRA OFFICE

*Assistant Vice President*

CLIFFORD G. ADAMS

## DIRECTORS

JOHN L. KEENAN

Franklin Institute

CLARENCE S. LUNT

C. S. Lunt &amp; Co.

J. E. MCKELVEY

Director, Richardson Corp.

GILBERT E. MOSHER

Pres. The Haloid Company

CHARLES P. SCHLEGEL

Pres. Schlegel Manufacturing Co.

CHARLES WINSLOW SMITH

Treas. Sherwood Shoe Co.  
Trustee East Side Savings Bank

OSCAR B. SPIEHLER

Sec.-Treas. Big Elm Dairy Co.  
Trustee East Side Savings Bank

ADOLPH STUBER

Asst. Vice-President  
Eastman Kodak Co.

ARTHUR E. SUTHERLAND

Official Referee Supreme Court of  
New York

GEORGE L. SWAN

Pres. Gorsline & Swan  
Construction Co.

FRED K. THOMPSON

Pres. Cramer-Force Co.

CORNELIUS G. VAN NIEL

General Comptroller, Eastman  
Kodak Co.

LEWIS S. WEST

Vice Pres. and General Manager  
Despatch Shop, Inc.

GEORGE E. BECKER  
Pres., Marine Midland Group, Inc.

SELDEN S. BROWN  
Attorney

J. ALLEN FARLEY  
Treas. E. P. Reed & Co.  
Trustee Monroe County Savings Bank

WILLIAM W. FOSTER  
President  
Union Trust Company of Rochester

JAMES F. HAMILTON  
Pres., Morris Plan Industrial Bank  
Rochester

KENNETH B. KEATING  
Attorney  
Harris, Beach, Folger, Bacon &  
Keating


## Resources

\$31,265,806.26

## Surplus

(Investment Value)

\$3,094,254.46



*In the Heart of the Shopping District*

# EAST SIDE SAVINGS BANK

MAIN STREET *at the corner of* CLINTON AVE. SOUTH

## TRUSTEES

WILLIAM BAUSCH  
R. ANDREW HAMILTON  
OSCAR B. SPIEHLER  
HAMILTON C. GRISWOLD  
HERMAN C. SIEVERS  
ARTHUR A. BARRY  
JOSEPH H. ZWEERES  
CHARLES WINSLOW SMITH  
SOL HEUMANN  
RAYMOND L. THOMPSON  
CHARLES T. CROUCH  
ALEXANDER M. BEEBEE  
HENRY B. ALLEN  
LOUIS S. FOULKES, Jr.  
HENRY W. KIMMEL



## A CORNER on Saving

The East Side Savings Bank has *the* corner on convenience for your savings account.

Money deposited during the first three business days of any month draws interest from the first of the month if left until the end of the quarter. Interest is credited to accounts December 1 and June 1.

*Safe Deposit Boxes*  
\$3.00 per year and up

## OFFICERS

HERMAN C. SIEVERS Chairman of the Board	E. L. GOETZMAN Treasurer
JOSEPH H. ZWEERES President	PHILIP O. WILLIAMS Secretary
HENRY B. ALLEN Vice-President	C. H. BOORMAN Assistant Treasurer
R. A. HAMILTON Vice-President	ALEXANDER G. HAY Assistant Secretary
OSCAR B. SPIEHLER Vice-President	LEWIS A. PEAR Assistant Secretary
JOHN W. F. SWANTON Comptroller	H. C. GRISWOLD Attorney

# MONROE COUNTY SAVINGS BANK

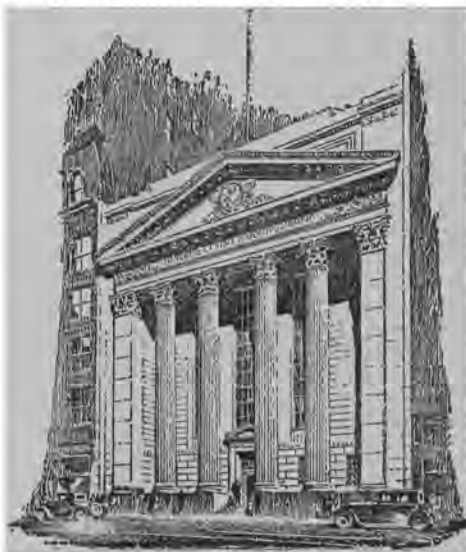
INCORPORATED 1850

## OFFICERS

RUFUS K. DRYER.....	Chairman of the Board
GEORGE D. WHEDON.....	President
EDWARD BAUSCH.....	Vice-President
J. ALLEN FARLEY.....	Vice-President
FRANK T. TAYLOR.....	Treasurer
FRANK E. DONNELLY.....	Secretary
A. DEWEY BACON.....	Asst. Secretary
WALTER H. COUCHMAN.....	Asst. Secretary
JOSEPH G. KUNZ.....	Asst. Secretary
HAROLD F. LEDERMAN.....	Asst. Secretary
J. WESLEY RIBEY.....	Asst. Secretary
FRANK C. LEAPER.....	Auditor
STEWART & SPENCER.....	Counsel

## TRUSTEES

RUFUS K. DRYER  
EDWARD BAUSCH  
JOSEPH MICHAELS  
W. OSBORNE ASHLEY  
CHARLES F. WRAY  
J ALLEN FARLEY  
GEORGE D. WHEDON  
EUGENE M. LOWENTHAL  
AUGUSTINE J. CUNNINGHAM  
WILMOT V. CASTLE  
SMITH SHELTON  
JOSEPH F. WELLER  
VINCENT S. BENNETT  
JOSEPH F. TAYLOR  
ALBERT F. SULZER



*Complete Savings Bank Service*

*Two Convenient Offices*

**35 STATE STREET                      2 EAST AVENUE**  
**ROCHESTER, N. Y.**



# ROCHESTER SAVINGS BANK

(INCORPORATED 1831)

**Resources - - \$67,693,000**

**More than 102,000 Depositors**



**West Main Street Office**  
**47 WEST MAIN ST.**

## OFFICERS

EDWIN ALLEN STEBBINS  
*President*  
JAMES S. WATSON  
*Vice-President*  
EDWARD HARRIS  
*Vice-President and Attorney*  
CHARLES F. TURTON  
*Vice-President*  
JOHN C. HOSKING  
*Secretary*  
CLYDE T. SUTTON  
*Treasurer*  
JAMES W. GRAY  
*Assistant Secretary*  
FRANK L. NIED  
*Assistant Secretary*  
ARTHUR H. LAUTERBACH  
*Assistant Secretary*  
HARRY N. KENYON  
*Assistant Secretary*  
WALTER L. SCHMID  
*Assistant Secretary*  
GEORGE C. WILCOX  
*Assistant Attorney*

## TRUSTEES

JAMES S. WATSON  
ERICKSON PERKINS  
J. CRAIG POWERS  
EDWARD HARRIS  
DANIEL M. BEACH  
E. ALLEN STEBBINS  
HERBERT J. WINN  
WALTER L. TODD  
M. H. EISENHART  
CHARLES F. TURTON  
HARPER SIBLEY  
ALBERT A. HOPEMAN  
MARION B. FOLSOM  
THOMAS G. SPENCER  
RICHARD M. HARRIS  
JAMES P. B. DUFFY  
JOHN R. SIBLEY



**Franklin Street Office**  
**40 FRANKLIN STREET**

**SAFE DEPOSIT BOXES FOR RENT FROM \$3.00  
PER YEAR UP AT THE FRANKLIN STREET OFFICE**

# The Mechanics Savings Bank

21 EXCHANGE STREET

Branch, 89-91 EAST AVENUE

Gas and Electric Building

Rochester, N. Y.

## ..OFFICERS..

WILLIAM B. HALE . . . . .	Chairman of Board
WENDELL J. CURTIS . . . . .	President
JAMES C. CLEMENTS . . . . .	Vice-President
GEORGE WENDT . . . . .	Vice-President and Secretary
ALEXANDER M. KESSELRING . . . . .	Assistant Secretary
EUGENE J. BODETTE . . . . .	Assistant Secretary
OSCAR J. BOTT . . . . .	Assistant Secretary
MICHAEL M. SPANG . . . . .	Assistant Secretary
HELEN A. WIGG . . . . .	Cashier
ALFRED T. HALL . . . . .	Assistant Cashier
JACOB CUSIMANO . . . . .	Assistant Cashier
CURTIS FITZ SIMONS . . . . .	Attorney

## ..TRUSTEES..

Wendell J. Curtis	Gilbert J. C. McCurdy	Curtis FitzSimons
William B. Hale	Herbert W. Bramley	Arthur W. Beale
James C. Clements	George Wendt	J. Sawyer Fitch
Frederick S. Miller	Arthur J. Gosnell	Dr. Albert K. Chapman
Edward A. Halbleib	Charles F. Hutchison	Charles T. DePuy

When you want to know how to spell a word you look in the dictionary. When you want to know how to spell a name or get a correct address you look in the directory which is the business dictionary of your city. Your Business properly displayed in the directory of your city will register your products or services in the mind of the prospective customer and get results.

**SAMPSON & MURDOCK CO., Inc.**

*Directory Publishers*

179 LINCOLN STREET

BOSTON, MASS.

**Brokers**

47

GEORGE D. B. BONBRIGHT  
RAYMOND J. BANTEL

CHARLES C. LEE

WILLIAM W. HIBBARD  
HARTWELL P. MORSE

JOHN H. KITCHEN  
KENNETH C. TOWNSON

**GEORGE D. B. BONBRIGHT & CO.****100 POWERS BUILDING***Phone Main 4830**Members***NEW YORK STOCK EXCHANGE****CHICAGO BOARD OF TRADE****Associate Members New York Curb Exchange****NEW YORK****BUFFALO****BINGHAMTON****ABBOTT, PROCTOR & PAINE***Successors to A. J. Wright & Co.*

ESTABLISHED 1865

**MEMBERS NEW YORK STOCK EXCHANGE — CHICAGO BOARD OF TRADE****STOCKS****COMMODITIES****BONDS**

DAVID B. LITTLE, Manager

**HOTEL SENECA ARCADE****PHONE STONE 720**

New York Curb Exchange

New York Cotton Exchange

New York Produce Exchange

New York Cocoa Exchange, Inc.

New York Coffee and Sugar Exchange, Inc.

Chicago Stock Exchange

Chicago Mercantile Exchange

Commodity Exchange, Inc.

Montreal Curb Market

Canadian Commodity Exchange, Inc.

WALTER H. BAUMER  
HAROLD M. RECKLING

ARTHUR G. MOORE

T. WILKINSON RUSSELL  
ERICKSON PERKINS, Sr.

**ERICKSON PERKINS & CO.***MEMBERS***New York Stock Exchange***ASSOCIATE MEMBERS***New York Curb Exchange****134-145 POWERS BUILDING****-****PHONE MAIN 1144****NEW YORK****BUFFALO**

**This Book is Your Silent  
Salesman**

**ADVERTISE AND PUT IT TO WORK**


---

**Please mention this Directory when dealing with Advertisers**



## ***Building Materials***

---

### **MORSE SASH & DOOR CO.**

*Doors, Windows, Interior Trim, Stair  
and Porch Work, Etc.*

TELEPHONE 1835 MAIN

FORD ST. and WAVERLY PL. ROCHESTER, N. Y.

---

Established 1873

Incorporated 1927

### **ROCHESTER LIME and CEMENT CORPORATION**

***BUILDING AND BLASTING MATERIALS***

Steel Houses and Buildings

OFFICE AND WAREHOUSE 174 COLVIN STREET - ROCHESTER, N. Y.

*Telephone GENESEE 317*

---

### **A. N. MARTIN SONS, Inc.**

***Building Materials***

*"Cellar to Roof"*

CURTIS WOODWORK

111 COMMERCIAL STREET WEBSTER, N. Y.

*PHONES WEBSTER 25—26*

---

### **WHEN YOU BUILD**

***YOU BUILD TO LAST—  
IF YOU ARE WISE***

An Advertisement in this Directory lasts one year,  
and it is worth as much the last day as on the first, for  
it is the place people can be sure to find out something  
about your business.

---

**Please mention this Directory when dealing with Advertisers**

---

**TICE & GATES***OUR SELECTIONS OF***CHINA, GLASS AND SILVER**

ARE UNSURPASSED IN ROCHESTER

We will be pleased to advise you regarding a Gift for  
your Every Requirement

*PHONE STONE 646*

347-349 EAST AVENUE .. ROCHESTER, N. Y.

*Rug Cleaners***STAUB & SON, Inc.***Cleaners — Launderers — Dyers — Furriers*

A Complete Fabric Maintenance Service

**COLD STORAGE VAULTS**

Furniture

Clothing

Drapes

Rugs

951 E. MAIN ST., *MONROE 6600* ROCHESTER, N. Y.

**PIETERS DRY CLEANING***"Quality Plus Dependability"***ODORLESS DRY CLEANING**

Wearing Apparel Dry Cleaned, Pressed, Repaired,  
Refinished, Missing Buttons Replaced, Lint and  
Dirt Removed From Pockets. *Fine Tailoring.*

65 W. MAIN STREET - Phone WEBSTER 70

The cost of Reference Advertising  
of the above type is more than  
offset by its results.

**Coal, Coke and Oil****IRONDEQUOIT COAL & SUPPLY CO.***Glenwood 6161***FAMOUS READING ANTHRACITE***That Better Hard Coal***R G & E Coke****149 RIDGE ROAD, EAST****ROCHESTER, N. Y.****L A N G I E****FUEL SERVICE, INC.****HI-HEAT COAL - SEMET-SOLVAY COKE****ALADDIN FUEL OILS—They Cost No More****CHRYSLER OIL BURNERS - STOKOL COAL STOKERS**  
**CHRYSLER AIRTEMP AIR CONDITIONING****Main Office, 326 Main Street, East****4680 Lake Ave. 693 South Ave. 357 St. Paul St. 2 Lake Ave.****PHONE STONE 4000****GRACE D. ROSS**  
Pres. and Secy**E. REED SHUTT**  
Vice President**V. H. RUSSELL**  
Treas. and Mgr.**CHAS. C. WEST COAL CO., Inc.***Lehigh Valley Anthracite Coal***COKE and OIL****Main Office & Trestle, 281-285 NORTH UNION STREET****CULVER 999—2074***Anthracite* **COAL** *Bituminous**R. G. & E.* **COKE** *All Sizes***FUEL OIL****"OVER FIFTY YEARS IN BUSINESS"****Our Heating Expert Is At Your Service.****JENKINS & MACY CO.****General Offices:**  
**100 Cutler Building**  
**42 East Avenue****Telephone**  
**STONE 416****Offices and Yards:**  
**1045 Main St. East**  
**119 Child Street**  
**381 Main St. West**

**Coal, Coke and Oil**

51

**ONTARIO COAL CO.***That**Better**Hard**Coal*

FUEL OIL — SOFT COAL — COKE

ROCHESTER, N. Y.

*Main 2230*

SEA BREEZE, N. Y.

*Culver 340*

WE DELIVER IN WEBSTER

**RUSSEL B. MASON CO.****HEATING OILS**

FARM and MASON SUPPLIES

COAL and COKE

**FRUIT and PRODUCE**

Phones Webster 291 — 292

205 NORTH AVENUE

-

-

WEBSTER, N. Y.

***This Buyers' Guide Contains***

the advertisements and business references  
of the more progressive business men and  
firms in the city, classified according to  
lines of business.

***Consult it for your Needs!***

## **WM. SUMMERHAYS SONS**

CORPORATION

Boiler Settings, Fire Masonry, Special Furnaces, Power Plant Chimneys  
of Radial and Common Brick.      -      -      Lightning Arrestors Installed.

### **SUMMERHAYS REFRACTORY SUPPLIES**

INCORPORATED

Fire Brick, Carborundum Brick, Insulating Brick, Plastic Fire Brick, High  
Temperature Cements, Fire Clay, Asbestos.

Office and Yard, 614-632 CLINTON AVE., SOUTH

*Phone Monroe 1155*

---

## **“SEALTEST”**

**PRODUCTS**

## **BRIGHTON PLACE DAIRY**

**45 FULTON AVENUE**

**Glenwood 144**

A Store of Separate, Segregated Shops, Specializing  
in Every Phase of Fashionable Feminine Apparel and  
Accessories, and in the Various Aids to Charm.

## **B. FORMAN CO.**

Clinton Avenue South      -      -      Cortland Street

Telephone MAIN 3900

---

# **McCURDY'S**

*Rochester's Foremost*

**Quality Department Store**

**MAIN and ELM STREETS**

**Phone MAIN 5500**

---

---

**LAUBE ELECTRIC CORPORATION*****Electrical Contractors - Heating Equipment***

TIMKEN SILENT AUTOMATIC OIL BURNERS

S. T. JOHNSON INDUSTRIAL OIL BURNERS

For Installation and Service Call STONE 104

If not answered Call MONROE 2482

191-193 EAST AVENUE - - ROCHESTER, N. Y.

---

**T. H. GREEN ELECTRIC CO.**  
INCORPORATED***Contractors and Manufacturers***

Panels and Switchboards

Automatic Telephones

General Electric Motors

***Motor and Apparatus Repairs***

31-37 N. WATER STREET - - ROCHESTER, N. Y.

Telephones MAIN 555-556

---

**PETER TEMPERATO*****Electric Refrigerators***

Westinghouse, Gruno, General Electric, Hotpoint, Stewart-Warner, Apex

***Radios***

Zenith, Gruno, Motorola, General Electric Westinghouse

***Washing Machines***

Apex, General Electric, Westinghouse, Thor, Easy Washer

ELECTRIC STOVES and GAS RANGES

*Complete Service Department**Full Line of Appliances and Equipment*

114 W. COMMERCIAL ST.

PHONE  
15-J

EAST ROCHESTER

**FLORISTS**

28 CLINTON AVENUE NORTH ROCHESTER, N. Y.

Phones Stone, 484-485-486

## ***Funeral Directors***

---

Office Phone  
STONE 1179

Residence Phones  
MONROE 2111, 2887-W and 8242

### **BENDER BROTHERS**

#### ***Funeral Directors***

301 ALEXANDER STREET - ROCHESTER, N. Y.

---

### **L. W. MAIER'S SONS**

ESTABLISHED 1872

#### ***FUNERAL DIRECTORS***

Telephone STONE 609

870 CLINTON AVENUE, NORTH  
ROCHESTER, N. Y.

---

### **C. F. SCHEUERMAN SONS**

#### ***Funeral Home***

The Display at our Funeral Home shows the complete  
Funeral Service in Plain Figures.

230 BROWN STREET

*Phones Genesee 438-5411*

---

### **JOHN R. HANNA**

#### ***Funeral Home***

1826 RIDGE ROAD EAST

Culver 328

TELEPHONES

Res. Culver 4789-J

---

*Formerly the Hanna & Coyne Funeral Home*  
575 Main Street West  
Rochester, N. Y.

---

**Please mention this Directory when dealing with Advertisers**

EDWARD E. HAUBNER

SARTO W. STALLKNECHT

---

---

**HAUBNER & STALLKNECHT**

*Funeral Directors and  
Embalmers*

828 JAY STREET      Genesee 300      ROCHESTER, N. Y.

---

ANDREW J. MATTLE

JOHN W. MATTLE

**A. J. MATTLE & SON**

*Funeral Directors*

Phone STONE 1552

300 CUMBERLAND STREET      ROCHESTER, N. Y.

---

*The Advertisement that Lives and Works*

**FOR ONE YEAR**

Your advertisement here reaches the prospective customer at the time he is looking for your special product.

A letter from you will bring more information as to the value.

**SAMPSON & MURDOCK CO., INC.**

*Publishers of Directories Since 1846*

179 LINCOLN STREET      -      -      BOSTON, MASS.

---

---



**FURNITURE**

You'll love to live with

**AT PRICES**

You can afford to pay



Furniture	Rugs
Linoleum	China
Lamps	Stoves
Curtains	Draperies
House Furnishings	Toys
Stromberg-Carlson, R. C. A. and Auto Radios	

*"Always it pays to trade at  
GRAVES"*

**H. B. GRAVES CO., Inc. 78 STATE ST.**

**PRENS CARTING & STORAGE***FINE QUALITY*

**New and Storage Household Furniture  
RUGS, STOVES, RADIOS, WASHERS,  
REFRIGERATORS**

**EVERYTHING FOR THE HOME**

Latest style furniture of modernistic design for cottage  
and mansion.

Visit our salesroom and find bargains that cannot be  
equalled.

A saving on every purchase guaranteed.

**WE BUY, SELL, TRADE ANTIQUE FURNITURE**

**434-460 STATE ST. Telephone Main 731**



**OPEN 'TIL 9 P. M.**

**FREE PARKING**

Your City Directory is one of the ***Surest***  
ways of directing the demand for the  
goods or service you want to sell.

# Howe & Rogers

## Quality Home Furnishings Since 1857

RUGS - FURNITURE - DRAPES - LAMPS - RADIO  
LINOLEUM - STOVES - WASHERS - ELECTRIC  
REFRIGERATORS - VACUUM CLEANERS

### CONVENIENT BUDGET TERMS

**89 Clinton Ave. So.      Rochester, N. Y.**

Original Members of MENG & SHAFER		
WILLIAM F. SHAFER	<b>FASHION IN FURS</b>	S. GEORGE SHAFER
FRIGID FUR STORAGE	<b>SHAFFER CO.</b> 27-29 GIBBS STREET	RE-STYLING REPAIRING RELINING
	<i>Manufacturing Furriers</i>	
	FUR COATS — FUR SCARFS	
	<i>also</i>	
STONE 18	FURS FASHIONED TO MEASURE	Rochester N. Y.

## TEMPLE FUR STORE, Inc.

***Furriers - Repairing - Re-Styling - Storage***  
***By Practical Furriers***

Your Assurance of Satisfaction.  
Storage  $2\frac{1}{2}\%$  of Your Valuation in Fireproof Vaults

Telephone MAIN 5731

**52 NORTH STREET      -      ROCHESTER, N. Y.**

## *Home Appliances*

---



GARDEN TRACTORS      POWER LAWN MOWERS      HOME WATER SYSTEMS  
 ELECTROL      OIL BURNERS      —      AIR CONDITIONING  
 REFRIGERATION      GAS — KEROSENE — ELECTRIC  
*Expert Mechanics for Installation and Service*  
 PUMPS FOR ALL PURPOSES  
 546 E. MAIN ST.      Call Main 3380      ROCHESTER

---

## *A Buyer Wants Information*

Does your copy tell him more than he already knew when he turned to the page bearing your advertisement? Purchasing agents often tell us they find a concern specializing on just what they are looking for by turning to these descriptive spaces, but that in many cases insufficient information is given.

Whatever helps the buyer to find what he wants means business for the seller. Anyone referring to a directory advertisement does so because he is already **interested**. Therefore space need not be used to attract **attention** or **create desire**.

Treat the reader as you would a person coming direct to you, inquiring about your service or product with the idea of doing business. Don't let your prospect turn away from your ad without finding out why you are equipped to serve him.

***Be Specific***

**Insurance (General)**

59

AUSTIN F. GRAB, *President*ROBERT F. WOERNER, *Vice President*LEONARD H. HENDERSON, *Vice-President*ROY A. DUFFUS, *Secretary*PHILIP C. GOODWIN, *Treasurer**Established 1880***JAMES JOHNSTON AGENCY**

INCORPORATED

NO. 204 GRANITE BUILDING

*Telephone Main 697***INSURANCE***Companies Represented*Home Insurance Company of New York  
City of New York Insurance CompanyEagle Indemnity Company  
American Surety Company*Agency Representatives*

WILLIAM R. ORWEN

JOHN A. PARK

ARTHUR L. WELSH

**HOWARD C. DANA & CO.***Fire, Casualty, Surety, Marine  
Insurance*

410-416 GRANITE BLDG.

ROCHESTER, N. Y.

Phones Stone 691—692

ERNEST A. PAVIOUR, Pres.

JAMES H. FARRELL, Treas.

**R. S. PAVIOUR & SON, Inc.**

OFFICE 68 YEARS OLD—ESTABLISHED 1870

**COMPANIES REPRESENTED**

Phoenix Insurance Company of Hartford, Conn.

United States Casualty Company of New York

PHONE MAIN 220

1239 LINCOLN-ALLIANCE BANK BLDG., ROCHESTER

# Insurance (General)

JAMES C. CLEMENTS

1896 — 1938

H. EVEREST CLEMENTS

**JAMES C. CLEMENTS, INC.**

*Insurance*

409 POWERS BUILDING

MAIN 219

## Company Representation

Globe Indemnity Company

Federal Insurance Company

The Liverpool and London and Globe Insurance Company, Ltd.

261  
MAIN

**HARRY J. McKAY**

261  
MAIN

Member of the Underwriters Board of Rochester, N. Y., Inc.

National Association of Insurance Agents

We do not sell Mutual or Cut-Rate Insurance

## GENERAL INSURANCE SERVICE

Representing Companies with a Century's Record for  
Service and Satisfactory Settlements

409-413 Central Trust Bldg. - 25 East Main Street

FREDERICK MUTSCHLER, *Representative*

AGENCY ESTABLISHED 1903

**GEORGE A. SLOCUM AGENCY**

INCORPORATED

## General Insurance

Fire	Bonds	Health	Burglary	Wind Storm	Parcel Post
Rents	Accident	Check Forgery	Compensation	Automobile	Plate Glass

FAIRPORT, NEW YORK

TELEPHONE 286

**WM. H. WITMER**

## General Insurance

We Write ALL Forms of INSURANCE

TELEPHONE WEBSTER 84

3 MAIN STREET E.

WEBSTER, N. Y.

Please mention this Directory when dealing with Advertisers

**GEO. H. WILSON*****Fire and Auto Insurance***

Our companies have been paying from 15% to 25% Dividends over 25 years

PHONE FAIRPORT 237-W

Herald-Mail Building, 36 WEST AV., FAIRPORT, N. Y.

ROMAN WOLFERT

ESTABLISHED 37 YEARS

**WOLFERT BROTHERS**

Marie M. Wolfert

Leo F. Rombaut

Anna T. Wolfert

Associates

***General Insurance***

TRIANGLE BUILDING

MAIN ST. E. and EAST AVE. - ROCHESTER, N. Y.

*Phones MAIN 478 and MAIN 479*

FIRE AUTOMOBILE COMPENSATION LIFE ACCIDENT, ETC.

**CLARENCE A. VICK*****General Insurance***

INSURE IN DIVIDEND-PAYING COMPANIES

*20% Savings Annually Past 12 Years*

146-147 CUTLER BLDG. TELEPHONE ROCHESTER, N. Y.  
STONE 3180

**LUCAS & DAKE CO.**

MAIN 938

INC.

MAIN 939

***General Agents***

ÆTNA LIFE INSURANCE COMPANY, HARTFORD, CONN.

*(Accident and Liability Department)*

ÆTNA CASUALTY & SURETY COMPANY, HARTFORD, CONN.

AUTOMOBILE INSURANCE COMPANY, HARTFORD, CONN.

**I N S U R A N C E**

LINCOLN-ALLIANCE BANK BLDG.—31 EXCHANGE ST., RM. 201

**62 Insurance and Real Estate Jewelers**

DAVID GOLDMAN, President

ESTABLISHED 1914

**DAVID GOLDMAN CO., Inc.**

*Insurance and Real Estate*

STORE LEASING

We are Members of National, State and Local Associations

MAIN 2984 6 STATE ST., ELWOOD BUILDING

*We Write All Forms of Insurance and Bonds*

**A. L. GOODELL**

**REAL ESTATE**

**INSURANCE**

Satisfaction to Buyer and Seller

Protection for Every Need

59 W. MAIN STREET - WEBSTER, N. Y.

*Phone Webster 15*

**REAL ESTATE**

SUBURBAN HOMES

FARMS

*Specializing in Webster and Penfield Property*

MEMBER REAL ESTATE BOARD OF ROCHESTER

*General Insurance*

**HAROLD K. FOLEY**

*Office*

7 EAST MAIN ST.

Phone Webster 66

**WEBSTER**

**N. Y.**

*Residence*

74 NORTH AVE.

Phone Webster 64

**—E. J. SCHEER, INC.—**

*Rochester's Finest Jewelry Store*

Diamonds  
Mountings  
Jewelry  
Silverware  
Clocks  
Rock Crystal

"SCHEERTON" MOUNTINGS

Visit Our Beautiful Silver Dept.

WATCHES  
Movado  
Hamilton  
Tavannes  
E. J. Scheer  
Elgin

EXPERT WATCH AND JEWELRY SERVICE

259 MAIN ST. E. opp. Sibley's

Phone Stone 710

Please mention this Directory when dealing with Advertisers



C. C. MORSE, President  
 WHITING B. MORSE, Vice-Pres-Treas.      FREDERICK G. MORSE, Vice-Pres.  
 JOHN P. MORSE, Secretary

# **WM. B. MORSE LUMBER CO.**

WHOLESALE AND RETAIL

*Hardwood and Softwood Lumber*

*Sash, Doors and Trim*

*All Types of Insulation and Accoustical Materials*

*Gypsum and Fibre Boards*

*Morsetile and Genuine Presdwood*

We carry a full line of

**Bay State Paints, Enamels and Varnishes**

## **BRANCHES**

OTIS LUMBER CO.  
 936 East Main St.

WM. B. MORSE & SONS  
 340 Main St. West

NORTH END BRANCH  
 Thomas Ave. near Stutson St. Bridge

MORSE SASH AND DOOR CO.  
 S. Ford St. cor. Waverly Place

Main Office, 340 Main St., West

ROCHESTER, N. Y.

# **HERRICK LUMBER CO., INC.**

Successors to COMSTOCK LUMBER CO., Inc.

## **..LUMBER..**

1030 MAIN STREET, EAST - ROCHESTER, N. Y.

*Phones CULVER 1416-1417*

# **GEORGIAN BAY LUMBER CO., Inc.**

WHOLESALE AND RETAIL

Lumber - Certigrade Shingles - Sash

Fine Interior Trim - Asphalt Roofing - Wall Board

Plaster Board - Celotex - Presdwood - Plywood

PHONES CULVER 1400-1401

181 HUMBOLDT STREET, ROCHESTER, N. Y.

N. TONAWANDA

PENN YAN

GENEVA

***Multigraphing*****FOR**

Addressing

Mimeographing

Multigraphing

Mailing

Lists

Sales Letters

Mail Advertising Service

Printing

**AYER & STREB  
ART PRINT SHOP****77 ST. PAUL ST., ROCHESTER .. Call Main 6199 or Stone 567*****Modern Conveniences***

Lost, sometimes, amid the more spectacular conveniences, such as the auto, telephone, radio, or aircraft, yet the

***CITY DIRECTORY***

is probably the greatest convenience of this or any other age. Ponder, for a few moments, on the service rendered by the city directory. It would not be stretching matters to say that it can accurately answer a million questions about the municipality it represents. Familiarize yourself with this truly wonderful book. Learn how to use it to the greatest advantage. Study the index and miscellaneous information section for a few moments. The gold mine of local facts and information will surprise you. You will learn things about your own city that you never knew before.

**SAMPSON & MURDOCK CO., Inc.***Directory Publishers***179 LINCOLN STREET - BOSTON, MASS.**

**Democrat**  **Chronicle.**

**ROCHESTER'S  
LARGEST AND  
MOST POWERFUL**

*Daily and Sunday  
Newspaper*

1833

1938

**Democrat**  **Chronicle.**

**Your  
Best  
Bet**

*In Rochester, Nearly  
every family reads  
**THE TIMES UNION***

No Campaign is Complete un-  
less you include Rochester's  
only Evening Newspaper.

**ROCHESTER TIMES-UNION**

**ROCHESTER'S GERMAN DAILY**  
**ABENDPOST**

is an evening daily newspaper delivered directly into the homes in all sections of the city and suburbs. It is a

**HOME NEWSPAPER**

carefully read by the large German population of Rochester and surrounding towns.

Abendpost Building, 237-239 Andrews St.      Stone 278

***Business News You Cannot Get Elsewhere***

Published every day in

**The Daily Record**

(Established 1908)

Credit—Court—Building—Insurance

Automotive—General Business News

**DAILY RECORD COMPANY, INC.**

29 North Water St. — Phone Stone 2025

**LET US PRINT**

Your Stationery and Business Forms.

Good Work—Rightly Priced

**EAST ROCHESTER HERALD**

150 WEST COMMERCIAL ST., EAST ROCHESTER, N. Y.

**Backed by**

**4 DIMENSIONS**

*... your advertising message*

*is more effective in the*

- AUSPICES
- CHARACTER
- INFLUENCE
- CIRCULATION

**Catholic  Courier**

*Newspaper of the Rochester Diocese*

50 CHESTNUT ST. ● STONE 1136-37 ● ROCHESTER, N. Y.

# **BROWN BROTHERS COMPANY**

## **CONTINENTAL NURSERIES**

Established 1885

*Growers of a Complete Line of Dependable Nursery  
Stock for the World Out of Doors*

RETAIL — LANDSCAPE SERVICE — WHOLESALE

Retail Offices and Landscape Dept., 891 Garson Avenue

Phone Culver 785

Packing Cellars, 760 Merchants Road

Phone Culver 5

Penfield Farms, Atlantic Ave. & Scribner Road

Culver 5224-J

# **Chase Brothers Company**

*“Rochester’s Pioneer Nurserymen”*

Growers of a Complete Line of Trees, Shrubs, Roses, Hardy Plants, Etc.

*Big Shade Trees—20 to 30 Feet High*

Expert Landscape Service

Retail Stores, 2045 EAST AVENUE - Telephone MONROE 1166

Landscape Dept., 2045 EAST AVE. - Telephone MONROE 1168

# **GAMROD-HARMAN CO., Inc.**

WHOLESALE AND RETAIL

*Paint - Glass - Brushes - Varnishes and Wallpaper*

Distributors for McDOUGALL-BUTLER PAINTS

IMPERIAL “WASHABLE” WALLPAPERS

and ARVON PLASTIC PAINT

75 EXCHANGE STREET - ROCHESTER, N. Y.

Phones MAIN 3710—3711

# **F. P. VAN HOESEN CO., Inc.**

*PAINTS - WALL PAPER - WINDOW SHADES  
VENETIAN BLINDS*

Phone STONE 473

41 ST. PAUL ST., Cor. Mortimer St., ROCHESTER, N. Y.

W. C. REMINGTON

ESTABLISHED 1854

R. J. FOWLER

**BARNARD, PORTER & REMINGTON***Wholesale and Retail Dealers in***PAINTS, OILS, GLASS,  
BRUSHES, VARNISHES****ARTISTS' MATERIALS      DRAWING SUPPLIES  
PAINT SPRAY APPARATUS***Distributors for LOWE BROS. High Standard Paints***There is a LOWE BROS. DEALER in your town****9, 11, 13 NORTH WATER ST. Phones MAIN 8140—8141  
8142 ROCHESTER, N. Y.****GEORGE I. VIAL & SON****PAINT SUPPLY HOUSE***Wholesale and Retail Dealers in***PAINT, VARNISH, GLASS AND BRUSHES****Distributors of Keystone Varnish Companies Products****MAIN 733****5-7 NORTH WATER STREET      ROCHESTER, N. Y.****THE SHERWIN-WILLIAMS Co.****The Cover-the-Earth Trade-  
Mark is the World's Greatest  
Guarantee of Paint Quality.****Imperial Washable  
Wallpapers—****FREE PARKING***Shades and Venetian Blinds***MAIN 1517****53 STATE STREET      -      -      -      ROCHESTER, N. Y.****J. R. GRAY****Contractor****Plumbing      -      Heating      -      Sheet Metal  
Air Conditioning****PHONE 361****711 MADISON STREET      EAST ROCHESTER, N. Y.**

**LIST OF OUR PUBLICATIONS****PRICES UPON APPLICATION****Massachusetts**

Attleboro and N. Attleboro  
 Boston  
 Boston Blue Book  
 Fall River  
 Gloucester and Rockport†  
 Lawrence  
 Lowell  
 Lynn  
 Malden\*  
 Newburyport and Amesbury†  
 Newton†  
 Taunton  
 Waltham†  
 Worcester  
 Worcester House

**New Hampshire**

Manchester

**New York**

Albany and Rensselaer  
 Auburn  
 Oswego\*  
 Rochester  
 Rochester Suburban  
 Syracuse  
 Troy, Cohoes, Waterford, Watervliet  
 and Green Island

**Rhode Island**

Cranston\*  
 East Providence†  
 Jamestown and New Shoreham†  
 Newport  
 Pawtucket  
 Providence  
 Westerly\*  
 Woonsocket

\*Denotes books issued in odd years.

†Denotes books issued in even years.

All books with the exception of the Boston Blue Book  
 Jamestown and Worcester give Property Owners.

All books with the exception of the Boston Blue Book,  
 and Worcester House Directory give Wives' Names.

*Latest Directories of all Cities for Sale at publishers' prices*

**SAMPSON & MURDOCK CO., Inc.****179 LINCOLN STREET****..****BOSTON, MASS.**



# GLENN ROSENBAUER

**Beacon Feeds — Baby Chicks**  
**Poultry Supplies**

Business Phone Webster 29-W — Res. Phone Webster 128-F-11

36 COMMERCIAL STREET - WEBSTER, N. Y.



## ARPEAKO

Hams - Bacon - Daisies  
 Fresh Pork

51 SAUSAGE PRODUCTS

**ROCHESTER**  
**PACKING CO., Inc.**

900 MAPLE ST. Phone Genesee 5200 ROCHESTER, N. Y.

RENTALS

Phone STONE 2904

SALES

## HERBERT J. BIETRY

**Realtor**

1216 LINCOLN-ALLIANCE BANK BLDG., ROCHESTER, N. Y.

*Expert Service, Rent Collections and Property Management*

Leases  
 Home Building  
 Residential  
 Sales



Mortgage Money  
 Appraisals  
 Management of  
 Property

**INSURANCE - INDUSTRIAL SITES**

1014 Lincoln Alliance Bank Building Phone STONE 633  
 EVENINGS AND SUNDAYS CHAR. 334

**NORBERT STREB CO.***Realtors***..REAL ESTATE..**Bought - Developed - Financed - Managed  
Rented - Sold**223 POWERS BUILDING - - Main 4579****ROCHESTER REAL ESTATE HEADQUARTERS****"REALTY HOUSE"**

Sales, Rentals, Property Management and First Mortgage Bonds

**MAIN  
250****C. E. McINTOSH CORP.****MAIN  
251**

For your convenience now located on the ground floor

**Monroe Building, 23 EXCHANGE ST., Rochester, N. Y.****HALL REALTY CO.****REALTORS**

27 Years of Continuous Active Service

WM. G. HALL, President

**Rentals**

Alex Hall

**Insurance and Investments**

Jas. R. Hall

**Sales**

Geo. N. Hall

**204 POWERS BLDG. - - Main 257****HARRY M. KING***Realtor***PROPERTY MANAGEMENT*****Sales and Rentals***

Phone MAIN 3162

**1331 LINCOLN-ALLIANCE BANK BUILDING**

72—80

**Schools****Steel and Iron****Storage**

# THE SCHOOL OF COMMERCE

362 EAST AVENUE, ROCHESTER

ADVANCED COURSES IN  
BUSINESS EDUCATION

Special Medical Secretarial Courses

All Two Year Courses Registered with the Department of  
Education of the State of New York*Ask For Information**Call MAIN 5530 or 5531*

## F. L. HEUGHES & CO., Inc.

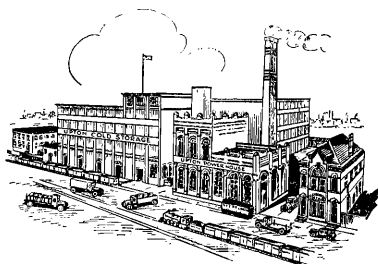
*Members of The American Institute of Steel Construction*

ENGINEERS, DESIGNERS AND FABRICATORS OF

*Structural Steel and Iron Work for Buildings, Bridges, Etc.  
Electric Welded Steel Tanks, Stacks, Vats and Kettles*All Structural Shapes and Reinforcing Bars Carried in Stock  
Phone or Write for Catalog      Complete Warehouse Stock

Office and Works

1029 LYELL AVENUE

*Phones Glenwood 590-591*

Established 1902

## The Upton Cold Storage Co. INC.

Cooler and Sharp Freezer Service  
For All Food Products

Fire Proof Buildings      Lowest Insurance

*Storage in Transit*

Route All Cars

N. Y. C. Lines, State St. Delivery  
38 Cliff St., Rochester, N. Y.*MAIN 1494*

## How to Make This Book Serve You!

The City Directory may be used to great advantage in supplementing and rounding out your newspaper publicity. Put—"We are listed in the directory" in your copy. Tie up all your advertising to the directory with the above phrase. Then see to it that you are properly represented under all the business listings applicable to your business. The phrase will stick long after the newspaper has been mislaid and people will get in the habit of looking for your name when ready to purchase goods which you carry. Thus will the interest aroused by your newspaper display be extended and preserved for your future benefit.

---

Please mention this Directory when dealing with Advertisers