

**LINCOLN ALLIANCE BANK
AND
TRUST COMPANY**

Seven Convenient Offices

MAIN OFFICE, 183 MAIN, E. at Stone St.
LINCOLN OFFICE, 33 EXCHANGE ST.
LAKE AVE. OFFICE, LAKE AVE. cor. Ridgeway Ave.
WEST END OFFICE, 836 MAIN, W. at Genesee St.
EAST END OFFICE, 504-506 N. GOODMAN ST.
MONROE AVE. OFFICE, 560 MONROE AVE.
PORTLAND AVE. cor. Clifford Office

**EGBERT F. ASHLEY CO.
INSURANCE**

212 UNION TRUST BUILDING

Telephone Main 444

**GARFIELD
REAL ESTATE CO
12 EXCHANGE ST-WILDER BLDG**

INCORPORATED

REALTORS

MAIN 270

A

LELAND · WESTON · LOWE · CO.

BUSINESS · ESTABLISHED · IN · 1831

MANUFACTURERS · OF · DISTINCTIVE · DESIGNS
PRELIMINARY · SKETCHES · AND · ESTIMATES
FURNISHED · FREE · OF · COST



MONUMENTS

GARDEN
FURNITURE

BAPTISMAL FONTS
SUN DIALS

MAUSOLEUMS

Central Library of Rochester and
Monroe County
Local History & Genealogy Division
115 South Avenue
Rochester, New York 14604

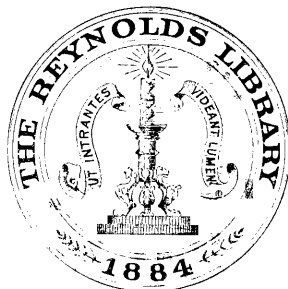
Take

and

1132-1

N. Y.

INC



ORS

**Reference Book
Not for Circulation**



NO

RE



Current Balance Sheet and Earning Statement
and *List of Holdings* Mailed Upon Request.

CHARLES E. MUDGE

Investment Securities

42 EAST AVENUE .. ROCHESTER, N. Y.



3 9077 04695 3827

LIST OF OUR PUBLICATIONS

Albany.....	\$10.00
Attleboro†.....	8.00
Auburn.....	8.00
Boston.....	25.00
Boston Blue.....	5.00
Boston Business By Streets.....	10.00
Cranston*.....	8.00
Danielson*.....	5.00
East Providence†.....	8.00
Fall River.....	8.00
Gloucester†.....	6.00
Hopkinton*.....	5.00
Jamestown and New Shoreham†.....	4.00
Lakeville†.....	4.00
Lawrence.....	8.00
Lowell.....	8.00
Lynn.....	8.00
Malden*.....	8.00
Manchester.....	8.00
Mass. Mfrs*.....	15.00
Mystic, Stonington and Noank†.....	5.00
Newburyport†.....	6.00
New England†.....	15.00
Newport.....	8.00
Newton*.....	8.00
Oswego†.....	8.00
Pawtucket.....	9.00
Providence.....	10.00
Providence House*.....	8.00
Rochester.....	12.00
Rochester Suburban.....	7.00
Syracuse.....	10.00
Taunton.....	8.00
Troy.....	10.00
Waltham†.....	8.00
Westerly*.....	7.00
Woonsocket.....	8.00
Worcester.....	10.00
Worcester House†.....	10.00

*Denotes books issued in odd years

†Denotes books issued in even years

Prices subject to change without notice

SAMPSON & MURDOCK CO.

377 BROADWAY

BOSTON, MASS.

*Latest Directories of all Cities for Sale at publishers' prices
at our Direct Mail Division*

This Publication Is The Product of a Member of



—thus assuring you the ultimate service that skill and care can produce in the way of City Directories or other reference media, and providing protection against fraudulent advertising schemes which operate under the name of Directories.

The following "Standards of Practice," adopted at the inception of the Association of North American Directory Publishers in 1898, and strictly adhered to over the years, is your guarantee of satisfactory Directory Service.

The publisher of a Directory should dedicate his best efforts to the cause of business uplift and social service, and to this end pledges himself:

1. To consider, first, the interest of the user of the book.

2. To subscribe to and work for truth, honesty and accuracy in all departments.

3. To avoid confusing duplication of listings, endeavoring to classify every concern under the one heading that best describes it, and to treat additional listings as advertising, to be charged for at regular rates.

4. To increase public knowledge of what Directories contain; to study public needs and make Directories to supply them; to revise and standardize methods and classifications, so that what is wanted may be most easily found, and the Directory be made to serve its fullest use

as a business and social reference book and director of buyer and seller.

5. To decline any advertisement which has a tendency to mislead or which does not conform to business integrity.

6. To solicit subscriptions and advertising solely upon the merits of the publications.

7. To avoid misrepresentation by statement or inference regarding circulation, placing the test of reference publicity upon its accessibility to seekers, rather than on the number of copies sold.

8. To co-operate with approved organization and individuals engaged in creative advertising work.

9. To avoid unfair competition.

10. To determine what is the highest and largest function of Directories in public service, and then to strive in every legitimate way to promote that function.

\$100 Reward will be paid by the Association of North American Directory Publishers for the arrest and conviction of any person or persons engaged in the publishing, collecting or canvassing for any fraudulent or fake directories.

Association of North American Directory Publishers

524-528 Broadway

New York City

Rochester Suburban // Directory

For the year 1930

INCLUDING THE TOWNS OF
BRIGHTON, GATES, GREECE and IRONDEQUOIT

A Supplement to the Rochester Directory

Containing

Alphabetical Section (White Pages) for each town, giving names, occupations and addresses of all persons over twenty years of age, business and post office addresses.

Business Directory (Page 629) of all firms or individuals in business or profession, under listing best describing their service or product.

Reference Department (Page 17) where more information than is possible to give under the headings is placed on file for buyer's reference. The value of this department cannot be estimated. It is an index of the best business interests of the town, and stands for them and the town in reference libraries all over the country, as well as on the desks of progressive business men. It is accessible to everybody, and the logical place to look for specific information. This probably explains why no other form of publicity is so generally endorsed by business men, as a glance at this department will show.

House and Street Directory. (Blue Sections) A complete list of streets, giving numbers at intersections and enabling one to tell at once between what streets a given number lies, and the quickest way to get there. All business houses, individuals in business, and householders are listed in numerical order upon their respective streets. Post office address is given for each street. A feature of great value and convenience.

(For detailed index to contents see page 4)



Price \$8.00

SAMPSON & MURDOCK CO., Inc., Publishers

Established 1846

730 Powers Building, Rochester, N. Y.

Printed in U. S. A.

COPYRIGHT 1930 BY SAMPSON & MURDOCK CO. INC.

CALENDAR 1930

JANUARY

Su	Mo	Tu	We	Th	Fr	Sa
			1	2	3	4
5	6	7	8	9	10	11
12	13	14	15	16	17	18
19	20	21	22	23	24	25
26	27	28	29	30	31	

FEBRUARY

Su	Mo	Tu	We	Th	Fr	Sa
						1
2	3	4	5	6	7	8
9	10	11	12	13	14	15
16	17	18	19	20	21	22
23	24	25	26	27	28	

MARCH

Su	Mo	Tu	We	Th	Fr	Sa
						1
2	3	4	5	6	7	8
9	10	11	12	13	14	15
16	17	18	19	20	21	22
23	24	25	26	27	28	29
30	31					

APRIL

Su	Mo	Tu	We	Th	Fr	Sa
			1	2	3	4
5	6	7	8	9	10	11
12	13	14	15	16	17	18
19	20	21	22	23	24	25
26	27	28	29	30		

MAY

Su	Mo	Tu	We	Th	Fr	Sa
					1	2
3	4	5	6	7	8	9
10	11	12	13	14	15	16
17	18	19	20	21	22	23
24	25	26	27	28	29	30
31						

JUNE

Su	Mo	Tu	We	Th	Fr	Sa
1	2	3	4	5	6	7
8	9	10	11	12	13	14
15	16	17	18	19	20	21
22	23	24	25	26	27	28
29	30					

JULY

Su	Mo	Tu	We	Th	Fr	Sa
		1	2	3	4	5
6	7	8	9	10	11	12
13	14	15	16	17	18	19
20	21	22	23	24	25	26
27	28	29	30	31		

AUGUST

Su	Mo	Tu	We	Th	Fr	Sa
						1
2	3	4	5	6	7	8
9	10	11	12	13	14	15
16	17	18	19	20	21	22
23	24	25	26	27	28	29
30	31					

SEPTEMBER

Su	Mo	Tu	We	Th	Fr	Sa
	1	2	3	4	5	6
7	8	9	10	11	12	13
14	15	16	17	18	19	20
21	22	23	24	25	26	27
28	29	30				

OCTOBER

Su	Mo	Tu	We	Th	Fr	Sa
			1	2	3	4
5	6	7	8	9	10	11
12	13	14	15	16	17	18
19	20	21	22	23	24	25
26	27	28	29	30	31	

NOVEMBER

Su	Mo	Tu	We	Th	Fr	Sa
						1
2	3	4	5	6	7	8
9	10	11	12	13	14	15
16	17	18	19	20	21	22
23	24	25	26	27	28	29
30						

DECEMBER

Su	Mo	Tu	We	Th	Fr	Sa
	1	2	3	4	5	6
7	8	9	10	11	12	13
14	15	16	17	18	19	20
21	22	23	24	25	26	27
28	29	30	31			

CALENDAR 1931

JANUARY

Su	Mo	Tu	We	Th	Fr	Sa
				1	2	3
4	5	6	7	8	9	10
11	12	13	14	15	16	17
18	19	20	21	22	23	24
25	26	27	28	29	30	31

FEBRUARY

Su	Mo	Tu	We	Th	Fr	Sa
						1
2	3	4	5	6	7	8
9	10	11	12	13	14	15
16	17	18	19	20	21	22
23	24	25	26	27	28	

MARCH

Su	Mo	Tu	We	Th	Fr	Sa
						1
2	3	4	5	6	7	8
9	10	11	12	13	14	15
16	17	18	19	20	21	22
23	24	25	26	27	28	29
30	31					

APRIL

Su	Mo	Tu	We	Th	Fr	Sa
			1	2	3	4
5	6	7	8	9	10	11
12	13	14	15	16	17	18
19	20	21	22	23	24	25
26	27	28	29	30		

MAY

Su	Mo	Tu	We	Th	Fr	Sa
					1	2
3	4	5	6	7	8	9
10	11	12	13	14	15	16
17	18	19	20	21	22	23
24	25	26	27	28	29	30
31						

JUNE

Su	Mo	Tu	We	Th	Fr	Sa
	1	2	3	4	5	6
7	8	9	10	11	12	13
14	15	16	17	18	19	20
21	22	23	24	25	26	27
28	29	30				

JULY

Su	Mo	Tu	We	Th	Fr	Sa
				1	2	3
4	5	6	7	8	9	10
11	12	13	14	15	16	17
18	19	20	21	22	23	24
25	26	27	28	29	30	31

AUGUST

Su	Mo	Tu	We	Th	Fr	Sa
						1
2	3	4	5	6	7	8
9	10	11	12	13	14	15
16	17	18	19	20	21	22
23	24	25	26	27	28	29
30	31					

SEPTEMBER

Su	Mo	Tu	We	Th	Fr	Sa
			1	2	3	4
5	6	7	8	9	10	11
12	13	14	15	16	17	18
19	20	21	22	23	24	25
26	27	28	29	30		

OCTOBER

Su	Mo	Tu	We	Th	Fr	Sa
						1
2	3	4	5	6	7	8
9	10	11	12	13	14	15
16	17	18	19	20	21	22
23	24	25	26	27	28	29
30	31					

NOVEMBER

Su	Mo	Tu	We	Th	Fr	Sa
						1
2	3	4	5	6	7	8
9	10	11	12	13	14	15
16	17	18	19	20	21	22
23	24	25	26	27	28	29
30						

DECEMBER

Su	Mo	Tu	We	Th	Fr	Sa
			1	2	3	4
5	6	7	8	9	10	11
12	13	14	15	16	17	18
19	20	21	22	23	24	25
26	27	28	29	30	31	

R
 2917.4788
 R676 v
 v. 1
 1930

NAMES IN THE DIRECTORY OF 1930

Number of names in Alphabetical Directory.....	Brighton	Gates	Greece	Irondequoit	Total
	3,480	1,542	4,456	7,651	17,129

PUBLISHERS' NOTE

The information in this book is gathered as far as possible by actual canvass, and is compiled in a way to ensure maximum accuracy. While the Publishers will in no way be held responsible for any errors that may occur, they will be glad to have any inaccuracies brought to their attention, so that they may be corrected in succeeding editions.

SAMPSON & MURDOCK Co., Inc., Publishers.

Reynolds Library

1- 579935

UNITED STATES COPYRIGHT LAW

IN FORCE ON AND AFTER JULY 1, 1909

SECTION 28.—That any person who wilfully and for profit shall infringe any copyright secured by this Act, or who shall knowingly and wilfully aid or abet such infringement, shall be deemed guilty of a misdemeanor, and upon conviction thereof shall be punished by imprisonment for not exceeding one year, or by a fine of not less than one hundred dollars nor more than one thousand dollars, or both, in the discretion of the court.

INDEX TO CONTENTS

	PAGE
Abbreviations.....	74
Advertising Department.....	17
Almshouse.....	15
Alphabetical Directory.....	75, 191, 251, 391
Apartment Houses.....	630
Assessors.....	189, 249, 389
Association North American Directory Publishers.....	Y
Banks.....	633
Blocks and Buildings.....	665
Brighton Directory.....	73
Business Directory.....	629
Calendar.....	2
Cemeteries.....	638
Chief of Police, Irondequoit.....	389
Churches.....	639
Clergymen.....	640
Clubs.....	641
Constables.....	73, 189, 249, 389
Coroners.....	14
County Attorney.....	14
County Court.....	15
County Officers.....	13
Deputy Sheriffs.....	14
Fire Department.....	73, 189, 249, 389
Gates Directory.....	189
Greece Directory.....	249
Halls.....	665
Hotels.....	652
House Directory.....	157, 233, 349, 565
Index to Advertisers.....	5
Irondequoit Directory.....	389
Jail.....	14
Justices.....	73, 189, 249, 389
Lawyers.....	658
Music Teachers.....	671
Newspapers.....	662
Notaries Public.....	15A
Number of Names in Directory.....	3
Nurses.....	662
Parcel Post.....	15D
Penitentiary.....	15
Physicians.....	664
Poor Department, County.....	15
Population of New York State.....	9
Population of Rochester and Monroe Co.....	15B
Post Offices.....	15B
Public Buildings.....	665
Rates of Postage.....	15B
Savings Banks.....	669
Schools.....	73, 189, 249, 389, 669
Sheriff and Deputies.....	14
Street Directory.....	157, 233, 349, 565
Supervisors.....	13, 73, 189, 249, 389
Surrogate Court.....	15A
Tax Collectors.....	189, 249, 389
Town Officers.....	73, 189, 249, 389
Trust Companies.....	673

INDEX TO ADVERTISEMENTS

	PAGE
Adler Detective Service 430 Powers bldg Rochester.....	43
Alliance Mercantile Agency 319 E & B bldg Rochester.....	top lines
Alling & Miles Inc 82 Stone Rochester.....	19
Aman Cletus M 2117 Ridge rd W, R D 5 Roch, Irondequoit.....	21
American Clay & Cement Corp 1175 Main E, Rochester.....	39
Andrews Real Estate 513 Duffy Powers bldg Rochester.....	69
Art Print Shop 77 StPaul Rochester.....	67
Ashley Egbert F Co 19 Main W, Rochester.....	front cover and 53
Ashton Funeral Home 636 Main W, Rochester.....	48
Ayer & Streb 70 Exchange rms 302-306 Rochester.....	61
Baetzel Fred 438 Exchange Rochester.....	40
Barber-Donovan Inc 285 Alexander Rochester.....	45
Barber William C 1736 Portland av Roch, Irondequoit.....	42
Bareham & McFarland Inc 366 Main E, Rochester.....	66
Barnard Development Co Inc 850 Powers bldg Rochester.....	68
Bender Bros 301 Alexander Rochester.....	48
Bickford Bros Co 340 Monroe av Rochester.....	22
Bietry Herbert J 1216 Lincoln-Alliance Bank bldg Rochester.....	69
Bliven George H 310 Powers bldg Rochester.....	72
Bohachek E S Inc Rochester Theatre bldg Clinton av S, Rochester.....	insert opp 73
Brighton Awning & Tent Co Elmwood av near Clinton av S, R D 2 Rochester Brighton.....	22
Brockmann's Edward Sons 1991 Ridge rd E, R D 5 Roch, Irondequoit.....	47
Brockport Lumber and Supply Co Inc Public Market at Railroad st Rochester...	59
Buckman's Dairy 2576 Ridge rd W, R D 6 Roch, Greece.....	top line
Burnett Printing Co 27 S Water Rochester.....	67
Burns George P Press Inc 49-51 N Water Rochester.....	67
Central Trust Co 25 Main E and 1806 East av Rochester.....	26
City Blue Print Co 66 Clinton av S, Rochester.....	37
Colby & Ament Co 499 Monroe av Rochester.....	72
Conderman Roy 520 Stone rd near Dewey av Roch, Greece.....	top line
Connors Drug Store 2197 Clinton av N Roch, Irondequoit.....	top line
Consolidated Materials Corporation 605 Terminal bldg Rochester.....	39
Credit Rating Corp The 947 Mercantile bldg Rochester.....	61
Dainard & Katsampes Inc 206 Wilder bldg Rochester.....	24
Dana Howard C & Co 410-416 Granite bldg Rochester.....	55
Dennison H B & Co 405-406 Central Trust bldg Rochester.....	23
Dispenza Charles M 508-509 Duffy-Powers bldg Rochester.....	70
East Side Savings Bank, Main E at Clinton av S, Rochester.....	33
Edelman Coal Co Inc 88 Portland av Rochester.....	41
Ells Pharmacy The 2882 Dewey av Rochester, Greece.....	top line
Empire Optical Co 35 Clinton av S, Rochester.....	64
Firman Webb Co Inc 111 Wilder bldg Rochester.....	55
Forman B Co 46 Clinton av S, Rochester.....	40
Fuller George R Co 93 Clinton av S, Rochester.....	18
Gallagher Motor Co Inc 77-87 Monroe av Rochester.....	19

	PAGE
Garfield Real Estate Co 12 Exchange Rochester.....	front cover
Garson & Wood Furniture Co 111 Clinton av S, Rochester.....	50
Garvin Chevrolet Corp 765 Main W, Rochester.....	19
General Realty Service Inc 209-218 Powers bldg Rochester.....	70
Genesee Optical Co 510 Lincoln-Alliance Bank bldg Rochester.....	64
Genesee Valley Trust Co 21 Exchange Rochester.....	28
Gilbert Appliance Corp 265-267 East av Rochester.....	44
Graeser Wm V Co 38 Clinton av N, Rochester.....	50
Graves H B Co Inc 78 State Rochester.....	49
Greece Lumber Co Inc 788 Lewiston av Rochester.....	60
Green Cab & Brokerage Co Inc 35 Court Rochester.....	21
Green's Nursery Company 1351 South av Rochester.....	64
Hatch A Gould 43 East av Rochester.....	55
Hayes, Sharp & Haggerty Inc 414 Main E, Rochester.....	56
Henner George W 28-30 S Union Rochester.....	19
Hevenor & Weller Inc 519 Burke bldg Rochester.....	46
Hibbard, Palmer & Kitchen 100 Powers bldg and 130 East av Rochester.....	24
Hickson Electric Co Inc 36 South av Rochester.....	45
Howe & Bassett Co Inc 840 University av Rochester.....	66
Howe & Rogers Co 89-91 Clinton av S, Rochester.....	49
Humphreys The Paint Man 24 South av Rochester.....	65
Ideman John G 519 Powers bldg Rochester.....	18
Ingmire & Thompson Co 137 Chestnut at Court Rochester.....	back cover
Irondequoit Coal & Supply Co 149 Ridge rd Rochester.....	41
Jeffreys L A Co 32 Chestnut Rochester.....	48
Johnston James Agency Inc 214 Granite bldg Rochester.....	54
Jordan Distributors Inc of Rochester 245-247 East av Rochester.....	20
Keller John B Sons Inc 25 Clinton av N, Rochester.....	47
Kelso Laundry Co 497 State Rochester.....	58
Kennedy-Clark Inc 22 South av Rochester.....	52
Klem Bros Dairy 3746 StPaul boul Roch, Irondequoit.....	insert opp 388
Laube Electric Corporation 338-340 Main E, Rochester.....	45
Leastman Herbert W, Elmgrove rd R D 6 Roch, Greece.....	71
Leland-Weston-Lowe Co 1132-1138 MtHope av Rochester.....	inside front cover
Lester Henry Hardware Co Inc 150 Main W, Rochester.....	51
Likly Stores Inc 271 Main E, Rochester.....	71
Lincoln-Alliance Bank & Trust Co 183 Main E, Rochester.....	front cover and 29
Long Hardware Co 4411 Culver rd Sea Breeze, Irondequoit.....	51
Loucks Fred C 110 Estall rd Roch, Greece.....	top line
Ludington H J & Co 1027-1032 Genesee Valley Trust bldg Rochester.....	25
McInerney Detective Bureau 601 Union Trust bldg Rochester.....	43
McKay Harry J 409 Central Trust bldg Rochester.....	58
Maier's L W Sons 870 Clinton av N, Rochester.....	48
Manuel Specialties Co 119 Westland av Roch, Brighton.....	66
Martin A N Sons Inc 254 East av Rochester.....	59
Mechanics Savings Bank 18 Exchange and 89-91 East av Rochester.....	36
Miller Charles F 202 E & B bldg Rochester.....	insert opp 388
Miner Geo L Co 184-188 Clinton av S, Rochester.....	61
Monroe County Savings Bank 35 State and Main E at Gibbs Rochester.....	34
Moore & Fiske 105 Lake av Rochester.....	top lines
Morse C H & Son 15 S Water Rochester.....	70
Morse Wm B Lumber Co 340 Main W 936 Main E 101 S Ford and Thomas av at Stutson, Rochester.....	59
Mudge Charles E 119 Cutler bldg Rochester.....	inside front cover
Newell George R Inc 103 Main W, Rochester.....	46
Northway T J Inc 100 Exchange Rochester.....	20
Nye, Forbes & Porter 107 Commerce bldg Rochester.....	57

	PAGE
Ontario Ice Co Inc Coal, Lake rd Sea Breeze, Irondequoit.....	41
Palmer Allan R Co Inc 1100 Commerce bldg Rochester.....	25
Parker-Consler Agency 114 Wilder bldg Rochester.....	57
Paviour R S & Son Inc 1007 Commerce bldg Rochester.....	56
Peoples Coal & Lumber Co 4585 Lake av Rochester.....	60
Pioneer Drug Store 4374 Culver rd Sea Breeze, Irondequoit.....	top line
Portland Builders Supply Inc 1075 Ridge rd E Roch, Irondequoit.....	38
Pritchard Orvis L 609 Wilder bldg Rochester.....	57
Provident Loan Society 31 Exchange rm 401 Rochester.....	top lines
Provident Mutual Life Ins Co of Philadelphia Pa 600-608 Lincoln-Alliance Bank bldg Rochester.....	insert opp 388
Raithel Auto Supply Co 334 East av Rochester.....	21
Rambert Chester T, Washington av nr Wabash av Roch, Irondequoit.....	top line
Rice Wm S Inc 136 Clinton av S, Rochester.....	18
Roberts L A 303-305 Central Trust bldg Rochester.....	68
Rochester Abendpost 237 Andrews Rochester.....	63
Rochester Building Movers 29 Furlong rd Henrietta, Brighton.....	38
Rochester Floral Co 33 Franklin Rochester.....	47
Rochester News Corporation 136 StPaul Rochester.....	62
Rochester Printing Co 61 Main E, Rochester.....	62
Rochester Savings Bank, Main W at Fitzhugh and 40 Franklin Rochester.....	35
Rochester Times-Union Inc, Times square Broad W cor Exchange Rochester....	63
Rochester Trust & Safe Deposit Co Main W at Exchange Rochester.....	30
Rothschild L F & Company, Lincoln-Alliance Bank bldg Rochester.....	23
Rugg C H Co 255 N Union cor Augusta Rochester.....	38
Ryan & Ryan Inc 136 Thorndyke road Roch and 84 Charlton rd do Irondequoit..	69
Sabin Hardware 2888 Dewey av Roch, Greece.....	top line
Sage, Wolcott & Steele 1002-1004 Lincoln-Alliance Bank bldg Rochester.....	24
Sanders Co The 16-20 Ward Rochester.....	21
Sargent-Baker Inc 29-37 S Union Rochester.....	20
Schaefer Bros Builders Supply Co Inc 116 Powers bldg Rochester.....	39
Scheer E J 259 Main E at Cortland Rochester.....	58
Schmitt William F, Latta rd North Greece, Greece.....	top line
Schoellkopf Hutton & Pomeroy Inc 1231-1239 Lincoln-Alliance Bank bldg Rochester	25
Schoen Bros 68 Genesee Rochester.....	20
Schwartz Wm F & Son Inc 15-17 Industrial Rochester.....	71
Security Trust Co, Main E at S Water Rochester.....	31
Smith Graham & Rockwell, Sagamore Hotel 115 East av Rochester.....	23
Smith L Walton Agency 701-703 Commerce bldg Rochester.....	57
Sullivan H H Inc 67 South av Rochester.....	37
Summerhays Wm Sons Corp 614-632 Clinton av S, Rochester.....	42
Sutro Bros Co 404 Lincoln-Alliance Bank bldg Rochester.....	back cover
Teall's Ice Cream Co Inc 285 Ormond Rochester.....	52
Title & Mortgage Guarantee Co of Buffalo 916 Lincoln-Alliance Bank building Rochester.....	70
Tosch Fred P Inc 1633 Clinton av N, Roch, Irondequoit.....	insert opp 389
Union Trust Co 19 Main W, Rochester.....	32
Watts Dry Cleaning Co Inc 322 Cottage Rochester.....	43
Weed and Company 15 Exchange Rochester.....	51
West Charles C Coal Co Inc 281 N Union Rochester.....	40
Wheeler Refrigerator Corp 33 StPaul and 260 East av Rochester.....	44
Wilson H E Inc 42 Main E and 835 Hudson av Rochester.....	47
Windsor & Windsor Inc 321 Powers bldg Rochester.....	56
Woodams W G 783 South av Rochester.....	40
Woodcraft Shop The 300 Norton Rochester.....	38

City Directory Statistical Review

Suggested and Planned by American Community Advertising Association

Adopted by Association of North American Directory Publishers

Compiled by Statistical Bureau, Rochester Chamber of Commerce

ROCHESTER, NEW YORK—"The Flower City"

Form of Government: City Manager.

Population: 316,786, State census 1925; 333,614, estimated 1929.

Predominating Nationalities: Aside from Native: Italian, German, Canadian, Russian and English.

Area: Thirty-four square miles. Altitude 500 to 679 feet.

Assessed Valuation: \$637,290,606. Tax rate \$25.72 per thousand in 1929.

Parks: 33 with 1,777 acres valued at \$3,000,000. Public baseball diamonds and tennis courts in all of the larger parks, and public golf links at Genesee Valley and Durand-Eastman. In addition there are nine private golf courses close to city.

City's Bonded Debt: 1929, \$60,693,150.

Financial: Rochester has four savings banks, five trust companies and one commercial bank in 1928 with total deposits of \$381,983,951. Resources not including buildings and equipment amounted to \$437,475,069. Clearings aggregated \$776,900,082. During the first part of 1929 a national bank and trust company was organized.

Post Office Receipts: 1928, \$2,935,865. Telephones in service Sept. 30, 1929, 84,055.

Churches: 185 of all denominations.

Building Construction: 1928, value of building permits, \$17,620,698, providing quarters for 1,862 additional families. Leads all cities of like size east of the Rockies in home ownership.

Industry: 1,044 manufacturing establishments producing goods valued at more than \$5,000 each annually. Selling value of manufactured products \$427,730,792. Salaries and wages \$113,564,461. Leads the world in the manufacture of photographic film, cameras, mail chutes, optical goods, check protectors, thermometers, office systems, enameled steel tanks and horticultural products. Ranks high in the production of clothing, buttons, shoes, machinery, telephone apparatus, radio, electrical supplies, railway signals and lithography.

Trade: Retail territory serves 700,000 people within a radius of thirty-five miles. Jobbing territory serves 2,000,000 people within ninety mile radius. Retail establishments sold to customers \$126,953,179 in 1927. Live Chamber of Commerce with over 4,000 members.

Hotels: Nine modern with total of 2,650 rooms.

Transportation: Five railroads, the New York Central, Pennsylvania, Lehigh, Buffalo, Rochester & Pittsburgh; five inter-urban trolleys and fifteen bus lines enter the city. Barge Canal Harbor and warehouses in centre of city. City owned Port of Rochester on Lake Ontario seven miles from centre of City, with regular day and night boat service to Canada and Thousand Islands; two daily ferries to Canada. City owned subway crosses entire city for inter-urban passenger and freight service. Municipality owned and operated flying field covering 110 acres. In addition to the Municipal Airport, there are four private flying fields located in or near Rochester.

Amusements: There are eight theatres for stage productions, the largest seating 4,200 people; numerous motion picture houses, municipally owned Convention Hall, International League baseball, and the annual Exposition and Horse Show.

Education: There are sixty public schools, including one normal, five senior high and four junior high schools. Number of pupils in public schools exceeds 70,000 and there are 2,263 teachers. There are thirty-nine parochial schools having a total enrollment of approximately 30,000. These include three high schools.

A civic orchestra of fifty pieces frequently gives concerts to develop among high school students an appreciation for music. Popular programs are given before the public for the same purpose on Sundays.

Advantages for higher education are offered through the University of Rochester, including the Eastman School of Music and the College of Medicine and Dentistry; Mechanics Institute, Colgate-Rochester Divinity School, Nazareth Academy and St Bernard's R. C. Seminary.

There is also a school for the deaf.

Street Mileage: 1928-518 miles with 399 miles paved, 511 miles of sewers, 179 miles electric street railway. Pure water from city owned lakes, thirty miles away, with capacity of 242,000,000 gallons, and an average daily pump of 30,000,000 gallons. There are approximately 550 miles of mains and an estimated plant value of over \$14,000,000.

Fire Department: Employed 508 men in 1928. Twenty-three engine companies, ten trucks, five hose, one water tower, one protective and two supply companies. All modern motorized equipment.

Police Department: Has 465 men with seven precincts.

The Rochester Chamber of Commerce will furnish any additional information on request.

POPULATION OF NEW YORK

11

*N. Tonawanda..	17,356
Pendleton.....	1,319
Porter.....	2,444
Royalton.....	4,846
Somerset.....	2,187
Wheatfield.....	2,039
Wilson.....	3,151
Tuscarora Indian Reservation....	395

133,437

Oneida.

Annsville.....	1,339
Augusta.....	1,887
Ava.....	620
Boonville.....	3,340
Bridgewater.....	730
Camden.....	3,222
Deerfield.....	854
Florence.....	745
Floyd.....	779
Forestport.....	948
Kirkland.....	5,410
Lee.....	1,332
Marcy.....	1,506
Marshall.....	1,530
New Hartford.....	6,918
Paris.....	3,367
Remsen.....	913
*Rome.....	30,328
Sangerfield.....	1,957
Steuben.....	757
Trenton.....	2,448
*Utica.....	101,604
Vernon.....	4,953
Verona.....	3,352
Vienna.....	1,740
Western.....	1,151
Westmoreland.....	2,217
Whitetown.....	10,539

196,486

Onondaga

Camillus.....	3,521
Cicero.....	3,432
Clay.....	3,043
DeWitt.....	15,064
Elbridge.....	3,008
Fabius.....	3,223
Geddes.....	9,157
Lafayette.....	1,441
Lysander.....	5,011
Manlius.....	7,402
Marcellus.....	3,012
Onondaga.....	8,622
*Otisco.....	9,331
Pompey.....	2,009
Salina.....	6,659
Skaneateles.....	4,735
Spafford.....	768
*Syracuse.....	182,003
Tully.....	1,447
Van Buren.....	3,799
Onondaga Indian Reservation....	622

267,009

Ontario.

Bristol.....	791
Canadice.....	382
Canandaigua.....	2,022
*Canandaigua.....	7,686
E. Bloomfield.....	1,860
Farmington.....	1,536
Geneva.....	1,330
*Geneva.....	15,908
Gorham.....	1,950
Hopewell.....	1,340
Manchester.....	5,681
Naples.....	2,080
Phelps.....	4,641
Richmond.....	985
Seneca.....	2,769
South Bristol.....	691
Victor.....	2,505
W. Bloomfield.....	1,083

55,240

Orange.

Blooming Grove..	2,036
Chester.....	2,105
Cornwall.....	5,561
Crawford.....	1,729
Deerpark.....	1,852
Goshen.....	5,124
Greenville.....	704
Hamptonburg.....	1,030
Highlands.....	4,157
*Middletown.....	20,412
Minisink.....	1,371
Monroe.....	2,802
Montgomery.....	8,220
Mount Hope.....	1,976
Newburgh.....	4,760
*Newburgh.....	30,419
New Windsor.....	3,010
*Port Jervis.....	10,507
Tuxedo.....	2,969
Walkill.....	3,522
Warwick.....	7,306
Wawayanda.....	2,040
Woodbury.....	2,017

125,629

Orleans.

Albion.....	6,347
Barre.....	1,780
Carlton.....	1,888
Clarendon.....	1,223
Gaines.....	1,862
Kendall.....	1,362
Murray.....	3,621
Ridgeway.....	6,342
Shelby.....	4,228
Yates.....	2,039

30,692

Oswego.

Albion.....	1,315
Amboy.....	607
Boylston.....	495
Constantia.....	1,747
*Fulton.....	12,571
Granby.....	2,087
Hannibal.....	1,945
Hastings.....	2,173
Mexico.....	2,786
Minetto.....	976
New Haven.....	1,237
Orwell.....	844
Oswego.....	1,940
*Oswego.....	22,369
Palermo.....	1,079
Parish.....	1,335
Redfield.....	674
Richland.....	3,886
Sandy Creek.....	2,227
Schroepfel.....	2,983
Scriba.....	2,035
Volney.....	2,481
West Monroe.....	779
Williamstown.....	728

71,404

Otsego.

Burlington.....	925
Butternuts.....	1,288
Cherry Valley.....	1,419
Decatur.....	398
Edmeston.....	1,548
Exeter.....	818
Hartwick.....	1,691
Laurens.....	1,410
Maryland.....	1,701
Middlefield.....	1,465
Milford.....	1,717
Morris.....	1,367
New Lisbon.....	872
Oneonta.....	2,087
*Oneonta.....	12,057
Otego.....	1,494
Otsego.....	4,239
Pittsfield.....	778
Plainfield.....	761
Richfield.....	2,144
Roseboom.....	679
Springfield.....	1,281

Unadilla.....	2,408
Westford.....	688
Worcester.....	2,169

47,404

Putnam.

Carmel.....	2,929
Kent.....	739
Patterson.....	1,122
Phillipstown.....	3,581
Putnam Valley.....	855
South East.....	3,274

12,500

Queens.

Queens borough (see also New York city).....	713,891
--	---------

Rensselaer.

Berlin.....	1,450
Brunswick.....	3,529
E. Greenbush.....	2,054
Grafton.....	755
Hoosick.....	7,262
Nassau.....	2,380
N. Greenbush.....	1,541
Petersburg.....	1,083
Pittstown.....	2,583
Poestenkill.....	1,137
*Rensselaer.....	11,394
Sandlake.....	1,982
Schaghticoke.....	2,949
Schockack.....	4,782
Stephentown.....	1,325
*Troy.....	72,223

118,429

Richmond.

*Richmond borough (see also New York city).....	138,277
---	---------

Rockland.

Clarkstown.....	9,473
Haverstraw.....	11,781
Orangetown.....	16,694
Ramapo.....	15,020
Stony Point.....	3,511

56,470

Saint Lawrence.

Brasher.....	1,970
Canton.....	7,160
Clare.....	144
Clifton.....	1,696
Colton.....	1,219
DeKalb.....	2,419
DePeyster.....	791
Edwards.....	1,479
Fine.....	1,254
Fowler.....	1,344
Gouverneur.....	5,703
Hammond.....	1,358
Herkon.....	1,295
Hopkinton.....	1,184
Lawrence.....	1,476
Lisbon.....	2,796
Louisville.....	1,317
Macomb.....	983
Madrid.....	1,379
Massena.....	10,277
Morristown.....	1,705
Norfolk.....	3,091
*Ogdensburg.....	17,047
Oswegatchie.....	2,238
Parishville.....	1,370
Pierceland.....	1,391
Pierrepont.....	1,372
Pitcairn.....	564
Potsdam.....	9,407
Roselle.....	766
Russell.....	1,607
Stockholm.....	2,253
Waddington.....	1,751

91,806

Saratoga.

Ballston.....	2,601
Charlton.....	1,012
Clifton Park.....	2,398
Corinth.....	3,713
Day.....	455
Edinburg.....	601
Galway.....	1,236
Greenfield.....	1,730
Hadley.....	578
Halfmoon.....	1,689
Malta.....	1,373
*Mechanicville.....	8,514
Milton.....	5,922
Moreau.....	3,851
Northumberland.....	1,105
Providence.....	436
Saratoga.....	3,726
*Saratoga Springs.....	13,884
Stillwater.....	4,103
Waterford.....	5,644
Wilton.....	1,035

65,606

Schenectady.

Duanesburg.....	2,216
Glenville.....	9,375
Niskayuna.....	3,724
Princeton.....	495
Rotterdam.....	8,112
*Schenectady.....	92,786

116,708

Schoharie.

Blenheim.....	472
Broome.....	732
Carlisle.....	919
Cobleskill.....	4,041
Conesville.....	647
Esperance.....	902
Fulton.....	1,117
Gilboa.....	1,738
Jefferson.....	992
Middleburg.....	2,068
Richmondville.....	1,374
Schoharie.....	2,227
Seward.....	1,163
Sharon.....	1,510
Summit.....	865
Wright.....	798

21,565

Schuyler.

Catharine.....	1,177
Cayuta.....	309
Dix.....	3,588
Hector.....	3,134
Montour.....	1,974
Orange.....	825
Reading.....	1,293
Tyrone.....	1,156

13,456

Seneca.

Covert.....	1,622
Fayette.....	2,380
Junius.....	862
Lodi.....	1,102
Ovid.....	2,755
Romulus.....	3,028
Seneca Falls.....	7,313
Tyre.....	791
Varick.....	1,024
Waterloo.....	4,486

25,363

Steuben.

Addison.....	2,127
Avoca.....	1,830
Bath.....	7,009
Bradford.....	547
Cameron.....	771
Campbell.....	1,194
Canisteo.....	3,256
Caton.....	658
Cohocton.....	2,084

POPULATION OF NEW YORK

Corning..... 2,964	Rockland..... 3,640	Warren.....	Westchester.....
*Corning..... 15,722	Thompson..... 5,934	Bolton..... 1,304	Bedford..... 7,437
Dansville..... 1,065	Tusten..... 942	Caldwell..... 1,638	Cortland..... 24,748
Erwin..... 3,305		Chester..... 1,693	Eastchester..... 12,976
Fremont..... 729		*Glens Falls..... 17,851	Greensburg..... 30,534
Greenwood..... 967		Hague..... 792	Harrison..... 7,187
Hartsville..... 481		Horicon..... 819	Lewisboro..... 1,423
Hornby..... 757	Tioga.....	Johnsburg..... 2,373	Mamaroneck..... 13,124
*Hornell..... 15,784	Barton..... 7,199	Luzerne..... 1,102	Mount Pleasant..... 18,095
Hornellsville..... 2,382	Berkshire..... 844	Queensbury..... 3,040	*Mt. Vernon..... 50,382
Howard..... 1,101	Candor..... 2,736	Stony Creek..... 627	Newcastle..... 5,899
Jasper..... 1,040	Newark Valley..... 1,931	Thurman..... 580	*New Rochelle..... 44,222
Lindley..... 1,012	Nichols..... 1,490	Warrensburg..... 2,251	North Castle..... 2,295
Prattsburg..... 1,533	Owego..... 7,783		North Salem..... 1,199
Pulteney..... 1,082	Richford..... 754		Ossining..... 15,251
Rathbone..... 719	Spencer..... 1,542		Pelham..... 9,085
Thurston..... 630	Tioga..... 1,832		Poundridge..... 559
Troupsburg..... 1,200		Washington.....	Rye..... 31,430
Tuscarora..... 816		Argyle..... 1,504	Scarsdale..... 5,099
Urbana..... 2,221		Cambridge..... 1,599	Somers..... 1,393
Wayland..... 3,002	Tompkins.....	Dresden..... 459	*White Plains..... 27,428
Wayne..... 517	Caroline..... 1,603	Easton..... 1,792	*Yonkers..... 113,647
West Union..... 724	Danby..... 1,313	Fort Ann..... 2,897	Yorktown..... 2,385
Wheeler..... 733	Dryden..... 3,426	Fort Edward..... 5,747	
Woodhull..... 1,283	Enfield..... 973	Granville..... 5,770	
	Groton..... 3,889	Greenwich..... 4,193	
	Ithaca..... 2,564	Hampton..... 660	Wyoming.....
	*Ithaca..... 18,948	Hartford..... 1,129	Arcade..... 2,393
	Lansing..... 2,851	Hebron..... 1,136	Attica..... 2,893
	Newfield..... 1,522	Jackson..... 869	Bennington..... 1,738
	Ulysses..... 2,470	Kingsbury..... 7,887	Castile..... 2,285
		Putnam..... 538	Covington..... 741
		Salem..... 2,195	Eagle..... 1,017
		White Creek..... 2,071	Gainesville..... 2,320
		Whitehall..... 6,415	Genesee Falls..... 603
			Java..... 1,408
			Middlebury..... 1,270
			Orangeville..... 762
			Perry..... 5,473
			Pike..... 987
			Sheldon..... 1,676
			Warsaw..... 4,594
			Wethersfield..... 667
			</

POPULATION OF NEW YORK—1790 TO 1920.

CENSUS YEAR	Population	Increase over preceding census		Per cent of increase for the United States
		Number	Per cent	
1920.....	10,384,829	1,271,215	13.9	14.9
1910.....	9,113,614	1,844,720	25.4	21.0
1900.....	7,268,894	1,265,720	21.1	20.7
1890.....	6,003,174	920,303	18.1	25.5
1880.....	5,082,871	700,112	16.0	30.1
1870.....	4,382,759	502,024	12.9	22.6
1860.....	3,880,735	783,341	25.3	35.6
1850.....	3,097,394	668,473	27.5	35.9
1840.....	2,428,921	510,313	26.6	32.7
1830.....	1,918,608	545,796	38.8	33.5
1820.....	1,372,812	413,763	43.1	36.4
1810.....	959,049	369,998	62.8	35.1
1800.....	589,051	248,931	73.2	
1790.....	340,120			

MONROE COUNTY

Incorporated in 1821—Includes 682 square miles.

BOARD OF SUPERVISORS.

Salary, \$1,200. Elected Biennially. Annual Session begins on Second day of January. Regular Meetings First and Second day of each month at the Supervisors' Rooms, Court House.

Rochester.

Terms of all expire December 31, 1931.

Ward 1.—William J. Callister.
 " 2.—Frank Battaglia.
 " 3.—Charles T. Struble.
 " 4.—Augustus B. Hone.
 " 5.—John C. Gelmer.
 " 6.—Herbert S. Jenner.
 " 7.—Jerry R. Leonardo.
 " 8.—Joseph Bloch.
 " 9.—Peter Roncone.
 " 10.—George H. Hesselink.
 " 11.—Charles Hawkens.
 " 12.—Elmer E. Chilson.

Ward 13.—Timothy J. Kelly.
 " 14.—J. Grover Conley.
 " 15.—John J. Kennedy.
 " 16.—Frank Nanna.
 " 17.—Philip Heberger.
 " 18.—Arthur J. Killip.
 " 19.—Henry W. Legg.
 " 20.—William Kramer.
 " 21.—Karl T. Soule.
 " 22.—Edward L. Miller.
 " 23.—John G. Ferguson.
 " 24.—Frederick J. Ruppel.

Towns.

Terms of all expire December 31, 1931.

Brighton.—A. Emerson Babcock.
 Chili.—Walter H. Wickens.
 Clarkson.—Jay B. Moore.*
 Gates.—Benjamin F. Metcalf.
 Greece.—William F. Schmitt.
 Hamlin.—Fred Leverenz.
 Henrietta.—Homer E. Benedict.
 Irondequoit.—Thomas E. Broderick.
 Mendon.—Lewis N. Cole.
 Ogden.—Julius G. Stettner.

Parma.—Myron Roberts.
 Penfield.—Howard C. Whalen.
 Perinton.—Jesse B. Hannan.
 Pittsford.—Jared W. Hopkins.
 Riga.—Walter Robinson.
 Rush.—Albert M. Goff.
 Sweden.—George A. Beadle.
 Webster.—Dayton T. Lawrence.
 Wheatland.—Romeyn S. Dunn*
 *Two Democrats, others are Republicans

Clerk Board of Supervisors—Clarence A. Smith, salary, \$7,000. Deputy Clerk—Frederick H. Hacker, salary, \$4,325. Record Clerk—Merton J. DeWitt, salary, \$4,300. Bookkeeper—Earl J. Miller, salary, \$3,250. General Clerk—Joseph P. Loney, salary, \$2,700. Counter Clerk—John G. Cullen, salary, \$2,325. Clerk—William H. Clark, jr., salary, \$1,925; appointed annually by the Supervisors.

Commissioners of Public Buildings—Wm. J. Callister, Timothy J. Kelly, Lewis M. Cole, Walter Robertson; meet at Court House, Wednesdays; appointed annually by the Supervisors.

Superintendent of Schools—Fred W. Hill, Brockport; Wallace W. Rayfield, Webster; Mark Furman, East Rochester, John Malloch, Churchville.

County Sealer of Weights and Measures—William A. Payne, 65 Broad W., rm. 305; salary, \$4,150; appointed annually by the Supervisors.

Librarian Appellate Division (Law Library)—Fred E. Roshbrook; appointed by the Justices of Appellate Division, Fourth Dept. Assistant—Mrs. Lois Dean. Second Assistant—Edna L. Block.

County Superintendent of Highways—George C. Wright, salary, \$6,800; appointed by the Supervisors. Purchasing Agent—Mrs. Lillian R. Jones, salary, \$4,500; elected by the people; term expires Dec. 31, 1931.

Dep. Purchasing Agent—Adelaide R. Heberling, salary, \$2,375. Clerks—Mildred Hill, salary, \$1,700; Abigail J. Rice, salary, \$1,320; appointed by Purchasing Agent. Secretary—Catherine Farrell, salary, \$1,650.

Superintendent Court House—Patrick Grant, salary, \$3,075.

Chief Engineer—Arthur Fertig, salary, \$2,600.

Night Watchman Court House—Edward Meyer, salary, \$1,980.

County Bacteriologist—Christopher F. Chaffe, salary, \$4,150; appointed annually by the Supervisors.

Office Assistant—M. E. Leathersich, salary, \$2,125. Laboratory Assistant—Mrs. G. A. Metcalfe, salary, \$1,700.

COUNTY CLERK'S OFFICE.

Office, Court House, Rochester

Office Hours, 9 A. M. to 5 P. M.

County Clerk—John H. Law, salary, \$7,500; elected by the people; term three years; expires December 31, 1930.

Private Secretary—Ella M. Thaney, salary, \$2,000.

Deputy Clerk—W. I. Burritt, salary, \$4,500.

First Assistant—William C. Yorcker, salary, \$3,000.

Second Assistant—Howard G. Cooper, salary, \$3,000.

Supreme Court Clerk—John C. Hohe, salary, \$3,600.

County Court Clerk—John H. Gilmore, salary, \$3,475.

Asst. County Court Clerk—William J. Ward, salary, \$3, 475.

Asst. Court Clerk—Joseph H. Perkins, salary, \$3,475.

Naturalization and Assistant Court Clerk—M. C. Roberts, salary, \$3,600.

Judgement Clerk—Martha M. Tait, salary, \$2,125.

Mortgage Tax Clerk—Edna M. Killip, salary, \$2,125.

Search Clerks—Anna Kavanaugh, May Kavanaugh, Charles Davis, George A. Kapell, Helen C. Wallace, Clyde LeMessurier, August V. Pappert, Arthur R. Quackenbush, salaries, fifty-five per cent of fees.

Superintendent of Records—Jennie Oliver, salary, \$2,125.

General Indexer—Agnes M. Bermingham, salary, \$2,375.

Assistant Indexers—Bernice M. Hill, Mertha B. Reagan, A. Maude Purdy, Margaret G. Fanning, salaries, \$1,700

Computers—Ida M. Salyerds, Margaret I. Lewis, Minnie D. Wisel, Mary E. Cooper, salaries, \$1,700.

Recorders—Margaret F. Kellerby, S. Corinne Hill, Florence G. Merrick, Julia A. Heavey, Emma L. Cook, Emogene Marshall, Bessie W. Sill, Grace B. Swift, Agnes M. McGlynn, Gertrude Froehlicher, Grace Dugan, Emma Howard, Eleanor M. Geraghty, Marie H. Allbright, Winifred M. Page, Edith D. Fraher, Kathleen Carroll, Florence E. Tobin, Mrs. Mary E. Knapp, Helen M. Brown, Adelaide Cray Johnson; Evelyn Harrison, typist.

Clerks—Edith A. Allen, Winifred E. Clement, Louise Hanna, George H. Hunter, Frances J. Larkin, Gertrude M. Lavin, Mary M. Miller, Esmah C. Nicholson, Adah Joan Smith, Florence M. Sullivan, Margaret D. Thompson, Lester E. Guiles, salaries, \$1,200 to \$1,700.

Porter—Porter J. Wilson, salary, \$1,700.

Labors—Henry Washington, William J. Cougevan, salaries, \$1,700; Charles L. Goetzman, salary \$1,320.
Typewriter Copyist—Maud A. DeWitt, salary, \$2,800.
Cashier—John A. Daehn, salary, \$2,125.
Clerk Auto Bureau—Thomas E. Mykins, salary, \$3,000.
Stenographer—Lena A. Betz, salary, \$1,575.
Court Messenger—Morris Meyer, salary, \$1,700.
 The County Clerk appoints all his subordinates.

FINANCIAL DEPARTMENT.

Office, Court House, Rochester. Office Hours, 10 A. M. to 3 P. M.

County Treasurer—Harry J. Bareham, salary, \$4,500; elected by the people; term three years, expires October 6, 1933.
Deputy Treasurer—Arthur H. Jameson, salary, \$4,500; appointed by County Treasurer.
Cashier—George S. Harmon, salary, \$3,500; appointed by County Treasurer.
Clerks—Jas. A. Patterson, salary, \$2,375; Fred B. McGuire, salary, \$3,125; James B. Milligan, salary, \$2,950; Geo. White, salary, \$2,375; Francis L. Ryan, salary, \$2,050; John D. Allen, salary, \$2,050; Clarence P. Wagner, salary, \$2,050; Charlotte M. Grabb, salary, \$1,825; Ellsworth W. Relyea, salary, \$1,600; appointed by County Treasurer.

LAW DEPARTMENT.

Office, Court House, Rochester

District Attorney—William F. Love, of Rochester, salary, \$10,000, fixed by Supervisors; elected by the people; term three years; expires December 31, 1931.
Asst. District Attorneys—Fred S. Holbrook, of Spencerport, salary, \$5,675; Jacob Ark, salary, \$5,000; Carlyle B. Newcomb, salary, \$4,500; Rudolph Napodano, salary, \$4,150; Stephen K. Pollard, salary, \$3,475; Basil E. Moore, Clarence J. Henry, salaries, \$3,150; appointed by District Attorney.
Grand Jury Stenographers—Edgar C. Ostrander, salary, \$2,850; Bert J. Barton, salary, \$2,600; fixed by Board of Supervisors; appointed by District Attorney.
Asst. Grand Jury Stenographer—Laura L. Schy, salary, \$1,825; fixed by Board of Supervisors; appointed by District Attorney.
Confidential Stenographer—Virginia B. Armstrong, salary, \$1,825; appointed by District Attorney.
Special Detective—George L. Miller; detailed from Police Department by Commissioner of Public Safety.
Managing Clerk—Frank B. Schmidt, salary, \$3,500; appointed by District Attorney.

COUNTY ATTORNEY'S OFFICE.

County Attorney—James E. Cuff; salary 1930, \$6,000; salary 1931, \$6500; appointed by Supervisors; term expires December 31, 1931.
Stenographer—May J. Brady, salary, \$1,825.

COMMISSIONER OF JURORS.

Commissioner of Jurors—George W. Aldridge, salary, \$4,000; appointed by the resident Judges of the Supreme Court and Judge of Monroe County Court; term five years; expires 1933.
Clerks—Leah I. Sawyer, salary, \$2,375; Mrs. C. Lillian Rich, salary, \$1,650.
Messenger and Interpreter—August J. May, salary, \$2,375.
 All subordinates are appointed by the Commissioner of Jurors, and approved by the Justices of the Supreme Court and Judge of County Court.

COMMISSIONER OF ELECTIONS.

Office, Court House, Rochester. Hours, 9 A.M. to 5 P. M.

Commissioner of Elections—H. Alden Nichols; term expires April 30, 1932; salary, \$6,500; appointed by County Judge, Special County Judge and Surrogate for a term of four years.
Stenographers—Helen R. Lannan, Evelyn F. Barton, salaries, \$1,680.
Chief Clerk—Robert W. Smith, salary, \$3,000.
Clerk—Alice E. Quinn, salary, \$1,440.

SHERIFF AND DEPUTIES.

Office, Court House, Rochester.

Sheriff—Fred D. Budd, elected by the people; term three years; expires December 31, 1931; salary, \$4,000; fixed by statute.
Under Sheriff—William C. Stalknecht, salary, \$4,500; appointed by the Sheriff.
Chief Deputy Sheriffs—Thomas Woods, Nelson Milne, salaries, \$3,000. *Asst. Chief Deputy Sheriff*—W. Martin Jones, salary, \$3,000.
Deputy Sheriffs—Edward Rice, William L. Torrey, Edward Heberger, George A. Conway, Patrick H. O'Loughlin, Michael A. DeLeo, Raymond O'Loughlin, Andrew C. Berg, Harry Ovenburg, Charles Kase, Agostio Vicaretti, Elmer Wood, Albert Murphy, Reuben Fitch, Fred Kussmaul, Morris VanGraafelland, Rochester; Edwin A. Jenkins, Scottsville; George W. Stewart, Brockport; Alphonse Cason, Charlotte; George H. Klem, George Gordon, Brighton; Geo. W. Leake, Irondequoit; Charles A. Miller, Coldwater; Charles A. Smith, W. Webster; Walter Whelahan, Louis Bittker, Greece; Robert J. Fagan, Henrietta; Walter Wilcox, Gates.
Secretary to Sheriff—Irene Rless, salary, \$1,825.

JAIL.

Jailers—Albert Haight, John Platt, James Bray; salaries, \$2,420. *Asst. Jailers*, Frederick C. Streeb salary, \$2,125; Margaret McLaughlin, Anna Tobin, salaries, \$1,250; appointed by the Sheriff.
Physician—James Davis, salary, \$1,080; appointed by the Supervisors.
Chaplains—Protestant, Robert J. Drysdale; Catholic, J. Francis O'Hern; Jewish, Solomon Sadow-sky, salaries, \$575; appointed by the Supervisors.
Watchmen—Clarence Bates, John Lukasy, George J. Salle, salaries, \$2,420; appointed by the Sheriff.
Matron—Frances M. Budd, salary, \$885; appointed by the Sheriff.
Engineer—John Wilson, salary, \$1,825.

CORONERS.

Office, Public Morgue, 70 Clarissa Street, Rochester.

Richard A. Leonardo, David H. Atwater, elected by the people for a term of three years; term expires December 31, 1931; salaries, \$3,000. *Attendants*—Patrick J. Brennan, Benedict Corcoran, salaries, \$2,125; appointed by the Supervisors.
Chaufeurs—George M. Glasser, Alfredo Maurizio, William Brodle, Lorin T. Hinton, salaries, \$1,500.
Labors—Philip Elsenhauer, Martin Sullivan, salaries, \$1,650.

Coroners' Physicians—Appointed annually by the Supervisors.

First District— salary, \$250.

Second District—Walter J. Riley, for East side; Floyd Winslow, for West side, Rochester; salaries, \$990.

Third District—John L. Hazen, Brockport, salary, \$250.

MONROE COUNTY BOARD OF CHILD WELFARE.

Office, 65 Broad W., rm. 513., Rochester.

Members of the Board ———, Chairman. Mrs. Mary A. Whittle, Vice-Chairman. Mrs. Sherman Clarke, Mrs. Ida M. Gordon, Mrs. Charles J. Paisley, May E. Rosenthal, Harry B. Crowley. Secretary—Verna A. Chapin, salary, \$2,580; Assistant Secretary, M. Vera Wilbur, salary, \$2,125; Domestic Educator, Christine M. Galvin, salary, \$2,125; fixed by the board.

County Committee—Mrs. Mary A. Whittle, Mrs. Charles J. Paisley, May E. Rosenthal.

Law Committee—Mrs. Sherman Clarke, Mrs. Mary A. Whittle, Harry B. Crowley.

Medical Committee—May E. Rosenthal, Mrs. Ida M. Gordon, Harry B. Crowley.

Office Administration Committee—Mrs. Ida M. Gordon, Mrs. Sherman Clarke, Mrs. Charles J. Paisley.

Committee on Application and Investigation—Harry B. Crowley, May E. Rosenthal, Mrs. Sherman Clarke.

"Family Committee"—Mrs. Charles J. Paisley, Mrs. Mary A. Whittle, Mrs. Sherman Clarke, Mrs. Ida M. Gordon.

MONROE COUNTY POOR DEPARTMENT.

Superintendent—William F. Udell; office, Court House; salary, \$6,000; fixed by the Supervisors, term of office, three years; expires December 31, 1933.

County Outdoor Relief Dept.—Court House Dept. Supt.—Alice G. Paul, salary, \$2,850; fixed by the Supervisors. Secretary—Grace Marsellus, salary, \$1,825. Investigators—Mrs. Marie C. Taylor, Mary V. Putnam, salaries, \$1,825. Confidential Secretary—Dana M. Porter, salary, \$1,650. Open daily 9 A.M. to 4 P.M.

County Poor Physicians for Rochester—Charles R. Barber, Robert J. Campbell, William J. Gibson, L. H. Woodruff, Charles T. Lunsford, salaries, \$456; appointed by the Superintendent.

ALMSHOUSE—1450 SOUTH AVENUE, ROCHESTER

Warden—George H. Maitland, salary, \$2,850; appointed by the Superintendent.

Chaplains—William S. McCoy, Eugene Golding, salaries, \$575; appointed by the Supervisors.

Clerk—Edward Enright, salary, \$1,250.

Assistants—Appointed by the Superintendent. Matron—Maude I. Porter, salary, \$1,250. Baker—Wenzel G. Reber, salary, \$1,575. Teamster—Frank Costello, salary, \$1,250. Farmer—William J. Costello, salary, \$1,400. Watchman—Walter Creighton, salary, \$1,250. Laundress—Clara A. MacKercher, salary, \$912. Laundryman—Charles W. Piehler, salary, \$1,250. Cooks—Alice Warren and Alice Oliver, salaries, \$1,020. Assistant to Matron—Blanche Burnette, salary, \$912. Ward Helpers—John McMahon, salary, \$1,450 and Ray P. Costello, salary, \$1,200. Night Nurse—Catherine R. Doles, salary, \$912. Housekeeper—Augusta Streebing, salary, \$912.

MONROE COUNTY HOSPITAL—1460 SOUTH AVENUE, ROCHESTER.

Resident Medical Supervisor—Eric S. Green, salary, \$5,500. Interns—J. Coleman Kelly, salary, \$768. House Supt.—Belle T. Reagan, salary, \$1,575. Supt. of Nurses—Retah B. Hodges, salary, \$1,575. Night Asst. Supt. of Nurses—Ida V. Perry, salary, \$1,250. Day Asst. Supt. of Nurses—Elizabeth L. Knight, salary, \$1,300. Charge Nurse—Marie M. Whalen, salary, \$1,035. Clerk—Mildred M. Beecher, salary, \$1,575. Druggist—Florence B. Hamburg, salary, \$1,450. There are also 38 nurses and 7 other employees in the hospital at salaries ranging from \$768 to \$1,060 per year.

MONROE COUNTY PENITENTIARY.

Superintendent—Warren R. Henderson, salary, \$4,500; term expires December 31, 1931; appointed by the Supervisors.

Deputy Superintendents—Charles C. Schey, Eugene O'Neill, salaries, \$2,850; appointed by the Superintendent.

Bookkeeper—Joseph C. Powers, salary, \$2,250.

Physician—Henry T. Williams, salary, \$768.

Chaplains—Eugene Golding, W. A. Hallock, salaries, \$575.

Assistants—Appointed by the Superintendent. Night Watch—Albert Schoeller, salary, \$1,650. Over-
seer—Lida D. Henderson, salary, \$1,250.

Farmers—Joseph Horan, salary, \$1,575; Hiram Colwell, salary, \$1,400. Baker—Edward Karpf, salary, \$1,575. Chief Engineer—Harry Lancaster, salary, \$2,600. Engineers—John P. Abel, John J. Smith, George Bacon, salaries, \$2,125.

MONROE COUNTY IOLA SANATORIUM.

South Avenue corner Westfall Road, Rochester.

President—Max L. Holtz.

Vice-President—Chas. R. Barber.

Superintendent—Ezra R. Bridge.

Resident Physicians—Caroline B. Reed, Perry A. Bly, Arthur M. Stokes, Samuel E. Hughes.

Board of Managers—Max L. Holtz, Charles R. Barber, Edward J. Walsh, Floyd S. Winslow, Elbert W. Brigham.

Established by the County of Monroe, October 1, 1910, for the care and treatment of tuberculosis—Post Office Address, R. D. No. 2, Rochester, N. Y.

COUNTY COURT.

Court House, Rochester.

County Judges—William C. Kohlmetz, of Rochester, salary, \$12,000; fixed by statute; term expires 1934; Frederick L. Dutcher, of Rochester; salary, \$12,000; term expires December 31, 1931. Elected by the people.

Special County Judge—Henry D. Shedd, salary, \$10,000, fixed by statute; term expires December 31, 1931.

County Court Clerk—John H. Gilmour, salary, \$3,475.

Assistant Court Clerk—William J. Ward, salary, \$3,475.

Stenographers—Leslie H. Wayman, Howard G. Nobles; salaries, \$3,100 a year, and fees for copying; appointed by County Judge.

Special Clerk, Children's Court—Herbert J. Erb; salary, \$3,000; appointed by County Judge.

Clerk, Children's Court—Lou Magrain, salary, \$1,825; appointed by County Judge.

Chief Probation Officer for Children—Harry O. Argento, salary, \$3,075; appointed by County Judge.

Asst. Chief Probation Officer—Edward J. Taylor, salary, \$2,700.

Confidential Clerks to County Judge—Grayce H. DeBoer, Martha M. Miller, salaries, \$1,825.

Confidential Clerk to Special County Judge—Helen O. Vogler, salary, \$1,825.
Probation Officers—Helen M. O'Reilly and Millie J. Bristol, salaries, \$1,940.
Clerk and Stenographer, Children's Court—Margaret B. McKissick, salary, \$1,825; appointed by County Judge.
Stenographer and Record Clerk—Regina M. Powers, salary, \$1,825.

Monroe County Probation Office—Adult Division.

Chief Probation Officer—Abram N. Jones, salary, \$4,000.
Asst. Chief Probation Officer—Elmer T. Lindquist, salary, \$3,000.
Probation Officers—E. Fred Sweet, Joseph H. McMahon, George Gray, Charles B. Tutty, Jr., salaries, \$2,400.
Clerk—Emilie A. LePine, salary, \$2,400. Appointed by County Judge.
Stenographer—Esther S. Whall, salary, \$1,500.

Terms of Court.

Third Monday of January; third Monday of March; third Monday of May; third Monday of September; third Monday of November, each with a trial jury; every Saturday for contested motions and *Ex parte* applications, except during July and August and first two weeks of September when said motions will be heard on each Monday.

SURROGATE'S COURT.

Court House, Rochester.

Surrogate—Joseph M. Feeley, salary, \$12,000; fixed by statute; term six years; expires December 31 1931.

Clerk of Court—Mary G. Fahy, salary, \$3,575; appointed by the Surrogate.
Deputy Clerk—Marietta E. Allen, salary, \$2,700; appointed by the Surrogate.
Clerks—Indexer, Ada E. Campbell, salary, \$2,150; Anna M. Waltermann, Clara M. Seiner, Luta B. Lettington, salaries, \$1,700; Mabel W. Grey, Laura B. Wehnert, Helen M. Renaud, Ruth A. Holden, salaries, \$1,450; Mary M. O'Brien, salary, \$1,275.
Transfer Tax Clerk—Cordelia S. Monroe, salary, \$1,920.
Stenographer—Albert E. Lazarus, salary, \$3,000; appointed by the Surrogate.
Sessions daily at 10 a.m. (except Wednesdays and Saturdays and the month of August).

NOTARIES PUBLIC

Brighton.

Agnew Walter N.
Ainsworth George F.
Amsden Gilbert T.
Berman Henry
Bly Halton D.
Bodette Eugene J.
Bradley Walter L.
Bruggeman Lillian H.
Bryan James S.
Buckley May E.
Carroll Kenneth L.
Coapman Charles W.
Colborn Earl F.
Cole Duvall Y.
Combs William C.
Conslar Harold V.
Curren Harold S.
Davidson Sidney Z.
Davis J. Donald
DeGraff Herbert
Desborough Lorenz L.
Devine Adrian G.
Dorscheld Arthur J.
Doud Marie J.
Doyle Arlington T.
Eaton Frederic B.
Eccles Merrill
Ellenbogen Maurice
Farnum Lee V.
Faulkner Robert K.
Fisher Louis A.
Fitzsimmons Daniel J.
Frey John B.
Fulton Susanna P.
Gerhardt Elizabeth J.
Glen Harry L.
Goldstein Joseph
Gordon George E.
Griswold Hamilton C.
Hallock Fred F.
Hargrave Thomas J.
Hochstein Hymen L.
Hoepfl Raymond P.
Hogan Michael A.
Hone Alexander B.
Hunter George H.
Hunting Maro S.
Ingalsbe Ralph B.
Ingle Wm. O.
Jefferson C. Frederic
Jennings Charles S.
Joyce Maurice J.
Kaman Maurice J.
Keating Kenneth S.
Kendall Cyril L.
Keople Raymond A. C.
Klem Helen E.
Kohlman Coletta R.

Laass Emil
Laass Howard N.
Leary Daniel
Lee Florence S.
Lee Gerald C.
LeFevre Elmer J.
Lull Benjamin E.
Lumbert William
McCord Charles C.
McMillen Norman F.
Maloney William J.
Markin Elias R.
Maurer Arthur L.
Meyer Henry L.
Morris Flora R.
Moylan William S.
Ogden Edward M.
Papert Bertha T.
Parsons Judson A.
Pickard Albert G.
Rathjen Arthur
Richmond John C.
Roberts Carroll M.
Ross Mary A.
Searle Truman G.
Sharp Thomas A.
Shaw Bernard J.
Sheehan Elizabeth A.
Sheffer Merle L.
Shults Otto A.
Smith Edwin C.
Snyder Betty H.
Stenzel Harold F.
Sullivan John D.
Surgenor Lucille M.
Swan Walter A.
Trembley Carol W.
Tuety Edmund J.
VanDuser H. Douglass
Webster Archibald E.
Wilkes Frederick E.
Wokasten Winfred K.
Woodburn Robert S.
Wyant Homer C.
Wyatt Frederick E.

Gates.

Coldwater P. O.

Avery Edwin B.
Bierbrauer David P.
Casey Matthew J.
Daw Thomas F.
Diringer Charles E.
Field Chester
Gardner Mabel K.
Harrington Mary R.
Kennell Florence E.
Lynn Hester M.

Magner Thomas P.
Nichols Lawson L.
Schwartz Frederick C.

Greece.

Allen Wheeler D.
Beisheim Dora
Beisheim Fred G.
Benson Leona E.
Berry Daniel G.
Carroll John H.
Crittenden A. Whitman
Deming Wilbur C.
Denise William D.
Dunklee James E.
Easton John C.
Easton William G.
Eddy H. Nile
Etsberger Henry M.
Fairbanks Erwin L.
Gandy Donald F.
Guldner Margaret
Gray Thomas B.
Hennessey George J.
Hill Wilhelmina
Hitchcock Howard H.
Howe Gordon A.
Kapell George A.
Lane Archie S.
Lane Helen A.
Lewis Gilbert L.
Lissow Frank C.
Lloyd Irene B.
McCall Harold
Mengerink W. Karl
Nix Irene C.
Payne William A.
Reinagle Evelyn M.
Rich Helen E.
Richards Clay D.
Richards E. Florence
Schmitt LaVancha M.
Steen Dorothy M.
Suhl Elsie M.
Sylvester Harcourt M.
Symons Beatrice
Thomas Herbert B.
Vick Henry H.
Wendt George
Wendt Robert H.
Whelehan J. Donald
Whelehan Walter L.
Wooden Charles W.
Zleres Elmer G.

Irondequoit.

Albiston John A.
Baseman Willard L.
Bayer Wm. Adelbert

Blaesi Alice L.
Bliven George H.
Bloom Cella
Blumenstiel Monroe A.
Brady Vincent
Brennan Arthur J.
Broderick Thomas E.
Burns Gerald G.
Chamberlain Alanson W.
Cherkass Abraham S.
Cochrane Craig P.
Coonrad Edward G.
Cooper John M.
Crouch Frank M.
Davison Dorothy
Dean Charles W.
DeWitt Maude A.
Donovan Harry T.
Ehmel Harry J.
Fox Lloyd B.
Franke Howard W.
Gangross Murea
Gatgens Wm. C.
Gebbie John W.
Genthner Rudolph K.
Gillette Percival W.
Haller Charles F.
Harper Clarence H.
Harris Edith M.
Hennekey Chester B.
Hettig Max A.
Hogan William E.
Hohman Elmer F.
Hohman Louis J.
Irwin Charles R.
Kitzing Harriet E.
Landon Herbert W.
LaRoche Mary E.
Lauterbach Anna M.
Lawler Edward A.
Leary Herbert
Leary L. Edward
Levinson Harry H.
Lusk Mack Fearn
Lyons William G.
McFarlin Elmer H.
McMahon Albert F.
Mann Frederick A.
Marncher George J.
Martin Arthur L.
Maurer Armand
Meisenzahl Arthur J.
Meisenzahl Richard C.
Miceli Anthony
Miller M. Madeline
Morse Clarence E.
Munderback Mazie I.
Muxworthy John F.
Naylon William T.

NOTARIES PUBLIC—Continued

Noble Herbert J.
Nown Catherine
Owenburg Frank Jr.
Partridge Earl A.
Perkins Florence E.
Pritchard Beulah W.
Pritchard Orvis L.
Randall Homer J.
Rayton Herbert C.
Ridderhof Nicholas L.
Rudman Carleton J.
Rumpf Roy R.
Ryan Charles F.

Saul Allen H.
Schilling Laura K.
Schoepfel Elmer J.
Schroedel Walter E.
Schulz Margaret H.
Schy Laura L.
Senke Harold F.
Sheehan Marianna
Sherman Harry E.
Smith Walter F.
Stehle Fred J.
Storms Floyd S.
Taylor Harry C.

Tischer Arthur J.
Titus William S.
Tosch Fred P.
Vinton Joseph E.
Wagner George J.
Wagner Lawrence J.
Walters Frank
Walzer Claude S.
Wegman Albert A.
Weldenborner George A.
Welland Elmer
Wickes Francis C.
Widman Walter J.

Williams Philip O.
Willis J. Allan
Zwick Frederick D.

Sea Breeze P. O.
Allen A. Elbert
Birmingham Albert J.
Beale Evans L.
Curry Willard P.
McGuire Thomas E.
Maurer Clarence J.

POPULATION OF ROCHESTER AND MONROE COUNTY

State Census of 1915 and 1925

United States Census of 1910 and 1920

Wards	1910	1915	1920	1925	Towns.....	1910	1915	1920	1925
Ward 1.....	2,760	1,815	2,113	2,428	Brighton.....	3,998	2,974	2,911	4,584
Ward 2.....	4,583	3,377	3,821	2,924	Chili.....	2,071	2,050	1,780	2,086
Ward 3.....	7,626	6,736	7,900	7,622	Clarkson.....	1,549	1,657	1,403	1,501
Ward 4.....	5,821	5,500	6,065	4,825	Gates.....	4,862	5,498	1,419	2,289
Ward 5.....	10,188	10,560	10,876	9,948	Greece.....	7,777	10,794	3,350	6,805
Ward 6.....	8,300	7,763	8,396	8,138	Hamlin.....	2,184	2,458	1,999	2,251
Ward 7.....	8,240	7,897	8,281	6,868	Henrietta.....	1,972	2,083	1,910	2,127
Ward 8.....	15,291	16,380	16,787	16,161	Irondequoit.....	3,526	4,603	5,123	10,469
Ward 9.....	7,261	7,577	8,444	8,515	Mendon.....	2,754	2,896	2,509	2,736
Ward 10.....	12,064	18,795	28,404	31,669	Ogden.....	3,143	2,800	2,681	3,066
Ward 11.....	12,346	11,489	12,245	13,264	Parma.....	2,954	3,268	2,923	3,258
Ward 12.....	15,566	15,851	17,777	18,033	Penfield.....	2,977	2,967	2,087	3,259
Ward 13.....	5,516	5,530	5,851	5,577	Perinton.....	6,566	7,338	7,799	9,265
Ward 14.....	14,444	14,127	17,268	18,882	Pittsford.....	3,634	4,703	4,614	6,266
Ward 15.....	8,339	9,388	9,505	9,959	Riga.....	1,853	1,840	1,649	1,737
Ward 16.....	10,691	10,989	12,361	10,489	Rochester.....	218,149	248,465	295,750	316,786
Ward 17.....	15,701	19,780	21,681	23,700	Rush.....	2,150	1,578	2,091	2,024
Ward 18.....	17,781	25,280	29,635	33,613	Sweden.....	4,885	4,635	3,984	4,578
Ward 19.....	17,546	22,691	8,402	36,007	Webster.....	3,755	4,389	3,976	4,572
Ward 20.....	10,319	10,634	11,468	11,846	Wheatland.....	2,453	2,314	2,076	2,515
Ward 21.....	1,582	5,416	7,011	8,976					
Ward 22.....	6,184	18,390	12,024	16,578					
Ward 23.....			3,511	4,717					
Ward 24.....			4,924	6,047					
Total.....	218,149	248,465	295,750	316,786	Total.....	283,212	319,310	352,034	392,174

POST OFFICES IN MONROE COUNTY.

Post Office.	Town.	Post Office.	Town.
*Adams Basin.....	Ogden	*Honeoye Falls.....	Mendon
*Arnett.....	Rochester	*Industry.....	Rush
*Beechwood.....	Rochester	*Mendon.....	Mendon
*Brighton.....	Rochester	*Mumford.....	Wheatland
*Brookport.....	Sweden	*North Chili.....	Chili
*Central Av.....	Rochester	*North Greece.....	Greece
*Charlotte.....	Greece	*Penfield.....	Penfield
*Chili.....	Chili	*Pittsford.....	Pittsford
*Churchville.....	Riga	*Point Pleasant.....	Irondequoit
*Clarkson.....	Clarkson	*Rochester.....	Rochester
*Claverhouse.....	Irondequoit	*Rochester Junction.....	Mendon
*Clifton.....	Chili	*Rush.....	Rush
*Cold Water.....	Gates	*Scottsville.....	Wheatland
*Dewey Av.....	Rochester	*Sea Breeze.....	Irondequoit
*East av.....	Rochester	*Spencerport.....	Ogden
*East Rochester.....	Perinton	*Union Hill.....	Webster
*Fairport.....	Perinton	*Walker.....	Hamlin
*Forest Lawn.....	Webster	*Webster.....	Webster
*Garbutt.....	Wheatland	*West Henrietta.....	Henrietta
*Hamlin.....	Hamlin	*West Rush.....	Rush
*Henrietta.....	Henrietta	*West Webster.....	Webster
*Hilton.....	Parma		

*Money Order Offices.

†Discontinued for winter.

‡Station of Rochester

RATES OF POSTAGE

DOMESTIC

First Class.

Letters	2 cents an ounce or fraction
Government postal cards and private mailing cards	1 cent each

Special Delivery Fee (First Class)

In addition to regular postage:

Not over 2 pounds10
Over 2 pounds and less than 10 pounds20
Over 10 pounds25

Postage Due (First Class)

If short one rate, collect one rate	2 cents
If short more than one rate, collect deficient postage, plus 1 cent on each ounce or fraction short paid.	
Business Reply Cards3 cent each
Business Reply Envelopes4 cent each
Apply to Postmaster for permit, as no mailings will be accepted until permit is authorized.	

Second-Class Rates.

Transient rate, 1 cent for each 2 ounces or fraction, irrespective of distance or weight.
For publishers rates apply at Post Office.

Third-Class Rates.

Printed circulars, books, catalogs, merchandise, miscellaneous printed matter (except first and second class) weighing 8 ounces or less.
Regular rate, 1½ cents for 2 ounces or fraction.
Special rate, 1 cent for 2 ounces or fraction.
Includes books, printed of 24 or more pages, seeds, bulbs, plants, cuttings, &c.

Third Class—Pound Rates.

Regular12 cents a pound or fraction
Special8 cents a pound or fraction
Must be in quantities of not less than 20 pounds, or not less than 200 identical pieces for a mailing.
Apply to Postmaster for permit, as no mailings will be accepted until permit is authorized.

Special Handling Service.

Not over 2 pounds 10 cents
Over 2 pounds and less than 10 pounds.. 15 cents
Over 10 pounds 20 cents
This rate gives first-class transportation, but does not include special delivery service.

Special Delivery

For All Mail Other Than First-Class

Not over 2 pounds 15 cents
Over 2 pounds and less than 10 pounds.. 25 cents
Over 10 pounds 35 cents
The above rate gives first-class transportation, plus special delivery service.

Air Mail Rates.

After August 1, 1928, 5 cents for first ounce, ten cents for each additional ounce or fraction thereof.

Registry Rates.

Indemnity not over \$ 50.0015
Over \$ 50.00 less than \$ 100.0020
" 100.00 " " 200.0030
" 200.00 " " 300.0040
" 300.00 " " 400.0050
" 400.00 " " 500.0060
" 500.00 " " 600.0070
" 600.00 " " 700.0080
" 700.00 " " 800.0090
" 800.00 " " 1000.00	\$1.00

REGISTRY RATES.

All registered pieces having a value exceeding \$100 must be registered at the Main Post Office or a Classified Station.

Contract stations cannot accept registered mail exceeding \$100 in value

United States Money Orders

Money Orders, not exceeding \$100 on one order, issued on payment of the following fees are drawn for payment in the United States and its island possessions (Guam, Hawaii, Porto Rico, Tutuila, Samoa and U. S. Virgin Islands) and in Antigua, Bahamas, Barbados, Bermuda, British Guiana, British Honduras, British Virgin Islands, Canada, Canal Zone, Cuba, Dominica, Grenada, Jamaica, Martinique, Montserrat, Nevis, Newfoundland, the Philippine Islands, StKitts, StLucia, StVincent, Trinidad and Tobago

For orders not exceeding \$2.5005	For orders not exceeding \$4018
For orders not exceeding \$507	For orders not exceeding \$6020
For orders not exceeding \$1010	For orders not exceeding \$8022
For orders not exceeding \$2012	For orders not exceeding \$10025

FOREIGN

Prepayment optional, except for registered articles, but on printed matter, commercial papers and samples, postage must be at least partially prepaid

Letters—The domestic rate, two cents for the first ounce and two cents for each additional ounce, applied to the following countries:—Argentina, Bahamas, Barbados, Bermuda, Bolivia, Brazil, British Guiana, British Honduras, Calcos Island, Canada, Cayman Islands, Colombia, Cook Island, Costa Rica, Cuba, Dominican Republic, Dutch West Indies, Ecuador, England, Guatemala, Haiti, Honduras (Republic), Ireland, Jamaica, Leeward Islands, Mexico, Newfoundland, West Indies, New Zealand, Nicaragua, Panama, Paraguay, Peru, Salvador El, Samoa Western (British), Scotland, Spain and Colonies, Tobago, Trinidad, Turks Islands, Uruguay, Wales, Windward Islands

To all other countries, 5 cents for the first ounce and 3 cents for each additional ounce or fraction thereof.

Postal Cards—2 cents each. Reply Postal Cards, 4 cents. Post Cards, 2 cents

Printed Matter—1 cent for each two ounces or fraction. Limit of weight varies

Parcel Post—Merchandise, 14 cents per pound or fraction thereof, except to Colombia, Cuba, Guadeloupe, Haiti, Japan, Panama and Peru, which is 12 cents per pound or fraction thereof. Limit of weight varies in different countries. Certain countries require a transit charge in addition to postage. Packages must be accompanied by a Customs Declaration, blanks for which will be furnished by the Post Office. Packages may be registered, except to Barbados, Great Britain and Ireland, the Netherlands, Uruguay, France and Dutch Guiana. Not mailable from a letter box

International Money Orders—For sums not exceeding \$10, ten cents; for each additional \$10 or fraction, 10 cents to all countries not named in the above United States money order list. The limit of a single order is \$100

PARCEL POST INFORMATION

Parcels weighing eight ounces or less are third class and mailable at the rate of 1½ cents for each two ounces or fraction thereof, except books, catalogs, seeds, plants, bulbs, scions which are subject to postage at the rate of 1 cent for each two ounces or fraction thereof. Parcels weighing more than 8 ounces are mailable at the following pounds rates, a fraction of a pound being considered a full pound.

Weight in pounds	Local	Zones							
		1st Up to 50 miles	2nd 50 to 150 miles	3rd 150 to 300 miles	4th 300 to 600 miles	5th 600 to 1000 miles	6th 1000 to 1400 miles	7th 1400 to 1800 miles	8th Over 1800 miles
1	\$0.07	\$0.07	\$0.07	\$0.08	\$0.08	\$0.09	\$0.10	\$0.12	\$0.13
2	.08	.08	.08	.10	.12	.15	.18	.22	.25
3	.08	.09	.09	.12	.16	.21	.26	.32	.37
4	.09	.10	.10	.14	.20	.27	.34	.42	.49
5	.09	.11	.11	.16	.24	.33	.42	.52	.61
6	.10	.12	.12	.18	.28	.39	.50	.62	.73
7	.10	.13	.13	.20	.32	.45	.58	.72	.85
8	.11	.14	.14	.22	.36	.51	.66	.82	.97
9	.11	.15	.15	.24	.40	.57	.74	.92	1.09
10	.12	.16	.16	.26	.44	.63	.82	1.02	1.21
11	.12	.17	.17	.28	.48	.69	.90	1.12	1.33
12	.13	.18	.18	.30	.52	.75	.98	1.22	1.45
13	.13	.19	.19	.32	.56	.81	1.06	1.32	1.57
14	.14	.20	.20	.34	.60	.87	1.14	1.42	1.69
15	.14	.21	.21	.36	.64	.93	1.22	1.52	1.81
16	.15	.22	.22	.38	.68	.99	1.30	1.62	1.93
17	.15	.23	.23	.40	.72	1.05	1.38	1.72	2.05
18	.16	.24	.24	.42	.76	1.11	1.46	1.82	2.17
19	.16	.25	.25	.44	.80	1.17	1.54	1.92	2.29
20	.17	.26	.26	.46	.84	1.23	1.62	2.02	2.41
21	.17	.27	.27	.48	.88	1.29	1.70	2.12	2.53
22	.18	.28	.28	.50	.92	1.35	1.78	2.22	2.65
23	.18	.29	.29	.52	.96	1.41	1.86	2.32	2.77
24	.19	.30	.30	.54	1.00	1.47	1.94	2.42	2.89
25	.19	.31	.31	.56	1.04	1.53	2.02	2.52	3.01
26	.20	.32	.32	.58	1.08	1.59	2.10	2.62	3.13
27	.20	.33	.33	.60	1.12	1.65	2.18	2.72	3.25
28	.21	.34	.34	.62	1.16	1.71	2.26	2.82	3.37
29	.21	.35	.35	.64	1.20	1.77	2.34	2.92	3.49
30	.22	.36	.36	.66	1.24	1.83	2.42	3.02	3.61
31	.22	.37	.37	.68	1.28	1.89	2.50	3.12	3.73
32	.23	.38	.38	.70	1.32	1.95	2.58	3.22	3.85
33	.23	.39	.39	.72	1.36	2.01	2.66	3.32	3.97
34	.24	.40	.40	.74	1.40	2.07	2.74	3.42	4.09
35	.24	.41	.41	.76	1.44	2.13	2.82	3.52	4.21
36	.25	.42	.42	.78	1.48	2.19	2.90	3.62	4.33
37	.25	.43	.43	.80	1.52	2.25	2.98	3.72	4.45
38	.26	.44	.44	.82	1.56	2.31	3.06	3.82	4.57
39	.26	.45	.45	.84	1.60	2.37	3.14	3.92	4.69
40	.27	.46	.46	.86	1.64	2.43	3.22	4.02	4.81
41	.27	.47	.47	.88	1.68	2.49	3.30	4.12	4.93
42	.28	.48	.48	.90	1.72	2.55	3.38	4.22	5.05
43	.28	.49	.49	.92	1.76	2.61	3.46	4.32	5.17
44	.29	.50	.50	.94	1.80	2.67	3.54	4.42	5.29
45	.29	.51	.51	.96	1.84	2.73	3.62	4.52	5.41
46	.30	.52	.52	.98	1.88	2.79	3.70	4.62	5.53
47	.30	.53	.53	1.00	1.92	2.85	3.78	4.72	5.65
48	.31	.54	.54	1.02	1.96	2.91	3.86	4.82	5.77
49	.31	.55	.55	1.04	2.00	2.97	3.94	4.92	5.89
50	.32	.56	.56	1.06	2.04	3.03	4.02	5.02	6.01
51	.32	.57	.57	1.08					
52	.33	.58	.58	1.10					
53	.33	.59	.59	1.12					
54	.34	.60	.60	1.14					
55	.34	.61	.61	1.16					
56	.35	.62	.62	1.18					
57	.35	.63	.63	1.20					
58	.36	.64	.64	1.22					
59	.36	.65	.65	1.24					
60	.37	.66	.66	1.26					
61	.37	.67	.67	1.28					
62	.38	.68	.68	1.30					
63	.38	.69	.69	1.32					
64	.39	.70	.70	1.34					
65	.39	.71	.71	1.36					
66	.40	.72	.72	1.38					
67	.40	.73	.73	1.40					
68	.41	.74	.74	1.42					
69	.41	.75	.75	1.44					
70	.42	.76	.76	1.46					

The local rate is applicable to parcels intended for delivery at the office of mailing or on a rural route starting therefrom.

Everything above 8 oz. except 1st and 2d class matter mailed by publishers is 4th class matter and is subject to the zone rates plus a surcharge of 2 cents on each parcel.

POWER OF ADVERTISING

The **City Directory** is the power that generates information for the buyer that he may know who deals in the product he wishes to purchase. If your business is not classified properly, and a display advertisement arranged to describe your business, how can you expect the buyer to trade with you.

ADVERTISING is the foundation upon which successful businesses are built. You must apply this to your own particular business.

ADVERTISING is the power of an idea multiplied.

Rates Upon Application

OUR SERVICE CANNOT BE EXCELLED

SAMPSON & MURDOCK CO., Inc.

Mr. Manufacturer

Are you aware that a copy of the Rochester City Directory is sent to Directory Libraries all over the country, where it will be consulted by thousands during the year? Would it not be a benefit if you were well represented therein?

SAMPSON & MURDOCK CO., Inc.

Publishers

729 POWERS BUILDING ROCHESTER, N. Y.

REFERENCE DEPARTMENT



Where more complete information than is possible to give under the classified listings is assembled for the convenience of buyers. It is a catalog of services offered by leading business interests of the community and is the logical place to look for specific information concerning them.

18

ROCHESTER [1930] SUBURBAN

WILLIAM S. RICE PRODUCTS

Designed and manufactured by an organization which has for forty years made a study of posture garments which correct or prevent abnormal conditions.

Trusses, Abdominal Supports,
Seamless Elastic Hosiery,
Shoulder Braces, Arch
Supports (Dr. Scholl's and
Jungs Arch Braces)

Health-Way Corsets for every
type of figure. Corsets, Corsettes,
Brassieres, Combinations, Wrap
Arounds, Athletic Girdles, Reduc-
ing, Maternity and Surgical Corsets.

WM. S. RICE, INC.

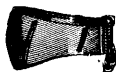
136 CLINTON AVENUE, SOUTH, ROCHESTER, N. Y.

— ESTABLISHED 1857 —

GEORGE R. FULLER COMPANY

Manufacture and Fit

TRUSSES — ELASTIC HOSIERY — ABDOMINAL BELTS
ARTIFICIAL LIMBS — DEFORMITY APPLIANCES — ETC.



Experts in Attendance

Private Fitting Rooms



93 CLINTON AVE. SOUTH

ROCHESTER, N. Y.

Phone Stone 4715

J. G. IDEMAN

AUCTIONEER AND APPRAISER

My Knowledge of Values Your Protection

Real Estate and Merchandise Broker

Office, 519 POWERS BLDG., ROCHESTER

Phone MAIN 1708

Rochester City Guide

The "STREET FINDER"

(Pocket Size)

Giving the name, location and intersecting number of all the streets and avenues, and telling how to reach them by trolley.

With much other valuable information, and a new, convenient sized map of the city.

Twenty-five Cents

AT ALL LEADING NEWSDEALERS



HUDSON AND ESSEX MOTOR CARS



CERTIFIED USED CARS

Members
N. A. D. A.
R. A. D. A.

ALLING & MILES
INCORPORATED
82 STONE STREET

Telephone
STONE 2537

Gallagher Motor Co., Inc.

DISTRIBUTORS OF

MOTOR

77-87 Monroe Avenue
Stone 3030



CARS

Service Station
54 Howell Street

— ERSKINE —

GARVIN CHEVROLET CORP.

for Economical Transportation

Sales



Service

A-1 Service
765 MAIN ST. W.

Good Used Cars
Phone Genesee 6660

GEORGE W. HENNER

Distributor

Oldsmobile Six
Viking V-Type Eight

Sales and Service

28-30 S. UNION STREET - STONE 1877

Automobiles

20

ROCHESTER [1930] SUBURBAN

THOMAS J. NORTHWAY, Inc.

*Automobiles, Accessories, Electric Refrigeration
and Radio*

Reo



Cars

REO SPEEDWAGONS

100 EXCHANGE ST.

JORDAN DISTRIBUTORS, INC.

OF
ROCHESTER

Jordan Motor Cars

SALES AND SERVICE

245-247 EAST AVE. Telephones Stone 2880—2881

SARGENT-BAKER, INC.

Distributors

Oakland and Pontiac Automobiles

29-37 S. UNION STREET

STONE 25-26-27

SCHOEN BROS.

SALES



SERVICE

68 GENESEE STREET .. GENESEE 446

C. M. AMAN

Garage

Goodrich Tires and Tubes

General Repairing

Gasoline and Oils

Rochester Auto Club Service

Exide Batteries

Towing

2117 RIDGE ROAD

Bus. Phone Culver 2239

Res. Phone Culver 4585-M

WE TAKE THE DENT OUT OF ACCIDENT!

*Auto Radiator, Fender and Body Work**Duco Finishing, Trim and Top Work*

WINDSHIELD AND BODY GLASS

Open 7 A. M.

Close 6.30 P. M.

THE SANDERS CO.

16-20 WARD STREET

- ROCHESTER, N. Y.

Phone Main 2456

Delivery Service

TAXI 35c TAXI

MAIN 211 MAIN

GREEN TAXICAB CO.

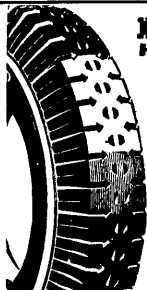
(BROKERS)

SHERLEY SPENCER, President

PER HOUR**\$1.50**PER HOUR

MAIN OFFICE

- ERIE RAILROAD STATION



INDIA
HEAVY
SERVICE
TIRE
for Buses
and Trucks

RAITHEL'S

334 EAST AVE.

AT LAWRENCE ST.

Expert Tire Repairing

INDIA TIRES

FAMOUS FOR QUALITY

Awnings and Tents

22

ROCHESTER [1930] SUBURBAN

BICKFORD BROS. CO.

Established 1879

Walter W. Bickford, *President*

PROPRIETORS

ROCHESTER AWNING & TENT WORKS**340 MONROE AVENUE****AWNINGS**

Tents, Flags, Decorations, Camping Outfits
Canopies, Crash, Tables, Chairs, Etc.

Phone for Estimates

MONROE } 714
715

E. A. LANDBERG

B. C. COE

BRIGHTON AWNING & TENT CO.*Canopies and Tents for All Occasions*

IF ITS MADE OF CANVAS, WE MAKE IT

Estimates Furnished

ELMWOOD AVE., near CLINTON AVE. SOUTH

Phone Monroe 131

BRIGHTON STATION

ROCHESTER, N. Y.

MR. BUSINESS MAN!**DON'T USE AN OLD DIRECTORY**

This Directory is issued ANNUALLY. No other medium in the world gives the information contained herein, therefore it is CONSULTED DAILY FOR TWELVE MONTHS until a new edition is issued.

What better medium to gain
publicity for your advertisement?

L. F. ROTHSCHILD & Co.

Members New York Stock Exchange

Lincoln Alliance Bank Bldg.

STOCK DEPT.

Messrs. Bodell and Young, Managers

INVESTMENT DEPT.

Mr. Crawford McChesney, Manager

Telephone Stone 1341

DIRECT PRIVATE WIRE TO NEW YORK



Main Office 120 Broadway, New York

Smith, Graham & Rockwell

C. W. WEIS, Jr. and T. C. PARSONS, Resident Partners

BROKERS

Members of New York Stock Exchange

SAGAMORE HOTEL,

115 EAST AVENUE

Telephone Stone 640

Phone Main 994 & 995

H. B. DENNISON & CO.

**All Unlisted and Local Stocks and Bonds
Bought - Sold - Quoted**

LISTED CANADIAN MINING STOCKS BOARD ROOM SERVICE

MEMBERS OF BUFFALO STOCK EXCHANGE

Direct Private Wire to BUFFALO and TORONTO

405-406 Central Trust Bldg., 25 E. Main St.
ROCHESTER, N. Y.

Bankers and Brokers

24

ROCHESTER [1930] SUBURBAN

F. T. Sage

C. J. Wolcott

S. C. Steele

D. S. Ratty

Sage, Wolcott & Steele

Investment Securities

1002-1014 Lincoln-Alliance Bank Building

STONE 351

ARTHUR W. DAINARD

PETER K. KATSAMPES

DAINARD & KATSAMPES

INCORPORATED

INVESTMENT SECURITIES

206-207 WILDER BUILDING

ROCHESTER, N. Y.

TELEPHONE MAIN 400

William W. Hibbard

James G. Palmer

John H. Kitchen

George D. B. Bonbright

E. Clarke Ingraham



Hibbard, Palmer & Kitchen

100 Powers Building

Branch, 130 East Avenue

MEMBERS OF
NEW YORK STOCK EXCHANGE

PHONE MAIN 4830

Schoellkopf, Hutton and Pomeroy, Inc.

GORDON R. RUSSELL, Manager

INVESTMENT SECURITIES

Members of Buffalo Stock Exchange

1231-1239 LINCOLN-ALLIANCE BANK BUILDING

183 MAIN STREET, E.**STONE 3550***More than a Decade of Dependable Investment Counsel***Allan R. Palmer Company**

INCORPORATED



▲ ELEVENTH FLOOR ▲

COMMERCE BUILDING

ROCHESTER, N.Y.

Stone 76

Stone 77

H. J. LUDINGTON & COMPANY**STOCKS—BONDS****SECURITIES FOR INVESTMENT**

We are always glad to offer impartial advice on investment matters, based on long experience and complete information facilities. For information

1027-1032 Genesee Valley Trust Bldg.**ROCHESTER, N. Y.**

THE Knowledge of "where to buy" is as important as where to sell goods.

Consult the City Directory

CENTRAL TRUST CO.

ROCHESTER, N. Y.

Central Trust Building

25 MAIN STREET, EAST

Brighton Branch: 1806 East Avenue

Office Hours: from 10 A.M. to 3 P.M.

Saturdays: Close at 12 M.

**Capital, Surplus and Undivided Profits over
\$1,600,000.00**

Officers :

JOHN H. GREGORY, Pres.

WM. PITKIN, Vice-Pres.

LOUIS F. STUPP, Vice-Pres.

JOHN A. MURRAY, Vice-Pres.

JOHN H. RAUSCH, Asst. Vice-Pres.

HORACE S. JOHNSTON, Asst. Vice-Pres.

RICHARD C. MEISENZAHN, Sec.

HOMER D. KLUMPP, Asst. Sec.

THOMAS J. SERCU, Trust Officer

C. J. KITZEL, Asst. Trust Officer

HENRY H. HESSELINK, Mgr. Brighton Br.

Directors :

CHARLES E. HOYT

W. H. MATHEWS

WILLIAM PITKIN

JOHN P. BOWMAN

JOHN H. GREGORY

MORTIMER R. MILLER

FRANTZ HAVERSTICK

BUELL P. MILLS

MAX L. HOLTZ

LOUIS F. STUPP

ESTEN A. FLETCHER

JOHN A. MURRAY

FRANK J. SMITH

Foreign Drafts Issued on all parts of the world. Letters of Credit and Travelers' Checks available for Foreign Travel. Interest Allowed on Special Deposits. Acts as Executor of wills, Administrator of Estates, Trustee under corporate and individual trust agreements.

We invite the Accounts of Corporations, Firms and Individuals, and are prepared to furnish such depositors with business facilities consistent with their balances and standing

We have provided a separate department for the use of women and respectfully invite their accounts.

SAFE DEPOSIT BOXES

For Rent From \$3.00 Per Year Up

MAIN OFFICE OR BRIGHTON BRANCH

*A Rochester Bank
for
A Greater
Rochester*



*Member
of the
Federal Reserve
System*

OFFICERS

HARRY C. STEVENSON

Chairman of the Board

MEYER JACOBSTEIN
President

THOMAS R. DWYER
Executive Vice-President

GEORGE C. LENNOX
Vice-President

OGDEN BUTLER
Cashier and Trust Officer

C. B. ACHILLES
Assistant Cashier

FRANK C. LEAPER
Auditor

DIRECTORS

WM. S. ADDISON
Pres. Addison Lithographing Co.

S. RAE HICKOK
Pres. Hickok Mfg. Co.

CHARLES L. CADLE
Gen. Mgr. Roch. Gas & Elec. Co.

W. J. HUMPHREY
*Pres. Wyoming Co. Nat'l Bank
of Warsaw*

THOMAS R. DWYER
Executive Vice-President

MEYER JACOBSTEIN
President

LOUIS S. FOULKES
Pres. & Treas. Indian Splint Co.

WM. E. MALONEY
Dist. Mgr. Grinnell Co., Inc.

ALFONSO GIOIA
Pres. A. Gioia & Bro.

A. H. NEISNER
Pres. Neisner Bros., Inc.

LYELL T. HALLETT
*Gen. Manager., Rochester Branch,
Beech-Nut Packing Co.*

FRED J. ODENBACH
Pres. Odenbach Co.

OTTO R. ROHR
Pres. Stecher Lithographic Co.

HENRY C. STEBBINS
*Vice-Pres. Morris Plan Bank
of Rochester*

IRVING W. STEELE
I. W. Steele & Co.

HENRY M. STERN
Michaels, Stern & Co.

HARRY C. STEVENSON
Pres. Roch. Folding Box Co.

THOS. M. STEWART
*Com'l Sales Mgr. Taylor In-
strument Co's*

Capital and Surplus Over \$2,000,000.00

**THE FIRST NATIONAL
BANK & TRUST CO.**
of Rochester

41-45 State Street

Genesee Valley Trust Company

21 Exchange St. Rochester, N. Y.

RESOURCES OVER \$26,000,000

OFFICERS

WILLIAM J. SIMPSON	-	-	-	-	-	-	-	President
ALEXANDER T. SIMPSON	-	-	-	-	-	-	-	Vice-President
JOHN W. JARDINE	-	-	-	-	-	-	-	Vice-President
JOHN P. DAY	-	-	-	-	-	-	-	Vice President
GEORGE E. VARCOE	-	-	-	-	-	-	-	Vice-President
W. W. STEELE	-	-	-	-	-	-	-	Asst. Vice President
HOWARD W. MATTHEWS	-	-	-	-	-	-	-	Secretary
STEPHEN E. GODDEN	-	-	-	-	-	-	-	Treasurer
JOSEPH P. COLLINS	-	-	-	-	-	-	-	Trust Officer
ALISTER G. LATIMER	-	-	-	-	-	-	-	Asst. Secretary
T. CHESTER MEISCH	-	-	-	-	-	-	-	Asst. Secretary
DAVID B. LITTLE	-	-	-	-	-	-	-	Asst. Secretary
EDMUND A. RANDALL	-	-	-	-	-	-	-	Auditor

We desire individual and commercial checking accounts, pay interest on special deposits, loan money on approved collateral and act as executor, administrator, guardian, agent or attorney in all fiduciary capacities relating to trusts of any nature.

**SAFE DEPOSIT BOXES IN FIRE AND
BURGLAR PROOF ARMOR VAULTS**

BOARD OF DIRECTORS

Innis P. Allen, Treasurer C. P. Ford Co., Inc.	Pike P. Meade, Secretary and Treasurer, Symington Co. Treasurer, Gould Coupler Co.
Theron E. Bastian, President Bastian Bros. Co., Inc.	James Moore, President Snider Packing Corporation
Charles C. Beahan, President, Crouch & Beahan Co. Vice-Pres., Mechanics Savings Bank	Thomas J. Northway, President, Thomas J. Northway, Inc.
George C. Buell, President, George C. Buell & Co.	William J. Simpson, President
Kendall B. Castle Attorney	Alexander T. Simpson, Vice-President
George H. Clark, Director, Eastman Kodak Co. President, Cochrane-Bly Co.	Charles M. Thoms, Real Estate
W. Dewey Crittenden, President and Treas., F. & C. Crittenden Co.	Kenneth C. Townson, Director, Sibley, Lindsay & Curr Co., Director, Rochester Dental Dispensary
William B. Hale, President, Mechanics Savings Bank President, Lawyers' Co-operative Publishing Co. President, E. R. Andrews Printing Co.	Lewis S. West, Vice-Pres. and Gen. Mgr. Merchants Despatch Transportation Co.
Carl S. Hallauer Bausch & Lomb Optical Co. Vice-Pres. Sagamore Hotel Co.	Ernest C. Whitbeck, Attorney
Morris D. Knapp, Trustee, Mechanics Savings Bank Director, Richardson Corporation	Henry T. Williams, Physician

LINCOLN-ALLIANCE BANK AND TRUST COMPANY

MEMBER FEDERAL RESERVE SYSTEM

Capital	- - - - -	\$2,000,000.00
Surplus and Undivided Profits	- - - - -	4,000,000.00

MAIN OFFICE

LINCOLN-ALLIANCE BANK BUILDING
MAIN STREET EAST CORNER STONE STREET

LINCOLN OFFICE, 33 Exchange St.

LAKE AVENUE OFFICE, Lake Ave., cor. Ridgeway Ave.

WEST END OFFICE, 886 Main St. W., at Genesee and Brown

EAST END OFFICE, Main St. E., cor. N. Goodman St.

MONROE AVENUE OFFICE, 560 Monroe Ave., cor S. Goodman

PORTLAND-CLIFFORD OFFICE, Portland cor. Clifford Ave.

Authorized by Law

TO ACT AS ADMINISTRATOR, EXECUTOR,
TRUSTEE, GUARDIAN, REGISTRAR AND
TRANSFER AGENT OF STOCKS AND BONDS

OFFICERS

PRESIDENT

Raymond N. Ball

VICE-PRESIDENTS

Raymond F. Leinen
Bernard J. Shaw
Thomas R. Baker

Edward M. Weingartner
Frederick D. Whitney
Edward F. Pillow

Arthur J. Meisenzahl
William G. Watson
Harold C. Townson

SECRETARY

Raymond J. White

AUDITOR

Roy E. Miller

ASSISTANT SECRETARIES

Edmund J. Tuety
William B. Vaisey
Arthur B. Weston

Clarence S. Greene
Lincoln Doumaux
Roy B. Combs

Richard A. Sweeney
Clarence E. Marsh
Charles W. MacEllven

TRUST OFFICER

William A. Rose

ASST. TRUST OFFICER

Raymond H. Schlegel

INVESTMENT DEPARTMENT

Frederick D. Whitney

MANAGER FOREIGN DEPARTMENT

H. W. C. Glienke

DIRECTORS

Raymond N. Ball
President

Mortimer Adler
Joseph T. Alling
Henry Barnard
Edward Bausch
James C. Dryer
Albert B. Eastwood

Gustav Erbe
Thomas W. Finucane
Frank E. Gannett
James E. Gleason
Fred C. Goodwin
Fred H. Gordon
Edward A. Halbleib
Thomas J. Hargrave
Sol Heumann

Walter S. Hubbell
Edward G. Miner
Rush Rhees
George W. Robeson
Herman Russell
Rudolph Speth
George W. Todd
Douglas C. Townson
Herbert J. Winn

ROCHESTER TRUST and Safe Deposit COMPANY

Main Street West and Exchange

Capital and Surplus

\$4,250,000



Resources

\$50,000,000

Forty-two Years Experience

Complete Banking and Trust Service for Individuals and Corporations
Commercial, Collateral and Mortgage Loans—Securities Information
— All Trust Functions — Safe Deposit Boxes and Storage Vaults.

OFFICERS

Robert C. Watson President	Willard I. Luescher Asst. Vice President
John Craig Powers Vice Pres. and Chr. Ex. Com.	Harry L. Edgerton Asst. Secretary
Edward Bausch Vice President	Joseph B. Hoyt, Asst. Secretary
Taylor D. Bidwell Vice Pres. and Secretary	Mgr. Securities Dept.
Leigh H. Pierson Trust Officer	Harry W. Sage Asst. Secretary
Edward L. Williams Treasurer	Fay E. Wright Asst. Secretary
Alfred J. Leggett Asst. Vice President	Arthur E. Albright Supt. of Vaults

DIRECTORS

Lucius W. Robinson	Joseph Michaels
Robert C. Watson	Gustav Erbe
Thomas H. Chew	Wm. A. E. Drescher
Edward G. Miner	Herbert J. Winn
R. Andrew Hamilton	Joseph Farley
Wm. A. Hubbard, Jr.	W. Roy McCanne
Frank T. Sage	Taylor D. Bidwell
William C. Barry	Frederick S. Miller
George W. Robeson	Samuel E. Durand
George H. Hawks	William F. Strang
John Craig Powers	Vincent S. Bennett
Edward Bausch	Oscar H. Pieper



MAIN STREET WEST AND EXCHANGE

Rochester's First Trust Company—Operating under Perpetual Charter

Security Trust Company

OF ROCHESTER

**Main St. East and
Water St. South**

Capital and Surplus

\$3,400,000

Deposits

\$28,000,000



OFFICERS

JAMES S. WATSON	President	DAVID GALES	Ass't Secretary
JULIUS M. WILE	Vice-President	EARL G. HOCK	Ass't Secretary
EDWARD HARRIS	Vice-President	WILLIAM H. STACKEL, Vice-Pres. & Trust Officer	
JESSE W. LINDSAY	Vice-President	GRACE E. HOWIE	Ass't Trust Officer
CARL S. POTTER	Vice-Pres. & Secretary	G. MORTON MINOT	Ass't Trust Officer
GEORGE F. STONE	Treasurer	BENJAMIN E. LULL	Ass't. Trust Officer
HARVEY W. MILLER	Ass't Secretary	SEWARD H. CASE	Ass't Trust Officer

TRUSTEES

JAMES S. WATSON	MORLEY A. STERN	THOMAS G. SPENCER
RUFUS K. DRYER	DANIEL M. BEACH	M. H. EISENHART
EDWARD HARRIS	F. HARPER SIBLEY	CARL S. POTTER
JULIUS M. WILE	FRANK W. LOVEJOY	WILLIAM H. STACKEL
CARL F. LOMB	ERNEST L. WOODWARD	RAYMOND N. BALL
CHARLES STERN	JESSE W. LINDSAY	WALTER L. TODD
J. WARREN CUTLER	WALTER S. HUBBELL	GEORGE H. CLARK
P. V. CRITTENDEN		WESLEY M. ANGLE

Interest Paid on Deposits.

Special attention given to handling Estates and Trusts.

Money to Loan on Approved Securities and Bond and Mortgage.

Designated by Superintendent of Banking Department as Depositary for Reserve Funds of State Banks.

Checks on Foreign Cities, Letters of Credit and Travelers Checks issued.

WOMEN'S DEPARTMENT—Special and separate accommodations with all modern facilities.

Safe Deposit Vaults for Rent in our Electrically Protected Burglar-Proof Vault. Valuables in Trunks or Packages cared for. Moderate charges.

UNION TRUST COMPANY

ROCHESTER, NEW YORK

Capital and Surplus Over \$8,000,000

Nine Convenient, Friendly Offices

EVERY BANKING SERVICE

OFFICERS

President

FREDERICK W. ZOLLER

BANK OF ROCHESTER OFFICE

30 State Street

Vice-President

ARTHUR B. CLARK

Assistant Vice-Presidents

CHESTER J. SMITH

ALANSON W. CHAMBERLAIN

Assistant Secretaries

EDWIN W. BURTON

BENJAMIN F. SAWIN

EAST AVENUE OFFICE

East Ave. at Main Street

Assistant Vice-President

EDWARD J. MEYER

Assistant Secretaries

WILLIAM J. HAUSER

CHARLES BROUMOWSKY

DEPARTMENT OF TRAVEL SERVICE

30 East Avenue

KARL J. PFISTER, *Manager*

JOHN F. BRAAM

Vice-Pres. and Asst. Treas.
General Railway Signal Co.

SELDEN S. BROWN
Attorney

J. ALLEN FARLEY

Treas. E. P. Reed & Co.

THOMAS W. FINUCANE
Treas. Thomas W. Finucane Corp.

JOSEPH G. FISCHER
Vice-Pres. The Marine Trust
Co. of Buffalo, N. Y.

WM. W. FOSTER
Vice-Pres. and Comptroller,
Union Trust Company

JAMES F. HAMILTON
Pres. American Airways, Inc.
New York City

MARTIN B. HOYT
Treas. The Case-Hoyt Corp.

JOHN L. KEENAN
Franklin Institute

MAIN OFFICE

19 Main Street, West

Vice-Presidents

WILLIAM W. FOSTER *Comptroller*

CHARLES H. MOORE

DELOSS M. ROSE, *Secretary*

CHARLES WINSLOW SMITH

Treasurer

M. G. PALMATEER

Assistant Vice-Presidents

CHARLES H. ESHELMAN

CARL R. SNIDER

Auditor and Assistant Treasurer

CARL J. SWEENEY

Assistant Secretaries

JOHN W. MALEENEY

ELMER B. MILLIMAN

EDWARD R. MURPHY

WM. J. VOLZ

Assistant Auditor

HENRY P. SCHLENKER

TRUST DEPARTMENT

Vice-President and Trust Officer

CHARLES H. MOORE

Assistant Trust Officers

R. REED GEORGE

NELSON E. LENGEMAN

LOUISE A. SCHOFIELD

WILLIAM C. WAIT

INVESTMENT DEPARTMENT

Assistant Vice-President

GLENN H. EWELL

Assistant Treasurer

ROBERT F. JONES

Assistant Treasurer

CHAS. J. GRATE

DIRECTORS

WILLIAM T. McCAFFREY
Pres. Lincoln National Bank &
Trust Company, Syracuse, N. Y.

J. E. McKELVEY

Director, Richardson Corp.

CHARLES H. MOORE

Vice-Pres. and Trust Officer,

Union Trust Company

ALBERT S. NEWELL
Vice-Pres. Union Trust Company

GEORGE F. RAND

Pres. The Marine Trust Co.

Buffalo, N. Y.

IRVING S. ROBESON

Treas. Robeson-Rochester Corp.

JOHN C. RODENBECK

Vice-Pres. Union Trust Company

CHARLES P. SCHLEGEL

Pres. Schlegel Manufacturing Co.

J. F. SCHOELLKOPF, JR.

Vice-Pres. Schoellkopf, Hutton &

Pomeroy, Inc., Buffalo, N. Y.

CHARLES WINSLOW SMITH

Treas. Sherwood Shoe Co.

MERCHANTS OFFICE

Main Street E and South Ave.

Vice-Presidents

JOHN C. RODENBECK

ALBERT S. NEWELL

Assistant Secretary

GROVER C. BRADSTREET

OTHER OFFICES

CLIFFORD-JOSEPH OFFICE

A. JOSEPH LONDON, *Ass't Sec'y*
Manager

CHARLOTTE OFFICE

JOHN F. KELEHER
Manager

LYELL-SARATOGA OFFICE

ROBERT K. FAULKNER
Manager

NORTH-HUDSON OFFICE

CHARLES H. CLOSEN
Manager

CULVER OFFICE

AVERY S. GILBERT, *Ass't Sec'y*
Manager

ADOLPH STUBER

General Mgr., Camera Works,
Eastman Kodak Co.

ARTHUR E. SUTHERLAND
Sutherland & Dwyer, Attorneys

GEORGE L. SWAN

Pres. Gorsline & Swan

Construction Co.

FRED K. THOMPSON

Pres. Cramer-Force Co.

LIBANUS M. TODD

Pres. The Todd Co. Inc.

HOWARD O. WALLACE

Babcock, Schoellkopf & Co.

Nunda, N. Y.

J. FOSTER WARNER

Architect

JAMES L. WHITLEY

Attorney

LEWIS S. WHITMORE

Vice-Pres. Whitmore, Rauber &

Vicinus

FREDERICK W. ZOLLER

Pres. Union Trust Company

THE EAST SIDE SAVINGS BANK

OF ROCHESTER

CORNER MAIN STREET EAST AND CLINTON AVENUE SOUTH
ROCHESTER, N. Y.

INCORPORATED 1869

OFFICERS:

<i>President,</i>	-	-	-	-	-	W. HENRY MATHEWS
<i>Vice-President,</i>	-	-	-	-	-	WILLIAM BAUSCH
<i>Vice-President,</i>	-	-	-	-	-	WILLIAM H. DUNN
<i>Secretary and Treasurer,</i>	-	-	-	-	-	AUSTIN C. JACKSON
<i>Assistant Secretary,</i>	-	-	-	-	-	HENRY B. ALLEN
<i>Assistant Treasurer,</i>	-	-	-	-	-	JOHN W. F. SWANTON
<i>Cashier,</i>	-	-	-	-	-	EDWARD L. GOETZMAN
<i>Attorney,</i>	-	-	-	-	-	HAMILTON C. GRISWOLD

TRUSTEES

W. Henry Mathews	William H. Dunn
Austin C. Jackson	John H. Engert
William Bausch	Frederick A. Sherwood
Frank A. Brownell	Leon Stern
P. V. C. Jackson	

MONEY DEPOSITED during the first three business days of any month will draw interest from the first of that month, if left until the end of the quarter. The quarters begin with the first days of March, June, September and December. Deposits may be withdrawn on the last three business days of a quarterly period without loss of interest.

THE RATE OF INTEREST is determined at the close of each six months from the actual earnings for that period and at the highest rate which such earnings will in the best judgment of the Board of Trustees allow.

INTEREST IS CREDITED to accounts December 1st and June 1st, and if not withdrawn will bear interest as a deposit.

THE PASS BOOK must be presented for depositing or withdrawing.

MONEY TO LOAN on bond and mortgage.

DEPOSITS OF ONE DOLLAR or of any larger sum, not exceeding in the aggregate Seven Thousand Five Hundred Dollars from any one depositor may be received, exclusive of interest.

THE BANK is open daily, holidays excepted, from 9 A.M. to 3 P.M. except Saturdays, from 9 A.M. to 12 o'clock noon. Open Monday evenings from 7.00 to 9.00 and Saturday evenings from 5.00 to 9.00 to receive deposits.

**SAFE DEPOSIT BOXES IN FIRE AND BURGLAR PROOF
VAULTS \$3.00 PER YEAR AND UPWARDS**

MONROE COUNTY SAVINGS BANK

INCORPORATED 1850

35 State Street, Rochester, N. Y.**Main-Gibbs Branch: 420 MAIN STREET EAST****OFFICERS**

RUFUS K. DRYER.....	President
EDWARD BAUSCH.....	Vice-President
P. V. CRITTENDEN.....	Vice-President
WILLIAM C. BARRY.....	Vice-President
GEORGE D. WHEDON.....	Secretary and Treasurer
WILLIAM B. LEE.....	Attorney
H. WILBUR WILCOX.....	Cashier
FRANK B. McLAUGHLIN.....	Comptroller
A. DEWEY BACON.....	Asst. Secretary
WALTER H. COUCHMAN.....	Asst. Secretary
FRANK E. DONNELLY.....	Asst. Secretary
JOSEPH G. KUNZ.....	Asst. Secretary
HAROLD F. LEDERMAN.....	Asst. Secretary
FRANK T. TAYLOR.....	Asst. Secretary

TRUSTEES

RUFUS K. DRYER	Pres. Monroe County Savings Bank
WILLIAM B. LEE	Attorney
P. V. CRITTENDEN	Brewster, Crittenden & Co.
EDWARD BAUSCH	Bausch & Lomb Optical Co.
JOSEPH MICHAELS	Michaels, Stern & Co.
MARTIN F. BRISTOL	
WILLIAM A. HUBBARD, Jr.	Hubbard, Eldredge & Miller, Inc.
WILLIAM C. BARRY	Vice Pres. Monroe County Savings Bank
WILLIAM V. HAMILTON	President First National Bank, Caledonia, N. Y.
W. OSBORNE ASHLEY	Egbert F. Ashley Co.
CHARLES F. WRAY	Henry Wray & Son, Inc.



J. ALLEN FARLEY, E. P. Reed & Co.

MARTIN B. HOYT, The Case-Hoyt Corporation

GEORGE D. WHEDON, Sec'y-Treas. Monroe County Savings Bank

ROCHESTER SAVINGS BANK

(Incorporated 1831)

TWO OFFICES



West Main Street Office
47 WEST MAIN STREET



Franklin Street Office
40 FRANKLIN STREET

Resources over \$64,000,000
More than 98,693 depositors

Officers

E. ALLEN STEBBINS	PRESIDENT
JAMES S. WATSON	VICE-PRESIDENT
EDWARD HARRIS	VICE-PRES. AND ATT'Y
CHARLES F. TURTON	VICE-PRESIDENT
WILLIAM O. TERRY	SEC. AND TREAS.
FRANK L. NIED	ASS'T SECRETARY
CHARLES H. GLOVER	ASS'T TREASURER
WILLIAM D. NIVEN	ASS'T SECRETARY
JOHN C. HOSKING	ASS'T SECRETARY
GEORGE D. OLIVER	CASHIER
ARTHUR H. LAUTERBACH	ASS'T SECRETARY

Trustees

JAMES S. WATSON	E. ALLEN STEBBINS
HIRAM W. SIBLEY	HERBERT J. WINN
ERICKSON PERKINS	WALTER L. TODD
THOMAS W. FINUCANE	M. HERBERT EISENHART
J. CRAIG POWERS	CHARLES F. TURTON
WILLIAM A. E. DRESCHER	WILLIAM O. TERRY
EDWARD HARRIS	F. HARPER SIBLEY
DANIEL M. BEACH	C. SCHUYLER DAVIS

ALBERT A. HOPEMAN

SAFE DEPOSIT BOXES FOR RENT FROM \$3.00 PER YEAR UP
AT THE FRANKLIN STREET OFFICE

The Mechanics Savings Bank

18 EXCHANGE STREET

Branch, 89-91 EAST AVENUE

Gas and Electric Building

Rochester, N. Y.

Incorporated 1867

OFFICERS

William B. Hale	-	-	-	-	-	-	President
James H. Boucher	-	-	-	-	-	-	Vice-President
Charles C. Beahan	-	-	-	-	-	-	Vice-President
Wendell J. Curtis	-	-	-	-	-	-	Secretary and Treasurer
George Wendt	-	-	-	-	-	-	Assistant Secretary
Alexander M. Kesselring	-	-	-	-	-	-	Assistant Secretary
Eugene J. Bodette	-	-	-	-	-	-	Assistant Secretary
John S. Bronk	-	-	-	-	-	-	Attorney

TRUSTEES

JAMES H. BOUCHER	JAMES C. CLEMENTS	FREDERICK S. MILLER
WENDELL J. CURTIS	WILMOT CASTLE	LIBANUS M. TODD
WILLIAM KARLE	JOHN S. BRONK	EDWARD A. HALBLEIB
WILLIAM B. HALE	MORRIS D. KNAPP	GILBERT C. J. McCURDY
CHARLES C. BEAHAN	GEORGE W. ROBESON	HERBERT W. BRAMLEY

THE Knowledge of "where to buy" is as important as where to sell goods.

Consult the City Directory

OZALID PRINTS**DRAFTING SUPPLIES****CITY BLUE PRINT CO.****66 CLINTON AVE. SOUTH****Opposite Victoria Theatre****MAIN 3265****W. F. SCHOCK****Blue Prints****Photo Prints****Primulin Prints****Tizian Oil Colors****DRAFTING ROOM EQUIPMENT*****Engineers' Supplies******Artists' Materials*****H. H. SULLIVAN, Inc.*****Technical Merchandise*****67 SOUTH AVE.****ROCHESTER, N. Y.****STONE 550****Branches—BUFFALO—SYRACUSE—BOSTON**

Building Movers

Building Supplies

38

ROCHESTER [1930] SUBURBAN

BENJAMIN J. CLEARMONT

ROCHESTER BUILDING MOVERS

COMPLETE MODERN EQUIPMENT

We Move Any Type of Building

MAIL ADDRESS

PHONE

29 FURLONG RD., HENRIETTA, N. Y. MONROE 7177

PORTLAND BUILDERS' SUPPLY, Inc.

Sole Distributors

Vento Puttyless Steel Sash

DEALERS IN MASONS' SUPPLIES

Office and Warehouse

1075 RIDGE ROAD

Tel. GLEN. 1748

Warehouse No. 2

SHEPPLER and STONE ROAD

Tel. CHAR. 828

Sand and Gravel Pit

Top of NEWPORT HILL

Tel. CULVER 1036

SCREENS

Window, Door and Porch Screens

INSTALLED COMPLETE

We Specialize in This Line

THE WOODCRAFT SHOP

300 NORTON STREET

C. H. RUGG COMPANY

STONE 742

Manufacturers of

Architectural Woodwork

SINCE 1870

N. Union and Augusta Sts.

Rochester, N. Y.

American Clay & Cement Corporation

CULVER 1000—1001—1002—1003

1175 MAIN STREET EAST

General Contractors' and Builders' Supplies

Representatives of Lehigh and Ironclad Cement,
Sewer Pipe, Wall Plaster, Lime, Face Brick, Paving
Brick, Fire Brick, Truscon Technical Paints and
Water-proofing, Truscon Steel Sash, Kreolite
Wood Block, Reinforcing Material.

EVERYTHING FOR THE CONTRACTOR AND BUILDER

Schaefer Bros. Builders' Supply Co., Inc.

Mfrs. of Washed and Purified Cinder Blocks and Tile
Insulation and Plaster Board

DOWN TOWN OFFICE 116 POWERS BLDG. TEL. GEN. 3460

Office and Factory Phones—Genesee 3460-3461

Office and Factory

Chili Ave. between Penn. R. R. and B. R. & P. at Barge Canal



ConSOLIDated

WASHED SAND AND GRAVEL

Sold "by the ton"—the only way to get what you order
in quantity even as you get it in quality, the ConSOLIDated
way.

Truckloads

— Carloads

— Trainloads

Consolidated Materials Corporation

Distributing Stations, 221 Mt. Hope Ave.—Monroe 6852 & N. Y.
C. R. R. Siding, Barnard, N. Y.—Glen 1147

General Offices, 605 Terminal Bldg., 65 Broad St.—Main 4729

A Store of Separate, Segregated Shops, Specializing
in Every Phase of Fashionable Feminine
Apparel and Accessories, and in the
Various Aids to Charm

B. FORMAN CO.

Clinton Avenue South

Cortland Street

FREDERICK BAETZEL

ANTHRACITE **COAL** BITUMINOUS

PERRY-BAETZEL SAND CO.

SAND AND GRAVEL
Pit at Bushnell's Basin

438 EXCHANGE STREET - ROCHESTER, N. Y.
Telephone 1508 Main

E. E. SHUTT, President V. H. RUSSELL, Treas. and Mgr. GRACE D. ROSS, Secretary

CHAS. C. WEST COAL CO., Inc.

WHOLESALE AND RETAIL DEALERS IN

COAL and COKE

Main Office and Trestle, 281-285 North Union Street
CULVER 999-2074

W. BERT WOODAMS, Mgr.

MONROE 4300

W. G. WOODAMS

Coal and Coke

783 SOUTH AVENUE

ROCHESTER, N. Y.

ONTARIO ICE CO., INC., COAL

DEALERS IN

Anthracite **COAL** *Bituminous*
COKE

A Clean, Safe, Economical Fuel
With Service

ROCHESTER, N. Y.

Main 2230

SEA BREEZE, N. Y.

Culver 340

Irondequoit Coal and Supply Company

Telephone Glenwood 3471

We offer greatly improved delivery service for our section of the city and Irondequoit, and your wants in our line will be supplied promptly and at the lowest cost

Coal, Wood, Hay, Straw and Grain—Building Material
Paint, Oil and Glass—Fertilizers—Garden Tools
Agricultural Implements

149 RIDGE ROAD, near St. Paul St.

ROCHESTER, N. Y.

D. & H. LACKAWANNA ANTHRACITE

SAFE CLEAN ECONOMICAL 1823

Edelman Coal Company



1930

88 PORTLAND AVENUE

STONE 576

Contractors

42

ROCHESTER [1930] SUBURBAN

WM. SUMMERHAYS SONS

CORPORATION

Boiler Settings, Fire Masonry, Special Furnaces
Power Plant Chimneys of Radial and Common
Brick. . . . Lightning Arrestors Installed.

SUMMERHAYS REFRACTORY SUPPLIES

INCORPORATED

Fire Brick, Carborundum Brick, Insulating Brick
Plastic Fire Brick, High Temperature Cements
Fire Clay, Asbestos.

Office and Yard, 620 CLINTON AVENUE SOUTH

Phone Monroe 1155

RAY OIL BURNERS

HEAT BY RADIATOR

WILLIAM C. BARBER

*Plumbing and Heating
Contractor*

1736 PORTLAND AVENUE - ROCHESTER, N. Y.

Phone Stone 3384

Dress Up

Your Business. Put your name in bold
face type under every heading that de-
scribes your product.

It Pays

ADVERTISING DEPARTMENT

43

McINERNEY DETECTIVE BUREAUWILLIAM K. McINERNEY, *Director****Expert Investigators***

Criminal, Commercial, Industrial, Legal, Insurance, Merchants Protective Service

Twenty Years with Rochester Police Detective Bureau

Rochester Office—The World Association of Detectives,
with offices in all parts of the world.**601 UNION TRUST BUILDING****Telephone MAIN 3457***Twenty-four Hour Service*

Licensed and Bonded

Nights Genesee 14

W. C. ADLER

Principal

MAIN 1553

NIGHTS MAIN 4462-M

ADLER DETECTIVE SERVICE

LICENSED AND BONDED

Supremacy in***Secret Service Achievement*****430 POWERS BUILDING****ROCHESTER, N. Y.****Directory Advertising Brings*****SATISFACTORY RESULTS***

See that your business is properly represented

Watts Dry Cleaning Co., Inc.

WM. I. WATTS, Pres. and Treas.

***Specializing in Ladies' and Gentlemen's
Garments*****322 Cottage Street, Rochester, N. Y.**

Genesee 614

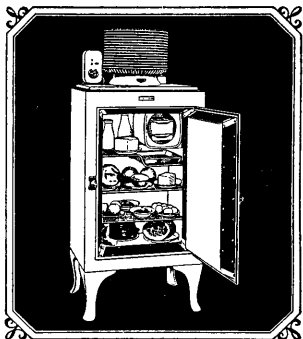
Auto Delivery

Electric Refrigeration

44

ROCHESTER [1930] SUBURBAN

GENERAL ELECTRIC Refrigerator



-an hermetically sealed, dust-proof mechanism.
-an easily accessible temperature control.
-a mechanism that requires no oiling.
-all troublesome machinery eliminated.
-a new standard of quiet operation.
-mounted on legs with broom-room underneath.
-no installation problem whatever.
-a sanitary, porcelain chilling chamber.
-the entire mechanism mounted on top.
-absolutely no radio interference.
-maximum food storage space in the cabinet.
-an appreciably lower cost of operation.
-a radically improved type of cabinet.
-an unqualified two-year guarantee.

*These proved, distinctive features
have brought enviable leadership*

STONE 3333 260 EAST AVE.

(Wholesale Office—33 St. Paul St.)

Wheeler Refrigerator Corp.

FRIGIDAIRE REFRIGERATION

For Every Household and Commercial Use

GILBERT APPLIANCE CORP.

265-271 EAST AVENUE

STONE 1592

Open Evenings

Give your business a chance. Display it in your city directory under headings describing your different lines. They will bring you increased sales at less expense than any other salesman in your employ.

Lighting Fixtures**Electrical Contractors**

ELECTRIC REFRIGERATION

RADIOS

ELECTRIC HEALTH APPLIANCES

Phone STONE 6

BARBER-DONOVAN Inc
Electrical Studios

285 Alexander Street

Rochester, N. Y.

HICKSON ELECTRIC CO.
 INCORPORATED

Rochester Radio Pioneers
Owners and Operators of WHEC

Wiring and Fixtures**Appliances****Radios and Accessories**

36 SOUTH AVENUE

PHONE STONE 93

Laube's *is a complete* **Directory**
for All Things Electrical

Over a quarter-century's reputation for serving faithfully and offering
 merchandise of quality.

Radio-Fixtures-Appliances-Wiring-Oil Heat-Washing Machines

Laube *Electric Corp.* **338-40 Main St. E., Stone 104**

Your Delivery Service Needs a Copy of this
 Directory, so does your Collection Department, your
 Sales, Purchasing, Mailing and every other Department
 in your Business.

You can use it Every Day in the Year.
 We will be Glad to Send you a Copy.

SAMPSON & MURDOCK CO., Inc.
Publishers

729 POWERS BUILDING - ROCHESTER, N. Y.

Engineers and Surveyors

46

ROCHESTER [1930] SUBURBAN

Gloster P. Hevenor

Harold F. Smeed

Lewis B. Smith

Hevenor & Weller, Inc.*Civil Engineers*

FIVE ST. PAUL STREET

Rochester, N. Y.

TELEPHONE MAIN 1732

GEORGE R. NEWELL

CHARLES E. WALKER

NICHOLAS A. ALBERTSON

PHONE MAIN 4223

George R. Newell, Inc.**ENGINEERS AND SURVEYORS****103 Main Street West, ROCHESTER, N. Y.**SEWERAGE
WATER WORKS
PAVEMENTS
ESTIMATESPLANS, SPECIFICATIONS
SUPERVISION
SURVEYS
SUBDIVISIONSCITY PLANNING
TITLE SEARCH
APPRAISALS
REPORTS

CONSULT THE

CLASSIFIED BUSINESS LISTS

IN THIS DIRECTORY

IF YOU WOULD FIND WHAT YOU WISH TO BUY

ADVERTISING DEPARTMENT

47

FERNANDO J. KELLER, Pres. and Treas.

J. MICHAEL KELLER, Vice-Pres.

WILLIAM L. KELLER, Sec'y

*J. B. Keller Sons.***FLORISTS****25 Clinton Avenue North**Greenhouse Phone, Monroe 6530
Office Phone, Stone 484-485-486**Rochester, N. Y.**CUT FLOWERS
FLORAL DESIGNSFLORAL DECORATIONS
OF ALL DESCRIPTION**EDW. BROCKMANN'S SONS***Florists*

Phone CULVER 3912

Wholesale and Retail

We Deliver Anywhere

1991 RIDGE ROAD**R. D. 5, ROCHESTER, N. Y.****H. E. WILSON, Inc.****FLORISTS**

Cut Flowers

Plants

Designs and Decorations

Greenhouses:**AVENUE D and
HUDSON AVE.****Telephone Main 1084****Stores:****42 MAIN STREET, EAST
835 HUDSON AVENUE****Rochester, N. Y.**

Member Florists Telegraph Delivery



Rochester Floral Company
Dealers in
Choice Flowers and Plants
DESIGNS AND DECORATIONS
A SPECIALTY
33 FRANKLIN ST., ROCHESTER, N. Y.

Funeral Directors

48

ROCHESTER [1930] SUBURBAN

ASHTON FUNERAL HOME

636 WEST MAIN STREET
ROCHESTER, N. Y.

CHARLES E. ASHTON

Telephone
GENESEE 4390

Office Phone
STONE 1179

Residence Phones
MONROE 2111, 2887-W and 2746-J

BENDER BROTHERS

Funeral Directors

301 ALEXANDER STREET - ROCHESTER, N. Y.



ESTABLISHED 1872

L. W. MAIER'S SONS

Funeral Service

870 CLINTON AVE., NORTH, ROCHESTER, N. Y.

Telephone Stone 609

**Before buying home furnishings you
owe it to yourself to look at GRAVES,
Rochester's largest and oldest Home
Furnishing House**

Furniture

Rugs

Linoleum

China

Lamps

Stoves

Curtains

Draperies

House Furnishings Toys

Atwater-Kent, Bosch, Stromberg Radio

"It pays to trade at GRAVES"

H. B. GRAVES CO., Inc. 78 STATE ST.

JOHN B. HOWE
President

JOHN CONNORS
Vice-Pres. and Treas.

WILLIAM J. DORSEY
Sec'y.

HOWE & ROGERS CO.

***FURNITURE, FLOOR COVERING
DRAPERIES***

89 and 91 CLINTON AVE. SOUTH

ROCHESTER, N. Y.

ROCHESTER AT A GLANCE-

complete street directory (pocket size) of Rochester and vicinity, with much other valuable information about the city and map.

FINGERPOINT MAP OF ROCHESTER AND VICINITY-

folded in pocket form with street index that enables you to find the location in a jiffy. Size 25 by 40 inches open.

***For sale by the leading newsdealers and stationers.
Guide, 25 cents: Map, 50 cents.***

50

ROCHESTER [1930] SUBURBAN

EVERYTHING'S GOOD FROM

Garson & Wood*111 Clinton Avenue South*

HOMES FURNISHED COMPLETE

MAIN 5103

Maps of RochesterIN SHEETS OR FOLDED IN
POCKET FORM**SAMPSON & MURDOCK CO., Inc.**

729 POWERS BUILDING

FURSof Rare Quality
Style Distinction
Fine WorkmanshipAutomatic
Cold Storage
Vault

Complete Safety

*Manufacturers of Fine Furs***WM. V. GRAESER CO., 38 CLINTON AVE. NORTH**

MAIN 5729

MAIN 5356

PHONES

MAIN 5355

HENRY LESTER HARDWARE CO.

INCORPORATED

GROVER A. CLICQUENNOI, Pres. and Mgr.

West Main, Corner Washington***BUILDERS' HARDWARE SPECIALISTS***

ARCO PAINTS

BALDWIN REFRIGERATORS

MECHANICS' TOOLS

RED CROSS RANGES

NEW PROCESS GAS RANGES

HOUSE FURNISHING GOODS**LONG HARDWARE CO.**

Lowe Brothers Paint Hardware
Electrical Supplies Building Supplies
Sporting Goods

CULVER 3940

4411 CULVER RD., SEA BREEZE

WEED & COMPANY

WHOLESALE AND RETAIL

HARDWARE

PHONE 7900 MAIN

Builders' Hardware
Cutlery

House Furnishing Goods
Mill and Shop Supplies

Automobile Tires
Sporting Goods

15 EXCHANGE STREET

Phones 345-346 Main

Established 1883

KENNEDY-CLARK, INC.

(FORMERLY KENNEDY & CO.)

22 SOUTH AVENUE**REFRIGERATORS****Red Cross Stoves****Dangler Gas Ranges****STOVE AND FURNACE REPAIRS**

Your Advertising?

DOES your advertising fit your business or is it simply a matter of habit? Does it produce results or is it a waste of money?

ARE you satisfied with the way your advertising copy is prepared and placed?

WE offer you advice, counsel and service of experienced advertising men—men who can successfully cope with your problems

TALK your troubles over with us. We can help you increase your business

Sampson & Murdock Company, Inc.**729 POWERS BUILDING****ROCHESTER, N. Y.***Main Office, 377 Broadway, Boston, Mass.*

TEALL'S ICE CREAM

known for 61 years
for its high quality

*Guaranteed by***TEALL'S ICE CREAM COMPANY****285-287 ORMOND STREET****STONE 361-362**

1852**1930**

W. O. ASHLEY, Pres.

J. A. DUPUY, Vice-Pres.

CHAS. T. RAU, Vice-Pres.

ARTHUR L. GRIFFITH, Vice-Pres.

FRED D. ZWICK, Sec'y

CHARLES E. SCHMIDT, Treas.

A. E. HEBERLING, Asst. Sec'y

EGBERT F. ASHLEY CO.

GENERAL INSURANCE

UNION TRUST BUILDING MAIN ST., WEST

Member of Underwriters Board of Rochester, N. Y., Inc.

Assets of Companies Represented Over \$300,000,000.00

Rochester American Ins. Co. of N. Y.

Hartford Fire Insurance Co. of Hartford, Conn.

North British & Mercantile Ins. Co. of London, England

Providence-Washington Ins. Co. of Providence, R. I.

Connecticut Fire Insurance Co. of Hartford, Conn.

Hartford Live Stock Ins. Co. of Hartford, Conn.

Great American Insurance Co. of New York City, N. Y.

Fire Association of Philadelphia, Pa.

Hartford Steam Boiler Ins. Co. of Hartford, Conn.

Guarantee Company of North America of Montreal, Canada

United States Guarantee Co. of New York City, N. Y.

Standard Accident Insurance Co. of Detroit, Mich.

Hartford Accident and Indemnity Co. of Hartford, Conn.

**FIRE—WORKMEN'S COMPENSATION—PLATE GLASS
LIABILITY—LIVE STOCK—RAIN—MARINE—BURGLARY
STEAM BOILER—BONDS—TRANSPORTATION—AUTOMOBILE**

REPRESENTED BY

Hermann Duill

Harry E. Miller

C. Arthur Rau

Byron Perry, Jr.

Herbert Hoeffel

Frederick G. Meyer

L. F. Sproul, Adjusting Dept. (Workmen's Compensation—Automobile)

R. P. Gilray, Steam Boiler Inspector

Telephones Main 444

ROCHESTER, N. Y.

Insurance (General)

54

ROCHESTER [1930] SUBURBAN

JAMES JOHNSTON AGENCY

INCORPORATED

NO. 214 GRANITE BUILDING**Telephone Main 697**

JAMES JOHNSTON, *Pres.*
 AUSTIN F. GRAB, *Vice Pres.*
 ROY A. DUFFUS, *Sec'y*

GEORGE W. COLBURN, *Vice Pres.*
 ROBERT F. WOERNER, *Treas.*
 LEONARD H. HENDERSON, *Sec'y*

INSURANCE

All Kinds — Principally

Fire
 Steam Boiler
 Plate Glass
 Explosion

Automobile
 Sprinkler Leakage
 Personal Accident
 Aircraft

Burglary
 Liability
 Tourists
 Windstorm

Workmen's Compensation
 Fidelity and Surety Bonds

COMPANIES REPRESENTED

Home Insurance Co.
 Queen Insurance Co.
 Westchester Fire Ins. Co.
 City of New York Ins. Co.

Royal Insurance Co.
 New York Underwriters Ins. Co.
 Norwich Union Fire Ins. Society
 United States Fire Ins. Co.

Royal Indemnity Company

American Surety Company

AGENCY REPRESENTATIVES

WILLIAM R. ORWEN
 CHARLES BENTON
 ROBERT A. HAMILTON, Jr.

PAUL GOVERTS
 ARTHUR L. WELSH
 PHILIP C. GOODWIN

CASUALTY DEPARTMENT

Superintendent, ROY A. DUFFUS
Claim Adjuster, RALPH M. LOBER

HENRY M. WEBB

LEONARD V. WEBB

W. STAUNTON MOYLAN

FIRMAN-WEBB CO., Inc.

ESTABLISHED 1867

General Agents

Alliance Casualty Company
 National Fire Insurance Company
 Agricultural Insurance Company
 Fidelity and Deposit Company of Md.
 Sentinel Fire Insurance Company

*A complete insurance institution anticipating the needs
 of its clients and rendering efficient personal service*

INSURANCE

Member of the Underwriters Board of Rochester, N. Y.

110-111-112 WILDER BLDG.

8 EXCHANGE ST.

*Telephone Main 83***HOWARD C. DANA & CO.**

*Fire, Casualty, Surety, Marine
 Insurance*

410-416 GRANITE BLDG.

ROCHESTER, N. Y.

Phone Stone 691-692

43 East Avenue

Stone 5295

Rochester, N. Y.


Insure inSURE Insurance

Member of the Underwriters Board of Rochester, N. Y., Inc.

GENERAL AGENT — COMMERCE CASUALTY CO.

Insurance (General)

56

ROCHESTER [1930] SUBURBAN

Office 60 Years Old

Established 1870

COMPANIES REPRESENTED:

Phoenix Insurance Co. of Hartford, Conn.

United States Casualty Co. of New York City

INSURANCE WRITTEN:

Fire, automobile, liability, burglary, use and occupancy;
 sprinkler leakage, riot and explosion, elevators, boiler,
 plate glass and other kinds of insurance except life

R. S. PAVIOUR & SON, INC.ERNEST A. PAVIOUR, *Pres.*JAMES H. FARRELL, *Treas.***1007 COMMERCE BUILDING**

MEMBERS OF THE UNDERWRITERS BOARD OF ROCHESTER, N. Y., Inc.

T. A. SHARP, President

C. EMMETT HAYES, Treas.

C. R. HAGGERTY, Sec'y

HAYES, SHARP & HAGGERTY, Inc.

Member of the Underwriters Board of Rochester, N. Y., Inc.

We do not sell Mutual or Cut-Rate Casualty Insurance

*Member Casualty Insurance Club of Rochester***General Insurance**

401-408 East Avenue Building

414 MAIN STREET, E.

ROCHESTER, N. Y.

PHONES STONE 1196-1197

WINDSOR & WINDSOR

INC.

Fire Insurance

Liability

Compensation

Automobile

Accident

General Insurance**321 POWERS BUILDING**

MAIN 2867

ROCHESTER, N. Y.

Life

Boiler

Burglary

Plate Glass

Etc.

A. M. WINDSOR

President

L. E. WINDSOR

Vice-President

MABEL V. WINDSOR

Sec'y and Treas.

ADVERTISING DEPARTMENT

57

HENRY S. FORBES

TELEPHONE STONE 800

HAROLD H. PORTER

NYE, FORBES & PORTER**General Insurance**

Member National Association of Insurance Agents
 Member Underwriters Board of Rochester, N. Y., Inc.
 Member Casualty Insurance Club



107-109 Commercial Building

119 Main St. E., Rochester, N. Y.

PARKER-CONSLER AGENCY*Member of The Underwriters Board of Rochester, N. Y., Inc.**We do not sell Mutual or Cut-Rate Casualty Insurance.***114 Wilder Bldg.****Main 3756****GENERAL INSURANCE****BONDING****RELIABLE COMPANIES - EFFICIENT SERVICE**

Royal Insurance Co., Ltd.

Newark Fire Insurance Co.

Globe Indemnity Co.

Public Fire Insurance Co.

Claim Dept., 31 EXCHANGE ST., Rm. 310

TEL. MAIN 6626

O. L. PRITCHARD**INSURANCE****WILDER BLDG., ROCHESTER, N. Y.****Main 6352****J. B. Crouch****Associates****Joe Connor****G. W. Morsches****L. WALTON SMITH AGENCY****MRS. LAURA W. SMITH, Agent**

Member of The Underwriters Board of Rochester, N. Y., Inc.
 We Do Not Sell Mutual or Cut Rate Insurance
 Member Casualty Insurance Club of Rochester

GENERAL INSURANCE**701-703 Commerce Building****Stone 2000****ERNEST L. WHITE****CHAS. J. GLIDDON****ERIC B. HOARD****MOREAU SMITH**

Insurance (General)**Jewelers****Laundries**

58

ROCHESTER [1930] SUBURBAN

HARRY J. McKAY

Member of the Underwriters Board of Rochester, N. Y., Inc.

Member Casualty Insurance Club of Rochester

We do not sell Mutual or Cut-Rate Casualty Insurance

GENERAL**INSURANCE****SERVICE**Representing Companies with a Century's Record for
Service and Satisfactory Settlements

MAIN 261 - 262

409-413 Central Trust Building

25 Main Street East

Leo. J. McGrael, Frederick Mutschler, Frank W. Sciarino, Representatives

*A Space Like This in Your City Directory Will
Produce New Business*

TRY ONE IN THE NEXT ISSUE

*We will gladly submit copy for your display***SAMPSON & MURDOCK CO., Inc.****729 POWERS BUILDING - ROCHESTER, N. Y.**

THE HOUSE OF "SCHEERTON" MOUNTINGS

E. J. SCHEER**Jeweler**

259 Main Street East, at Cortland

REMODELING DIAMOND JEWELRY A SPECIALTY

If you are interested in Clean Clothes*We can give you a Family Washing "ready to wear"*

FROM \$1.00 UP

KELSO LAUNDRY CO.

497 STATE STREET

-

-

Phone Main 898

William S. Morse, Pres.
C. C. Morse, Vice-Pres.

Whiting B. Morse, Sec'y
Howard C. Morse, Treas.

Wm. B. Morse Lumber Co.

WHOLESALE AND RETAIL

LUMBER

340 MAIN STREET, WEST

BRANCHES

Otis Lumber Co.
936 East Main St.

Wm. B. Morse & Sons
340 Main St. West

North End Branch

Thomas Ave. near Stutson St. Bridge

Morse Sash and Door Co.

S. Ford St. cor. Waverly Place

A. N. MARTIN SONS, INC.

Lumber Interior Trim

¹⁸⁶⁶
CURTIS
WOODWORK

ROCHESTER, N. Y.
254 East Avenue
Phone: Stone 2158

WEBSTER, N. Y.
111 Commercial Street
Suburban: 124-02



*Lumber Wholesale Interior Finish
Builders' Finish*

Corner PUBLIC MARKET and RAILROAD ST.
ROCHESTER, N. Y.

Lumber

60

ROCHESTER [1930] SUBURBAN

Greece Lumber Company

TEL. GLENWOOD 2391

Office and Yard

788 LEWISTON AVENUE

DEALERS IN

COAL, ROUGH AND DRESSED LUMBER

PEOPLES

COAL & LUMBER CO.

Lumber, Sash, Trim, Mason Supplies, Etc.

COAL .. COKE .. WOOD

PHONE
CHAR

80

4585 LAKE AVENUE

Sampson & Murdock Company's
Directories have been made
and sold for over
Eighty Years

*People who use them understand
why they are more popular to-day
as an advertising medium than
ever.*

Sampson & Murdock Co., Inc.

729 POWERS BLDG.

ROCHESTER, N. Y.

THE CREDIT RATING CORPORATION*SUCCESSORS TO*

The Commercial Record Company and
The Rochester Audit and Reporting Company

Business Established Since 1892

Member of The National Retail Credit Association
Member of The Rochester Retail Credit Men's Association
Member of The Associated Credit Bureaus of New York State

Correspondents in England, Canada, Cuba and all large cities and towns
in the United States

Credit Basing Information is the Foundation of Profitable Business

947-949-951 MERCANTILE BLDG. STONE 3090 ROCHESTER, N. Y.

BICYCLES — ALL LEADING MAKES

*Iver Johnson, Columbia, Indian, Whippet, Henderson,
DeLuxe, Triumph, Packard, Shelby Flyer*

A Very Complete and
Exclusive Line of **CHILDREN'S VEHICLES**

Velocipedes, Coasters, Scooters, Autos, Etc.

Distributors for **INDIAN MOTORCYCLES and SIDECARS**
RELIABLE REPAIRS AND SUNDRIES

*36 Years of Dependable Service***THE GEO. L. MINER CO.**

184-188 Clinton Avenue, S.

NEW INDIAN SILVER ARROW OUTBOARD MOTOR

Good Business Insurance Includes
an advertisement in the local City
Directory—**Always.**

FOR

Addressing
Mailing

Mimeographing
Local Lists

Multigraphing
Sales Letters

Mail Advertising Service

CALL MAIN 6199**AYER & STREB**

70 EXCHANGE STREET ROCHESTER, NEW YORK

When the Mind is Fresh!

There is a time of day when facts—grasped at a glance—inspire confidence and furnish renewed energy for a whole day's activities.

In the Morning

READ THE

Democrat  **Chronicle.**

Community events — Pages of pictures — Associated Press dispatches — Special Writers — last minute flashes — highlights of the world's happenings at a glance --- all this and more is offered to you daily and Sunday through the columns of the Democrat and Chronicle.

A Newspaper Whose Readers Are Assured of the Best

Famous is the Rochester Journal "Blue Book" of feature writers, containing such nationally known names as:

Arthur Brisbane
O. O. McIntyre
Damon Runyon

Herbert Kaufman
Arthur (Bugs) Baer
Elsie Robinson

Dr. Royal S. Copeman
Cray L. Remington
Robert Ripley

In no other Rochester newspaper will you find so many reader interest features.

The **ROCHESTER**
JOURNAL ✻ **AMERICAN**

To Newspaper Readers

- ¶ People who want to-day's news TODAY buy the Times-Union.
- ¶ People who want complete news—and in great variety—buy the Times-Union.
- ¶ Families who must have a clean newspaper in their homes insist on the Times-Union.
- ¶ Families with growing, impressionable children, know that they let their children read the Times-Union. There is nothing in it that the boys and girls should not see.

To Buyers of Advertising Space—

- ¶ The Times-Union is enjoying a steadily increasing circulation—concentrated in, or very close to, the City of Rochester.

ROCHESTER TIMES-UNION

ROCHESTER'S GERMAN DAILY

ABENDPOST

is delivered every afternoon directly into the homes in all sections of the city by carriers and in the surrounding towns by agents and the mail.

It reaches substantial buyers, who have the reputation of either purchasing for cash or meeting their obligations promptly.

ABENDPOST ADVERTISING BRINGS RESULTS

Rochester City Guide

ROCHESTER AND VICINITY

(POCKET SIZE)

Giving the name, location and intersecting number of all the streets and avenues, and telling how to reach them by trolley.

With much other valuable information, and a new, convenient sized map of the city.

Twenty-five Cents

AT ALL THE LEADING NEWSDEALERS

Please mention this directory when dealing with advertisers

Nurserymen—Optical Goods (Examiners & Prescription)

64

ROCHESTER [1930] SUBURBAN

GREEN'S NURSERY COMPANY*Nurserymen and Landscape Developers*

MR. HARRY BOONE, Landscape Architect

A complete line of hardy northern grown Trees, Shrubs, Evergreens, Perennials, Roses, Vines, Bulbs, Potted Strawberries and other Fruits.

LANDSCAPE SERVICE DEPARTMENT

The most complete service in Rochester, including Home Landscaping, Large Tree Moving, Pruning, etc. All work guaranteed. Estimates cheerfully given without cost or obligation. Consult us before you plant.

"It's Not A Home Until It's Planted"

PHONES MONROE 1960—1961

GREEN'S NURSERY COMPANY

1351 SOUTH AVENUE

- ROCHESTER, NEW YORK

**Genesee Optical Co.**

President

DR. W. W. BISSELL
OptometristSTONE
2935

Vice-President

DR. A. J. FREE
Optometrist**WE ARE EXCLUSIVELY EXAMINERS OF THE EYES
DESIGNERS AND MAKERS OF GLASSES**

We have a record of 50,000 cases. We design and make each pair of glasses for the particular needs of the person who is to wear them.

OFFICES, 510 LINCOLN-ALLIANCE BANK BUILDING**EMPIRE OPTICAL CO.****EYE
EXAMINERS**

AND MAKERS OF

**QUALITY
GLASSES****EMPIRE
OPTICAL CO., INC.**

35 CLINTON AVE. SOUTH

Next to Temple Theatre Entrance
E. E. Arrington O. C. Smith**SEE US AND SEE BEST****Who's Who
and Where?**SUCH questions can only be answered by the **Directory** and that is where people look when they want to buy. Are you properly displayed therein to get the business?

HUMPHREYS

"The Paint Man"

TWO STORES

Wall Paper

58 SOUTH AVE.

Main 4663

Paint

24 SOUTH AVE.

Main 2117

You Use a Directory

To tell you where to go
and how to get there.

The Road to Success is easy
to follow if you are consistent
in your Efforts.

BAREHAM & McFARLAND, Inc.***Plumbing and Heating***

APPLIANCES Humphrey Automatic Gas Water Heaters
 Snow-White Cabinet Clothes Dryers
 Chambers Fireless Gas Ranges
 Clow Gasteam Radiators
 Estate Heatrolas
 Oil Burners

366 EAST MAIN STREET

Phone MAIN 4313

HOWE & BASSETT CO., Inc.*Established 1885***PLUMBING AND HEATING CONTRACTORS****Oil Burning Equipment****"Electrol" Automatic Oil Burner****"RUUD" Automatic Gas Water Heaters****840-50 UNIVERSITY AVENUE**

TELEPHONE MONROE 3

MANUEL SPECIALTIES COMPANY*J. S. MANUEL, Manager*

Distributors; **BASHLIN VALVES** and **FAUCETS**,
HOSPITAL, Elbow Action Combination Fixtures,
 a Valve that Lasts the Life of the Building; It can
 never wear out; Never needs to be replaced.

*Catalog furnished upon request***119 WESTLAND AVENUE****ROCHESTER, N. Y.**

PHONE MONROE 4097

Advertising Insures Your Business

against the fluctuations due to economic conditions.
 It tends to equalize and stabilize the flow of orders.
 The Directory as an advertising medium is economical
 in price, liberal in its provisions, broad in scope and
 stands high in the confidence and esteem of the Public.

ADVERTISING DEPARTMENT

67

A. P. GERLING

L. J. ZWIERLEIN

THE ART PRINT SHOP

DESIGNERS OF GOOD PRINTING

Catalogues, Folders, Booklets, Stationery

MAP MAKERS**77 ST. PAUL STREET****STONE 567***George P. Burns Press, Inc.*

Printers



Publishers

49-51 North Water Street

Stone 5316

Rochester, N.Y.

Modern
Equipment*Quick Service*Convenient
Location**BURNETT
PRINTING
COMPANY**Catalogues
Booklets
Regular
Publications
Stationery

27 South Water Street

Factory
Forms
Direct Mail
Advertising
Folders, &c.

OUR ADVERTISERS HELP TO KEEP
THE SUBSCRIPTION PRICE OF THIS
BOOK AT A REASONABLE FIGURE.

**WE ASK YOU TO GIVE THEM
YOUR SUPPORT**

Please mention this directory when dealing with advertisers

The Barnard Development Co.

Incorporated

HOUSTON BARNARD, *President*

850 POWERS BUILDING

Exclusive residential sites carefully restricted

EAST AVENUE SECTION

MAIN 2126

Telephones

MONROE 1675

MAIN 5800

TELEPHONES

MAIN 5801

L. A. ROBERTS

Seventeen Years of Dependable Service

Business Opportunities—Mortgage Loans

"We Write Fire Insurance"

**City Real Estate, Farms and Suburban
Properties, Bought, Sold and
Exchanged**

Offices, 303-305 CENTRAL TRUST BUILDING

25 MAIN STREET E. ROCHESTER, N. Y.

ADVERTISING DEPARTMENT

69

Building and Real Estate Specialists

SPECIALIZING IN

Summerville Blvd., Tenth Ward and Stone Road
Properties

136 Thorndyke Road
Glenwood 4750

84 Charlton Road
Glenwood 2810

RENTALS

SALES

HERBERT J. BIETRY***Realtor***

1216 LINCOLN-ALLIANCE BANK BLDG., ROCHESTER, N. Y.

Expert Service, Rent Collections and Property Management**IF YOU WISH TO SELL YOUR PROPERTY OR BUY A HOME**

Call MAIN 5000 or 100

ANDREWS REAL ESTATE**513 DUFFY POWERS BUILDING**

We have departments specializing in—

Homes and Investment properties

Farms and Village properties

Lake front and Florida properties

Lease and Mortgage Departments

TELEPHONE MAIN 5000 OR 100

70

ROCHESTER [1930] SUBURBAN

**REALTORS**WM. C. DALEY
*President***209 POWERS
BUILDING***Main 983***SPECIALISTS IN SUBDIVISION DEVELOPMENT****MAIN 705****SALES .. RENTALS .. EXCHANGES .. APPRAISALS***Rent Collections - Property Management - Fire Insurance***508-509 DUFFY-POWERS BUILDING****TITLE & MORTGAGE****GUARANTEE CO. of BUFFALO****GUARANTEED MORTGAGE SECURITIES***Buffalo**Rochester**Syracuse**RAYMOND G. HUDSON, Rep.***916 LINCOLN-ALLIANCE BANK BLDG.****Tel. STONE 4783****The New Celluloid Index Label****A VISIBLE FILING SYSTEM****FOR RUBBER STAMPS****SEAL PRESSES****STEEL STAMPS****C. H. MORSE & SON***Improved Rubber Stamps***15 SOUTH WATER ST.****ROCHESTER, N. Y.****Telephone Main 1291**

Sheet Metal Work Trucking Trunks and Bags

ADVERTISING DEPARTMENT

71

PHONE MAIN 6333

WM. F. SCHWARTZ & SON, Inc.*Roofing**Sheet Metal Work**Tinsmithing*

Blow Piping and General Jobbing

15-17 INDUSTRIAL STREET, ROCHESTER, N. Y.

H. W. LEASTMAN*Trucking and Teaming*

GARBAGE AND ASH COLLECTIONS

Made weekly in the following towns

Brighton, Chili, Gates, Greece, Irondequoit & Penfield

FOR THIS SERVICE

PHONE GLENWOOD 3392-M

Elmgrove Rd., Greece

“LIKLY’S”***Rochester's Leading Luggage Store***

Wardrobe Trunks

Fitted Suit Cases & Bags

Dress Trunks

Ladies' Hand Bags

Steamer Trunks

Small Leather Goods

Traveling Bags

Umbrellas

Suit Cases

Gift Novelties

And All Other Requisites for the Traveler

271 MAIN STREET EAST - ROCHESTER, N. Y.

ONLY ONE STORE

E. F. Ament, *Pres.*F. W. Ament, *Vice-Pres.*C. P. Ament, *Sec. and Treas.***Wall Paper****Frescoing****Expert Mechanics****Painting****Outside Painting****Colby and Ament Co.*****Decorative Specialists***

PHONE MONROE 512

499 MONROE AVE., ROCHESTER

Too Late for This Issue?

Then arrange NOW to have your name properly listed and your business classified and cross indexed in the next edition of the Rochester Suburban Directory.

The City Directory has become a universal necessity in looking up new prospects, in purchasing supplies, and in marketing products. Don't forget that directory advertising supplements and rounds out all your other advertising by giving the most explicit directions how to find you.

Put "We are listed in the Directory" in all your advertising copy. Addresses are often forgotten or mislaid, though the name is remembered. The firm that is properly listed under all headings in the directory that describes its product, is wise.

Investigate the City Directory, the book of many uses

Sampson & Murdock Co., Inc.

*Directory Publishers Since 1846***CLOVER STREET WATER DISTRICT**

BRIGHTON

HIGHLAND-CLINTON WATER DISTRICT

BRIGHTON

MONROE AVENUE WATER DISTRICT

BRIGHTON

HELENDALE AND VICINITY WATER DISTRICT

IRONDEQUOIT

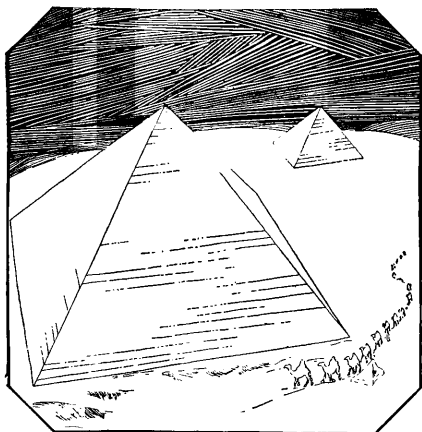
GEO. H. BLIVEN, Agent for the Water Commissioners

IN CASE OF TROUBLE PHONE EITHER OF THE FOLLOWING NUMBERS

Office, Main 5737. Res. Glenwood 4026, Monroe 5717-W, Culver 4264-W

310 POWERS BUILDING

ROCHESTER, N. Y.



A Lasting Advertisement

**Insuring Maximum Coverage at Minimum
Cost Is Now Available**

City Directory Advertising lives as long as the book is current. It is readily at hand and can, through cross indexing of proper representation, be made easy to find and fully informative. Any business-man, desirous of effectively registering a service or product, in such a manner as will form a permanent advertisement, owes it to himself and his business to be thoroughly informed on City Directory Advertising.

Your City Directory is not alone a local medium. By a system of distribution through nearly 500 City Directory Libraries, your advertisement takes on a national aspect. Send for descriptive Library Folder and Privilege Card.

SAMPSON & MURDOCK CO., Inc.

729 POWERS BUILDING

ROCHESTER, N. Y.

INSURANCE

A TEN MILLION DOLLAR Company that pays
back to its policyholders ANNUALLY

25%

in DIVIDENDS on AUTOMOBILE INSURANCE.

*Our Companies pay Dividends on all forms
of Insurance*

E. S. BOHACHEK, Inc.

ROCHESTER THEATRE BUILDING

MAIN 2503



COURT STREET BRIDGE, SUBWAY AND BARGE CANAL HARBOR