

BEFORE PLACING YOUR LIFE
INSURANCE, CHECK THE
FACTS AND SAVE YOURSELF
PREMIUM DOLLARS

THE NORTHWESTERN MUTUAL LIFE INSURANCE COMPANY
OF MILWAUKEE, WISCONSIN
ESTABLISHED 1857
EARL E. LINCOLN, General Agent and Associates
1400 LINCOLN-ALLIANCE BANK BUILDING
STONE 498

ALLIANCE MERCANTILE AGENCY — COLLECTIONS
COMMERCE BUILDING — PHONE MAIN 2133

HERBERT A. ROGERS

ROCHESTER *Real Estate Broker* BUFFALO

LOAN CORRESPONDENT
UNION CENTRAL LIFE INSURANCE CO.
MAIN 5131
43 EAST MAIN STREET

= PHOTO COPIES =
DRAWING MATERIALS

STONE 6480

CITY BLUE PRINT CO.

Central Library of Rochester and Monroe County - City Directory Collection - 1944

STONE 6480

BLACK AND WHITE PRINTS

— WM. F. SCHOCK —

= SIX ATLAS STREET =

THE ANTHONY J. KLUG AGENCY

MAIN
1776



1018 Commerce Bldg.
119 E. Main St.
Rochester, N. Y.

OFFERS:—

Retirement Plans — Endowments — Annuities — Preferred Risk Life Insurance — Sub-Standard Insurance — Group Insurance and Employee Benefit Plans — Pension Trusts and Group Annuities

— BROKERAGE ACCEPTED —

PROPERTY
MANAGEMENT
RENTALS

HERBERT J. BIETRY REALTOR

1117 LINCOLN-ALLIANCE BANK BLDG.

RENT
COLLECTIONS
SALES

TEL. STONE 2904

— CLARK —
BOLLER
INSURANCE
OF ALL KINDS
MAIN
5305

BEAUTIFUL — ENDURING
FURNITURE

YOU'LL LOVE TO LIVE WITH
AT PRICES
 YOU CAN AFFORD TO PAY



7 GOOD REASONS

For Coming To

GRAVES

When Buying Home Furnishings

1. **WIDE VARIETY OF ASSORTMENTS**
 From the Lowest Price that is Good to the Finest Creations of Master Designers and Craftsmen.
2. **EXPERTLY SELECTED MERCHANDISE**
 . . . by buyers schooled through training and experienced to choose wisely and well.
3. **COURTEOUS FRIENDLY SERVICE**
 Skilled individual attention and advice.
4. **EVERYTHING UNDER ONE ROOF**
 Six spacious floors displaying everything for the Home in Closely Coordinated Departments.
5. **27 COMPLETELY FURNISHED ROOMS**
 To give helpful suggestions and aid you in making selections.
6. **FREE INTERIOR DECORATOR SERVICE**
7. **INCREASED CUSTOMER SATISFACTION**
 AS FEATURES OF STYLE, COMFORT, AND DURABILITY ARE TESTED BY TIME.



Established 1889

**FURNITURE
 CARPETS — RUGS
 LINOLEUM
 GLASSWARE
 DINNERWARE
 RADIOS
 DRAPERIES
 BEDS — BEDDING
 KITCHEN EQUIPMENT
 ELECTRIC WASHERS
 REFRIGERATORS
 STOVES — RANGES
 TOYS — LAMPS
 NURSERY FURNITURE
 GIFT ITEMS
 EVERYTHING FOR
 THE HOME**



*. . . Furniture of Quality -
 Traditional and Modern!*

Open Charge or Budget Payment Accounts

**FREE
 PARKING
 OPP. FRONT
 OR REAR
 ENTRANCE**

H.B. GRAVES Co

**FREE
 DELIVERY
 WITHIN
 200
 MILES**

78 STATE STREET, Cor. MARKET and MILL STREETS

RONALD C. HANDS

M. D. JEFFREYS

ALFRED C. LAMB

L. A. JEFFREYS CO.

Funeral Service

Our FUNERAL HOME will meet your every requirement. The large roomy CHAPEL with private FAMILY rooms with HOMELIKE surroundings are at your disposal. There is no additional cost for this SERVICE.

Those who are acquainted with the SERVICE of this organization are pleased to mention our professional ability and our Central Library of Rochester and Monroe County - City Directory Collection - 1944 steadfast COURTESY.

Attendants are always at your service — DAY or NIGHT.

There are many other features of COMFORT and CONVENIENCE that may be found in our institution, but we believe our SERVICE to patrons and friends for over EIGHTY-NINE years is worthy of any Hall-Mark we use as our guide.

Complete assortment of CASKETS to select from.

Cost of SERVICE in keeping with your REQUIREMENTS.

Telephones Stone 203 and 205

32 CHESTNUT STREET

POLK'S ROCHESTER

(MONROE COUNTY, N. Y.)

CITY DIRECTORY

VOL. 1944 LXXXIV

Containing an Alphabetical Directory of Business Concerns and Private Citizens, a Directory of Householders, Occupants of Office Buildings and Other Business Places, Including a Complete Street and Avenue Guide of Rochester, Rochester Suburban Streets, a list of all streets showing correct Postal Zone Numbers, a Map, and Much Information of a Miscellaneous Character; also a

BUYERS' GUIDE

and a Complete
Central Library of Rochester and Monroe County - City Directory Collection - 1944

Classified Business Directory

FOR DETAILED CONTENTS SEE GENERAL INDEX

PRICE



\$20.00

R. L. POLK & CO., Inc., Publishers

729 POWERS BUILDING, ROCHESTER, N. Y.

District Office: 179 Lincoln St., Boston 11, Mass.

**DIRECTORY LIBRARY FOR LIMITED FREE USE OF PUBLIC
AT ROCHESTER PUBLIC LIBRARY**

Member Association of North American Directory Publishers

Copyright, 1943, by R. L. Polk & Co., Inc.

Section 28, Copyright Law**In Force July 7, 1909**

That any person who wilfully and for profit shall infringe any copyright secured by this act, or who shall knowingly or wilfully aid or abet such infringement, shall be deemed guilty of a misdemeanor, and upon conviction thereof shall be punished by imprisonment for not exceeding one year, or by a fine of not less than one hundred dollars nor more than one thousand dollars, or both, in the discretion of the court.



Central Library of Rochester and Monroe County - City Directory Collection - 1944

PUBLISHERS' NOTE

The information in this Directory is gathered by an actual canvass and is compiled in a way to insure maximum accuracy.

The publishers cannot and do not guarantee the correctness of all information furnished them nor the complete absence of errors or omissions, hence no responsibility for same can be or is assumed.

The publishers earnestly request the bringing to their attention of any inaccuracy so that it may be corrected in the next edition of the directory.

R. L. POLK & CO., Inc., Publishers

GENERAL INDEX

	PAGE		PAGE
Abbreviations	32	Internal Revenue	22
Advertising Index	4	Introduction	6
Alphabetical Section	33	Jail	19
American Legion	29	Knights of Pythias	30
Apartment Buildings	959	Knights of StJohn	30
Assessment and Taxation Bureau	16	Labor Organizations	30
Association of North American Direc- tory Publishers	X	Law Departments	16, 19
Associations	25, 961	Libraries	18, 1018
Board of Education	17	Maccabees	31
Builders Exchange	25	Masonic Societies	31
Buildings—Public and Office	973	Meteorological Record	14
Bureau of Buildings	16	Military	21
Bureau of Water	16	Modern Woodmen	31
Buyers' Guide	opp 956	Monroe County Home	19
Catholic Benevolent Societies	28	Municipal Museum	17
Cemeteries	974	New York State Government	20
Chamber of Commerce	27	New York State Guard	21
Child Welfare Board	19	Odd Fellows	20
Churches in Rochester	975	Parks	17
Circuit Court of the United States	20	Police	16
City Council	15	Population	9, 13
City Courts	16	Post Offices	22
City Government	15	Postal Zone Numbers List	1061
City Planning Board	17	Protected Home Circle	31
City Statistical Review	7	Public Buildings & Halls	973
Civil Service	16, 21	Public Safety Department	16
Classified Business Directory	957	Public Schools	17
Clearing House Association	27	Public Welfare Department	17, 19
Clubs	25	Public Works Department	16
Commissioners of Elections	19	Railroad Passenger Stations	1040
Commissioners of Jurors	19	Rates of Postage	23
Constables	17	Representatives	20
Coroners	19	Rochester Post Office	22
County Court	19	Royal Arcanum	27
County Home	19	Schools	17
County Officers	18	Senators	21
Courts	16, 19	Sheriff and Deputies	19
Custom House	22	Social Service Agencies	24
Department of Commerce	15	Societies	25
Directory Library	1018	Sons of Union Veterans	28
District Court	20	State Dept of Social Welfare	20
Division of Playgrounds and Recreation	17	State Hospital	19
Elks Benevolent Protective Order of	25	State Officers	20
Financial Departments	15, 18	Street & Avenue Guide with Suburban Streets and Avenues	1069
Fire Department	16	Supervisors	18
Foresters	28	Supreme Court	19
General Directory	33	Surrogate's Court	19
Grand Army of the Republic	28	United Spanish War Veterans	29
Halls	973	United States Courts	19
Health Bureau	16	United States Government	21
Hibernians	28	Veterans of Foreign Wars of U S	29
Holidays	14	Weather Bureau	14, 22
Hospitals	18, 1006	Woodmen	31
House Directory	1069	Young Men's Christian Association	24
Improved Order of Red Men	29	Young Women's Christian Association	24

INDEX TO ADVERTISERS

THE PAGE NUMBERS BELOW REFER TO THE BUYERS' GUIDE SECTION, THE YELLOW PAGES

	PAGE		PAGE
Abstract Title & Mortgage Corporation	2	Flesch & Schmitt Inc	98
Adam Bros	5	Flower Box The	40
Adams Ogden R	71	Flower City Charcoal Co	28
Albert Florist	41	Flower City Specialty C Inc	22
Alhart Electrical Co Inc	89	Forbes & Porter Inc	58
Alliance Mercantile Agency	30	Forman B Company	35
Alliance Realty Corp	93	Francis Metal Door and Window Corporation	25
Alling & Cory Co The	86	Friedlich Robert E Agency Inc	59
Alling & Miles Inc	3	Gamrod-Harman Co Inc	82
American Glass & Construction Co	25	General Electric Supply Corp	40
American Laundry Machinery Co The	71	Genesee Valley Trust Co	8
Ashley Egbert F Co	53	Georgian Bay Lumber Co Inc	67
Ashley Machine Works Inc	69	Gerhard Optical Co	80
Babcock H H & Co Inc	27	Glen Brothers Inc	79
Bancroft Motors	3	Goldman David Co	57
Bareham H J & Sons Inc	87	Goodbody & Co	25
Barnard, Porter & Remington	81	Gottry Frank S & Son Trucking Co	102
Bartholomay Dairy Inc	32	Gottry Sam Carting Co	103
Barton & Coates	42	Goutremout J E Corporation	94
Bausch E E & Son Co	49	Graeser Wm V Co	45
Bausch & Lomb Optical Company	80	Graves H B Co Inc	inside front cover and right bottom lines
Bender Bros	42	Green T H Electric Co Inc	top edge and
Berger Bros Electric Motors Inc	38	Hadlock Paint Co Inc	85
Better Business Bureau of Rochester Inc	16	Halloran Henry D & Sons (Thos B Mooney's Sons Inc)	43
Bietry Herbert J Realtor	31	Hardwood Lumber Co	left bottom lines and
Black Diamond Coal Co	28	Harty & Vicks Inc	97
Blanchard Storage Company Inc	102	Haubner & Staflin	43
Blue Boy Dairy	33	Haverstick & Co Inc	75
Bohachek E S Inc	56	Hayner Norman C Co Inc	36
Boller-Clark Inc	56	Hedges Memorial Chapel	43
Bonbright George D B & Co	24	Hedges & Hoffman	43
Boucher George Inc	40	Henrich Carl H Inc	62
Bourne John R Estate	96	Hetzler Bros Ice Co Inc	51
Brighton Place Dairy Co Inc	33	Hetzler Foundries Inc	23
Brown Brothers Company	79	Heughes F L & Co Inc	100
Buedingen Ferdinand Co Inc	22	Hickok Mfg Co Inc	15
Caley & Nash Inc	5	Hickson Electric and Radio Corporation	left top lines and
Case W A & Son Mfg Co	83	Hires Turner Glass Co	39
Catholic Courier & Journal Inc	78	Hollister Lumber Company Ltd	47
Central Trust Co	6	Home Mortgage Company	67
City Blue Print Co	18	Hopeman A W & Sons Co	94
Clancy Carting & Storage Co Inc	102	Hotel Cadillac	30
Clancy Geo M Carting Co Inc	102	Hotel Eastman	49
Clark Paint, Oil & Glass Co	8	Hotel Ford	49
Clements James C Inc	61	Hotel Seneca	49
Cook Iron Store Co	99	Howe & Bassett Co Inc	51
Cool Chevrolet Corp	3	Hubbs & Hastings Paper Co	88
Corbett-Steeves Pattern Works	86	Humphreys The Paint Man	86
Cottage Park Inc	93	Industrial Electric Co Inc	84
Cowles A B Co Inc	21	Ingmire & Nagle Co Inc	39
Cramer-Force Co Inc The	86	Jeffreys L A Co	front edge
Cross Bros Co Inc	15	Jenkins & Macy Co	bottom edge and
Crowley Harry B	61	Johnston James Agency Inc	28
Daily Record Co Inc	79	Kalbfleisch-Champion Inc	right top lines and
Dana Howard C & Co	62	Keller J B Sons Inc	54
Davenport Machine Tool Co Inc	72	Keystone Builders Supply Co Inc	58
Democrat & Chronicle	76	King Harry M-Realtor	back cover and
Diamond Paper Box Co Inc	22	Klug Anthony J Agency	25
Doyle Detective Bureau Armored Car Service	38	Langie Fuel Service Inc	91
Dutton's Insurance Office	52	Laube Electric Corporation	front cover
East Side Savings Bank	9	Lester Henry Hardware Co Inc	28
Eastwood Wm & Son Co	98	Levis Music Stores	51
Edwards E W & Son	35	Likly Agency Inc The	back cover and
Englehardt Edw Co	57	Likly Stores Inc The	75
Erdle Perforating Co	97	Lincoln-Alliance Bank & Trust Co	left top lines and
Exchange Lumber Company Inc	67	Lincoln Earl E	65
Farmer Fanny Candy Shops Inc	80	Loeb & Rosenthal Co Inc	7
Fincher Motors Inc	4	Lucas & Dake Co Inc	front cover
			94
			62

PAGE

Ludington's I M Sons Inc	31
Macante Realty Co—Realtors	94
Maier Funeral Directors	44
Manufacturers Tool & Die Co Inc	72
Markin's Agency Inc	59
Marks & Fuller Inc	37
Mathews & Boucher	48
Mattle A J & Son	42
McCurdy & Co Inc	35
McIntosh C E Corp	98
Mechanics Savings Bank of Rochester N Y The	15
Mike and Joe Truck Auto Parts	5
Miller Peerless Products Inc	68
Monroe Abstract & Title Corporation	2
Monroe County Savings Bank	10
Moone E C Inc	60
Morse C H & Son	96
Morse Sash & Door Co	25
Morse William B Lumber Co	66
Neun H P Co Inc	20
Normandie Apartment Hotel	50
Northwestern Mutual Life Insurance Co	front cover
O'Connell Electric Co	39
Odenbach Restaurants Inc	50
Otis Lumber Co	68
Otto Frederick A	33
Paine Drug Company The	37
Paviour R S & Son Inc	55
Perkins Erickson & Co	24
Plymouth Dairy Inc	32
Pomeroy Organization Inc	92
Powers Hotel	50
Provident Loan Society	64
Pye Harold A Agency	61
Reed F E Glass Co	47
Reilly Robert-Realtor	95
Richardson Corporation	99
Roby Sidney B Co The	74
Rochester Agency Inc	63
Rochester American Lumber Company Inc	68
Rochester Box & Lumber Co	20
Rochester Carting Co	101
Rochester Cleaning & Dyeing Co	28
Rochester Folding Box Co	21
Rochester Gas & Electric Corporation	46
Rochester German Publishing Co	78
Rochester Ice & Cold Storage Utilities Inc	29
Rochester Iron & Metal Co Inc	73
Rochester Lead Works Inc	73
Rochester Lumber Co	68
Rochester Radio & Television	90
Rochester Savings Bank	11
Rochester Sun Corp-Shopping News	79
Rochester Telephone Corporation	101
Rochester Times-Union	77
Rochester Trust & Safe Deposit Co	12
Rogers Herbert A-Realtor	93
Ruppert Harry P-Realtor	95
Ryan Carting Co	103
Sagamore Hotel	50

PAGE

Scheer E J Inc	64
Scheuerman C F Sons	44
Schiefer F W Machinery Co	72
Schlegel Mfg Co The	5
School of Commerce	97
Schwab Coal & Oil Co Inc	29
Scrantom's Book & Stationery Co Inc	20
Sears Roebuck and Co	35
Security Trust Company of Rochester	13
Sergeant Motor Corp	4
Shafer Co (William F and S George Shafer)	45
Sherwin-Williams Co The	85
Siblay Lindsey & Curr	34
Simonds Press The	89
Simpson Box & Lumber Co Inc	21
Sloan Samuel & Company	88
Smith, Gormly Co Inc	36
Smith J Hungerford Co	98
Smith John P Co Inc	89
Spiegel Insurance Agency	63
Standard Insurers Agency of New York Inc	61
Stecher Traung Lithograph Corp	64
Stewart, Hanford & Casler Inc	3
Stewart & Bennett Inc	31
Stone Company The	89
Streb Norbert Co	95
Stromberg-Carlson Co	90
Stuart-Oliver-Holtz Co	37
Sullivan H H Inc	19
Summerhays William Sons Corp	31
Symington-Gould Corporation The	90
Taylor Instrument Companies	100
Tice & Gates	26
Timmerman Eugene A	44
Tobin Packing Co Inc	73
Trott Thomas F	44
Union Tool Co The	70
Union Trust Company of Rochester	14
Upton Cold Storage Co Inc The	100
Valley Cadillac Corp The	4
VanHoesen F P Co Inc	83
Viall, George I & Sons Inc	85
Vick Clarence A	62
Vierhille & DeMallie Inc	68
Vorndran August	31
Walz & Krenzer Inc	69
Ward C P Inc	32
Weed and Company	47
West Chas C Coal Co Inc	29
White Wire Works Co The	103
Whiting-Buick Inc	4
Whitmore Rauber & Vicinus	26
Wilson J C Co	87
Wilson Rochester Floral Co Inc	41
Wolfert Brothers	60
Wray Henry & Son Inc	23
Wright & Alexander Company	88
Yates Coal Co The	27
Ziellinski Stephen	69
Zimmerli Business Furniture Corporation	80

INTRODUCTION

R. L. POLK & CO., publishers of more than 750 city, county, state and national Directories, present to subscribers and the general public, this, the 1944 edition of the Rochester City Directory.

Confidence in the growth of Rochester's industry and wealth, and in the advancement of its civic and social activities, will be maintained as sections of this Directory are consulted, for the Directory is a mirror truly reflecting Rochester to the world.

The enviable position occupied by R. L. POLK & CO.'S Directories in the estimation of the public throughout the country, has been established by rendering the best in Directory service. With an unrivaled organization, and having had the courteous and hearty co-operation of the business and professional men and residents, the publishers feel that the result of their labors will meet with the approval of every user, and that the Rochester Directory will fulfill its mission as a source of authentic information pertaining to the city.

Five Major Departments

The five major departments are arranged in the following order:—

THE MISCELLANEOUS DEPARTMENT, on white paper, pages 7 to 31, presents lists of city, county, state and federal officials, post office information, schools and institutions, with officers, courts holding sessions in the city, population tables, statistical review, and manufacturing, trade and civic surveys.

THE ALPHABETICAL LIST OF NAMES of residents and business and professional concerns, on white paper, is included in pages 33 to 955. This is the only record in existence that aims to show the name, marital status, occupation and addresses of each adult resident of Rochester, and the name, official personnel, nature and address of each firm and corporation in the city.

THE BUYERS' GUIDE beginning opposite page 956, printed on tinted paper in a separate series of pages from 1 to 104, contains the advertisements of leading banking, manufacturing, business and professional interests of Rochester. The advertisements are indexed under headings descriptive of the business represented. This is reference advertising at its best, and merits a survey by all buyers eager to familiarize themselves with sources of supply. In a great commercial and industrial center like Rochester, the necessity of having this kind of information immediately available is obvious. General appreciation of this fact is evidenced by the many reference users of this City Directory service.

THE CLASSIFIED BUSINESS DIRECTORY is included in pages 957 to 1059, on yellow paper. This department lists the names of all business and professional concerns in alphabetical order under appropriate headings. This feature constitutes an invaluable and indispensable catalog of the numerous interests of the community. The Directory is the common intermediary between buyer and seller. As such it plays an important part in the daily activities of the commercial and professional world. More buyers and sellers meet through the Classified Business Directory than through any other medium.

THE DIRECTORY OF HOUSEHOLDERS, INCLUDING STREET AND AVENUE GUIDE of Rochester and **STREETS AND AVENUES** of eight suburbs, on pink paper, covers pages 1069 to 1344. The names of the streets are arranged in alphabetical order; the numbers of the residences and business concerns are arranged in numerical order under the name of each street, and the names of the householders and concerns are placed opposite the numbers. The names of the intersecting streets appear at their respective crossing points on each street. A feature of this section is the designation of tenant-owned homes. A **NEW FEATURE** is the Postal Zone numbers preceding this section pages 1061 to 1067.

Municipal Publicity

The Directory reflects the achievements and ambitions of the city, depicting in unbiased terms what it has to offer as a place of residence, as a business location, as a manufacturing site and as an educational center. To broadcast this information, the publishers have placed copies of this issue of the Directory in Directory Libraries, where they are readily available for free public reference, and serve as perpetual and reliable advertisements of Rochester.

The Rochester Directory Library

Through the courtesy of the publishers of the Rochester City Directory, a Directory Library is maintained in the Public Library, for free reference by the general public. This is one of more than 500 Directory Libraries installed in the chief cities of the U. S. and Canada by members of the Association of North American Directory Publishers, under whose supervision the system is operated.

The publishers appreciatively acknowledge the recognition by those progressive business and professional men who have demonstrated their confidence in the City Directory as an advertising medium, with assurance that it will bring a commensurate return.

R. L. POLK & CO., INC.
Publishers

City Directory Statistical Review

*Suggested and Planned by American Community Advertising Association
Adopted by Association of North American Directory Publishers
Compiled by the Statistical Bureau of the Rochester Chamber of Commerce*

ROCHESTER, NEW YORK—"Where Quality Dominates"

PHYSICAL DATA

Population: 324,975 (1940 Federal Census).
Predominating Nationalities, Other Than Native: Italian, German, Canadian, Russian, Polish and English.
Area: 34 square miles.
Altitude: 500 to 679 feet.

CITY GOVERNMENT

Form of Government: City Manager.
Assessed Valuation: 1943, \$530,022,802.
City Tax Rate: 1943, \$30.42 per thousand (including \$1.00 for Civilian Defense).
Fire Department: All modern motorized equipment. Over 500 uniformed men; engine companies 22; trucks 10; hose 3; water tower 1; supply companies 2; protective companies 1.
Police Department: Force of 432 men; Teletype system centrally controlled; total 41 motor cars, including 28 patrol cars, radio equipped, 22 with two-way radios; 4 safety cars for accident prevention and investigation, all with two-way radio; 19 motorcycles, radio equipped.
City Parks: (See Paragraph Amusement and Recreation, and Public Parks and Squares in Index).
City's Net Debt August 1, 1943: \$51,164,652.
Water Supply: Pure water from city owned lake 30 miles distant, with capacity for 242,000,000 gallons, and an average daily pump of 30,000,000 gallons. Supplementary water supply from Lake Ontario. Additional industrial and fire fighting water supply from Genesee River. Approximately 550 miles of main; and ~~center estimated plant value of over~~ \$14,000,000.

FINANCIAL FACILITIES

Four Savings Banks, Six Trust Companies, Ten Savings & Loan Associations. For further details see Rochester Clearing House Association data on page 27 Miscellaneous Department.

EDUCATIONAL AND CULTURAL FACILITIES

Public Elementary Schools: 43.
Public Junior and Senior High Schools: 11.
Technical and Industrial High Schools: 1.
Vocational High School: 1. Junior Vocational School: 1.
School of Practical Nursing: 1.

Parochial Elementary Schools: 33.
Parochial Senior High Schools: 4.
Rochester School for the Deaf: 1.
Business Schools and Colleges: 8.
Mechanics Institute:
University of Rochester With Its Colleges:
Eastman School of Music.
Women's College of Arts and Sciences.
Men's College of Arts and Sciences.
College of Medicine and Dentistry.
Extension Division.
School of Nursing.
Division of Graduate Study.

Niagara University:

Nazareth College:

Colgate Rochester Divinity School:

Music Appreciation taught in all schools through the Civic Orchestra

St. Andrew's Preparatory and St. Bernard's Major Seminary:

Rochester Academy of Science with Sections on Botany, Entomology, Mineralogy, and making Microscope slides.

Rochester Science Center, Junior Science and Engineering Clubs.

Libraries:

Rochester Public Library in Rundel Memorial Building, and 11 Branch Libraries. (See Index.)

University of Rochester Libraries; River Campus, and ~~County Public Schools - 1944~~

Public School Libraries.

Art Library in Rundel Memorial Art Gallery.

Music Library, Eastman School of Music.

Appellate Division Law Library, Court House.

Rochester Law Library, Powers Building.

Art Galleries:

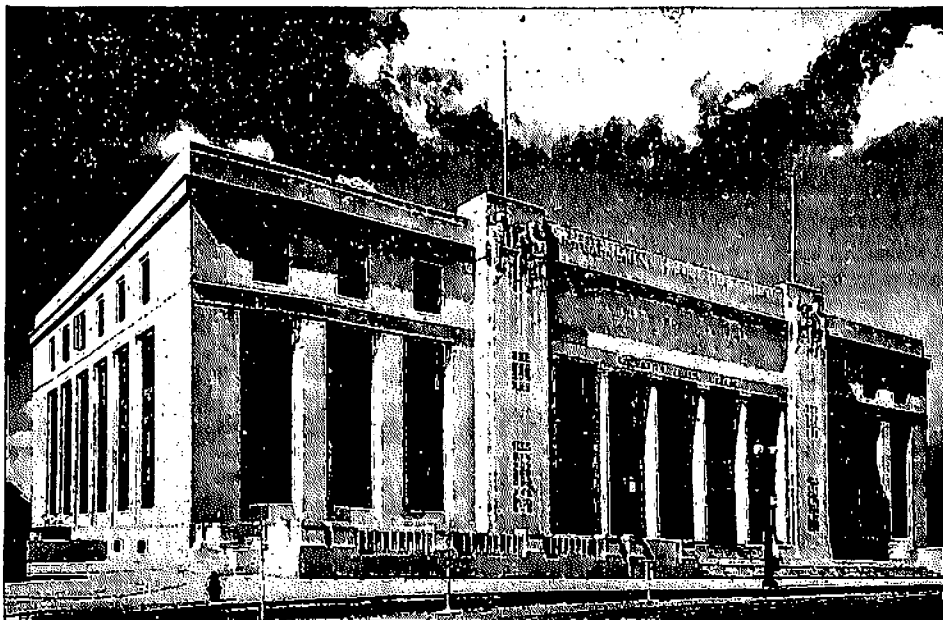
Memorial Art Gallery.

Mechanics Institute. Beyer Building Art Gallery.

Rundel Memorial Building Art Gallery.

Garden Clubs: Over 25.

Camera Clubs: 10 (plus public and high school Camera Clubs).



PUBLIC LIBRARY

TRADE AND INDUSTRY

803 manufacturing establishments, each of which produce annually goods valued at over \$5,000. Value of manufactured products, \$345,900,066.

Leads the world in manufacture of photographic film, cameras, mail chutes, optical goods, check protectors, dental equipment, thermometers, office systems, enameled steel tanks, and horticultural products.

Ranks high in production of men's clothing, buttons, shoes, machinery, telephone apparatus, radios, electrical supplies, railway signals, printing and lithography, malt and soft beverages.

Building Construction: Number of building permits for 1942, 2,099. Value of building permits issued, \$4,729,063.

Retail Outlets: 4,745.

Trading Area: Serves approximately 700,000 persons within a radius of 50 miles.

Metropolitan Area Serves: Over 400,000 persons within 10 mile radius.

Trade Jobbing Territory: Serves approximately 2,000,000 persons within 90 mile radius.

Hotels: 9 modern, with total 2,650 rooms.

PUBLIC UTILITIES, TRANSPORTATION AND COMMUNICATION

Post Office Receipts for Year Ending May 30, 1943: \$3,250,069. Located on Air Mail Route.

Telephones: May 30, 1943, 107,721.

GAS, ELECTRIC AND STEAM SERVICES

Gas: A dependable supply of 537 B.T.U. manufactured gas.

Electricity: Residential service is largely 60 cycle, alternating current. Various types of service are available to industrial and commercial establishments, depending on location and requirements.

Steam: District steam for heating and industrial processes is provided from four stations.

Railroads: 5, New York Central, Erie, Pennsylvania, Baltimore & Ohio and Lehigh Valley.

Local Transportation: Bus.

Subway: Owned by city and crosses city for interurban, passenger and freight service.

Bus Lines Entering City: 15.

Other Services:

Barge Canal Harbor and Warehouses in Center of City.

Port of Rochester on Lake Ontario, 7 miles from City

Center with Municipal Docks.

Daily Ferry Service to Canada.

Day and Night Boat Service to Canada and Thousand Islands, Seasonal.

Flying Field: A first class airport, municipally owned and operated. 300 acres, including 3 modern hangars.



UPPER FALLS OF THE GENESEE RIVER
ONE OF THE THREE FALLS IN THE HEART OF THE CITY

AMUSEMENT AND RECREATION

Parks: 83 in city limits (see Public Parks and Squares).

County Parks: Six, three on Lake Ontario.

Public baseball diamonds and tennis courts, in all larger parks.

Golf Courses: 3 city courses in parks, and 10 private golf courses close to city.

Theatres with Facilities for Stage Productions: 6, largest seating capacity 4,200.

Motion Picture Houses: 31.

Convention Hall: Municipally owned.

International League Baseball with stadium equipped for night play.

GENERAL INFORMATION

Chamber of Commerce: Membership approximately 3,000; incorporated 1888. Objective: To make Rochester a better place in which to live and do business. Operates under guidance of 40 standing committees.

Churches: 186 of all denominations.

Hospitals: 7 registered with the State Regents. (See Classified Business or City Government.)

Dental Dispensary: 1.

Luncheon Clubs: (See Clubs in Index.)

Newspapers: 2 English dailies, 1 legal and local daily, 1 German daily, 1 Italian weekly, 1 Shopping Weekly, Ward and Neighborhood weekly papers.

Radio Broadcasting Stations: 3—WHAM, WHEC, WSAY.

Island Park	1,631
Kensington	938
King's Point	1,247
Lake Success	203
Lattinotown	613
Laurel Hollow	110
Lawrence	3,649
Long Beach	9,036
Malverne	14,557
Malverne	6,153
Massapequa Park	488
Matinecock	428
Mill Neck	101
Mineola	10,084
Munsey Park	1,456
Muttontown	335
New Hyde Park	4,691
North Hempstead	83,385
North Hills	295
Old Brookville	356
Old Westbury	1,017
Oyster Bay	42,584
Oyster Bay Cove	466
Plandome	897
Plandome Heights	317
Plandome Manor	262
Fort Washington	
North	628
Rockville Centre	18,613
Roslyn	972
Roslyn Estates	464
Roslyn Harbor	303
Russell Gardens	556
Sands Point	628
Sea Cliff	4,416
Saddle Rock	59
South Floral Park	510
Stewart Manor	1,635
Thomaston	1,159
Upper Brookville	456
Valley Stream	18,679
Westbury	4,524
Williston Park	5,750
Woodburgh	702
	406,748

New York
 Manhattan borough
 (part of New
 York city) ..1,889,924

New York City
 Bronx ..1,384,711
 Central Park ..1,099,888
 Manhattan ..1,889,924
 Queens ..1,297,634
 Richmond ..174,441
 7,454,995

Niagara	
Barker	452
Cambria	1,925
Hartland	2,527
Lewiston	4,448
*Lockport	24,379
Lockport	3,180
Middleport	1,575
Newfane	4,635
Niagara	2,618
*Niagara Falls	78,029
*N. Tonawanda	20,254
Pendleton	1,516
Porter	3,361
Royalton	4,617
Somerset	2,041
Wheatfield	3,077
Wilson	3,061
Youngstown	799
Tuscarora Indian Reservation	462
	160,110

Oneida	
Annsville	1,217
Augusta	1,900
Ava	520
Boonville	3,201
Bridgewater	743
Camden	3,096
Clayville	711
Clinton	1,478
Deerfield	1,147
Florence	620
Floyd	1,641
Forestport	828
Holland Patent	730
Kirkland	388
Lee	5,211
Marcy	1,322
Marshall	4,528
New Hartford	1,541
New York Mills	8,109
Oneida Castle	3,828
Oriskany	556
Oriskany Falls	1,115
Paris	930
Prospect	3,073
Red Hook	285
Remsen	1,056
*Rome	788
	34,214

Sangerfield	1,961
Sherill	2,184
Steuben	581
Trenton	2,295
*Utica	100,518
Vernon	5,124
Vernon	3,636
Vienna	1,645
Waterville	1,489
Western	1,103
Westmoreland	2,235
Whitesboro	3,532
Whitestown	11,580
Yorkville	3,511
	203,636

Onondaga	
Baldwinsville	3,840
Camillus	4,394
Cicero	4,346
Clay	4,050
DeWitt	10,836
East Syracuse	4,529
Filbridge	2,375
Fabius	1,346
Fayetteville	2,172
Geddes	11,237
Jordan	1,115
Lafayette	1,550
Liverpool	2,500
Lysander	5,207
Manlius	7,845
Marcellus	8,048
Minna	802
North Syracuse	2,083
Onondaga	6,905
Oriskany	873
Pompey	2,099
Salina	11,168
Skaneateles	4,639
Solvay	8,201
Spafford	742
*Syracuse	205,987
Tully	1,430
VanBuren	3,691
Onondaga Indian Reservation	762
	295,108

Orleans	
Albion	5,965
Barre	1,645
Carlton	1,640
Clarendon	1,176
Gaines	1,667
Holley	1,230
Kendall	1,341
Lyndonville	745
Medina	5,871
Murray	2,764
Ridgeway	5,826
Shelby	3,961
Yates	1,975
	27,760

Oswego	
Albion	1,094
Altmar	393
Amboy	493
Boylston	365
Central Square	668
Cleveland	440
Constantia	1,538
*Fulton	13,362
Granby	2,220
Hannibal	2,010
Hastings	2,361
Lacona	413
Mexico	2,710
Minetto	1,052
New Haven	1,194
Orwell	806
*Oswego	22,062
Palermo	1,972
Parish	1,148
Phoenix	1,189
Pulaski	1,757
Redfield	1,895
Richland	617
Sandy Creek	3,848
Scriba	1,821
Solvay	8,219
West Monroe	2,184
Williamstown	2,659
	731
	710
	71,275

Otsego	
Burlington	956
Butternuts	369
Cherry Valley	274
Cooperstown	2,799
Decatur	324
Edmeston	1,580
Exeter	760
Gilbertsville	377
Hartwick	1,438
Laurens	1,395
Maryland	1,460
Middlefield	1,592
Millford	1,666
Morris	1,376
New Lisbon	801
*Oneonta	11,731
Oneonta	2,673
Otego	1,508
Otsego	4,074
Pittsfield	796
Plainfield	670
Richfield	1,970
Richfield Springs	1,209
Roseboom	472
Schenes	534
Springfield	1,135
Unadilla	2,277
Westford	2,885
Worcester	2,038
	46,082

Putnam	
Brewster	1,863
Carmel	4,195
Cold Spring	1,897
Kent	1,546
Nelsonville	45
Patterson	1,328
Phillipstown	4,246
Putnam Valley	1,187
Southeast	4,053
	16,555

Queens borough (part of New York city) ..1,297,634	
-------------------------------------------------------------------	--

Richmond	
Pittstown	2,491
Poestenkill	1,438
*Rensselaer	10,788
Sandlake	2,438
Schaghticoke	3,246
Schodack	5,081
Stephentown	1,181
Troy	70,304
Valley Falls	564
	121,834

Rockland	
Clarkstown	12,251
Grand View-on-Hudson	588
Haverstraw	12,443
Hillburn	1,161
Nyack	5,206
Orangetown	26,662
Piermont	1,876
Ramapo	18,007
Sloatsburg	1,771
South Nyack	2,093
Spring Valley	4,808
Stony Point	4,898
Suffern	3,788
Upper Nyack	924
West Haverstraw	2,533
	74,261

St. Lawrence	
Brasher	1,892
Canton	6,130
Clare	139
Clifton	1,005
Colton	1,096
DeKalb	2,118
DePeyster	768
Edwards	1,410
Fine	1,208
Fowler	1,772
Gouverneur	5,906
Hammond	1,260
Herkon	1,147
Heuvelton	620
Hopkinton	1,044
Lawrence	1,431
Lisbon	2,633
Louisville	1,589
Macomb	891
Madrid	1,333
Massena	12,979
Morristown	1,635
Norfolk	3,427
Norwood	1,905
*Orleansburg	16,346
Oswegatchie	2,193
Parisville	1,309
Piercefield	667
Pierrepont	1,312
Pitcairn	521
Potsdam	9,609
Rensselaer Falls	295
Richville	274
Rosie	706
Russell	1,529
Stockholm	2,406
Waddington	1,645
	91,096

Saratoga	
Ballston Spa	2,630
Charlton	1,083
Clifton Park	2,253
Corinth	4,478
Day	476
Edinburg	534
Galway	1,234
Greenfield	1,696
Hadley	679
Halfmoon	1,969
Malta	1,354
*Mechanicville	7,449
Milton	5,708
Moreau	4,930
Northumberland	1,109
Providence	409
Saratoga	3,212
*Saratoga Springs	13,705
Schuylerville	1,447
South Glens Falls	3,051
Stillwater	3,709
Victory	5,700
Waterford	5,769
Wilton	1,231
	65,606

Schenectady	
Delanson	326
Duanesburg	2,141
Glenville	13,343
Niskayuna	6,348

POPULATION OF UNITED STATES

UNITED STATES CENSUS OF 1930 and 1940

TOTAL POPULATION in 1930, 124,746,053; in 1940, 131,669,275

STATES	POPULATION		STATES	POPULATION	
	1940	1930		1940	1930
Alabama	2,832,061	2,646,248	New York	13,479,142	12,588,066
Arizona	499,261	435,573	North Carolina	3,571,623	3,170,276
Arkansas	1,949,387	1,854,482	North Dakota	641,935	680,845
California	6,907,387	5,677,251	Ohio	6,907,612	6,646,697
Colorado	1,123,296	1,035,791	Oklahoma	2,336,434	2,396,040
Connecticut	1,709,242	1,606,903	Oregon	1,039,684	853,786
Delaware	266,505	238,380	Pennsylvania	9,900,189	9,631,350
District of Columbia	663,091	486,369	Rhode Island	713,346	687,497
Florida	1,897,414	1,469,211	South Carolina	1,899,804	1,738,785
Georgia	3,123,723	2,608,506	South Dakota	642,961	692,849
Idaho	624,873	445,032	Tennessee	2,915,841	2,618,556
Illinois	7,897,241	7,630,654	Texas	6,414,824	5,824,715
Indiana	3,427,706	3,298,503	Utah	550,310	507,847
Iowa	2,538,268	2,470,939	Vermont	359,231	359,611
Kansas	1,801,028	1,880,999	Virginia	2,677,773	2,421,861
Kentucky	2,845,627	2,614,589	Washington	1,736,191	1,563,396
Louisiana	2,363,880	2,101,593	West Virginia	1,901,974	1,729,205
Maine	847,226	797,428	Wisconsin	3,137,587	2,939,006
Maryland	1,821,244	1,631,526	Wyoming	250,742	225,565
Massachusetts	4,316,721	4,249,614			
Michigan	5,256,106	4,842,325	Total for States	131,669,275	122,775,046
Minnesota	2,792,300	2,563,953			
Mississippi	2,183,796	2,009,821			
Missouri	3,784,664	3,629,367			
Montana	559,456	537,606			
Nebraska	1,315,834	1,377,963			
Nevada	110,247	91,058			
New Hampshire	491,524	465,293			
New Jersey	4,160,165	4,041,334			
New Mexico	531,818	423,317			

Central Library of Rochester and Monroe County - City Directory Collection - 1944

POPULATION OF ROCHESTER AND MONROE COUNTY

United States Census of 1920, 1930 and 1940

Wards	1920	1930	1940	Towns	1920	1930	1940
1.....	2,113	1,346	1,120	Brighton.....	2,911	9,003	13,132
2.....	3,821	2,163	1,227	Chili.....	1,780	2,483	3,392
3.....	7,900	7,775	8,127	Clarkson.....	1,403	1,456	1,449
4.....	6,065	4,151	4,171	Gates.....	1,419	3,670	4,965
5.....	10,876	8,871	9,021	Greene.....	3,350	12,075	14,925
6.....	8,896	7,109	7,520	Hamlin.....	1,999	2,036	2,080
7.....	8,281	6,861	5,038	Henrietta.....	1,910	1,924	2,728
8.....	16,787	14,561	15,872	Irondequoit.....	5,123	17,935	23,376
9.....	8,444	7,379	7,053	Mendon.....	2,509	2,388	2,700
10.....	29,404	34,040	34,089	Ogden.....	2,681	3,159	3,435
11.....	12,246	11,634	11,497	Parma.....	2,923	3,225	3,337
12.....	17,777	17,376	18,503	Penfield.....	2,037	3,207	3,774
13.....	5,851	5,061	5,366	Perinton.....	7,799	9,743	10,170
14.....	17,268	20,100	21,552	Pittsford.....	4,614	7,338	7,741
15.....	9,505	9,277	9,183	Riga.....	1,649	1,710	1,669
16.....	12,361	9,705	9,235	Rush.....	2,091	1,901	1,791
17.....	21,681	26,299	24,303	Sweden.....	3,984	4,608	4,688
18.....	29,636	35,310	36,547	Webster.....	3,976	4,675	5,530
19.....	29,402	39,623	39,580	Wheatland.....	2,076	2,361	2,323
20.....	11,468	11,872	11,379				
21.....	7,011	11,524	11,755	Rural total.....	56,284	94,936	113,275
22.....	12,024	20,030	19,970	Rochester.....	295,750	325,019	324,975
23.....	3,511	6,482	6,793				
24.....	4,924	7,546	7,571	County.....	352,034	419,955	438,230
Total.....	295,750	325,019	324,975				

METEOROLOGICAL RECORD

Furnished by the U. S. Weather Bureau Office, Municipal Airport.
For the year ending May 31, 1943. Hours of Observation: Continuous hourly, 24-hour service.

MONTH	THERMOMETER					BAROMETER (STATION*)			WIND		AM'T of RAIN and MELTED SNOW	
	Maximum	Date	Minimum	Date	Mean	Highest	Lowest	Mean	Prevailing Direction	Maximum Ve- locity (miles per hour)	Amount in Inches	No. of days on which rain or snow fell
1942												
June	94	30	46	16	68	29.74	29.10	29.40	S.W.	30	1.03	10
July	95	13	47	7	71	29.70	29.11	29.42	W.	37	2.84	18
August	91	15	43	25	69	29.84	29.17	29.48	S.W.	30	1.66	14
September	90	17	31	29	63	29.97	28.91	29.47	S.W.	33	2.72	18
October	79	8	29	27	52	30.00	28.88	29.46	W.	34	3.22	16
November	69	20	16	15	39	30.02	28.82	29.46	W.	42	3.40	22
December	41	29	-16	20	24	30.08	28.35	29.58	W.	44	4.48	29
1943												
January	46	25	-6	9	20	30.01	29.62	29.45	W.	45	2.06	26
February	59	23	-14	15	26	29.98	28.62	29.30	W.	41	2.05	22
March	73	31	-3	4	32	30.20	28.67	29.50	W.	57	2.59	20
April	71	24	17	6	39	29.81	28.42	29.36	W.	42	4.81	25
May	82	6	30	1	56	29.87	28.90	29.42	W.	37	5.45	24
Summary	95	July 13	-16	Dec. 20	47	30.20	28.35	29.44	W.	57	36.31	253

*Correction to Sea Level about six-tenths of an inch. Rochester lies about 510 feet above sea level.

During the year June 1, 1942—May 31, 1943 there were 62 clear days; 105 partly cloudy; 198 cloudy.

Rain or snow fell on 170 days to the amount of .01 inch or more; on 120 days to the amount of .04 inch or more. Thunderstorms occurred on 25 days and hail on 1 day. The total wind movement was 91,201 miles. Average cloudiness for the year was 69% and average relative humidity 75%. The maximum temperature was freezing or below on 57 days and the minimum temperature freezing or below on 149 days. Average temperature for 70 years 46.1 degrees; average precipitation for 70 years 32.83 inches.

LEGAL HOLIDAYS

There are eleven public holidays—New Year's Day, 1st of January; Lincoln's Birthday, 12th of February; Washington's Birthday, 22d of February; Memorial Day, 30th of May; Independence Day, 4th of July; Labor Day, first Monday in September; Columbus Day, October 12th; Tuesday following the first Monday in November, or day of State election; Armistice Day, November 11th; any day appointed by the Governor of the State or President of the United States, as a day of public fast, or Thanksgiving; Christmas day, 25th of December; also every Saturday, from 12 o'clock noon until 12 o'clock midnight.

When a public holiday falls upon Sunday, the following Monday becomes a public holiday.

POLK'S ROCHESTER CITY DIRECTORY 1944

Copyright, 1943, by R. L. Polk & Co., Inc.

Miscellaneous Information

For information not found in this department see regular Alphabetical Section or under proper headings in the Classified Business Directory

MUNICIPAL
ELECTION
FIRST TUESDAY
AFTER THE
FIRST MONDAY
OF NOVEMBER,
IN AN ODD-
NUMBERED
YEAR

Central Library



Collection - 1944

CITY
GOVERNMENT
ORGANIZED
SECOND
DAY OF
JANUARY
IN AN EVEN
NUMBERED
YEAR

MAYOR, SAMUEL B. DICKER

Salary \$750. Office, 8 City Hall; Office Hours, 9 AM to 5 PM

VICE MAYOR, FRANK E. VANLARE

The Mayor is the presiding officer of the City Council and is chosen by the Council

CITY COUNCIL

Councilmen at Large—Gregory F. Mills, Ross E. Erwin, Wm. A. Doane, Chas. Lambase, Norman A. Kreckman. Terms expire Dec 31, 1945.

District Councilmen—Northeast District (wards 5, 7, 8, 17, 22) Henry L. Schlueter. East District (wards 6, 12, 16, 18, 21) Saml B. Dieker. Northwest District (wards 1, 2, 9, 10, 15, 20, 23, 24) Fredk J. Ruppel. South District (wards 3, 4, 11, 13, 14, 19) Frank E. VanLare. Salaries, \$1,500, term expires Dec 31, 1947.

Regular Meetings of the Council—Regular meetings shall be held at 8 PM in the Council Chamber Room, No 30 City Hall, on the second and fourth Tuesday of each month except that during the months of July and August regular meetings shall be held on the second Tuesday of the month; and also at such other time as the Council may by adjournment to a day certain appoint. When the date for a regular meeting falls on a legal holiday the meeting shall be held on the following day.

Special Meetings—Special meetings may be called at any time by the Mayor, the City Manager or any three Councilmen. The City Clerk shall cause the written notice thereof specifying the object of the meeting, to be served upon each member personally or to be delivered at his usual place of residence at least twenty-four hours before the time fixed for such meeting. At such special meeting no business other than that named in the notice of meeting shall be transacted.

City Manager—Louis B. Cartwright, salary, \$10,000. Office 8 City Hall; office hours, 9 AM to 5 PM

Secretary, Evelyn A. Urtel
The City Manager is the Chief Executive Officer of the City; appointed by the City Council. All officers of the city not elected by the people (except as otherwise provided) are appointed by the City Manager.

City Clerk—Thomas P. O'Leary; office hours, 9 AM to 5 PM; office, 31 City Hall, appointed biennially by the Council; term expires Dec 31, 1943.

Deputy City Clerk—Robt B. Clifford; Second Depy, Ralph B. Schauman, appointed by City Clerk

Secretary—Harland J. Boardman; appointed by the City Clerk

Clerk—Ettie J. Smyth
Stenographers—Evelyn L. Olin, Helen E. Gaines
Examining Board of Stationary Engineers—John G. Weller; Geo. D. Haas, Wm. J. Gessner, terms expire Dec 31, 1944; appointed by the Commissioner of Public Safety. Meets first and third Monday at 7:30 PM at 34 Court

Examination fee, \$3 and \$2; renewals, \$2 and \$1

DEPARTMENT OF COMMERCE

Office, 64 Court

Commissioner—Harold S. W. MacFarlin

Bureau of Weights and Measures

Rochester Food Terminal, near NYC RR

City Sealer—Anthony C. Samendink

Division of Municipal Enterprises

54 Court

Acting Director—August Wagener
Airport—Edwin Houters, acting mgr
Port of Rochester—Joseph Biel, mgr
Bureau of Markets—Henry B. Stevens, Market Master

Division of Real Estate

30 City Hall

Manager—Edw. F. Perdue. Acting Manager, G. Edw. Kammer

Division of Public Relations

54 Court

Director—

Division of Planning and Zoning

54 Court

Director—Aug. H. Wagener
Superintendent of Zoning—

Commissioner of Railways

Office, 84 State

Commissioner—Harold S. W. MacFarlin
Transportation Engineer—Willie Collins

DEPARTMENT OF FINANCE

Comptroller's Office and Div. Audit and Accounts
Office, 28 City Hall, Hours 9 AM to 5 PM
Comptroller—; appointed by City Manager.
Secretary—Anna B. McGrath. Auditor—Fred W. Erath

Division of Treasury

Office, 16 City Hall; Hours 9 AM to 3 PM
 City Treasurer—Haskell H Marks, appointed by the Comptroller. Deputy Treasurer—Fredk J Smith
 Cashier—Lee J Rowley. Assistant Cashier—George A Fox
 City taxes payable without interest in four installments; the first during the month of January; the second during the month of March; the third during the month of June; and the fourth during the month of August. Beginning with the first day of February on the first installment, the first day of April on the second installment, the first day of July on the third installment and the first day of September on the fourth installment one percentum per month shall be added up to and including November. After November 15th, interest on all unpaid taxes and accrued penalties thereto shall be charged at the rate of ten per centum per annum

Division of Purchase and Supply

Office, 36 City Hall
 Purchasing Agent—W Raymond Whitley

Department of Assessment and Taxation

Office, 26 City Hall; Hours 9 AM to 4 PM
 Assessor—Wm H Woodworth; Deputy Assessors, Jos Fazio, Martin B O'Neill

CIVIL SERVICE COMMISSION

34 Court, 3d fl
 Commissioners—Alfred A Williams, term expires May 31, 1948; Fredk D Lamb, term expires May 31, 1946; Jos L Guzzetta (chairman), term expires May 31, 1944. Chief Examiner—Louis E Lozarus. Sec—Helen M Murphy

DEPARTMENT OF PUBLIC WORKS

Office, 54 Court, rm 124. Hours, 9 AM to 5 PM
 Commissioner of Public Works—
 salary, \$7,500; appointed by the City Manager
 Head Clerk—Edward F Nier
 Secretary—Leslie J Shearer

Division of Engineering

Office, 53 City Hall; Hours 8.00 AM to 5 PM
 City Engineer—Henry L Howe
 Asst Eng Local Improvements—Elmer L Oliver
 Structural Designer—Eldred H Walker
 Supvr Testing Laboratory—H Walter Hughes

Division of Maintenance and Operation

Office, 54 Court rm 120
 Director—John V Lewis
 Supervisor of Maintenance—
 Superintendent of Garbage Collection—John Stucke
 Supt of Ash and Rubbish Collection—Harry O Bagley
 Supt of Sewers—E M VanGelder
 Supt of Street Lighting—Ruden W Post
 Supt of Motor Division—Frank Rowe
 Asst Engineer—B Mack Ryan

Division of Water

Office, 10 Felix, Hours 9 AM to 5 PM
 Superintendent of Water Works—Lewis B Smith, appointed by the Commissioner of Public Works
 Asst Office Engineer—A P Mussi
 Accounting Office, 10 Felix; Hours 9 AM to 5 PM
 Managing Clerk—J Arthur Barth
 Engineer Holly Works—Frank Swan
 Foreman of Repair Shop and Supt Meter Shop—Norman Price

DEPARTMENT OF LAW

Office, 46 City Hall; Hours, 9 AM to 5 PM
 Corporation Counsel—Chas B Forsyth
 Deputies—Honora A Miller, Max Cohen; Saml D DiPasquale, Assistants, Saml J Danno, Clarence H Hardell, Jack Harrison, Matthew Kowalski, Gordon Zimmerman, David Schenbergs
 Secretary—Geo J Hanlon

City Court of Rochester Civil Branch

Court Room, 34 Court 2d fl
 Judges—James P O'Connor, Arthur L Wilder; terms expire Dec 31, 1947; Geo D Ogden, Thos F Culhane, Mehl L Rogers; terms expire Dec 31, 1945. Elected by the people for the term of six years
 Clerk—Wm J Bell; appointed by the court
 Reporters—Elmer J Rogers, Alan G Bowance, Jos Schreiber, Bertha H Gerber

City Court of Rochester Criminal Branch

137 Exchange
 Judge City Court—City Court Judges alternate each month
 Clerk—Saml Cross; appointed by the Court
 Deputy Clerk—Fred E Wegner
 Deputy Clerk and Interpreter—Pak Claudio, Edmund F Lorenza
 Interpreter—Glenn H Esparoff
 Confidential Clerk—E Leighton Gridley
 Judge's Clerk—Chas A Engel
 Stenographers—Justus S Allen, Francis W Smith

Bureau of Probation

34 Court, rms 101 and 102
 Chief Probation Officer—E L Verton Beebe
 Probation Officers—R Delmar Barker, Phillip Federbusch, Thomas Salter, J Dwight Kemble, Wm Schulz, Helen F McLaughlin, John L Donlon, Porter W VanZandt. Cashier, Helen A Lorscheider. Sten, Bella Saragovitz, Genevieve L Baechle

Traffic Violations Bureau

137 Exchange
 City Judge's Clerks—Jos E Leinen, Frank A Albrecht, John S Stubbs
 Stenographer—Henry R Werth Jr

DEPARTMENT OF PUBLIC SAFETY
 (Police, Fire, Health, Parks, Buildings, Playgrounds, Fire and Police Telegraph)

Office 34 City Hall
 Commissioner of Public Safety—Thos C Woods, appointed by the City Manager
 Surgeon—Wm I Dean, MD

Bureau of Buildings

Office, 60 S Fitzhugh St
 Supt of Buildings—Walker S Lee
 Office Mgr—Michl F Cleary
 Building Board—Chas A Carpenter, chairman. Danl J Meagher, Howard S Thomas, Benj G Stallman. Appointed by the City Manager for terms of two years. Terms expire Dec 31, 1948. Wm H Roberts, Commissioner of Public Works; Walker S Lee, Superintendent of Buildings; Max Cohen, Deputy Corporation Counsel; and Frank B Davis, Engineer of the Bureau of Building; also sit with the Board. Meetings are held the second and fourth Friday of each month at 10:30 AM, at 60 S Fitzhugh

Bureau of Police

Central Police Station, 137 Exchange Street
 Chief of Police—Henry T Copenhagen. Deputy Chief of police—William R Miller. Inspectors, Geo E Steinmiller, Wm McLaughlin, Capt Edw Fisher, Harold J Burns, Chas Roth. Detective Bureau—Capt Edward W Collins. Supervising Detectives—Emil Lambiase, Chas Austin, J Leo Hehir. Detectives Geo R Smylie, Jas Luciano, Michl Lodato, Jas Smith, Leo Shay, Wm Pribus, Wesley W Kuebel, Wm Hussey, Wm F Popp, Geo G Fordham, Eugene Badhorn, Ambrose Armstrong, John Koepplin, George O'Hara, James Lord, Francis Heaney, Victor Raycroft, Maurice Scanlon, Charles Sweeney, John Fleming, Chas Armstrong, Leo Davis, Irving Engeman, Eugene Fordham, Thomas Hunt, Henry VanAuker, Joseph Clancy, Clarence Schlegel, William Foubister, Charles Yockel, Joseph Hagerty, Harry Schmidt, Wm Connelley, Edward Dailey, Edward Lanson, Jacob Roberts, John Rowan, Thos Burke, Charles Hogan. Women Police Officers—Rose C Knobles, Mrs Florence Williams. Traffic Squad—Captain, George Hesel, John Culhane. Traffic Supervisors—Elmer Irish, Jos Baglin, Albert Daniels. Traffic Lieuts—Michl J Moynihan, Herbert Leary. Property Lieut—Jos W Sheridan. Lieut of Training School—Bryan E Ford. Chief Sanitary Inspector—Chas F Masulre.

Court Officers—John Fitzsimons, Wm C Snider. Bertillon Lieuts—Wm A Winfield, Geo W Keenan. Turnkeys—Geo Kohlman, Jos Holenstein, Chas Griep. License Officers—Raymond Hirschman. Albert Bartlett. Matrons—Mary Kerber, Anna McNamara, Eliz Duskey, Helen Laybourn

Police Precincts

First Precinct—137 Exchange. Inspectors—Geo E Steinmiller, Harold J Burns. Captains—T Herbert Killip, Geo Ruthenberg. Lieutenants—Forrest Burne, Paul Hutchinson. Sergeants—Camillo Roessner, John Evans, Jos Yurgalitis. Detectives—Alex Tomczak, Wm Sponenburgh, I Jas Martin.
 Second Precinct—213 Franklin. Inspectors—Wm McLaughlin, Chas Roth. Captain—Edwin M Wilder. Lieutenant—Cleon H Wilkin. Sergeants—Ray Pemberton, Robt Muhs. Detectives—Frank Hohman, Frank Piotraske, Lester Louth, Anthony Blondi.
 Third Precinct—740 University av. Captain—Jas R Moran. Lieutenant—John Sullivan. Sergeants—Lewis P Fleckenstein, Frank Puff, Elwood A Shepard. Detectives—Edmund Schneider, Milton Curtiss
 Fourth Precinct—480 Joseph av. Captain—Wm J Pohl. Lieutenant—Thomas Billington. Sergeants—Hiram Moran, Albert C Heinkel, Charles Galloway. Detective—Clarence O'Toole. Special Officer—John Donlon.
 Fifth Precinct—464 Lyell av. Captain—Edwd J Dobbertin. Lieutenant—Jos Lang. Sergeants—Leo Renaud, Arthur Schulten, Frank Fogarty. Special Officers—David Hughey, Wm Higgins
 First Inspection District, Fifth Precinct—50 Stutson. Captain—Edw H Fisher. Lieut, Geo A Mensing. Sergeants—Frank Janson, Wm Wilson, Edw G Schafer.
 Sixth Precinct—140 Bronson av. Captain, Edward D Bahringer. Lieutenant—Victor Agette. Sergeants, Michl J Boehm, Vance Keeling. Special Officers—Roy M Dye, Victor Dombroski

Bureau of Fire

185 North
 Chief—John A Slattery. Deputy Chiefs—Wm E J O'Leary, Alex Rutherford, Thos H Coates. Battalion Chiefs—Frank V Gallagher, Frank B Kelly, Jos A Long, Edw G Selke, Arth Ebsberger, Clarence B Norman, John C Mueller, Edw Adams, Walter Adams, Geo L Holzschuh, Jas Murray, W Percy Norris

Instructors of Training School—Ambrose E Foss, Lawrence E Rellly
 Chief Clerk—Edw J Muolo, Leo F Mulligan

Engine Companies

Engine Co. No. 1.—83 Stone; Raymond T Schleyer, captain
 Engine Co. No. 2.—676 Clinton av N; Homer J Sprague, captain
 Engine Co. No. 3.—Plymouth av N cor Platt; Stephen Eling, captain
 Engine Co. No. 4.—25 Ford st; Edward M Legler, captain
 Engine Co. No. 5.—262 Lyell av; George A Fichtner, captain
 Engine Co. No. 6.—785 University av; Michl Darcy, captain
 Engine Co. No. 7.—373 Plymouth av S; James B Rickard, captain
 Engine Co. No. 8.—357 Gregory st; James O'Keefe, captain
 Engine Co. No. 9.—50 Parsells av; Saml J Gosnell, captain
 Engine Co. No. 10.—5 Driving Park av; Albert E Hoesterey, captain
 Engine Co. No. 13.—109 Genesee st; Ira McNally, captain
 Engine Co. No. 14.—61 Central av; Lemuel B Wilson, captain
 Engine Co. No. 15.—715 Monroe avenue, Paul Smith, captain
 Engine Co. No. 16.—704 Hudson av; Danl McMahon, captain
 Engine Co. No. 17.—185 North, Wm M Korn, captain
 Engine Co. No. 18.—Child cor Campbell; Eugene Donnelly, captain
 Engine Co. No. 19.—East av near Probert; Geo Kummer, captain
 Engine Co. No. 20.—Dewey av cor Bryan; Frank A Ryan, captain
 Engine Co. No. 21.—Genesee cor Barton; Norman Rogers, captain
 Engine Co. No. 22.—58 Stutson st; Clarence T Mangan, captain
 Engine Co. No. 23.—156 Exchange st; Jay I Dickerson, captain
 Engine Co. No. 24.—300 Ridge rd; John L Sullivan, captain
 Engine Co. No. 25.—1492 Clifford av; William Kalemback, captain
 Truck Co. No. 1.—188 StPaul; Harry Stahlecker, captain
 Truck Co No. 2.—185 North; Alfred G Relfsteck, captain
 Truck Co No 3.—260 Lyell av; Adelbert McMillan, captain
 Truck Co No 4—713 Monroe av; Earl Webber, captain
 Truck Co No 5—105 Genesee st; Joseph B Lara, captain
 Truck Co No 6—Hudson av cor Bernard; August Ruh, captain
 Truck Co No 7—1261 South av; Jos F Hauptenthal, captain
 Truck Co No 8—Dewey av cor Bryan; Fred W Stark, captain
 Truck Co No 9—212 Webster av; Adolph A May, captain
 Truck Co No 10—156 Exchange; Albert W Young, captain
 Protective Sack and Bucket Co—185 North; Frank Tegg, captain
 Water Tower No 1—185 North; Wm J Sweeney, captain
 Supply Co No 1—25 Ford st
 Supply Co No 2—35 Stone
 Fire Prevention Bureau—188 StPaul; Frank V Gallaher, battalion chief; Louis Hawley, captain; Edw A Gartland, lieut. Floating Captains, Benj Bloom, Patk Foley, John J Hayden, Edw Eber. Floating Lieutenants, Frank G Dart, John P O'Brien, Harold Maxwell, Alf Graham

Bureau of Fire and Police Telegraph

315 Cumberland
 Superintendent—Jeremiah J McCarthy. Assistant Superintendent—John J McInty. Chief Operator—Wm T Hall

Bureau of Health

Office, 82 Chestnut; Hours, 8.80 AM to 9 PM
 Health Officer—Arthur M Johnson, MD. Deputy Health Officers—Harry C Hummel, MD; Norris G Orhard, MD; Secretary, Lucia Lagrasso.
 Clerk—Elizabeth C Smith. Telephone Operator—Adelaide Walters. Stenographers—Carol E Sherman, Mildred I Reynolds, Elvira Schauf, Mary A Lynch. Registrar of Vital Statistics—Henry Lieberwurst. Deputy Registrars—Arth Bernhard, Anthony Voelki. Technician—Adeline Sedgwick. Typist, Beatrice C Sullivan
 Health Inspectors—John Quinn, Herbert E Olney, Max Shapiro, Joseph J Larson, A W Ollner, N Rittersbach, Wm L Lafferty, L J Fischer, David B Hill, Frederick Leathers, Nathan Lawrence, Walter J Corcoran, Edgar Dobbertin, Leo C Andrus, Jos W Freeman, Fermln J Lanigan
 Janitor—Chas M Dolan
 Tuberculosis Records Nurse—Arlene Ames
 Office Record Nurses—Florence Dailey, Estelle Furstoss

City Physicians—Edgar B Cook, Edw B Nugent, Grace A B Carter, Homer W Smith, L L Burger, H L StJohn, Geo Vetter, J Eug Kraft, Mary C Saxe, Harold S Dorrance, Charles Kaufman, Roland Goldstein, Jesse E Guildin, Andrew W Guthell, John Schreiber, Lucy Baker

Health Nurses—Supervising Nurse—Gertrude O'Hern. Health Nurses, Mrs Florence Quinn, Lulu E Burt, Rose A Weber, Irene Bishop, Cecelia A Shaw, Mrs Hilda T Fisher, Susan Cummings, Barbara Walters, Grace Dowdle, Margt Kannan, Helen Raush, Ella Whitmer, Ethel Miller, Virginia Almarode, Clyde Irwin, Irene Bowes, Mabel Earl, Emma Frey, G M Vickers, Mrs Anna Resch, Mary O'Neill, Margt Ryan, M U Hector, L Statt, M E Torrey, C Barnett, B Schur, Florence N Trentman, Emma Kehrig, Mary T Walsh, E Mae Clayman, Margt Barber, Madeline Affleck, Sadie Riebe, Frances Dolan, A Ruth Murphy, Mrs Ione Larkin, Marlon M Costello, Rose M Fritz, Helen Egan, Dorothy Nelson, Arlene Ames, C Margaret Collyer, Gertrude McDonald, Helen E Velts, Mrs Elva W Balling, Anna L Powers, Olive Young, Mrs Bernadine Kelley, Ruby M Trotske, Loretta Dean, Lillian Franks, Grace MacFarland, Wanda Pestke, Mrs Frances Cooley, Iola A Petz, Frances Heaney, Suzanne Sessler, Florence E Naylon, Mrs Mary K Clement, Bernadine Brady, Fay Ann Chazan

Temporary Attendants—Harry Whitley, Nathan Strom, Marie DePrez

Bureau of Parks
34 Court, 8d ft

Director—Patk J. Slavin. Deputy Director—Gertrude M Hartnett. Superintendent—City Forester—Malcolm Milne.

Division of Playgrounds and Recreation
34 Court, 8d ft

Superintendent—Chester B Leake. Asst Supt, Raymond G Slattery

Board of Examiners of Midwifery

Examiners—Dr James K Quigley, Dr David B Jewett

Rochester War Council
50 Main W

Chairman—Mayor Saml B Dicker
Coordinator, Robt H Link; Raymond N Ball, David B Brady, Theo C Briggs, Loula F Cartwright, Craig P Cochrane, John P Cooper, Alex K Dean, Mark Ellingson, Emmett R Gaughn, Jas E Kittrell, Milton E Loomis, Harold S W MacFarlin, Russell C McCarthy, Wm H Roberts, Herman Russell, Mrs F Ritter Spangway, Mrs Jas Sproat, Albert F Sulzer, John F Uffert, Mrs Stafford L Warren, John F Walsh, Thos C Woods

Department of Public Welfare
Convention Hall Annex
251 Clinton av S

Commissioner—Emmett B Gauhn
Deputy Commissioner—J Grover Conley
General Case Supervisor—Mrs Catherine M Manning

BUREAU OF VETERAN RELIEF
34 Court, 3d ft

Administrator and Deputy Commissioner of Welfare—Edwin I Cooper. Assistant Director, Graham H Scott. Case Supervisor—Catherine L Fontana

Board of Examiners of Plumbers
28 Spring

Examiners—George Pappert, term expires Dec 31, 1943; Herman Weidell, term expires Dec 31, 1944; Edward M Scott, term expires Dec 31, 1945
City Engineer—Henry L Howe
Chief Plumbing Inspector—Harold B Driscoll
Clerk—John A Koehler Jr

PLANNING BOARD
54 Court

Citizen Members, Wm G Kaelber, Chairman, J Howard Cather, Geo H Hawks; Ex-officio Members, Harold S W MacFarlin, Henry L Howe; Secretary—August H Wagener, 54 Court. Meets on call of secretary in Department of Commerce office.

ZONING BOARD OF APPEALS

C A Livingston, Geo Dietrich, Harry Boreham Jr, Richd Baybutt, Henry B Hanley, Harry B Crowley. Supervisor and Secretary—Meets every other Thursday of each month at 10 AM at 60 S Fitzhugh

MUNICIPAL MUSEUM COMMISSION
ROCHESTER MUSEUM OF ARTS AND SCIENCES
881 East av

Director—Arthur C Parker. John E Williams, MD, chairman. Commissioners—Mrs Stafford Warren, Carl S Hallauer, Jas P B Duffy, Edwin A Stebbins, Mayor and Supt of Schools

CITY HISTORIAN

Rundel Memorial Bldg 115 South av
Historian—Dr Dexter Perkins. Asst Historian, Dr Blake F McKeivay.

PRINTING AND ADVERTISING

City Printers—Democrat and Chronicle—for proceedings, resolutions, ordinances and notices.

CONSTABLES

Electd by the People

Ward 1—Edw J Conley. Ward 2—Louis Alletto. Ward 3—John P Condon. Ward 4—Leo Finegan. Ward 5—Richd W Nersinger. Ward 6—Wm Kelly. Ward 7—Manuel Palermo. Ward 8—Manuel Palermo. Ward 9—Michl J DeMarco. Ward 10—Paul M Caprio. Ward 11—Jos DeRose. Ward 12—Willfred L LaCour. Ward 13—Chas Scherza Jr. Ward 14—Eug Sullivan. Ward 15—Sam Piazera. Ward 16—Leslie Parker. Ward 17—Frank Schreiber. Ward 18—John J. Ward 19—Frank Schreiber. Ward 20—Carl Steimes. Ward 21—John Nobus. Ward 22—Saml Bordinia. Ward 23—Jas A Jepson. Ward 24—Emll Preis

BOARD OF EDUCATION

Office, Education Bldg, 13 S Fitzhugh. Hours, 8:45 AM to 4:45 PM, Saturdays, 8:45 AM to 12:15 PM

Commissioners

Salaries \$1,200 per year. Electd by the people for a term of four years. Term expires Dec 31 of year following name
Phillip C Wolz (pres) 1947; Mrs Wm B Lee, 1945; John E Keenan, 1945; Newton B Castle, 1945; Charles F Wray, 1947

Superintendent—James M Spinning. Asst Superintendents—David W Densmore, Harold E Akerly, Verne A Bird. Purchasing Agent—Jos L Ernst (on leave). Acting Purchasing Agent—Robt B Jeffers.
Superintendent of School Buildings—Francis R Scherer (on leave). Acting Supt of School Buildings—Walter M Nugent. Asst Supt of School Buildings—Brainard M Wilson.

Terms and Holidays

The school year is divided into two semesters. The first begins Tuesday, Sept 7th, and continues until Friday, Jan 21st. The second begins on Monday, Jan 24th, and continues until Friday, June 23d.

Holidays—All National and State Thanksgiving Days; Columbus Day (Oct 12th); Armistice Day (Nov 11th); Memorial Day (May 30th); Washington's Birthday (Feb 22d); Christmas, New Year's and intervening days, the day following Thanksgiving Day and Saturday

Number of Pupils and Teachers

Number of pupils registered in Public Schools (day and evenings), 52,715; Number of teachers, 1,557, not including evening school teachers or supply teachers

High Schools

Benjamin Franklin High School, 950 Norton cor. Hudson av.—Principal, Roy L Butterfield; V-prin, Willard A Sabin
Charlotte High School, 4115 Lake av.—Principal, Geo E Eddy; v-principal, Glenn M Denison
East High School, 410 Alexander near Main East.—Principal, Wm C Wolgast; V-principal, John L Merrill

East High School Annex, 200 University av cor Sco.—Principal, Arthur E Harris
Edison Technical & Industrial High School, 725 Clifford av.—Principal, Howard S Bennett; V-principal, Wm J Ackley

Jefferson High School, Edgerton park.—Principal, Arnold B Swift; Assoc-principal, Royal F Johnson; V-principal, Marguerite Shelnadina
John Marshall High School, 180 Ridgeway av cor Marigold.—Principal, Elmer W Snyder; V-principal, C Willard Burt

Madison High School, 101 Epworth at Wilson park.—Principal, Frank M Jenner; Vics-principal, Fredk A Newhall
Monroe High School, 164 Alexander cor Pearl.—Principal, Wm E Hawley; V-principal, Mary A Sheehan
West High School, 501 Genesee.—Principal, Chas H Holzwarth; v-principal, Melvin E Coon.

Grade Schools

Number One.—(Martin B Anderson School), 85 Hillside Av. Principal, Mrs Dorothea K Lortcher
Number Three.—(Nathaniel Rochester School) 59 Tremont near Plymouth Av. S. Principal, Fred B Parker

Number Four.—(George Mather Forbes School), 198 Bronson av. Principal, Mrs Edna S Jones
Number Five.—(John Williams School), 555 Plymouth Av. N. Principal, R Park Parkhill
Number Six.—(William Fitzhugh School), 15 Costar. Principal, Edith M Briggs

Number Seven.—(Lake View School), 219 Pisypont Principal, Mary K Toomey
Number Eight.—(Carthage School), 253 Conkey Av. Acting Principal, Mrs Julia B Evans.
Number Nine.—(Andrews School), 261 Joseph Av. cor Baden. Principal, Geo A McNeill

Number Eleven.—(Samuel A Lattimore School), 500 Webster Av. Principal, Milton E Friddis

Number Thirteen.—(Horace Mann School), 81 Hickory near South Av. Principal, Katherine B Powers
Number Fourteen.—(Greter Dewey School), 200 University Av. cor Solo. Principal, Arthur E Harris.
V-Prin, Irene M Murphy

Number Fifteen.—(Freeman Clarke School), 494 Averill Av. Principal, Mildred L Potter
Number Sixteen.—(John Walton Spencer School), 321 Post Av. Principal, Julia E Arnett

Number Seventeen.—(Whitney School), 259 Orange cor Saxton. Principal, Jackson Gallup
Number Eighteen.—(Concord School), 20 Draper cor North. Principal, Squire H Snell; v-prin, Anna M Vyverberg

Number Nineteen.—(Wm H Seward School), 465 Seward cor Magnolia. Principal, Howard H Lewis. Asst Prin, Blanche E Fullmer
Number Twenty.—(Henry Lomb School), 54 Oakman near Clinton Av. N. Principal, Mrs Gertrude F Brown

Number Twenty-One.—(Jonathan Child School), 399 Colvin near Jay. Principal, Amy K Mayle
Number Twenty-Two.—(Lincoln School), 27 Zimbrich near Joseph Av. Principal, Karl F Rex

Number Twenty-Three.—(Francis Parker School), 170 Barrington cor Millburn. Principal, L May Clark
Number Twenty-Four.—(Ellwanger & Barry School), 900 Meigs near Crawford. Principal, Marguerite D Hulbert

Number Twenty-Five.—(Nathaniel Hawthorne School) 965 North Goodman. Principal, Loretta deS Wilkison
Number Twenty-Six.—(Susan B. Anthony School) 127 First St. Principal, Fred M Pile
Number Twenty-Seven.—(Hendrik Hudson School), 450 Humboldt. Principal, Regina K Kennedy

Number Twenty-Eight.—(James Whitcomb Riley School), 46 Moran near Genesee. Principal, Edna M Hixson
Number Twenty-Nine.—(General Ewell S. Otis School), 36 Otis. Principal, Carl H Kumpf

Number Thirty.—(Hamilton School), 208 N Goodman. Principal, Mrs Mabel L Orr
Number Thirty-One.—(Aurubon School), 250 Grand Av. Principal, Mrs Caroline H Brown
Number Thirty-Two.—(Lexington School) 530 Lexington Av. Principal, Ralph N Cogswell

Number Thirty-Three.—(Pinnacle School), 156 Field Acting Principal, Ethel G Pease
Number Thirty-Four.—(Henry W. Longfellow School), 85 S Jacob St. Principal, Ivan K Potter
Number Thirty-Five.—(Lewis H Morgan School), 353 Congress av cor Post Av. Principal, Emma M O'Keefe

Number Thirty-Six.—(George Clinton Latta School), 270 Latta Rd. Principal, Geo W Cooper
Number Thirty-Seven.—(Andrew J. Townsend School), 145 Midland Av. Principal, Earle W Nash
Number Thirty-Eight.—(John Warrant Castleman School), 409 LaGrange Av. Principal, Ralph N Cogswell

Number Thirty-Nine.—(Kodak Park School), 279 Ridge rd. W. Principal, Alex R Roller
Number Forty.—(Abelard Reynolds School), 3330 Lake Av. opp. Stonewood Av. Principal, Geo W Cooper

Number Forty-One.—(Theodore Roosevelt School), 1305 Lyell av cor McRead Blvd. Principal, Olive A Paine
Number Forty-Two.—(Lincoln Park School), 820 Chill Av cor Stanton. Principal, Christine L Lats
Number Forty-Three.—(Chas. Carroll School), 250 Newcastle rd cor Dorchester Rd. Principal, Mrs Dorothea K Lortcher

Number Forty-Four.—(George H Thomas School), Lattimore Rd. and Norfolk St. Principal, Emma M O'Keefe
Number Forty-Five.—(Frank Fowler Dow School), 100 Farmington Rd. Principal, Claribel E Bruce

Number Forty-Six.—185 Bernard. Principal, Fredk O E Raab
School of Practical Nursing.—Edgerton Park. Nurse-Director, Isabel H Dill

Supervisory Staff
Director of Health Education.—Herman J Norton
Associate Director.—Elmer K Smith. Assistant Director.—Edith M Walker. Suprv.—Albert H Makin
Director of Attendance and Employment Certificating.—Raymond C Keopke

Director of Business Education.—Charles E Cook
Director of Art.—Marjorie A Lush. Supervisor of Art, Rose M Acker
Director of Home Economics.—Jessie W Tichall. Suprv.—Christine K Schamal

Director of Practical Arts—Edwin A Roberts
Director of Music—Alfred Spouse. Associate Director.—Sherman A Clute. Assistant Director.—Howard N Hinga. Supervisor.—Marlowe G Smith
Director of School Lunch Rooms.—Constance C Hart
Director of Visiting Teachers.—Helen E Weston
Elementary Education.—Helen Hadley, coordinator
Assoc Director.—Harriet Stillman. Supervisor, Hazel Prehm

Coordinator of Child Services and Director of Educational and Vocational Guidance.—Howard C Seymour
Director of Child Study and Special Education—A Lella Martin. Assistant Director of Special Education—Christine P Ingram. Supervisor Special Education, Mary T Walsh

Director of Teacher Employment and Certification.—Henry E Wendergem
Director of Visual and Radio Education—Paul E Smith, acting
Supervisor of Apprentice Training—Fletcher H Miller

On August 1st an additional fee of \$1.50
 On the 15th day of August a list of all unpaid taxes will be published
 on the 20th day of August all unpaid taxes will be sold, and can be redeemed only by paying advertising and sales charges with interest
 Checks payable to Director of Finance, and mailed, will be accepted
 Office hours 9 AM to 5 PM. Saturdays 9 AM to 12 M

LAW DEPARTMENT

Office, Court House

District Attorney—Danl J O'Mara of Rochester, salary, \$9,000, fixed by Supervisors; elected by the people; term three years; expires December 31, 1943
 Asst District Attorneys—Anthony Miceli, Clarence J Henry, Stephen K Pollard, Harry L Rosenthal, John C Little Jr, Alan M Hill, appointed by District Attorney
 Grand Jury Stenographers—Edgar C Ostrander, Bert J Barton; appointed by District Attorney
 Stenographer—Marion T Dingleline; appointed by District Attorney
 Managing Clerk—Frank B Schmidt, appointed by District Attorney
 Interpreters—Fulgencio E DelVaglio (Italian), Walter A Stanley (Polish) appointed by District Attorney
 Telephone Operator—Anna M Happ

LEGAL DEPARTMENT

16 Main W rm 400

Legal Adviser—Harry Rosenberg, salary, \$6,500; appointed by Supervisors. Deputy Legal Adviser—Jos B Boyle
 Stenographers—Evelyn K Pierce, Mrs Lois Ford, Mae J Brady

COMMISSIONER OF JURORS

Commissioner of Jurors—Richard L Saunders; appointed by the resident Judges of the Supreme Court and Judges of Monroe County Court; term five years
 Assistant Examiner—Leonard A Christopher
 Clerk—Evelyn Cottrill
 All subordinates are appointed by the Commissioner of Jurors, and approved by the Justices of the Supreme Court and Judges of County Court

BOARD OF ELECTIONS

Office, Court House. Hours, 9 AM to 5 PM
 Commissioners of Elections—Robt W Smith, Patk A Grimes; terms expire Dec 31, 1944, salary \$4,000; appointed by Board of Supervisors
 Stenographer—Mrs Evelyn B Nichols

SHERIFF AND DEPUTIES

Office, Court House

Sheriff—Albert W Skinner, elected by the people; term three years; expires December 31, 1943, salary, \$7,500, fixed by statute
 Under Sheriff—Geo A Conway; appointed by the Sheriff
 Chief Deputy Sheriffs—Robt J Fagan, Roy O'Loughlin
 Attorney—Donald Harris

COURT OF APPEALS

Term of Office, fourteen years

Chief Judge—Irving Lehman of N Y city; salary, \$22,500; term expires December 31, 1946
 Associate Judges—Salary \$22,000 and \$3,000 in lieu of expenses
 Charles S Desmond of Buffalo; term expires Dec 31, 1954. Harlan W Rippey, of Rochester, term expires December 31, 1944, John T Loughran, Kingston, term expires Dec 31, 1948; Edmund H Lewis of Syracuse, term expires Dec 31, 1954; Thos D Thatcher of New York, term expires December 31, 1943; Albert Conway of Brooklyn, term expires Dec 31, 1954
 Clerk—John J Ludden

SUPREME COURT

Appellate Division (Fourth Department). Includes the Fifth, Seventh and Eighth Judicial Districts.
 Presiding Justice—Harley N Crosby, Falconer; term expires Dec 31, 1945; salary \$17,500
 Associate Justices—Wm F Dowling, Utica; term expires Dec 31, 1954. Saml J Harris, Buffalo, term expires Dec 31, 1947. Francis D McCurn, Syracuse; term expires Dec 31, 1952. Benl B Cunningham, Rochester; term expires Dec 31, 1944. Marsh N Taylor, Rochester; term expires Dec 31, 1955.
 Clerk—Herbert B Wait. Deputy Clerk—Floyd G Greene
 Consultation Clerk—Olga G Johnson.
 Seventh Judicial District of New York. Includes the Counties of Cayuga, Livingston, Monroe, Ontario, Seneca, Stauben, Wayne, Yates
 Justices—Salaries, \$15,000; when assigned to Appellate Division, \$17,000. (Term of Office, fourteen years)
 Benn Kenyon, Auburn; term expires Dec 31, 1944
 Lewis A Gilbert, Newark; term expires Dec 31, 1954

Cashier—Evelyn H Bohm Kittlinger
 Deputy Sheriffs—Hiram C Johnson, Edwd G Rice, Chas C Schey, Chas Kase, Erwin L Sullivan, Gordon B Spears, Patsy J Rancone, Raymond F Flynn, Frank Palumbo, Harold J Vickery, Chas H McAllister, Chas A Miller, Walter Wilcox, Fenton J Coakly, Leon R Mosher, Frank J Cook, Chas M Harris, Merton J Drum, Jas J McManus, Carl W Peterson, Francis H Broomfield, Albert H Haight, Elmer Wood, Theo W Klee, Walter E Schuchart, Irvin T Hobby, Julius A Burkhardt Jr, Joseph Diamond, Saml J Raab, James I Conheady, Harold Gaffney, Louis Joy, Joseph P Kennedy, Arthur J Kay, Wm F Linney, Wm Marshall, Louis W Marks, Harry W McFarland, Robt T O'Brien, Richd F Spurr, Emmett W Skivington, Raymond B Sanford, Stephen Zicari, Albert Lavine, Wm Pfarrer, Wm H Stell, Harry Orenburg, John G Miller, Arthur H Clark, Michl J Mauro
 Secretary to Sheriff—Irene Riess

Jail

Jailors—Geo F Bastian, Don Mitchell, Douglas E Todd, Women Jailors, Agnes Daffner, Celia M Donovan, F Lillian Richards; appointed by the Sheriff
 Physician—James Davis; appointed by the Supervisors

Chaplains—Protestant, Dominic Porfario; Catholic, Lawrence Casey; Jewish, Solomon Sadowsky; appointed by the Supervisors

Deputy Sheriffs—Clarence Bates, Ernest F Dell, Walter Malcolm, Fred W Cabc, Frank C Smith, Geo W Moore, Wesley Trousdale; appointed by the Sheriff
 Engineers—Alex Milne, Patrick J Kane, Arthur Smith

CORONERS

Office, Public Morgue, 70 Clarissa

Richard A Leonardo, David H Atwater, elected by the people for a term of three years. Attendants—Geo M Glasser, Chas J Welch, Raymond Fredrick
 Chauffeurs—Wm Brodle, Lorin T Hinton, John C Imo
 Laborers—Phillip Eisenbauer, Martin Sullivan, Alfredo Maurizio
 Coroners' Physicians
 City—Walter J Riley, for East Side; Floyd Winslow, for West side, Rochester

BOARD OF CHILD WELFARE

Office, 1460 South av

Members of the Board—Harry B Crowley, chairman. Mrs Louls A Langle, Corresponding Secretary. Charles W Marcus v-chairman, Mrs John L Hazen, Mrs Clara K Foley, John J Reilly, Jesse B Hannan, Eva H Shepard, executive secretary. Assistant Secretary—M Vera Wilbur.

DEPARTMENT OF PUBLIC WELFARE

1460 South Av

Director of Public Welfare—Jesse B Hannan; appointed by County Manager. Confidential Secretary—Dana M Porter. Deputy Director—Agnes T George. Chief Case Supervisor—Katharine D Van DeCarr. Accounting Division—Wendell F Pierce
 Resource Division—Supervisor of Resource, Clinton O Ballou
 Division of Child Placing—Case Supervisor—Adelalde Kalsner. Accounting Division—Matilde A Lucia

COURTS

John VanVoorhis, Rochester; term expires Dec 31, 1950
 John C Wheeler, Corning; term expires Dec 31, 1949
 Fred D Cribb, Canandaigua; term expires Dec 31, 1951
 Wm F Love, Rochester; term expires Dec 31, 1945
 Official Referees—Arthur E Sutherland, Willis K Gillette, Nathan D Lapham
 Clerk—John C Hebe. Asst Clerks—Martin J Rowan, Edwd A Brown. Assignment Clerk—Willis C Gillette
 Asst Court Clerk and Naturalization Clerk—Howard G Cooper. Appointments by County Clerk. Stenographers—William E Cherry, Harold W Soale, Fred S Reed, Louis B Freer, Albert E Lazarus, Rupert O Burrows, Lealle H Wayman; appointed by Judges of Districts in session

COURT OF CLAIMS

Court regularly composed of five judges, appointed by Governor. Term nine years.
 Judges—Jas J Barrett, Syracuse, presiding; Bernard Ryan, Albion; Wm E Fitzsimmons, Albany; Emanuel Greenberg, Brooklyn; Marvin R Dye, Rochester; salaries \$10,000
 Clerk—Catherine J Crowe, Acting

COUNTY COURT

Court House

County Judges—William C Kohlmetz, of Rochester, salary, \$14,000; fixed by statute; term expires Dec 31, 1943, H Douglass VanDuser, of Brighton; salary \$14,000, term expires December 31, 1944.
 Confidential Clerk to Judge Kohlmetz—Martha M Miller
 Confidential Clerk to Judge VanDuser—Mrs Lucille C Lyden

Division of Old Age Assistance—Supervisor—Wm J Powers. Accounting Division—Wilbert C Snider
 County Home, 435 E Henrietta rd. Warden—George H Maitland. Matron—Lucille P Hauman. Chief Clerk—Verne F Clickner
 County Infirmary, 435 E Henrietta rd. Medical Supervisor—Eric S Green. Chief Resident Physician—James D Hague. Chief Clerk—Mildred B Schreiner. Superintendent of Nurses—Goldie M Holtz

IOLA MONROE COUNTY TUBERCULOSIS SANATORIUM

E Henrietta and Westfall rds, Rochester
 Superintendent—Ezra Bridge, MD
 Business Officer—Wallace H Bush
 Resident Physicians—John M MacMillan, Perry A Bly
 Board of Managers—Dr Floyd S Winslow, pres; Elbert W Brigham, vice pres; Dr Harvey J Vary, Tobias Roth, Elmer A Baithel
 Established by the County of Monroe, October 1, 1910, for the care and treatment of tuberculosis

ROCHESTER STATE HOSPITAL

Incorporated 1891, 1600 South Av
 Medical Superintendent, John L VanDeMark; First Asst Physician. Willard H Veeder, Kenneth K Slaght; Director of Clinical Psychiatry, Beni Pollock; Pathologist, Wm H English; Senior Asst Physicians, Malwina T Lemmie, Harold Feldman, Wm Liberton; Asst Physicians, Martin A Sander; Medical Internes, Wellington W Reynolds, Jos E Allen, Henry Freund; Pharmacist, Ralph W Engelhardt; Steward, Karl E Alderman. Principal School of Nursing, Christine S Kittredge, R.N. Asst Principal School of Nursing, Nellie M Zukattis; Chief Occupational Therapist, Jessie W Tozier. Social Workers, Jean H Orenburg; Asst Social Worker, Margt G Guffin. Chief Engineer, Stephen H Veile. Master Mechanic, Ralph E Piper. There are approximately 553 employees in the hospital

DEPARTMENT OF SANITATION

E. Henrietta Rd. at Westfall Rd.

Chief—; appointed annually by Supervisors
 Stenographers—Christine E Schwartz, Marjorie C Grundke, Shirley R Leve
 Inspectors—Charles L Binder and Lyle E Wells
 Asst Inspectors—Jas F Nast, Robt L Bradstreet, E Landis True

COMMISSIONERS FOR BURIAL OF DECEASED SOLDIERS

At Large—Chas H Reilinger, 34 Court rm 319.

NEW YORK STATE RELIEF BUREAU COMMISSIONERS

Monroe County—Dist 1, Charles W Felst; Dist 2, Vincent T Izzo; Dist 3, Leighton Gridley; Dist 4, Edwin I Cooper; Dist 5, Howard E Engel

County Court Clerks—John B Reardon, Wm J Ware
 Stenographers—Howard G Nobles; Herbert J Erb; appointed by County Judge
 Children's Court Judge—Henry D Shedd, salary, \$10,000, fixed by statute; term expires Dec 31, 1947.
 Confidential Clerk to Children's Court Judge—Helen O Vogler
 Special Clerk, Children's Court—Victor E Brown
 Clerk, Children's Court—Lou Magrain
 Chief Probation Officer for Children—Harry O Argeno; appointed by County Judge
 Asst Chief Probation Officer—Mrs Jeanne E Jacques
 Probation Officers—Leon C Whitlock, Mrs Dorothy L Christman, Harold D Bryant and Edward F Geen
 Clerk and Stenographer, Children's Court—Margaret Wilder
 Stenographer and Record Clerk—Regina M Powers
 County Probation Office—Adult Division
 Chief Probation Officer—Elmer T Lindquist
 Asst Chief Probation Officer—Joseph H McMahon
 Probation Officers—George J Gray, Charles B Tutty Jr, Willard M Green, Kyle E Daniels, B Lacey Conroy
 Clerk—Emilie A LePine; appointed by County Judge
 Stenographers—Esther S Whall, Ann Cagnasso

Terms of Court

Third Monday of January; third Monday of March; third Monday of May; third Monday of September; third Monday of November; each with a trial day; every Monday, except when Monday falls on a holiday, for contested motions and Ex-parte applications.

SURROGATE'S COURT

Court House

Surrogate—Joseph M Fealy, salary, \$14,000; fixed by statute; term six years; expires December 31, 1943
 Clerk of Court—Frank R O'Brien; appointed by the Surrogate

Deputy Clerk—Ray C Schaefer; appointed by the Surrogate

Clerks—Indexer, Mrs Ada Pettis, Clara M Seiner, Mrs Mabel W Grey, Mrs Helen E Schroedl, Ruth A Holden, Maude A DeWitt, Mrs Mary M Bleck, Anne P K Susko

Transfer Tax Clerk—Mrs Laura B Reed
Custodian of Records—Walter F Gunther
Stenographer—George A Cruttenden, appointed by the Surrogate

Sessions daily at 10 A.M. (except Wednesdays and Saturdays; and the month of August)

CITY COURT OF ROCHESTER
(See General Index)

UNITED STATES COURTS
Federal Building, North Fitzhugh Street

District Court

(Western District of New York)

District Judges—John Knight of Buffalo, Harold P Burke, Rochester; appointed, salaries \$10,000

Clerk—May C Sickmon, of Buffalo, salary, \$5,400

Chief Deputy Clerk—Alice J Rieker of Buffalo

U. S. Marshal—Frank C Blackford of Spencerport, salary, \$5,800

Deputy Marshals—Richard T Carey, Dominic Della-Ventura, Martin J Herbst, Nelson Boehler, Helen E Griffin, John S Zimmer

U. S. Attorney—Geo L Grobe of Buffalo, salary, \$7,000. Asst U. S. Attorney—Goodman A Sarachan of Rochester, Austin J Donovan, of Rochester

U. S. Commissioners—Robt Miller, Walter A Swan, of Rochester

U. S. Referee in Bankruptcy—Nelson P Sanford
Clerk—Alice King

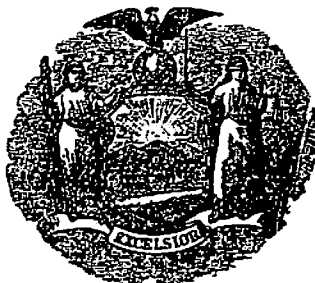
Terms of District Court

Second Tuesday of January, at Elmira; second Tuesday of March, at Buffalo; second Tuesday of May, at Rochester; second Tuesday of July, at Jamestown; second Tuesday of September, at Canandaigua; second Tuesday of October at Lockport; second Tuesday of November, at Buffalo

RAILROAD STATIONS

(See Classified Business Directory)

NEW YORK STATE GOVERNMENT 1943



ELECTION QUADRENNIALLY
FIRST TUESDAY AFTER
THE FIRST MONDAY
IN NOVEMBER

LEGISLATURE MEETS ON
THE FIRST WEDNESDAY
IN JANUARY

ELECTIVE OFFICERS

Governor—Thomas E Dewey of Pawling, salary \$25,000. Term expires Dec 31, 1948. Paul E Lockwood, Sec to the Governor, Office, rm 203, Capitol bldg, Albany

Lieutenant Governor—Joe E Hanley, of Perry. Office third floor, Capitol bldg, Albany

Comptroller—Frank C Moore, of Kenmore. Salary \$12,000. Term expires Dec 31, 1948. State Office bldg, Albany

Attorney General—Nathaniel L Goldstein, of Albany, salary \$12,000. Term expires Dec 31, 1948. Office 216 The Capitol, Albany

DEPARTMENT OF TAXATION AND FINANCE

Commissioner—Rollin Browne, of New York, term expires Dec 31, 1948, salary \$12,000. 5th Floor, State Office bldg, Albany

DEPARTMENT OF STATE

Secretary of State—Thomas J Curran, of New York, salary \$12,000; term expires Dec 31, 1948. Appointed by the Governor. Office, 280 The Capitol, Albany

DEPARTMENT OF PUBLIC WORKS

Superintendent—Charles H Seils, of Pleasantville, salary \$12,000, appointed by the Governor. 18th floor State Office bldg, Albany

CONSERVATION DEPARTMENT

Commissioner — John A White, of Bath, salary \$12,000. 488 Bway, Albany

DEPARTMENT OF AGRICULTURE AND MARKETS

Commissioner—C Chester DuMont, of Ulster Park, salary \$12,000. 20th floor State Office bldg, Albany
New York State Fair—Bligh Dodds, Director

DEPARTMENT OF LABOR

Industrial Commissioner—Glenys M. Gifford, of New York, Acting. 9th floor State Office building, Albany, and State Office bldg, N Y

EDUCATION DEPARTMENT

Commissioner—George D Stoddard, of Albany, salary \$15,000. Education Building, Albany

DEPARTMENT OF HEALTH

Commissioner—Edwd S Godfrey Jr, M D, of Albany, salary \$12,000. 15th floor State Office building, Albany

DEPARTMENT OF MENTAL HYGIENE

Commissioner—Fredk MacCurdy, MD, of New York, salary \$12,000. 18th floor, State Office bldg, Albany

DEPARTMENT OF SOCIAL WELFARE

Commissioner—Robt T Lansdale, of New York, salary \$12,000, 9th floor, 112 State Albany

DEPARTMENT OF CORRECTION

Commissioner—John A Lyons, salary \$12,000. 17th floor State Office bldg, Albany

PUBLIC SERVICE COMMISSION

Commissioner—Millo R Maltbie, of N Y city, chairman. 10th floor State Office bldg, Albany

BANKING DEPARTMENT

Superintendent—Elliott V Bell, of N Y city, salary \$12,000. 27th floor State Office building, Albany

INSURANCE DEPARTMENT

Superintendent—Robt E Dineen, of Syracuse, salary \$12,000. 8th floor State Office bldg, Albany

DEPARTMENT OF CIVIL SERVICE

Commissioner—J Edw Conway, of Kingston, President, salary \$9,000. 24th floor State Office building, Albany

NEW YORK REPRESENTATIVES IN CONGRESS

MEMBERS OF THE SEVENTY-EIGHTH CONGRESS

- At large—Matthew J Merritt (D), Malba, L I
- At large—Winifred C Stanley (R), Buffalo
- 1 Leonard W Hall (R), Oyster Bay
- 2 Wm B Barry (D), St Albans, LI
- 3 Joseph L Pfeiffer (D), Brooklyn
- 4 Theo H Cullen (D), Brooklyn
- 5 James J Heffernan (D), Brooklyn
- 6 Andrew L Sainers (D), Brooklyn
- 7 John J Delaney (D), Brooklyn
- 8 Donald L O'Toole (D), Brooklyn
- 9 Eugene J Keogh (D), Brooklyn
- 10 Emanuel Celler (D), W New Brighton
- 11 James A O'Leary (D), N Y city
- 12 Saml Dickstein (D), N Y city
- 13 Louis J Capozzoli (D), N Y city
- 14 Arthur G Klein (D), N Y city

- 15 Thos F Burchill (D), N Y city
- 16 James H Fay (D), N Y city
- 17 Joseph C Baldwin (R), New York
- 18 Martin J Kennedy (D), N Y city
- 19 Sol Bloom (D), N Y city
- 20 Vito Marcantonio (American Labor), N Y city
- 21 Jos A Gavagan (D), N Y city
- 22 Walter A Lynch (D), Bronx
- 23 Charles A Buckley (D), Bronx
- 24 Jas M Fitzpatrick (D), Bronx
- 25 Ralph A Gamble (R), Larchmont
- 26 Hamilton Fish (R), Garrison
- 27 Jay LeFevre (R), New Palts
- 28 Wm T Byrne (D), Loudonville
- 29 Dean P Taylor (R), Troy
- 30 Bernard W Kearney (R), Gloversville

- 31 Clarence E Kilburn (R), Malone
- 32 Francis D Calkin (R), Oswego
- 33 Fred J Douglas (R), Utica
- 34 Edwin A Hall (R), Binghamton
- 35 Clarence B Hancock (R), Syracuse
- 36 John Tubor (R), Auburn
- 37 W Sterling Cole (R), Bath
- 38 Joseph J O'Brien (R), East Rochester
- 39 James W Wadsworth (R), Genesee
- 40 Walter G Andrews (R), Buffalo
- 41 Joseph Miruk (R), Buffalo
- 42 John C Butler (R), Buffalo
- 43 Danl A Reed (R), Dunkirk

LEGISLATIVE DEPARTMENT

Legislature meets on the first Wednesday in January.

Assembly

Monroe County is divided into Five Assembly Districts.

District 1—Towns of Brighton, Henrietta, Irondequoit, Mendon, Penfield, Perinton, Pittsford, Rush and Webster; together with the following city wards: fourteenth (14th and 15th election districts), seventeenth (1, 2, 3, 4, 5, 6, 7, 8, 9, 10, 16, 17, 18, 19 and 20th election districts), eighteenth (12, 21, 22, 26, 27 and 28th election districts), twenty-first (12th election district), twenty-second (1, 2, 3, 10 and 11th election districts), 59 districts in towns, 29 in city, Assemblyman, Frank J Sellmayer Jr.

District 2—Sixth ward (6, 7 and 8th election districts), eighth (6, 7, 8 and 9th election districts), twelfth (10, 11, 12, 13, 16 and 17th election districts), sixteenth (5th and 9th election districts), eighteenth (1, 2, 3, 4, 5, 6, 7, 8, 9, 10, 11, 13, 14, 15, 16, 17, 18, 19, 20, 23, 24, 25, 26, 29 and 30th election districts), twenty-first (1, 2, 3, 4, 5, 6, 7, 8, 9, 10 and 11th election districts), twenty-second (4, 5, 6, 7, 8, 9, 12, 13, 14, 15, 16 and 17th election districts), 62 districts. Assemblyman, Abr Schulman

District 3—Fourth ward, sixth (1, 2, 3, 4 and 5th election districts), seventh, eighth (1, 2, 3, 4 and 5th election districts), twelfth (1, 2, 3, 4, 5, 6, 7, 8, 9, 14 and 15th election districts), thirteenth (3, 4, 5 and 6th election districts), sixteenth (1, 2, 3, 4, 6, 7 and 8th election districts), seventeenth (11, 12, 13, 14 and 15th election districts), 47 districts. Assemblyman, George T Manning

District 4—The town of Greece; together with the following city wards: first, second, third, fifth, ninth, tenth (1, 2, 3, 4, 5, 6, 7, 8, 9, 10, 11, 12, 13, 14, 15, 16, 17, 20, 21, 22, 23, 24, 25, 26 and 27th election districts), eleventh (1, 2, 3 and 4th election districts), thirteenth (1st and 2d election districts), fourteenth (1, 2, 3, 4, 5, 6, 7, 8, 9, 10, 11, 12, 13, 16, 17 and 18th election districts), fifteenth (1st and 2d election districts), twenty-third. 10 districts in towns, 79 in city. Assemblyman, Thos F Riley

District 5—The towns of Chili, Clarkson, Gates, Hamlin, Ogden, Parma, Riga, Sweden and Wheatland, together with the following city wards: tenth (18, 19 and 28th election districts), eleventh (5, 6, 7, 8 and 9th election districts), fifteenth (3, 4, 5, 6, 7 and 8th election districts), nineteenth, twentieth and twenty-fourth. 27 districts in towns, 65 in city. Assemblyman, Wm B Mann

Senate

Monroe County constitutes the Forty-fifth and Forty-sixth Districts.

District 45—The forty-fifth senate district shall consist of that part of the county of Monroe comprising the towns of Brighton, Henrietta, Irondequoit, Mendon, Penfield, Perinton, Pittsford, Rush and Webster; together with the following city wards: fourth, sixth, seventh, eighth, twelfth, thirteenth (3, 4, 5 and 6th election districts), fourteenth (14th and 15th election districts), sixteenth, seventeenth, eighteenth, twenty-first and twenty-second. 69 districts in towns, 138 in city. Senator, Rodney B James

District 46—The forty-sixth senate district shall consist of that part of the county of Monroe comprising the towns of Chili, Clarkson, Gates, Greece, Hamlin, Ogden, Parma, Riga, Sweden and Wheatland; together with the first, second, third, fifth, ninth, tenth, eleventh, thirteenth (1st and 2d election districts), fourteenth (1, 2, 3, 4, 5, 6, 7, 8, 9, 10, 11, 12, 13, 16, 17 and 18th election districts), fifteenth, nineteenth, twentieth, twenty-third and twenty-fourth wards. 37 districts in towns, 144 in city. Senator, Allan J Oliver

Thirty-Eighth Congressional District

First Ward, second, third, fourth, fifth, sixth, seventh, eighth, ninth, tenth, twelfth, thirteenth, fourteenth, fifteenth (1, 2, 6, 7 and 8th election districts), sixteenth, seventeenth, eighteenth, twentieth (1st and 2d election districts), twenty-first, twenty-second, twenty-third; together with the following towns, in Monroe County: Brighton, Greece, Henrietta, Irondequoit, Mendon, Penfield, Perinton, Pittsford, Rush, Webster. 69 districts in towns, 221 districts in cities. Congressman, Joseph J O'Brien

Thirty-Ninth Congressional District

Consists of the following towns, in Monroe County: Chili, Clarkson, Gates, Hamlin, Ogden, Parma, Riga, Sweden, Wheatland; together with the following city wards: eleventh fifteenth (3, 4 and 5th election districts), nineteenth, twentieth (3, 4, 5, 6, 7, 8, 9, and 10th election districts), twenty-fourth. 27 districts in towns, 61 districts in city. Congressman, James W Wadsworth
Total—96 districts in towns. 282 districts in city. 378 districts in county.

MILITARY

GENERAL HEADQUARTERS
OF THE STATE OF NEW YORK

Commander-in-Chief—Thomas E Dewey
Brig Gen Ames T Brown. The Adjutant General of the State, Chief of Staff
Office of the Adjutant General of the State, 600 The Capitol, Albany
Brig Gen Ames T Brown, Adjt General.

21st REGIMENT, NEW YORK GUARD

New York State Armory, Rochester, N Y
Colonel—Fred E Wegner
Lieut Col—John Meston
Adjutant—Capt Edw C Junker
Plans and Training Officer—Capt Chas A Palmer
Supply Officer—Capt H Earl Newman
Personnel Officer—Capt C Elmer Forscher
Intelligence Officer—Capt Newton E Carter
Medical Officers—Major Cornelius P Dancy, MD; Capt Jas W Welch, MD; Capt Nathan Francis, MD
Chaplain—Rev Chas J Bruton
Engineer Officer—Capt Hiram E Bryan
First Battalion—Major Thos J Griffin
Company A—Capt Alexander Gray
Company B—Capt Andrew L Smith
Second Battalion—Major Ray F Fowler
Company E—Capt Harry L Boorman
Company G—Capt Vincent A Palmer
Third Battalion—Culver rd Armory—Major Dallas C Newton
Company K—Capt Chas H Wadhams
Company L—Capt Wm L Weaver

UNITED STATES GOVERNMENT

THE EXECUTIVE

President—Franklin D Roosevelt of New York; salary \$75,000; term expires Jan 20, 1933
Vice President—Henry A Wallace of Iowa; salary \$15,000; term expires Jan 20, 1945

THE CABINET

Arranged in the order of succession for the Presidency.
Secretary of State—Cordell Hull of Tennessee; salary \$15,000
Secretary of the Treasury—Henry Morgenthau Jr of New York; salary \$15,000
Secretary of War—Henry L Stimson of New York; salary \$15,000
Attorney-General—Francis Biddle of Pennsylvania; salary \$15,000
Postmaster General—Frank C Walker of New York; salary \$15,000
Secretary of the Navy—Frank Knox of Illinois; salary \$15,000
Secretary of the Interior—Harold L Ickes of Illinois; salary \$15,000
Secretary of Agriculture—Claude R Wickard of Indiana; salary \$15,000
Secretary of Commerce—Jesse H Jones of Texas; salary \$15,000
Secretary of Labor—Miss Frances Perkins of New York; salary \$15,000

DEPARTMENTAL EXECUTIVES

Comptroller General—Lindsay Warren
Comptroller of the Currency—Preston Delano
Treasurer of the United States—Wm A Julian
Director of the Budget—Harold D Smith
Director of the Mint—Mrs Nellie T Ross
United States Marshal—John B Coyne
United States Attorney—Edw M Curran
Director Bureau of Standards—Lyman J Briggs
Chief of Weather Bureau—Francis W Reichelderfer
Administrator of Veterans' Affairs—Brig Gen Frank T Hines
Commissioner of Education—John W Studebaker; salary \$9,000
Commissioner of Patents—Conway P Coe
Commissioner of Indian Affairs—John Collier; salary \$9,000
Director, Bureau of Engraving and Printing—Alvin W Hall; salary \$9,000
Civil Service Commissioners—Harry B Mitchell, pres; Mrs Lucille F McMillin, Arthur S Flemming, salaries \$8,500. L A Moyer, Executive Director and Chief Examiner, salary \$8,000
Interstate Commerce Commissioners—J Haden All-dredge, chairman; J Monroe Johnson, Wm E Lee, Chas D Mahaffie, Clyde B Atchison, Walter M W Splawn, Claude R Porter, Carroll Miller, John L Rogers, Wm J Patterson, Jos B Eastman

Commissioner of Internal Revenue—Guy T Helvering; salary \$10,000
Commissioner of Immigration and Naturalization—John G. Harbo; salary \$10,000
Commissioner of Labor Statistics—Isador Lubin; salary \$9,000
Director of Census—James C Capt
Librarian of Congress—Archibald MacLeish; salary \$10,000

THE SENATE

Seventy-eighth Congress; convened Jan 3, 1943
Salary of Senators and Representatives, \$10,000 and 20 cents mileage.

SENATORS

Alabama.—*John H Bankhead 2d, 1949; *Lister Hill, 1945
Arizona.—*Ernest W. McFarland, 1947; *Carl Hayden, 1945
Arkansas.—*Mrs Hattie W Caraway, 1945; *John J McClellan, 1949
California.—*Sheridan Downey, 1945; Hiram W. Johnson, 1947.
Colorado.—*Edwin C. Johnson, 1949; Eugene D Millikin, 1945.
Connecticut.—John A. Danaher, 1945; *Francis Maloney, 1947.
Delaware.—*James M. Tunnell, 1947; Clayton D. Buck, 1949
Florida.—*Claude Pepper, 1945; *Charles O. Andrews, 1947.
Georgia.—*Walter F. George, 1945; *Richard B. Russell Jr., 1949.
Idaho.—John Thomas, 1949; *D Worth Clark, 1945.
Illinois.—C. Wayland Brooks, 1949; *Scott W. Lucas, 1945
Indiana.—*Frederick VanNuys, 1945; Raymond E. Willis, 1947.
Iowa.—*Guy M. Gillette, 1945; Geo A. Wilson, 1949.
Kansas.—Arthur Capper, 1949; Clyde M. Reed, 1945.
Kentucky.—*Alben W. Barkley, 1945; *Albert B. Chandler, 1949.
Louisiana.—*John H. Overton, 1945; *Allen J. Ellender, 1949.
Maine.—Ralph O. Brewster, 1947; Wallace H. White, Jr., 1949.
Maryland.—*Millard E. Tydings, 1945; *Geo. L. Radcliffe, 1947.
Massachusetts.—*David I. Walsh, 1947; Henry Cabot Lodge Jr., 1949.
Michigan.—Arthur H. Vandenberg, 1947; Homer Ferguson, 1949.
Minnesota.—Henrik Shipstead, 1947; Joseph E. Ball, 1949.

Mississippi.—*James O Eastland, 1949; *Theodore G. Bilbo, 1947.
Missouri.—*Bennett C. Clark, 1945; *Harry S. Truman, 1947.
Montana.—*Burton K. Wheeler, 1947; *James E. Murray, 1949.
Nebraska.—*Kenneth S Wherry, 1949; Hugh A Butler, 1947
Nevada.—*Patrick A. McCarran, 1945; *James G. Scrugham, 1947.
New Hampshire.—Charles W Tobey, 1945; Styles Bridges, 1949.
New Jersey.—Albert W Hawkes, 1949; W. Warren Barbour, 1947.
New Mexico.—*Carl A. Hatch, 1949; *Dennis Chavez, 1947.
New York.—*James M. Mead, 1947; *Robert F. Wagner, 1945.
North Carolina.—*Robert R. Reynolds, 1945; *Joseph W. Bailey, 1949.
North Dakota.—Gerald P. Nye, 1945; Wm Langeft, 1947.
Ohio.—Robert A. Taft, 1945; Harold H. Burton, 1947.
Oklahoma.—*Elmer Thomas, 1945; Edward H. Moore, 1949.
Oregon.—*Charles L. McNary, 1949; Rufus C. Holman, 1945.
Pennsylvania.—James J. Davis, 1945; *Joseph P. Guffey, 1947.
Rhode Island.—*Theodore F. Green, 1949; *Peter G. Gerry, 1947.
South Carolina.—*Ellison D. Smith, 1945; *Barnet R. Maybank, 1949.
South Dakota.—Chan Gurney, 1945; Harlan J. Bushfield, 1949.
Tennessee.—*Kenneth McKellar, 1947; *Tom R Stewart, 1949.
Texas.—*W. Lee O'Daniel, 1949; *Tom Connally, 1947.
Utah.—*Elbert D. Thomas, 1945; *Abe Murdock, 1947.
Vermont.—Geo D. Aiken, 1945; Warren B. Austin, 1947.
Virginia.—*Carter Glass, 1949; *Harry F. Byrd, 1947.
Washington.—*Homer T. Bone, 1945; *Mca C. Wallgren, 1947.
West Virginia.—*Harley M. Kilgore, 1947; Chapman Bevercomb, 1949.
Wisconsin.—(Progressive) Robert M. LaFollette, Jr., 1947; Alexander Wiley, 1945.
Wyoming.—Edw V. Robertson, 1949; *Joseph C. O'Mahoney, 1947.

*Indicates Democrats; its absence Republicans

CUSTOM HOUSE

Office, Federal Building, N Fitzhugh Street

By regulation of the Treasury Department, the Custom House opens at 9 AM and closes at 4:30 PM except Saturday, closes at 1:00 PM for the Transaction of business through the year

Collector—Austin J Mahoney
Assistant Collector—Frank Gallagher
Deputy Collectors at Rochester—Fred O Buchan, Daniel DeLelys

Inspectors at Rochester—John W Dunne, Carl A Forest, Frank D Rossney, Jos D Gleason

The District of Rochester includes all of the counties of Oswego, Oneida, Onondaga, Cayuga, Seneca, Wayne, Broome, Tompkins, Chenango, Madison, Cortland, Hamilton, Schuyler, Chemung, Herkimer, Monroe, Ontario, Livingston, Yates, Steuben, Orleans, Genesee, Wyoming, Alleghany and Tioga with District headquarters at Rochester. Rochester, Oswego, Utica, Syracuse and Solus Point are ports of entry.

Appraiser of Merchandise, Appraiser—Harold A King; Examiner—John J Deraney

INTERNAL REVENUE

Twenty-eighth Collection District of New York
Headquarters at Buffalo

Includes the Counties of Monroe, Orleans, Livingston, Ontario, Yates, Chemung, Steuben, Alleghany, Niagara, Erie, Genesee, Wyoming, Cattaraugus, Chautauqua

Deputy Collector's Office, Federal Building, N Fitzhugh Street: Office Hours, 8:30 AM to 5:00 PM. Saturday, 8:30 AM to 5:00 PM. Agents Office, 934 Granite bldg

Collector—Geo T McGowan
Division Chief—Francis A Dalton

Office Deputies at Rochester—Martha C Hill, Leo A Koch
Cashier—Leo A Koch
Zone Deputies at Rochester—Edward A Brown, Paul Brigandi, Jacob Horne, Edwin J Brown Jr, Elmer J Cappon, Harry Rosenberg, Chevalier D Williams, Richd Holtan, Nelson Zulauf, Irving H Kreckman, John E Collins, Bernard E Desiderio, Archie L Bubbier, John J Kaleta, Hugh J Neary, Richd D Tierney, Nicholas Ange, Ralph B Gaylord, Edwin G Dooley, Wm A Merce, John J Curran, Lester E Tuttle, Paul F Statt

U S WEATHER BUREAU

Office, Airport, Scottsville Rd

Office Hours, 24 Hours Daily

Meteorologist in Charge—Emil A P Raab, Observer—Willard A Brownlee. Asst Observer—Esther W Stewart. Junior Observers—Dorothy K Hibbard, Ruth L Sarach, Lois S Harp.

For Meteorological Record of Rochester, for year ending May 1943, see page 14

ROCHESTER POST OFFICE

Main P O, 216 Cumberland Street

Established in 1812

Postmaster—Donald A Dalley. Asst Postmaster John J Sullivan. Supt of Mails—John F McGuire. Asst Supts of Mails—Joseph A Renaud, Edw F Moran, Louis Gelsler, Leo M Brownyard, Jos A E Hart. Bookkeepers—George W Powers, Donald McCowan. Cashier Money Order Division—Geo J Sullivan. Foreman Registry Dept—John Amaler. Foremen—Timothy E Cullen, Harry T Doolin, Robert J Hall, Harry R Schroth, Wilbur H Edwards, Paul E Brien, L Cornelius Gibbs, Geo R Miller, Jas L McGee, Dennis V Cooney. Cashier—Edward L Frank. Assistant Cashiers—Carl J Amon, Rudolph E Vay. Field Foremen—

Patk H Gilgan, Carl A Schubmehl, Gerald M Grimes, John J Eckhardt. Retail Stamp Clerks—Victor E Monahan, Wm P J Furlong, Harold G Ensign, Wm Schneider. Wholesale Stamp Clerk—Wm Schenck
Station Examiners—John J Keegan, Donald Willey
Supt of Motor Vehicles—Andrew J Wittman
Local Secretary Board of U S Civil Service Examiners—Geo H Schneider

Railway Mail Service—Clerk in Charge—Harry Castle. Office at New York Central E R station
There are also 268 carriers, 285 clerks, 27 laborers, 1 janitor and 54 custodians

The General Delivery is open from 7 AM to 6 PM. Saturday, 7 AM to 6 PM for delivery of transient letters.

Money Order Department issued 8:30 AM to 5 PM paid 9:00 AM to 5 PM. War Savings Bonds and Stamps, 9 AM to 5 PM, Saturday 9 AM to 1 PM. Postal Savings Bank is open from 9 AM to 5 PM; Saturday 9 AM to 1 PM. Registry Departments from 8 AM to 8:30 PM, Saturday 8 AM to 6 PM. Parcel Post Department from 7 AM to 7:30 PM; Saturday 7 AM to 6 PM.

Gross receipts for the year ending June 30, 1942, \$3,190,701.63.

Post Office Stations—Open from 7.30 AM to 6.00 PM for registration of letters and parcels issuing and paying money orders, sale of stamps, &c.

Bull's Head—32 York. Matthew J Renner, supt
Beechwood Station—1099-1101 Main street East. Arthur Buckley, supt

Brighton Station—1765 East av. Matthew J Mof-fett, supt

Charlotte Station—4363 Lake av. Harold E Clecquennot, supt

Dewey Station—359 Driving Park av. Jos A Hart, supt

Federal Station—26 Church. Robt E Caul, supt

POST OFFICES IN MONROE COUNTY.

Post Office	Town	Post Office	Town
*Adams Basin	Ogden	*Industry	Rush
*Beechwood	Rochester	*Mendon	Mendon
*Brighton	Rochester	*Mumford	Wheatland
*Brookport	Sweden	*North Chili	Chili
*Bull's Head	Rochester	*North Greece	Greece
*Charlotte	Greece	*Penfield	Penfield
*Chili	Chili	*Pittsford	Pittsford
*Churchville	Riga	*Point Pleasant	Irondequoit
*Clarkson	Clarkson	*Rochester	Rochester
*Clifton	Chili	*Rochester Junction	Mendon
*Cold Water	Gates	*Rush	Rush
*Crittenden	Rochester	*Scottsville	Wheatland
*Dewey	Rochester	*Sea Breeze	Irondequoit
*East Rochester	Perinton	*Spencerport	Ogden
*Fairport	Perinton	*Union Hill	Webster
*Federal	Rochester	*Walker	Hamlin
*Garbutt	Wheatland	*Webster	Webster
*Hamlin	Hamlin	*West Henrietta	Henrietta
*Henrietta	Henrietta	*West Rush	Rush
*Hilton	Farmia	*West Webster	Webster
*Honeoye Falls	Mendon		

†Station of Rochester.
*Money Order Offices

RATES OF POSTAGE

DOMESTIC POSTAGE RATES

First Class

Letters, etc.: 3 cents for each ounce or fraction of an ounce. Letters addressed for local delivery 2 cents each ounce or fraction of an ounce.

Post Cards: 1 cent each, within prescribed sizes.

Business Reply Cards: Ordinary, 2 cents each; air mail, 6 cents per ounce.

Business Reply Envelopes: Ordinary 1 cent in addition to regular postage. Apply at P O for permit.

Second Class

Newspapers and Periodicals (Transient rate): 1 cent for each 2 ounces or fraction of 2 ounces or fourth-class rate whichever is lower.

Third Class

Printed Circulars: Books having less than 24 pages, catalogs, merchandise, miscellaneous printed matter, (except first and second class), weighing 8 ounces or less, 1 1/2 cents for each 2 ounces or fraction.

Books: Printed of 24 or more pages, seeds, bulbs, plants, cuttings, etc.: 1 cent for each 2 ounces or fraction.

*Book Rate: 3 cents a pound applies to certain types of books which are permanently bound by stitching or stapling, or by means of spiral or plastic binding, when covered with paper, cloth, leather or other substantial material, such as music books, a view book or atlas, bibles, etc. Books mailed under this rate must be indorsed by the mailers "Book" or "Books".

*Consult Post Office concerning books mailable under this rate.

The rates of postage on individually addressed catalogs and similar printed advertising matter in bound form, consisting of 24 or more pages and not exceeding 10 pounds in weight, shall be as follows:

ZONES

Rates	LOCAL	1ST	2D	3D	4TH	5TH	6TH	7TH	8TH
First Pound	4c	4c	4c	5c	6c	7c	8c	9c	10c
Each Additional Pound	3c	1c	1c	2c	3c	4c	5c	6c	7c

The rates do not apply to bulk parcels containing a number of pieces sent to one address. It will be permissible to include with catalogs and other printed advertising matter mailed at these new rates the usual loose inclosures, such as order forms, reply envelopes, loose circulars, etc., provided, such inclosures are incidental. Matter mailed under the provisions of the new regulation should be clearly endorsed in order to distinguish the same from other fourth-class mail and prevent rating such matters with deficient postage at the regular fourth-class rate. These rates do not apply to packages weighing 8 ounces or less, that is, third-class matter.

FOURTH CLASS—PARCEL POST

Fourth Class: Includes printed matter, merchandise and all other matter weighing in excess of 8 ounces except first and second class matter. Parcels limited to 100 inches, length and girth combined.

Weight limit 70 pounds.
For complete Parcel Post rates see next page.
Insure all valuable parcels.
For quick delivery, send Special Delivery and Special Delivery air mail.

Library Books: First, Second and Third Zones, and State, 3 cents for first pound or fraction, 1 cent each additional pound or fraction.

Note—On parcels for delivery in first and second zones where shortest practicable mail route is 300 miles or more, the rate is 8 cents for first pound and 2 cents for each additional pound.

C. O. D. Delivery service is applicable to third and fourth class mail and sealed matter of any class bearing postage at the first class rate. Collections up to \$200.

General Instructions

Pack well—wrap securely—address plainly.
Show name of sender.
Fragile and perishable matter should be so marked.

AIR MAIL INFORMATION

Six cents for each ounce or fraction thereof. Air mail can be insured, registered, sent C O D or special delivery when the additional fees are prepaid. It may be deposited in any mail box, but must be indorsed "VIA AIR MAIL" underneath the postage stamp immediately above the address. Air Mail boxes are located at the following points: Main W and Exchange; Main E and St Paul; Main E and Clinton av S; Main E and Elm; Main E and Stone.

For further information concerning air mail, call Main 4792, Extn 7.

FEES IN ADDITION TO REGULAR POSTAGE

Special Delivery

First Class Only—2 pounds or less, 10 cents; over 2, not over 10 pounds, 20 cents; over 10 pounds, 25 cents.

Mail Other Than That of the First Class will be given the most expeditious handling and transportation practicable, and in addition receive immediate delivery at the office of address, upon payment of the following special-delivery fees:

2 lbs. or less.....15 cents
Over 2 lbs. but not over 10 pounds..35 cents
Over 10 lbs.....35 cents
"Special Delivery" must be so indorsed.

Special Handling

(Assures first class transportation, but not special delivery service)
Fourth Class: 2 pounds or less, 10 cents; over 2, not over 10 pounds, 15 cents; over 10 pounds, 20 cents.
"Special Handling" must be so indorsed.

Money Orders

Not exceeding \$ 2.50.....	6 cents
Not exceeding 5.00.....	8 cents
Not exceeding 10.00.....	11 cents
Not exceeding 20.00.....	13 cents
Not exceeding 40.00.....	15 cents
Not exceeding 60.00.....	18 cents
Not exceeding 80.00.....	20 cents
Not exceeding 100.00.....	22 cents

Registry

Up to \$5.....	\$0.15	\$300 to \$400....	\$0.60
5 to 25.....	.18	400 to 500.....	.70
25 to 50.....	.20	500 to 600.....	.80
50 to 75.....	.25	600 to 700.....	.85
75 to 100.....	.30	700 to 800.....	.90
100 to 200.....	.40	800 to 900.....	.95
200 to 300.....	.50	900 to 1000....	1.00

Registered matter may be sent C O D. Fee for return receipt, except C O D'S, 3 cents extra, to Foreign Countries, 5 cents. Limit of C O D collection \$200. When declared value of registered matter exceeds \$1,000 a small zone rate surcharge is made.

Collect-On-Delivery

Not exceeding \$ 5.00.....	12 cents
Not exceeding 25.00.....	17 cents
Not exceeding 50.00.....	22 cents
Not exceeding 100.00.....	32 cents
Not exceeding 150.00.....	40 cents
Not exceeding 200.00.....	45 cents

Insurance

Not exceeding \$ 5.00....	5 cents
Indemnity not exceeding 25.00....	10 cents
Indemnity not exceeding 50.00....	15 cents
Indemnity not exceeding 100.00....	25 cents
Indemnity not exceeding 150.00....	30 cents
Indemnity not exceeding 200.00....	35 cents

Fee for return receipt, 3 cents extra.

Registered, insured, or C O D mail, the delivery of which is restricted to the addressee only, or to the addressee on order, will be subject to an additional fee of 10 cents at the time of mailing.

Senders' Receipts for Domestic Ordinary Mail

A receipt (certificate of mailing) is furnished the sender of domestic ordinary mail of any class upon payment of 1 cent for each piece. This fee does not insure against loss, rifling or damage, but merely furnishes evidence of mailing, and no receipt will be obtained from the addressee on delivery. Additional duplicate receipts may be obtained upon payment of 1 cent each.

AIDS TO PROPER MAILING

Write name and address plainly and completely. Place name and address of sender on all matter. Prepay postage fully on all letters and parcels. Always address mail for city delivery to street and number and request correspondents to do likewise. Use designation North or South, East or West when it is a proper part of the address and save delay in delivery. Insure valuable parcels. Wrap parcel post carefully in heavy paper and tie knots securely.

You will often gain a day's time in delivery by depositing mail as soon as it is ready.

SOCIAL SERVICE AGENCIES

Council of Social Agencies—70 North Water st. Pres. Vilas M Swan, V-Pres, Rev Gerald C Lambert, Treas, Dr Sol J Appelbaum, Asst-Treas, Mrs DeWitt B Macomber, Gen Sec, Oscar W Knott

American National Red Cross—Rochester Chapter—199 Plymouth av, S.—Chairman, George H Hawks; Exec Dir, Veronica Maher; Sec, Mrs Morton Baum; Vice-Chairman and Treas, Harold C Townson

Association for the Blind of Rochester, Inc.—439 Monroe av. Inc 1913. Chairman Board of Directors, Thos B White; Pres, Alf J Watson; Vice-pres, Edith Carter; 2d Vice-Pres, Harris Ellenwood; Sec, Ray W Smith; Treas, David F Lawless; Supt, H Frances Lewis; Auditor, Thos L McLeod. Meets 3d Tues

Baden Street Settlement of Rochester—Org 1901 152 Baden, Pres, Mrs Dexter Perkins; V-Pres, Mrs Henry M Stern; Rec Sec, Mrs Henry W Hays; Cor Sec, Mrs Saml Well; Treas, Mortimer Adler

Baptist Home of Monroe County—Fairport, N Y Inc 1904 Pres G F Laube; Sec, Harvey F Remington; Treas, Geo C Eichelman; Treas, Endowment Fund, Chas W Silcox

Boy Scouts of America—Oatlands Council—616 Mercantile bldg. Pres, Howard T Cumming; Vice-Pres, Edw F Farrow, Herbert W Cruikshank; Treas, Truman L Hall; Scout Executive, Leo M Sandefur; Assistant Scout Executives, James E Spellman, Dewey Sawyer, Wm Roberts, John Latos, Forrest Bradley

Catholic Women's Club—Organized April 28, 1922. Pres, Mrs Edw L Zimmer; Sec, Lucille C Burkhardt; Treas, Mrs Geo H Trentman. Meets 3d Mon at 215 Alexander

Charles Settlement House—445 Jay—Pres, Most Rev James E Kearney DD; Vice-pres, Rev Msgr, Wm M Hart VQ; Sec-Treas, Wm T Farrell; Head Worker, Mary Hannick

Church Home of the Protestant Episcopal Church in the City of Rochester—509 MtHope av. Org 1868 Inc 1869. Pres, Geo H Hawks; Vice-Pres, Rt Rev Bartel H Reinheimer; Sec, Joseph L Humphrey; Treas, John Craig Powers. The home receives and cares for aged women and men

Columbus Youth Association—50 Chestnut. Pres, Most Rev James E Kearney DD; Treas, Peter Tettelbach; Exec Sec, Rev Gerald C Lambert

Eastman Dental Dispensary—800 Main E. Pres, Wm Bausch; Vice-Pres, F Harper Sibley, Geo H Clark, Chas F Hutehison; Sec, Milton K Robinson; Treas, Chas P Schlegel; Director, Harvey J Burkhardt

Family Society of Rochester, Inc (formerly The Family Welfare Society)—31 Gibbs. Pres, F Bitter Shumway; V-Pres, Mrs David A Haller, Vilas M Swan; Treas, Leroy E Snyder; Gen Sec, Edith Holloway

Genesee Settlement House—10 Duke. Pres, Most Rev Jas E Kearney DD; Treas, David F Lawless; Head Worker, Ann Gray

Hiltsdale Children's Center—1188 Monroe av. Org 1887. Inc 1888. Board of Trustees: Pres, Chas F Hutchison; Vice-Pres, Elmer Fairchild; Sec, Carl F W Kaelber; Asst, Sec, Francis S Macomber; Treas, Herbert J Winn; Asst Treas, Herbert J Noble; Dir, Kenneth L Messenger. Meets 3d Thursday. Annual meeting in May. Board of Managers: Pres, Mrs Clarence P Thomas; 1st V-Pres, Mrs Freeman C Allen; 2d V-Pres, Mrs Geo C McKinstry; Rec Sec, Mrs Leonard Lee Bacon; Cor Sec, Mrs Aug G Oddlarrison. Meets last Wednesday.

Humans Society for the Prevention of Cruelty to Animals—Pres, Henry G White; Sec, Mrs W L Hughes; Treas, Allan E Kappelman; Supt and Pound Master, Wm J Boylark. Meets second Thurs at 283 Master, Wm J Boylark. Meets second Thurs at 283 Master, Wm J Boylark. Meets second Thurs at 283 Master, Wm J Boylark.

Central av Workshops Inc—202 Alexander. Pres, Dr G Kirby Collier; Vice-Pres, Chas A LaBounty; Sec, Lee McCann; Treas, Dr Rufus B Grain, Exec Sec, Ella E Wiso

Jewish Children's Home (for orphan children)—Inc 1914. 27 Gorham. Pres, Mrs Alf Hart; Vice-Pres, Hyman Kolbe, Mrs Beattie Amundson; Sec, Bend Robfog-er; Treas, Frederick Blegger; Supt, Jacob S Hollander. Directors meet the first Monday

Jewish Children's Placement & Guidance Bureau of Western New York—Pres, Manuel Goldman; V-Pres, Mrs Abram Kain; Sec-Treas, Arthur M Lowenthal; Exec Dir Wm M Samliaky, 144 Baden

Jewish Home for the Aged—1162 StPaul. Honorary Pres, Lester Nusbaum; Pres, Garson Meyer; Vice-Pres, Allen Eber, Abr Cherkass, Saml Bloom; Sec, Ben Levy; Treas, Saml Ball, Solomon Levin, Abr Plaksin; Exec Sec, Belle Fenig; Supt, Saml Krawetz

Jewish Welfare Council—144 Baden. Pres, Jos E Silverstein; Vice-Pres, Rabbi Henry Fisher, Mandel Goldman; Sec, Harry L Samuels; Treas, Reuben A Dankoff; Social Workers, Anna Wolfe, Stella J Schifrin; Exec Dir, Israel J Jacobson

Jewish Young Men's and Women's Association—Org. 1906. Inc. 1907. University av at Andrews. Pres, Jos Goldstein; Vice-Pres, Mrs Mortimer Adler, Chas W Markus; Sec, Jos E Silverstein; Exec Sec, Tobias Roth; Treas, Harry D Goldman. Directors meet second Wed. Annual meeting in Oct

Legal Aid Society of Rochester, 25 Exchange. Pres, Joseph P MacSweeney; Vice-Pres, Mrs Arthur Sutherland Jr; Sec, Emery A Brownell; Treas, Don C Allen

Lewis Street Center—57 Lewis street. Pres, Dr Edwin Fauer, Vice-Pres, Carl Lauterbach; Sec, Mrs E S Ingersoll; Treas, John E Schubert; Dir, Miss Louise Naylor

Lutheran Inner Mission Society—427 N Clinton av. Pres, Grover Cliequennoi; Vice-Pres, Fred Hussey; Sec, Pastor Eug Stowell; Treas, Arth Sedler; Exec-Sec, Pastor Fredk W Helms

Masonic Service Bureau, 875 Main E

People's Rescue Mission, 134 Front. Pres, Augustus S Mertz; Vice-Pres, Chas W Carson; Sec, Wm H Zimmer; Treas, Howard J Henderson; Supt, Herbert F Baker

Rochester Catholic Charities—Inc. 1917. Pres, Most Rev James E Kearney DD; Diocesan Director, Rev Gerald C Lambert; Vice-Pres, Augustus Cunningham; Sec, Wm T Farrell; Gen Sec, Wm T Nolan. Executive Offices, 50 Chestnut st. Family and Child Welfare Dept, 39 State. Kathleen d'Olier, Exec Dir

Rochester Children's Nursery—138 Exchange. Inc. 1857. Pres, Mrs James E Gleason; Vice-Pres, Mrs John H Kitchen; Treas, Mrs Frank Ocumpaugh; Cor Sec, Mrs Fredk T Pierson; Rec Sec, Mrs Don Colt; Supt, Mrs Cora L Hannas. The monthly meeting last Thurs. Annual meeting last Thurs in April.

Rochester Community Chest, Inc—70 N Water. Pres, Bernard E Finucane; Vice-Pres, Raymond N Ball, Walter L Todd, Theo C Briggs; Treas, Mortimer Adler; Sec, Henry H Stebbins Jr; Mgr, Harry P Wareham

Rochester Community Home for Girls Inc—293 Troup. Pres, Mrs Ralph I Hoyt; Vice-Pres, Mrs Chas B Forsyth, Mrs Bartel Reinheimer; Sec, Mrs Harry F Thomas; Treas, Mrs Halton D Bly; Exec Sec, Mildred P Carpenter

Rochester Council of Girl Scouts Inc—78 N Water. Comr, Mrs Wilber B B Winans; 1st Depy Comr, Mrs Howard J Henderson; 2d Depy Comr, Mrs David Bellamy; Sec, Mrs Herbert P Lansdale Jr; Treas, Mrs Dwight C DeWeese; Exec Sec, Mrs Miriam B McIntyre

Rochester Female Charitable Society—Org. 1822, for the relief of the sick poor. Pres, Mrs Charles Hoening; Vice-Pres, Mrs W D Ellwanger; Treas, Miss Anna D Hubbell; Rec Sec, Mary Laird; Cor Sec, Henrietta Hamilton. Meets first Tues. Election of officers in April

Rochester Friendly Home—3156 East av, Brighton. Org. 1849. Inc 1856. Pres, Mrs Jas C Dwyer; Cor Sec, Susan F Pond; Treas, Mrs Wm B Macomber; Matron, Mrs Emma B Packard. Meets third Tues.

Rochester Guidance Center—31 Gibbs. Pres, Dr Howard Seymour; Vice-Pres, Mrs Louis Langie, Mrs Leonard Lee Bacon; Sec, Mrs Jesse Horwitz; Treas, Frank P Beattie; Dir, Edie E Welsh

Rochester Hospital Service Corp—41 Chestnut Sherman Meach, Dir

Rochester Jewish Relief Organization Inc. Est 1914. Pres, Sidney Grossman; Rec Sec, Jack Taylor, 521 Clifford av. Meets 2d and 4th Monday at Joseph av cor Sullivan. Election July and January

Rochester Presbyterian Home Inc, 256 Thurston rd. Supt, Marie M Kenny

Rochester School for the Deaf, 1545 StPaul

Rochester Society for Prevention of Cruelty to Children, 156 Plymouth av N—Inc. 1875. Pres, John W Remington; Vice-Pres, Wm F Shepard, Mrs Isaac Adler, Henry W Kimmel; Rec Sec, Mrs Hugh Shirey; Cor Sec, Mrs Jesse Horwitz; Treas, Mrs John Finucane; Asst Treas, Mrs Mortimer Anstice; Executive Director, Robt M Mulford. Meets second Thurs. Officers elected in January

StAnn's Home for the Aged, 1971 Lake av. Sister M Geralda, supt

StElizabeth's Guild House, Mrs Esther U Kane, resident director, 1 Field

StJohn's Home for the Aged, 1282 South av. Pres, Rev Fredk Diehm; Treas, Wm G Staudenmaier; Supt, Lillian Rothe

Salvation Army—64 North. Major John H Brunner. Pres, Hon Charles S Owen

Travelers Aid Society—N Y C Station. Pres, Hugh Shirey; Vice-Pres, Judson Parsons; Treas, Ruth A Hemenway; Executive Sec, Mrs Emily A Madden; Sec, Mrs H Wilbur Graves

Tuberculosis and Health Assn of Rochester and Monroe County Inc—Pres, Jos P MacSweeney; Vice-Pres, John C Malloch, Dr John G Lloyd, Harry B Crowley, Dr B J Slater; Treas, Frank H Goler; Exec Sec, Marie Goulett, Acting. Office, 277 Alexander

Vacation Home SanRafael Dr. Chairman, Mrs T Clarence Oppenheimer; Co-Chairman, Mrs Saml Well; Sec, Mrs Jesse Horwitz; Treas, Mrs Nelson Corkhill

Visiting Nurse Association—Director, Cora Warrant, RN. Board of Directors: Pres, Mrs E Clinton Wolcott; V-Pres, Dr J D Craig Potter; Cor Sec, Mrs C Schuyler Davis; Rec Sec, Darrow A Dutcher; Treas, J Sawyer Fitch; Asst Treas, Donald R Clark. Office 130 Spring

Woman's Educational and Industrial Union—Org. 1893. Pres, Mrs A W Beaven; Rec Sec, Mrs Leo Busling; Treas, Mrs Hiram Sibley. About 350 members. Directors meet second Fri at Women's Union, 86 North. Officers elected in May

Young Men's Christian Assn—Org. 1875. Inc. 1880. General Offices, Gibbs cor Grove pl. Pres, Gilbert J C McCurdy; Vice-Pres, J Sawyer Fitch, Robt C Talt; Rec Sec, Mercer Brugler; Treas, Geo B Caudle; Gen Sec, Herbert P Lansdale Jr. Board of Directors meets third Mon except July and August. Annual meeting in April

Central Branch—100 Gibbs. Chairman, Jackson Gallup

Maplewood Branch—Driving Park av near Lake av Chairman, Archibald Robinson; Exec Sec, Frederick J Weismiller

Railroad Department—9 Hyde park. Organized 1881 Sec, Frederick D Lamb; Treas, Richard Bernhardt. Business meetings first Mon

Monroe Branch—797 Monroe av. Chairman, Carl Lauterbach, Exec Sec, Robt W Brown

Arnett Branch—Arnett bldg cor Kenwood av. Chairman, Robt M Bruce; Sec, Arth L Taylor

West Side Branch for Colored Men—138 Adams. Chairman, John G Lee

Women's Auxiliary—Org. 1885. Pres, Mrs Jack L Gorham; Vice Pres, Mrs Thos Jameson; Rec Sec, Mrs Robt W Bunting; Member Sec, Mrs Boss J Hutchins; Treas, Mrs H G Whitmore. Meets 1st Thurs Oct and May, in Y M C A bldg, 100 Gibbs. Election of officers in May

Young Women's Christian Assn.—Org. 1888. Administration bldg, 190 Franklin; residence 175 Clinton av N, Kent Hall, 57 S Washington; Mary Thompson Ellison House, 28 Portsmouth ter; Branch for Colored Women, 193 Clarissa. Camp-Onanda Canandaigua Lake. Honorary Pres, Mrs Henry A Strong; Pres, Mrs Arthur J Gosnell; Vice-Pres, Mrs Geo Oest; Vice-Pres, Jean C McCurdy; Rec Sec, Mrs John A Lowe; Treas, Mrs Bernard Held; Gen Sec, Miss Agnes R Kidder. Election of officers in May

Court Rochester, No 1687—Org 1894. C R, Lottie S Quade; Fin Sec, Chas D Quade; Rec Sec, Mary Orth. Meets 2d and 4th Fri at 868 South av
Companion Court Louise, No 223—Org 1889. C R, Mae Decker; Fin Sec, Cordia Mortison; Rec, Sec, Charlotte White. Meets 4th Wed at Hotel Seneca
Companion Court Flower City, No 539—Org 1921. Chief Ranger, Mary Shenton; Fin Sec, Ina M Decker; Rec Sec, Emily Aulburn. Meets 2d and 4th Wednesdays, 668 South av. Election of officers in March
Companion Court Gladiolus, No 725—C R, Caroline Wolfe; Fin Sec, Hattie Glosser; Rec Sec, Mary Alexander, 39 Joslyn rd; Treas, Ella Grah

INDEPENDENT ORDER OF ODD FELLOWS
Odd Fellows' Temple, 11 Clinton av N

Monroe District, No 1
District Grand Committee—Sec, Frank Pucci, 1022 Dewey av. Meets second Wed in Jan, April, July and Oct at 11 Clinton av N
Aetna Lodge No 834. Rec Sec, Lloyd Davis, 905 Main, E Rochester. Meets Wed at I O O F Hall
Genesee Lodge, No 3—Meets 1st, 3d and 5th Fri at 11 Clinton av N
Irondequoit Lodge No 40—Meets Tues, 2841 Culver rd
Teoronto Lodge, No 8—Meets Mon at 11 Clinton av N
Rochester Lodge, No 66—Meets Tues at 11 Clinton av N
Gloriam Savonarola Lodge No 367—Meets Wed at 710 Lake av
Tippecanoe Lodge, No 629—Meets Fri at 44 State
Webster Lodge No 742—Meets Tues at Webster, N Y

Monroe District No 2

District Grand Committee—Sec, Clarence Green, 11 Clinton av N. Meets second Wed in April, third Wed in June, September and November at 11 Clinton av N
Flower City Lodge, No 565—Meets Wed at 700 Main E
Unity Lodge No 738—Meets Fri at StPaul Blvd and Titus av
Valley Lodge No 109—Meets Wed at 290 Gregory
1st Battalion—Grand Canton Stebbins No 2, Capt Edw T Howden

Monroe District No 3

District Grand Committee—Sec, Joseph L Kirchmaler, 140 Glenwood av
Humboldt Lodge, No 138—Meets Wed at 11 Clinton av N
Frankfort Lodge, No 579—Rec Sec, Geo Helmboldt. Meets Wed at 217 Lake av
Gideon Lodge No 785—Meets Tues at JYMA
Stonewood Lodge No 4—Meets Wednesday at 4850 Lake av

Monroe District No 4

District Grand Committee—Sec, Leonard Phillips, 30 Scio. Meets second Wed in Jan, April, July and Oct at 11 Clinton av N
Central Lodge, No 688—Meets Tues at 11 Clinton av North
South Avenue Lodge, No 733—Meets Mon at 668 South av
Zayat Lodge, No 784—Meets Fri at cor 549 Joseph av and Sullivan

Patriarchs Militant

Grand Canton John W Stebbins, No 2—Organized 1886. Meets second Fri at 11 Clinton av N

Rebekah Lodges

Monroe District, No 1—D D P, Mrs Emeline A Spindler
Monroe Rebekah Lodge, No 1—Meets first and third Wed at 11 Clinton av N
Lakeside, Rebekah Lodge, No 21—Meets second and fourth Thurs at 4381 Lake av
Germana Rebekah Lodge, No 83—Meets second Wed at 11 Clinton av N
Monroe District, No 2—N G, Catherine Miller, 14 Sheridan
Guiding Star Rebekah Lodge, No 44—Meets first and third Tues at 11 Clinton av N
Titania Rebekah Lodge, No 170—Meets first and third Thurs at 11 Clinton av N
Rochester Rebekah Lodge, No 174—Meets first and third Fri at 11 Clinton av N
Agatha Rebekah Lodge, No 218—Meets second and fourth Tuesday at 11 Clinton av N
Leah Rebekah Lodge, No 852—Meets first and third Mon at 11 Clinton av N
Venus Rebekah Lodge, No 628—Meets second and fourth Thurs at 11 Clinton av N
Grace Rebekah Lodge, No 84—Meets second and fourth Thurs at 11 Clinton av N
Highland Rebekah Lodge, No 172—Meets first and third Tues at 668 South av
Melba Rebekah Lodge, No 832—Meets first and third Thurs at 11 Clinton av N

Patriarchal Branch

D.D.O.P., Herman J Hayden, 1133 W Elm, East Roch.
Mount Hope Encampment, No 2—Scribe, L R Latimer, 283 Hamilton street. Meets first and third Thursdays of each month at 11 Clinton av N
Teutonia Encampment, No 55—Scribe, Otto Schanz. Meets second and fourth Thursdays of each month at 11 Clinton av N
Alliance Encampment, No 185—Scribe, B C Doersam, 880 Barton. Meets first and third Fridays of each month at 11 Clinton av N

Associations

Ancient Mystic Order Samaritans of the United States and Canada—Kheder Khan Sanctorum No 136, G M, Jacob Uetz; V G M, Jesse Weaver; G C, Robt V Schlafer; Registrar, Erwin C Franke; A M O S, meets 2d Sat of each month at 441 East av
Odd Fellows' Fraternal Union—Meets first Tues at 11 Clinton av N
MtHope Burial Lot Assn—Meets semi-annually at 11 Clinton av N
Monroe County Past Grands' Assn—Meets in April, August and Dec, at 11 Clinton av N

KNIGHTS OF PYTHIAS

30th Pythian District—S D G C, Orrin A Senzel; D G C, Benj Gold, 4 Arlington
Aurora Grata Lodge, No 39 Org 1870. K of R & S, Gordon N Maas. Meets 1st and 3d Mon at 441 East av
Bluecher, No 93—K of R & S, Arthur Friedler, 327 Parsells av. Meets first and third Mon at 11 Clinton av N. Election of officers in Dec
Rochester Lodge No 593—K of R & S, Harry R Bloch, 57 Northview ter. Meets second and fourth Thursdays at 113 Clinton av N
Uniform Rank—Anson Company, No 16—Org 1888. Capt, Albert G Ritter; Recorder, William Schleber, 144 Front
Insurance Dept, Section No 194—Org 1878. Sec, William Schleber, 144 Front. Annual meeting in Dec
Pythian Sisters, Rochester Temple, No 31—Org 1892. M E C, Anna M Steinfeldt M of R & C, Celia E Petz, 1828 StPaul. Meets 2d and 4th Fri at 457 Main E. Election of officers in Dec
Monroe Temple, No 33—Org 1897. M of R & S, Mrs Emma Schleber. Meets first and third Thurs at 668 South av. Election of officers in Dec
Jay Lodge, No 639—Keeper of R & S, Harry Hamburg, 41 Main E. Meets 1st, 3d and 5th Mondays, Moose Temple, 441 East av

KNIGHTS OF ST JOHN

First District Commandery of New York—Colonel, Fredk J Wegman; Adjutant, Emil Eckert; Sec, John G Bittner, 120 Versailles rd. Meets first Fri of March, June, Sept, and Dec, at StJoseph's Church Meeting Hall. Election of officers every five years in Dec
StMauritius Commandery, No 9—Rec Sec, Geo Hummel, 57 Sullivan. Meets second Sunday each month during winter and 2d Tues during summer at 108 Franklin
StBoniface Commandery, No 25—Rec Sec, Frank D. Kobler, 221 W. Main St. Meets first and third Thurs at 221 W. Main St.
St. Peter and Paul's Commandery No 28—Rec Sec, Vincent Peters, 12 Delano. Meets third Mon in SS. Peter and Paul's Church Hall, Brown st
StEustace Commandery, No 39—Rec Sec, Edw G Brauch, jr 573 Wilkins. Meets first Wed at 108 Franklin
StMichael Commandery No 40—Rec Sec, Joseph T Riesenberger, 952 Joseph av. Meets first Mon at Our Lady of Perpetual Help Church Hall, Joseph av
StGeorge Commandery, No 43—Rec Sec, Joseph M Weismiller, 47 Teralta pl. Meets first Wed at St-Michaels Hall
Holy Rosary Commandery, No 106—Rec Sec, Emery C Pixley, 6 Finch. Meets 4th Monday at Holy Rosary Hall
Holy Family Commandery, No 197—Rec Sec, William C Schwab, 289 Campbell. Meets second Tues in Holy Family School Hall
StBernard Commandery, No 272—Rec Sec, John A Clair, 49 Rogers av. Meets second Wed at 34 Empire Blvd, StAmbrose Hall
Pro Cathedral Commandery No 291—Rec Sec, Edmund Hoepfl, 68 Fillingham dr. Meets 4th Tues at Sacred Heart Hall
Our Lady of Mount Carmel Commandery No 308—Rec Sec, Jos Panepinto, 487 Scio. Meets 4th Mon at Mount Carmel Hall
StLouis Commandery No 17—Rec Sec, August Scheuch, 33 Carter. Meets 4th Mon at StAndrews Hall

LABOR ORGANIZATIONS

Central Trades and Labor Council—Pres, Henry D O'Connell; Sec, Anthony A Capone. Meets alternate Thurs at 113 N Fitzhugh
Allied Printing Trades—Sec, Julius J Loos. Meets 2d Fri at 85 Main E
Amalgamated Clothing Workers of America Rochester Joint Board—Sec, Jas B Whitaker. Meets alternate Thurs at 476 Clinton av N
Amalgamated Lithographers of America, No 11—Pres, Rudolph Duchin; Sec, Wm Hilsdorf; Rec Sec, Howard Roberts. Meets second and fourth Wed at 85 Main E
Asbestos Workers, No 26—Bus Agt, Burton F Belkitch, 813 Nantucket rd. Meets second Wed at 113 N Fitzhugh
Bakers' Union, No 14—Sec, Joseph Stenglein, 580 StPaul. Meets fourth Saturday at 580 StPaul
Bakery Drivers Union No 791—Business Agt, Danl Kelly, 113 N Fitzhugh
Barbers' Union, No 246—Sec, Samuel Getlette, 112 N Fitzhugh. Meets 3d Tues at 113 N Fitzhugh
Bartenders No 171—Sec, E Kovceski. Meets second

and fourth Sun at 90 State
Boiler Makers, No 229—Sec, Ernest G VanDyne, 93 McKinley. Meets second and fourth Tues at Eagles Hall, 22 N Washington
Bookbinders, Nos 80 and 155—Sec, Benj Shulman, 622 Conkey av. Meets at 35 Main E
Boot and Shoe Workers' Council No 3—Treas, Bernadine Noble. Meets last Fri of every month at 16 State
Boot and Shoe Workers, Cutters & Fitters, No 137 Treas, Bernadine Noble. Meets at 113 N Fitzhugh
Boot and Shoe Workers Mixed Union, No 15—Treas, Bernadine Noble. Meets alternate Thursdays at 113 N Fitzhugh
Brewery and Soft Drink Workers, No 57—Sec, Jos Walters. Meets every 2d and 4th Monday at 580 StPaul
Bricklayers, Masons, Plasterers, No 11—Sec, Walter Hayden, 18 N Wash. Meets every Fri at 18 N Wash
Brotherhood of Railway Clerks NYC Div—Meets 4th Mon at 113 N Fitzhugh
Building Material Drivers and Helpers Local Union, No 826—Pres, John W Pellett; Vice-Pres, John E Anderson; Sec-Treas, Anthony A Capone. Meets every Monday at 113 N Fitzhugh rm 3
Card & Label League—Sec, Seymour L Scott, 106 Elba. Meets alternate Thurs at 113 N Fitzhugh
Carpenters' District Council—Sec, Arthur W White, 113 N Fitzhugh. Meets 2d and 4th Wed at 113 N Fitzhugh
Carpenters, No 72—Sec, Ralph Brye, 113 N Fitzhugh. Meets every Mon at 113 N Fitzhugh
Carpenters, No 231—Sec, John Heiden. Meets second and fourth Tues at 113 N Fitzhugh
Carpenters, No 240—Sec, Bert DeMocker, 8 Hulbert av, Fairport. Meets first and third Thursday at 8 Hulbert av Fairport
Cigar Makers' Union, No 5—Sec, Charles Bosdyck. Meets second Thursday
Clothing Cutters, No 136—Fin Sec, Frank H Bush, 1058 Main E. Meets 3d Fri
Coal & Coke Truckmen Union No 291—Sec, Matt VanDame. Meets 1st and 3d Mon at 580 StPaul
Coopers' Union, No 68—Sec-Treas Thos McLaughlin, 9 Hudson av
Electrical Workers, No 86, Meets 2d and 4th Fri at 113 N Fitzhugh
Elevator Constructors Local No 27—Pres, John Mansielje; Fin Sec, Fred G Dengler, 120 Coolidge rd; Rec Sec, Arthur E Fegan, 214 Roycroft dr, Bus Rep, Oscar Nielsen, 663 Seward. Meets 2d and 4th Fri at 35 Main E
Engineers, Operating, Local 71, IUOE—Sec, Ernest Brumidge, 329 Seward. Meets 2d and 4th Wed at 22 N Wash
German American Typographia No 5—Sec, Fred Spier, 285 Hague
Glass Bottle Blowers Association, Local No 26—Sec, Ernest Helms, 54 Gardiner av. Meets 3d Wed
Glaziers Union No 677—Sec, Jos Kemp. Meets 1st and 3d Tues at 86 State
Hoisting and Portable Engineers, No 832—Business Agent, H Orville Warner. Meets every other Monday at 68 Mill
Ice Handlers, No 898—Sec, N Grapensteter. Meets 2d and 4th Wed at 22 N Wash
Iron Molders, No 13—Pres, Chas J Curran, 252 Caroline; Sec, Wm H Burke. Meets 1st and 3d Wednesdays at 35 Main E
Ironworkers Local No 33—Bus Agt, Harry E Keys, 360 S Plymouth. Meets at 360 S Plymouth
Laborers, No 435—Sec, Vincent Mistratta, 113 N Fitzhugh. Meets 2d and 4th Fri at 113 N Fitzhugh
Lathers Local, No 14—Sec, Chas Wilson. Meets every 2d Tuesday at 90 Mortimer
Laundry and Dry Cleaning Drivers Union No 925—Business Agt, Danl Kelly, 113 N Fitzhugh
Letter Carriers, No 210—Sec, J Harry Herbst, 52 Canton. Meets first Sat at 113 N Fitzhugh
Machinists, No 93—Sec, Arth G Stevens, 85 Main W rm 207. Meets 2d and 4th Mon at 96 State
Metal Polishers, No 113—Meets first and third Fri at 22 N Wash
Milk Drivers, No 645—Sec-Treas, George H Streeter 29 Home pl. Meets first and third Fri at Highland Hall
Moving Picture Machine Operators, No 253—Sec, Floyd B Spencer, 52 N Water. Meets 2d Tues at cor N Water and Mortimer sts
Operating Engineers No 71—Sec, Ernest B Brumidge, 529 Seward. Meets 2d and 4th Wednesday at 22 N Wash
Painters & Decorators Local No 150—Sec, Thos Cameron. Meets every Monday at 86 State
Photo Engravers, No 22—Sec, Jack Shea. Meets first Fri at Sagamore Hotel
Plumbers and Steamfitters, No 13—Sec, Albert Byrne. Meets 2d and 4th Tues at 113 N Fitzhugh
Post Office Clerks, Local 245—Pres, Geo G Case; Rec Sec, Elmer J Williams. Meets second Sat at 22 N Wash
Pressmen and Assistants, No 38—Sec-Treas, Mielh Costa, 231 Saratoga av. Meets 3d Friday at 85 Main E
Rochester Musicians Protective Assn, Local No 66, A F of M—Sec, Chas L VanHaute. Meets second Sun of Jan and Feb at 81 Clinton av N

ABBREVIATIONS

acct accountant	dr drive	meter rdr meter	ret retail
address addressograph	drftsmn draftsman	reader reader	Rev Reverend
adv advertising	drsmkr dressmaker	mfg manufacturing	rptr repeater
agrl agricultural	e or E East	mfr manufacturer	rte mn route man
agt agent	elec electrical	mgr manager	rtg aide routing aide
al alley	electn electrician	mimeo opr mimeograph operator	Ry Railway
alt alteration	electro electrotypewriter	mkr maker	RyMIS Railway Mail Service
Am American	elev elevator	mkt market	s or S South
appr apprentice	embdr embroiderer	mldr molder	san sanitary
apts apartments	emp employe	mlnr milliner	Sav Savings
archit architect	emp agcy employment agency	mn man	sch school
asmbler assembler	eng engineer	mono monotype	se southeast
Assn Association	enr engraver	mse opr Morse operator	sec secretary
assoc associate	es east side	msgnr messenger	sergt sergeant
asst assistant	est estate	mstr master	shp shipping
atndt attendant	exam examiner	mstr mech master mechanic	sht mil wkr sheet metal worker
atty attorney	exch exchange	mte mn maintenance man	slsmgr salesmanager
aud auditor	exec executive	mtrmn motorman	slsmn salesman
auto automobile	exp express	mus music	slswn saleswoman
auto opr automatic operator	expmn expressman	multi opr multigraph operator	smstrs seamstress
av avenue	fcy factory	mut mutual	soc society
Δ telephone	flgmn flagman	n or N North	soir solicitor
bet between	fnshr finisher	Natl National	spl special
bgemn baggage man	formn foreman	ne northeast	sq square
bkbndr bookbinder	forwn forewoman	nr near	sq south side
bkpg mach opr bookkeeping machine operator	frt freight	ns north side	sta station
bkpr bookkeeper	ft foot	nw northwest	sta eng stationery engineer
bldg building	ftr fitter	© property owner	statn statistician
bldr bullder	furn furniture	ofc wkr office worker	stn stenographer
blk block	furn rms furnished rooms	opp opposite	stereo stereotyper
blksmith blacksmith	furngs furnishings	opr operator	stmfr steamfitter
blrmkr boiler maker	gasftr gasfitter	oste osteopath	str setter
blvd boulevard	gdnr gardener	pass passenger	supt superintendent
br branch	gds goods	pat patent	supvr supervisor
brklyr bricklayer	genl general	pdtr peddler	surg surgeon
brkmn brakeman	govt government	pharm pharmacist	sw southwest
cabtmkr cabinetmaker	gro grocer	photog photographer	swtchmn switchman
capt captain	h householder	phys physician	tab mach opr tabulating machine operator
carp carpenter	haldrsr hairdresser	pk park	techr teacher
cash cashier	hd hand	pkwr packer	techr technician
Central Library Church	hdqrs headquarters	pl place	tel telegraph
chef chauffeur	hng hanger	plmbr plumber	teleg telegraph
chf chief	hosp hospital	plshr polisher	ter terrace
clv civil	hsekr housekeeper	plstr plasterer	tmkpr timekeeper
clk clerk	Hts Heights	pntr painter	tmstr teamster
clnr cleaner	impls implements	PO postoffice	tndr tender
collr collector	impr importer	PS Public School	trans transportation
coml commercial	inc incorporated	pres president	trav traveling
comn commission	ins insurance	prfrdr proofreader	treas treasurer
comnr commissioner	inspr inspector	prin principal	twp township
compt comptometer	instr instructor	priv sec private secretary	undtkr undertaker
cond conductor	int rev internal revenue	prod produce	undwrtr underwriter
cnfr confectioneer	jr junior	prof professor	uphol upholsterer
cont consulting	fwl jeweler	prop proprietor	US United States
contr contractor	kpr keeper	prov provisions	USA United States Army
cor corner	lab laborer	prsfdr press feeder	USMC United States Marine Corps
corres correspondent	laby wkr laboratory worker	prsr presser	USN United States Navy
ct court	lbr lumber	ptrnmkr patternmaker	vet veterinary
custdn custodian	lieut lieutenant	pub publishing	vulc vulcanizer
ctr cutter	lno linotype	publ publisher	w or W West
del delivery	litho lithographer	purch purchasing	whol wholesale
dep deputy	lndrs laundress	r resides or rooms	whseman warehouseman
dept department	lndrymn laundryman	R C Roman Catholic	wid widow
dicta dictaphone	ltd limited	RD Rural Delivery	wkr worker
dietn dietitian	mach machinist	real est real estate	wks works
dtr director	mdse merchandise	rec receiving	ws west side
dispr dispatcher	mech mechanic	rep representative	wichmn watchman
dist district	mechl mechanical	reprmn repairman	ydmn yardman
dly division	mer merchant	restr restaurant	ydmstr yardmaster
dly dealer	Met Metropolitan		
dmnstr demonstrator			
do ditto or same			
dom domestic			

ABBREVIATIONS OF GIVEN NAMES

Abraham Abr	Catherine Cath	George Geo	Richard Rchd
Alexander Alex	Charles Chas	James Jas	Robert Robt
Aldred Alf	Daniel Danl	Joseph Jos	Samuel Saml
Archibald Arch	Edward Edw	Katherine Kath	Solomon Sol
Arthur Arth	Elizabeth Eliz	Margaret Margt	Stephen Steph
August Aug	Eugene Eug	Michael Michl	Theodore Theo
Benjamin Benj	Frederick Fredk	Patrick Patk	Thomas Thos
10-40			William Wm

MONROE COUNTY SAVINGS BANK

TWO CONVENIENT OFFICES

35 STATE ST.

2 EAST AVE.

POLK'S ROCHESTER CITY DIRECTORY 1944

Copyright, 1943, by R. L. Polk & Co., Inc.

Wife's Name—Appears in parentheses following husband's name when obtainable.

Removals—Against names showing removals from the city, the post office is given; if into another state, both the post office and state are given.

Deaths—The date of death of citizens whose names appeared in the Directory, dying during the past twelve months, is recorded against the name in the present book.

For List of Abbreviations see opposite page
Central Library of Rochester and Monroe County - City Directory Collection - 1944

SPECIAL ABBREVIATIONS

B&O Co.....	Bausch & Lomb Optical Co	NP Co	Niagara Power Co
B&O.....	Baltimore & Ohio Railroad	NYC	New York Central Railroad
Br.....	Brighton	Penn RR.....	Pennsylvania Railroad
C of C.....	Chamber of Commerce	Ptsfd	Pittsford
Cld Wtr.....	Cold Water	RG&E Corp.....	Rochester Gas & Electric Corp
EK Co.....	Eastman Kodak Co	RT Corp.....	Rochester Telephone Corp
Erle RR.....	Erle Railroad	RW&O.....	Rome, Watertown & Ogdensburg Railroad
F Pk.....	Fashion Park	Roeh	Rochester
Fpt	Fairport	SC Co.....	Stromberg Carlson Co
Ga	Gates	SL&C.....	Sibley, Lindsay & Curr Co
GE Co.....	General Electric Co	SVO	Socony Vacuum Oil Co
GRYS Co.....	General Railway Signal Co	S&G Co.....	Sargent & Greenleaf Co
Gr	Greece	SPARS.....	Women's Reserve U S Coast Guard
HOLC	Home Owners Loan Corp	TI Co's.....	Taylor Instrument Companies
Hnra	Henrietta	WACS	Women's Army Corps
Ironrd	Irondequoit	WAVES.....	Women's Reserve U S Naval Reserve
K Pk	Kodak Park	Web	Webster
L Pk	Lincoln Park	WUT Co.....	Western Union Telegraph Co
LVRB	Lehigh Valley Railroad	Y&E Mfg Co.....	Yawman & Erbe Mfg Co

Alphabetical List of Names

A B C Embroidery (Paula B Lendt) 616 N Goodman
A B C FUELS INC
Frank E VanLare pres-treas coal, coke and fuel
oils 407 Chilli av tel Genesee 7500
A B C Sales Co (Mrs Anna Becker) adv novelties 210
Cypress
A B C Systems & Service (Jos C D'Aprile) acctg 16
Main W rm 536
A B C Tool & Die Co Inc, John A Ryan pres Clive S
Milligan sec-treas tool mfrs 21 Klein
A B C Washer Shop (Albert G Jung) washing ma-
chines 209 Ridge rd E
A-No-One Polish Co (Mrs Martha V Magill) polish
mfr 371 Flint
A-1 Amusement Co (Martin B Levin and Thos Cohen)
192 Clinton av N
A P W Paper Co, Wm W Allair rep 14 Franklin rm
703
Aab Aug B (Rose B) lab h 82 Aab
—Bessie M wid Henry M h 374 Aberdeen
—Dorothy C film wrk EK Co r 82 Aab
—Wm B sht mtl wrk 54 Stewart h 470 Lake View
pk
—Wm W, USA r 470 Lake View pk
Aamon John H clk 1000 Lexington av r Atlantic av
Pennfield

Aarnio Henry r 42 Rand
Aaron Pearl r 26 Holland
—Sara maid 1410 Highland av
Abascio Jos (Josephine) lab h 78 Whitney
Abate Angelo (Margt) mech h 246 Bronson av
—Carmelo (Mary) mason h 44 Gorham
—Frank (Rose) h 41 Martin
—John r 294 Adams
—Leo r 294 Adams
—Michalina wid Michl h 47 Lime
—Sami (Angelina) h 294 Adams
—Sami Jr r 294 Adams
Abato Antonio (Tomatina) gro h 1354 StPaul
Abballe Thos A (Sarah) lab h 7 Albow pl
Abbamone Lester (Anna) USA r 53 Waverly pl
Abbamonte Ceclia clk r 728 Broad W
—Jos (Angelina) mach 56 Allen h 728 Broad W
Abbate Angelina wid Vincent h 41 Lowell
—Frank (Rose) lab h 48 Martin
—Sarah playground dir r 41 Lowell
Abbatt E Barter (Lily) slsmn h 206 Carling rd
Abbedessa Angelo (Eugene-Jose) beauty shop 137 East
av r 842 Lauritan rd Ironrd
Abberger Claire H Mrs h 543 Averill av
—Florence A wid Fredk G h 554 Hudson av
—Geraldine F sec r 554 Hudson av

ABBERGER
—Harold F r 554 Hudson av
Abbert Claude P (Martha E) physclst 95 Ames h
RD 1 Churchville
Abbey Abigail wid Walter C h 356 Brooks av
—C Robt (Marjorie L) state editor Times-Union h
50 Collingsworth dr Br
—Cath G Mrs h 74 Warner
—Dorothy camera wrk h 251 University av
—Edna L wid Byron S h 118 Argyle
—Edw F (June) mach 585 Blossom rd r 197 Earl
—J Walter ofc clk r 356 Brooks av
—M Sanford v-pres-treas Bilt-Rite Wood Products Inc
1880 East av and bldg contr 2040 do r 265
Chelmsford rd Br
—Richd J film wrk EK Co r 74 Warner
—Robt S (Isabel E) toolmkr h 303 Kenwood av
—Ruth L Mrs sec 720 Lexington av r 305 Chelmsford
rd Br
—Shirley tel opr r 203 Rowley
—Virginia K clk r 74 Warner
—Wm student r 155 Raleigh
Abbingdon Chas F (Frances) gdnr h 198 Almond
Abbondenzici Egidio grinder 50 Butter r 59 Clark
av
—Louis bldg supt 6 State h 292 Snake av Ironrd