



KODAK

no. 1120

KODAKS *and* Kodak Supplies



1920

EASTMAN KODAK COMPANY

ROCHESTER, NEW YORK

"The Kodak City"



ENLARGEMENT FROM A NEGATIVE MADE WITH THE VEST POCKET KODAK
AND THE KODAK PORTRAIT ATTACHMENT

THE KODAK SYSTEM

TO the amateur photographer "Kodak" means more than the mere trade-mark on a camera. It stands for the whole simple and efficient system of photography worked out for him by the Eastman Kodak Company.

The Kodak camera and its name came into being in 1888. For several years before that the company, already important manufacturers of photographic goods for the professional trade, had made progress toward the simplifying of picture-making. Its history since that date has been, in reality, the history of the growth and development of the whole broad field of photography.

It is best known to the public for its activities in the amateur field. But its progress along other lines has been equally notable. It was Kodak film that made the motion picture possible. In the production of plates and papers and studio apparatus, it is a leader in serving the professional photographer; its lenses and aerial cameras helped our birdmen in the penetration of German camouflage; its X-Ray plates and films are lending their aid to physicians and surgeons the world over, and its chemical laboratories have re-found many of the secrets that were supposed to be hopelessly hidden beyond the Rhine.

And in all these phases of photography there is an interlocking of ideas and knowledge. The improvement made in one field almost invariably suggests new possibilities, further advancement in some other direction. The very breadth of the business makes possible an expenditure in Research Laboratories and in the employment of technical experts that enables us to develop new ideas and to make constant progress in the perfection of goods and processes, a progress not possible to a concern working in a narrower groove.

Good pictures depend upon a number of things.

A good camera or a good lens or shutter can none of them alone be responsible for success in picture-making. Each detail must not only be right of itself, but must be in harmony with every other detail—which fact accounts for the success of the Kodak system. When we put a lens on a camera we use with it a shutter that is so made as to give the best results with that lens ; Kodak film is made with just the proper degree of contrast and speed and orthochromatism to give the best results in photographing under the conditions of lighting that the amateur ordinarily encounters ; Velox paper is made to give the best results from the kind of negative that is produced on film under such conditions. The very formulas for the development of films and papers are made to meet these conditions. They are worked out by men who know not merely the action of these chemicals, but know intimately the goods they are to be used with.

And so, in working out the daylight loading Kodak, and the Kodak Film Tank method of development, in giving greater speed to a film—in every advancement, in the consideration of every new idea—it is the Kodak practice to adopt only those changes that mean a further perfecting of the Kodak system, mean better pictures or a simpler way of getting equally good pictures.

And then there is the amateur himself to be considered. Some, there are, who want the simplest of cameras, who care only for jolly vacation snap-shots made on bright days, and finished for them by the dealer, while others take delight in running the whole gamut of photography. No picture is too difficult for them to undertake. For them there are as great delights in the developing and printing as in the picture-taking. They learn to know and use color filters ; they not only make prints but tone them. They find joy in the making of enlargements ; they revel in lantern slides, and are on familiar terms with reducers and intensifiers, and make a study of artistic composition.

For all of these the Kodak system goes all the way. With each camera there is a little book that tells, in simple terms, just how to operate that camera, how to make outdoor pictures and indoor pictures, including flash-lights. For every further step in amateur photography there's a helpful booklet, free for the asking.

Then there is our little illustrated magazine, *Kodakery*, edited from the beginner's standpoint, that goes free for one year to every purchaser of a Kodak or Brownie, who fills out and mails to us the blank that is bound into the instruction book which accompanies each camera.

Nor do we stop even with the distribution of our magazine and our practical monographs on photographic subjects. There is, here at Rochester, a staff of correspondents, each with a broad knowledge of photography and each in intimate touch with our experts in every department of photography, ready to answer promptly and clearly any photographic question that may be asked.

The Kodak Company is no longer a mere "manufacturing enterprise." Through the breadth of its world-wide activities and its research, it has become an institution. And as such it recognizes an obligation. Its aim is not merely to construct lenses and build cameras and manufacture films and papers and plates, but also to widen the knowledge of photography so that the art may mean more to all the world.

EASTMAN KODAK COMPANY

ROCHESTER, NEW YORK
"The Kodak City"

KODAK LENSES

WHETHER it is a single lens, a rapid rectilinear or an anastigmat, no lens that is not the best of its particular type is adopted for use on a Kodak or Brownie camera. Any of these lenses, when used with the shutter that it is adapted to use with, and in every case this detail of manufacture is looked after most carefully, will produce good results under all normal conditions of light.

In the Kodak Anastigmats we have a type of lens that is made with particular reference to hand camera requirements. The earlier anastigmats were made to serve a dual purpose. Their owners usually were enthusiasts who had several cameras for pictures of various sizes, and it was customary to shift the lenses from one camera to another. The lens that worked, for instance, at $f. 6.3$, on a 4×5 , was frequently needed to use as a wide angle lens on a 5×7 , and when stopped down to $f. 16$ would do the work admirably.

Realizing that the Kodaker would not, once in a hundred times, care to use a lens on any camera except that to which it was originally fitted (or one of the same size), we set to work to make a one-purpose lens that would meet his specific requirements. The result was the Kodak Anastigmat. It is not adaptable to use as a wide angle lens—but, on the size of film for which it is listed, and at its advertised speed (aperture), it has no superior.

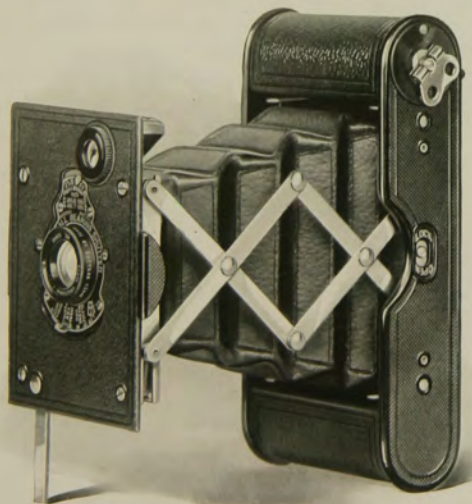
The Kodak Anastigmats $f. 7.7$ are speedier than the fastest rectilinear lenses, and at least equal the best anastigmats in depth, sharpness and flatness of field. The Kodak Anastigmat $f. 6.3$ has the same high quality and has nearly 50 per cent greater speed than the $f. 7.7$.

It is made for a purpose and fits that purpose. The Kodak Anastigmat has not the wide interchangeability that some of the older anastigmats have, but for Kodak use, you cannot obtain a better lens at any price.

VEST POCKET *Autographic* KODAK

THE Vest Pocket Kodak has become a requirement of one's personal wardrobe. It fits snugly into the seclusion of a man's pocket or a woman's hand-bag, like a watch or a fountain pen, out of sight, forgotten until wanted. Its ability is no less than its modesty.

Its operation is simple. Opening with one movement to a fixed focus, it is instantly ready for service. And with its autographic feature, it is a veritable vest pocket notebook, adding to the photographic record, the memorandum record of all that goes to make every good time a lasting pleasure. It fits into the day and the place unobtrusively, and though made almost entirely of metal to



stand the knocks and bangs, is so light in weight and compact as to make it convenient to carry at any time. There's always an added pleasure and an advantage in the possession of this little instrument.

The Vest Pocket Autographic Kodak is fitted with No. 0 Kodak Ball Bearing shutter, working without jerk or jar, at speeds of $\frac{1}{25}$ and $\frac{1}{30}$ of a second, as well as the time and "bulb" actions. Also fitted with Kodak Autotime Scale to aid in giving the correct exposure.

It makes pictures $1\frac{5}{8} \times 2\frac{1}{2}$ inches, loading in daylight with eight-exposure Autographic Film Cartridges (No. A127). The Vest Pocket (\$9.49 model) is supplied with tested meniscus achromatic lens, and the \$10.58 model, with carefully tested Rapid Rectilinear lens, both producing excellent pictures under all ordinary conditions.

The three Anastigmat equipments for the Vest Pocket, *Special*, are as perfect as can be found on any fixed focus hand camera. The Kodak Anastigmat, *f. 7.7* lens, offers the usual advantages of an anastigmat, so far as sharpness, definition and freedom from astigmatism are concerned. The Kodak Anastigmat and Bausch & Lomb Kodak Anastigmat, *f. 6.9* lenses, give, in addition to these same advantages, an increased lens speed.

The Vest Pocket Kodak has an all-metal body with figured black enamel finish for the regular model, while the *Special* is covered with finest pin grain Morocco leather.



VEST POCKET KODAK
(Regular Model)
ACTUAL SIZE

DETAILS

For rectangular pictures, $1\frac{5}{8} \times 2\frac{1}{2}$ inches. Capacity, 8 exposures without reloading. Size of Kodak, $1 \times 2\frac{3}{8} \times 4\frac{3}{4}$ inches. Weight, 9 ounces. Lens, regular model, meniscus achromatic; or Rapid Rectilinear, $3\frac{1}{2}$ -inch focus; for *Special*, Kodak Anastigmat, *f.* 7.7, $3\frac{1}{2}$ -inch focus; Kodak Anastigmat, *f.* 6.9, $3\frac{1}{2}$ -inch focus; or Bausch & Lomb Kodak Anastigmat, *f.* 6.9, $3\frac{1}{4}$ -inch focus. Shutter, Kodak Ball Bearing No. 0. Brilliant reversible finder. All metal body, *Special* covered with pin grain Morocco; nickel and black enamel finish and black bellows.

PRICES

Vest Pocket Autographic Kodak (regular model), meniscus achromatic lens and Kodak Ball Bearing shutter	\$9.49
Ditto, with Rapid Rectilinear lens, speed U. S. 8	10.58
Vest Pocket Autographic Kodak, <i>Special</i> , Kodak Anastigmat lens, <i>f.</i> 7.7, and Kodak Ball Bearing shutter	\$16.58
Ditto, with Kodak Anastigmat, <i>f.</i> 6.9 lens	22.58
Ditto, with Bausch & Lomb Kodak Anastigmat, <i>f.</i> 6.9 lens	36.98
Leather Case for V. P. Kodak	1.00
Soft Leather Carrying Bag	2.25
Grain Leather Case	1.75
Belt Carrying Case (russet leather)	1.75
Khaki Belt Carrying Case	1.15
Vest Pocket Cable Release Attachment50
Vest Pocket Kodak Tripod Adapter. (See page 57)50
Autographic Film Cartridge, 8 exposures, $1\frac{5}{8} \times 2\frac{1}{2}$ (No. A 127)25
Kodak Portrait Attachment. (See page 39)75



SHOWING
VEST POCKET
CABLE RELEASE
ATTACHMENT
IN USE

The prices of cameras and film include the Excise War Tax

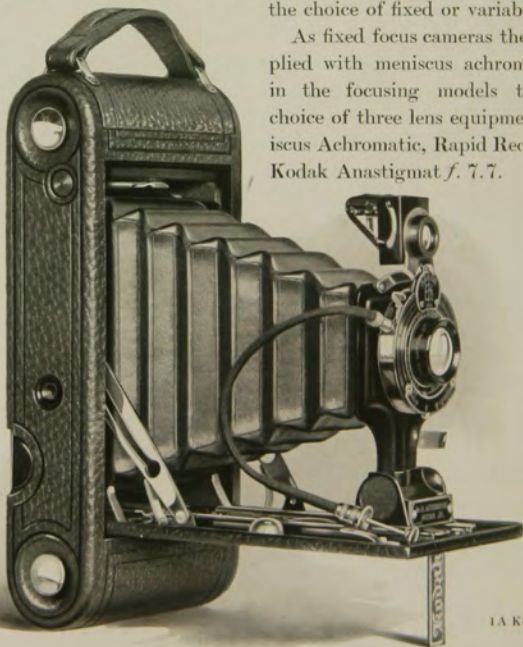
Nos. 1 AND 1A

Autographic KODAK JUNIORS

THE Kodak Juniors have made a permanent place for themselves. Moderate in price they, at the same time, have all the essentials to good picture making, are compact, well made and have the Auto-graphic feature.

The No. 1 and No. 1A Juniors are well finished, small enough to be carried in a coat pocket, dependable in use, and they offer the choice of fixed or variable focus.

As fixed focus cameras they are supplied with meniscus achromatic lens; in the focusing models there is a choice of three lens equipments: Meniscus Achromatic, Rapid Rectilinear or Kodak Anastigmat *f. 7.7*.



1A KODAK, JR.

Both the 1 and 1A models are fitted with the Kodak Ball Bearing shutter and cable release; the No. 1 having speeds of $\frac{1}{25}$ and $\frac{1}{50}$ of a second, except when supplied with *f.* 7.7 lens, in which case it has the same shutter that is supplied with the No. 1A, with speeds of $\frac{1}{25}$, $\frac{1}{50}$ and $\frac{1}{100}$ of a second.

The No. 1 Junior makes $2\frac{1}{4} \times 3\frac{1}{4}$ pictures, while the No. 1A makes pictures $2\frac{1}{2} \times 4\frac{1}{4}$ inches, these being the only differences in the two cameras. Both are equipped with the autographic feature for the recording of dates and titles on the film, are well made in every respect and covered with a good quality of grain leather.

DETAILS

For rectangular pictures, No. 1, $2\frac{1}{4} \times 3\frac{1}{4}$ inches; No. 1A, $2\frac{1}{2} \times 4\frac{1}{4}$ inches. Capacity, No. 1, 6 exposures; No. 1A, 12 exposures without reloading. Size of Kodak, No. 1, $1\frac{7}{8} \times 3\frac{5}{8} \times 6\frac{5}{8}$ inches; No. 1A, $1\frac{5}{8} \times 3\frac{3}{4} \times 8$ inches. Weight, No. 1, 23 ounces; No. 1A, 28 ounces. Lenses, No. 1: meniscus achromatic, Rapid Rectilinear, $\frac{4}{4}$ -inch focus; or Kodak Anastigmat, *f.* 7.7, 4-inch focus. No. 1A: meniscus achromatic; Rapid Rectilinear, $\frac{5}{4}$ -inch focus; or Kodak Anastigmat, *f.* 7.7, $\frac{5}{4}$ -inch focus. Shutter, Kodak Ball Bearing with cable release. (See page 36.) Brilliant, reversible, collapsible finders.

PRICES

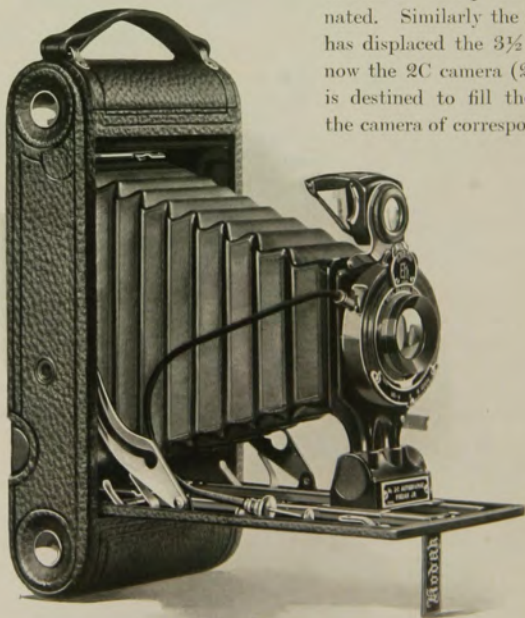
	No. 1	No. 1A
Autographic Kodak Junior (fixed focus) meniscus achromatic lens and Kodak Ball Bearing shutter	\$16.67	\$18.30
Autographic Kodak Junior (focusing model, with scale), meniscus achromatic lens and Kodak Ball Bearing shutter	16.67	18.30
Ditto, with Rapid Rectilinear lens	19.26	20.96
Ditto, with Kodak Anastigmat lens, <i>f.</i> 7.7	24.16	26.59
Belt Carrying Case (russet leather)	4.00	
Black Sole Leather Case, with strap	4.50	4.50
Soft Leather Bag, with strap	3.50	3.75
Leatherette Carrying Case, with strap	3.00	3.00
Autographic Film Cartridge, 12 exposures (No. A 116) for No. 1A60
Ditto, 6 exposures (No. A 120) for No. 1; (No. A 116) for No. 1A25	.30
Kodak Portrait Attachment. (See page 39)75	.75

The prices of cameras and film include the Excise War Tax

No. 2C *Autographic* KODAK JUNIOR

IN the earlier days of hand cameras the pictures were all of them either round or square or nearly square. The popular sizes were $3\frac{1}{2} \times 3\frac{1}{2}$, $3\frac{1}{4} \times 4\frac{1}{4}$ and 4×5 . Some years ago we realized that these shapes were not desirable, that nearly all pictures needed trimming and that meant a waste of film and paper. So we introduced the $3\frac{1}{4} \times 5\frac{1}{2}$ Kodak (post-card size) with the result that the 4×5

camera has been practically eliminated. Similarly the $2\frac{1}{2} \times 4\frac{1}{4}$ has displaced the $3\frac{1}{2} \times 3\frac{1}{2}$ and now the 2C camera ($2\frac{7}{8} \times 4\frac{7}{8}$) is destined to fill the niche of the camera of corresponding size,



$3\frac{1}{4} \times 4\frac{1}{4}$, because it gives *more picture for the area of film* and is especially convenient to carry.

The camera loads in daylight with ten or six exposure Auto-graphic Film Cartridges, permitting the recording of date and title, or any data that one may desire on the negative. Though regularly supplied with meniscus achromatic lens, the camera, if desired, will be fitted with either Rapid Rectilinear or Kodak Anastigmat, *f. 7.7* lens, the latter giving the advantages of a fine anastigmat equipment at a low price.

The shutter is the Kodak Ball Bearing with cable release, working at speeds of $\frac{1}{25}$, $\frac{1}{50}$ and $\frac{1}{100}$ of a second, also for "bulb" and time exposures. The leaves of this shutter, opening in the shape of a star, admit the maximum of light for a given exposure.

It has automatic focusing lock, a finder of the new collapsible, reversible type, and two tripod sockets. The back and bed are of aluminum, covered with fine seal grain leather, black bellows, and metal parts in nickel and black enamel.

DETAILS

For rectangular pictures, $2\frac{7}{8} \times 4\frac{7}{8}$ inches. Capacity, 10 exposures without reloading. Size of Kodak, $1\frac{3}{4} \times 4\frac{3}{8} \times 8\frac{1}{4}$ inches. Weight, 33 ounces. Lens, meniscus achromatic. Also supplied with Rapid Rectilinear or Kodak Anastigmat, *f. 7.7* lens, $5\frac{1}{2}$ -inch focus, if desired. Shutter, Kodak Ball Bearing with cable release. (See page 36.) Brilliant, reversible, collapsible finder. Two tripod sockets. Black bellows.

PRICES

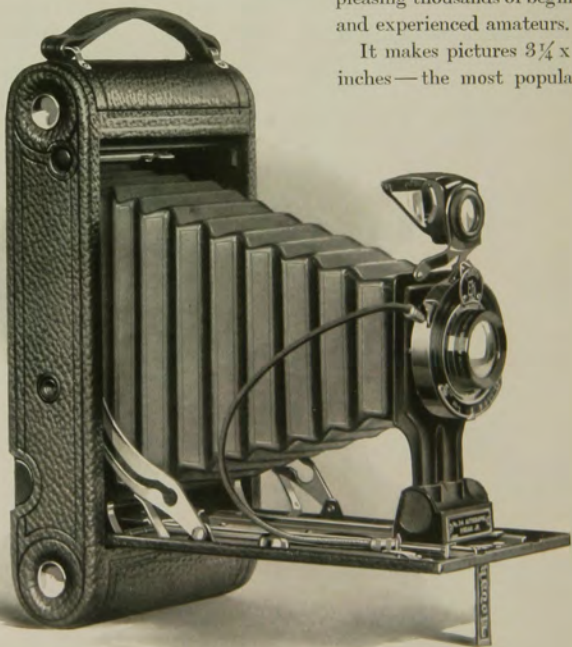
No. 2C Autographic Kodak Junior, with meniscus achromatic lens and Kodak Ball Bearing shutter	\$20.00
Ditto, with Rapid Rectilinear lens	22.91
Ditto, with Kodak Anastigmat, <i>f. 7.7</i> lens	28.22
Leatherette Carrying Case, with strap	3.25
Black Sole Leather Case, with strap	5.00
Soft Leather Carrying Bag, with strap	4.00
Autographic Film Cartridge, 10 exposures (No. A 130)75
Ditto, 6 exposures45
Kodak Portrait Attachment. (See page 39)75

The prices of cameras and film include the Excise War Tax

No. 3A *Autographic* KODAK JUNIOR

WHEN amateurs asked for a camera which would take pictures of the popular "post-card" size, with the qualities of the line of Junior Kodaks, it meant producing an instrument relatively thin and light, compact and simple, and an efficient mechanism. Though but little more than a year old, the new No. 3A Kodak Junior, is already pleasing thousands of beginners and experienced amateurs.

It makes pictures $3\frac{1}{4} \times 5\frac{1}{2}$ inches—the most popular of



amateur sizes, of the right proportion for almost any composition, whether in the vertical or horizontal position. It loads with Auto-graphic Film Cartridges of ten and six exposures, and of course has the autographic feature so that the dates and titles may be written on the films at the time of exposure.

The camera is regularly supplied with meniscus achromatic lens, but, if preferred, may be had with either Rapid Rectilinear, or Kodak Anastigmat, *f.* 7.7 lens, the latter a lens of our own manu-facture which has given excellent results.

The shutter used is the No. 2 Kodak Ball Bearing with both finger and cable release working automatically, at speeds of $\frac{1}{25}$, $\frac{1}{50}$ and $\frac{1}{100}$ of a second, also for "bulb" and time exposures.

The camera is carefully constructed throughout, the back and bed are of aluminum, covered with fine seal grain leather, the bellows of black and metal parts in nickel and black enamel. The finder is large and of the collapsible, reversible type.

DETAILS

For rectangular pictures, $3\frac{1}{4} \times 5\frac{1}{2}$ inches. Capacity, ten exposures without reloading. Size of Kodak, $1\frac{1}{8} \times 5\frac{1}{8} \times 9\frac{3}{4}$ inches. Weight, 35 ounces. Lenses, meniscus achromatic, Rapid Rectilinear, focus $6\frac{3}{4}$ inches, or, if desired, the Kodak Anastigmat, *f.* 7.7 lens, $6\frac{3}{4}$ -inch focus. Shutter, Kodak Ball Bearing No. 2, with cable release. Automatic focusing lock. Two tripod sockets. Brilliant, collapsible, reversible finder. Black bellows. Covering, seal grain leather.

PRICES

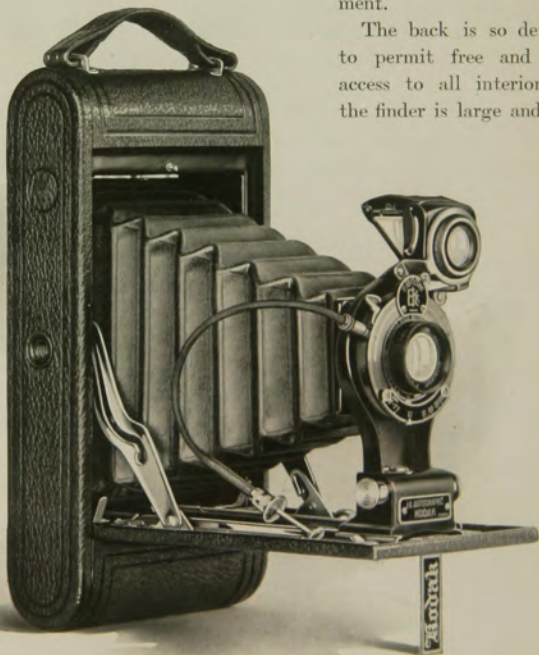
No. 3A Autographic Kodak Junior, with meniscus achromatic lens . . .	\$21.02
Ditto, with Rapid Rectilinear lens	24.64
Ditto, with Kodak Anastigmat lens, <i>f.</i> 7.7	30.62
Black Sole Leather Carrying Case, with strap	5.25
Soft Leather Carrying Bag	5.00
Leatherette Carrying Case, with strap	3.25
Autographic Film Cartridge, 10 exposures (No. A 122)90
Ditto, 6 exposures55
Kodak Portrait Attachment. (See page 39)75

The prices of cameras and film include the Excise War Tax

No. 1A *Autographic* KODAK

THE appearance of superiority which marks this camera is an indication of its photographic quality. It possesses that compactness which makes Kodaks desirable traveling companions. But it has also those mechanical refinements which the discriminating amateur expects in an efficient instrument.

The back is so devised as to permit free and instant access to all interior parts; the finder is large and of the



collapsible, reversible, skeleton type, which is easily accessible for cleaning.

The No. 1A makes $2\frac{1}{2} \times 4\frac{1}{4}$ pictures, a shape that is widely adaptable to either horizontal or vertical composition. It has the autographic feature for the recording of data on the film, and loads in daylight with twelve and six-exposure Autographic Film Cartridges.

Although regularly supplied with the best quality Rapid Rectilinear lens, it will be fitted, if desired, with Kodak Anastigmat lens, *f.* 7.7, giving the advantages of a fine anastigmat equipment at a low price. The shutter is the Kodak Ball Bearing, with cable release, working at speeds of $\frac{1}{25}$, $\frac{1}{50}$ and $\frac{1}{100}$ of a second, and time and "bulb" exposures.

It has an improved automatic focusing lock, two tripod sockets and bellows of black leather. The back is covered with fine seal grain leather, and metal parts are in nickel and black enamel.

DETAILS

For rectangular pictures, $2\frac{1}{2} \times 4\frac{1}{4}$ inches. Capacity, 12 exposures without reloading. Size of Kodak, $1\frac{5}{8} \times 3\frac{3}{4} \times 8$ inches. Weight, $27\frac{1}{2}$ ounces. Lens, double combination, Rapid Rectilinear, $5\frac{1}{4}$ -inch focus, or if desired, Kodak Anastigmat lens, *f.* 7.7, $5\frac{1}{4}$ -inch focus. Shutter, Kodak Ball Bearing with cable release. Automatic focusing lock. Two tripod sockets. Brilliant, collapsible, reversible finder. Black leather bellows.

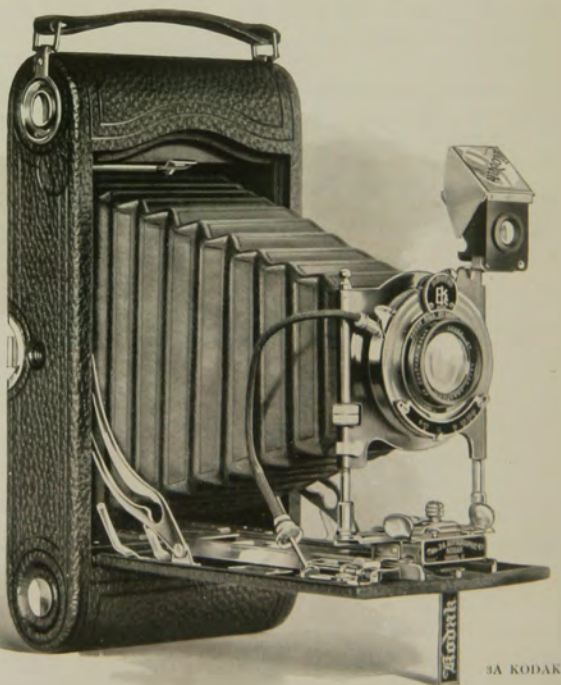
PRICES

No. 1A Autographic Kodak, with Rapid Rectilinear lens and Kodak Ball Bearing shutter	\$25.02
Ditto, with Kodak Anastigmat lens, <i>f.</i> 7.7	30.66
Black Sole Leather Case, with strap	4.50
Soft Leather Carrying Bag, with strap	3.75
Leatherette Carrying Case, with strap	3.00
Autographic Film Cartridge, 12 exposures (No. A 116)60
Ditto, 6 exposures30
Kodak Portrait Attachment. (See page 39)75

The prices of cameras and film include the Excise War Tax

Nos. 3 AND 3A *Autographic* KODAKS

SELDOM are so many advantages incorporated into one article as in the case of the 3A Kodak. It takes pictures of that most desirable size— $3\frac{1}{4} \times 5\frac{1}{2}$ inches—for either landscapes or portraits. It is a genuine hand camera, carried without inconvenience. Its appearance reflects quality. Design and equipment furnish every feature essential to the best results in general amateur photography. Literally no



3A KODAK

detail has been slighted or over-emphasized. The aim has been to produce a camera fulfilling every need of the advanced amateur.

In lens equipment, this camera is regularly supplied with the finest quality Rapid Rectilinear, with a speed of $f. 8$, or, if desired, the Kodak Anastigmat, $f. 7.7$ lens, offering the anastigmat advantages at a moderate price. Both the 3 and 3A will accommodate glass plates by the addition of a Combination Back. This back is interchangeable with the regular back, but it should be remembered that autographic records



SHOWING COMBINATION BACK

can be made only when the Autographic back is used, and not with Combination back or glass plates. The No. 3 Kodak is practically identical with the 3A, except in size and capacity. Both are made of aluminum and covered with best quality seal grain leather.

DETAILS

For rectangular pictures, No. 3, $3\frac{1}{4} \times 4\frac{1}{4}$ inches; No. 3A, $3\frac{1}{4} \times 5\frac{1}{2}$ inches. Capacity, No. 3, 12 exposures; No. 3A, 10 exposures without reloading. Size of Kodak, No. 3, $1\frac{1}{4} \times 4\frac{1}{2} \times 7\frac{1}{2}$ inches; No. 3A, $2 \times 4\frac{1}{4} \times 9\frac{1}{2}$ inches. Weight, No. 3, 23 ounces; No. 3A, 41 ounces. Lenses (regular equipment), Rapid Rectilinear, focal length for No. 3, $5\frac{1}{4}$ inches; No. 3A, $6\frac{3}{4}$ inches; or, if desired, Kodak Anastigmat, $f. 7.7$ lenses, focal length for No. 3, $5\frac{1}{4}$ inches; No. 3A, $6\frac{3}{4}$ inches. Shutters, Kodak Ball Bearing with cable release. Two tripod sockets. Black leather bellows. Brilliant, reversible finders with hoods. Rising and sliding fronts. Automatic focusing locks. No. 3A has double focusing scale for films or plates.

PRICES

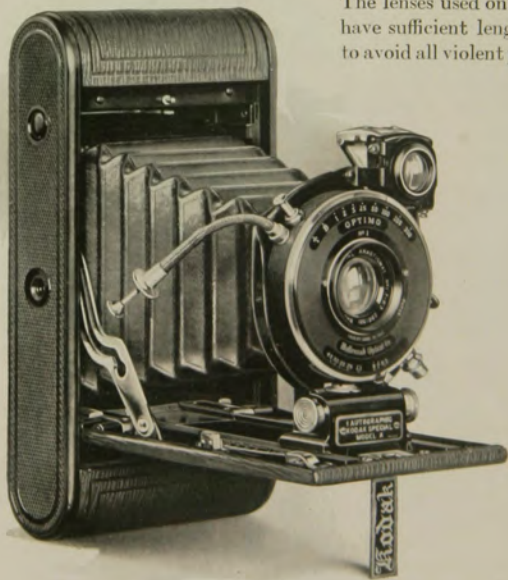
	No. 3 $3\frac{1}{4} \times 4\frac{1}{4}$	No. 3A $3\frac{1}{4} \times 5\frac{1}{2}$
Autographic Kodak, Rapid Rectilinear lens, Kodak Ball Bearing shutter	\$24.93	\$29.36
Ditto, with Kodak Anastigmat lens, $f. 7.7$	30.56	35.34
Black Sole Leather Case, with strap	4.50	5.25
Soft Leather Carrying Bag	4.00	5.00
Leatherette Carrying Case, with strap	3.00	3.25
Combination Back for plates	4.00	4.00
Double Glass Plate Holders, each	1.50	1.50
Autographic Film Cartridges, 12 exposures (No. A 118) for No. 3; 10 exposures (No. A 122) for No. 3A90	.90
Ditto, 6 exposures45	.55
Kodak Portrait Attachment. (See page 39)75	.75

The prices of cameras and film include the Excise War Tax

No. 1 *Autographic* KODAK, *Special*

HERE is a master camera. It is small but nevertheless capable, with an optical equipment offering a wide choice in lenses. And any of these lenses will give negatives of such sharpness that satisfactory enlargements can be made in any size.

The No. 1 Autographic Kodak, *Special*, illustrated here, takes pictures $2\frac{1}{4} \times 3\frac{1}{4}$ inches in size. Cameras smaller than this are made to take pictures this size but the size of a camera is largely governed by the length of focus and speed of its lens. We never sacrifice real efficiency to mere littleness, The lenses used on this camera have sufficient length of focus to avoid all violent perspective,



and at the same time the shutters are large enough to utilize the full speed at which the lenses are listed.

This little Kodak, like any fine piece of mechanism, works with smoothness and precision—a thoroughly capable instrument that is optically correct. The regular equipment is the Kodak Anastigmat lens, *f.* 6.3, and Optimo shutter, with cable release, highest speed $\frac{3}{320}$ of a second, and adjustable speeds to one second, in addition to the “bulb” and time actions. Four other high-grade lens equipments are also listed.

It is quickly opened and extended, the focusing scale is easily adjusted for all distances, by a simple lever attachment. It has a brilliant, collapsible, reversible finder with revolving mask for correct composition of pictures in both vertical and horizontal positions.

The camera is made of aluminum, is beautifully finished throughout and covered with the finest quality long grain calf; black leather bellows and highly nickeled trimmings.

DETAILS

For rectangular pictures, $2\frac{1}{4} \times 3\frac{1}{4}$ inches. Capacity, 6 exposures without reloading. Size of Kodak, $1\frac{1}{8} \times 3\frac{3}{8} \times 6\frac{5}{8}$ inches. Weight, 26½ ounces. Lens, Kodak Anastigmat, *f.* 6.3, $4\frac{1}{4}$ -inch focus. Shutter, Optimo with cable release. New brilliant, reversible, collapsible finder. Two tripod sockets and new lever focusing device.

PRICES

No. 1 Autographic Kodak, <i>Special</i> ,	
Kodak Anastigmat lens, <i>f.</i> 6.3,	
Optimo shutter	\$56.26
Ditto, with Bausch & Lomb No. 1	
Kodak Anastigmat lens, <i>f.</i> 6.3,	
$4\frac{1}{2}$ -inch focus	72.26
Ditto, with Bausch & Lomb No. 1	
Special, Anastigmat lens, <i>f.</i>	
6.3, $4\frac{1}{2}$ -inch focus	58.73
Ditto, with Bausch & Lomb	
No. 3 Tessar, Series IIb, <i>f.</i> 6.3,	
$4\frac{1}{2}$ -inch focus	88.26
Ditto, with Bausch & Lomb	
No. 12 Tessar, Series Ic, <i>f.</i> 4.5,	
$3\frac{1}{2}$ -inch focus	90.39
Long Grain Leather, Velvet Lined	
Case, with strap	5.00
Soft Leather Carrying Bag . .	3.50
Autographic Film Cartridge, 6	
exposures, $2\frac{1}{4} \times 3\frac{1}{4}$ (No. A 120) .	.25
Kodak Portrait Attachment. (See	
page 39)75

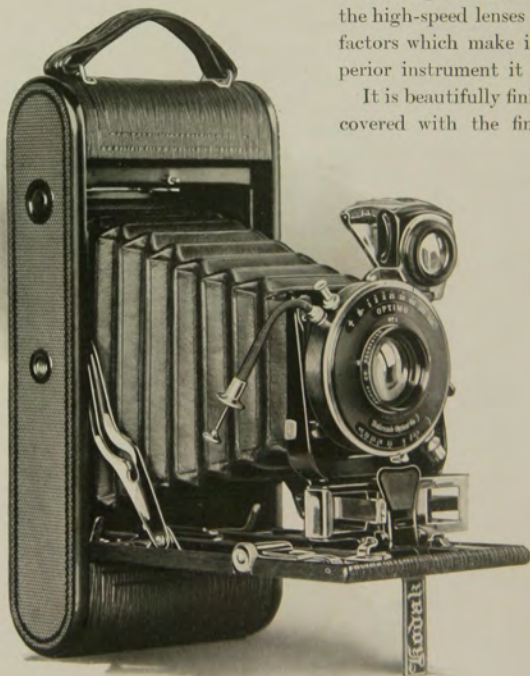
The prices of cameras and film include the Excise War Tax



No. 1A *Autographic* KODAK, *Special*

IN the No. 1A *Special*, beauty of form and of finish is joined with scientific efficiency in design and equipment. The Kodak Range Finder, the finest anastigmat lenses and a shutter-speed capable of working harmoniously with the high-speed lenses are three factors which make it the superior instrument it is.

It is beautifully finished and covered with the finest long



grain calf, and the best materials are used throughout in its construction. The body is made of aluminum.

High-speed lenses require accurate focusing, and the Kodak Range Finder does this simply, quickly, and efficiently.

The 1A *Special* offers a choice of the Kodak Anastigmat, *f.* 6.3 lens, and two other high-grade lenses, and is equipped with the Autographic feature. The shutter is the Optimo, operated either by cable or finger release, and in addition to the usual time and "bulb" actions, has eight adjustable speeds from one second to $\frac{1}{300}$ of a second.

The fast lenses give the *Specials* a great advantage over the ordinary camera in dull lights, and the high-speed shutters make them second only to cameras having focal plane shutters for photographing rapidly moving objects.

The camera has rising front; brilliant, collapsible, reversible finder with adjustable mask; rack and pinion for focusing, and the usual focusing scale, in addition to the Kodak Range Finder.

DETAILS

For rectangular pictures, $2\frac{1}{2} \times 4\frac{1}{4}$ inches. Capacity, 12 exposures without reloading. Size of Kodak, $1\frac{1}{8} \times 3\frac{3}{4} \times 8$ inches. Weight, 32 ounces. Lens, Kodak Anastigmat, *f.* 6.3, 5-inch focus. Shutter, Optimo. Two tripod sockets. Brilliant, reversible, collapsible finder with adjustable mask. Rack and pinion for focusing.

PRICES

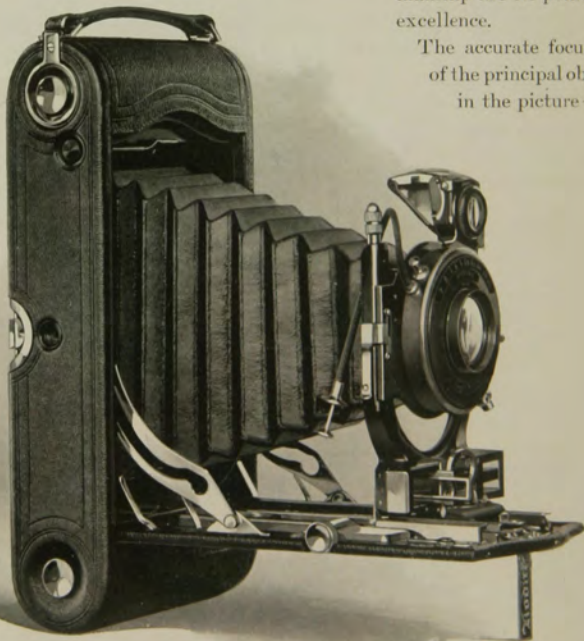
No. 1A Autographic Kodak, <i>Special</i> , with Kodak Anastigmat lens, <i>f.</i> 6.3, and Optimo shutter	\$66.87
Ditto, with Bausch & Lomb No. 2 Kodak Anastigmat, <i>f.</i> 6.3 lens, $5\frac{1}{4}$ -inch focus	84.47
Ditto, with Bausch & Lomb No. 4 Tessar, Series IIb Anastigmat lens, <i>f.</i> 6.3, $5\frac{1}{4}$ -inch focus	101.01
Grain Leather, Velvet Lined Case, with strap	6.00
Soft Leather Carrying Bag	3.75
Autographic Film Cartridge, 12 exposures (No. A 116)60
Ditto, 6 exposures30
Kodak Portrait Attachment. (See page 39)75

The prices of cameras and film include the Excise War Tax

Nos. 3 AND 3A *Autographic* KODAKS, *Special*

EVERY manufacturer produces one article in which he takes particular pride. Among Kodaks, this article is the 3A *Special*—a compound of three orders of skill—technical, artistic and mechanical. Examined as a unit or part by part, it represents the nearest approach to perfection in a hand camera. Optical efficiency, size of picture, condensed size of camera, selection of materials and skillful workmanship are its points of excellence.

The accurate focusing
of the principal object
in the picture—a



necessity in using high-speed lenses—is accomplished with extreme precision by the simple Kodak Range Finder.

All of the lenses listed with these Kodaks are large (fast) and the focal length is long in proportion to the size of the picture, thus avoiding violent perspective.

It offers a choice of the Kodak Anastigmat, *f.* 6.3 lens, and two other high-grade lenses. The shutter is the Optimo, operated either by cable or finger release, and has adjustable speeds from one second to $\frac{1}{300}$ of a second. The camera is made of aluminum, has rising front, and the usual focusing scale in addition to the Kodak Range Finder. It is richly finished in genuine Persian Morocco, has bellows of selected black leather, and metal parts are highly nickeled.

The No. 3 *Special* has the same lenses, shutter equipment and finish, but is not equipped with the Kodak Range Finder.

DETAILS

For rectangular pictures, No. 3, $3\frac{1}{4} \times 4\frac{1}{4}$ inches; No. 3A, $3\frac{1}{4} \times 5\frac{1}{2}$ inches. Capacity, No. 3, 12 exposures; No. 3A, 10 exposures without reloading. Size of Kodaks, No. 3, $1\frac{1}{8} \times 4\frac{1}{2} \times 8$ inches; No. 3A, $2 \times 4\frac{1}{4} \times 9\frac{1}{2}$ inches. Weight, No. 3, 32 ounces; No. 3A, 42 ounces. Lenses, Kodak Anastigmat, *f.* 6.3, focal length for No. 3, 5 inches; No. 3A, $6\frac{1}{4}$ inches. Shutters, Optimo with cable release. Two tripod sockets. Brilliant, collapsible, reversible view finders with adjustable window, also Kodak Range Finder for No. 3A. Brilliant, reversible finder with hood and spirit level for No. 3. Rack and pinion for focusing.

PRICES

	No. 3 $3\frac{1}{4} \times 4\frac{1}{4}$	No. 3A $3\frac{1}{4} \times 5\frac{1}{2}$
Autographic Kodak, <i>Special</i> , Kodak Anastigmat lens, <i>f.</i> 6.3, and Optimo shutter	\$61.49	\$75.94
Ditto, with Bausch & Lomb Kodak Anastigmat lens, <i>f.</i> 6.3, No. 2 with $5\frac{1}{4}$ -inch focus for No. 3; No. 4 with $6\frac{1}{4}$ -inch focus for No. 3A	79.09	103.14
Ditto, with Bausch & Lomb Tessar Series IIb Anastigmat lens, <i>f.</i> 6.3, No. 4 with $5\frac{1}{4}$ -inch focus for No. 3; No. 5K with $7\frac{1}{4}$ -inch focus for No. 3A	95.64	124.48
Grain Leather, Velvet Lined Case, with strap	6.00	6.75
Soft Leather Carrying Bag	4.00	5.00
Combination Back	4.50	5.00
Double Glass Plate Holders, each	1.50	1.50
Autographic Film Cartridge, 12 exposures (No. A 118) for No. 3; 10 exposures (No. A 122) for No. 3A90	.90
Ditto, 6 exposures45	.55
Kodak Portrait Attachment. (See page 39)75	.75

The prices of cameras and film include the Excise War Tax

STEREO KODAK

THERE is probably no branch of photography more fascinating than that afforded by the Stereo. Pictures which give the full effect of depth, roundness, distance and perspective can be obtained only by the use of twin lenses and when viewed through the stereoscope give the correct visual effect, just as we see with our eyes.

The Stereo Kodak is supplied with carefully matched Kodak Anastigmat, *f.* 7.7 lenses. Covered with fine seal grain leather; metal parts, nickel and black enamel.

DETAILS

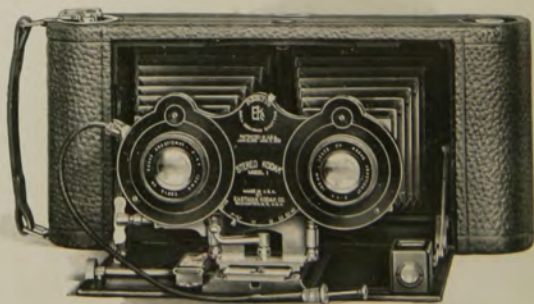
For $3\frac{1}{8} \times 3\frac{3}{8}$ Stereo pictures. Capacity, 6 exposures without reloading. Size of Kodak, $2\frac{7}{8} \times 4\frac{1}{4} \times 10\frac{1}{2}$ inches. Weight, $47\frac{1}{2}$ ounces. Lenses, Kodak Anastigmat, *f.* 7.7, $5\frac{1}{4}$ -inch focus. Shutter, Stereo No. 2 Ball Bearing, with cable release; speeds of $\frac{1}{25}$, $\frac{1}{50}$ and $\frac{1}{100}$, also "bulb" and time exposures. Finder, tripod socket, rising front, rack and pinion for focusing and black leather bellows.

PRICES

Stereo Kodak, Model No. 1, Kodak Anastigmat lenses, *f.* 7.7, and Stereo

Ball Bearing shutter	\$58.13
Black Sole Leather Carrying Case, with strap	6.75
N. C. Film Cartridge, 6 exposures, for Stereo (No. 101)70
Ditto, 3 exposures for Stereo35
Stereo Kodak Self-transposing printing frame	3.50
Kodak Portrait Attachment75

The prices of cameras and film include the Excise War Tax



PANORAM KODAK

TO portray an expanse of landscape in the form of a panorama is the accomplishment of this unique camera, the lens of which swings on its optical axis to cover the broad view. This camera may also be used advantageously to photograph a group of people when they are placed in a curve so that all are the same distance from the camera.

The Panorams are carefully made and have genuine leather coverings and nickeled fittings.

DETAILS

For rectangular pictures, No. 1, $2\frac{1}{4} \times 7$ inches; No. 4, $3\frac{1}{2} \times 12$ inches. Capacity, No. 1, 6 exposures; No. 4, 4 exposures without reloading. Size of Kodak, No. 1, $3\frac{3}{8} \times 4\frac{3}{8} \times 7\frac{3}{8}$ inches; No. 4, $4\frac{3}{4} \times 5\frac{3}{8} \times 10\frac{1}{8}$ inches. Weight, No. 1, 24 ounces; No. 4, 46 ounces. Lenses, specially selected as to quality and focal length. Shutter, Panoram. Two tripod sockets. Brilliant finder with hood. No. 1 uses No. 1 F. P. Kodak film cartridges; No. 4, B. E. Film Cartridges, No. 4. The lens of No. 1 swings in an arc of 112 degrees; of No. 4, 142 degrees.

PRICES

	No. 1	No. 4
Panoram Kodak	\$19.47	\$32.35
Black Sole Leather Carrying Case, with shoulder strap	6.75	10.50
N. C. Film Cartridge, No. 1, 6 exposures, $2\frac{1}{4} \times 7$ (No. 105); No. 4, 4 exposures, $3\frac{1}{2} \times 12$ (No. 103)50	.90
Ditto, 3 exposures25	

The prices of cameras and film include the Excise War Tax



THE BOX BROWNIES

THESE little cameras retain much of the skill of their forefathers—the highly efficient but bulky box cameras of the last century—without their inconvenient weight and size.

There is no bellows to be pulled out; they are light in weight; their mechanism is simplicity itself; they are not fragile; they do not have to be focused; and both cameras and pictures are inexpensive.

These qualities make them equally desirable for adults or children who want a low priced but practical and reliable camera.

Nos. 0 AND 2 BROWNIES

THE No. 0 Brownie makes the popular Vest Pocket size pictures, $1\frac{5}{8} \times 2\frac{1}{2}$ inches, and the No. 2, $2\frac{1}{4} \times 3\frac{1}{4}$ pictures. Both cameras are accurate, reliable, efficient and economical to operate and anybody can make good pictures with them from the start. They have the automatic shutter for snap-shots and time exposures; the No. 0 with



No. 2
BROWNIE

one stop and No. 2 with three stops. Each has carefully tested meniscus lens and view finders, for vertical and horizontal exposures.

DETAILS

Nos. 0 and 2 Brownies. For rectangular pictures, No. 0, $1\frac{1}{8} \times 2\frac{1}{2}$ inches; No. 2, $2\frac{1}{4} \times 3\frac{1}{4}$ inches. Capacity, No. 0, 8 exposures; No. 2, 6 exposures without reloading. Size of camera, No. 0, $2\frac{5}{8} \times 3\frac{3}{8} \times 4\frac{1}{8}$ inches; No. 2, $3\frac{1}{4} \times 4 \times 5\frac{5}{8}$ inches. Weight, No. 0, 8 ounces; No. 2, 13 ounces. Lenses, meniscus. Shutters, Eastman Rotary. Two finders.

Nos. 2A AND 3 BROWNIES

All the box Brownies are fixed focus and consequently anyone can, with reasonable care, make excellent pictures with them. The No. 2A makes pictures $2\frac{1}{2} \times 4\frac{1}{4}$ inches, while the No. 3 makes $3\frac{1}{4} \times 4\frac{1}{4}$ pictures. Each has carefully tested meniscus achromatic lens, Eastman Rotary shutter with three stops, two view finders, and the No. 3 is supplied with two tripod sockets. Both cameras are covered with durable imitation leather covering, with metal parts nickeled, and have the daylight-all-the-way feature of the Kodaks.



SHOWING
BROWNIE TRIPOD ADAPTER
AS USED ON NO. 0 BROWNIE

DETAILS

Nos. 2A and 3 Brownies. For rectangular pictures, No. 2A, $2\frac{1}{2} \times 4\frac{1}{4}$ inches; No. 3, $3\frac{1}{4} \times 4\frac{1}{4}$ inches. Capacity, 12 exposures without reloading. Size of camera, No. 2A, $3\frac{7}{8} \times 5\frac{1}{2} \times 6\frac{1}{8}$ inches; No. 3, $4\frac{3}{8} \times 5\frac{1}{8} \times 6\frac{1}{8}$ inches. Weight, No. 2A, 21 ounces; No. 3, 24 ounces. Lenses, meniscus achromatic. Shutters, Eastman Rotary with three stops. Two finders.

PRICES

	No. 0	No. 2	No. 2A	No. 3
Nos. 0 and 2 Brownie Cameras, meniscus lenses, Eastman Rotary shutters	\$2.86	\$3.33		
Nos. 2A and 3 Brownie Cameras, meniscus achro- matic lenses, Eastman Rotary shutters			\$4.58	\$5.90
Brownie Carrying Case (with strap, except No. 0)	1.15	1.50	1.70	1.80
Brownie Tripod Adapter25	.25	.25	
N. C. Film Cartridge, 8 exposures, $1\frac{1}{8} \times 2\frac{1}{2}$ (No. 127) for No. 025			
Ditto, 6 exposures, $2\frac{1}{4} \times 3\frac{1}{4}$ (No. 120) for No. 225		
Ditto, 12 exposures, $2\frac{1}{2} \times 4\frac{1}{4}$ (No. 116) for No. 2A; $3\frac{1}{4} \times 4\frac{1}{4}$ (No. 124) for No. 360	.90
Ditto, 6 exposures30	.45
Kodak Portrait Attachment. (See page 39)75	.75	.75	.75
Developing and Printing Outfit. (See page 44)	1.00	1.65	1.65	1.65

The prices of cameras and film include the Excise War Tax

No. 2C BROWNIE

THE shape of this camera makes it practically as easy to carry as a smaller box while the shape of the picture, measuring $2\frac{7}{8} \times 4\frac{7}{8}$ inches, is adapted to almost any composition. The size of the picture and the details of the camera have, together, made this one of the most popular Brownies. With moderate weight, a capacity of six or ten exposures and the Brownie stability, reliability and simplicity, it fits average needs at low cost.



DETAILS

For rectangular pictures, $2\frac{7}{8} \times 4\frac{7}{8}$ inches. Capacity, 10 exposures without reloading. Size of camera, $3\frac{3}{4} \times 6\frac{1}{4} \times 7\frac{1}{4}$ inches. Weight, 27 ounces. Lens, meniscus achromatic. Shutter, Eastman Rotary, with 3 stops. Two view finders. Two tripod sockets. Covered with durable imitation leather.

PRICES

No. 2C Brownie, with meniscus achromatic lens and Eastman Rotary shutter	\$5.97
Brownie Carrying Case, with strap	1.80
N. C. Film Cartridges, 10 exposures (No. 130)75
Ditto, 6 exposures45
Kodak Portrait Attachment. (See page 39)75

The prices of cameras and film include the Excise War Tax

No. 2 FOLDING *Autographic* BROWNIE

WITH fine imitation-leather covering its metal case, with black bellows and nickel and black enamel fittings, this little Brownie has an attractive exterior. Its construction is sound in every particular. It has the Autographic feature. It loads in daylight with Autographic Film Cartridges of six exposures. Fitted with meniscus achromatic or Rapid Rectilinear lens as desired. Has Kodak Ball Bearing shutter with variable snap-shot speeds of $\frac{1}{25}$ and $\frac{1}{50}$ of a second; also time and "bulb" actions, and is equipped with Kodak Autotime Scale. Has finger release only. Is made of metal, covered with a fine imitation leather, and carefully finished in every detail.

DETAILS

For rectangular pictures, $2\frac{1}{4} \times 3\frac{1}{4}$ inches. Capacity, 6 exposures without reloading. Size of camera, $1\frac{1}{4} \times 3\frac{1}{8} \times 6\frac{1}{2}$ inches. Weight, 19 ounces. Lens, meniscus achromatic. Also supplied with Rapid Rectilinear lens, $3\frac{3}{4}$ -inch focus, if desired. Shutter, Kodak Ball Bearing, equipped with Kodak Autotime Scale. Reversible finder, two tripod sockets, automatic focusing lock, black bellows.

PRICES

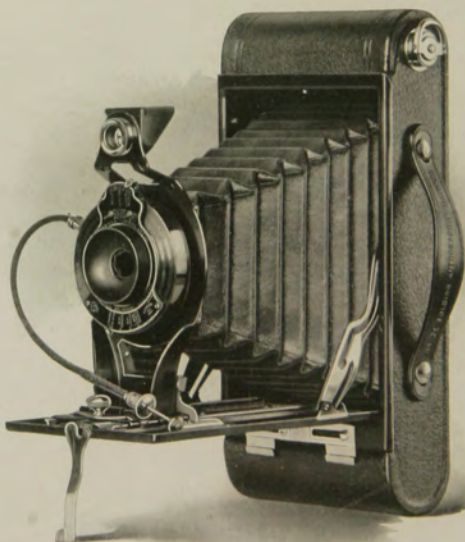
No. 2 Folding Autographic Brownie, meniscus achromatic lens and Kodak Ball Bearing shutter . . .	\$10.18
Ditto, with Rapid Rectilinear lens	11.97
Carrying Case for No. 2 Folding Autographic Brownie, with strap . .	1.70
Autographic Film Cartridge, 6 exposures, $2\frac{1}{4} \times 3\frac{1}{4}$ (No. A 120)25
Kodak Portrait Attachment. (See page 39)75

*The prices of cameras and film include
the Excise War Tax*



Nos. 2A AND 2C
FOLDING *Autographic* BROWNIES

LIKE the No. 2 Folding Brownie, the 2A and 2C possess the very useful Autographic equipment permitting one to record the date and title on the film at the time the exposure is made. The addition of this feature makes these focusing cameras highly efficient instruments, while retaining the simplicity which has always been associated



2C FOLDING
Autographic BROWNIE

with the Brownie name. The Kodak Autotime Scale attached to the Ball Bearing Shutter promotes ease of operation.

The 2A makes pictures $2\frac{1}{2} \times 4\frac{1}{4}$ inches, loading with twelve or six exposure Autographic Film Cartridges (No. A 116), while the No. 2C picture is $2\frac{7}{8} \times 4\frac{7}{8}$ inches, in cartridges of ten and six exposures (No. A 130).

The regular equipment includes, for either camera, a fine quality meniscus achromatic lens, or, if desired, the Rapid Rectilinear lens. The shutter is the Kodak Ball Bearing, automatic in action; the No. 2A supplied with finger release only, while the No. 2C has both finger and cable release. The snap-shot speeds however are the same for both cameras, $\frac{1}{25}$, $\frac{1}{30}$ and $\frac{1}{100}$ of a second in addition to the regular time and "bulb" actions.

Both cameras are made of metal covered with durable imitation leather; have black bellows; nickel and black enamel fittings; are small in size, neat in appearance, and thoroughly efficient.

DETAILS

For rectangular pictures, $2\frac{1}{2} \times 4\frac{1}{4}$ inches for the No. 2A, and $2\frac{7}{8} \times 4\frac{7}{8}$ inches for the No. 2C. Capacity, No. 2A, twelve exposures without reloading, and for the No. 2C, ten exposures. Size of cameras, No. 2A, $1\frac{7}{8} \times 3\frac{3}{8} \times 7\frac{7}{8}$ inches; No. 2C, $1\frac{3}{4} \times 3\frac{1}{4} \times 8\frac{1}{8}$ inches. Weight, No. 2A, 24 ounces; No. 2C, 25 ounces. Lenses, meniscus achromatic, or, if desired, the Rapid Rectilinear; focal length, No. 2A, 5 inches, No. 2C, $5\frac{1}{2}$ inches. Shutters, Kodak Ball Bearing, equipped with Autotime Scale. Reversible finders, two tripod sockets, automatic focusing locks, and black bellows.

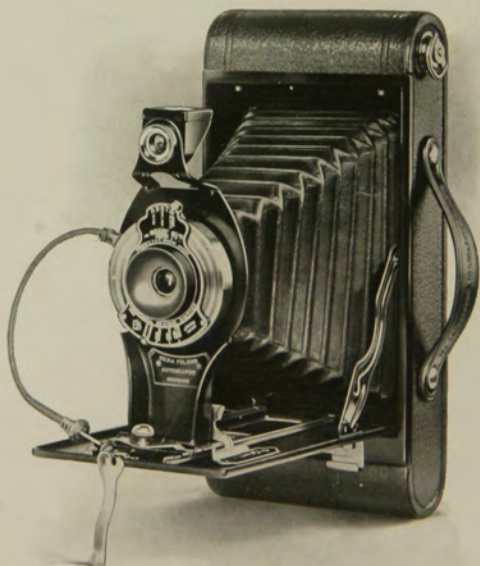
PRICES

	No. 2A $2\frac{1}{2} \times 4\frac{1}{4}$	No. 2C $2\frac{7}{8} \times 4\frac{7}{8}$
Folding Autographic Brownies, with meniscus achromatic lenses and Kodak Ball Bearing shutters	\$11.25	\$15.04
Ditto, with Rapid Rectilinear lenses	13.63	17.68
Carrying Case for Folding Autographic Brownies, with strap	1.80	1.90
Autographic Film Cartridges, 12 exposures, $2\frac{1}{2} \times 4\frac{1}{4}$ (No. A 116); 10 exposures, $2\frac{7}{8} \times 4\frac{7}{8}$ (No. A 130)60	.75
Ditto, 6 exposures30	.45
Kodak Portrait Attachment, (See page 39)75	.75

The prices of cameras and film include the Excise War Tax

No. 3A FOLDING *Autographic* BROWNIE

A MERE summary of the leading characteristics of this camera reveals the attention given to every detail, and a study of these features explains its popularity. Large enough to take pictures of the very popular post-card size ($3\frac{1}{4} \times 5\frac{1}{2}$ inches). Small enough to be carried without inconvenience. Equipped with the Kodak Autotime Scale, which suggests the proper opening to use; with



Brownie Ball Bearing Shutter for smooth working action; with reversible finder for both vertical and horizontal pictures; with the autographic feature to permit the recording of a date and a title on the negative after making each exposure. Made substantially of metal, for durability. Imitation leather covering of fine quality, round ends, black bellows and nickel and enamel fittings combine to produce a well finished appearance.

It has a fine quality meniscus achromatic lens, or if desired, will be equipped with Rapid Rectilinear lens. The shutter is equipped with cable release; has time and "bulb" actions and snapshot speeds of $\frac{1}{25}$, $\frac{1}{30}$ and $\frac{1}{100}$ of a second.

The camera loads in daylight with ten and six-exposure Autographic Film Cartridges (No. A 122); has an automatic focusing lock which permits the quick focusing of objects at any distance. Has two tripod sockets and carrying handle.

DETAILS

For rectangular pictures, $3\frac{1}{4} \times 5\frac{1}{2}$ inches. Capacity, 10 exposures without reloading. Size of camera, $1\frac{1}{8} \times 4\frac{5}{8} \times 9\frac{1}{8}$ inches. Weight, 38 ounces. Lens, meniscus achromatic. Also supplied with Rapid Rectilinear lens $6\frac{1}{4}$ -inch focus, if desired. Shutter, Kodak Ball Bearing with cable release, also equipped with Kodak Autotime Scale. Reversible finder, two tripod sockets, automatic focusing lock, black bellows.

PRICES

No. 3A Folding Autographic Brownie, meniscus achromatic lens and Kodak Ball Bearing shutter	\$17.02
Ditto, with Rapid Rectilinear lens	19.95
Carrying Case for No. 3A Folding Autographic Brownie, with strap	2.00
Autographic Film Cartridge, 10 exposures, $3\frac{1}{4} \times 5\frac{1}{2}$ (No. A 122)90
Ditto, 6 exposures55
Kodak Portrait Attachment. (See page 39)75

The prices of cameras and film include the Excise War Tax

KODAK BALL BEARING SHUTTER

THIS shutter is automatic in its action and does not require setting. Its leaves work on ball bearings, giving it a smooth and reliable action, and as they open and close in a star-shape aperture, the maximum of light is admitted. It is operated by cable release or finger release and has the iris diaphragm.



The No. 0 Ball Bearing shutter, as supplied with the Vest Pocket Kodak and No. 2 Folding Brownie, operates with finger release only, has speeds of $\frac{1}{25}$ and $\frac{1}{50}$ of a second and Autotime Scale. Fitted to the No. 1 Kodak Junior with meniscus achromatic and Rapid Rectilinear lenses, the No. 0 has cable release and not Autotime Scale.

The No. 1 shutter has variable indicated speeds of $\frac{1}{25}$, $\frac{1}{50}$ and $\frac{1}{100}$ of a second, and is regularly fitted to the No. 1A Kodak Junior, No. 2A Folding Brownie and Nos. 1A and 3 Kodaks, and with No. 1 Kodak Junior, when equipped with *f.* 7.7 lens.

The No. 2 shutter is fitted to Nos. 2C and 3A Kodak Juniors, No. 2C Folding Brownie and No. 3A Kodak. This has the same speeds as the No. 1 shutter but is larger. All have "bulb" and time actions.

OPTIMO SHUTTER

THE Optimo is one of the most accurate shutters for use with fast Anastigmat lenses. It has remarkable precision, smoothness, ease in action and sufficient speed to photograph rapidly moving objects. The Optimo is now supplied with all the *Specials*. In making an exposure, its five leaves revolve—opening and closing as well—in a star-shaped aperture. In addition to the usual "bulb" and time actions, the Optimo has eight indicated speeds varying from one second to $\frac{1}{300}$ of a second. This thoroughly reliable shutter is of the setting type; has cable and finger release, and is beautifully finished in nickel and black enamel, with the engraving in gold.



THE AUTOGRAPHIC FEATURE

EVERY negative worth the taking is worth a date and usually a further title. And it is a simple matter to make this record.

All Folding Kodaks (except the Stereo) and Folding Brownies have a little door in the back, covering a panel opening through which one may write on the red paper that protects the film. After the title is written on the red paper it is exposed for a few seconds to the light, and after development becomes a photographic part of the negative itself, such title appearing on the blank section between the exposures.

The record is as permanent as the negative itself.



THE KODAK RANGE FINDER

THE Kodak Range Finder gives you the correct focus to a hair, and with little trouble.



SHOWING POSITION OF RANGE FINDER
ON 3A Special

Open the Kodak, drawing out the standard to the limit of motion, and holding the Kodak in the horizontal position, look through (not at) the Range Finder at the three mirrors. Select some horizontal line near the center of the subject, and rack the lens back and forth until this line is continuous in the three mirrors. *When the line is continuous, the focus is correct.*

It is all very simple and certain.

The Kodak Range Finder is fitted to the 1A and 3A *Specials* only.

KODAK PORTRAIT ATTACHMENT



EVERYTHING has its limitations. Pocket cameras are not made to work close up to the subject. If they were so made they would have to have a long bellows draw, which would mean a long front board, or an extension to the front board, all of which would mean extra bulk, and they simply wouldn't be pocket cameras any more.

This is where the Kodak Portrait Attachment comes in. It so alters the focus of the lens that the camera can be placed close to the subject and a large *image*, in proportion to the size of the picture, secured (see frontispiece, page 2). It is invaluable on the hand camera—not merely for making portraits, but for photographing any small objects, such as flowers, or fruits.

The attachment is simply an extra lens, which fits over the barrel of the regular lens. This does not alter the exposure nor affect the operation of the instrument in any way, except to make the lens cut sharply when close to the subject, thereby giving a larger image.

Please order by number, or if required for older models or cameras with special equipments, specify shutter and size of camera.

KODAK SKY FILTERS AND COLOR FILTERS

THE Kodak Sky Filters and Color Filters are glass attachments mounted in the same manner as the Kodak Portrait Attachments.

The Sky Filter is intended to equalize the great difference of light between the sky and foreground in landscape photography. Only the upper half of the filter is stained a yellow color to relieve the brightness from the sky, while the lower half of the filter being colorless, permits a normal exposure for the foreground.

The Kodak Color Filters are of great value in outdoor photography, and for all subjects embracing colors which act weakly on the sensitive film, as they hold back the strong blue and violet rays, affording the weaker colors time to record.

KODAK PORTRAIT ATTACHMENTS, KODAK SKY FILTERS AND KODAK COLOR FILTERS

PRICES

Order by this Number		Portrait Attach- ments	Sky and Color Filters
FOR VEST POCKET AUTOGRAPHIC KODAKS			
No. 1.	For Regular Vest Pocket Kodak, with single lenses	\$0.75	\$0.75
No. 8.	For Regular Vest Pocket Kodak, with Rapid Rectilinear lens75	.75
No. 8.	For Special Vest Pocket Kodak, with Anastigmat lens75	.75

FOR AUTOGRAPHIC KODAKS, JUNIOR

No. 8.	For No. 1 Autographic Kodak Junior, with single or double lens .	.75	.75
No. 3.	For No. 1 Autographic Kodak Junior, with Kodak Anastigmat, f.7.7 lens75	1.15
No. 3.	For No. 1A Autographic Kodak Junior, with single lens, double lens or Kodak Anastigmat, f. 7.7 lens (without engraving on front of lens barrel)	.75	1.15
No. 13.	For No. 1A Autographic Kodak Junior, with Kodak Anastigmat f. 7.7 lens (with engraving on front of lens barrel)75	1.15
No. 5.	For No. 2C Autographic Kodak Junior, with single or double lens	.75	1.50
No. 7.	For No. 2C Autographic Kodak Junior, with Kodak Anastigmat, f.7.7 lens75	1.50
No. 5.	For No. 3A Autographic Kodak Junior, with single or double lens	.75	1.50
No. 7.	For No. 3A Autographic Kodak Junior, with Kodak Anastigmat, f. 7.7 lens75	1.50

FOR AUTOGRAPHIC KODAKS

No. 3.	For No. 1A Autographic Kodak, with double lens75	1.15
No. 13.	For No. 1A Autographic Kodak, with Kodak Anastigmat, f. 7.7 lens	.75	1.15
No. 3.	For No. 3 Autographic Kodak, with double lens75	1.15
No. 13.	For No. 3 Autographic Kodak, with Kodak Anastigmat, f. 7.7 lens	.75	1.15
No. 9.	For No. 3 Autographic Kodak, with Kodak Automatic shutter .	.75	.75
No. 5.	For No. 3A Autographic Kodak, with double lens75	1.50
No. 7.	For No. 3A Autographic Kodak, with Kodak Anastigmat, f. 7.7 lens	.75	1.50

FOR AUTOGRAPHIC KODAKS, SPECIAL

No. 6.	For No. 1 Autographic Kodak, <i>Special</i> , with any listed lens75	1.15
No. 6.	For No. 1A Autographic Kodak, <i>Special</i> , with any listed lens . .	.75	1.15
No. 6.	For No. 3 Autographic Kodak, <i>Special</i> , with any listed lens75	1.15
No. 7.	For No. 3A Autographic Kodak, <i>Special</i> with any listed lens75	1.50

FOR BOX BROWNIES

No. 1.	For No. 0 Box Brownie, with single lens75	.75
No. 1.	For No. 2 Box Brownie, with single lens75	.75
No. 2.	For No. 2A Box Brownie, with single lens75	.75
No. 4.	For No. 2C Box Brownie, with single lens75	1.15
No. 4.	For No. 3 Box Brownie, with single lens75	1.15

FOR FOLDING AUTOGRAPHIC BROWNIES

No. 8.	For No. 2 Folding Autographic Brownie, with single or double lens	.75	.75
No. 3.	For No. 2A Folding Autographic Brownie, with single or double lens	.75	1.15
No. 5.	For No. 2C Folding Autographic Brownie, with single or double lens	.75	1.50
No. 5.	For No. 3A Folding Autographic Brownie, with single or double lens	.75	1.50

KODAK FILM TANK

ANYBODY can get as correctly developed negatives by developing films in the Kodak Film Tank as an expert can by any known method of development. All that is necessary is to use the developer recommended for use in the tank, and develop for the length of time the tank instructions require for the temperature at which the developer is used. And experience has demonstrated that the tank method gets the utmost out of correctly exposed, under-exposed and over-exposed negatives.

It requires experience to know when to stop development by the tray method, but with the tank it is not a matter of guess-work, for the experience is in the tank. By consulting the table of temperatures you will know how long your film should be developed. But one of the greatest advantages of the tank is that it may be used in broad daylight, eliminating the dark room entirely.

The Kodak Film Tank consists of a winding box, a light-proof apron, and a heavily nickeled brass solution cup with cover. In the Brownie Film Tank, however, no cover is necessary as the film roll itself is turned. All articles pack in the box, making entire outfit self-contained.

The film to be developed is placed upon a reel in the winding box, the cover is placed on the box and the film is wound around an axis in



combination with the apron, in such fashion that, when completely wound, the apron protects the film effectually from light, and may be removed from the winding box safely at any time. It is then lowered into the cup of developer, the cover attached and the film left to develop for about twenty minutes. After development the film is removed for fixing.

Especial attention is called to the 3½-inch size, for the development of the 2C size films.

Those who wish to develop more than one roll at a time can do so without purchasing extra tanks complete, by securing duplicating outfits as listed below.

PRICES

Brownie Kodak Film Tank, for use with No. 1, No. 2 and No. 2	
Folding Pocket Brownie cartridges, complete	\$4.00
Cover for same25
Spool Adapter, for Vest Pocket Kodak Film10
Vest Pocket Kodak Film Tank, for use with all Kodak or Brownie cartridges, complete	3.50
2½-inch Kodak Film Tank, for use with all Kodak or Brownie cartridges having a film width 2½ inches or less, complete	5.00
3½-inch Kodak Film Tank, for use with all Kodak and Brownie cartridges having a film width of 3½ inches or less, complete	6.00
5-inch Kodak Film Tank, for use with all Kodak and Brownie cartridges having a film width of 5 inches or less, complete	7.00
7-inch Kodak Film Tank, for use with No. 5 Cartridge Kodak or shorter film cartridges, complete	8.50
Duplicating Outfit, consisting of one solution cup, one transferring reel, and one apron, for Brownie Kodak Film Tank	1.75
Ditto, for Vest Pocket Film Tank	1.75
Ditto, for 2½-inch Kodak Film Tank	2.50
Ditto, for 3½-inch Kodak Film Tank	3.00
Ditto, for 5-inch Kodak Film Tank	3.50
Ditto, for 7-inch Kodak Film Tank	4.25
Flexible Rubber Tray, for 3½-inch Kodak Film Tank	2.50
Kodak Tank Developer Powders for Brownie Kodak Film Tank, per package, ½ dozen15
Ditto, for Vest Pocket Tank15
Ditto, for 2½-inch tank, per package, ½ dozen20
Ditto, for 3½-inch tank, per package, ½ dozen20
Ditto, for 5-inch tank, per package, ½ dozen25
Ditto, for 7-inch tank, per package, ½ dozen25
Kodak Acid Fixing Powder, per ¼-pound package10
Ditto, per ½-pound package15
Ditto, per 1-pound package25

No. 2 BROWNIE DEVELOPING BOX

THE Brownie Developing Box is a simplified and modified form of the Kodak Film Tank, offering the same assurance of perfectly developed film, and at the same time is so simple that any boy or girl can readily understand and operate it.

It consists of a metal box with cover, just long enough to accommodate a roll of Nos. 117, 120 or 127 N. C. Film in one loop.

To develop, the roll of film is inserted in the spool carrier, and by means of a cord and winding shaft the film is unrolled and carried around a roller bearing, thus exposing the film to the action of the developer.

Before unrolling the film, the developer is poured in the box and the cover put in place; all these operations being performed in daylight. The film is then unrolled by turning the crank, when the box is rocked on its standard for six minutes. The developer is then poured off and box filled with water to wash out developer, after which film is removed and fixed in daylight.

It provides an excellent means for those who have Nos. 0, 1 or 2 Brownie Cameras, of developing their films simply and accurately.

PRICES

No. 2 Brownie Developing Box	\$2.00
Brownie Developing Box Powders, per package of 615
Kodak Acid Fixing Powders, $\frac{1}{2}$ -pound package15
Ditto, $\frac{1}{4}$ -pound package10



EASTMAN PLATE TANK



WHAT the film tank has done for films, the plate tank does for plates. The idea of the two tanks is based upon the same time and temperature system of development, with of course such differences in actual construction of the tanks as are required by the physical differences between films and plates. And as plates must be unloaded in a dark room, the plate tank cannot offer the advantage of daylight quite all the way but it takes only a few moments in the dark room to load this tank, after which it may be brought out into any light for development.

The device consists of a metal solution cup with cover, a cage for holding twelve or less plates, and a loading fixture for loading the plates in the cage.

The exposed plates are loaded into the cage and placed in the tank, which has been filled with developer, in the dark room and the tank cover fastened in place. On the front of the tank is a dial for registering time. Development is allowed to continue for fifteen minutes, the tank being reversed several times. After development, the developer is washed out of the plates, and the fixing and washing are done in the usual manner.

PRICES

Eastman Plate Tank, for 4 x 5, 3¼ x 5½, and smaller plates, includes solution cup, plate cage, loading fixture and adjustable kit	\$4.00
Ditto, 5 x 7, without kit	6.00
Adjustable Kit, for 4 x 5 or 3¼ x 5½ tank, to take smaller plates60
Separate Kits, for 5 x 7 tank, to take 3¼ x 5½, 4¼ x 6½ or 4¾ x 6½ plates, each	1.00
Metal Insert, for 5 x 7 tank, to take 4 x 5 plates25
Eastman Plate Tank Developer Powders, for 4 x 5 tank, per package, ½ dozen20
Ditto, for 5 x 7 tank, per package, ½ dozen40
Kodak Acid Fixing Powder, per 1-pound package25
Ditto, per ½-pound package15

DEVELOPING AND PRINTING OUTFITS

FOR those who wish to develop by the dark room method we offer complete developing and printing outfits containing everything necessary for the work. By combining a variety of different articles and making up the outfits in large quantities, we furnish them at a much lower price than if the articles were purchased separately. The Eastman 3A Outfit contains every requisite for finishing twenty-four $3\frac{1}{4} \times 5\frac{1}{2}$ or smaller pictures, and includes the following:

One Kodak Candle Lamp	\$0.35
One Printing Frame35
One Glass for Frame05
One 4-ounce Graduate20
One Stirring Rod05
Four Developing Trays40
Five tubes Eastman Special Developer25
One-half pound Kodak Acid Fixing Powder15
One package Potassium Bromide10
Two dozen $3\frac{1}{4} \times 5\frac{1}{2}$ Velox Paper40
Two ounces Nepera Solution for developing Velox10
Instruction Book (free)	

EASTMAN 3A OUTFIT, COMPLETE, NEATLY PACKED, \$1.65

\$2.40

EASTMAN A B C OUTFIT, similar to above but providing for 4 x 5 or smaller pictures

\$1.65

No. 0 BROWNIE Developing and Printing Outfit, complete, for developing and printing twenty-four pictures $1\frac{1}{8} \times 2\frac{1}{2}$. Price, complete . . .

1.00



KODAK AMATEUR PRINTER

THE Printer consists of a box with a removable top, in which there is a glass window through which the printing is done. Prints may be made with white margins, any size from $1\frac{5}{8} \times 2\frac{1}{2}$ to $4 \times 5\frac{1}{2}$ inches, by a simple automatic masking device, which holds the negatives firmly until released. Within the box is a small red electric bulb to permit the adjustment of negative and paper, and provision is made for a 60 Watt Mazda lamp, which is automatically turned on when the hinged frame is closed to make the exposure.

In the side of the box is a removable window, covered with orange fabric which serves as a dark-room lamp when developing-out or bromide papers are being used.

The printer is supplied complete, without lamp, but including $5\frac{1}{2}$ feet of electric light cord and plug.

The Kodak Amateur Printer \$10.00



KODAK AUTO-MASK PRINTING FRAME

THE new Auto-mask is the most convenient and useful thing in printing frames that has yet been produced. It is adaptable to the printing of negatives of any amateur size, from 4 x 5, 3 1/4 x 5 1/2 and smaller, using the same simple masking device employed on the Kodak Amateur Printer. The negative is held firmly in place by the mask and is as readily released, when desired, by a slight pressure on the thumb lever.



Any number of uniformly masked prints may be made without changing the position of the negative, and if desired, prints may be so made that white space is left at the side or bottom for writing as, for example, with post-cards. The graduated scales attached to the stationary guides, aid in sizing and holding exact dimensions of mask openings.

Kodak Auto-mask Printing Frame \$1.50

MASKIT PRINTING FRAME



THE Kodak Maskit Printing Frame is designed to overcome the difficulty of the negative and mask slipping on the glass, and to secure prints with a uniform white margin. Both negative and mask are held firmly, thus obviating the necessity of gumming.

Kodak Maskit, 3 1/4 x 4 1/4, opens two-thirds . . .	\$0.55
Kodak Maskit, 3 1/4 x 5 1/2, opens two-thirds60
Kodak Maskit, 5 x 7, opens two-thirds70

KODAK SERIAL PRINTING FRAME, No. 2

THE Serial Printing Frame will be found a great convenience for printing from Vest Pocket Kodak and No. 0 Brownie negatives. After development, the film is left in a continuous strip (without cutting), and the frame is so designed as to permit the film to slide easily through the frame from exposure to exposure. The film and paper are firmly held during printing, by a tension spring.

Kodak Serial Printing Frame No. 2 for V. P. and No. 0 Brownie negatives \$0.50

EASTMAN AND BROWNIE PRINTING FRAMES

Eastman $3\frac{1}{2} \times 12$, for No. 4 Panoram		Ditto, for $2\frac{1}{2} \times 4\frac{1}{4}$, film negatives or	
Kodak, opens in three sections . . .	\$1.00	smaller . . .	\$0.35
Eastman $2\frac{1}{4} \times 7$, for No. 1 Panoram		Ditto, $3\frac{1}{4} \times 4\frac{1}{4}$, opens two-thirds,	
Kodak, opens in two sections55	each35
Brownie Printing Frame, No. 1, for		Ditto, $3\frac{1}{4} \times 5\frac{1}{2}$, for films, opens two-	
$2\frac{1}{4} \times 2\frac{1}{4}$ Developing paper only20	thirds35
Brownie Printing Frame, No. 2, for		Ditto, for plates40
$2\frac{1}{4} \times 3\frac{1}{4}$ Developing paper only20	Eastman 4×5 , opens two-thirds35
Eastman, for $2\frac{1}{4} \times 3\frac{1}{4}$ plates and V. P.		Eastman 5×7 , opens two-thirds45
or smaller film negatives30		

KODALOID PRINTING MASKS

These transparent, orange-red color masks are intended for use with Maskit Printing Frames. Supplied in sets of three, each with different size opening.

Per set of $3, 3\frac{1}{4} \times 4\frac{1}{4}$. \$0.25 Per set of $3, 3\frac{1}{4} \times 5\frac{1}{2}$. \$0.30 Per set of $3, 5 \times 7$. . \$0.35
Black paper masks, same sizes as above. Price, per set of 3, \$0.10

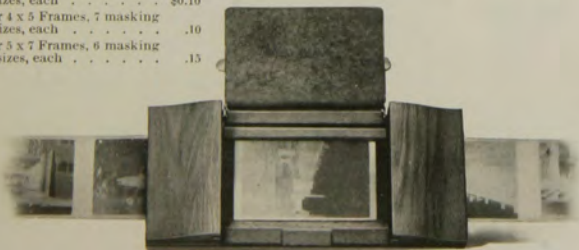
EASTMAN PRINTING MASKS

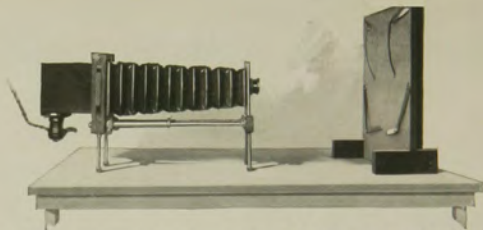
Made of transparent Kodaloid, to fit the regular Printing Frames, and offering various sizes of openings.

For 3A Frames, 8 masking
sizes, each \$0.10

For 4 x 5 Frames, 7 masking
sizes, each10

For 5 x 7 Frames, 6 masking
sizes, each15





KODAK ENLARGING OUTFIT

THE Kodak Enlarging Outfit suits the needs of the amateur who is doing his own enlarging. Although small in size and so compact as to be easily stored, it is a thoroughly practical instrument and capable of almost unlimited results.

Enlargements up to the size of the easel (14 x 17 inches), or even larger if desired, may be readily made from negatives of any size up to 4 x 6.

The outfit includes Enlarging Camera, lens and diaphragm (largest stop U. S. 4-), easel, lamp housing, light cord and plug, but does not include the 60 Watt Mazda electric light bulb.

*Kodak Enlarging Outfit	\$25.22
Lantern Slide Block75
Portrait Attachment No. 575

BROWNIE ENLARGING CAMERA

The Brownie Enlarging Camera consists of a light-tight cone, made in two sections, with an attachment at the small end to hold the negative, and another at the large end for the paper. The lens is supported between negative and paper at just the proper focal distance.

The cameras, with the exception of the No. 2 Brownie Post-card, are collapsible, so that they fold flat and may be conveniently carried in a suitcase.



*No. 2 Brownie Post-card Enlarging Camera, for $3\frac{1}{4} \times 5\frac{1}{2}$ enlargements from $2\frac{1}{4} \times 3\frac{1}{4}$ negatives	\$3.71
*No. 2 Brownie Enlarging Camera, for 5 x 7 enlargements from $2\frac{1}{4} \times 3\frac{1}{4}$ negatives	4.86
*No. 3 Ditto, for $6\frac{1}{2} \times 8\frac{1}{2}$ enlargements from $3\frac{1}{4} \times 4\frac{1}{4}$ negatives, also for proportionate enlargements from smaller negatives	6.38
*No. 4 Ditto, for 8 x 10, $6\frac{3}{8} \times 10$ and $5\frac{3}{8} \times 9\frac{3}{8}$ enlargements from 4 x 5, $3\frac{1}{4} \times 5\frac{1}{2}$ and $2\frac{1}{8} \times 4\frac{1}{8}$ negatives, respectively	6.91

V. P. KODAK ENLARGING CAMERA

This is made upon the same principle as the Brownie Enlarging Camera, excepting that being small in itself, it is not made collapsible and is in one section only.

It offers the simplest means for making $3\frac{1}{4} \times 5\frac{1}{2}$ enlargements from $1\frac{1}{8} \times 2\frac{1}{2}$ negatives.

*Vest Pocket Kodak Enlarging Camera	\$3.71
---	--------

*These prices include the Excise War Tax

VELOX PAPER

VELOX is a developing-out paper that prints in any light, and therefore permits the amateur to utilize his evening hours in print making. It requires no dark room. These factors, plus its simplicity of manipulation, and variety of grades and surfaces, make it suitable for all amateur requirements.

Velox is divided broadly into three kinds of paper, called "Contrast," "Regular" and "Special," each division containing a variety of surfaces. "Contrast" and "Regular" papers develop quickly and are best suited for negatives lacking contrast. "Special" papers develop slowly, and give soft effects from hard negatives.

Velox "Contrast" is made in Carbon (matte) single weight and Velvet (semi-gloss) both single and double weight. Contrast Velox will secure the best possible results from extremely thin or from dense flat negatives.

Velox "Regular" has the following surfaces: Carbon (matte), Glossy, Glossy double weight, Velvet, Velvet double weight. Velvet is recommended for very flat negatives and gives semi-gloss prints of exceptional quality.

In the "Special" class, the surfaces are Carbon (matte), Portrait (smooth matte), Portrait double weight, Rough, Glossy, Glossy double weight, Velvet, and Velvet double weight. Special Velvet Velox has a greater range than any of the other "Special" papers.

Royal Velox is coated on an India tint stock in "Regular" and "Special," in one surface, and just rough enough to produce soft, mellow-tinted prints.

PRICES

Size	Single Weight			Double Weight		
	Dozen	½ Gross	Gross	Dozen	½ Gross	Gross
1½ x 2½	\$0.12		\$1.10	\$0.15		\$1.40
2¼ x 3¼	.12		1.10	.15		1.40
2½ x 4¼	.15		1.35	.20		1.70
3½ x 3½	.15		1.60	.20		2.00
3¼ x 4¼	.20		1.75	.25		2.20
2½ x 4½	.20		1.75	.25		2.20
3¼ x 5½	.20		2.00	.25		2.50
4 x 5	.25		2.30	.30		2.90
2¼ x 7	.25		2.00	.25		2.50
4¼ x 6½	.30		3.05	.40		3.80
5 x 7	.40	\$2.10	3.90	.50	\$2.60	4.90
3½ x 12	.50	2.60	4.75	.60	3.10	5.95
Velox Post-cards, 3½ x 5½, furnished in Regular Velvet, Special Velvet, Special Portrait, Regular Glossy, Special Glossy and Regular Royal and Special Royal						
				.30	1.50	2.90
Ditto, Double Post-cards, 3½ x 11 inches						
				.60	3.00	5.80
Brownie Post-cards, 2¼ x 4¼, Regular and Special Velvet						
				.20	1.10	2.15

VELOX SUNDRIES

N. A. (Non-abrasion Velox) Liquid Developer, 4-ounce bottle (makes 16 ounces for Special, Regular or Contrast)	\$0.28
Ditto, 16-ounce bottle84
Nepera Solution, per 4-ounce bottle28
Ditto, per 16-ounce bottle84
Nepera Auxiliary Powders (for converting Nepera solution to a film or plate developer), per package 1 dozen35
Velox Re-developer for Sepia Tones, per 4-ounce bottle50
*Ditto, 2 ounces (sufficient for 150 4 x 5 prints)30
*Velox Re-developer Tubes, for sepia toning, per package 12 tubes84
Velox Liquid Hardener, per 4-ounce bottle15
Ditto, 8-ounce bottle25
Kodak N. A. M. Q. Developer, per package 3 tubes30
Kodak Acid Fixing Powder for fixing Velox Prints, per pound25
Ditto, $\frac{1}{2}$ pound15
Ditto, $\frac{1}{4}$ pound10

*Package also includes bleaching agent.

KODAK VELVET GREEN

Effects heretofore to be had only by the carbon process can be secured by any amateur photographer with this paper.

For landscapes, for marine scenes, and in fact, for the majority of outdoor amateur negatives, the rich green of prints on Kodak Velvet Green produces most beautiful and harmonious effects, with an indescribable "atmosphere" of nature itself.

And to use this paper the amateur need not learn new processes, nor possess extraordinary skill. Anyone who can print on Velox paper can print just as successfully on Kodak Velvet Green, as the two processes after exposure are identical, except for a slight change in the developing solution.

The surface—a smooth semi-matte—brings out detail fully, and the paper is supplied in both single and double weights.

Kodak Velvet Green Post-cards are very appropriate for use at vacation time.

Prices same as for Velox. (See page 49.)

EASTMAN BROMIDE PAPERS

For enlargements. Grades: Velvet, Royal, Standard, Enameled and Matte-enameled.

Size	Per Doz.	Size	Per Doz.	Size	Per Doz.
5 x 7	\$0.50	8 x 10	\$1.10	14 x 17	\$3.15
5 x 8	.55	10 x 12	1.70	16 x 20	4.20
6½ x 8½	.80	11 x 14	2.10	18 x 22	5.25

Other sizes in proportion

SOLIO PAPER

A rapid, glossy, printing-out paper

Size	Per Package, 2 Doz.	Size	Per Package, 2 Doz.
1½ x 2½	\$0.20	2¼ x 7 (No. 1 Panoram Kodak)	\$0.30
2¼ x 3¼	.20		Per Doz.
2½ x 4¼	.25	4¼ x 6½	\$0.25
3½ x 3½	.25	5 x 7	.30
3¼ x 4¼	.25	3½ x 12 (No. 4 Panoram Kodak)	.35
2½ x 4½	.25	Post-cards	.20
3¼ x 5½	.30	Double Solio Post-cards	.40
4 x 5	.40	Brownie Post-cards, 2¼ x 4¼	.15

Solio Toning and Fixing Powders, per carton, 5 tubes, \$0.25. Solio Combined Toning and Fixing Solution, per 8-ounce bottle, \$0.50. Ditto, 4-ounce bottle, \$0.30; post-paid, \$0.50. Solio Hardener, per 8-ounce bottle, \$0.70.

KODAK DRY MOUNTING TISSUE

Mounts prints even on thin mounts without curl. The simplest method of mounting, no apparatus being required—just fix the tissue on print, lay on mount and press with a warm flat iron; no sticky fingers, no muss of any kind.

PRICES

Size, 3½ x 3½, 3 dozen	\$0.10	Size, 4 x 5, 2 dozen	\$0.10
Size, 3¼ x 4¼, 3 dozen	.10	Size, 4¼ x 6½, 1 dozen	.10
Size, 3¼ x 5½, 2 dozen	.10	Size, 5 x 7, 1 dozen	.10

GLASS DRY PLATES

Size	Seed (Single Coated)	Per Doz.	Size	Seed Non-Halation Ortho (Double Coated)	Per Doz.
3½ x 3½		\$0.45	3¼ x 4¼		\$0.65
3¼ x 4¼		.55	3¼ x 5½		.95
3¼ x 5½		.75	4 x 5		.95
4 x 5		.75	4¼ x 6½		1.40
4¼ x 6½		1.10	5 x 7		1.65
5 x 7		1.25	Cover Glass for Lantern Slides		.35
Lantern Slide Plates, 3¼ x 4		.55			

Lantern Slide Binders, per package, 50 strips . . . \$0.25

THE KODAK ALBUM

(Loose-leaf)



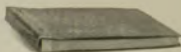
One-piece black narrow grained cowhide—leather lined. Leaves held in place by black silk cord through cover and metal tubes. Very flexible—Oxford Bible style edges.

4 1/4 x 7, A, 50 black leaves \$4.25
7 x 11, B, 50 black leaves 6.50
Package 12 extra leaves, A, \$0.15; B, \$0.18

THE OTHELLO ALBUM

(Loose-leaf)

This album has flexible covers of finest heavy black walrus leather or green artificial leather. Large pocket in back cover for holding loose prints. Has expansion back held firmly by countersunk black enamel screws; 50 jet black leaves of best quality and will hold 15 extra.



5 x 8, L.A. leather, \$4.50 CA, green . \$2.75 8 x 10, L.C. leather, \$7.00 CC, green . \$4.00
7 x 11, L.B. leather, 6.50 CB, green . 3.75 11 x 14, L.D. leather, 10.00 CD, green . 6.00
Package 12 extra leaves, A, \$0.15; B, \$0.18; C, \$0.20; D, \$0.40

THE TROJAN ALBUM

(Loose-leaf)



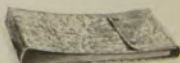
Made of finest quality flexible, embossed leather, with choice of bronze finish or blended grey and black shade and word "Photographs" stamped in gold leaf. Black silk cloth pocket for loose prints. Contains 50 jet black leaves of extra quality, held in place by cord inside of covers, making album loose-leaf.

5 x 8, BA, bronze, or GA, grey cover . \$3.50 10 x 12, BC, bronze, or GC, grey cover . \$7.25
7 x 11, BB, bronze, or GB, grey cover . 5.00 11 x 14, BD, bronze, or GD, grey cover . 7.75
Package 12 extra leaves, A, \$0.15; B, \$0.18; C, \$0.35; D, \$0.40

THE HERCULES ALBUM

(Loose-leaf)

This is one of the most attractive albums ever offered. The covers are flexible with choice of black, blended grey genuine leathers or rich maroon artificial leather with flap and clasps holding the album flat when filled. Has large pocket for loose prints; is furnished with 50 black leaves bound inside of cover by silk cord.



5 x 8, BA, black . . \$4.75 GA, blended . . \$4.40 MA, maroon . . \$2.60
7 x 11, BB, black . . 6.50 GB, blended . . 6.00 MB, maroon . . 3.50
10 x 12, BC, black . . 8.50 GC, blended . . 8.00 MC, maroon . . 4.75
9 x 14, BD, black . . 9.00 GD, blended . . 8.50 MD, maroon . . 5.00
Package 12 extra leaves, A, \$0.15; B, \$0.18; C, \$0.35; D, \$0.40

THE VEGA ALBUM

(Loose-leaf)

Open back style; black enameled screw holders. Unlimited capacity for extra leaves. Silk book cloth pocket on back cover. Black genuine cowhide, baby walrus finished.



5 x 8, A \$4.00 7 x 11, B \$5.50
10 x 12, C 7.25 9 x 14, D 7.50
Package 12 extra leaves, A, \$0.15; B, \$0.18; C, \$0.35; D, \$0.40

THE NILE ALBUM

(Loose-leaf)

A new handsome album ; cover of the best grade imitation leather, duo-tinted, alligator pattern ; 50 black leaves held in place by cord and holder inside of cover. The word "Photographs" stamped in gold foil on cover.

5x8, A \$1.65 7x11, B \$2.25
Package 12 extra leaves, A, \$0.15; B, \$0.18



THE AJAX ALBUM

(Loose-leaf)

This album has closed back and 50 black leaves held in place by cord and holder inside of covers. Choice of black narrow grained or rich maroon imitation leather covers.



5x 8, MA, maroon, or BA, black \$1.50
7x11, MB, maroon, or BB, black 2.10
10x12, MC, maroon, or BC, black 3.25
9x14, MD, maroon, or BD, black 3.35
Package 12 extra leaves, A, \$0.15; B, \$0.18; C, \$0.30; D, \$0.35

THE AGRIPPA ALBUM

(Loose-leaf)

Choice of genuine beautiful black grain leather or embossed black cloth cover; 50 black leaves held in place by silk cord and holder inside of cover.

5x 8, CA, cloth \$1.40; LA, leather \$2.75
7x11, CB, cloth 1.90; LB, leather 4.00
10x12, CC, cloth 2.85; LC, leather 6.00
9x14, CD, cloth 3.10; LD, leather 6.25
Package 12 extra leaves, A, \$0.15; B, \$0.18; C, \$0.30; D, \$0.35



THE THEBES ALBUM

Loose-leaf open back style; 50 black leaves held in place by silk cord drawn through metal tubes. The word "Photographs" stamped in gold on leather cover, plain relief on cloth cover. Choice of black seal grain leather or artificial black leather covers.

5½ x 7, CA, cloth \$1.40; LA, leather . . \$2.65 8x10, CD, cloth \$2.10; LD, leather . . \$4.50
7 x 10, CB, cloth 1.90; LB, leather . . 4.00 11x14, CE, cloth 3.40; LE, leather . . 7.00
10 x 7, CC, cloth 1.90; LC, leather . . 4.00
Package 12 extra leaves, A, \$0.15, B, \$0.18; C, \$0.18; D, \$0.20; E, \$0.40

THE JUNO ALBUM

Open back style ; 50 black loose leaves held in place by metal tubing and silk cord through covers. Dark green, brown or black imitation leather cover.

5x 8, GA, green, BA, brown or CA, black \$1.45
7x11, GB, green, BB, brown or CB, black 2.00
Package 12 extra leaves, A, \$0.15; B, \$0.18



THE APOLLO ALBUM

Solid bound rounded back. Black English grained leather or black watered silk cloth cover with pocket for loose prints. Black leaves only.



5x 8, 25 leaves, CA, cloth \$1.25; LA, leather \$2.50
7x11, 25 leaves, CB, cloth 1.60; LB, leather 3.50
10x12, 25 leaves, CC, cloth 2.50; LC, leather 5.25
9x14, 25 leaves, CD, cloth 2.60; LD, leather 5.50
5x 8, 50 leaves, CE, cloth 1.40; LE, leather 2.75
7x11, 50 leaves, CF, cloth 1.90; LF, leather 4.00
10x12, 50 leaves, CG, cloth 2.85; LG, leather 6.00
9x14, 50 leaves, CH, cloth 3.00; LH, leather 6.25

THE FORUM ALBUM

Flexible embossed cloth cover, in imitation black leather.

5½ x 7, A, 25 black leaves, or N, 25 Sepia leaves	\$0.95
7 x 10, B, 25 black leaves, or O, 25 Sepia leaves	1.25
10 x 7, C, 25 black leaves, or P, 25 Sepia leaves	1.25
11 x 14, D, 25 black leaves, or R, 25 Sepia leaves	2.00
5½ x 7, E, 50 black leaves	1.25
7 x 10, F, 50 black leaves	1.60
10 x 7, G, 50 black leaves	1.60
11 x 14, H, 50 black leaves	2.60

THE RHODES ALBUM



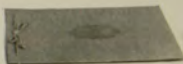
Open back style—choice of genuine black grained leather or embossed black book cloth with 50 black leaves held in place by metal tubes and silk cord through cover.

5 x 8, CA, cloth \$1.25; LA, leather	\$2.65	7 x 11, CB, cloth, \$1.75; LB, leather	\$3.75
Package 12 extra leaves, A, \$0.15; B, \$0.18			

THE ARTIST'S ALBUM

(Loose-leaf system, silk lacing)

No. 1, black leaves; No. 2, white leaves; No. 3, Sepia leaves, 5½ x 7	\$0.35
Extra leaves, package of 5	.09
No. 4, black leaves; No. 5, white leaves; No. 6, Sepia leaves, 7 x 10	.50
Extra leaves, package of 5	.12



EASTMAN FILM NEGATIVE ALBUMS



These albums afford a safe, convenient and efficient way of keeping film negatives. Each leaf is, itself, an envelope, and the negatives do not come in contact with each other. The index furnishes a ready reference.

PRICES

For 100 negatives, 1½ x 2½	\$0.75
For 100 negatives, 2½ x 4¼, or smaller	.75
For 100 negatives, 3¼ x 4¼, or 4 x 5, or smaller	1.00
For 100 negatives, 3¼ x 5½, or smaller	1.00
For 100 negatives, 5 x 7, or smaller	1.50

THE AMATEUR FOLDER

This folder is just the thing for carrying around or mailing the favorite pictures. It is made of a marble grey cover stock—durable. The picture is inserted under the corners which holds it securely.

No.	Price, per doz.
1 for 2¼ x 3¼, prints Upright or Horizontal	\$0.50
1A for 2½ x 4¼, prints Upright or Horizontal	.55
2C for 2½ x 4¾, prints Upright or Horizontal	.57
3A for 3¼ x 5½, prints Upright or Horizontal	.60

KODAK CARD MOUNTS

THE BALTIC—BUFF, BROWN OR GREY

Heavy stock, beveled edges, heavy borders. Sold only in lots of fifty, one kind and size.

No.	For Prints	Size of Mount	Per 100	Per 50	No.	For Prints	Size of Mount	Per 100	Per 50
0	1½ x 2½	3½ x 4¼	\$1.75	\$0.90	2C	2½ x 4½	5½ x 7½	\$2.65	\$1.35
1	2¼ x 3¼	4½ x 5½	2.20	1.10	3A	3¼ x 5½	5½ x 8	2.85	1.45
1A	2½ x 4¼	4½ x 6¼	2.40	1.20	4	4 x 5	6 x 7	3.50	1.70
2	3½ x 3½	5½ x 5½	2.60	1.30	4A	4¼ x 6½	6½ x 8½	4.20	2.15
3	3¼ x 4¼	5½ x 6½	2.60	1.30	5	5 x 7	8 x 10	5.20	2.65

TRIUMPH—ASH GREY AND ARTIST BROWN

No.	Color	For Prints	Size of Mount	Per 50	No.	Color	For Prints	Size of Mount	Per 50
A1	Grey	5 x 7	8 x 10	\$2.50	C1	Grey	8 x 10	12 x 14	\$4.25
A2	Brown	5 x 7	8 x 10	2.50	C2	Brown	8 x 10	12 x 14	4.25
B1	Grey	6½ x 8½	10 x 12	3.50	D1	Grey	7 x 11	11 x 15	4.50
B2	Brown	6½ x 8½	10 x 12	3.50	D2	Brown	7 x 11	11 x 15	4.50

ENLARGEMENT FOLDER

This new Enlargement Folder is supplied in Olive Grey or Brown, the former with white insert, and the latter, sepia-buff insert. Either style is furnished with both oval and rectangular masks

No.	Color	For Prints	Size Outside	Per Pkge ½ Doz.	No.	Color	For Prints	Size Outside	Per Pkge. ½ Doz.
A1	White	5 x 7	7½ x 9½	\$0.75	C1	White	6 x 10	9 x 13	\$0.99
A2	Buff	5 x 7	7½ x 9½	.75	C2	Buff	6 x 10	9 x 13	.99
B1	White	6½ x 8½	8¾ x 10¾	.87	D1	White	8 x 10	10¾ x 13	1.05
B2	Buff	6½ x 8½	8¾ x 10¾	.87	D2	Buff	8 x 10	10¾ x 13	1.05

INSLIP ENLARGEMENT MOUNT—ENGLISH GREY OR SEPIA-BUFF

No.	For Prints	Size Outside	Price	No.	For Prints	Size Outside	Price
A	3¼ x 5½	7¼ x 9¼	Doz. \$0.87	E	5 x 8½	9½ x 13½	Doz. \$0.99
B	3½ x 5½	8½ x 9¾	Doz. .87	F	6½ x 8½	11½ x 13½	Doz. 1.11
C	4¼ x 6½	8½ x 10¾	Doz. .87	G	6 x 10	10½ x 14½	Doz. 1.23
D	5 x 7	9½ x 11½	Doz. .87	H	8 x 10	12½ x 14½	Doz. 1.47
J	10 x 12	15¼ x 17¼	½ Doz. 1.47	L	8 x 14	14¼ x 20¼	½ Doz. .99
K	7 x 12	12 x 14	½ Doz. .99	M	11 x 14	17¼ x 20¼	½ Doz. 1.83

THE DRIMOUNT—ENGLISH GREY OR SEPIA-BUFF

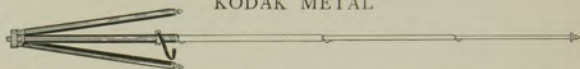
No.	For Prints	Size Outside	Price	No.	For Prints	Size Outside	Price
A	3¼ x 5½	7¼ x 9½	Doz. \$0.42	E	5 x 8½	9½ x 12½	Doz. \$0.57
B	3½ x 5½	7½ x 9½	Doz. .42	F	6½ x 8½	11½ x 13½	Doz. .60
C	4¼ x 6½	8¼ x 10½	Doz. .45	G	6 x 10	10½ x 14½	Doz. .63
D	5 x 7	9½ x 11½	Doz. .48	H	8 x 10	12½ x 14½	Doz. .75
J	10 x 12	15 x 17	½ Doz. .63	L	8 x 14	14 x 20	½ Doz. .63
K	7 x 12	11¼ x 16¼	½ Doz. .57	M	11 x 14	17 x 20	½ Doz. .78

STEREO MOUNTS

Size of Mount, 3½ x 7; color, Queen's Grey; per 100, \$1.15; per 50 \$0.60

TRIPODS

KODAK METAL

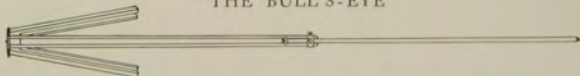


The Kodak Metal Tripods have telescoping legs of brass tubing—the three lower ones nickel—the upper, black enamel. They are light in weight, compact and exceptionally rigid.

The Nos. 1 and 2 have revolving heads permitting the camera to swing so as to take in the desired view without moving the tripod. They also have straps for holding the legs in place when closed. The Nos. 1C and 2C have solid heads and are without straps for holding legs. The No. 6 has an improved folding head, permitting the legs to fold flat.

	Sections	Length		Weight	Price
		Closed	Extended		
Kodak Metal Tripod No. 0	3	15½ inches	39½ inches	15 ounces	\$3.50
Kodak Metal Tripod No. 1C	4	15¼ inches	48¾ inches	25½ ounces	4.75
Kodak Metal Tripod No. 1	4	15 inches	48½ inches	24½ ounces	5.25
Kodak Metal Tripod No. 2C	5	13¼ inches	49¾ inches	26 ounces	5.50
Kodak Metal Tripod No. 2	5	13½ inches	49½ inches	25 ounces	6.00
Kodak Metal Tripod No. 6	6	11⅝ inches	40 inches	24 ounces	7.50
Leatherette Case, for Nos. 0 and 1					1.35
Leather Carrying Case, for Nos. 0 to 2, inclusive					3.75
Ditto, for No. 6					4.50
Rubber Tips for Metal Tripod Spurs (per set of 3)					.10

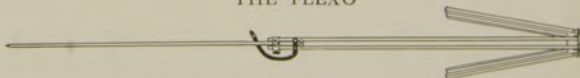
THE BULL'S-EYE



Two sections. Aluminum revolving head. Made of maple, with brass fittings. For 4 x 5 cameras, or smaller. Length, extended, 42½ inches; folded, 24 inches. The only two-section tripod that will go into a suitcase.

Price, \$2.00

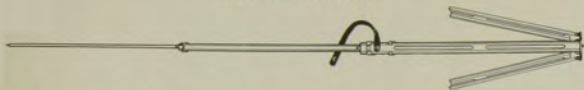
THE FLEXO



Two sections. Fixed, non-detachable head. Only clear, straight-grained wood is used in its construction.

Price, \$1.25

THE STANDARD



The feature of this tripod is the automatic locking of the sections when they are extended. Light, compact and rigid. Fixed, non-detachable head. Length, folded 21 inches, extended 53½ inches. Weight, 18 ounces. Cherry finish, brass trimmings.

Price, \$3.00

VEST POCKET KODAK TRIPOD ADAPTER

This little device can be affixed to a tripod head, to the Optipod or to the Kodapod, in a few turns. Choice of sockets permits placing for vertical or horizontal pictures. The camera may be instantly slipped into the adapter where it is firmly held by a spring clamp.

Price, \$0.50



THE OPTIPOD

The new Optipod is a combined tripod head and clamp which may be used effectively as a tripod when clamped to a chair, table, automobile, motorcycle, or any substantial object.

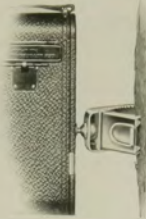
It is small and light, slipping readily into the pocket and may be carried without inconvenience.

When used in connection with a tripod, the Optipod gives the advantage of its ball and socket joint, permitting the camera to be tilted to any desired angle. This feature is especially desirable when photographing objects at close range and when it is impossible to place a tripod alone, in the desired position.

Price, \$1.00



THE KODAPOD



The little Kodapod—which is carried easily in the pocket—takes the place of a tripod, when a tree, fence, or similar object is near at hand. Its jaws have a bulldog grip that holds the wood like a vise, and likewise the Kodak, firmly in position. By means of a clamping screw, the camera may be adjusted to the correct vertical or horizontal position. It fits any standard tripod socket.

The Kodapod \$1.50

KODAK SELF TIMER

The Kodak Self Timer “presses the button” and permits the photographer to be in the picture. He first attaches it to the cable release, then sets it to “go off” in from a few seconds to three minutes as desired and releases the trigger. At the selected time, the piston rod of the timer, operated by compressed air, pushes against the head of the cable release which operates the shutter. It is a simple, reliable and very useful device.

The Timer is made in but one size, and may be used on any camera fitted with cable release, but cannot be used with “bulb” or finger release.



Kodak Self Timer \$1.25

KODAK TRIMMING BOARDS

Made of hard wood, with natural finish, have fine quality steel blades and are fitted with rule.

No. 1, capacity, 5 x 5
inches \$0.65

No. 2, capacity, 7 x 7
inches85

Transparent Trimming
Gauge(extra). For No.1 .35

Ditto, for No. 235





EASTMAN VISIBLE GRADUATE

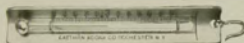
This new moulded graduate, as its name implies, may be easily read in the dark room under the rays of the ruby light.

The graduations are opaque, not translucent as is the case with most graduates.

2-ounce	\$0.25	8-ounce	\$0.50
4-ounce35	16-ounce75

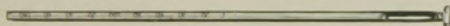
EASTMAN THERMOMETER

Especially valuable in tank or tray development. The hook for suspending and the curved back to fit inside of tank are two of its desirable features.



Eastman Thermometer \$1.00

THERMOMETER STIRRING ROD



A combined stirring rod and thermometer. Carefully tested and accurate. Has flat end for pulverizing. The rod is $\frac{1}{4}$ inch in diameter and $9\frac{1}{4}$ inches long.

Thermometer Stirring Rod \$1.00

EASTMAN PHOTO PASTE

A solid, first quality white paste that will not discolor print or mount.

4-ounce jar	\$0.15	3-ounce tube	\$0.15
8-ounce jar25	5-ounce tube25
2-ounce tube	\$0.10		



FLEXO PRINT ROLLER



A thoroughly practical roller for mounting. Has 4-inch rubber roller and black enamel frame.

Flexo Print Roller \$0.30

KODAK PRINT ROLLER

The best roller constructed for amateur use. Has two 6-inch rubber rollers and finely nickered frame.

K₂ Kodak Print Roller \$1.00



KODAK SAFELIGHT LAMP

The Kodak Safelight Lamp is ideal for all dark room uses, whether that be the work of the beginner, the advanced amateur, or the professional.

The lamp is supplied with a 5 x 7, Series 1, safelight for use with film or plates, not highly color sensitive. Safelights of other series may be obtained, if desired, for more advanced work. It is made of metal; neatly finished in a warm tone of brown and the inside is enameled white to intensify the force of the reflected light from the electric bulb, in the top.

The lamp is supplied complete, with electric fittings excepting electric bulb, including besides the safelight 4 1/2 feet of electric light cord.



Kodak Safelight Lamp \$3.50

SAFELIGHTS FOR KODAK SAFELIGHT LAMP

Series 00—Yellow light, for use with gaslight papers.

Series 0—Bright orange light, for use with bromide paper and lantern plates.

Series 1—Orange safelight, for use with films or plates not highly color sensitive.

Series 2—Safelight, for extra rapid orthochromatic plates sensitive to green but not red.

Series 3—Green safelight, for use with red-sensitive panchromatic plates.

Series 4—Bright green safelight, for use with ordinary plates, for those who cannot use a red light. Not safe for orthochromatic plates.

Size, 5 x 7 (any series), each \$0.75

BROWNIE SAFELIGHT LAMP

But little larger than the electric bulb it holds, the Brownie Safelight Lamp screws into an electric socket which may be conveniently situated close to the place where the work is to be done.

The lamp is made of metal, neatly japanned; has circular safelight in the end and side safelight as well. Both safelights are the regular Series 1, and removable so that other series may be used, if desired. A 15 Watt Mazda lamp is used, but is not supplied.

The Brownie offers a most satisfactory means for dark room lighting where electricity is available.

Brownie Safelight Lamp \$1.50

Extra Circular End Safelight (any series), each20

Extra Side Safelight (any series), each30





KODAK CANDLE LAMP

This clever little lamp is collapsible and can be packed into very small space when not in use. It is made of special, tested ruby fabric, bound in metal frames and gives a strong, safe light for the dark room.

Kodak Candle Lamp	\$0.35
Extra Candles for same, per dozen40

KODAK DARK ROOM LAMP

The Kodak Dark Room Lamp is oil burning and is fitted with both orange and ruby glass. It has an unusually broad wick regulated from the outside and gives a soft, steady light for the dark room.



No. 2 Kodak Dark Room Lamp	\$1.00
--------------------------------------	--------

FLASH LIGHT MATERIAL



The simplest method of making flash light pictures is by means of the Eastman Flash Sheets and Kodak Flash Sheet Holder. The sheets burn slowly, giving a broad, soft light, which is not so startling to the subject as to give a staring effect to the eyes.

The holder is provided with a saw tooth for holding the sheet in proper position, and is lighted from the back, through an aperture provided in the center for the purpose. In this manner the holder is always between the operator

and the flash sheet, and it may be held in the hand or supported on a tripod, a socket being provided for the purpose.

No. 1 Flash Sheets, per package of ½ dozen sheets 3 x 4	\$0.35
No. 2 Flash Sheets, per package of ½ dozen sheets 4 x 556
No. 3 Flash Sheets, per package of ½ dozen sheets 5 x 784
Kodak Flash Sheet Holder	1.25

Flash cartridges are recommended only where absolutely instantaneous exposures are required.

Eastman Spreader Flash Cartridges, for use with pistol or fuse (price includes both fuse and cap), per package of ½ dozen	\$0.50
Eastman Spreader Flash Cartridge Pistol	1.50
Eastman No. 1 Flash Cartridges, for use only with fuse, per package of ½ dozen	1.00
Ditto, No. 270
Ditto, No. 345

VELOX TRANSPARENT WATER COLOR STAMPS

THE making of beautifully colored prints or lantern slides, by the use of Velox Transparent Water Color Stamps, is an interesting diversion, enjoyed by an increasing number of amateurs.

Each book of stamps includes twelve sheets of colors and each sheet is divided by perforations into twenty-six stamps. To use any color, tear off a stamp, place in a small saucer or palette supplied with the outfit, and cover with about a teaspoonful of water.

The Velox Transparent Water Color Stamp Outfit offers the greatest convenience in coloring prints, as it includes the book of stamps, three brushes and a white enameled mixing palette, put up in a neat cardboard case.

Velox Transparent Water Color Stamps, complete booklet, 12 colors . . .	\$0.45
Separate Color Leaves, two sheets08
Set of 3 Special Brushes, per set50
Mixing Palette25
Velox Transparent Water Color Stamp Outfit, including book, three brushes and palette	1.00



KODAK JUNIOR FILM CLIP No. 1

The No. 1 clip is the most practical for tray development or drying of films. Two teeth in jaw to prevent film from slipping. One size only.

Kodak Junior Film Clip No. 1, each . . \$0.12



KODAK JUNIOR FILM CLIP No. 2

This new film clip is similar to the No. 1 but on account of being wider, may be used with wider film and will hold the film flat.

It is particularly adapted for use with 3A film, but may be used as well with larger or smaller film. Has jaws to prevent the wet film from slipping. Furnished in one size only, 3 inches wide.

Kodak Junior Film Clip No. 2, each . . \$0.25



EASTMAN FILM DEVELOPING CLIP

A thoroughly dependable clip. Made in two sizes and nickel-plated.

3½-inch, per pair \$0.30
5-inch, per pair50

DEVELOPING TRAYS

COMPOSITION

"Bull's-eye," 3½ x 4¼	\$0.15	"Bull's-eye," 5 x 7	\$0.40
"Bull's-eye," 4 x 517	"Bull's-eye," 2½ x 735
"Bull's-eye," 4 x 618	"Bull's-eye," 3½ x 1275

ENAMEL

Enamel Trays, 4 x 5	\$0.65	Enamel Trays, 4 x 6	\$0.75
Enamel Trays, 5 x 7	\$1.00		

SUNDRIES

Cable Release, each	\$0.35	Eastman Spotting Colors consists of four colors: black, blue, red and white, per set	\$0.25
Cable Release for Vest Pocket Kodak50	Ferrottype Plate, 10 x 14, light20
Hard Rubber Stirring Rod30	Ferrottype Plate, 10 x 14, heavy30
Finger Tips, set of 315		
Focusing Cloth, per yard	1.10	Eastman Special Squeegee, 8-inch	\$0.75

TESTED CHEMICALS



Certainty in making negatives and prints depends as much on the quality of your chemicals as on any other one thing. All Kodak chemicals are tested both photographically and for purity before the E. K. C. tested seal is allowed to go upon them. That seal is your protection.

Eastman Chemical Outfit consists of M. Q. and Special Developers, Intensifier, Reducer and Velox Re-developer	\$0.40
Eastman Special Developer Powders, per package 5, in sealed glass tubes25
Eastman Hydrochinon Developer Powders, per dozen60
Ditto, per ½ dozen30
Ditto, per package 5 powders, in sealed glass tubes30
Eastman Pyro Developer Powders, per dozen50
Ditto, per ½ dozen25
Ditto, per package 5 powders, in sealed glass tubes25
Eastman Tropical Developer, 5 powders, in sealed glass tubes40
Tozol, per 1-ounce bottle65
Elon, per 1 ounce	1.05
Kodolon, per 1 ounce60
Hydrochinon, per 1-ounce can30
Eastman Permanent Crystal Pyro, per 1-ounce bottle35
Velox Re-developer Tubes, package of 12 tubes84
Hypo Sulphite of Soda, granular, per pound13
Alum, powdered, per pound25
Kodak Acid Fixing Powder, per pound package25
Ditto, per ½-pound package15
Ditto, per ¼-pound package10
Eastman Intensifier, glass tube, per tube15
Eastman Reducer, per box of 5 tubes50
Eastman Opaque No. 1, per tube15
Potassium Bromide, granular, per ounce15
Acetic Acid, 28 per cent., per 1-pound bottle24
Citric Acid, 4-ounce bottle61
Eastman Tested Carbonate of Soda (desiccated), per 1-pound bottle33
Eastman Tested Sulphite of Soda (desiccated), per 1-pound bottle35

For Velox preparations, see page 50. For Solio preparations, see page 51. For Tank Developer Chemicals, see page 41

TERMS

The prices in this catalogue are strictly net, except to regular dealers who carry our goods in stock. THESE PRICES, OWING TO UNSETTLED CONDITIONS, ARE, HOWEVER, SUBJECT TO CHANGE WITHOUT NOTICE. For the convenience of our customers we recommend that they make their purchases from a dealer in photographic goods, as by so doing they can save both time and transportation charges.

Eastman Kodak Co., Rochester, N. Y.

“KODAK”

IS the registered and common-law Trade Mark of the Eastman Kodak Company and cannot be rightfully applied except to goods of their manufacture. When a dealer tries to sell you under the Kodak name, a camera or films or other goods not of their manufacture, you can be sure that he has an inferior article that he is trying to market on the Kodak reputation.

*If it isn't an Eastman
it isn't a Kodak*