

Mr. Noble

KODAK



F. S. Nolle
" 1916 "

KODAKS

and

KODAK SUPPLIES



1916

EASTMAN KODAK COMPANY

ROCHESTER, NEW YORK

"The Kodak City"



HONEST WORKMANSHIP HAS BECOME A HABIT IN
THE KODAK FACTORIES

A YEAR'S PROGRESS



A GAIN, achievement marks a year of Kodak history. Less than two years ago the Autographic Kodak was introduced. A year ago it was announced that "all folding Kodaks are now autographic." And now the Autographic feature has been extended to cover the entire line of folding Brownies.

By the use of the Autographic Kodaks, and now also by the use of the Autographic Brownies, you can date and title the negative at the time the exposure is made. You can write the all-important *who, when* and *where* on every negative, at the time, before you have forgotten. And when the last exposure has been made you can write your own name on the film for identification, practically eliminating all danger of loss when your work goes to the finisher.

For this you need Autographic film as well as an Autographic camera—but there is no advance in price over Eastman N. C. film. And there is no difference in the film itself—merely a change in the manner of spooling it. A thin red paper is used instead of the familiar red and black (duplex) paper. This red paper, in itself, is not fully light-proof, but between it and the film is a thin strip of black displacing tissue, which serves the double purpose of light-proofing the cartridge, and of permitting the recording on the film, by light, of the writing upon the red paper. When the date has been written on the red paper and printed (by exposing with door open to the sky, but not the sun, for from one to five seconds) the record is photographically impressed on the film and appears when the film strip is developed.

The Autographic Kodaks and Brownies each have a spring door in the back, which is closed by a stop. This little door covers the slot through which the writing is done on the red paper that protects the film. Any medium hard pencil, or the stylus which is provided for the purpose, can be used for writing the titles. The slot is so located that it brings the title into the margin between the exposures. This brings the title at the bottom of an upright or at the left-hand end of a horizontal exposure.

At home, in taking pictures of the children, on the vacation tour where one sees new faces and places, to the engineer and architect, to everyone who makes pictures, the autographic feature, found exclusively on Eastman cameras, offers a means of positive identification or record of each exposure, and at no extra cost. But it is not alone in the autographic feature that the new folding Brownies present unusual attraction. They are made of metal, covered with fine imitation leather and, without any reduction in efficiency, are but half the bulk of the former models. They are equipped with carefully tested lenses and accurate shutters. They are dependable; they work.

In the Brownies and in the Junior Kodaks there's a new size, $2\frac{7}{8} \times 4\frac{7}{8}$ inches and designated as No. 2C. A new size may seem to mean but little, but in reality it means a great deal. In this case it means an intermediate size in the elongated post-card shape that has proved so popular. It means more picture in proportion to the area. A score of years ago, 4×5 and $3\frac{1}{2} \times 3\frac{1}{2}$ pictures were popular. But in nearly every case such pictures, to give the best effect, needed trimming. In the case of a landscape something could, to advantage, be cut off the sky or the foreground or both, and in the case of portraits, trimming from either side improved the appearance. The 4×5 has been relegated to the "has beens" by the 3A ($3\frac{1}{4} \times 5\frac{1}{2}$) size and likewise the $3\frac{1}{2} \times 3\frac{1}{2}$ has been converted into an antique by the $2\frac{1}{2} \times 4\frac{1}{4}$. When we

introduced these two elongated sizes, failure was predicted, but they were dictated by common sense and experience and their immediate adoption was almost universal. Similarly, the $2\frac{7}{8} \times 4\frac{7}{8}$ will displace the $3\frac{1}{4} \times 4\frac{1}{4}$, except that the latter size may still hold the affection of the lantern-slide maker because of its easy adaptability to the standard lantern-slide plate.

The $2\frac{7}{8} \times 4\frac{7}{8}$ picture means not only a better shaped picture, but a better shaped camera: the long, thin, narrow kind that slips easily into the pocket.

Along with other improvements in photography, the advantages to be derived from the use of Anastigmat lenses are coming to be more and more appreciated. Better lenses mean better pictures, and our introduction this year of the Kodak Anastigmat *f.* 6.3 is in reality a foreseen and anticipated development. It is not the unexpected result of our wonderfully successful *f.* 7.7 Anastigmat, but is, in fact, a well planned evolution. Why we are able to make Anastigmats of high speed and the highest quality at prices below those of other Anastigmats is explained on page thirty-eight.

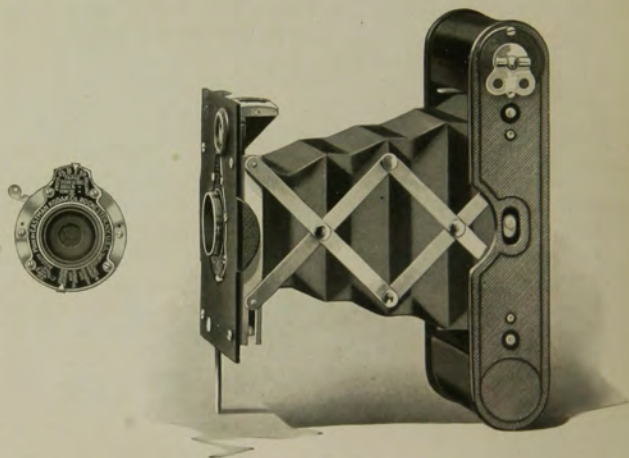
The providing of the highest lens efficiency through the Kodak Anastigmats at a low price, and the broadening of the use of the Autographic feature by its application to the inexpensive folding Brownie is in direct line with Kodak progress. For every such improvement as the Daylight-loading system, the Non-curling film, the Kodak Daylight Tank system of development and the Autographic feature that is adopted, we experiment with and discard a score of "improvements" that are found to be impractical. It is thus that while increasing efficiency we maintain that simplicity that is typified by the phrase: "Kodak means photography with the bother left out."

EASTMAN KODAK COMPANY

ROCHESTER, NEW YORK

"The Kodak City"

Vest Pocket Autographic Kodak



THOUGH so small as to slip easily into the vest pocket or a lady's hand-bag, the Vest Pocket Kodaks are mechanically as perfect as expert workmanship can make them. For a photographic record of the day's outing, or at any time when a memorandum record is useful, the little Vest Pocket Kodak with its Autographic feature fits into the day and the place as a veritable vest pocket notebook.

Although made almost entirely of metal, the camera is light in weight and compact. It opens easily and quickly to a fixed focus, and is instantly ready for service by the slight pressure of the shutter release at the upper right hand side of the front standard.

The shutter is the No. 0 Kodak Ball Bearing working with precision and without jerk or jar at variable indicated speeds of $\frac{1}{25}$ and $\frac{1}{50}$ of a second, and the time and "bulb" actions as well.

The camera is supplied with tested meniscus achromatic lens, producing excellent pictures under all ordinary conditions, and has the Kodak Autotime Scale as an aid to correct exposure.

Has brilliant reversible finder, black leather bellows, and is finished in nickel and black enamel.

The Vest Pocket Autographic Kodak has far more than its mere compactness to recommend it. Although small, it is built as accurately as a watch and is capable of making pictures of excellent quality.



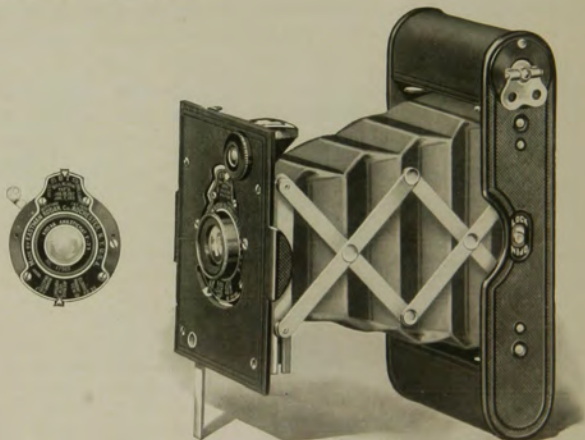
ACTUAL SIZE

DETAILS For rectangular pictures, $1\frac{5}{8} \times 2\frac{1}{2}$ inches. Capacity, 8 exposures without reloading. Size of Kodak, $1 \times 2\frac{3}{8} \times 4\frac{3}{4}$ inches. Weight, 9 ounces. Lens, meniscus achromatic, 3-inch focus. Shutter, Kodak Ball Bearing No. 0. Brilliant reversible finder. All metal body, black enamel finish and black leather bellows.

PRICE

Vest Pocket Autographic Kodak, meniscus achromatic lens and Kodak Ball Bearing shutter	\$6.00
Hand-bag for Vest Pocket Kodak25
Leather Case for Vest Pocket Kodak75
Soft Leather Carrying Bag	1.00
Autographic Film Cartridge, 8 exposures, $1\frac{5}{8} \times 2\frac{1}{2}$ (No. A 127)20
Kodak Portrait Attachment50

Vest Pocket Autographic Kodak, Special



THE Vest Pocket, *Special*, is as right as a full jeweled watch; as small as is practical, for a camera making pictures of the finest photographic quality, and withal so flat and smooth and small that it will slip unobtrusively into the vest pocket or a lady's hand-bag.

No matter how many larger cameras one may have, there's always an advantage in the possession of this little instrument—for it need never be left behind on account of weight or bulk.

These little cameras are as perfect as expert Kodak workmen can make them. They are made of metal throughout and covered with finest pin grain Morocco leather, and all working parts are highly nickered.

The three lens equipments are as perfect as can be found on any fixed focus hand camera, giving microscopic definition, freedom from astigmatism, flatness of field and absolute sharpness in details. The Kodak Anastigmat, *f.* 7.7, offers the unusual advantages of an anastigmat equipment at a surprisingly low price. The Kodak Anastigmat and Bausch & Lomb Kodak Anastigmat, *f.* 6.9 lenses, give the maximum of speed, and like the *f.* 7.7, are fully corrected.

The camera is fitted with No. 0 Kodak Ball Bearing shutter, is certain in its action, and works without jerk or jar at speeds of $\frac{1}{25}$ and $\frac{1}{30}$ of a second, as well as the time and "bulb" actions. Also supplied with Kodak Autotime Scale to aid in giving the correct exposure.

The Vest Pocket Kodaks load in daylight with eight-exposure Autographic Film Cartridges (No. A 127), and make pictures $1\frac{5}{8} \times 2\frac{1}{2}$ inches. These little cameras make an ideal gift, and for the purpose we can supply an imported satin-finish leather case in a shade of soft tan.



DETAILS For rectangular pictures, $1\frac{5}{8} \times 2\frac{1}{2}$ inches. Capacity, 8 exposures without reloading. Size of Kodak, $1 \times 2\frac{3}{8} \times 4\frac{3}{8}$ inches. Weight, 9 ounces. Lens. Kodak Anastigmat, *f.* 7.7, $3\frac{3}{8}$ -inch focus; Kodak Anastigmat, *f.* 6.9, $3\frac{3}{8}$ -inch focus; or Bausch & Lomb Kodak Anastigmat, *f.* 6.9, $3\frac{1}{2}$ -inch focus. Shutter, Kodak Ball Bearing No. 0. Brilliant reversible finder. All metal body, covered with pin grain Morocco; nickel and black-enamel finish and black leather bellows.

PRICE

Vest Pocket Autographic Kodak <i>Special</i> , Kodak Anastigmat lens, <i>f.</i> 7.7 and Kodak Ball Bearing shutter	\$10.00
Ditto, with Kodak Anastigmat, <i>f.</i> 6.9 lens	20.00
Ditto, with Bausch & Lomb Kodak Anastigmat, <i>f.</i> 6.9 lens (Formerly listed as the Zeiss Kodak Anastigmat)	22.50
Soft Leather Carrying Bag	1.00
Grain Leather Case	1.50
Imported Satin Finish Leather Case	2.00
Autographic Film Cartridge, 8 exposures, $1\frac{5}{8} \times 2\frac{1}{2}$ (No. A 127)20
Kodak Portrait Attachment50

No. 1 Autographic Kodak Junior



THE results with the No. 1 Autographic Kodak Junior, have been so satisfactory that it has enabled the beginner as well as the more experienced, to enjoy the pleasures of photography with assurances of success, and at a low cost. It has all the daylight features, the convenience and dependability that characterize the Kodak line.

Though simple in every detail as a focusing camera, the No. 1 Junior will be supplied, if desired, as a fixed focus camera for the convenience of those who prefer this feature. As a fixed focus camera it is supplied, however, with meniscus achromatic lens only and when opened for use, is in focus for objects at any distance.

The camera is fitted with the No. 0 Kodak Ball Bearing shutter with cable release, speeds $\frac{1}{25}$ and $\frac{1}{50}$ of a second, with either Rapid Rectilinear or meniscus achromatic lens, or with No. 1 Kodak Ball Bearing shutter, having variable speeds of $\frac{1}{25}$, $\frac{1}{50}$ and $\frac{1}{100}$ of a second when fitted with Kodak Anastigmat, *f.* 7.7 lens.

The No. 1 Autographic Kodak Junior makes $2\frac{1}{4} \times 3\frac{1}{4}$ pictures and loads with the Autographic Film Cartridge of six exposures (No. A 120), permitting the recording of data on each negative; is provided with automatic focusing lock, collapsible reversible finder, two tripod sockets—in fact, the practical, convenient working equipment which one expects in a true Kodak.

It is well made in every respect; is covered with a good quality of grain leather, and the metal parts are finished in nickel and black enamel.

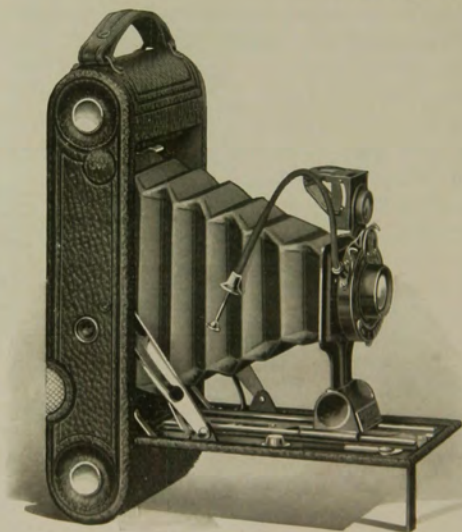


DETAILS For rectangular pictures, $2\frac{1}{4} \times 3\frac{1}{4}$ inches. Capacity, 6 exposures without reloading. Size of Kodak, $1\frac{7}{8} \times 3\frac{5}{8} \times 6\frac{5}{8}$ inches. Weight, 23 ounces. Lens, meniscus achromatic, $4\frac{1}{4}$ -inch focus. Also supplied with Rapid Rectilinear, or Kodak Anastigmat, *f.* 7.7 lens, if desired. Shutter, Kodak Ball Bearing with cable release. (See page 36.) Brilliant reversible collapsible finder.

PRICE

No. 1 Autographic Kodak Junior (Fixed focus), meniscus achromatic lens and No. 0 Kodak Ball Bearing shutter	\$9.00
No. 1 Autographic Kodak Junior (Focusing model, with scale), meniscus achromatic lens and No. 0 Kodak Ball Bearing shutter	9.00
Ditto, with R. R. lens	10.50
Ditto, with Kodak Anastigmat lens, <i>f.</i> 7.7, and No. 1 Kodak Ball Bearing shutter	15.00
Soft Leather Carrying Bag, with strap	1.50
Black Sole Leather Case, with strap	1.50
Autographic Film Cartridge, 6 exposures (No. A 120)20
Ditto, 2 exposures10
Kodak Portrait Attachment. (See page 45)50

No. 1A Autographic Kodak Junior



HERE is a compact, reliable camera of high efficiency, easy to operate and so thin as to be pocketed without inconvenience. The No. 1A Junior will appeal to anyone who prefers pictures of the $2\frac{1}{2} \times 4\frac{1}{4}$ size. Since the proportions are unusually pleasing for landscapes, street scenes and the like, in the horizontal position, and especially suited for portraiture when used vertically, this is one of the most popular of amateur sizes. Like the No. 1, this Kodak will be supplied with meniscus achromatic lens and fixed focus, if so desired.

The shutter is the Kodak Ball Bearing with cable release, which works not only for bulb and time exposures, but has variable indicated speeds of $\frac{1}{25}$, $\frac{1}{30}$ and $\frac{1}{100}$ of a second. The camera is furnished with either meniscus achromatic, Rapid Rectilinear or Kodak Anastigmat lens.

Simplicity marks this camera in every respect. It has an automatic focusing lock, which permits the camera to be brought to focus quickly for objects at any distance. The finder is of the new collapsible reversible type. It has two tripod sockets so that the camera may be easily used with a tripod in either the vertical or horizontal position. The back and bed are of aluminum, the covering is seal grain leather, bellows of black leather and metal parts are finished in nickel and black enamel.

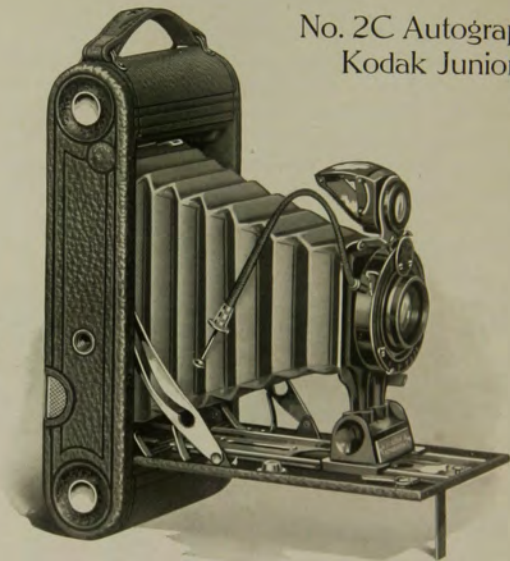


DETAILS For rectangular pictures, $2\frac{1}{2} \times 4\frac{1}{4}$ inches. Capacity, 12 exposures without reloading. Size of Kodak, $1\frac{5}{8} \times 3\frac{3}{4} \times 8$ inches. Weight, 28 ounces. Lens, meniscus achromatic, 5-inch focus. Also supplied with R. R. or Kodak Anastigmat, $f. 7.7$ lens, if desired. Shutter, Kodak Ball Bearing with cable release. (See page 36.) Brilliant reversible collapsible finder.

PRICE

No. 1A Autographic Kodak Junior (Fixed focus), meniscus achromatic lens and Kodak Ball Bearing shutter	\$11.00
No. 1A Autographic Kodak Junior (Focusing model, with scale), meniscus achromatic lens and Kodak Ball Bearing shutter	11.00
Ditto, with R. R. lens	13.00
Ditto, with Kodak Anastigmat lens, $f. 7.7$	18.00
Black Sole Leather Case, with strap	1.75
Soft Leather Carrying Bag, with strap	1.50
Autographic Film Cartridge, 12 exposures (No. A 116)50
Ditto, 6 exposures25
Ditto, 2 exposures12
Kodak Portrait Attachment. (See page 45)50

No. 2C Autographic Kodak Junior



THIS new camera was designed for those who prefer pictures of a size between the 1A and 3A sizes, though retaining the same pleasing proportions that have made these two sizes so popular.

The No. 2C Autographic Kodak Junior makes pictures $2\frac{7}{8} \times 4\frac{7}{8}$ inches and just as the 3A size—that is, $3\frac{1}{4} \times 5\frac{1}{2}$ inches—has displaced the once popular 4×5 , so it is expected that this new 2C will displace the $3\frac{1}{4} \times 4\frac{1}{4}$ size. The new 2C makes pictures of pleasing proportions, giving more for the area than the $3\frac{1}{4} \times 4\frac{1}{4}$ size, fitting the view better for a horizontal landscape, and is, as well, a far better shape for photographing a single figure or a high building.

This camera is similiar in every way to the Nos. 1 and 1A Juniors, differing only in the size of the pictures, but having

the same thin, compact form and reliable equipment, though the No. 2C is supplied only as a focusing camera.

The camera loads in daylight with ten, six or two-exposure Autographic Film Cartridges, permitting the recording of date and title, or any data that one may desire on the negative.

Though regularly supplied with meniscus achromatic lens, the camera, if desired, will be fitted with either Rapid Rectilinear or Kodak Anastigmat, *f.* 7.7 lens, the latter giving the advantages of a fine anastigmat equipment at a low price.

The shutter is the Kodak Ball Bearing with cable release, working at speeds of $\frac{1}{25}$, $\frac{1}{50}$ and $\frac{1}{100}$ of a second, also for "bulb" and time exposures. The leaves of this shutter, opening in the shape of a star, admit the maximum of light for a given exposure.



The camera has the Kodak characteristics of simplicity, compactness and reliability, and offers the Kodak high standard of efficiency. It has automatic focusing lock, a finder of the new collapsible, reversible type, and two tripod sockets. The back and bed are of aluminum, covered with fine seal grain leather, black leather bellows, and metal parts in nickel and black enamel.

DETAILS For rectangular pictures, $2\frac{7}{8} \times 4\frac{7}{8}$ inches. Capacity, 10 exposures without reloading. Size of Kodak, $1\frac{3}{4} \times 4\frac{3}{4} \times 8\frac{3}{4}$ inches. Weight, 38 ounces. Lens, meniscus achromatic, $4\frac{1}{4}$ -inch focus. Also supplied with R. R. or Kodak Anastigmat, *f.* 7.7 lens, $5\frac{3}{4}$ -inch focus, if desired. Shutter, Kodak Ball Bearing with cable release. (See page 36.) Brilliant reversible collapsible finder. Two tripod sockets. Black leather bellows.

PRICE

No. 2C Autographic Kodak Junior, with meniscus achromatic lens and Kodak Ball Bearing shutter	\$12.00
Ditto, with Rapid Rectilinear lens	14.00
Ditto, with Kodak Anastigmat, <i>f.</i> 7.7 lens	19.00
Black Sole Leather Case, with strap	1.75
Soft Leather Carrying Bag, with strap	1.75
Autographic Film Cartridge, 10 exposures (No. A 130)60
Ditto, 6 exposures35
Ditto, 2 exposures15
Kodak Portrait Attachment. (See page 45)50

Nos. 1A and 3 Autographic Kodaks



FOR those who wish to enjoy the pleasures of successful picture-making, these two cameras offer every means that the most discriminating amateur could desire.

The No. 1A makes $2\frac{1}{2} \times 4\frac{1}{4}$ pictures, a convenient shape for both horizontal and vertical composition, while the No. 3 makes $3\frac{1}{4} \times 4\frac{1}{4}$ pictures, which is known as the lantern slide size. The No. 3 is equipped with rising and sliding front, to assist in photographing architectural subjects. With these exceptions, the two cameras are practically identical.

The shutters are the Kodak Ball Bearing, with cable release, mounted in which are the finest Rapid Rectilinear lenses, or the Kodak Anastigmat, *f.* 7.7 lenses, offering the advantages of superior definition and high speed.

The cameras load in daylight with twelve, six or two-exposure Autographic Film Cartridges. The No. 3 may be equipped with Combination Back for the use of plates by the addition of a simple plate adapter. This is interchangeable with the regular back; is provided with ground glass for focusing and takes double plate holders. The Autographic feature can, of course, be used with film only.

Both cameras have all the Kodak simplicity, the exceptional lens and shutter equipment, and in addition possess the exclusive Autographic feature, permitting the recording of data on the film at the time of exposure. Both are handsomely finished throughout. Back and bed are of aluminum, metal parts are highly nickered, and covering is of finest seal grain leather.



DETAILS For rectangular pictures, No. 1A, $2\frac{1}{2} \times 4\frac{1}{4}$ inches; No. 3, $3\frac{1}{4} \times 4\frac{1}{4}$ inches. Capacity, 12 exposures without reloading. Size of Kodaks, No. 1A, $2 \times 3\frac{3}{4} \times 8$ inches; No. 3, $1\frac{3}{4} \times 4\frac{1}{2} \times 7\frac{1}{2}$ inches. Weight, No. 1A, 26 ounces; No. 3, 23 ounces. Lenses, double combinations, Rapid Rectilinear, focal length, 5 inches, or, if desired, Kodak Anastigmat, *f.* 7.7 lens. Shutters, Kodak Ball Bearing with cable release. Automatic focusing locks. Two tripod sockets. Brilliant reversible finders. Black leather bellows. No. 3 has rising and sliding front.

PRICES

	No. 1A $2\frac{1}{2} \times 4\frac{1}{4}$	No. 3 $3\frac{1}{4} \times 4\frac{1}{4}$
Autographic Kodak, R. R. lens, Kodak Ball Bearing shutter	\$17.50	\$20.00
Ditto, with Kodak Automatic shutter	22.50	25.00
Ditto, Kodak Anastigmat lens, <i>f.</i> 7.7, and Kodak Ball Bearing shutter	22.50	25.00
Autographic Film Cartridge, 12 exposures (No. A 116 for No. 1A; No. A 118 for No. 3)50	.70
Ditto, 6 exposures25	.35
Ditto, 2 exposures12	.15
Black Sole Leather Case, with strap	1.75	1.75
Soft Leather Carrying Bag, with strap	1.50	1.75
Combination Back, with ground glass		3.50
Double Glass Plate Holders, each		1.00
Kodak Portrait Attachment. (See page 45)50	.50

No. 3A Autographic Kodak



THE largest of the pocket series, the No. 3A Kodak has, ever since its introduction, been the leader in the hand camera field. Designed as a rival to the old 4 x 5 camera it has, through the popularity of the shape of the picture ($3\frac{1}{4} \times 5\frac{1}{2}$), and by reason of the fact that the camera itself is more conveniently pocketed than was the 4 x 5, practically displaced that once popular size. The shape of the picture is especially adapted to landscapes when used horizontally and to portraits when used vertically.

In the No. 3A Autographic Kodak is embodied the best thought of our manufacturing organization, and every improvement that makes for efficiency in a hand camera for general amateur use. The No. 3A loads in daylight with ten, six or two-exposure

Autographic Film Cartridges, giving the advantages of Autographic photography.

In lens equipment, this camera is regularly supplied with the finest quality Rapid Rectilinear lens, with a speed of *f.* 8, or, if desired, the Kodak Anastigmat, *f.* 7.7 lens, offering the anastigmat advantages at a moderate price. It is also fitted with Kodak Ball Bearing shutter with cable release; has rising and sliding front, and will accommodate glass plates by the addition of a Combination Back, which is interchangeable with the regular back. The Autographic feature, however, can be used only with Autographic Film, not with glass plates.

All of these features combine to make the 3A Autographic Kodak an efficient camera, but at the same time a camera so simple that any beginner can make good pictures with it from the start. The camera is made of aluminum, has finely nickeled parts and is covered with best quality seal grain leather.



DETAILS For rectangular pictures, $3\frac{1}{4} \times 5\frac{1}{2}$ inches. Capacity, 10 exposures without reloading. Size of Kodak, $2 \times 4\frac{3}{4} \times 9\frac{1}{2}$ inches. Weight, 41 ounces. Lens, double combination, R. R., focal length, $6\frac{3}{4}$ inches, or if desired, Kodak Anastigmat, *f.* 7.7 lens. Shutter, Kodak Ball Bearing. Two tripod sockets. Black leather bellows. Brilliant reversible finder with hood. Automatic focusing lock for films. Double focusing scale for films or plates.

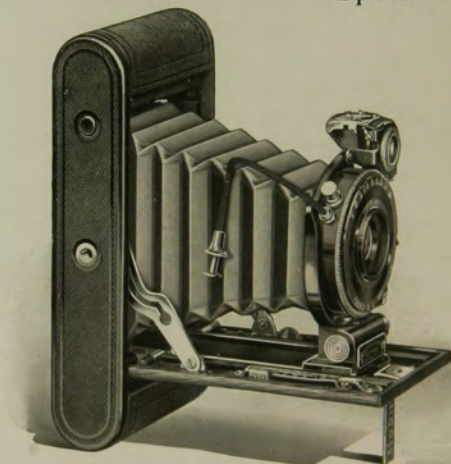
PRICE

No. 3A Autographic Kodak, R. R. lens, Kodak Ball Bearing shutter . .	\$22.50
Ditto, with Kodak Automatic shutter	27.50
Ditto, with Kodak Anastigmat lens, <i>f.</i> 7.7, and Kodak Ball Bearing shutter . .	27.50
Ditto, with Kodak Automatic shutter	32.50
Black Sole Leather Case, with strap	\$2.25
Soft Leather Carrying Bag	2.00
Combination Back	3.50
Double Glass Plate Holder, $3\frac{1}{4} \times 5\frac{1}{2}$, each	1.00
Autographic Film Cartridge, 10 exposures, $3\frac{1}{4} \times 5\frac{1}{2}$ (No. A 122)70
Ditto, 6 exposures40
Ditto, 2 exposures20
Kodak Portrait Attachment50



SHOWING COMBINATION BACK

No. 1 Autographic Kodak Special



HERE is quality.

To produce a camera, combining with Kodak simplicity, the utmost in lens and shutter efficiency, in mechanical perfection and in line and finish was not merely undertaken, it was accomplished in the making of the No. 1 Autographic Kodak, *Special*.

It is a small camera for a comparatively small picture but nothing has been sacrificed for mere littleness. The lenses have a sufficient length of focus to give the desirable perspective, and the shutter is large enough to give the full benefit of the high speed of the lenses. It is a capable instrument, optically correct and works with a smoothness and precision that is a mechanical delight.

The regular equipment is the Bausch & Lomb Kodak Anastigmat lens, *f.* 6.3, and Optimo shutter, with cable release, highest speed $\frac{1}{300}$ of a second, and variable speeds to one second, and it has also both "bulb" and time actions. Five other high-grade lens equipments are also listed.

It is quickly opened and extended, the focusing scale is easily adjusted for all distances, by a simple lever attachment. It has a new brilliant, collapsible, reversible finder with revolving mask for correct composition of pictures in both vertical and horizontal positions.

The camera is beautifully finished throughout and covered with the finest quality long grain calf; has black leather bellows and highly nickeled trimmings.



DETAILS For rectangular pictures, $2\frac{1}{4} \times 3\frac{1}{4}$ inches. Capacity, 6 exposures without reloading. Size of Kodak, $1\frac{3}{8} \times 3\frac{3}{8} \times 6\frac{5}{8}$ inches. Weight, 26½ ounces. Lens, Bausch & Lomb Kodak Anastigmat, *f.* 6.3, focal length, $4\frac{1}{8}$ inches. Shutter, Optimo with cable release. New brilliant, reversible, collapsible finder. Two tripod sockets and new lever focusing device.

PRICE

No. 1 Autographic Kodak, <i>Special</i> , Bausch & Lomb Kodak Anastigmat lens, <i>f.</i> 6.3, Optimo shutter. (Formerly listed as the Zeiss Kodak Anastigmat)	\$45.00
Ditto, with Kodak Anastigmat lens, <i>f.</i> 6.3, $4\frac{1}{8}$ -inch focus	40.00
Ditto, with Cooke Kodak Anastigmat lens, <i>f.</i> 6.3, $4\frac{1}{8}$ -inch focus	36.00
Ditto, with Bausch & Lomb Special Anastigmat, <i>f.</i> 6.3, $4\frac{1}{8}$ -inch focus (Formerly listed as the B. & L. Anastigmat)	36.00



Ditto, with Bausch & Lomb Tessar, Series IIb, <i>f.</i> 6.3, $4\frac{1}{8}$ -inch focus (Formerly listed as the B. & L. Zeiss Tessar)	54.00
Ditto, with Bausch & Lomb Tessar, Series Ic, <i>f.</i> 4.5, $3\frac{1}{2}$ -inch focus (Formerly listed as the B. & L. Zeiss Tessar)	56.00
Long Grain Leather, Velvet Lined Case, with strap	2.75
Soft Leather Carrying Bag	1.50
Autographic Film Cartridge, 6 exposures, $2\frac{1}{4} \times 3\frac{1}{4}$ (No. A 120)	.20
Ditto, 2 exposures	.10
Kodak Portrait Attachment. (See page 45)	.50

Nos. 1A and 3 Autographic Kodaks, Special



THE best that is possible in hand cameras is here combined, in efficiency, beauty in design and finish, speed and accuracy. The finest anastigmat lenses ; the highest shutter speed desirable, except in cameras equipped with focal plane shutters ; the best materials procurable, and all beautifully finished in genuine Persian Morocco, with black leather bellows and finely nickeled fittings.

The Nos. 1A and 3 Autographic, *Specials*, are alike in every respect except in size—the No. 1A making $2\frac{1}{2} \times 4\frac{1}{4}$ pictures, and the No. 3, pictures $3\frac{1}{4} \times 4\frac{1}{4}$ inches.

Each is equipped with the Autographic feature, with Bausch & Lomb Kodak Anastigmat lens working at the maximum opening of *f.* 6.3, and the Compur shutter, having time, bulb actions and

varying speeds from one second to $\frac{1}{250}$ of a second. The fast lenses give the *Specials* a great advantage over the ordinary camera in dull lights, and they have shutters that make them second only to cameras having focal plane shutters for photographing rapidly moving objects.

They have rising and sliding fronts, reversible brilliant finders with spirit level, rack and pinion for accurate focusing, in fact, every convenience that adds to efficiency in a hand camera. The No. 3 will take plates by the addition of a Combination Back (supplied extra), but obviously the Autographic feature can be used only with Autographic films.



Although these Kodaks possess every feature essential to the most successful work in amateur photography, they are so simple to operate that a beginner can learn to use them without the slightest difficulty.

DETAILS For rectangular pictures, No. 1A, $2\frac{1}{2} \times 4\frac{1}{4}$ inches; No. 3, $3\frac{1}{4} \times 4\frac{1}{4}$ inches. Capacity, 12 exposures without reloading. Size of Kodaks, No. 1A, $2 \times 3\frac{3}{4} \times 8$ inches; No. 3, $1\frac{1}{2} \times 4\frac{1}{2} \times 8$ inches. Weight, No. 1A, 30 ounces; No. 3, 32 ounces. Lens, Bausch & Lomb Kodak Anastigmat, speed *f.* 6.3, focal length, No. 1A, 5 inches; No. 3, 5 inches. Shutter, Compur. Two tripod sockets. Brilliant reversible finder, with hood. Spirit level. Rack and pinion for focusing.

PRICES

	No. 1A $2\frac{1}{2} \times 4\frac{1}{4}$	No. 3 $3\frac{1}{4} \times 4\frac{1}{4}$
Autographic Kodak, <i>Special</i> , Bausch & Lomb Kodak Anastigmat lens, <i>f.</i> 6.3, Compur shutter. (Formerly listed as the Zeiss Kodak Anastigmat)	\$49.00	\$51.00
Ditto, with Kodak Anastigmat, <i>f.</i> 6.3 lens, $5\frac{3}{16}$ -inch focus	45.00	47.00
Ditto, with Cooke Kodak Anastigmat lens, <i>f.</i> 6.3, 5-inch focus	40.00	42.00
Ditto, Bausch & Lomb Tessar Series IIb Anastigmat lens, <i>f.</i> 6.3, $5\frac{3}{8}$ -inch focus. (Formerly listed as the B. & L. Zeiss Tessar)	59.50	61.50
Grain Leather, Velvet Lined Case, with strap	3.00	3.00
Soft Leather Carrying Bag	1.50	1.75
Combination Back		4.00
Double Glass Plate Holders, each		1.00
Autographic Film Cartridge, 12 exposures (No. A 116 for No. 1A; No. A 118 for No. 3)	.50	.70
Ditto, 6 exposures	.25	.35
Ditto, 2 exposures	.12	.15
Kodak Portrait Attachment. (See page 45)	.50	.50

No. 3A Autographic Kodak, Special



THE 3A Kodak, *Special*, long ago established itself as the quality leader in hand camera photography. Year by year improvements and refinements have maintained that leadership. In this, as in all Kodak models, we have been careful not to let the desire for mere compactness destroy the optical efficiency. To make pictures that are free from disagreeable distortion, lenses of fairly long focus (in proportion to the size of the picture) must be used. If these, as in the case of the 3A Special, are to be also fast lenses, they must be large lenses and large lenses require large shutters. The 3A Special is, above all, efficient optically. In every detail is proof of the fact that it is designed by those who know the most exacting requirements of

hand camera photography and proof that it is made by men with whom honest workmanship has become a habit.

The 3A Autographic, *Special*, offers a choice of the Bausch & Lomb Kodak Anastigmat, *f.* 6.3 lens, and three other high-grade lenses, including the new Kodak Anastigmat, *f.* 6.3. (See page 38.) The shutter is the Optimo, operated either by cable or finger release, and has variable speeds from one second to $\frac{1}{300}$ of a second.

Has rising front, collapsible reversible finder with adjustable mask, rack and pinion for focusing, and the usual focusing scale in addition to the Kodak Range Finder. Like the 1A and 3 *Specials*, it is made of aluminum; richly finished in genuine Persian Morocco, the bellows is of selected black leather, and these together with the highly nickered metal parts and dull black enamel shutter, are in harmony with its high quality and general efficiency.



DETAILS For rectangular pictures, $3\frac{1}{4} \times 5\frac{1}{2}$ inches. Capacity, 10 exposures without reloading. Size of Kodak, $2 \times 4\frac{3}{4} \times 9\frac{1}{2}$ inches. Weight, 42 ounces. Lens, Bausch & Lomb Kodak Anastigmat, speed, *f.* 6.3, focal length, $6\frac{1}{4}$ inches. Shutter, Optimo with cable release. Two tripod sockets. Brilliant collapsible reversible view finder with adjustable window. Rack and pinion for focusing.

PRICE

No. 3A Autographic Kodak, <i>Special</i> , Bausch & Lomb Kodak Anastigmat lens, <i>f.</i> 6.3, and Optimo shutter. (Formerly listed as the Zeiss Kodak Anastigmat)	\$66.00
Ditto, with Kodak Anastigmat lens, <i>f.</i> 6.3, $6\frac{1}{4}$ -inch focus	55.00
Ditto, with Bausch & Lomb Tessar Series IIb Anastigmat lens, <i>f.</i> 6.3, $6\frac{7}{8}$ -inch focus. (Formerly listed as the B. & L. Zeiss Tessar)	77.00
Grain Leather, Velvet Lined Case, with strap	3.50
Soft Leather Carrying Bag	2.00
Combination Back	4.00
Double Glass Plate Holders, each	1.00
Autographic Film Cartridge, 10 exposures (No. A 122)70
Ditto, 6 exposures40
Ditto, 2 exposures20
Kodak Portrait Attachment. (See page 45)50



Autographic Backs

THE Autographic feature may be added to the Kodak not originally equipped with this improvement, and we are offering our old customers the advantages of Autographic photography at small cost.

There is no extra charge for the Autographic Film and with the Autographic feature incorporated in the old Kodak, one may keep an authentic record of each exposure on the negative, to determine at any time, when and where each picture was made.

Autographic Backs will be supplied for the Kodaks listed, at the following prices :

No. 1 Kodak Junior	\$2.50
No. 1A Kodak Junior	3.00
No. 1A Folding Pocket Kodak, R. R. Type	3.50
No. 3 Folding Pocket Kodak	3.50
No. 3A Folding Pocket Kodak	3.75
No. 4 Folding Pocket Kodak	4.00
No. 4A Folding Kodak	4.50
No. 1 Autographic Kodak, <i>Special</i>	3.50
No. 1A Special Kodak	4.00
No. 3 Special Kodak	4.00
No. 3A Special Kodak	4.25



The Panoram Kodaks

THE Panoram Kodak does a special kind of work—a very desirable kind of work which cannot be done with a camera of any other type.

As its name implies, it is constructed so as to take panoramic pictures of outdoor groups, landscapes, mountain views, and the like.

Panoram Kodaks use the regular daylight loading N. C. Kodak film, they are carefully made, have genuine leather coverings and nickeled fittings.

The No. 1 has a scope of 112 degrees, while the No. 4 embraces an angle of 142 degrees. Panoram Kodaks cannot be used successfully indoors.

DETAILS For rectangular pictures, No. 1, $2\frac{1}{4} \times 7$ inches; No. 4, $3\frac{1}{2} \times 12$ inches. Capacity, No. 1, 6 exposures; No. 4, 4 exposures without reloading. Size of Kodak, No. 1, $3\frac{3}{8} \times 4\frac{1}{8} \times 7\frac{3}{8}$ inches; No. 4, $4\frac{1}{4} \times 5\frac{5}{8} \times 10\frac{1}{8}$ inches. Weight, No. 1, 24 ounces; No. 4, 2 pounds, 14 ounces. Lenses, specially selected as to quality and focal length. Shutter, Panoram. Two tripod sockets. Brilliant finder with hood. No. 1 uses No. 1 F. P. Kodak; No. 4, No. 4 B. E. Film Cartridges.

PRICES

	No. 1	No. 4
Panoram Kodak	\$10.00	\$20.00
Black Sole Leather Carrying Case, with shoulder strap.	2.50	3.00
N. C. Film Cartridge, No. 1, 6 exposures, $2\frac{1}{4} \times 7$ (No. 105); No. 4, 4 exposures, $3\frac{1}{2} \times 12$ (No. 103)40	.75
Ditto, 3 exposures20	
Ditto, 2 exposures45

The Box Brownies

THAT the Brownie idea of simplicity and reliability combined in an inexpensive camera, has stood the test of years, is proven by the thousands of Brownie enthusiasts all over the world, who are making perfectly satisfactory pictures with them.

While they are especially popular among children on account of their simplicity, the fact they are so practical has caused them to be taken up by adults who wish to make pictures easily and at the minimum of expense.



Nos. 0 and 2 Brownies

The No. 0 Brownie makes the popular Vest Pocket size pictures, $1\frac{5}{8} \times 2\frac{1}{2}$ inches, and the No. 2, $2\frac{1}{4} \times 3\frac{1}{4}$ pictures. Both cameras are accurate, reliable, efficient and economical to operate and anybody can make good pictures with them from the start. They have the automatic shutter for snap-shots and time exposures; the No. 0 with one stop and No. 2 with three stops.

Each has carefully tested meniscus lens and view finders, for vertical and horizontal exposures.

DETAILS Nos. 0 and 2 Brownies. For rectangular pictures, No. 0, $1\frac{5}{8} \times 2\frac{1}{2}$ inches; No. 2, $2\frac{1}{4} \times 3\frac{1}{4}$ inches. Capacity, No. 0, 8 exposures; No. 2, 6 exposures without reloading. Size of camera, No. 0, $2\frac{5}{8} \times 3\frac{3}{8} \times 4\frac{1}{8}$ inches; No. 2, $3\frac{1}{4} \times 4 \times 5\frac{5}{8}$ inches. Weight, No. 0, 8 ounces; No. 2, 13 ounces. Lenses, meniscus. Shutters, Eastman Rotary. Two finders.

Nos. 2A and 3 Brownies

All the box Brownies are fixed focus and consequently anyone can, with reasonable care, make excellent pictures with them. The No. 2A makes pictures $2\frac{1}{2} \times 4\frac{1}{4}$ inches, while the No. 3 makes $3\frac{1}{4} \times 4\frac{1}{4}$ pictures. Each has carefully tested meniscus achromatic lens, Eastman Rotary Shutter with three stops, two view finders, and the No. 3 is supplied with two tripod sockets. Both cameras are covered with durable imitation leather covering, with metal parts nickered, and have the daylight-all-the-way feature of the Kodaks.

By the addition of a Kodak Portrait Attachment these cameras can be used with excellent success in home portraiture.

DETAILS Nos. 2A and 3 Brownies. For rectangular pictures, No. 2A, $2\frac{1}{2} \times 4\frac{1}{4}$ inches; No. 3, $3\frac{1}{4} \times 4\frac{1}{4}$ inches. Capacity, 12 exposures without reloading. Size of camera, No. 2A, $3\frac{7}{8} \times 5\frac{1}{8} \times 6\frac{1}{8}$ inches; No. 3, $4\frac{3}{8} \times 5\frac{1}{8} \times 6\frac{1}{8}$ inches. Weight, No. 2A, 21 ounces; No. 3, 24 ounces. Lenses, meniscus achromatic. Shutters, Eastman Rotary with three stops. Two finders.

PRICES

	No. 0	No. 2	No. 2A	No. 3
Nos. 0 and 2 Brownie Cameras, meniscus lenses, Eastman Rotary shutters	\$1.25	\$2.00		
Nos. 2A and 3 Brownie Cameras, meniscus achromatic lenses, Eastman Rotary shutters			\$3.00	\$4.00
Brownie Carrying Case50	.75	.75	1.00
N. C. Film Cartridge, 8 exposures, $1\frac{3}{8} \times 2\frac{1}{2}$ (No. 127) for No. 020			
Ditto, 6 exposures, $2\frac{1}{4} \times 3\frac{1}{4}$ (No. 120) for No. 220		
Ditto, 12 exposures, $2\frac{1}{2} \times 4\frac{1}{4}$ (No. 113) for No. 2A; $3\frac{1}{4} \times 4\frac{1}{4}$ (No. 124) for No. 350	.70
Ditto, 6 exposures25	.35
Kodak Portrait Attachment. (See page 45)50	.50	.50	.50
Developing and Printing Outfit. (See page 46)90	1.50	1.50	1.50

No. 2 Folding Autographic Brownie



THE No. 2 Folding Brownie has taken on a new form, and while retaining all the Brownie simplicity of operation, is a long step ahead in compactness and efficiency, and in addition, is equipped with the Autographic feature, which has become so popular with the Folding Kodaks.

Loads in daylight with Autographic Film Cartridges of six exposures. Fitted with meniscus achromatic or Rapid Rectilinear lens as desired. Has Kodak Ball Bearing shutter with variable snapshot speeds of $\frac{1}{25}$ and $\frac{1}{30}$ of a second; also time and "bulb" actions and is equipped with Kodak Autotime Scale.

Has reversible finder, automatic focusing lock, two tripod sockets; is made of metal, covered with a fine imitation leather; is well made and carefully finished in every detail.

DETAILS For rectangular pictures, $2\frac{1}{4} \times 3\frac{1}{4}$ inches. Capacity, 6 exposures without reloading. Size of camera, $1\frac{1}{4} \times 3\frac{1}{8} \times 6\frac{1}{2}$ inches. Weight, 19 ounces. Lens, meniscus achromatic, $3\frac{1}{2}$ -inch focus. Also supplied with Rapid Rectilinear lens, if desired. Shutter, Kodak Ball Bearing, equipped with Kodak Autotime Scale. Reversible finder, two tripod sockets, automatic focusing lock, black leather bellows.

PRICE

No. 2 Folding Autographic Brownie, meniscus achromatic lens and Kodak Ball Bearing shutter	\$6.00
Ditto, with Rapid Rectilinear lens, speed $f/8$	7.50
Carrying Case for No. 2 Folding Autographic Brownie90
Autographic Film Cartridge, 6 exposures, $2\frac{1}{4} \times 3\frac{1}{4}$ (No. A 120)20
Ditto, 2 exposures10
Kodak Portrait Attachment. (See page 45)50

No. 2A Folding Autographic Brownie



THE No. 2A Folding Brownie, has been made smaller, more compact and efficient, but still retains

all the simplicity and dependability that has characterized the Folding Brownie line in the past. This thoroughly reliable little camera is well made, and like the No. 2, possesses the Autographic feature permitting the writing of date and title on each negative at the time of exposure.

The camera loads with twelve, six or two-exposure Autographic Film Cartridges and has the Kodak Ball Bearing shutter, working at variable indicated speeds of $\frac{1}{25}$, $\frac{1}{30}$ and $\frac{1}{100}$ of a second, as well as the time and "bulb" actions. The camera has automatic focusing lock; is made of metal, covered with fine imitation leather, bellows of black leather and nickel and black enamel fittings.

DETAILS For rectangular pictures, $2\frac{1}{2} \times 4\frac{1}{4}$ inches. Capacity, 12 exposures without reloading. Size of camera, $1\frac{5}{8} \times 3\frac{3}{8} \times 7\frac{3}{8}$ inches. Weight, 25 ounces. Lens, meniscus achromatic, $4\frac{1}{4}$ -inch focus. Also supplied with Rapid Rectilinear lens if desired. Shutter, Kodak Ball Bearing, equipped with Kodak Autotime Scale. Reversible finder, two tripod sockets, automatic focusing lock, black leather bellows.

PRICE

No. 2A Folding Autographic Brownie, meniscus achromatic lens and Kodak Ball Bearing shutter	\$8.00
Ditto, with Rapid Rectilinear lens	10.00
Carrying Case for No. 2A Folding Autographic Brownie	1.00
Autographic Film Cartridge, 12 exposures, $2\frac{1}{2} \times 4\frac{1}{4}$ (No. A 116)50
Ditto, 6 exposures25
Ditto, 2 exposures12
Kodak Portrait Attachment. (See page 45)50

No. 2C Folding Autographic Brownie



JUST as the 3A size—that is, $3\frac{1}{4} \times 5\frac{1}{2}$ inches—has displaced the once popular 4×5 size, so it is anticipated that the new No. 2C, making pictures $2\frac{7}{8} \times 4\frac{7}{8}$ inches, will displace the $3\frac{1}{4} \times 4\frac{1}{4}$ size. The somewhat elongated shape of the No. 2C size gives more picture for the area; fits the view better for a horizontal landscape, and is, as well, a far better shape for photographing a single figure or a high building. The proportions of the picture are not only better, but the longer, narrower, thinner camera fits the pocket better.

The new No. 2C Folding Autographic Brownie is built along the lines of the same extreme simplicity as are the Nos. 2 and 2A Brownies, and its operation is so simplified as to make the taking of good pictures a matter of course.

It is small in size, neat in appearance, has a fine quality meniscus achromatic lens, or, if desired, the Rapid Rectilinear lens. The camera loads in daylight with ten, six or two-exposure Autographic Film Cartridges (No. A 130), and has the Kodak Ball Bearing shutter, with both cable and finger release, and snapshot speeds of $\frac{1}{25}$, $\frac{1}{50}$ and $\frac{1}{100}$ of a second, as well as the usual time and "bulb" actions. The camera has a very simple loading device and possesses the autographic feature for the recording of data on the film.

An automatic focusing lock permits the quick focusing of objects at any distance. The camera is made of metal, covered with durable imitation leather, has black leather bellows and nickel and black enamel fittings.



The No. 2C Folding Autographic Brownie is exceedingly compact for a camera making $2\frac{3}{8} \times 4\frac{7}{8}$ pictures, although nothing has been sacrificed in length of focus of lens or efficiency of shutter in order to reduce the size.

DETAILS For rectangular pictures, $2\frac{3}{8} \times 4\frac{7}{8}$ inches. Capacity, 10 exposures without reloading. Size of camera, $1\frac{3}{4} \times 3\frac{3}{4} \times 8\frac{1}{8}$ inches. Weight, 25 ounces. Lens, meniscus achromatic, $4\frac{3}{4}$ -inch focus. Also supplied with Rapid Rectilinear lens, if desired. Shutter, Kodak Ball Bearing, equipped with Kodak Autotime Scale. Reversible finder, two tripod sockets, automatic focusing lock, black leather bellows.

PRICE

No. 2C Folding Autographic Brownie, meniscus achromatic lens, and Kodak Ball Bearing shutter	\$9.00
Ditto, with Rapid Rectilinear lens	11.00
Carrying case for No. 2C Folding Autographic Brownie	1.00
Autographic Film Cartridges, 10 exposures, $2\frac{3}{8} \times 4\frac{7}{8}$ (No. A 130) . .	.60
Ditto, 6 exposures35
Ditto, 2 exposures15
Kodak Portrait Attachment50

No. 3A Folding Autographic Brownie



WHILE retaining all the characteristic simplicity of the Brownies, the 3A is, in its present form, a long step ahead in compactness, utility and efficiency. It is autographic, has round ends and the changes that have brought about greater efficiency and compactness in the other Folding Brownies, have been applied to this new model.

The No. 3A Folding Autographic Brownie is sure to please those who desire pictures of the post-card ($3\frac{1}{4} \times 5\frac{1}{2}$) size. It has about one-half the bulk of the former model and with the new round ends, like the Kodaks, will slip into the pocket without difficulty.

The camera is cleverly constructed, quick to operate and may be loaded almost instantly. It is well made throughout, and like

the other Folding Brownies possesses the autographic feature for the recording of data on each negative at the time of exposure.

It has a fine quality meniscus achromatic lens, or if desired, will be equipped with Rapid Rectilinear lens. The shutter is the new Brownie Ball Bearing with cable release; has time and "bulb" actions and snap-shot speeds of $\frac{1}{25}$, $\frac{1}{30}$ and $\frac{1}{100}$ of a second, and is supplied with Kodak Autotime Scale as an aid to correct exposure.

The camera loads in daylight with ten, six or two-exposure Autographic Film Cartridges (No. A 122); has an automatic focusing lock which permits the quick focusing of objects at any distance. Has reversible finder, two tripod sockets, carrying handle; is constructed of metal, covered with a fine quality imitation leather, bellows of black leather, nickel and black enamel fittings and is carefully made and finished throughout.



The No. 3A Folding Autographic Brownie is so simple to operate that anyone, without experience, can secure good results with it, from the very start.

(READY ABOUT JULY 1st)

DETAILS For rectangular pictures, $3\frac{1}{4} \times 5\frac{1}{2}$ inches. Capacity, 10 exposures without reloading. Size of camera, $1\frac{1}{8} \times 4\frac{5}{8} \times 9\frac{5}{8}$ inches. Weight, 38 ounces. Lens, meniscus achromatic. Also supplied with Rapid Rectilinear lens if desired. Shutter, Brownie Ball Bearing with cable release, also equipped with Kodak Autotime Scale. Reversible finder, two tripod sockets, automatic focusing lock, black leather bellows.

PRICE

No. 3A Folding Autographic Brownie, meniscus achromatic lens and Brownie Ball Bearing shutter	\$10.00
Ditto, with Rapid Rectilinear lens	12.00
Carrying Case for No. 3A Folding Autographic Brownie	1.00
Autographic Film Cartridge, 10 exposures, $3\frac{1}{4} \times 5\frac{1}{2}$ (No. A 122)70
Ditto, 6 exposures40
Ditto, 2 exposures20
Kodak Portrait Attachment. (See page 45)50

Compur Shutter

The Compur is one of the best and most accurate shutters for hand camera use. It works automatically for both "bulb" and time actions and graduated speeds, $\frac{1}{250}$ of a second, with wonderful star shape, giving illumination during the exposure. Has both release and iris operates for the from one second to The leaves working precision, open in complete illumination entire period of cable and finger diaphragm stops. regularly supplied



The Compur is on the Nos. 1A and 3 Autographic Kodaks, *Special*.

The shutter is finished in black enamel with white engraving; the diaphragm markings are on the upper rim and may be easily read when the camera is held in a position for making the exposure.

Optimo Shutter

The Optimo shutter is supplied with the Nos. 1 and 3A Autographic Kodaks, *Special*; is thoroughly reliable, has remarkable precision and sufficient speed to photograph rapidly moving objects.

Its five leaves revolve in making the exposure, opening and closing in a star-shaped aperture.

The Optimo has in addition to the "bulb" and time actions, variable speeds from one second to $\frac{1}{300}$ of a second. It is of the setting type and works accurately without jar by either cable or finger release.



After a season's experience with this shutter, we have found it to be unusually accurate and reliable.

The shutter is finished in black enamel with gold engraving.

The Kodak Anastigmats, *f.* 6.3 and *f.* 7.7

CARE in the selection of the type of lens, followed by careful testing and inspection of each individual lens, has been one of the contributory causes of Kodak success.

Both in the simple achromatic and in the more powerful Rapid Rectilinears we have maintained a high standard. We nevertheless long ago appreciated the advantages of the faster and more highly corrected anastigmats, and that their more general use would mean better pictures and therefore a still greater popularity for photography. But price stood in the way. The problem was to make a lens of the highest quality at a moderate cost. We solved that problem in the Kodak Anastigmats. Their success is due to the fact that they are made for a specific purpose and fulfill it.

As a rule, anastigmat lenses are made to serve a dual purpose. The lens that is to cover, say a 4 x 5 plate, at its largest opening is intended also for a 5 x 7 plate as a wide angle lens when used with a smaller stop. It is, therefore, corrected to hit the "happy medium" and serve both purposes.

The Kodak Anastigmats have no such handicap. They are corrected to cover only the particular Kodak size for which they are listed. No consideration has to be given to anything else, because nothing else is likely to be asked of them.

The result is that they give the utmost in efficiency for the specific purpose for which they are designed—and we are able to make and sell them at a lower price than the dual purpose lenses.

Our *f.* 7.7 and *f.* 6.9 anastigmats, as their markings indicate, give somewhat more speed than the best rectilinear lenses. In quality—depth, definition (sharpness) and flatness of field—they equal the best anastigmats made. Our Kodak Anastigmats, *f.* 6.3 have *both* quality and speed.

For Kodak use you cannot get better lenses at any price.

No. 2 Brownie Developing Box

THE Brownie Developing Box is a simplified and modified form of the Kodak Film Tank, offering the same assurance of perfectly developed film, and at the same time is so simple that any boy or girl can readily understand and operate it.

It consists of a metal box with cover, just long enough to accommodate a roll of No. 1 or No. 2 Brownie Film in one loop.

To develop, the roll of film is inserted in the spool carrier, and by means of a cord and winding shaft the film is unrolled and carried around a roller bearing, thus exposing the film to the action of the developer.

Before unrolling the film, the developer is poured in the box and the cover put in place; all these operations being performed in daylight. The film is then unrolled by turning the crank, when the box is rocked on its standard for six minutes. The developer is then poured off and box filled with water to wash out developer, after which film is removed and fixed in daylight.

It provides an excellent means for those who have No. 1 or No. 2 Brownie Cameras, of developing their films simply and accurately.

PRICE

No. 2 Brownie Developing Box	\$1.25
Brownie Developing Box Powders, per package of 615
Kodak Acid Fixing Powders, ½-pound package15
Ditto, ¼-pound package10





Kodak Film Tank

THE Kodak Film Tank automatically develops every roll of film put into it, just as well as that roll of film could be developed by the most experienced photographer. If directions are followed, if the chemicals are mixed and the temperature regulated according to instructions, a boy or girl can get just as good results from the Kodak Film Tank as can an expert by any method.

In other words, every roll of film put into the film tank, where the simple directions are implicitly followed, will come out developed as well, or better, than that roll of film could be developed in the dark room by the most experienced photographer. And it is very simple, it eliminates the dark room entirely, developing the film in broad daylight, and is so compact as to be easily carried and used anywhere.

The Kodak Film Tank consists of a winding box, a light-proof apron, and a heavily nicked brass solution cup with cover. In the Brownie Film Tank, however, no cover is necessary as the film roll itself is turned. All articles can be packed in the box, making the entire outfit self-contained.

The film to be developed is placed upon a reel in the winding box, the cover is placed on the box and the film is wound around an axis in combination with the apron, in such fashion that, when completely wound, the apron protects the film effectually from light, and may be removed from the winding box safely at any time. It is then lowered into the cup of developer, the cover attached and the film left to develop for twenty minutes. After development the film is removed for fixing.

Every step is performed in daylight and the exact time necessary for development, in combination with the chemical formula, has been scientifically worked out, so that all differences of exposure within reasonable bounds are taken care of. Especial attention is called to the 3½-inch size, for the development of the new 2C size films.

Those who wish to develop more than one roll at a time can do so without purchasing extra tanks complete, by securing duplicating outfits as listed below.

PRICES

Brownie Kodak Film Tank, for use with No. 1, No. 2 and No. 2 Folding Pocket Brownie cartridges, complete	\$2.75
Cover for same25
Vest Pocket Kodak Film Tank, for Vest Pocket cartridges, complete	2.75
2½-inch Kodak Film Tank, for use with all Kodak or Brownie cartridges having a film width of 2½ inches or less, complete	4.00
3½-inch Kodak Film Tank, for use with all Kodak and Brownie cartridges having a film width of 3½ inches or less, complete	5.50
5-inch Kodak Film Tank, for use with all Kodak and Brownie cartridges having a film width of 5 inches or less, complete	6.50
7-inch Kodak Film Tank, for use with No. 5 Cartridge Kodak or shorter film cartridges, complete	8.00
Duplicating Outfit, consisting of one solution cup, one transferring reel, and one apron, for Brownie Kodak Film Tank	1.40
Ditto, for Vest Pocket Film Tank	1.40
Ditto, for 2½-inch Kodak Film Tank	2.00
Ditto, for 3½-inch Kodak Film Tank	2.75
Ditto, for 5-inch Kodak Film Tank	3.25
Ditto, for 7-inch Kodak Film Tank	4.00
Flexible Rubber Tray, for 3½-inch Kodak Film Tank	1.40
* Kodak Tank Developer Powders for Brownie Kodak Film Tank, per package, ½ dozen15
Ditto, for Vest Pocket Tank15
Ditto, for 2½-inch tank, per package, ½ dozen20
Ditto, for 3½-inch tank, per package, ½ dozen20
Ditto, for 5-inch tank, per package, ½ dozen25
Ditto, for 7-inch tank, per package, ½ dozen25
* Kodak Acid Fixing Powder, per ¼-pound package10
Ditto, per ½-pound package15
Ditto, per 1-pound package25

* Prices subject to change without notice.

Eastman Plate Tank



WHAT the film tank has done for films, the plate tank does for plates. The idea of the two tanks is based upon the same time and temperature system of development, with, of course, such differences in actual construction of the tanks as are required by the physical differences between films and plates. And as plates must be unloaded in a dark room, the plate tank cannot offer the advantage of daylight quite all the way, but it takes only a few moments in the dark room to load this tank, after which it may be brought out into any light for development.

The device consists of a metal solution cup with cover, a cage for holding 12 or less plates, and a loading fixture for loading the plates in the cage.

The exposed plates are loaded into the cage and placed in the tank, which has been filled with developer, in the dark room and the tank cover fastened in place. On the front of the tank is a dial for registering time. Development is allowed to continue for fifteen minutes, the tank being reversed several times. After development the developer is washed out of the plates, and the fixing bath poured into the tank, after which the plates are ready for washing in the usual manner.

PRICE

Eastman Plate Tank, for 4 x 5, 3 1/4 x 5 1/2, and smaller plates, includes solution cup, plate cage, loading fixture and adjustable kit	\$4.00
Ditto, 5 x 7, without kit	5.00
Adjustable Kit, for 4 x 5 or 3 1/4 x 5 1/2 tank, to take smaller plates50
Separate Kits, for 5 x 7 tank, to take 3 1/4 x 5 1/2, 4 1/4 x 6 1/2 or 4 1/4 x 6 1/2 plates, each75
Metal Insert, for 5 x 7 tank, to take 4 x 5 plates10
* Eastman Plate Tank Developer Powders, for 4 x 5 tank, per package, 1/2 dozen20
Ditto, for 5 x 7 tank, per package, 1/2 dozen35
* Kodak Acid Fixing Powder, per 1-pound package25
Ditto, per 1/2-pound package,15

* Prices subject to change without notice.

Brownie Enlarging Camera



THE Brownie Enlarging Camera is simplicity itself. It's just a light-tight cone, made in two sections, with an attachment at the small end to hold the negative, and another at the large end for the paper. The lens is supported between negative and paper at just the proper focal distance.

To make an enlargement, one merely places the negative and paper in place, sets up the camera with the negative end to the light for a specified time and then develops the paper as usual. Any school boy can make first-rate enlargements with a Brownie Enlarging Camera.

The cameras are collapsible, so that they fold flat and may be conveniently carried in a suitcase.

PRICE

No. 2. Brownie Post-card Enlarging Camera, for $3\frac{1}{4} \times 5\frac{1}{2}$ enlargements from $2\frac{1}{4} \times 3\frac{1}{4}$ negatives	\$1.75
No. 2. Brownie Enlarging Camera, for 5×7 enlargements from $2\frac{1}{4} \times 3\frac{1}{4}$ negatives	2.00
No. 3. Ditto, for $6\frac{1}{2} \times 8\frac{1}{2}$ enlargements from $3\frac{1}{4} \times 4\frac{1}{4}$ negatives	3.00
No. 4. Ditto, for 8×10 , $6\frac{1}{8} \times 9\frac{3}{4}$ and $5\frac{3}{8} \times 9\frac{3}{8}$ enlargements from 4×5 , $3\frac{1}{4} \times 5\frac{1}{2}$ and $2\frac{7}{8} \times 4\frac{7}{8}$ negatives respectively	4.00

V. P. Kodak Enlarging Camera

This is made upon the same principle as the Brownie Enlarging Camera, excepting that being small in itself, it is not made collapsible and is in one section only.

It offers the simplest means for making $3\frac{1}{4} \times 5\frac{1}{2}$ enlargements from $1\frac{5}{8} \times 2\frac{1}{2}$ negatives.

PRICE

Vest Pocket Kodak Enlarging Camera	\$1.75
--	--------

Brownie Enlarging Camera Illuminator

In enlarging with the Brownie or Vest Pocket Enlarging Camera, the exposure may be made by daylight, but the Illuminator will be found a great convenience for anyone who has electricity available.

It is a collapsible half-round light-proof box supplied with lamp socket and opal glass window. May be used as a dark-room lamp, if desired.

Brownie Enlarging Camera Illuminator, \$3.00

Kodak Portrait Attachment



THERE are so many ways in which one can use a Kodak Portrait Attachment with a Kodak or Brownie Camera, that it is almost an indispensable accessory. They are not only serviceable for making portraits, but also for photographing any small object, such as flowers, fruits, in fact, any composition, at close range. Subjects that with the regular lens equipment appear too small in the picture to be satisfactory, can, with the Kodak Portrait Attachment, be shown much larger.

One can work up close to the subject and thereby secure bust portraits as large as the size of the negative will permit. The attachment is simply an extra lens, which fits over the barrel of the regular lens. This does not alter the exposure nor affect the operation of the instrument in any way, except to make the lens cut sharply when close to the subject, thereby giving a larger image.

Please order by number, or if required for older models or cameras with special equipments, specify shutter and size of camera.



MADE WITH KODAK AND KODAK
PORTRAIT ATTACHMENT

Prices—Kodak Portrait Attachments

No. 1. For Nos. 0 and 2 Brownies, No. 2 Folding Autographic Brownie with single lens, Vest Pocket and Nos. 1 and 1A Folding Pocket Kodaks and Nos. 2 and 2A F. P. Brownies	\$0.50
No. 2. For No. 2A Brownie	.50
No. 3. For No. 1A Autographic Kodak Junior, Nos. 1A and 3 Autographic Kodaks, No. 2A Folding Autographic Brownie, both single and double lens, No. 3 Folding Brownie and No. 1 Kodak Junior with Kodak Anastigmat, <i>f. 7.7</i> lens	.50
No. 4. For No. 2 and No. 3 Bull's-Eye, No. 3 Brownie	.50
No. 5. For No. 2C Autographic Kodak Junior, both single and double lens, Nos. 2C and 3A Folding Autographic Brownies, and Nos. 3A Autographic Kodak, 4 and 4A Folding Kodaks	.50
No. 6. For Nos. 1A and 3 Autographic Kodaks, <i>Special</i> , and Nos. 1A and 3 Autographic Kodaks with Kodak Anastigmat, <i>f. 7.7</i> lens, and No. 1 Autographic Kodak, <i>Special</i>	.50
No. 7. For No. 3A Autographic Kodak, <i>Special</i> , and No. 3A Autographic Kodak and No. 2C Junior with Kodak Anastigmat lens, <i>f. 7.7</i>	.50
No. 8. For No. 1 Autographic Kodak Junior, both single and double lens, Vest Pocket Autographic Kodak, <i>Special</i> , and No. 2 Folding Autographic Brownie with double lens	.50
No. 9. For Nos. 1A and 3 Autographic Kodaks with Kodak Automatic shutter	.50
No. 10. For No. 1 Brownie	.50

Kodak Sky Filters and Color Filters

The Sky Filter is intended to equalize the great difference of light between the sky and foreground in landscape photography. Only the upper half of the filter is stained a yellow color to relieve the brightness from the sky, while the lower half of the filter being colorless, permits a normal exposure for the foreground.

Kodak Sky Filters are mounted in the same manner as Kodak Portrait Attachments.

The Kodak Color Filters are of great value in outdoor photography, and for all subjects embracing colors which act weakly on the sensitive film, as they hold back the strong blue and violet rays, affording the weaker colors time to record. The Kodak Color Filters are mounted in the same manner as the Kodak Portrait Attachment.

Prices—Kodak Sky Filters and Color Filters

No. 1. For Vest Pocket, Nos. 1 and 1A Folding Pocket Kodaks, No. 0 and 2 Brownies, No. 2 Folding Autographic Brownie with single lens, and Nos. 2 and 2A F. P. Brownies	\$0.50
No. 2. For No. 2A Brownie	.50
No. 3. For No. 1A Autographic Kodak Junior, Nos. 1A and 3 Autographic Kodaks, No. 2A Folding Autographic Brownie, both single and double lens, No. 3 Folding Brownie and No. 1 Kodak Junior with Kodak Anastigmat, <i>f. 7.7</i> lens	.75
No. 4. For Nos. 2 and 3 Bull's-Eye and No. 3 Brownie	.75
No. 5. For No. 2C Autographic Kodak Junior, both single and double lens, Nos. 2C and 3A Folding Autographic Brownies, Nos. 3A Autographic Kodak, 4 and 4A Kodaks	1.00
No. 6. For Nos. 1A and 3 Autographic Kodaks, <i>Special</i> , Nos. 1A and 3 Autographic Kodaks with Kodak Anastigmat, <i>f. 7.7</i> lens, and No. 1 Autographic Kodak, <i>Special</i>	.75
No. 7. For No. 3A Autographic Kodak, <i>Special</i> , and Nos. 3A Autographic Kodak and 2C Junior with Kodak Anastigmat, <i>f. 7.7</i> lens	1.00
No. 8. For No. 1 Autographic Kodak Junior, both single and double lens, Vest Pocket Autographic Kodak, <i>Special</i> , and No. 2 Folding Autographic Brownie with double lens	.50
No. 9. For Nos. 1A and 3 Autographic Kodaks with Kodak Automatic shutter	.50

Developing and Printing Outfits

FOR those who wish to develop by the dark room method we offer complete developing and printing outfits containing everything necessary for the work. By combining a variety of different articles and making up the outfits in large quantities, we furnish them at a much lower price than if the articles were purchased separately. The Eastman 3A Outfit contains every requisite for finishing twenty-four $3\frac{1}{4} \times 5\frac{1}{2}$ or smaller pictures, and includes the following:

One Kodak Candle Lamp	\$0.25
One Printing Frame25
One Glass for Frame05
One 4-ounce Graduate15
One Stirring Rod05
Four Developing Trays40
Five tubes Eastman Special Developer25
One-half pound Kodak Acid Fixing Powder15
One package Potassium Bromide10
Two dozen $3\frac{1}{4} \times 5\frac{1}{2}$ Velox Paper30
Two ounces Nepera Solution for developing Velox10
Instruction Book (free)	

Eastman 3A Outfit, complete, neatly packed, \$1.50 \$2.05

EASTMAN A B C OUTFIT, similar to above but providing for 4 x 5 or smaller pictures \$1.50

No. 0 BROWNIE Developing and Printing Outfit, complete, for developing and printing 24 pictures $1\frac{3}{8} \times 2\frac{1}{2}$. Price, complete .90



The Kodak Amateur Printer

THE Kodak Amateur Printer enables the amateur to make any number of uniformly masked prints from the same negative—and quickly—with Velox or any developing-out paper. The Printer consists of a box with a removable top, and in it a glass window through which the printing is done. Prints may be made with white margins, any size from $1\frac{3}{8} \times 2\frac{1}{2}$ to $4 \times 5\frac{1}{2}$ inches, by a simple automatic masking device which holds the negative firmly until released. Within the box is a small red electric bulb to permit the adjustment of negative and paper, and provision is made for a 60 Watt Mazda lamp, which is automatically

turned on when the hinged frame is closed to make the exposure.

In the side of the box is a removable window, covered with red and orange paper, serving as a dark-room lamp.

It is supplied complete, without lamp, but including $5\frac{1}{2}$ feet of electric light cord and socket.

PRICE

The Kodak Amateur Printer . \$6.00



Velox Paper

Velox is the paper for amateur use because it is made with sole reference to the requirements of the amateur. It is simple to use, thoroughly dependable and is made in a variety of grades and surfaces to fit all sorts of amateur negatives.

It prints in any light, requires no dark room and permits the amateur to utilize his evening hours in print making. Its simplicity of manipulation and extreme gradation make it suitable for photographic work of every kind.

Velox is divided broadly into three kinds of paper, called "Contrast," "Regular" and "Special," each division containing

a variety of surfaces. "Contrast" and "Regular" papers develop quickly and are best suited for negatives lacking contrast. "Special" papers develop slowly, and give soft effects from hard negatives.

Velox "Contrast" is made in Carbon (matte) single weight and Velvet (semi-gloss) both single and double weight. Contrast Velox will secure the best possible results from extremely thin, or from dense flat negatives.

Velox "Regular" has the following surfaces: Carbon (matte), Glossy, Glossy double weight, Velvet, Velvet double weight. Velvet is recommended for very flat negatives and gives semi-gloss prints of exceptional quality.

In the "Special" class, the surfaces are Carbon (matte), Portrait (smooth matte), Portrait double weight, Rough, Glossy, Glossy double weight, Velvet, and Velvet double weight. Special Velvet Velox has a greater range than any of the other "Special" papers.

Royal Velox is coated on an India tint stock in "Regular" and "Special," in one surface, and just rough enough to produce soft mellow-tinted prints.

PRICE

Size	Single Weight			Double Weight		
	Dozen	½ Gross	Gross	Dozen	½ Gross	Gross
1½ x 2½	\$0.10	\$0.60	\$1.00	\$0.15	\$0.75	\$1.25
2¼ x 3¼	.10	.60	1.00	.15	.75	1.25
2½ x 4¼	.12	.70	1.25	.18	.90	1.55
3½ x 3½	.15	.80	1.50	.20	1.00	1.90
3¼ x 4¼	.15	.80	1.50	.20	1.00	1.90
2½ x 4½	.15	.80	1.50	.20	1.00	1.90
3¼ x 5½	.15	.80	1.50	.20	1.00	1.90
4 x 5	.20	1.10	2.00	.25	1.40	2.50
†*3½ x 6½	.20	1.10	2.00			
2¼ x 7	.15	.80	1.50	.20	1.00	1.90
4¼ x 6½	.30	1.65	2.80	.40	2.05	3.50
5 x 7	.35	2.00	3.50	.45	2.50	4.40
3½ x 12	.45	2.50	4.50	.55	3.15	5.65
Velox Post-cards, 3½ x 5½, furnished in Regular Velvet, Special Velvet, Special Portrait, Regular Glossy, Special Glossy and Regular Royal and Special Royal20	1.10	2.00
Ditto, Double Post-cards, 3½ x 11 inches40	2.20	4.00
Brownie Post-cards, 2¼ x 4¼, Regular and Special Velvet15	.80	1.50

*Glossy only. †For use in Self-transposing Stereo Printing Frame.

Brownie Velox (one grade only)

2¼ x 2¼, per package, 2 dozen sheets	\$0.15
2¼ x 3¼, per package, 1 dozen sheets10

Velox Sundries

N. A. (Non-abrasion) Velox Liquid Developer, 4-ounce bottle (makes 20 ounces for Special, 12 ounces for Regular)	\$0.25
Ditto, 16-ounce bottle	.75
Nepera Solution, per 4-ounce bottle	.20
Ditto, per 16-ounce bottle	.60
Nepera Auxiliary Powders (for converting Nepera solution to a film or plate developer), per package 1 dozen	.15
Velox Re-developer for Sepia Tones, per 4-ounce bottle	.50
Ditto, 2 ounces (sufficient for 150 4 x 5 prints)	.30
Velox Re-developer Tubes, for sepia toning, per package 12 tubes	.60
Velox Liquid Hardener, per 4-ounce bottle	.15
Ditto, 8-ounce bottle	.25
Nepera M. Q. N. A. Tubes, box of 5 tubes	.75
Kodak N. A. M. Q. Developer, per package 3 tubes	.25
Kodak Acid Fixing Powder for fixing Velox prints, per pound	.25
Ditto, $\frac{1}{2}$ pound	.15
Ditto, $\frac{1}{4}$ pound	.10

Prices subject to change without notice

Kodak Velvet Green

Effects heretofore to be had only by the laborious carbon process can be secured by any amateur photographer with this paper.

For landscapes, for marines, and in fact, for the majority of outdoor amateur negatives, the rich green of prints on Kodak Velvet Green produces most beautiful harmonious effects, with an indescribable "atmosphere" of nature itself.

And to use this paper the amateur has to learn no new processes nor possess extraordinary skill. Anyone who can print on Velox paper can print just as successfully on Kodak Velvet Green, as the two processes after exposure are identical, and the developing solution is only slightly changed.

The surface—a smooth semi-matte—brings out detail fully, and the paper is supplied in both single and double weights.

Kodak Velvet Green Post-cards are very appropriate for use at vacation time.

Prices same as for Velox. (See page 49.)

Eastman "Ferro Prussiate" Paper

A "blue print" that retains delicacy and detail. In sealed tubes.

Size	2 Doz. Single Wt.	1 Doz. Double Wt.	Size	2 Doz. Single Wt.	1 Doz. Double Wt.
$2\frac{1}{2} \times 2\frac{1}{2}$	\$0.16	\$0.15	4 x 5	\$0.20	\$0.20
$2\frac{1}{4} \times 3\frac{1}{4}$.16	.15	$3\frac{1}{4} \times 5\frac{1}{2}$.20	.20
$2\frac{1}{2} \times 4\frac{1}{4}$.16	.15	$2\frac{1}{4} \times 7$.20	.20
$3\frac{1}{2} \times 3\frac{1}{2}$.16	.15	$4\frac{1}{4} \times 6\frac{1}{2}$.30	.25
$3\frac{1}{4} \times 4\frac{1}{4}$.16	.15	5 x 7	.35	.30
$2\frac{3}{8} \times 4\frac{3}{8}$.20	.20	$3\frac{1}{2} \times 12$.40	.35

Post-cards, 1 dozen, 15 cents

Eastman Permanent Bromide Papers

For enlargements. Grades: Velvet, Royal, Standard, Platino, Enameled and Matte-enameled.

Size	Per Doz.	Size	Per Doz.	Size	Per Doz.
5 x 7	\$0.35	8 x 10	\$0.80	14 x 17	\$2.40
5 x 8	.40	10 x 12	1.20	16 x 20	3.20
6½ x 8½	.60	11 x 14	1.60	18 x 22	4.00

Other sizes in proportion.

Solio Paper

A rapid, glossy, printing-out paper.

Size	Per Package, 2 Doz.	Size	Per Package, 2 Doz.
1½ x 2½	\$0.20	2¼ x 7 (No. 1 Panoram Kodak)	\$0.25
2¼ x 3¼	.20	Per Doz.	
2½ x 4¼	.20	4¼ x 6½	\$0.25
3½ x 3½	.20	5 x 7	.30
3¼ x 4¼	.20	3½ x 12 (No. 4 Panoram Kodak)	.35
2½ x 4½	.20	Post-cards	.15
3¼ x 5½	.25	Double Solio Post-cards	.30
4 x 5	.25	Brownie Post-cards, 2¼ x 4¼	.10

Solio Toning and Fixing Powders, per carton, 5 tubes, 25 cents. Solio Combined Toning and Fixing Solution, per 8-ounce bottle, 50 cents. Ditto, 4-ounce bottle, 30 cents; post-paid, 50 cents. Solio Hardener, per 8-ounce bottle, 35 cents.

Kodak Dry Mounting Tissue

Mounts prints even on thin mounts without curl. The simplest method of mounting, no apparatus being required—just fix the tissue on print, lay on mount and press with a warm flat iron; no sticky fingers, no muss of any kind.

PRICE

Size, 3½ x 3½, 3 dozen	\$0.08	Size, 4 x 5, 2 dozen	\$0.08
Size, 3¼ x 4¼, 3 dozen	.08	Size, 4¼ x 6½, 1 dozen	.08
Size, 3¼ x 5½, 2 dozen	.08	Size, 5 x 7, 1 dozen	.08

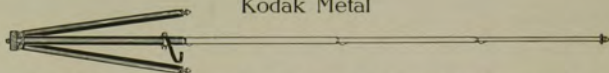
Glass Dry Plates

Size	Seed	Per Doz.	Size	Seed Non-Halation Ortho	Per Doz.
3½ x 3½		\$0.40	3¼ x 4¼		\$0.55
3¼ x 4¼		.45	3¼ x 5½		.80
3¼ x 5½		.65	4 x 5		.80
4 x 5		.65	4¼ x 6½		1.10
4¼ x 6½		.90	5 x 7		1.40
5 x 7		1.10	Cover Glass for Lantern Slides		.30
Lantern Slide Plates		.45			

Lantern Slide Binders, per package, 50 strips . . . \$0.10

Tripods

Kodak Metal



The Kodak Metal Tripods combine light-weight and compactness with exceptional rigidity and are ideal for cameras up to 5 x 7.

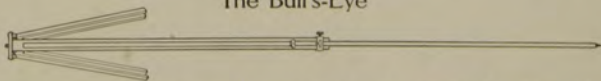
They have telescoping legs of brass tubing—lower ones nickeled—the upper black enameled. Should a part become inoperative through wear or accident, any section may be removed for repairs. This is a unique feature among metal tripods. When extended each section catches and holds firmly. To close, it is necessary to press in top catch only, the others then releasing automatically.

The Nos. 1 and 2 have revolving heads for attaching to camera. With this construction the camera may be swung, so as to take in the desired view without moving the tripod. The Nos. 1 and 2 also have straps for holding the legs in place when closed. The Nos. 1C and 2C have solid heads and are supplied without straps for holding the legs.

The new No. 6 has an improved folding head, permitting the legs to fold flat and may be carried easily in the ordinary coat pocket.

	Sections	Length		Weight	Price
		Closed	Extended		
Kodak Metal Tripod No. 0	3	15 ½ inches	39 ½ inches	15 ounces	\$2.00
Kodak Metal Tripod No. 1 C	4	15 ¼ inches	48 ¾ inches	25 ½ ounces	2.75
Kodak Metal Tripod No. 1	4	15 inches	48 ½ inches	24 ½ ounces	3.00
Kodak Metal Tripod No. 2 C	5	13 ¼ inches	49 ¾ inches	26 ounces	3.50
Kodak Metal Tripod No. 2	5	13 ½ inches	49 ½ inches	25 ounces	3.75
Kodak Metal Tripod No. 6	6	11 ¾ inches	40 inches	24 ounces	5.50
Leatherette Case, for No. 0 and No. 1					.75
Leather Carrying Case, for any style					1.75

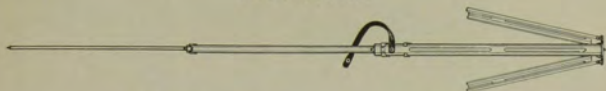
The Bull's-Eye



Two sections. Aluminum revolving head. Made of maple, with brass fittings. For 4 x 5 cameras, or smaller. Length, extended, 42 ½ inches; folded, 24 inches. The only two-section tripod that will go into a suitcase.

Price, \$1.50

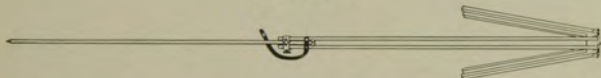
The Standard



The feature of this tripod is the automatic locking of the sections when they are extended. Light, compact and rigid. Fixed, non-detachable head. Length, folded, 21 inches; extended, 53½ inches. Weight, 18 ounces. Cherry finish, brass trimmings.

Price, \$1.75

The Flexo



Two sections. Fixed, non-detachable head. Only clear, straight-grained wood is used in its construction.

Price, \$0.90

Universal Tripod Head



This new Tripod Head is a simple and effective device which will fit any regular tripod socket. Has ball and socket, permitting camera to be tilted through an angle of 90 degrees, and is especially desirable when photographing objects at close quarters.

Universal Tripod Head . . . \$0.75

The Universal Clamp

The Universal Clamp is a small, convenient substitute for a tripod and may be attached to a chair, fence, automobile, or a motor cycle handle bar. It is so light and small as to be carried readily in the pocket, and fits any tripod socket.

Universal Clamp \$0.75



The Kodak Album



Made on a new principle, which does away with mounting prints by paste or otherwise. They are merely slipped into pocket strips at top and bottom, and will not come out unless removed by hand. Handsome grain leather cover and black leaves with linen finish.

A, 2¼ x 3¼, 25 leaves, 3 on	\$2.25	E, 3¼ x 5½, 50 leaves, 3 on	\$3.50
B, 2½ x 4¼, 25 leaves, 3 on	2.50	F, 4 x 5, 25 leaves, 2 on	2.60
C, 3¼ x 4½, 25 leaves, 3 on	2.50	G, 4¼ x 6½, 25 leaves, 2 on	2.75
D, 3¼ x 5½, 25 leaves, 3 on	2.75	H, 5 x 7, 25 leaves, 2 on	3.00

The Othello Album

This album has flexible covers of finest heavy black walrus leather, faced inside with silk finish black cloth, and has large pocket in back of the same material for holding loose prints.

Has expansion back held firmly by countersunk black-enamel screws; 50 jet black leaves of best quality and will hold 25 extra.

A, 5 x 8	\$2.40	B, 7 x 11	\$3.00	C, 8 x 10	\$3.10	D, 11 x 14	\$4.60
Pkg. 12 extra leaves12		.15		.15		.35

The Trojan Album

Made of finest quality flexible, embossed leather, with bronze finish and word "Photographs" stamped in gold leaf. Black silk cloth pocket for loose prints. Contains 50 jet black leaves of extra quality, held in place by cord inside of covers, making album loose-leaf.

A, 5 x 8	\$1.80	B, 7 x 11	\$2.35	C, 10 x 12	\$3.65	D, 11 x 14	\$4.25
Pkg. 12 extra leaves12		.15		.30		.35

The Cairo Album

Open back style, with flexible, tinted leather covers, and 50 black leaves of extra quality, held by silk cord through covers. Extra large capacity.

A, 5 x 8	\$1.60	B, 7 x 11	\$2.00	C, 10 x 12	\$3.25	D, 9 x 14	\$3.50
Pkg. 12 extra leaves12		.15		.30		.35

The Agrippa Album

A new, unusually flexible loose leaf album with beautiful grain leather covering and 50 linen finish black leaves.

A, 5 x 8	\$1.40	B, 7 x 11	\$1.70	C, 10 x 12	\$3.00	D, 9 x 14	\$3.30
Pkg. 12 extra leaves12		.15		.25		.30

The Tiber Album

A very flexible loose-leaf album with imitation leather covering and 50 black leaves.

A, 5 x 8	\$0.75	B, 7 x 11	\$1.00	C, 10 x 12	\$1.65	D, 9 x 14	\$1.90
Pkg. 12 extra leaves12		.15		.25		.30

The Hercules Album

This is one of the most attractive albums ever offered. The covers are flexible, of genuine leather in a new blended gray and black shade, with flap and clasps holding the album flat when filled.



Has large pocket for loose prints; is furnished with 50 black leaves bound inside of covers by silk cord.

A, 5 x 8	\$2.65	B, 7 x 11	\$3.25	C, 10 x 12	\$4.35	D, 9 x 14	\$5.00
Pkg. 12 extra leaves12		.15		.30		.35

The Thebes Album

Black seal grain flexible leather covers, word "Photographs" stamped in gold leaf, open back style; 50 black leaves held in place by silk cord drawn through metal tubes.

A, 5½ x 7	\$1.50	B, 7 x 10	\$1.90	C, 10 x 7	\$1.90	D, 8 x 10	\$2.10	E, 11 x 14	\$3.50
Pkg. 12 ex. leaves12		.15		.15		.15		.35

The Forum Album

Flexible, black leather embossed cloth cover.

A, 25 black leaves, or N, 25 Sepia leaves, 5½ x 7	\$0.40
B, 25 black leaves, or O, 25 Sepia leaves, 7 x 1055
C, 25 black leaves, or P, 25 Sepia leaves, 10 x 755
D, 25 black leaves, or R, 25 Sepia leaves, 11 x 14	1.25
E, 50 black leaves, 5½ x 755
F, 50 black leaves, 7 x 1085
G, 50 black leaves, 10 x 785
H, 50 black leaves, 11 x 14	1.50

The Apollo Album

Has black watered silk cloth cover, with large pocket in back cover for loose prints. Black leaves only.

A, 25 leaves, 5 x 8	\$0.50	E, 50 leaves, 5 x 8	\$0.70
B, 25 leaves, 7 x 1170	F, 50 leaves, 7 x 11	1.00
C, 25 leaves, 10 x 12	1.35	G, 50 leaves, 10 x 12	1.60
D, 25 leaves, 9 x 14	1.40	H, 50 leaves, 9 x 14	1.70

Artist's Album

Loose leaf system, silk lacing.

No. 1, black leaves; No. 2, white leaves;		No. 4, black leaves; No. 5, white leaves;	
No. 3, Sepia leaves, 5½ x 7	\$0.20	No. 6, Sepia leaves, 7 x 10	\$0.30
Extra leaves, package of 507	Extra leaves, package of 510

Souvenir Post-card Album

Flexible, black leather embossed cloth cover.

X, 25 black leaves, 10 x 7, for 100 cards	\$0.50
X, R, 25 black leaves, 11 x 14, for 200 cards	1.50
X, T, { Flexible, black grain leather cover }	2.50
{ 25 leaves, 11 x 14, for 200 cards }	

Eastman Film Negative Albums

For 100 negatives, 1½ x 2½	\$0.75
For 100 negatives, 2½ x 4¼, or smaller75
For 100 negatives, 3¼ x 4¼, or 4 x 5	1.00
For 100 negatives, 3¼ x 5½, or smaller	1.00
For 100 negatives, 5 x 7, or smaller	1.50

Kodak Card Mounts

Riviera—Ash Grey and White

For Prints	Size of Mount	Per 100	Per 50	For Prints	Size of Mount	Per 100	Per 50
1½ x 2	3 x 3½	\$0.35	\$0.50	2½ x 4½	4½ x 6½	\$0.80	\$0.40
1½ x 2½	3 x 3¾	.45	.25	3¼ x 4¼	4½ x 5½	.75	.40
2¼ x 2¼	3½ x 3½	.45	.25	4 x 5	5½ x 6½	.95	.50
2¼ x 3¼	3½ x 4½	.55	.30	3¼ x 5½	5 x 7¼	1.05	.55
2½ x 4¼	4½ x 5½	.75	.40	4¼ x 6½	5¼ x 8	1.55	.80
3½ x 3½	5 x 5	.75	.40	5 x 7	7 x 9	1.65	.85

Bevplane—Carbon Black and Scotch Grey

For Prints	Size of Mount	Per 100	Per 50	For Prints	Size of Mount	Per 100	Per 50
1½ x 2½	3¼ x 4¼	\$0.70	\$0.35	4 x 5	5½ x 6½	\$1.00	\$0.50
2¼ x 3¼	4 x 5	.70	.35	4¼ x 6½	5¼ x 8	1.70	.85
2½ x 4¼	4¼ x 6	.90	.45	5 x 7	7 x 9	1.90	.95
3½ x 3½	5 x 5	.90	.45	2¼ x 7	4 x 8½	1.00	.50
3¼ x 4¼	5 x 6	.95	.50	3½ x 12	5½ x 13¼	2.00	1.00
3¼ x 5½	4¼ x 7	1.00	.50				

The Marine—London Brown and Ash Grey

Good heavy stock, embossed corded silk pattern, beveled edges

No.	For Prints	Size of Mount	Per 100	Per 50	No.	For Prints	Size of Mount	Per 100	Per 50
0	1½ x 2½	3½ x 4½	\$0.85	\$0.45	3A	3¼ x 5½	5½ x 8	\$1.45	\$0.75
1	2¼ x 3¼	4½ x 5½	1.00	.50	4	4 x 5	6 x 7	1.35	.70
1A	2½ x 4¼	4½ x 6½	1.10	.55	4A	4¼ x 6½	6½ x 8¼	1.70	.85
2	3½ x 3½	5½ x 5½	1.10	.55	5	5 x 7	8 x 10	2.30	1.15
3	3¼ x 4¼	5½ x 6½	1.10	.55					

The Baltic—Buff, Brown or Grey

Heavy stock, beveled edge, heavy borders—a beautiful, rich mount

No.	For Prints	Size Outside	Per 100	Per 50	No.	For Prints	Size Outside	Per 100	Per 50
0	1½ x 2½	3½ x 4½	\$1.00	\$0.50	3	3¼ x 4¼	5½ x 6½	\$1.45	\$0.75
1	2¼ x 3¼	4½ x 5½	1.20	.60	3A	3¼ x 5½	5½ x 8	1.70	.85
1A	2½ x 4¼	4½ x 6½	1.35	.70	4	4 x 5	6 x 7	1.80	.90
2	3½ x 3½	5½ x 5½	1.35	.70	4A	4¼ x 6½	6½ x 8¼	2.40	1.20
2C	2½ x 4¼	5 x 7	1.55	.80	5	5 x 7	8 x 10	3.00	1.50

Inslip Enlargement Mount—Color, English Grey or Sepia-Buff

No.	For Prints	Size Outside	Price Per Doz.	No.	For Prints	Size Outside	Price Per Doz.
A	3¼ x 5½	7¼ x 9¼	\$0.55	E	5 x 8½	9½ x 13½	\$0.65
B	3½ x 5½	8½ x 9¼	.55	F	6½ x 8½	11½ x 13½	.67
C	4¼ x 6½	8½ x 10¼	.55	G	6 x 10	10½ x 14½	.72
D	5 x 7	9½ x 11½	.55	H	8 x 10	12½ x 14½	.90
Price Per Half Dozen							
J	10 x 12	15¼ x 17¼	\$0.90	L	8 x 14	14¼ x 20¼	\$0.67
K	7 x 12	12 x 17	.67	M	11 x 14	17¼ x 20¼	1.25

The Drimount—Color, English Grey or Sepia-Buff

No.	For Prints	Size Outside	Price Per Doz.	No.	For Prints	Size Outside	Price Per Doz.
A	3¼ x 5½	7¼ x 9½	\$0.25	E	5 x 8½	9¾ x 12¾	\$0.35
B	3¾ x 5½	7¾ x 9½	.25	F	6½ x 8½	11¾ x 13¾	.35
C	4¼ x 6½	8¼ x 10½	.26	G	6 x 10	10¾ x 14¾	.35
D	5 x 7	9½ x 11½	.26	H	8 x 10	12¾ x 14¾	.47
Price Per Half Dozen							
J	10 x 12	15 x 17	\$0.35	L	8 x 14	14 x 20	\$0.35
K	7 x 12	11¼ x 16¼	.35	M	11 x 14	17 x 20	.47

View Enlargement Mounts (Improved) Grey and Brown

No.	For Prints	Size Outside	Per 100	No.	For Prints	Size Outside	Per 100
A	5 x 7	8 x 10	\$2.65	C	8 x 10	12 x 14	\$4.60
B	6½ x 8½	10 x 12	3.80	D	7 x 11	11 x 15	5.25

Stereo Mounts

Size of mount, 3½ x 7; color, Queen's Grey; per 100, \$0.50; per 50 \$0.25

Souvenir Photo Case

A handsome brown embossed folder with watered silk finish lining, making an unusually rich setting for the display of a favorite picture. Attractive enough for the home; suitable for a busy man's desk.

Style	For Prints	Size Outside	Price
No. 0	1½ x 2½	2½ x 3¼	\$0.35
No. 1	2¼ x 3¼	3½ x 4	.40
No. 1A	2½ x 4¼	3½ x 5	.45
No. 3	3¼ x 4¼	4½ x 5	.45
No. 3A	3¼ x 5½	4½ x 6	.50

The Pocketfoto

In traveling, in calling upon friends, and the like, there are many times when you would like to show some of your best pictures. The Pocketfoto makes this a simple matter. It is a soft, handsome grain leather case, somewhat similar to a pocket bill case, which will easily accommodate twenty-five or more unmounted prints in either side, and folds so as to conveniently go into the pocket.

No. 1, for 2¼ x 3¼ or smaller pictures, each \$1.25
 No. 3, for 2½ x 4¼ to 3¼ x 4¼ pictures, each 1.50
 No. 3A, for 3¼ x 5½ or smaller pictures, each 1.75

Woodmat



A new medium for mounting prints on the "slip in" principle, giving the effect of a rich brown wood frame.

	For Print	Outside	Each
No. 1	2¼ x 3¼	4¾ x 5¾	\$0.05
No. 1A	2½ x 4¼	4¾ x 6¾	.06
No. 3	3¼ x 4¼	5¾ x 6¾	.07
No. 3A	3¼ x 5½	6¾ x 8¾	.08
No. 4	4 x 5	6¾ x 7¾	.08
No. 4A	4¼ x 6½	7 x 9¼	.10

"Maskit" Printing Frame

The new Kodak "Maskit" Printing Frame is designed to overcome the difficulty of the negative and mask slipping on the glass, and to secure prints with a uniform white margin. Both negative and mask are held firmly, thus obviating the necessity of gumming.

Kodak "Maskit," $3\frac{3}{4} \times 4\frac{1}{4}$, opens two-thirds	\$0.40
Kodak "Maskit," $3\frac{3}{4} \times 5\frac{1}{2}$, opens two-thirds45
Kodak "Maskit," 5×7 , opens two-thirds50



Kodaloid Printing Masks

These transparent, orange color masks are intended for use with Maskit Printing Frames. Supplied in sets of three, each with different size opening.

Per set of $3, 3\frac{3}{4} \times 4\frac{1}{4}$	\$0.20	Per set of $3, 3\frac{3}{4} \times 5\frac{1}{2}$	\$0.25	Per set of $3, 5 \times 7$	\$0.30
Black paper masks, same sizes as above. Price, per set of 3, \$0.10					

Eastman Printing Masks

Made of transparent Kodaloid, to fit the regular 3A and 4 x 5 Printing Frames, in 7 masking sizes. Price, each, \$0.06

Printing Frames

Eastman $3\frac{3}{4} \times 12$, for No. 4 Panoram	\$0.75	Ditto, for $2\frac{1}{2} \times 4\frac{1}{4}$, film negatives or smaller	\$0.25
Kodak, opens in three sections		Ditto, $3\frac{3}{4} \times 3\frac{3}{4}$, $3\frac{3}{4} \times 4\frac{1}{4}$ opens two-thirds, each25
Eastman $2\frac{1}{4} \times 7$, for No. 1 Panoram30	Ditto, $3\frac{3}{4} \times 5\frac{1}{2}$, for films, opens two-thirds25
Kodak, opens in two sections		Ditto, for plates25
Brownie Printing Frame, No. 1, for $2\frac{1}{4} \times 2\frac{1}{4}$ Developing paper only10	Eastman 4×5 , opens two-thirds25
Brownie Printing Frame, No. 2, for $2\frac{1}{4} \times 3\frac{3}{4}$ Developing paper only15	Eastman 5×7 , opens two-thirds35
Eastman, for $2\frac{1}{4} \times 3\frac{3}{4}$ plates and V. P. or smaller film negatives25		

Developing Trays

"Bull's-Eye" Composition, $3\frac{1}{2} \times 4\frac{1}{2}$	\$0.12	"Bull's-Eye" Composition, 5×7	\$0.25
"Bull's-Eye" Composition, 4×515	"Bull's-Eye" Composition, $3 \times 8\frac{1}{2}$22
"Bull's-Eye" Composition, 4×615	"Bull's-Eye" Composition, $4\frac{1}{2} \times 14$50



Eastman Visible Graduate

This new moulded graduate, as its name implies, may be easily read in the dark room under the rays of the ruby light.

The graduations are opaque and not translucent as is the case with most graduates.

2 ounce	\$0.20	8 ounce	\$0.40
4 ounce25	16 ounce60

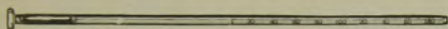
Eastman Thermometer

Especially valuable in tank or tray development. Has hook from which it can be suspended and has curved back to fit inside of tank.



Eastman Thermometer	\$0.65
-------------------------------	--------

Thermometer Stirring Rod



A combined stirring rod and thermometer. Carefully tested and accurate. Has flat end for pulverizing. The rod is $\frac{1}{4}$ inch in diameter and $9\frac{1}{4}$ inches long.

Thermometer Stirring Rod \$0.75

Flash Light Material



The simplest and safest method of making flash light pictures is by means of the Eastman Flash Sheets and Kodak Flash Sheet Holder. The sheets burn slowly, giving a broad, soft light, and not so startling to the subject as to give a staring effect to the eyes.

The holder is provided with a saw tooth for holding the sheet in proper position, and is lighted from the back, thereby protecting the operator.

*No. 1 Flash Sheets, per package of $\frac{1}{2}$ dozen sheets, 3 x 4	\$0.35
*No. 2 Flash Sheets, per package of $\frac{1}{2}$ dozen sheets, 4 x 556
*No. 3 Flash Sheets, per package of $\frac{1}{2}$ dozen sheets, 5 x 784
Kodak Flash Sheet Holder	1.00

Flash cartridges are recommended only where absolutely instantaneous exposures are required.

*Eastman Spreader Flash Cartridges, for use with pistol or fuse (price includes both fuse and cap), per package of $\frac{1}{2}$ dozen	\$0.35
Eastman Spreader Flash Cartridge Pistol75
*Eastman No. 1 Flash Cartridges, per package of $\frac{1}{2}$ dozen84
Ditto, No. 266
Ditto, No. 335

*Prices subject to change without notice.

Kodak Magnesium Ribbon Holder

This extremely handy little apparatus provides a most convenient method of burning magnesium ribbon for photographic purposes. It comprises at once a compact magazine for storing the ribbon, a convenient holder for burning it, and a ready means of measuring definite lengths of the ribbon for printing on Velox and other gas light papers, lantern slides, etc.



Kodak Magnesium Ribbon Holder . . \$0.20 Alcohol Lamp, for use with above . . \$0.20



Kodak Candle Lamp

This clever little lamp is collapsible and can be packed into very small space when not in use. It is made of special tested ruby fabric, bound in metal frames and gives a strong, safe light for the dark room.

Kodak Candle Lamp \$0.25
Extra Candles for same, per dozen30

Kodak Dark Room Lamp

The Kodak Dark Room Lamp is oil burning and is fitted with both orange and ruby glass. It has an unusually broad wick regulated from the outside and gives a soft, steady light for the dark room.

No. 2 Kodak Dark Room Lamp \$1.00



Brownie Safelight Lamp

The Brownie Safelight Lamp is but little larger than the electric bulb it holds, and the lamp itself screws into an electric socket which may be conveniently situated close to the place where the developing is to be done.



The lamp is made of metal, neatly japanned; has circular removable safelight in the end, and large removable safelight in the side. Takes a 15 Watt Mazda lamp, which is not included.

The Brownie offers a most satisfactory means for dark room lighting where electricity is available.

Brownie Safelight Lamp \$1.00

Kodak Safelight Lamp

The Kodak Safelight Lamp is ideal for all amateur dark room uses. Though somewhat smaller in size and costing less than the Wratten Safelight Lamps, it has the same principle of indirect illumination and uses the Wratten Safelights.

It is made of metal; neatly finished in a warm tone of brown and the inside is enameled white to intensify the force of the reflected light from the electric bulb in the top.

With the exception of electric bulb, the lamp is supplied complete, including safelight and four feet of electric cord with socket.

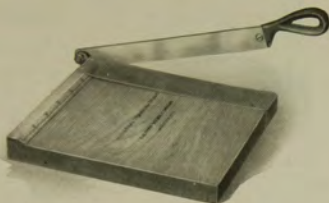
Kodak Safelight Lamp \$3.00



Kodak Trimming Boards

Made of hard wood, with natural finish, have fine quality steel blades and are fitted with rule.

No. 1, capacity, 5 x 5 inches	\$0.40
No. 2, capacity, 7 x 7 inches60
Transparent Trimming Gauge (extra)20



Velox Transparent Water Color Stamps

The making of beautifully colored prints or lantern slides, by the use of Velox Transparent Water Color Stamps, will be found an interesting and highly enjoyable diversion.

Each book of stamps includes twelve sheets of colors and each sheet is divided by perforations into twenty-two stamps. To use any color, merely tear off a stamp, place in a small saucer or palette supplied with the outfit, and cover with about a teaspoonful of water. Simple directions are given and no special artistic skill, no knowledge of painting whatever is necessary.



The Velox Transparent Water Color Stamp Outfit offers the greatest convenience in coloring prints, as it includes the book of stamps, three brushes and a white enameled mixing palette, put up in a neat cardboard case.

Velox Transparent Water Color Stamps, complete booklet, 12 colors . . .	\$0.25
Separate Color Leaves, two sheets05
Set of 3 Special Brushes, per set50
Mixing Palette25
Velox Transparent Water Color Stamp Outfit, including book, three brushes and palette75

Eastman Photo Paste



A solid, first quality white paste, will not discolor print or mount.

4-ounce jar . . .	\$0.10	3-ounce tube . . .	\$0.15
8-ounce jar20	5-ounce tube25
2-ounce tube . . .			\$0.10

Flexo Print Roller

A thoroughly practical roller for mounting. Has 4-inch rubber roller and black enamel frame.



Flexo Print Roller \$0.20

Kodak Print Roller



The best roller constructed for amateur use. Has two 6-inch rubber rollers and finely nickeled frame.

Kodak Print Roller \$0.50

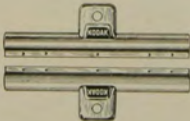
Kodak Junior Film Clip

This new clip is the most practical for tank development or drying of films. Has two jaws to prevent film from slipping. One size only.



Kodak Junior Film Clip \$0.10

Eastman Film Clip



A thoroughly dependable clip. Made in two sizes and nickel plated.

3½-inch, per pair	\$0.25
5-inch, per pair30

Sundries

Cable Release	\$0.25	Ferrotypes Plate, 10 x 14, light . . .	\$0.15
Hard Rubber Stirring Rod20	Ferrotypes Plate, 10 x 14, heavy20
Kodak Film Clips, 5 inch (wood)		Ferrotypes Plate, 14 x 20, heavy45
per pair15	Ferrotypes Plate, 18 x 24, heavy75
Finger Tips, set of 315	Eastman Special Squeegee, 6-	
Focusing Cloth, per yard50	inch30
Eastman Spotting Colors, per set	.25	Ditto, 8-inch35

Developing and Printing on Velox Paper

Size	Developing and Printing Per Roll		Developing Only Per Roll	Printing Only Each Exposure	
	Mounted	Unmounted		Mounted	Unmounted
1½ x 2 12 ex.	\$0.90	\$0.84	\$0.25	\$0.06	\$0.05½
1¾ x 2½ 12 ex.	.95	.89	.40	.06	.05½
1¾ x 2½ 8 ex.	.65	.60	.30		
1¾ x 2½ 6 ex.	.50	.45	.20		
2¼ x 2¼ 6 ex.	.50	.47	.20	.06	.05½
2¼ x 3¼ 12 ex.	1.40	1.28	.50	.08	.07
2¼ x 3¼ 6 ex.	.70	.64	.25		
2½ x 4¼ 12 ex.	1.50	1.38	.70	.08	.07
3½ x 3½ 12 ex.	1.50	1.38	.70	.08	.07
3¼ x 4¼ 12 ex.	1.50	1.38	.70	.08	.07
3¼ x 4¼ 6 ex.	.75	.69	.35		
2¾ x 4¾ 10 ex.	1.50	1.40	.80	.10	.09
2¾ x 4¾ 6 ex.	.90	.84	.50		
3¼ x 5½ 10 ex.	1.50	1.40	.80	.10	.09
3¼ x 5½ 6 ex.	.90	.84	.50		
4 x 5 12 ex.	1.80	1.68	1.00	.10	.09
4 x 5 6 ex.	.90	.84	.50		
4¼ x 6½ 6 ex.	1.20	1.05	.60	.12½	.10
5 x 7 6 ex.	1.20	1.05	.60	.12½	.10
2¼ x 7 6 ex.	1.40	1.28	.50	.16	.14
3½ x 12 4 ex.	1.40	1.28	.75	.20	.17

Unmounted prints are furnished unless otherwise specified in order.

"Double Weight" prints will be billed at mounted rates.

No orders executed for less than \$0.25.

Prints mounted with "Kodak Dry Mounting Tissue," no curling.

Enlargements

	Each	Per Doz.		Each
4¼ x 6½, on card . . .	\$0.35	\$3.00	10 x 12, on card	\$1.00
6½ x 8½, on card50	5.00	11 x 14, on card	1.25
8 x 10, on card75		14 x 17, on card	1.50
Lantern Slides50	5.00	Larger sizes in proportion.	

3¼ x 5½ Enlargements, from 1½ x 2½ negatives, each, unmounted \$0.15, mounted \$0.16.

No extra charge for Sepia Tones. Small extra charge for double or triple mounting.

Where the kind of paper is not specified, we use our own judgment.

Tested Chemicals



Certainty in making negatives and prints depends as much on the quality of your chemicals as on any other one thing. All Kodak chemicals are tested both photographically and for purity before the E. K. C. tested seal is allowed to go upon them. That seal is your protection.

Eastman Chemical Outfit consists of M. Q. and Special Developers, Intensifier, Reducer and Velox Re-developer	\$0.30
Eastman Special Developer Powders, per package 5, in sealed glass tubes25
Eastman Hydrochinon Developer Powders, per dozen50
Ditto, per ½ dozen25
Ditto, per package 5 powders, in sealed glass tubes25
Eastman Pyro Developer Powders, per dozen50
Ditto, per ½ dozen25
Ditto, per package 5 powders, in sealed glass tubes25
Tozol, per 1-ounce bottle50
Elon, per 1 ounce	1.00
Roylon, per 1-ounce bottle88
Hydrochinon, per 1-ounce can72
Eastman Permanent Crystal Pyro, per 1-ounce bottle33
Velox Re-developer Tubes, package of 12 tubes60
Hypo Sulphite of Soda, granular, per pound08
Alum, powdered, per pound40
Kodak Acid Fixing Powder, per pound package25
Ditto, per ½-pound package15
Ditto, per ¼-pound package10
Eastman Intensifier, glass tube, per tube15
Eastman Reducer, per box of 5 tubes25
Eastman Opaque No. 1, per tube15
Potassium Bromide, per ounce65
Acetic Acid, 28 per cent., per 1-pound bottle33
Citric Acid, 4-ounce bottle40
Eastman Tested Carbonate of Soda (desiccated), per 1-pound bottle22
Eastman Tested Sulphite of Soda (desiccated), per 1-pound bottle33

For Velox preparations, see page 50. For Solio preparations, see page 51.

For Tank Developer Chemicals, see page 41.

Terms

The prices in this catalogue are strictly net, except to regular dealers who carry our goods in stock. *These prices, owing to unsettled conditions, are, however, subject to change without notice.* For the convenience of our customers we recommend that they make their purchases from a dealer in photographic goods, as by so doing they can save both time and express charges.

EASTMAN KODAK CO.

ROCHESTER, N. Y.

K O D A K

Is our registered and common-law trade mark and cannot be rightly applied except to goods of our manufacture. When a dealer tries to sell you under the Kodak name a camera or films or other goods not of our manufacture you can be sure that he has an inferior article that he is trying to market on the Kodak reputation



*If it isn't an Eastman,
it isn't a Kodak*

