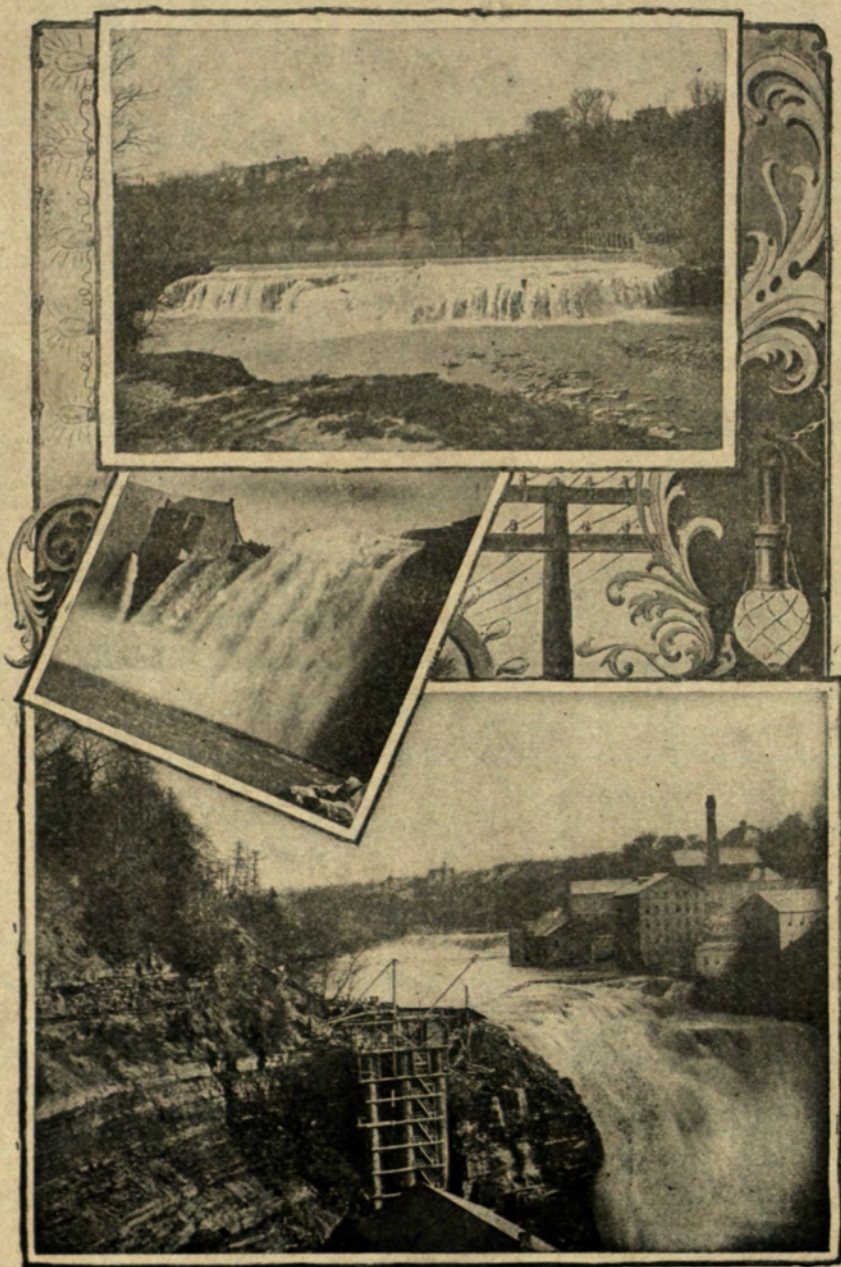


Dear Old Rochester



A
LOCAL
HIT

SONG

Words by

N. N. BRITTON

5

Music by **THEODORE J. SCHLICHT**

Composer of "Bye O'Baby Bunting," Sung in Hoyt's "A Trip to Chinatown."

1908

Published by Wm. A. Calihan Publishing Co., Rochester, N.Y.

"DEAR OLD ROCHESTER."

SONG.

Words by N. N. BRITTON.

Music by THEODORE J. SCHLICHT.

Moderato.

f

Musical notation for the piano introduction, consisting of two staves (treble and bass clef) in G major and common time. The tempo is marked *Moderato*. The first staff begins with a treble clef and a key signature of one sharp (F#). The second staff begins with a bass clef and a key signature of one sharp (F#). The music is marked with a forte dynamic (*f*).

1. There's a Cit - y wide - ly known, that we love to call our own, On the
 2. If you want a trol - ley ride with your sweetheart or your bride, There's a

Musical notation for the vocal line, consisting of a single staff in G major and common time. The melody is simple and catchy, with a key signature of one sharp (F#).

mf

Musical notation for the piano accompaniment, consisting of two staves (treble and bass clef) in G major and common time. The music is marked with a mezzo-forte dynamic (*mf*).

banks of the far-fam'd Gen - e - see,..... Where the Ko - dak was in - vent ed, and to
 doz - en i - deal trips for such a lark,..... And if you are short of "Mon." when your

Musical notation for the vocal line, consisting of a single staff in G major and common time. The lyrics are printed below the staff.

Musical notation for the piano accompaniment, consisting of two staves (treble and bass clef) in G major and common time.

all the world pre-sent-ed, That's the on-ly place I ev-er care to be;..... Ma-ny
 days work is done, 'Most an-y car will take you to a park,..... The

rit. *mf*

pag-es are de-vot-ed to the things for which it's not-ed, And the
 girls in our fair Cit-y are as elev-er as they're pret-ty, Of.....

ma-ny pleas-ant feat-ures of this town..... No one ev-er cares to roam ver-y
 ev-'ry-thing, in fact, we have the best,..... In noth-ing are we late, we're so

far a - way from home, All are per - fect - ly con - tent to set - tle down.....
strict - ly up to date, That the on - ly thing we real . ly need is rest.

mf *rit.*

2/4

CHORUS.

In dear old Roch - es - ter, Life is one sweet

Marcia.
mf

2/4

dream, All ov - er the world you may trav - - el, And to

f

beat it you may try;..... In dear old

mf

Detailed description: This system contains the first two lines of music. The top line is a vocal melody in G major, starting with a quarter note 'beat' and ending with a half note 'old'. The piano accompaniment consists of two staves. The right hand plays a rhythmic pattern of eighth and sixteenth notes, while the left hand provides a steady bass line. A dynamic marking of *mf* is placed between the piano staves. The system concludes with a repeat sign.

Roch - es - ter, Life is one sweet dream,..... There is - 'nt a

mf

Detailed description: This system contains the second two lines of music. The vocal line continues with 'Roch - es - ter,' and 'Life is one sweet dream,.....'. The piano accompaniment continues with similar rhythmic patterns. A dynamic marking of *mf* is present. The system concludes with a repeat sign.

place that's in the race, With Roch - es - ter N. Y.

cres.

Detailed description: This system contains the final two lines of music. The vocal line concludes with 'place that's in the race, With Roch - es - ter N. Y.'. The piano accompaniment features a crescendo marked *cres.* and ends with a final chord. The system concludes with a repeat sign.