

# BEAUTIFUL IVY LEAF

WORDS AND MUSIC AS SUNG IN..



\* W.H. Powers's  
Great Irish Drama \*

# THE IVY LEAF

... TO BE PRODUCED AT ...

Lyceum Theatre, FEB. 18, 19, & 20.

MATINEE WEDNESDAY.

THIS SONG COPYRIGHTED BY  
W. H. POWER, JAN. 1896.

# Beautiful Ivy Leaf.

Words by Con. T. Murphy.

Music by Thos. H. Chilvers.

*Introduction.*  
*Andante moderato.*

Musical score for the introduction of 'Beautiful Ivy Leaf'. It features a piano accompaniment in 3/4 time, marked *mf* and *p*. The score includes dynamic markings *mf*, *p*, and *Dim.*. Pedal markings are indicated with asterisks and the word 'Ped.' below the notes.

VOICE.

Vocal line for the first part of the song. The lyrics are: Beau - ti - ful shin - ing leaf of green, Why were you plucked from the par - ent vine, Beau - ti - ful leaf, if you on - ly knew, How light her heart was be - fore you came.

Vocal line for the second part of the song. The lyrics are: On - ly for sor - row and care I ween, On - ly to break her heart and mine, You'd hide a - way from the morn - ing dew, And in the sun - light blush with shame.



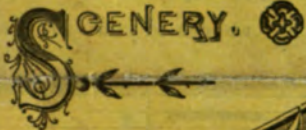
The Most Beautiful Realistic Irish Drama

EVER PRODUCED

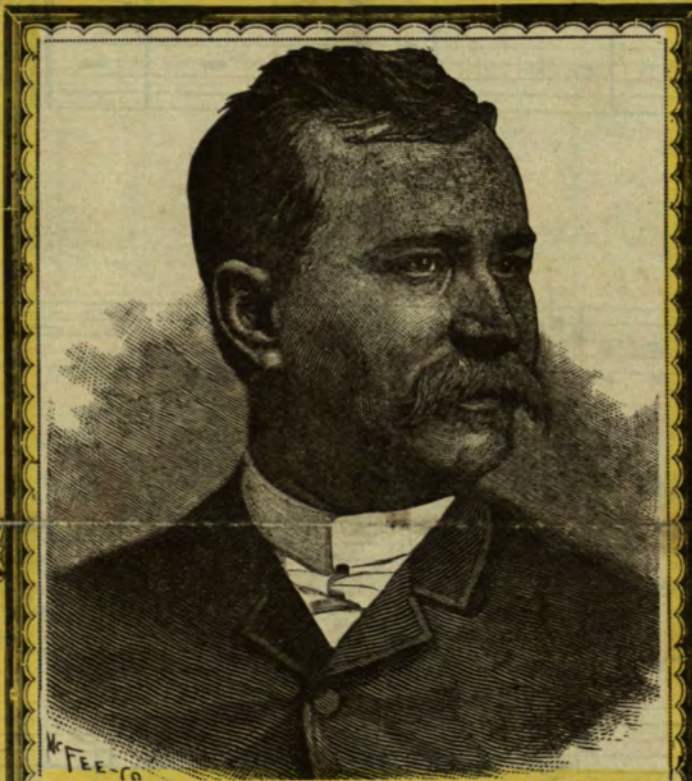


AN ELABORATE SCENIC PRODUCTION.

A CAR LOAD OF SPECIAL SCENERY.



A Magnificent Company.



W. H. POWER, PROPRIETOR AND MANAGER.

A Genuine

IRISH PIPER

A Choice

Selection of

Songs.

THE BEST

IRISH DANCERS

IN AMERICA



DON'T FAIL TO SEE THE

IVY LEAF

CINCINNATI: THE OHIO VALLEY PRINT, 141 AND 143 RACE STREET.