

PRICE, TEN CENTS.

SOLD BY BOOKSELLERS AND NEWSDEALERS.

Osley Ainsworth
Steam & Hydraulic Engineer
28 Jay Street

ROCHESTER
City Index
AND
GUIDE BOOK

- 1890 -

HOWARD L. WILSON,
PUBLISHER.

76 STATE STREET,
ROCHESTER, N. Y.

ALL + THESE + AT + LOVEJOY'S.



THE MONROE



THE MONROE

NOTHING LIKE IT IN THE WIDE WORLD.

THE BEST MADE, BEST KNOWN, BEST LIKED RANGE IN THE UNIVERSE

ONE FIRE THE YEAR AROUND.

— NO DUST. NO DIRT. —

Is Life Worth Living? Get a Monroe and then you'll know.

— MADE BY THE —

CO-OPERATIVE FOUNDRY CO.

And Sold by the Largest Dealers in every Town.

If you'll like \$5,000.00 when you're sixty, see inside back cover

- 1890 -

SECOND EDITION.

Rochester

CITY INDEX

—AND—

Guide Book.

*Being a Street Directory of the city, with notes upon
its objects of interest, Institutions, Manufactures,
Schools and Churches, City Government, etc.*

FOR THE INFORMATION OF RESIDENTS
AS WELL AS VISITORS.

The Publisher wishes to inform the public that he has entered copyrights upon similar works for various cities in the east and west, and that he will extend, improve and protect the enterprise by all desirable means.

HOWARD L. WILSON,

COMPILER AND PUBLISHER.

76 STATE ST., ROCHESTER, N. Y.

1890.

CONTENTS.

Complete New and Correct City Map,	-	Inset.
Complete Street Directory, revised to date,	-	3-27
Blocks, Buildings, Halls, etc.,	-	27
Objects of Interest,	-	29-35
Powers Building and Art Gallery, U. S. Building, N. Y.		
State Arsenal, Monroe County Buildings, City Buildings, Kimball's Orchid House, Warner Observatory, &c.		
- Parks, Falls and Bridges,	-	37-41
South Park, North Parks, Reservoir Park, Falls of the Genesee, Bridges over Genesee.		
City Government,	-	41-47
City Officials, Police Department, Fire Department, Water Works Department.		
Chamber of Commerce,	-	47
Manufactures,	-	47
Educational Interests,	-	49-55
Public Schools, Principals, Free Academy, University, Theological Seminary, Academy of Science, Mechanics Institute, State Industrial School, Deaf Mute Institution.		
Public and Charitable Institutions,	-	57-59
Hospitals, Orphan Asylums, Industrial School, Dispensaries, Woman's Christian Association, etc.		
Church Directory,	-	60-62
Young Men's Christian Association,	-	62
Libraries,	-	63
Post Office,	-	64
Mails close, Mails arrive, Delivery and Collection trips, Stamp Agencies, etc.		

STREET DIRECTORY.



As new streets are constantly being laid out, it is not possible to publish a directory which shall contain *all* the additions and changes. This list has been compiled and revised with great care, and we know it to be far in advance of any heretofore published. At the end of this may be found the names and location of some of the new streets.

We give, first the correct name of the street; second, the figures by which it is found on the accompanying map; third, the location and direction of the same.

It will be observed that the alleys have been omitted which makes it much easier to find the streets.

See Map in regard to numbers on streets.

Aderdeen, E 20 Genesee west	Angle, E14 Lyell av. north to Sherman
Achilles, R18 North ave. e. to Stillson	Anne, C12 Otis north to Villa place
Ackerman, Ab12 Bay s. to Webster av.	Anson Park, U23 East avenue south
Acorn, C83 Hazel east	Anthony, D29 Narcissa w. to Thurston
Adams, M28 River west to Jefferson av.	Appleton, C23 Hancock w. to Somerset
Adwen, X26 Monroe avenue south to canal	Aqueduct, O29 East Main s. to canal
Aldern, G6 Ravine ave. north	Arcade, O19 Main n. to Exchange pl.
Alexander, Q24-W13 Mt. Hope avenue east to Bay	Argyle, Ac23 East ave. s. to Park ave.
Alexander Park, Q24 Comfort south to Alexander	Arklow, H21 Terry s. w. to New York
Allen, M18 State west to Brown	Arlington, Y10 University ave. north to Anderson ave.
Allmeroth, V27 Henrietta ave. north to canal	Arnold Park, W21 East ave. south to Park avenue
Almira, N12 Gorham north cr. Lowell	Arthur Place, T14 North ave. east to Flinnay
Alphonse, S8 Thomas east to Carter	Ashland, P26 Averil's ave. north and south crossing Gregory
Ambrose, I14 Lake ave. east and west to Paratoga ave.	Atkinson, M22 Plymouth ave. west to Reynolds
Ames, C22 West ave. n. crossing Jay	Augusta, V14 Seio east to Prince
Amity, R17 Chatham east to North av.	Augustine, F3 Lake avenue west to Boulevard
Anderson Avenue, Z18 N. Goodman e. and s. to University ave.	Avenue A, K7 North St. Paul east to North Union
Andrews, P17 River east to North av.	Avenue B, K7 North St. Paul east
Andrews Place, Q17 Andrews north to Clinton place	Avenue C, K7 North St. Paul east



-- JUST WAIT A MOMENT

Before you look through this valuable little book we want to impress it upon your mind that there is no place in the State where you can find such an elaborate display of

ART POTTERY, CUT GLASS,

Sterling and Plated Silver, Cutlery, Lamps, Bronzes, China, Fancy Goods, House Furnishing Goods, &c., as at

W. H. GLENNY & CO'S,

(G. B. WATKINS, Manager.)

Seven Story Brown Stone Building,

190-194 E. Main St., Rochester, N. Y.

All Goods Marked in Plain Figures. One Price to All.

Elgin Watch Club Co.

10 REYNOLDS ARCADE.

WE MAKE A SPECIALTY OF

**WATCHES + AND + DIAMONDS + FOR + CASH,
OR EASY PAYMENTS.**

It is conceded that we carry the finest and largest line of Ladies' and Gentlemen's Gold and Silver Watches in Rochester.

WATCH AND CLOCK REPAIRING

PROMPTLY ATTENDED TO.

10 Arcade,

Opposite Post Office.

- Avenue D, K6 North St. Paul east to North Clinton
 Avenue E, K6 North St. Paul east to Conkey avenue
 Averill Avenue, P26 Mt. Hope ave. east to Monroe avenue
 Averill Park, V23 Monroe ave. north
 Avon Place, W29 Field northwest
 Backus Avenue, Q11 Bloss north to Emerson
 Baden, R12 St. Joseph east to Hudson
 Baldwin, A14 Hayward ave. north to Parsells avenue
 Bartlett, L26 Plymouth ave. west to Genesee
 Barton, G32 Plymouth ave. southwest to Genesee
 Basin, O20 Exchange e. to Aqueduct
 Bates, A23 East ave. south to Sibley
 Bauer, D11 Sherman west to Gates av.
 Bauer Place, D12 Otis north to Bauer
 Bay, W11 North ave. east to city line
 Beach, K4 North St. Paul east to Reynolds place
 Beacon, Z19 University ave. north to Anderson avenue
 Beckley, U25 Averill ave. s. to Melgs
 Beechwood, J12 Lake av. east to river
 Benton, S29 Mt. Vernon ave. east cr. Pinnacle av.
 Berlin, R7 St. Joseph east to Hudson
 Bernard, S8 Maria east to Carter
 Bethlehem Park, C16 Murray west to Moulson
 Bingham Park, A29 Hovey south to Sawyer
 Binsack Place, D20 Maple south to Wagner place
 Birch, D35 Chester av. to Congress av.
 Birr, F4 Lake ave. west to Boulevard
 Bismark Place, N15 North St. Paul w. to river
 Bloomingdale Avenue, O6 N. Clinton east to North Joiner
 Bloss, H12 Fulton av. w. to Backus av.
 Bly, V30 Pinnacle ave. west to Warren
 Boardman Avenue, W26 Monroe ave. south to canal
 Bolivar, I15 Jay north to Lyell ave.
 Bond, S26 Hamilton place s. to Grand
 Borchard, O4 North Clinton east to North Joiner
 Boston Court, K9 Harris ave. west
 Boston Park, P8 St. Joseph west
 Boulevard, E26 Driving Park ave. north to city line.
 Bowen, A22 Monroe ave. north to East ave.
 Briggs Place, E23 Chilliav. s. to Moran
 Brighton, V29 Pinnacle ave. northeast to Nelser
 Brighton Avenue, W28 Melgs east to Nichols park
 Brinker Park, L11 Hart av. n. to R. R.
 Broadway, S23 Monroe ave. southeast to Melgs
 Broezel Park, E6 Rowe n. to Driving Park ave.
 Bronson, I1 Rose to Riverside ave.
 Bronson Avenue, H24 Caledonia ave. west to Warwick ave.
 Bronson Place, C17 Jay north to Bethlehem park
 Brooks, D12 Otis north to Bauer
 Brooks Avenue, R83 Plymouth ave. west to Thurston
 Brown, I22-L16 State east and west to West ave.
 Brown's Race, M16 Center n. to Brown
 Brown's Square, K17 Brown n. to Jay
 Brunswick, A23 East ave. south to Park ave.
 Bryan, E4 Pierpont av. to Boulevard
 Buchan Park, P11 North Clinton east to St. Joseph
 Buckingham, A23 East ave. south to Park ave.
 Buell Avenue, I5 Driving park av. n.
 Burkard Place, R27 South ave. east
 Butler, J18 Canal west to Magne
 Cady, K25 Olean west to Summer
 Caledonia Avenue, M22 West ave. south to Plymouth ave.
 Caliban Park, C13 Lyell ave. south
 Cambridge, X23 Park ave. south to Brighton ave.

The Kenyon Hat and Fur Co.,

IMPORTERS AND MANUFACTURERS OF

LADIES' FINE FURS.

✦ GENT'S STYLISH HATS. ✦

Manufacturers of Society Goods.

BADGES, ✦ BANNERS, ✦ RECALIAS,

AND ALL KINDS OF

BULLION & EMBROIDERY,

→☉→ WHOLESALE AND RETAIL. ←☉←

Correspondence Solicited and Estimates Promptly Given.

140 E. Main St., - Rochester, N. Y.

- Cameron, E13 Lyell ave. n. to Otis
 Campbell, E18 Grape west to city line
 Canal, K20 West ave. north to Allen
 Canfield Place, T21 South Union east
 Carl Park, O8 North Clinton east to North Joiner
 Carlton, Z19 University ave. north to Benson
 Carlton Place, B23 West ave. south to Chili ave.
 Caroline, S28 South av. east crossing Pinnacle ave.
 Carter, V3 Clifford north to city line
 Casper, V11 North ave. e. to Zimmer
 Cataract, N15 North St. Paul w. to river
 Catharine, P12 North Clinton east to St. Joseph
 Cayuga Place, T27 Grand s. to Melga
 Centennial, D19 Maple n. to Campbell
 Central Avenue, Q16 State east to North Union
 Central Park, X12 North Union east to North Goodman
 Center, M18 State east to river, and west to R. R.
 Center Park, L19 Elizabeth west to North Ford
 Center Square, M18 Allen cor. Sophia
 Chase, E12 Sherman west to Brooks
 Chamberlain, Acl5 East Main north to Hayward ave.
 Champion, G8 Ravine ave. north
 Champlain, H25 Olean west to Kenwood ave.
 Charles, J18 Butler north to Jay
 Charlotte, T18 Scio east to Alexander
 Chatham, R17 Franklin n. to Baden
 Chester, D21 Colvin west to Ames
 Chester Avenue, D83 Genesee west to Hazel
 Chestnut, R20 East ave. south to Monroe ave.
 Chestnut Park, S19 Chestnut east to William
 Child, E15-21 Thomas park north to Lyell ave.
 Chili Avenue, B24 West ave. south-west to city line
 Church, N19 State west to Sophia
 Claremont Park, V29 Pinnacle ave. e.
 Clarissa, M26 Mt. Hope ave. west to Plymouth ave.
 Clark, I19 Brown west to Grape
 Clarkson, H8 Ravine ave. north to Glenwood ave.
 Cleveland, T11 Hudson east to North
 Cleveland Park, N9 North Clinton w.
 Cliff, K14 Lake ave. east
 Clifford, K10 Ab8 North St. Paul east to city line
 Clifton, H23 Prospect w. to Genesee
 Clinton Park, R22 Monroe placesouth to canal
 Clinton Place, Q16 North Clinton east to North ave.
 Cobb, U24 Alexander e. to Averill av.
 Cole, O12 Gorham north to Lowell
 College, F23 Genesee w. to Briggs pl.
 College Avenue, X17 Prince east to Goodman
 Colvin, D18 West ave. n. to Campbell
 Columbia Avenue, H27 Plymouth av. west to Genesee
 Comfort, R24 Mt. Hope ave. east to Pinnacle ave.
 Concord Avenue, T12 North north-east to Hudson park
 Congress Avenue, D35 Genesee west to Hazel
 Conkey Avenue, L8 Scrantom north to Avenue E
 Cook, N36 Mt. Hope ave. east to South ave.
 Copeland, Acl2 Webster av. n. to Bay
 Cork, O15 Hand south
 Cornell, W24 South Goodman east to Nichols park
 Cortland, R19 East Main south to Monroe ave.
 Costar, H12 Frank west to canal
 Cottage, A30 Magnolia south and west to Thurston
 Court, P21 Exchange east to Union
 Crothers Place, T22 Monroe av. north
 Crouch, Ad18 University ave. north to Leighton ave.

Boys' and Youths' ✦ SHOES. ✦

Every attention is paid to our BOYS' and YOUTHS' Department.

It is a luxury for parents to know where to buy Boys' Shoes that will

FIT AND WEAR WELL.

TRY A PAIR AT

GOULD, LEE & LUCE,
10 State Street.

LOUIS PHALER.

FRANK D. SMITH.

PHALER & SMITH'S BARBER SHOP,

34 Exchange Place,
Opp. Academy of Music.

One door from Arcade,
One door from State-st.

A. I. LOOMIS, Proprietor.

BONDS GIVEN IF DESIRED.

Merchants' Delivery,

Office, 28 & 30 Division Street.

TIME TABLE.

RAILROAD. Central—1:30 & 4:00 p. m. West Side, 3:00 & 4:00 p. m.
CITY. 7:45 & 10:30 a. m. 1:30 & 4:00 p. m. 7:00 p. m. on Saturday.

Culver, Ab28 Monroe ave. at city line
 north east
 Culver Park, Aa20 University ave.
 southeast
 Cummings, Acl0 Bay north to Clifford
 Curtis, B10 Sherman west to Eleventh
 Cypress, O28 Mt. Hope ave. east to
 South ave.
 Dake, W12 Hebard east to Alexander
 Dallas, A18 Campbell north to Jay
 Dana, E12 Sherman east to canal
 Davis, U14 North ave. east to North
 Union
 Dean, L18 Frank west to Oak
 De Jonge Park, P8 North Joiner east
 to St. Joseph
 Delaware, Z19 University ave. north
 to Anderson ave.
 Delevan, S16 North ave. east to Scio
 Denning, S23 Broadway west to canal
 Denver, Acl5 Garson av. to Grand av.
 Diamond Place, Ab12 Webster ave.
 north to Bay
 Diem, T29 Caroline north and south
 to Benton
 Division, O18 North St. Paul east to
 North Clinton
 Dix, B12 Otis north to Villa place
 Donlon, Ab24 Sibley north
 Doran Park, M27 Plymouth ave. east
 Dover, P11 Buchan park north
 Dove, B6 Rowe n. to Driving Park av.
 Draper, U11 North east to North av.
 Drayton, T11 Hudson east to North
 Driving Park Avenue, C8 Lake ave.
 east and west to R. R.
 Dubelbelss Park, X10 Bay north to
 Clifford
 Dudley, S9 Weeger north to Clifford
 Eagle, M22 Tronp south to Atkinson
 East, T19 East ave. n. to Charlotte
 East Avenue, S19 East Main east to
 city line
 East Henry, Acl8 University ave.
 north to East Main

East Main, V17 Center of city east
 to Culver
 East Park, U19 East ave. north
 Eddy, F21 Silver northwest to Taylor
 Edinburgh, M24 Exchange east and
 west to Caledonia ave.
 Edison, O20 Exchange east and south
 to Court
 Edith, M27 Plymouth ave. east
 Edmonds, V25 Monroe av. s. to canal
 Edward, S9 Herman north to Vose
 and Weeger north to Bernard
 Eighth, C9 Emerson north to canal
 Eighth Avenue, Aa12 Wabash north
 to Bay
 Eleventh, A9 Emerson north to Driv-
 ing Park ave.
 Elizabeth, L19 West Main n. to Allen
 Elizabeth Place, O11 North Clinton e.
 Elk, Z19 University ave. north to
 Anderson ave.
 Elm, R19 East Main southeast to
 Chestnut
 Elm Park, R19 Euclid south to Bay
 Elmwood Avenue, E36 (city line,
 South ave. west
 Ely, Q19 South St. Paul east to Stone
 Emerson, H10 Lake ave. w. to cityline
 Emerson Place, F5 Hudson east
 Emma, Aa14 Webster ave. west to
 North Goodman
 Emmett, O14 Ward north to Hand
 Epworth, G28 Clifton south to Penn
 Erie, K18 Kent west to Warehouse
 Essex, F21 Brown north to Silver
 Ethel, L27 Plymouth av. s. to Flora
 Euclid, R19 Elm east to Chestnut
 Everett, Z14 North Goodman n.w.
 Evergreen, L19 North St. Paul east
 to North Clinton
 Evergreen Park, K10 Scrantom north
 to Clifford
 Exchange, O21 Main south to Clarissa
 Exchange Place, O19 State e. to Front
 Factory, M16 State e. to Brown's Race

For Elegant Work, combined with Promptness, try the Popular

CRITERION

STEAM
LAUNDRY,

44 MONROE AVE.,

CLARKE & LANGLOIS, Props.

Goods called for and delivered to any part of the city.

The Criterion cannot make new goods from old ones, but it guarantees less wear and tear on its patrons' material than any other

Laundry in Rochester. You will never regret sending your address on a postal card for a trial order.

CUBBISON, Down-town Agent, 66 EAST MAIN STREET.

JAS. T. CLARKE.

HOWARD LANGLOIS.

CARPETS

CLEANED,

FEATHERS RENOVATED,

MATTRESSES MADE, Furniture Re-covered.

Colors in Carpets Restored. No injury to the most delicate fabric.

BAILEY & CO.,

320 and 322 South St. Paul

AND

282 State St.

CARPET CLEANING WORKS

TELEPHONE 554.

Fairmount, Aa19 University av. north
 to Anderson ave.
 Falls, L15 Brown north to river
 Favor, L21 West av. south to Troup
 Field, X28 Monroe av. s. to city line
 Fien Place, M11 Oakman north to
 Scrantom
 Fifth Avenue, Z13 Pennsylvania ave.
 north to Bay
 Finch, D7 Ravine ave. north to Driv-
 ing Park ave.
 Finney, T14 Kirk north to Arthur pl.
 First, F7 Ravine ave. north to Driv-
 ing park ave.
 First Avenue, X13 Pennsylvania ave.
 north to Bay
 Flint, K28 Plymouth ave. east and
 west to Genesee
 Flora, L27 Violetta north
 Florence, H27 Bartlett s. to Strong
 Flour City Park, H0 Lake ave. west
 Flower, N8 North Clinton west
 Fourth, E7 Ravine ave. s. to Rowe
 Fourth Avenue, Y13 Matilda n. to Bay
 Frank, M18-II12 Center north to Bloss
 Frankfort, K16 Vought n. to Lyell av.
 Franklin, P17 East Main northwest
 to North St. Paul
 Franklin Square, R17 Andrews north
 to Clinton place
 Frederic, T12 Helena n. to Cleveland
 Friederich Park, R7 Hudson west
 Front, O18 East Main n. to Central av.
 Frost Avenue, H26 Plymouth ave.
 west to Warwick
 Fulton, E15 Whitney west to Child
 Fulton Avenue, H10 Jones av. north
 to Glenwood ave.
 Furnace, M17 State s. to Brown's Race
 Galusha, M12 Lowell n. to Hart ave.
 Garden, M22 Eagle w. to Caledonia av.
 Gardiner Park, N20 South Union east
 to Alexander
 Garson Avenue, Ac15 Webster ave.
 east to city line
 Gates Avenue, C10 Otis n. to Emerson

Genesee, F27 West ave. s. to city line
 Genesee Avenue, K2 North St. Paul
 to boat-landing
 George, S20 Chestnut east to South
 Union
 George's Park, I23 Clifton south
 German, V12 North ave. east to
 North Union
 Gibbs, S17 East av. n. to University av.
 Gilmore, S10 Hudson west to Edward
 Gladstone, G23 Clifton s. to Tremont
 Glasgow, N24 Exchange east and west
 to Caledonia ave.
 Glasser Park, D17 Jay north to
 Masseth park
 Glenwood Avenue, G8 Lake ave. east
 and west to city line
 Glenwood Park, F8 Lake ave. east
 and west to Oriole
 Gold, N35 Mt. Hope av. e. to South av.
 Good Court, Z23 Park ave. north
 Gorham, O13 North St. Paul east to
 N. Clinton
 Gorham Park, M14 Hand n. to Gorham
 Grace, T12 North east to Concord av.
 Grace Court, J13 Ambrose north
 Grand, S26 South av. e. to Pinnacle av.
 Grand Avenue, Aa14 Webster av. east
 to city line
 Granger, P16 North St. Paul east to
 North Clinton
 Grant Park, N13 Martin e. to Almira
 Grape, I18 Wilder north to Magne
 Graves, P19 East Main south to canal
 Greeley, Af 15 Garson av. to Grand av.
 Greenleaf Avenue, Ad18 University
 ave. north to Leighton ave.
 Greenwood Avenue, N22 Troup south
 to Atkluson
 Gregory, Q27 Mt. Hope ave. east to
 South ave.
 Greig, N25 Plymouth av. s. to Clarissa
 Griffith, R23 South St. Paul east to
 South Union
 Grove, S17 North ave. east to Gibbs
 Grove Place, S17 Gibbs e. to Windsor
 Guenther, Ac24 Park ave. s. to Sibley

WILLIAM C. WALKER, ARCHITECT,

Rooms 700, 701, 702,
Ellwanger & Barry Building,



PETER MAWDSLEY, PHOTOGRAPHER,

Landscapes, Interiors, Architecture,
Groups, and Home Portraits, 89--90 ARCADE,
ROCHESTER.

Pictures taken at night by Flash Light.



Paper Hangings.

SMITH & PETRIE,
INTERIOR DECORATORS, +
27 FRANKLIN ST.,
Cor. North Avenue.

Sole Agents for
Metallic Relief Decorations.



- Hague, B22 West ave. n. to Campbell
 Halbert, G21 Brown north to Silver
 Hamburg, Q14 Chatham west crossing
 St. Joseph
 Hamilton Place, Q25 Mt. Hope ave.
 east to Pinnacle ave.
 Hancock, D23 West ave. to Chill av.
 Hand, O14 North St. Paul east to
 North Clinton
 Hanna Place, O27 Mt. Hope ave. east
 Hanover, R12 Kelly north to Herman
 Harlem, X23 South Goodman east to
 Cambridge
 Harper, W24 South Goodman east to
 Oxford
 Harris Avenue, K8 Clifford north to
 Avenue D
 Harris Park, K8 Harris ave. west
 Harrison, R14 Chatham e. to Hudson
 Hart Avenue, L12 North St. Paul east
 to Galusha
 Harvard, W24 Melgs east to Oxford
 Harvest, Z11 Bay north
 Hastings Avenue, H7 Ravine ave.
 north on river bank
 Hawkins, M11 Oakman n. to Scrantom
 Hawley, J28 Seward west to Reynolds
 and Jefferson west to Genesee
 Hawthorn, Z21 East ave. north to
 Culver park
 Hayward Avenue, Aa16 North Good-
 man east
 Hayward Park, O 6 North Clinton
 east to Hudson
 Hazel, B35 Brooks ave. south
 Hebard, W13 Railroad north to Bay
 Hebard Avenue, Ac10 Bay north to
 Clifford
 Helena, S12 Hudson east to North
 Henion Place, G23 West Av. south to
 Clifton
 Henrietta Avenue, V28 Pinnacle ave.
 east and north to canal
 Henrietta Park, V28 Henrietta ave.
 north to canal
 Henry, R10 Herman north to Bernard
 Herman, S11 St. Joseph e. to Hudson
 Hibbard Place, V18 Scio e. to Hebard
 Hickory, P27 Mt. Hope ave. east to
 South ave.
 High, Aa10 Ulm e. to North Goodman
 Highland Avenue, O83 Mt. Hope ave.
 east to city line
 Hill, K19 Elizabeth west to Allen
 Hixson, R10 Thomas west to Maria
 Hoeltzer, P10 North Clinton east to
 St. Joseph
 Hoff, R5 Hayward park north
 Holland, Q14 St. Joseph east and
 north to Nassau
 Hollenbeck, M5 Avenue D n. to city line
 Hollister, V10 Hudson park north to
 Clifford
 Holmes Avenue, C6 Rowe north to
 Driving park ave.
 Hope, R13 Hanover east to Hudson
 Hopeman Place, P3 Joiner east
 Hosford, Ad10 Bay north to Clifford
 Hovey, A29 Bingham pk. east and west
 Howard, U29 Benton south to Bly
 Howell, Q22 South St. Paul east to
 Monroe ave.
 Howland, J1 Riverside ave. south
 Hubbell Park, N25 Exchange west to
 Greig
 Hudson, S15 North av. n. to city line
 Hudson Park, S11 Edward east to
 North ave.
 Hume, E28 Genesee west
 Huntington, T10 Hudson e. to North
 Hyde Park, Q16 Clinton place north
 to Central ave.
 Irondequoit, V11 North av. southeast
 Irving Place, O20 West Main south
 to canal
 James, S19 Chestnut east to Court
 Janes, B17 Jay n. to Bethlehem park
 Jaques, V29 Pinnacle ave. northeast
 to Henrietta ave.
 Jay, G17 State west to city line
 Jefferson Avenue, I26 Brown south
 to Plymouth ave.
 Jefferson Park, Q25 Alexander south
 to Hamilton place

Flour City Life Association,

181 to 187 East Main Street,

ROCHESTER, N. Y.

C. F. UNDERHILL, Prest.

WM. P. CHASE, Sec'y,

ROBERT McCARGO, Vice Prest, GEORGE A. SABEY, Treas,

JAMES McCARGO, Adjuster.

OVER 9,000 CERTIFICATES IN FORCE

At this date (July 1st, 1890.

\$155,000 Paid in Death Claims.

RESERVE FUND, CLASS "B" \$13,400

AND STEADILY INCREASING.

Organized under the stringent laws of the State of New York, February 24th, 1887. Issue Policies from \$1,000 to \$4,000 between ages of 18 and 65 years.

Pays all Losses Promptly and in Full.

Indorsed by press and public. The plan works itself.

Address Home Office for Full Particulars.

GOOD AGENTS WANTED.

Jennings, X7 North ave. east to
 North Goodman
 Jersey, S21 George south
 Jersey, Ab19 Culver park north to
 University ave.
 John, L18 Platt south to R. R.
 Johnson Park, Q20 Stone east to
 South Clinton
 Joiner, P14 Central ave. n to Kelly
 Jones, K16 Center north to Lyell ave.
 Jones Avenue, I13 Lake av. w. to West
 Jones Square, H13 Jones ave. north
 to Lorimer
 Joslyn Park, U17 Scio east
 Julia, K22 West ave. s. to Atkinson
 Kay Terrace, G7 Rowe south
 Keeler, Z27 Monroe ave. north
 Keller, Aa9 Elm east
 Kelly, Q13 N. Clinton east to Hudson
 Kenmore, H27 Bartlett s. to Strong
 Kent, K17 Allen north to Lind
 Kenwood Avenue, E23 Chili ave. to
 Frost ave.
 Ketchum, O7 North Clinton east to
 North Joiner
 King, J21 West ave. north to Brown
 Kirk, T15 North av. e. to North Union
 Kislingsbury, E5 Pierpont ave. to
 Boulevard
 Klinck, Aa28 Monroe ave. n. to canal
 Kluch Park, B20 Maple south
 Kohiman, O4 North Clinton east to
 North Joiner
 Kondolf, E17 Whitney west to Child
 Kress W8 North av. west to Carter
 Kusse, W29 Neiser east
 Laburnam Z27 Monroe ave. north
 to canal
 La Force Park, O9 North Clinton east
 to North Joiner
 Lake Avenue, K14 State n. to city line
 Lake Avenue Park, F1 Lake av. west
 to city line
 Lake View Park, G5 Lake ave. west
 to Pierpont ave.

Lambert Park, G23 West ave. south
 to Troup
 Langham, P8 St. Joseph west to
 North Joiner
 Langslow, N85 Mt. Hope ave. east
 Lansing, V10 North av. w. to Lincoln
 Lark, C8 Rowe n. to Driving park av.
 Laser, Q5 St. Joseph east
 Laurel, D18 Cameron west to Myrtle
 Lawrence, U20 East ave. north to
 Charlotte
 Lawton, U28 Melgs east
 Leavenworth Place, H9 Ravine ave.
 north to Deep Hollow
 Leighton, Ad14 Garson av. north to
 Parsells ave.
 Leighton Avenue, Aa17 North Good-
 man east to city line
 Leopold, R15 Central ave. north to
 Harrison
 Lester Park, U27 Pinnacle ave. north
 to canal
 Lewis, V14 Davis e. to North Union
 Lilac Park, T30 Yale to Oakland
 Lime, F16 Saxton west to Child
 Lincoln, U10 Hudson pk. n. to Clifford
 Lind, I15 Bolivar west to Oak
 Linden, Q28 Mt. Hope ave. east to
 South ave.
 Litchfield, J20 West av. n. to Brown
 Livingston, M14 North St. Paul west
 to Troup
 Livingston Place, M21 Springs south
 to Troup
 Lochner Park, W9 North ave. east
 Locust, F9 Fulton ave. w. to Thrush
 Loomis, Q8 crossing Clifford north
 Lorimer, H18 Lake ave. west to West
 Louis Park, N10 Oakman north to
 Scrantom
 Lowell, N12 North St. Paul east to
 North Clinton
 Lozier Park, B24 Chili ave. north
 Lyell Avenue, H15 State w. to city line
 Madison, I20 West ave. n. to Maple
 Madison Place, J20 King w. to Madison

Twenty-Five : Years : Ago.

TWENTY-FIVE YEARS AGO the inventors of the "STANDARD" Rotary Shuttle Sewing Machine invented the first high arm machine.

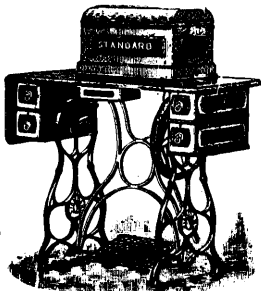
TWENTY-FIVE YEARS AGO the inventors of the "STANDARD" invented the first reciprocating shuttle or lever motion machine. All family shuttle machines except the "STANDARD" are made on that principle to-day.

TWENTY-FIVE YEARS AGO the inventors of the "STANDARD" invented the first drop leaf table for a sewing machine.

TWENTY-FIVE YEARS AGO the inventors of the "STANDARD" invented and made the only machine with adjustable and hardened bearings.

TO-DAY they manufacture the first and only Rotary Shuttle, the "STANDARD."

Three Hours'
Work done in
2 Hours' Time
ON THE
'Standard'



THE
'Standard'
DOES NOT MAKE
SICK NOR KILL
THE OPERATOR.
RUNS LIGHT
AS AIR.

Office 56 West Main St.,
Opp. Roch. Savings Bank.

N. L. PHILLIPS, Manager.

- Magne, I17 Brown n. w. to Lyell ave.
 Magnolia, G29 Cottage w. to Genesee
 Manhattan, S21 Court s. to Monroe av.
 Mansion, L28 Doran pk. s. to Cottage
 Maple, I19 Canal west to city line
 Maple Place, V24 Monroe ave. south
 Maplewood Avenue, H3 Driving park
 ave. north
 Maria, Q19 Sullivan north to Bernard
 Marietta, O15 North St. Paul east to
 North Clinton
 Marion, I24 Reynolds w. to Jefferson av.
 Mark, T9 Hudson east to North
 Market, O18 State east to Front
 Marsh, F32 Brooks ave. north
 Marshall, S22 South St. Paul east to
 Monroe ave.
 Martin, M12 Gorham north to Hart av.
 Mason, G6 Thorn w. to Third
 Masseth Park, D16 Child w. to Murray
 Mathews, T19 East av. n. to Charlotte
 Matilda, Y15 East Main northwest
 Mauder Park, N11 Oakman north to
 Slebert place
 May, N34 Mt. Hope av. e. to South av
 May, J24 Bronson ave. north
 McDonald Avenue, P12 North Clinton
 east to St. Joseph
 McLean, F27 Genesee west
 McLean Place, N30 Mt. Hope ave.
 west to river
 Meigs, W21 East ave. s. to Oakland
 Melrose, D28 Genesee west
 Melville Park, Acl3 Webster ave. east
 Meng Park, Ac13 Webster ave. east
 Merriman, Z20 East ave. north to
 University ave.
 Michigan, B10 Sherman w. to Eleventh
 Mill, O18 Exchange place n. to Brown
 Miller, W10 Bay north
 Monroe Avenue, U23 South Clinton
 southeast to city line
 Monroe Park, U23 Monroe ave. north
 Monroe Place, Q21 South St. Paul
 east to Monroe ave.
 Montrose, H12 Frank west to Sar-
 atoga ave.
 Moore, H15 Lyell ave. south to canal
 Moran, F24 Genesee west to Briggs pl.
 Morgan, H23 Clifton south to Tremont
 Morrill, N7 North Clinton east to
 North Joiner
 Morris, P12 North Clinton east to
 St. Joseph
 Mortimer, Q18 North Water east to
 North Clinton
 Moulson, B16 Jay north to Lyell ave.
 Mt. Hope Avenue, Q23 South St. Paul
 south to city line
 Mt. Vernon Avenue, R31 Cayuga pl. s.
 Mulberry, S30 Oakland park east to
 South Goodman
 Mulliger, B21 Ames west
 Mumford, O18 State east to river
 Murray, D17 Jay north to Lyell ave.
 Murray Park, D15 Murray east
 Myrtle, D13 Lyell ave. north to Otis
 Myrtle Hill Park, E14 Sherman south
 west to Cameron.
 Nagle, V29 Pinnacle ave. northeast
 Narcissa, E30 Anthony s. to Sawyer
 Nassau, R13 Joiner east to Hudson
 Neilson Place, L8 Harris avenue east
 to Conkey ave.
 Neiser, W28 Henrietta ave. south
 New York, H21 Jefferson ave. west to
 Wentworth
 Nichols, Z6 Clifford n. cr. Jennings
 Nichols Park, X25 Monroe ave. north
 to Oxford
 Nicholson Park, S27 Grand south to
 Mt. Vernon ave.
 Ninth, B9 Emerson north to Rowe
 North, T13 North ave. north to —
 North Avenue, R18 East Main north-
 east to city line
 North Clinton, Q18 East Main north
 to city line

All Books,  Periodicals,
1846. 1890.

LARGE STOCK OF STATIONERY,
WHOLESALE AND RETAIL,

At Lowest Prices., E. DARROW & CO., 214 East Main.

The + People's + Favorite.

*THE POPULAR PURVEYOR OF PRECIOUS
JEWELRY.*

MOSE GOODMAN

Is still in the ring with the finest stock of

DIAMONDS AND WATCHES
IN ROCHESTER.

A Dazzling Array of Silverware.

**A TEMPTING ASSORTMENT
OF SUPERIOR JEWELRY.**

Every thing that is Nice, Pretty, and Durable.

SUITABLE ARTICLES for WEDDING GIFTS

Of course you know the location,

No. 7 State Street, - - Rochester.

Watch Department in charge of H. C. WILLIAMS.

- North Fitzhugh**, N19 West Main north to Allen
North Ford, L19 West ave. n. to Allen
North Goodman, X20 East ave. north to Norton
North Joiner, O5 Clifford n. to Norton
North Linden, O4 North Clinton east to St. Joseph
North Poplar, W14 North Union to Hebard
North St. Paul, P18 East Main north to city line
North Stillson, T15 Weld n. to Kirk
North Union, C19 East ave. north to Central park
North Washington, M19 West Main north to Allen
North Water, P19 East Main north to Central ave.
Norton, L3 North St. Paul east to city line
Norwood, Aa19 University ave. north to Anderson ave.
Oak, J17 Allen north to Lyell ave.
Oakland, S30 South ave. east to South Goodman
Oakland Park, R29 Caroline south to Oakland
Oakman, N11 Galusha east to North Clinton
O'Brien, P10 St. Joseph west
Olean, L25 Bronson ave. south to Frost ave.
Ontario, U15 North ave. east to North Union
Orange, G18 Magne west to Child
Orchard, G17 Maple n. to Lyell ave.
Oregon, R15 Central av n. to Harrison
Oriole, D8 Glenwood park north to Driving park ave.
Orlando, D18 Cameron west to Myrtle
Oswego, Ac14 Grand av. to Parsells av.
Otis, E12 Sherman west to city line
Otsego, M17 Center north to Platt
Oxford, Y22 East av. s. to Nichols pk.
Page, E32 Brooks ave. north
Paine, H2 Lake ave. east to river
Pardee Terrace, P5 North Joiner east to St. Joseph
Park, K21 Park place w. to Prospect
Park Avenue, V21 Alexander east to city line
Park Extension, G23 Troup south
Park Place, K21 West ave. south to Troup
Park Row, L8 Nelson place north to Avenue A.
Parsells Avenue, Ac14 Webster ave. east to city line
Pearl, T23 Griffith southeast to Summer park
Pearl Court, T23 Pearl north
Pearl Park, W25 Monroe ave. south to Pearl
Pearl Place, B25 Chill ave. south
Peck, Z14 North Goodman west to Everett
Penn, G24 Jefferson av. w. to Summer
Pennsylvania Avenue, X14 North Union east to North Goodman
Phelps Avenue, H11 Lake ave. west to Backus ave.
Philander, U12 Syracuse n. to German
Pierpont Avenue, E4 Driving park ave. north to Augustine
Pine, N21 canal south to Troup
Pinnacle Avenue, R20 South ave. east and south to city line
Pioneer, C34 Brooks av. to Congress av.
Pippin, Z11 Bay north
Platt, L18 State west to Allen
Pleasant, P18 North St. Paul east to North Clinton
Plymouth Avenue, N21 West Main south to river
Pomeroy, A21 Maple n. and s. to R. R.
Poplar, P28 Gregory south to Linden
Portsmouth Terrace, Z21 East ave. north to Culver park
Post, A25 Chill ave. south
Potter, R22 Howell south to Marshall
Priem Park, N10 North Clinton west to Louis park
Prince, W19 East ave. north to Weld
Prospect, J21 West ave. s. to Adams
Prospect Park, Q28 Sanford south
Pryor, Q12 St. Joseph east to Hanover

**S. GARWOOD LIPPINCOTT,
REAL ESTATE ^{AND} MORTGAGES
174 EAST MAIN ST.**

Putnam, S12 Helena n. to Cleveland
 Qualtrough, C7 Rowe south to canal
 Raines Park, F4 Lake View n. to Birr
 Rauber, P10 North Clinton east to
 St. Joseph
 Ravine Avenue, H9 Lake ave. east
 and west to canal
 Raymond, V80 Pinnacle ave. south to
 city line
 Remsen Place, Aa10 University av. s.
 Reservoir Avenue, P32 South ave.
 east to Reservoir
 Reynolds, J23 West ave. s. to Seward
 Reynolds Place, K4 Beach north
 to Norton
 Rhine, H11 Hanover east to Hudson
 Richard, W26 Boardman e. to Wilcox
 Richmond Park, U18 Scio east to
 Alexander
 Ries Park, D18 Campbell n. to Jay
 Riley Park, F16 Orchard west
 Ritter, P22 Exchange east to railway
 River, O17 North St. Paul w. to river
 Riverdale Place, N15 Cataract south
 to river
 Riverside Avenue, I1 Lake ave.
 east to river
 Rogers Avenue, B13 Wolff n. to Otis
 Rohr, X11 Bay north
 Rome, R16 Clinton place north to
 Central ave.
 Romeyn, I18 Magne west to Grape
 Rose, H2 Lake ave. east to river
 Rowe, G7 Lake av. e. and w. to city line
 Rowley, W23 Park av. s. to Monroe av.
 Rundel Park, Y20 Hawthorn north to
 Culver park
 Rutger, Y24 Park av. s. to Monroe av.
 St. Clair, H23 Clifton s. to Tremont
 St. James Park, F14 Sherman east
 to canal
 St. Joseph, Q15 Central ave. north
 to city line
 Sanford, Q27 Mt. Hope ave. east to
 South ave.
 Sanford Place, P27 n. from Sanford

Saratoga Avenue, G13 Lyell av. north
 to Vernon
 Sauers Park, Q28 Sanford south
 Savannah, T21 Court s. to Monroe av.
 Sawyer, C80 Genesee w to Thurston
 Saxton, G17 Maple north to Lyell av.
 Schauman, N11 Oakman north to
 Siebert place
 Scio, T16 East ave. north to German
 Scrantom, M10 North St. Pauleast to
 North Clinton
 Seager, U29 Cr. Benton and Caroline
 Second, F7 Glenwood av. n to Rowe
 Second Avenue, X13 Pennsylvania
 ave. north to Bay
 Selden, S17 Gibbs east to Windsor
 Sellinger, O11 North Clinton east to
 St. Joseph
 Selye Terrace, F6 Lake ave. west to
 Boulevard
 Seneca, Ac10 North Goodman east
 to Hosford
 Seventh, C9 Emerson north to canal
 Seventh Avenue, Z12 Short n. to Bay
 Seward, K25 Bronson ave. south to
 Genesee
 Shaffer Park, D30 Genesee west
 Sheridan Park, N18 Martine. to Almira
 Sherman, F14 Lyell av. n. to Emerson
 Sherman Place, F14 Sherman east to
 canal
 Short, Z13 Sixth ave. east to North
 Goodman
 Sibley, Ab24 Bates east to city line
 Sibley Place, V21 East ave. s. w.
 Siebert Place, N11 North Clinton west
 Sigel, V12 German north to Bay
 Silver, G20 Maple southwest to York
 Sixth, D9 Emerson north to canal
 Sixth Avenue, Z12 Pennsylvania ave.
 north to Bay
 Skuse Park, S14 Hudson east to
 North ave.
 Smith, I15 State west to Child
 Snyder, G26 Bronson ave. to Strong

If you want a good thing for a little money, call at our
Tailoring Parlors, and examine
our stock of



WOOLENS.



Our stock of **TROUSERINGS** is unsurpassed.
OUR PRICES ARE AS LOW AS THE LOWEST.

OUR MOTTO IS:

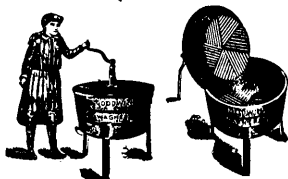
"A Satisfied Customer is the Best Advertisement."

STREET BROTHERS,

Merchant Tailors.

515--517 STATE STREET.

ALMOST MIRACULOUS.
THE EASY-WORKING
Goodwin + Washer.



TWO WEEKS' TRIAL FREE OF CHARGE.

CALL AND SEE IT.

H. F. SEYMOUR & CO.,
Opposite Arcade.

E. J. BARNES & CO.,
48 Genesee Street.

AGENTS WANTED.

Somerset, B28 West av. s. to Chili av.
 Sophia, M19 West Main n. to Center
 South, R21 Court south to Griffith
 South Avenue, R24 South St. Paul
 south to city line
 South Clinton, Q19 East Main south
 to Monroe place
 South Fitzhugh, O21 West Main south
 to Edinburgh
 South Ford, L21 West ave. south to
 Tremont
 South Goodman, X21 East ave. south
 to city line
 South Orchard, G21 Brown n. to Silver
 South St. Paul, Q20 East Main south
 to canal
 South Union, U22 East av. s. to Pearl
 South Washington, N21 West Main
 south to Atkinson
 South Water, P19 East Main south
 to canal
 South York, F25 Moran south to
 Champlain
 Spencer, I14 Lake ave. east and west
 to Lyell ave.
 Spring, N21 Exchange w. to South Ford
 Spruce Avenue, D34 Genesee west
 to Hazel
 State, O19 Center of city n. to Lake av.
 Stepheny's Park, P18 St. Joseph west
 Sterling, B12 Otis north to Villa place
 Stevens, V10 North av. w. to Lincoln
 Stewart, W5 North ave. west
 Stewart, N34 Mt. Hope ave. east to
 South ave.
 Stillson, S17 East avenue north to
 University ave.
 Stone, Q20 East Main south to Court
 Stone Place, H10 Fulton ave. west
 Strathallan Park, X20 East avenue
 north to University ave.
 Straub, E6 Rowe n. to Driving park av.
 Sullivan, O9 North Clinton east to St.
 Joseph
 Sullivan Place, Q10 St. Joseph east
 to Widman
 Summer, G24 Clifton s. to Champlain
 Summer Park, W26 Monroe av. south
 to Richard

Swan, S18 East ave. n. to East Main
 Swinerton, Aa7 Clifford n. cr. Jennings
 Syke, D20 Child west to Ames
 Sylvan, B11 Ames west to Dix
 Syracuse, U13 North ave. east to Scio
 Taylor, F21 Silver north to railroad
 Temple, R20 Cortland e. to Chestnut
 Tenth, B9 Emerson north to canal
 Terhaar Park, P7 North Joiner east
 to St. Joseph
 Terry, B20 Jefferson ave. w. to Brown
 Thayer, Z23 Rutger east to Bowen
 Theodore, Q9 Clifford south
 Third, F8 Glenwood ave. north to
 Driving park ave
 Third Avenue, Y12 Pennsylvania ave.
 north to Bay
 Thomas, R10 Herman n. to Bernard
 Thomas Park, E22 York west to Ames
 Thompson, G13 Lyell ave. north
 Thompson, Acl2 Webster ave. north
 Thompson Avenue, Ad17 East Henry e.
 Thorn, G6 Rowe n. to Driving park av.
 Thrush, E7 Emerson n. to Driving
 park ave.
 Thurston, A26 West ave. south to
 Brooks ave.
 Tonawanda, H19 Brown w. to Maple
 Tower, J6 North St. Paul w. to river
 Tracy Park, V22 Alexander e. to Meigs
 Tremont, K24 Plymouth ave. west to
 Gladstone
 Treyer Park, N8 North Clinton west
 Troup, O21 Exchange to Lamberton
 park
 Trowbridge, K21 West ave. n. and s.
 Tyler, U13 Finney east to Scio
 Ulm, Z10 Bay north to Clifford
 Ulrich, Y8 Clifford north to Jennings
 Union, Z8 Clifford crossing Jennings
 Union Park, S22 South Union east

E. M. SCRANTON, DENTIST.

REMOVED

to

Room No. 14
same floor.

Cor. Main and North St. Paul, Sts.
SECOND FLOOR.

Elevator, No. 6 North St. Paul St.

CROWN AND BRIDGE WORK A SPECIALTY.

Telephone 586.

P. V. HAWLEY.

E. P. WEBSTER

HAWLEY & WEBSTER,

DEALERS IN

ANTHRACITE **COAL** BITUMINOUS

The Very Best Quality. The Very Lowest Prices.

Dry Hard and Soft Wood, Crushed Coke and Charcoal.

ALSO,

Hay, Straw, Oats, Feed, Flour, &c.

Office and Yard 125 Alexander St.

Branch Office 153 East Avenue.

Orders by mail or telephone. All orders delivered promptly.

P. S. WILSON, FIRE INSURANCE,

106 POWERS BUILDING.

FIRST FLOOR.

MAIN ST. FRONT.

Streets

Union Place, Aa19 Culver park north to University ave.

Upity, T12 Grace north to Draper

University Avenue, T17 North ave. east to city line

Upton Park, Y30 East ave. north to University ave.

Van, R23 Alexander s. to Hamilton pl.

Van Stallen Park, Q4 St. Joseph east

Vernon, G12 Bloss w. to Saratoga av.

Vernon Park, O7 North Clinton east to North Joiner

Vick Park, Z22 East av. s. to Park av.

Victoria, G21 S. Orchard to Halbert

Vienna, R12 St. Joseph e. to Hudson

Vienna Place, R12 Vienna north

Villa Place, B11 Gates ave. west to city line

Vincent Place, L14 State east to North St. Paul

Vine, U19 East east to North Union

Violetta, L27 Plymouth av. e. to R.R.

Vosc, S10 Henry east to Hudson

Vought, L17 State w. to Frank

Wabash, Aa12 Seventh ave. east to North Goodman

Wackerman, D18 Campbell n. to Jay

Wadsworth, T10 Hudson e. to North

Wadsworth Square, R22 Howell to Marshall

Wagner Place, C20 Maple s. to Syke

Wait, V13 Scio east to Hebard

Wall, O24 South ave. to May

Walnut, H17 Wilder north to Magne

Ward, O16 North St. Paul east to North Clinton

Ward Park, O14 Ward north

Ward Place, P14 North Clinton west to Ward park

Warehouse, K18 Allen n. to Brown

Warner, C18 Lyell ave. north to Otis

Warren, S29 Oakland park east to Pinnacle ave.

Warwick Avenue, D24 Chili ave. south to Frost ave.

Washington Square, R20 Court south to Wood

Waverly Place, K22 South Ford west to Julia

Webster, S13 Hudson east to North

Webster Avenue, Aa14 North Goodman northeast to Bay

Weeger, S19 Thomas east to Hudson

Weicher, C16 Moulson east

Welder, S27 Cayuga place to Nicholson park

Weld, T15 North ave. east to Prince

Welden Avenue, D34 Genesee west to Hazel

Wellington Avenue, D24 Chili ave. south to Frost ave.

Welstead Park, C7 Oriole west

Wentworth, H21 West av. n. to Brown

Wesley, T18 North ave. northwest to Concord ave.

West, G13 Lyell ave. north

West Avenue, K21 West Main west to city line

West Main, M20 Center of city west to canal

Weyl, Q5 St. Joseph east

Whalin, S28 Averill av. s. to Grand

White, J14 Lake ave. east and west to Frank

Whitmore Park, T27 Mt. Vernon ave. east to Meigs

Whitney, F18 Wilder n. to Lyell ave.

Widman, Q11 Herman north to Sullivan place

Wilcox, X26 Monroe ave. south to Richard

Wilder, E19 Brown west to Colvin

Wilkins, F20 Silver west to Taylor

Wilkins Avenue, S7 St. Joseph east to Carter

Willard Park, E5 Pierpont ave. west to Boulevard

William, S21 East ave. south to Monroe ave.

Willowbank Place, H22 West ave. south to Troup

Willow Park, S30 Yale to Oakland

Wilson, S12 Hudson east to North

Wilson Avenue, Q4 St. Joseph east

"Improvement the Order of the Age."



THE NEW

SMITH PREMIER TYPEWRITER,

Is Unequaled in all Essentials of a Perfect Writing Machine. Speed, Ease of Operation, Permanent Alignment and Durability,
A SPECIALTY.

All the Type Cleaned in Ten Seconds Without Soiling the Hands.

C. E. Dennison,
General Agent.

ROCHESTER OFFICE, - - - NO. 410 POWERS' BLOCK.

Blocks & Halls

Windsor, T17 East Main north to University ave.
 Winterroth, A10 Bay n. to Clifford
 Wolcott, N28 Clarissa s. to city line
 Wolf, C14 Warner w. to Rogers ave.
 Wolf Park, F18 Sherman e. to canal
 Wood, R21 South e. to South Clinton
 Woodbury, S13 Hudson e. to North
 Woodford Place, L9 Harris ave. east to Conkey ave.
 Wren, B4 Rowe n. to Driving park av.
 Wright, E211 Ohio west to Colvin
 Yakey, B18 Campbell north to Jay
 Yale, S29 Oakland pk. e. to Pinnacle av.
 York, F21 West ave. north to Maple
 Zimmer, V11 Bay north to Casper

RECENT CHANGES.

Austin, C14 Lyell avenue n. to Otis
 Block Park, Q29 Oakland park west
 Bolivar, changed to Saratoga ave.
 Bowman, Q6 Hayward park north
 Burke Park, G4 Birr n. to Augustine
 Dengler, G20 Maple s. to Silver
 Dewey Place, A25 Sibley south
 Eisenberg Park, U38 s. Goodman east
 Highlands, The, G5 Lake View pk. n.
 Kosciusko Avenue, F4 Hudson e. to n.
 Oscar, N8 N. Clinton e. to N. Joiner
 Palmer, A17 East Main south to
 Thompson avenue
 St. Stanislaus Avenue, T4 Hudson e.
 to North
 Townsend, R4 Van Stallen Park to
 Norton
 Vettes Park, U18 Schoe. to Hebard.

BUILDINGS, BLOCKS, &c.

American Express, 107 State.
 Baker Block, 50 West Main.
 Brewster Building, 187 East Main
 Briggs Block, 103 West Main.
 Cox Building, E. Main e. N. Water.
 Durand Building, 58 West Main.
 East Side Savings Bank, 281 E. Main.
 Ellwanger & Barry, 89 State.
 Elwood Building, E. Main cor. State.

Exchange Place, 8 to 16 State.
 Hart's Block, 278 East Main.
 Hayward Building, 19 South Clinton.
 German Insurance, 19 West Main.
 Jenkinson, The, 102 Spring.
 Odd Fellows Building, 13 N. Clinton.
 Osburn House, 128 East Main.
 Palmer's Block, 273 East Main.
 Phoenix Building, 11 North Clinton.
 Powers Buildings, Main and State.
 Roch. Sav. Bank, W. Main e. Fitzhugh
 Sibley Block, 318 East Main.
 Smith's Block, 3 to 15 West Main.
 Tallman Block, 27 East Main.
 Trust Building, 25 Exchange.
 Walbridge Block, State cor. Allen.
 Wilder Building, Main and Exchange.
 Y. M. Cath. Asso., 80 West Main.
 Y. M. Christ. Asso., 134 S. St. Paul.

HALLS, &c.

Academy of Music, Exchange Place.
 Baetzel Hall, 309 North Clinton.
 Bijou Theatre, 27 South Clinton.
 Consistory Hall, 77 West Main.
 Damascus Temple, 100 Arcade
 Flour City Hall, 161 East Main.
 Germania Hall, 428 North Clinton.
 Grand Opera House, 15 S. St. Paul.
 Hayward Hall, 19 South Clinton.
 Kolb's Hall, 259 North Clinton.
 Lyceum Theatre, 32 South Clinton.
 Mannerchor Hall, 118 East Main.
 Masonic Temple, 13 Exchange.
 Odd Fellows Hall, 90 State.
 Powers Hall, Powers Building.
 Rockefeller Hall, E. Av. c. Alexander.
 Sibley Hall, Prince c. College Avenue
 Trevor Hall, East Av. c. Alexander.
 Turn Halle, 366 North Clinton.
 Wagner Hall, King cor. Brown.
 Washington Hall, 282 East Main.
 Washington Rink, N. Washington,
 Y. M. C. A. Hall, 84 Court.
 Zoller's Hall 372 North Clinton.



ON + MONTHLY + PAYMENTS,

—AT—

GIBBONS & STONE'S,

110 East Main St.,

MANUFACTURERS OF GRAND, SQUARE AND UPRIGHT PIANOS.

SPECIAL NOTICE. + + + +

THE advertisements in this book represent only
FIRST-CLASS HOUSES, who are foremost in their
respective lines, and we believe readers will find it to
their profit to do business with them.

When calling upon these firms, it will benefit you
and oblige both advertiser and publisher to mention that
you noticed their "ad." in the

ROCHESTER CITY INDEX.

❖ Objects of Interest. ❖

THE POWERS BUILDING stands first among the objects of interest of Rochester, because of its elegant design and appointments, and its prominent location at the geographical and commercial center of the city. It is connected in the halls of each story with the Powers Fire Proof Hotel, which adjoins on Main street. Three large elevators are usually in operation, and the electric current for both arc and incandescent lighting is generated in the basement. Beveled plate mirrors, marble wainscoting, and a large number of valuable paintings distributed through the upper halls, render the interior finish very attractive. The sixth floor has a very fine collection of stuffed birds.

The new steel tower, the highest elevation in the city, raises its visitor to a height of 204 feet from the pavement.

POWERS ART GALLERY is conceded to be first in excellence of the art galleries of America. Thirty rooms on the 5th, 6th and 7th floors of the building are filled with its treasures which have been collected principally from the old world in the space of about ~~twelve~~ years. The entrance room contains the orchestrion, an instrument claimed by its builder to be the most perfect in the world, rendering about sixty selections of music, with the effect of over twenty different instruments and the full text of the composers. The best known collection of photographic views is here, arranged for easy inspection. The consecutive rooms, each designated by its peculiar color, contain many master-pieces of painting and sculpture, with a host of lesser gems and artistic features. No one who reads this should neglect to visit this gallery, of which no short notice can give an adequate idea. It is open daily (except Sunday) from 9 a. m. to 5 p. m. and Tuesday, Thursday and Saturday evenings from October 1st. to May 1st. A nominal admission fee of 25 cents is taken.

The "Art Exchange" in which Mr. Powers has been interested since its commencement, was organized in 1881. By its free classes, exhibitions and meetings, much artistic talent is brought to light. Thirty ladies of culture and influence conduct the Exchange. Its rooms are on the 5th floor of the Building.

Lawyers' Co-Operative Publishing Co.

**GENERAL LAW BOOK SELLERS AND PUBLISHERS,
ROCHESTER, N. Y.**

They publish complete editions of the
U. S. Supreme Court Reports,
N. Y. Common Law Reports,
N. Y. Chancery Reports,
Interstate Commerce Reports,
Lawyers' Reports Annotated, and
Digests of all, besides a
General Digest of all Decisions.

J. E. BRIGGS, Prest.
G. W. WEAVER, Secy.
W. H. BRIGGS, Treas.

A full line of Reports and Text Books,
NEW AND SECOND-HAND,
AT LOWEST PRICES.

W. E. WILLIAMS.

Merchant Tailor,

254 State Street, - Rochester.

JAS. REDMAN TYLER,
ARCHITECT,

HOURS:

**9 to 12 A. M.,
2 to 5 P. M.**

**613--615 Ellwanger & Barry Building,
ROCHESTER.**

THE WILDER BUILDING, an elegant modern office building diagonally opposite the Powers, is very noticeable for its height, eleven stories below the tower, which affords a fine view of the city. Its two elevators, constructed by L. S. Graves & Son of this city, are said to be the fastest in the world.

THE UNITED STATES GOVERNMENT' BUILDING is at the north-east corner of North Fitzhugh and Church streets. Besides the convenient and commodious apartments of the Post Office, it contains offices for the Collector of Customs of the Port of the Genesee (with bonded warehouse in connection,) the Collector of Internal Revenue, United States Court room, etc. The building is about 125 feet square, with covered court in the center; it is built of Middlesex brown stone, and fire-proofed with terra cotta. It cost about \$100,000, and is one of the finest Federal Buildings in the country. About \$75,000 was paid for the site.

THE CITY HALL, on South Fitzhugh St., fronting the Court House, contains the Chambers of the Common Council and Municipal Court, the offices of the various departments and city officials, and in the fourth or upper story an auditorium which will seat about 1150 people, which is accessible for the use of political conventions and charitable entertainments by application at the city clerk's office. The building was erected in 1872 at a cost of about \$350,000.

THE WARNER OBSERVATORY. The most beautiful and expensive private astronomical observatory in the world is located in this city on East Avenue at the corner of Arnold Park. It was erected and is sustained by Mr. H. H. Warner, whose fine residence stands near by. The observatory is under the directorship of Lewis Swift Ph. D., F. R. A. S. It combines in one, an observatory for the instruments and a dwelling for the Director and his family. It is open to visitors on all Tuesday and Friday evenings when the sky is clear, by ticket only, which can be obtained (free) at No. 66 N. St. Paul st.

Besides several comets, nearly 900 new nebulae have been discovered by Dr. Swift and his son Edward, being more than double the entire number discovered on this continent by all other observers. The reputation of this institution is world wide.

ROCHESTER DIRECTORY FOR NURSES.

Nursing of the sick has come to be recognized as a very important part of the means employed for their relief, and restoration to health. The increasing demand for nurses, together with the inconvenience and delay oftentimes experienced in securing them, has led to the establishment, in various cities, of directories for nurses.

The **Rochester Directory for Nurses**, similar to those in other cities, is designed to be in the highest possible degree, a helpful agency in furnishing nurses. Applicants ordering a nurse sent at discretion of the Directory, should state such particulars as will insure suitable selection. Very careful attention is given to the needs of each case. The fee to families is one dollar. Telephone calls answered at any hour of the day or night. Office, 717 Ellwanger & Barry Building, Night and Sunday calls at residence, Telephone 545-o.
Telephone, 545-m. MARY Z. SHERMAN,
Registrar.

J. W. MARTIN & BRO.,

73 STATE STREET.

STEINWAY

CHICKERING

LINDEMAN

STULTZ & BAUER

IVERS & POND



PIANOS

PIANOS RENTED AND SOLD ON INSTALLMENTS.

THE STATE ARSENAL, located at the south end of Washington Square, is now used only as an armory for the Eighth Separate Company, N. G., S. N. Y., (familiarily known as the Selye Citizens Corps) and for the recently mustered First Separate Company, which consists of many of the prominent young men of the city. In January, 1890, the Governor issued an order forbidding the use of the building for entertainments or any other purpose except for these military organizations. No arms are stored here except those of these companies, and one field-piece which is the property of Reynolds' battery, brought from the war by them.

MONROE COUNTY BUILDINGS. The Court House that stands opposite the Powers Hotel on West Main street, with the massive fluted columns of stone, was finished in 1851. Its cost was nearly \$70,000 of which the city paid \$33,500, it being used for both city and county seat. Considered magnificent only a few years ago, it will doubtless give place in a short time to a more modern and fire-proof structure. The other county buildings are all of quite recent erection.

The Jail is located on Exchange, a short distance south of Court street. It is well arranged for the safe keeping, as well as comparative comfort of prisoners detained within its walls. Visitors can obtain tickets of admission at the Sheriff's office in the court house. Those wishing to confer with any of the prisoners, will only be admitted on Tuesdays and Fridays.

The Penitentiary, Alms house and Insane Asylum are located on South Avenue, near Highland Avenue. Visitors are admitted on any day but Sunday, without preliminaries. The inmates of the penitentiary number about 275 and are made useful in the manufacture of hosiery and cane-seating chairs. The capacity of the building is about 400. The Alms house has the same capacity with an average of over 300 occupants. The Insane Asylum has 300 patients and not room for more.

MOUNT HOPE CEMETERY contains over 200 acres of ground and is said by visitors to be one of the most beautiful in the country. It is owned by the city of Rochester and governed by commissioners appointed by the Common Council. Aside from the natural beauties

ENGLEWOOD FARM.

ENGLEWOOD FARM HOUSE.

ENGLEWOOD BEACH.

ENGLEWOOD FOREST.

ENGLEWOOD ASSOCIATION, ROCHESTER, N. Y.

of the ground and trees, there are some fine specimens of marble work, among which are the names of Hartwell, Carver, Ellwanger, Erickson, Hathaway, Brewster, Roth, Semple, and others. Visitors are admitted freely, but no picnicing or lounging is allowed, and carriages are not admitted on Sunday. A neat pamphlet containing the rules and regulations is furnished on application at the office.

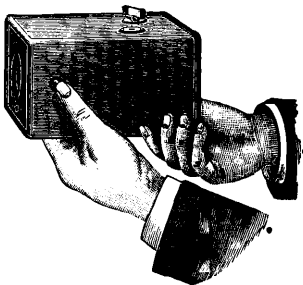
The nursery grounds of Ellwanger & Barry occupy a large tract of land between South and Mt. Hope avenues. They are quite beautiful, and nicely kept, and have an extensive collection of trees and shrubs, from all parts of the world. Visitors are not admitted on Sundays, but are freely welcomed on other days, especially those interested in tree culture.

W. S. KIMBALL'S GREENHOUSES are located on Olean St. from Bronson avenue to Cady street. They are of great interest, owing to their extent, and the rarity of the specimens. The orchid house contains the finest private collection of orchids, and the lily house the finest variety of lilies in the United States. The colored water lilies are a notable feature, also the Egyptian Lotus and Papyrus or paper-plant. Visitors are admitted without preliminaries, but not later than 4 P. M., nor on Sundays.

WARD'S MUSEUM or natural science establishment is located on College avenue, opposite Anderson Hall. The several buildings are devoted to valuable collections of geological specimens, which is a prominent feature of the business of the firm. Natural history specimens in the line of skeletons, skins, models and stuffed animals, are supplied to educational institutions in all parts of the land. A nominal admission fee is collected from visitors, who are attended by a person to explain the features of interest.

The old house called "Lake View" built in 1828 by Lindley Murray Moore, (father of Dr. E. M. Moore, sr.) stands upon the highest point of ground in the city, north of Mount Hope. It is now the residence of J. E. Briggs, Esq. The location has since been known as "Lake View Park," and the splendid prospect and pure atmosphere obtained here make it a marvel that there are yet building spaces to be had.

New Kodak Cameras.



“You press the button.
We do the rest.”

(OR YOU CAN DO IT YOURSELF.)

Seven New Styles and Sizes

ALL LOADED WITH

Transparent Films.

For sale by all Photo. Stock Dealers.

Send for Catalogue.

THE EASTMAN COMPANY, Rochester, N. Y.

↗ Parks, Falls and Bridges. ↖

THE GENESEE VALLEY PARK, located on both sides of the river from the state dam south, about two miles in length, contains 276 acres of land and 60 acres of water, with a grove of about ten acres of native forest trees, many fine specimens of which are scattered about the large meadows. Roadways are finished to some extent and are being rapidly extended. Steamboats ply the river in the summer season, from the park southward several miles. Canoe and rowing clubs will have their houses on the west bank of the river near the dam. The ball grounds are located west of the river south of Elmwood avenue. Tennis grounds and the little children's play grounds are located on the east bank of the river and near the grove. The Park is reached in five minutes from the W. N. Y. & P. or the N. Y. L. E. & W. depots, or by the Plymouth avenue car line on the west or Mt. Hope ave. car line on the east.

THE HIGHLAND PARK, comprising 57 acres of the beautiful undulated ground surrounding the Hemlock Lake reservoir, is reached by the South avenue car line. A magnificent view of the city, Lake Ontario and the charming country lying southward, can be obtained here on a clear day. A small grove of about five acres is situated on the highest point in the park, 342 feet above Lake Ontario and 289 feet above the ground at Powers Block. *See map* 53

SENECA PARK comprises about 155 acres lying on the east bank of the river, from Avenue B northward to what is called the "Rifle Range," and 45 acres on the west bank from Driving Park avenue north to the road leading to Hanford's Landing. The upper part of the eastern section is narrow, a carriage drive and a foot path leading northward from Avenue B to the lower part which extends from the river to the R. W. & O. Railroad, and contains three fine groves of forest trees and numerous springs of cold water, a great variety of wild flowers and shrubs. The R. W. & O. Railroad sells tickets to "Seneca Park," or it may be reached by the North St. Paul St. car line or the Lake Avenue line on the west. Grand views of the river scenery can be obtained from the walks along these banks. A steam-

FURNITURE, CARPETS, LACE CURTAINS, DRAPERIES, PICTURES and FRAMES.

New Stock, Latest Styles,
Attractive Designs, Low Prices,

We occupy three stores—basement and five floors each—giving eighteen floors for manufacturing, storing and displaying goods.

OUR FACILITIES ARE FIRST-CLASS.

Our inexpensive location enables us to transact business at an unusually small percentage for expense. We give our customers the advantage of this. Elevator connects the five floors.

PRICES ON EVERY ARTICLE IN PLAIN FIGURES.

H. B. Graves' Home Furnishing House,

262, 264 & 266 STATE STREET, ROCHESTER.

One Minute's walk north of Elevated Railroad Tracks.

boat ride down the river affords an elegant panorama of beautiful foliage at certain times of the year.

GENESEE FALLS. There are three falls in the Genesee river in this city. The main or upper fall measures a height of 94 feet, and when water is plenty, forms a beautiful sight. It is just below the Central Railroad bridge, and may be viewed nicely from Cataract street, or the Platt street bridge.

The middle fall is in the vicinity of Glenwood park, is only about twelve feet high, and not very noticeable.

The lower fall is perhaps the most beautiful, owing to the form of the rocks, and its rustic surroundings. Even when the river is low it is a pretty sight. The location is immediately south of the Driving Park avenue bridge, and the height of the fall is 96 feet. The total decline of the river in the city is about 225 feet.

THE ELMWOOD AVENUE BRIDGE crosses the river at the south boundary of the city. It is a fine structure, built in 1888 by the county of Monroe; its length is about 350 feet.

CLARISSA STREET BRIDGE reaches a length of 472 feet and was **built in 1862, of the style known as the bow-string truss.**

COURT STREET BRIDGE, of the same style, was built in 1860, and is 420 feet in length. This bridge will probably be succeeded in a few years by a stone structure of some kind.

THE AQUEDUCT, one of the most remarkable features of the "Flour City" in its earlier days, stands as a monument to the memory of Richard Gorsline, the pioneer contractor. It is a massive stone structure, whose graceful arches remind the observer of early European architecture. It is located between Court and Main streets, and readily found on the map (P20), forming the bed of the Erie Canal over the river. It is also serviceable to foot passengers and bicycles. **Built of Lockport limestone and finished in 1842; cost, \$600,000.**

THE MAIN STREET BRIDGE, which the passenger is not likely to discover, reaches 212 feet on East Main between Front and Water streets. It is of stone arches, was built in 1856, and in 1863 increased to the full width of the street, the space on either side being occupied

PICTORIAL WORK.

NEW DESIGNS.

ALFRED A. MATTHEWS,

✦ SIGNS, ✦

BANNERS,

97 STATE STREET,

OVER DAVIS' DRUG STORE.

RANGER & CORNELL,

PHOTOGRAPHERS,

16 STATE STREET, ROCHESTER.

POWERS HOTEL

TURKISH

and

RUSSIAN



BATH



A. F. NISBET, - PROPRIETOR.

14 North Fitzhugh Street.

HOURS:

Ladies, 9 to 12 a. m., except Saturday and Sunday. Monday evenings, from 6 to 10.

Gentlemen, 1 p. m. to 8 a. m. Saturdays from 9 a. m. all night.

SPENCER, the Chiropodist, always in attendance.

by business blocks, built on stone piers from the bed of the river and hiding it from the view of the people on the bridge.

ANDREWS STREET BRIDGE is 280 feet long, built about 1858.

PLATT STREET BRIDGE, now in process of erection, crosses the river to Cataract street, and is a fine specimen of modern science, of the style known as Latticed Truss. Its length over all is 858 feet; height from river bed, 120 feet.

VINCENT PLACE BRIDGE, built in 1873, was an object of interest for several years, on account of its length (over 900 feet) and its height of over 100 feet from the bed of the river.

DRIVING PARK AVENUE BRIDGE, built in 1890 is of great interest, giving the passenger an elevation of 200 feet above the river bed, close to the lower Genesee falls. The shore spans are latticed truss, and the central span is an arched truss. Its total length is 717 feet. It affords a fine view of river scenery.

Beside the nine mentioned above, there are three railway bridges over the river in the city. The numerous lift-bridges over the canal are an interesting feature, as they are here used more generally and successfully than in other cities.

↪ City Government. ↩

Mayor, WILLIAM CARROLL,	1 City Hall.	Salary, \$3300
Treasurer, V. FLECKENSTEIN,	9 " "	" 4500
Clerk, PETER SHERIDAN,	20 " "	" 2000
Messenger, F. J. IRWIN,	20 " "	" 1200
Attorney, C. B. ERNST,	19 " "	" 4200
Surveyor, OSCAR H. PEACOCK,	16 " "	" 2500
Superintendent of Police, J. P. CLEARY,	12 " "	" 2500
Chief Eng. Water Wks., J. N. TUBBS,	23 " "	" 3000
Fire Marshal, ARTHUR McCORMICK,	20 " "	" 1200
Chief Eng. Fire Dept., SAMUEL BEMISH,	88 Front St.	" 2250
Supt. Fire Alarm Tel., C. R. BARNES,	88 " "	" 1800
Overseer of the Poor, B. RITZENTHALER,	96 " "	" 1700

**HENRY TOOTHILL,
ELECTRO-PLATER,
214 South St. Paul St.,**

SPECIALTIES:

**RE-PLATING TABLE WARE,
REFINISHING CHANDELIERS, BRONZES, FIRE SETS,
AND ALL KINDS OF BRASS WORK.**

Lake and South Avenue Cars pass the Door.

**HACK, † COUPE † AND † LIVERY
STABLES**

Single and Double Turnouts,

OF EVERY DESCRIPTION.

**CITY † BAGGAGE † AND † HACK † LINE.
WALKER S. LEE & SON.**

296-298 CENTRAL AVENUE.

Telephone, 524 a.

FINE CARRYALLS AND MOVING VANS.

WE KEEP FORTY HORSES.

Monroe County Detective Agency.

319 Powers Building,

ROCHESTER, N. Y.



JOHN S. STOTT,

WILLIS A. WRIGHT.

**We attend to all kinds of Legitimate Detective Work in all parts of
the United States and Canada.**

All communications Strictly Confidential.

THE EXECUTIVE BOARD consists of three members, one of which is elected annually, for a term of three years. Salary \$2500.

THE COMMON COUNCIL consists of one alderman from each of the sixteen wards of the city, who are elected annually, and receive a compensation of \$720 a year.

Police Department.

The Police Protection consists of 120 men including eight detectives. About forty are on duty during the day and the rest at night. They are paid \$75 per month and appointed by the police commissioners. J. P. Cleary is superintendent, Charles McCormick, captain, and J. C. Hayden chief of detectives.

The police station is located in the first story of the city hall, on Irving Place, with the police court rooms in connection. At the city building on Front street is the patrol house, attended by five officers with a patrol wagon and horses ready for call. Thirty telegraph boxes are located in various parts of the city, to which policemen have keys and can summon wagon and officers without delay in case of any disturbance. Victims of accidents are now taken home or to the hospital in the free ambulance instead of the jolting patrol wagon as formerly.

Fire Department.

Besides headquarters at the city building on Front street, there are 12 separate houses located as follows:

Hose and steamer, No. 1,	Stone street near Court.	
Hose and steamer, No. 2,	North Clinton opposite Lowell.	
Hose,..... No. 3,	Platt street near State.	
Hose and steamer No. 4,	South Ford near West Ave.	
Hose 5 and steamer No. 3,	Lyell avenue near West.	
Hose,..... No. 6,	Culver Park near Pourtasmouth Ter.	
Hose,..... No. 7,	Plymouth Ave. near Bartlett.	
Hose,..... No. 8,	Grand street.	
Active Hose,	} volunteer companies, {	N. St. Paul near Main
Alert Hose,		North Fitzhugh near Main.
Protectives (Patrol)		North Fitzhugh near Main.
Hook and Ladder Truck, No. 1,	Front St. opposite Market.	
Hook and Ladder Truck, No. 2,	Stillson St. near Main.	
Hook and Ladder Truck, No. 3,	Lyell avenue near West.	
Extinguisher, (chemical)	Front St. opposite Market.	

ASK YOUR GROCER FOR OUR GOODS.

"HYGIENIC MILLS"—(Our Trade Mark)

ENTIRE WHEAT. Something New. Superior to Buckwheat Flour for Griddle Cakes. Makes delicious Bread, Breakfast Rolls, Gems, Tea Biscuit.

WHEAT MEAL. "Kelly's Original Dansville Graham"—Best in the market,—from choice selected white wheat—a pure wheat meal.

CORN MEAL. A superior brand of Yellow Corn Meal, for family use—granulated—in 5 and 10 lb. packages.

FAMILY FLOUR. The degree of satisfaction which is daily expressed by the consumers of our flour, speaks well of its quality.

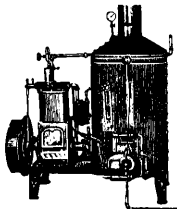
JAMES GORSLINE,

'286-288 Lake Avenue.

Successor to J. O. Kelly & Co.

Bryant's : Improved : Safety : Engine.

Automatic. High Speed. Two to Five-Horse Power.



KEROSENE OIL FOR FUEL.

NO SPARKS, ASHES, DUST OR SMOKE.

Has no superior for Economy, Workmanship, Durability or Price.
Thoroughly tested before leaving the works, and guaranteed.
Latest Improved Sectional Boiler, Absolutely Non explosive.

Send for Circular to

BRYANT SAFETY ENGINE WORKS,

ROCHESTER, N. Y.

The force consists of about 110 men, whose pay is \$67.50 per month, with a slight advance for the officers. Candidates are received on probation after civil service examination, and if they show proper qualifications are appointed as firemen by the Executive Board.

There are about 125 Fire Alarm Boxes distributed through the city, keys to which are carried by policemen, and kept by residents near the box. When the key is used, it can only be removed from the lock by a chief fireman, the number on the key proving who gave the alarm. When the lever is once pulled, the clock work in the box proceeds to strike its number four times upon the small bell in the box, and upon the gongs in all the engine-houses and the City Hall bell, simultaneously, during which all the other boxes in the city are cut out of circuit. The system is tested continually every half hour by an automatic clock at head-quarters, and any accident to the wires receives prompt attention.

Water Works Department.

THE HEMLOCK SYSTEM consists of a pipe-line from Hemlock Lake, about 30 miles south of Rochester, a reservoir of about 75,000,000 gallons capacity at Rush, 10 miles south of the city, and one of 25,000,000 gallons on Reservoir avenue. The descent from the lake to the consumers is about 400 feet; the cost of the system was over \$4,000,000. Water is supplied by the year for all household uses, and by meter for manufacturers and large consumers, at the rate of 14 cts. per 1000 gallons. The meter service is being increased as fast as practicable and will soon be in very general use. Residents are permitted to sprinkle their lawns (on payment of \$4.00 for the season for a 50-foot lot). But the Holly water is used for street sprinkling and other purposes as far as practicable. There are over 200 miles of Hemlock water mains in the city.

The city reservoir, near South avenue, is a very pleasant and interesting point to visit; the fountain, by which the water is aerated, is one of the largest and most beautiful in the country. It can be easily seen over ten miles away.

THE HOLLY SYSTEM consists of about 13 miles of pipe which ramifies the business portion of the city, in which an ordinary pressure of

WHEN in the course of human events, the reader of this page has occasion to have something printed, he is respectfully invited by the publisher of this book to call on us, at the address below, and communicate his desires and obtain rates and information regarding the same.

PAMPHLET WORK IS OUR STRONGHOLD.

MERCANTILE,
LEGAL,
EDUCATIONAL
AND SOCIETY

SOUVENIRS,
MEMORIALS,
AND OTHER
ORNAMENTAL

PRINTING

ALL KINDS OF

Pamphlet Work

OUR "HOBBY."

Fancy Bindings & Specialty.

No. 76

STATE STREET

OPP. CHURCH STREET.

(Elevator to Office.)

HOWARD L. WILSON & CO.

Have recently introduced a Wire Stitching Machine, which greatly facilitates the rapid production of Pamphlet Work.

Can execute Catalogues and other Illustrated Pamphlets in proper style, and at correct figures.

We are sometimes called upon to compile works of this kind for customers who have not time to do it; also, to prepare engravings and designs. Our rates for this service are very reasonable.

about 60 lbs. to the square inch is maintained continually by means of two immense pumps operated usually by the water power at the station (foot of Platt street, (M17). Beside these stands another, of like dimensions, attached to a steam boiler plant of about 400 horse power; this is used in case of fire. A large steam engine is attached to the first named, when the water power is insufficient.

The water is taken from the river, and the hydrants on this system may be distinguished by the tops painted red. Aside from extinguishing fires, the Holly pressure is used to operate elevators and lift-bridges. The fire-hydrants in the outer portions of the city, are on the "Hemlock" or domestic system, and are uniformly painted green.

The Chamber of Commerce.

Is an Association of the business men of Rochester for the object of helping to develop the natural advantages of the city and its neighborhood, to increase the commerce and business, and in general to help do whatever will make the city more attractive for living in or doing business in.

There are over three hundred memberships and as each membership admits all of the partners in the concern, there are probably at least one thousand of the active business men of the city who are affiliated with the association.

Any persons or firms connected with the trade or commerce of the country, and doing business in Rochester, are invited to become members upon payment of annual dues of \$20, without any initiation fee.

Manufactures.

Rochester is noted as a manufacturing town, so we give a few of the prominent lines in which there are many hands employed and much capital invested: Clothing and Shoes take the lead in importance; Machinery, Stoves, Furniture, Tobacco and Malt Liquors, Carriages, Edge Tools, Mill Products, Dry Plates and Photographic Apparatus, Lamps and Lanterns, Optical Goods, Pianos, Engines and Boilers, Sanitary Appliances, Sewer Pipe, Leather, etc.

DO YOU WANT to Sell, Exchange, Buy or Rent a **HOUSE, LOT, FARM, OR ANY REAL ESTATE ?**

We have Desirable Houses for Rent and Sale, and an attractive list of other property. We take special pains to show our property by our own conveyance.

PAYNE & BEAGLE,

III POWERS BLOCK,

FIRST FLOOR.

WM. M. BENNETT,

ELECTRICIAN,

423-429 Powers Block.

ACUTE AND CHRONIC DISEASES

Successfully treated by the application of Electricity. When scientifically applied it is the Safest, most Reliable and most Universally Beneficial of all curative systems yet known to mankind.

ELECTRO CRANIAL DIAGNOSIS. Diseases accurately determined and located by the skillful application of a mild current of Electricity to centers of sensation on the head, corresponding to the internal organs. **CONSULTATION FREE.**

Christian : Reform : Association of Monroe County.

RESTAURANT —AND— **Temperance Hotel.**

**QUICK SERVICE, CHEAPEST, AND BEST,
IN CITY OF ROCHESTER.**

36 TO 40 EXCHANGE STREET.

Rooms 25 and 35 Cents Per Day. NEWLY RENOVATED.

EDUCATIONAL INTERESTS.

There are besides the Free Academy, 32 public schools and five orphan asylums. Average daily attendance, about 13,000.

The salary of teachers in grammar schools averages: Male principals, \$1,000 to \$1,500; female principals, \$500 to \$700 (Nos. 7 and 18, \$1,000 and 1,250); assistants, \$250 to \$450.

Free Academy, \$600 to \$2,200.

Supt. Public Instruction, S. A. ELLIS. Office, Free Academy Building. Salary \$2,400.

PUBLIC SCHOOLS.

NO.	LOCATION.	PRINCIPAL.	TEACHERS.
1	133 Exchange	Miss A. H. Cozzens,	4
2	King street,	Miss E. A. Hayes,	8
3	Tremont street,	James M. Cook,	15
4	Jefferson Avenue,	S. C. Pierce,	22
5	Jones cor. Dean,	P. H. Edick,	11
6	Lyell cor. Frank,	J. L. Townsend,	19
7	Lake Avenue,	Mrs. A. M. Lowry,	15
8	N. St. Paul near Tower,	Miss Lottie Snell,	5
9	St. Joseph street,	E. M. Sparlin,	21
10	North Clinton,	G. H. Walden,	12
11	Chestnut cor. James,	Miss M. A. Hayden,	5
12	Wadsworth square,	M. W. Way,	13
13	Hickory street,	G. F. Flannery,	17
14	Scio street,	R. A. Searing,	22
15	Monroe ave. near Alexander	J. W. Osborn, Jr.,	20
16	North street,	Miss Nellie E. Farber,	9
17	Orange street,	18
18	North ave. cor. Draper,	Miss Sarah Shelton,	23
19	Seward cor. Magnolia,	Miss F. A. Reichenbach,	9
20	Oakman near N. Clinton,	Miss Delia Curtice,	20
21	Wackerman street,	Miss E. J. Kewin,	7
22	St. Joseph street,	Miss F. A. Havill,	7
23	Park ave. near Bowen,	Miss S. A. Nash,	3
24	Meigs near Benton,	Miss N. F. Cornell,	13
25	N. Goodman cor. Bay,	Miss H. A. Wedd,	3
26	Clifford cor. Thomas,	S. P. Moulthrop,	15
27	Central Park,	Miss C. M. Coote,	9
28	Bond cor. Averill ave.,	Miss C. M. Gillette,	5
29	Moran street,	Miss E. Della Brown,	7
30	Otis near Sherman,	Miss S. Hoekstra,	5
31	University avenue,	Mrs. A. M. Galbraith,	9
32	Plymouth av. cor. Bartlett,	Miss M. H. Oswald,	9

AT THE OPENING OF TWENTY-SEVENTH YEAR, SEPT. 1890, THE

Rochester Business University.

entered the finest quarters in the United States used for such a purpose, which have been built expressly for it. Everybody who knows anything of the institution or its graduates understands the superiority of the instruction it provides. In this regard it has long stood at the head.

If you contemplate attending Commercial School, It will pay you to visit this great school before deciding where, though you may live a thousand miles away. A thorough examination of this institution and comparison of it with ALL OTHERS. will help you to promptly decide the question. Illustrated Circulars Free.

WILLIAMS & ROGERS, Rochester, N. Y.



Are a blessing when they work. "THE RIVAL" is one that is warranted to work satisfactorily and can be had at

SCRANTON, WETMORE & CO'S,
41 STATE STREET,

For One Dollar and Fifty Cents. (Ordinary Price \$2.50.)

HEADQUARTERS FOR ALL KINDS OF STATIONERY.

I'M GOING TO MAXSON'S



FOR A
STAMP,
SEAL PRESS,
STENCIL,
and a whole set of
OFFICE SUPPLIES.
So Don't Detain Me!
24 Exchange St.

THE ROCHESTER FREE ACADEMY was organized in 1857. It occupies the modern four story building on South Fitzhugh street next to Rochester Savings Bank, which was built for it in 1873 at cost of about \$128,000.00. There are four courses of instruction, viz. Classical, Latin Scientific, Business, and College Preparatory. Prof. J. G. Allen is principal; eighteen other teachers are employed. Pupils are received from the city schools upon the "regents" examination. Those whose parents live out of the city must pass an entrance examination and pay tuition according to rules of the Board of Education.

THE UNIVERSITY OF ROCHESTER is situated on University Avenue, the Campus comprising the square on the north side of that street between Prince and Goodman streets. The President's mansion, also owned by the University, is on the northwest corner of University Ave. and Prince St. On the Campus are Anderson Hall, containing recitation rooms, chapel, etc., flanked on the west by Sibley Hall, containing the Library and the Cabinets of Mineralogy, Geology and Palæontology, and Natural History, and on the east by the Reynolds Memorial Laboratory, very completely adapted for laboratories of Qualitative and Quantitative chemical analysis and assaying. These are all of Medina stone. There is also the Trevor Observatory, with a fine Alvin Clark telescope.

The University was founded in 1850, and has been built up largely through the efforts of the late President, Martin B. Anderson, LL. D. It has accumulated a property of about \$900,000, and has graduated nearly a thousand alumni in its classical and scientific courses. It has now thirteen officers of instruction, and nearly 200 students. The University is controlled by the Baptist denomination, but is not sectarian in its instruction, nor exclusively Baptist in either its trustees, faculty or students. Free scholarships are awarded each year to several graduates of the Rochester Free Academy.

ROCHESTER THEOLOGICAL SEMINARY comprises Rockefeller Hall cor. East ave. and Alexander st., (gift of John D. Rockefeller Esq. of Cleveland); Trevor Hall and the Gymnasium adjoining on Alexander st., (gift of John B. Trevor Esq. of Monroeville) and the old Tracy Seminary building, cor. Alexander and Tracy park, which will give

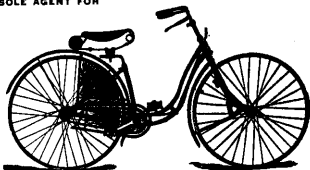
HUGHES' BICYCLE HALL

67-69 EXCHANGE STREET.

LADIES AND GENTLEMEN TAUGHT TO RIDE.

SOLE AGENT FOR

Columbia,
Rambler,
Peerless,
Juno,
Crescent,
Hartford,
Little Giant,
Victory, and all popular makes.



FRANCIS L. HUGHES,

Wheels sold on the installment plan.

67-69 Exchange st.

AN APT ILLUSTRATION

of the Superiority of Insurance in the

Total Abstinence Life Association OF AMERICA.

Notwithstanding the general prevalence of the influenza last winter, our death-rate for the months of January, February and March, 1890, is no greater than during the same months of 1889.

In Associations which admit drinking men, and in the old line Companies, the death-rate in 1890 for the months named is greatly increased over that of 1889, in some instances being more than doubled.

Our death-rate in 1889 was Five per thousand, and the prospect now is that it will not exceed that very low rate for 1890.

The average death-rate in the old line Companies for 1889 exceeded Fourteen per thousand, and in Associations which have not the Total Abstinence requirement, was fully as great.

Our Total Abstinence requirement is an exceedingly important factor, which makes our Co-operative insurance cheaper and more reliable than any other.

Cheaper, because we pay for only the actual death-losses, and our low death-rate means small cost to the insured.

More Reliable, because of the intelligence and moral worth of our members who are all total abstainers, and who appreciate the fact that our plan is founded in equity, and based upon correct business principles.

Send for circular, to H. L. Wilson, 76 State Street, Rochester, or to

WM. F. SINGLETON, Pres't, 903 Royal Insurance Building, Chicago.

place this year to a new building costing \$35,000. Rockefeller Hall contains a chapel which will seat 200 people, recitation rooms, and a fire-proof library containing upwards of 24,000 volumes. The average attendance is about 100 students from all parts of the United States and Canada. Founded in 1850, it has trained over one thousand men for the Gospel ministry. It is maintained and controlled by the Baptist denomination, and its endowment is over \$500,000.

THE BUSINESS UNIVERSITY, located in the Y.M.C.A. building, is one of the largest and best schools of the kind in the United States.

There are also in Rochester many excellent private schools, of all grades, from the primary kindergarten to the Collegiate institute.

THE ACADEMY OF SCIENCE is designed to include persons having ability and desire to engage in its pursuits, who may become members by vote of the society. It comprises several sections devoted to separate branches; as Microscopy, Photography, Astronomy, Botany, Entomology, Taxidermy, Zoology, &c. It is one of the largest organizations of the kind in the United States and is incorporated. The rooms are in Anderson Hall at the University of Rochester. Regular meetings are held on the second and fourth Mondays of each month, to which the public are invited.

The separate sections hold independent meetings at various places, in pursuit of their special branches. A reception is usually given each year at which the work of all the sections is represented.

Prof. H. L. Fairchild is president, and Prof. A. L. Arey, secretary.

THE MECHANICS' INSTITUTE, Organized in 1885. Its object is to promote practical education, enabling its attendants to become better fitted for their occupations in life. The means for carrying out this object are, a school for drawing and designing, lectures and discussions on practical subjects, etc., during the school year, which extends from the 1st of October to the 1st of May.

The evening classes are principally intended for those for whose industrial pursuits the instruction in drawing, design and modeling is important, and who cannot attend the day classes. The instruction in them is free. Any person of the age of fifteen years or over, of good moral character, may join the school.

SCRANTOM, WETMORE & CO.
41 STATE STREET.
ROCHESTER, N. Y.

DECEMBER 6, 1888.

HOWARD L. WILSON,

Dear Sir:—Your Guide book and Map of Rochester is a good thing as a convenience to the public at a trifling cost. It is creditable alike to your enterprise and taste and we are pleased to learn of your intention to publish a revised edition. Its merits bespeak a large sale and we trust that your expectations regarding it will be more than realized.

Very truly yours,
SCRANTOM, WETMORE & CO.

STEELE & AVERY,
BOOKSELLERS, STATIONERS, PUBLISHERS,
46 & 48 STATE ST.

ROCHESTER, N. Y., Dec. 7, 1888.

MR. HOWARD L. WILSON,

Dear Sir:—Your City Index and Guide book is one that does and will sell, notwithstanding the prominence of the advertisements. You are to be congratulated upon the success it has attained, and encouraged to produce a new and improved edition.

Those who aid you in this enterprise are serving the public as well as themselves.

STEELE & AVERY.

Each class meets two evenings in the week, from 7:30 to 9:30

The evening classes are, Frechand, Design, Mechanical Machine, Architectural, and Modeling in clay.

The course for the day classes is similar to the above, but more time can be given to individual instruction than in the evening. A small admission fee is charged in these classes. There are two terms of four months each. The first begins the last of September; the second the first of February. The number of attendants averages about 500. The instructors are E. C. Colby, Principal; Eben Rose, Vice Principal; Laura E. Palmer, and Edwin S. Gordon, with pupils as assistants. Henry Lomb is President; and Wm. F. Peck, Corresponding Secretary.

THE WESTERN NEW YORK INSTITUTE FOR DEAF-MUTES Is a private corporation, for the education of the deaf. Located at 945 North St. Paul street, it is reached by the St. Paul and Caledonia Avenue street car line. It was founded in 1876. During the past year (1889,) 176 pupils were present, principally from Western New York. Pupils from other states are also received. Its pupils are taught speech, industries, and are given kindergarten, common school, and academic educations. Exhibitions of school work are usually given on Friday afternoons from 2 o'clock to 4, to which visitors are invited. Visitors especially interested in the education of the deaf are always welcome.

THE STATE INDUSTRIAL SCHOOL is located on Backus avenue, (GII) and is intended to give efficient, moral, intellectual and industrial training to the children committed (by courts) to its care. The teaching of the principal industrial trades is given special attention in shops which are well equipped, and in care of competent instructors. A recently formed military organization is now in successful operation.

The total number of inmates is over 700. The managers are: J. D. Decker, G. F. Yeoman, E. B. Chace, V. F. Whitmore, E. M. Moore, Jr., Wm. Purcell, H. Kohlmetz, J. Miller Kelly, F. S. Minges, Henry Lomb, M. H. Briggs, Thos. Raines, Jonas Jones, Isaac Gibbard, M. Barron. They are appointed by the Governor and serve without pay. Visitors should obtain a permit from one of these gentlemen, which will give them admission and attention at the school.

JACKSON'S
TEMPERANCE & HOTEL,
AND RESTAURANT,

(EUROPEAN PLAN.)

212 EAST MAIN STREET, OPP. WHITCOMB HOUSE, ROCHESTER, N.Y.

Rooms, 35c. 50c. and \$1 per Day.

J. M. CHEESMAN,
J A P A N N E R,
Job Japanning Done to Order.

ALSO, ALL KINDS OF LACQUERING.

WORKS, 119 EXCHANGE ST., - ROCHESTER, N. Y.

Collections promptly made
in all parts of the country.

Practice in all the Courts of
this State and U. S. Courts

-:- Edwin B. Fiske, -:-
Attorney and Counselor, - - - 31-32 Smith's Arcade.

- MANAGER - OF - THE -

Rochester, Buffalo and Syracuse Real Estate Company.

Have always a large list of all kinds of Real
Estate for sale and exchange. Houses to
rent in all parts of the city. Call on us
before purchasing or renting.

ALL BUSINESS PROMPTLY AND CAREFULLY ATTENDED.

Public Charitable Institutions.

THE ROCHESTER CITY HOSPITAL, (J21) is located on spacious grounds, extending from West Avenue through to Troup street. It has accommodations for 150 patients, who are cared for at prices from \$4.00 to \$15.00 per week. Those who are not able to pay, receive free treatment in the "Out patient's department" under the care of specialists of the first rank.

The Hospital consists of the male and female medical, male and female surgical wards, children's pavilion, maternity hall and nursery.

In 1880 a training school for nurses was established, from which, after two years of instruction and experience, many devoted women are sent out to relieve the sick and suffering.

THE ROCHESTER HOMŒOPATHIC HOSPITAL (T22) is located at 233 Monroe Avenue. The Main building which will accommodate fifty patients, and three cottages, are surrounded by beautiful grounds extending to Pearl street where a free Dispensary is open every afternoon for the treatment of the poor.

The private rooms are handsomely fitted up by friends of the Hospital and present all the attractiveness of home comfort.

The three wards for men, women, and children, are light, airy and tastefully furnished, with books, pictures, and toys for the benefit of the little ones.

A training school for nurses is connected with the Hospital.

THE HAHNEMANN HOMŒOPATHIC HOSPITAL, (R30) from which morphine and similar palliatives are excluded, and in which only the strictly Homœopathic remedies are administered, is located on a high and commanding eminence at the corner of Oakland street and Mt. Vernon avenue, overlooking the entire city. It has three acres of ground covered with shade trees, in the center of which is situated the fine residence of the late Judge Selden, which has been transformed into a hospital building. It has accommodations for about forty patients, including four elegantly fitted up private rooms for patients, who are cared for at prices from \$3.50 to \$22.00 per week. Those who are not able to pay receive free treatment.

ST. MARY'S HOSPITAL, (F23) cor. West Avenue and Genesee St. In charge of the Sisters of Charity. It will accommodate about 275 patients; average, about 200. There are seven male and nine female wards; about twenty private rooms. The prices for care in these departments are from \$4 to \$12 per week. The corps of physicians includes Drs. E. M. Moore, W. Rider, J. W. Casey, G. G. Carroll, and others. Patients occupying private rooms can select their own physicians. The operating room is well arranged, and supplied with appliances for first class surgery practice.

THE "HOME FOR THE FRIENDLESS" (U20) is located on East avenue and Alexander st. For the past twenty-five years its object has been to provide a home for aged women. None are admitted under 65 years of age, and some of the inmates are upwards of 90. By paying a sum varying from \$150.00 to 250.00 according to the age of applicant, a home is secured for life, care during sickness, and a decent burial at death. The expenses of maintaining the Home are met by voluntary gifts from the citizens of Rochester.

FREE DISPENSARIES. In 1887 a free dispensary for women and children was opened by the Provident Dispensary Association, in rooms in the city building on Front street, furnished gratuitously by the Common Council. A contribution of \$100.00 is made annually from the city poor fund. A charge of five cents a prescription is made to those who can pay it, and the expenses beyond these receipts are met by voluntary donations. Thirteen female physicians and fifteen other ladies, representing the different churches and religious denominations, constitute the Association. About one thousand patients have been treated since its organization, and the total number of prescriptions is about 20,000.

Free dispensaries are also connected with the hospitals.

HUMANE SOCIETY. Any cases of cruelty to children or animals receive prompt attention, if reported at the office of this society, 62 State street, second floor. Its officer has power to do whatever the circumstances of the case require. Owners of injured animals frequently call on the officer to have them killed, which is done free of charge. A most practical and beneficent work of this Society was

furnishing the free ambulance, which is used by the police department to transport injured persons.

ROCHESTER ORPHAN ASYLUM. Hubbell Park. Conducted by a board of Lady Managers distinguished for beneficence and social position. The asylum cares for orphans and destitute children generally, under twelve years of age, giving them intellectual, moral and industrial training, with the object of finding homes for them, which is usually done. Some are "paid" by the city or county, some by a parent, but many are sustained entirely by the asylum. It is the only institution in the city which receives infants whose mothers are not capable of caring for them. The average number of inmates is about 100. Visitors are admitted at any time without preliminaries.

ST MARY'S (boys) ORPHAN ASYLUM. Cor. West avenue and Genesee street, receives children from two to twelve years old.

ST. PATRICK'S (girls) ORPHAN ASYLUM. No. 62 Frank street, in charge of the Sisters of St. Joseph.

ST. JOSEPH'S ORPHAN ASYLUM, (German) 221 Andrews street.

SISTERS OF MERCY, INDUSTRIAL SCHOOL, 29 South street.

HOME OF INDUSTRY, East Main street near Prince, 48 pupils.

THE WOMAN'S CHRISTIAN ASSOCIATION, is for the object of aiding women in finding employment and keeping good company—especially strangers in the city. A boarding home where they may live at moderate expense has been established at 118 Franklin street, with a branch at 72 Sophia street, which has the employment bureau and restaurant. Miss Fannie Sheldon is the matron.

THE CHURCH HOME, of the Protestant Episcopal church, 239 Mt. Hope avenue, provides a home for its aged and dependent women, and an orphan asylum for its destitute or dependent children.

* **THE INDUSTRIAL SCHOOL,** 133 Exchange street opposite Court. This school aims to gather in destitute children and to care for young children through the day, whose mothers are out at work. The industrial and moral training is in the charge of the society, while the instruction in letters is in charge of the city, and known as "Public School No. 1."

Church Directory.

Name.	Location.	Pastor.	Residence.
BAPTIST.			
First,	N. Fitzhugh cor. Church	J. W. A. Stewart	21 Atkinson
Second,	50-54 North ave	Fred'k L. Anderson	5 Union park
Lake Ave.,	Lake and Jones aves	T. H. Pattison, D.D.	4 Portsm'th Ter
Park Ave.,	Park Ave. cor. Meigs	H. Clay Peepels	42 Harvard
Plymouth Av.	Flint near Plymouth av	J. Bunyan Lemon	296 Reynolds
Bronson Ave.	Bronson av cor Reynolds	J. Ross Lynch	202 Tremont
Alexander St.	Alex'r cor Dake	W. J. Reid	60 N. Alexander
North	Clifford n St. Joseph	Ira S. Kneeland	27 Avenue A
Meigs St.	Meigs and Benton	J. R. Egan	20 Benton
Lyell Ave.,	20 Cameron	J. J. Williams	Trevor Hall
1st German	Andrews n Clinton	Lewis Kaiser	47 Concord av
2d "	Meigs c Pinnacle av	Wm. C. Rabe	6 Pappert park
PRESBYTERIAN.			
First	Plymouth av c Spring	Nelson Milard	41 Harvard
Brick	N Fitzhugh c Allen	Wm. R. Taylor	18 Prince
Third	East av cor Meigs	Geo. Patton	53 Prince
Central	Sophia near Main	Henry H. Stebbins	287 Alexander
St. Peter's	Gilbs cor Grove	Alfred J. Hutton	44 N Goodman
Calvary	So av cor Hamilton pl	Glenrole McQueen	84 Hamilton pl
Westminster	West av nr Jefferson av	C. B. Gardner	8 New York
Memorial	Hudson cor Wilson	Chas. P. Colt	165 Hudson
North,	Fulton av cor Locust	Peter Lindsay	44 Fulton av
Emmanuel	Plym av and Frost av	Jas. S. Root	26 Frost av
Grace	Lyell and Kosuth		
Covenanter	245 Alexander	J. M. McElhinney	20 Tracy pk
United	Allen near Sophia	Jas. P. Sankey	52 N Washington
METHODIST EPISCOPAL.			
First	N Fitzhugh cor Church	I. T. Walker D.D.	11 Arnold park
Asbury	East av cor Anson park	G. Chapman Jones	170 East ave
Frank St	Frank cor Smith	Jas E. Bills D.D.	89 Fulton av
Cornhill	Edinburgh nr Plym av	A. W. Hayes	20 Tremont
Alexander St.	Alexander n Cobb	E. A. Morse,	6 Cobb
North Ave	North av opp Ontario	Geo. Stratton	4 Concord av
Epworth	Clifton cor Epworth	Joseph Dennis	133 Clifton
Hedding	N St Paul cor Scrantom	A. D. Wilbor D.D.	765 N St. Paul
S. R. Memo.	North Goodman c Emma	Arthur O. Sykes	61 Alexander
German	North av opp Kirk	F. W. Dinger	51 Concord av
Zion (col)	Favor nr Spring	Geo. C. Carter	19 Eagle
Free Meth.	N Union cor Richmond pk,	E. A. Taylor	47 Broadway

Name.	Location.	Pastor.	Residence.
CONGREGATIONAL.			
Plymouth	Plym av cor Troup	Myron Adams Jr	49 Oxford
South	Alexander cor Pearl	Geo. E. Soper	99 Pearl
Unitarian	Temple cor Cortland	Wm. C. Gannett	8 East
PROTESTANT EPISCOPAL.			
St. Luke's	S Fitzhugh near Main	Henry Antlice	132 S Fitzhugh
St. Paul's	N St. Paul near Main	Louis C. Washburn	72 N Clinton
Trinity	Jones av cor Frank		
Christ	East av near William	W. D'O. Doty	56 Gibbs
Good Shepherd,	Grape near Jay		
Epiphany	Jeff. av opp Adams	Amos Skeele	181 Jefferson av
St. James	Almira cor Grant park	Jas. H. Dennis	Grant park
St. Andrew's,	Averill av cor Ashland	A. S. Crapsey	18 Ashland
St. John's	Hawthorn St	Arthur Sloan	19 Hawthorn
St. Mark's	Hollister cor Hudson pk	E. P. Hart	90 Plymouth av
Ascension	Augustine St	F. S. Hyde	12 Emerson
CHRISTIAN.			
Disciples of Ch	Howell near Monroe av	Ollver G. Hertzog	238 Monroe av
ROMAN CATHOLIC.			
Cathedral	Platt and Frank Sts	J. P. Kiernad	Frank & Vogt st
St. Mary's	South st near Court	J. P. Stewart	South adj. Ch.
St. Joseph's,	Franklin near Clinton	Jos. Wirth	Franklin "
Sts Peter & Paul's,	Maple & King sts	F. Sinclair	Maple "
Lady of Victory,	Pleasant near St Paul	A. Notebaert	Pleasant "
Im. Concep.	Plymouth av n Glasgow	J. F. O'Hare	Plym av "
St Bridget's	Gorham near Gorham pk	Jas. O'Connor	Gorham st "
St Boniface	Grand near South av	H. Renker,	Grand st "
Holy Family	Jay st	D. Laurenzis	
Holy Redeemer	Hudson cor Clifford	F. Oberholzer	
St Michael's	North Clinton	Fr. Pascalar	N Clinton "
Holy Apostles,	Lyell avenue	T. C. Murphy	Lyell av "
St Francis Xavier,	Bay nr Miller	M. J. Hargather	
Corpus Christi,	East Main near Prince	Jas. Leary,	East Main "
LUTHERAN.			
First, Zion	Grove cor Stillson	Alexander Richter	46 Stillson
Reformation	Grove nr North av	John E. Whitteker,	7 Grove
St John's	St Joseph cor Buchan pk	John Nicum	46 Morris
Concordia (Ger)	Helena cor Putnam	Carl N. Conrad	137 University av
St Matthew's	Morris nr N Clinton	J. Muelhaeuser	33 Morris
Grace Chapel	Bay cor Alexander	T. Steinhauser	
	Sanford cor Caroline	H. C. A. Meyer	34 Caroline

Name	Location.	Pastor.	Residence.
EVANGELICAL.			
Trinity (Ger)	Allen nr Fitzhugh	Emil Henckell	88 Allen
St Paul's (Ger)	N. Fitzhugh	Albert Zeller	256 Troup
Salem (Ger)	Franklin nr N St Paul	Chas. Siebenpfeiffer	10 Cataract
First (Asso)	Hudson nr Vienna	C. F. Schoepflin	171 Hudson
JEWISH.			
Temple	N St Paul nr Andrews	Max Landsberg	420 E Main
Hynagogue	80 Leopold	A. Levinson	66 Nassau
"	168 Chatham	Lazarus Anixter	74 Hanover
REFORMED.			
First (Dutch)	Oregon cor Harrison	P. DeBruyn	49 Concord av
Second	Scio cor Central av	A. Vennema	171 Weld st
Emanuel's (Ger)	106 Hamilton pl	Carl Gundlach	108 Hamilt on pl
Holland	97 Chatham		
UNIVERSALIST.			
First	South Clinton	Asa Saxe	7 Arnold park
Second	70 Spencer	Frank J. Chase	15 Fulton av.

Y. M. C. A.

The Young Men's Christian Association has just erected a large and elegant building at the corner of South St. Paul and Court streets overlooking the Genesee river for some distance. The expense of building and site was about \$150,000. All young men of good moral character are eligible to membership and will be made welcome by the general secretary, Mr. Dean Alvord, whose office is on the second floor, near the entrance. Here all information may be obtained. The association offers many advantages to its members, in the way of Reading Room, Library, Educational classes, socials and entertainments, as well as the Gymnasium, Physical instruction, various kinds of Baths, Bowling Alleys, etc. A "limited ticket" for which the member pays \$2.00 annually entitles him to the former, and a "full ticket" costing \$8.00 annually, gives all the privileges to members. There is also a bureau of employment and a boarding-house directory for the free use of all. It is the aim of the association to be of the best use to all young men. Especially to strangers and visitors in the city. It is recognized as a power for good by the residents of the city.

✧ Libraries. ✧

REYNOLDS PUBLIC LIBRARY—in Reynolds Arcade, is a gift of Mortimer F. Reynolds. Contains 18,000 volumes. Open daily except Sunday, for the free use of all, from 1 to 9 o'clock P. M. About 2,000 people have taken out permits to draw books, and the annual number of loans is about 15,000.

THE CENTRAL LIBRARY of the Public schools, is accessible to the public by a permit from any school commissioner. It is located in the first story of the Free Academy building, and contains about 19,000 volumes, and a great variety of literature.

THE UNIVERSITY LIBRARY, in Sibley Hall is open to the public for consultation from 12:30 to 5 P. M. It contains about 25,000 volumes; additions are being made very rapidly, embracing all the prominent features of modern thought.

THE PUBLIC LAW LIBRARY, owned by the State, is in the second story of the court house. Everyone has free access to its 12,000 volumes, embracing principally, statutes and reports.

MR. D. W. POWERS, in the year 1888, purchased the law library of the late Roscoe Conkling, and placed it at the service of the occupants of the Powers Building, in rooms 437 and 438. The additions to it make a total collection of over 5,000 volumes.

Stamp Agencies

Established by the Post Office Department for supplying Stamps and Postal Cards, at the following Drug Stores:

561 State st.,.....	S. A. Merriam	172 South Avenue,.....	Fred S. Mason
285 Lake Avenue,.....	Craig & Stewart	330 Monroe Avenue,.....	W. T. McBay
243 Lyell Avenue,...	Craig & Vanderbilt	Culver Park,.....	Dake Brothers
216 Brown st.,.....	Peter G. Siener	482 East Main st.,.....	W. W. Steele
254 West Avenue,...	R. J. Strassenburgh	1 Central Park,.....	E. W. Fellman
180 Jefferson Ave.,	C. B. Braman & Co	312 North Avenue,.....	Jos. M. Schmitt
388 Plymouth Ave.,...	W. H. Jesserer	199 Hudson st.,.....	Jno Esterheld
468 North Clinton,.....	C. W. Lerch		

Rochester Post Office.

General delivery, open from 7:30 a. m. to 8:00 p. m.

" " Sunday " 12:00 " 1:00 "

Stamp window, " 7:30 " 7:00 "

Registry and Money Order, 9:00 " 6:00 "

MAILS CLOSE:

For New York City, Boston and Albany, direct—7:20 p. m.

EAST, by Direct Road, (New York, New England States, Foreign and Eastern Canada,) 6:05, 9:00, 10:45 a. m., 4:45, 10:45 p. m.

" " Auburn road, (way mails) 7:15 a. m., 3:00, 10:45 p. m.

WEST, by Buffalo, (all western and southern states west of Georgia,) 7:15 a. m., 5:50, 9:05 p. m.

" " Niagara Falls, (and Canada west,) 9:30 a. m., 4:15, 9:05 p. m.

Rome, Watertown & Ogdensburg, east, 8:00 a. m., 6:20 p. m.

West, 9:00, a. m., 7:20, 9:05 p. m.

SOUTH, by Nor. Central, (Phila., Washington, Carolinas, Florida, &c.,) 6:05, 9:00 a. m., 5:50, 7:20, 10:45 p. m.

" " Erie Railway, 9:00 a. m., 4:15, 5:50 p. m.

" " Dansville Branch, 9:00 a. m., 3:45, 9:05 p. m.

" " B. N. Y. & P. road, 6:45 a. m. B. R. & P. road, 6:45 a. m.

CITY DELIVERY SYSTEM.

In the central part, at 7:30, 9:30, 12:00, 2:00 and 4:30 o'clock.

In the intermediate districts, at 7:30, 11:45 and 2:00 o'clock.

In the outer districts, at 7:30 and 11:45 o'clock.

Mails are collected at boxes on all these trips. There is also an extended collection late in the afternoon, a special business collection at 4:30 p. m., and at 6:30 p. m. all boxes within $1\frac{1}{4}$ miles of the center. Sunday collection at 3:00 p. m.—radius, $1\frac{1}{2}$ miles from the center.

SPECIAL IMMEDIATE DELIVERY.

By affixing a ten-cent delivery-stamp to a pre-paid letter or parcel, it will be delivered immediately from any city post office or within one mile of any other post office in the United States, to which it is addressed, by a special messenger.

"I THINK I'D LIKE \$5,000.00 WHEN I'M SIXTY."

THE gentleman who made the above remark secured a \$5,000 endowment policy in the **State Mutual Life Assurance Company**, of Worcester, Mass. By the terms of the policy that amount was payable to him at "sixty," or to his family in case of his death before reaching that age.

HE DID NOT HAVE TO DIE TO WIN "

On the second day of May, 1887, it was my pleasure to hand to him the Company's check for \$5,068.65. He had previously received \$1,103.-42 in **cash dividends**; the result being over 117 per cent. of his payments to the Company, besides \$5 000 life insurance for the whole term of the policy.

Many persons now "sixty" would like \$5,000; but they neglected to insure, and failed to secure the amount in any other way; hence they must

CONTINUE TO WANT IT

Thousands of men now insurable will need \$5,000 when they become "sixty"—and their families will sorely need it should they die before attaining that age. Both these objects can be secured by the payment of a small sum each year to the **State Mutual**—which, on the part of many, implies only the practice of

A LITTLE WHOLESOME SELF-DENIAL

which would prolong their lives and increase their happiness and usefulness. Thus they will receive double value for their prudent outlay:—First, in the satisfaction of protecting their loved ones, and second, in their own increased comfort in old age. A smaller sum would help many families over many hard places, and a still larger sum would be proportionately better.

HOW MUCH WOULD YOU LIKE ?

Failure to pay a Premium when due, does not forfeit your policy; under the Massachusetts Insurance Act of 1887, the company must pay the insured the **Cash Value** given below, (age 35) at any time after the second year:

2 years, - - \$ 190.30	10 years, - - \$1348.35	18 years, " - \$ 2962.90
3 " - - - 314.85	11 " - - - 1521.90	19 " - - - 3208.65
4 " - - - 444.60	12 " - - - 1702.50	20 " - - - 3467.05
5 " - - - 579.85	13 " - - - 1890.6	21 " - - - 3739.30
6 " - - - 720.95	14 " - - - 2086.70	22 " - - - 4026.90
7 " - - - 868.10	15 " - - - 2291.35	23 " - - - 4331.45
8 " - - - 1021.65	16 " - - - 2505.10	24 " - - - 4655.10
9 " - - - 1181.65	17 " - - - 2728.70	25 " - - - 5000.00

Our policy, like a bank draft, is a simple promise to pay, and after two years is **Absolutely Incontestable** **Annual Cash Dividends**. Good agents wanted.

MATT FOSTER, Gen'l Agent, 201-202 Ellwanger & Barry Bld'g.

Fisk

MERCHANT TAILOR,

138 EAST MAIN STREET,

OVER SIBLEY, LINDSAY & CURR.

Nos. 4 and 5 Marble Block,

Rochester, N. Y.

A. W. MUDGE,

Telephone, 236-A
Residence, 236-D

UNDERTAKER,

Open all Night.

31 N. FITZHUGH.

DO YOU KNOW ?

You can save 50 per cent. in the cost of your Life Insurance

By Insuring in the

IMPERIAL LIFE INSURANCE COMPANY,

\$1,000 costs

IN THE

IMPERIAL:

OF DETROIT,

ONE OF THE STRONGEST

OF THE OLD LINE

COMPANIES.

\$1,000 costs

IN

Other Companies:

Age 25, \$14.00

" 30, 15.00

" 35, 16.00

" 40, 17.25

" 45, 19.00

" 50, 22.50

" 55, 29.00

" 60, 40.00

If : You : Want : Insurance

.....
or if you want
to represent a Company that is
EASY TO WORK,
call on or address

Age 25, \$10.80

" 30, 22.50

" 35, 26.00

" 40, 31.30

" 45, 37.90

" 50, 47.00

" 55, 59.90

" 60, 77.00

STONEBURN & YENDES, Managers, 16 State St. Rochester, N.Y.