

GORDON & KAELBER  
ARCHITECTS

ROCHESTER, NEW YORK

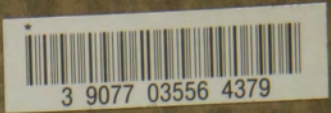
ARCHITECTURAL CATALOG

SEPTEMBER, 1923









A MONOGRAPH OF  
THE WORK OF  
GORDON & KAELEBER  
ARCHITECTS



*Gordon & Kaelber, Rochester, N. Y.*

ROCHESTER NEW YORK  
MCMXXIII

21-10-55-L me

R  
for 720  
H665ms

1-1



EASTMAN THEATRE AND EASTMAN SCHOOL OF MUSIC, UNIVERSITY OF ROCHESTER

A. W. Hopenman & Sons Co., Builders

Gordon & Kaelber, Architects  
McKim, Mead & White, Associate Architects





INTERIOR EASTMAN THEATRE, UNIVERSITY OF ROCHESTER

Gordon & Kaelber, *Architects*  
McKim, Mead & White, *Associate Architects*



KILBOURN HALL, EASTMAN SCHOOL OF MUSIC, UNIVERSITY OF ROCHESTER

Gordon & Kaelber, *Architects*  
McKim, Mead & White, *Associate Architects*



MAIN CORRIDOR, FIRST FLOOR, EASTMAN SCHOOL OF MUSIC, UNIVERSITY OF ROCHESTER

Gordon & Kaelber, *Architects*  
McKim, Mead & White, *Associate Architects*





VIEW FROM EAST AVENUE, EASTMAN SCHOOL OF MUSIC AND EASTMAN THEATRE, UNIVERSITY OF ROCHESTER

*A. W. Hopeman & Sons Co., Builders*

*Gordon & Kaelber, Architects*  
*McKim, Mead & White, Associate Architects*



DEMOCRAT AND CHRONICLE BUILDING, ROCHESTER, N. Y.

A. W. Hopeman & Sons Co., Builders

Gordon & Kaelber, Architects





MADISON JUNIOR HIGH SCHOOL, ROCHESTER, N. Y.

A. Friederichs & Sons Co., Builders



MONROE JUNIOR HIGH SCHOOL, ROCHESTER, N. Y.

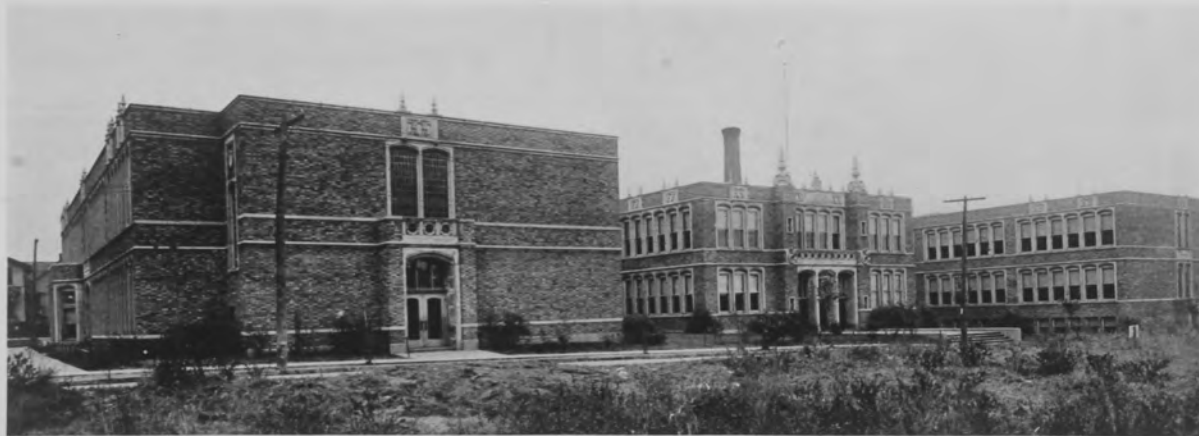
A. Friederichs & Sons Co., *Builders*





JEFFERSON JUNIOR HIGH SCHOOL, ROCHESTER, N. Y.

Gorsline-Swan Const. Co., *Builders*



No. 22 SCHOOL, ROCHESTER, N. Y.



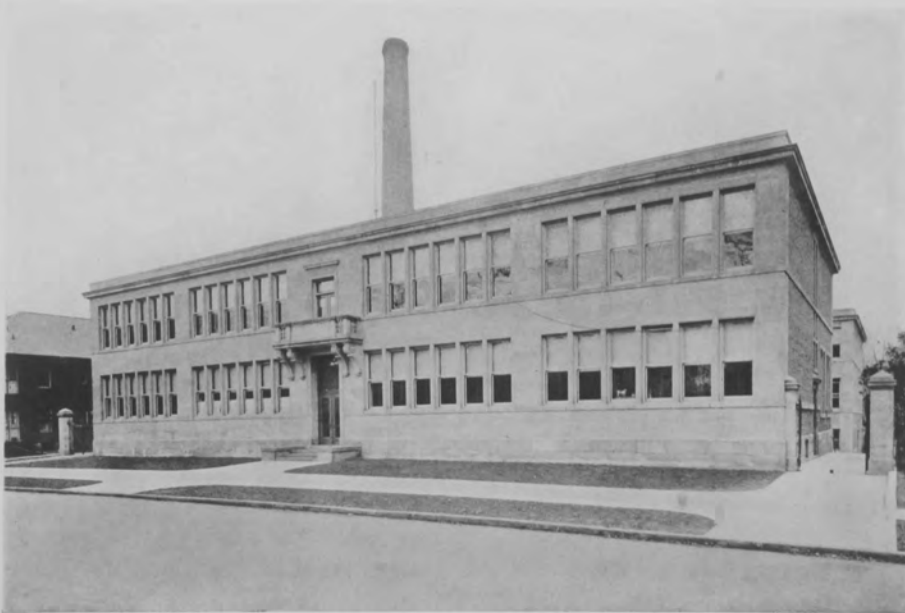
NATHANIEL HAWTHORNE SCHOOL (No. 25), ROCHESTER, N. Y.





MARTIN B. ANDERSON (No. 1) SCHOOL, ROCHESTER, N. Y.

*Gorsline-Swan Const. Co., Builders*



ALEXANDER HAMILTON (No. 31) SCHOOL, ROCHESTER, N. Y.



ROCHESTER DENTAL DISPENSARY, ROCHESTER, N. Y.

A. W. Hopeman & Sons Co., Builders



CHILDRENS' WAITING ROOM, ROCHESTER DENTAL DISPENSARY, ROCHESTER, N. Y.





ADDITIONS AND ALTERATIONS TO ROCHESTER GENERAL HOSPITAL, ROCHESTER, N. Y.



NURSES' HOME, ST. MARY'S HOSPITAL, ROCHESTER, N. Y.

Gordon & Kaelber, *Architects*  
C. W. Eldridge, *Associate*



OFFICE BUILDING FOR THE GLEASON WORKS, ROCHESTER, N. Y.





PERISTYLE AT EDGERTON PARK, ROCHESTER, N. Y.



BAND STAND AT EDGERTON PARK, ROCHESTER, N. Y.



SOUTHEAST BRANCH Y. M. C. A., ROCHESTER, N. Y.

Gordon & Kaelber, Architects





FIRST CHURCH OF CHRIST SCIENTIST, ROCHESTER, N. Y.

Henry Lampert, *Builder*



BRIGHTON PRESBYTERIAN CHURCH, ROCHESTER, N. Y.



CHURCH OF THE BLESSED SACRAMENT, ROCHESTER, N. Y.





REREDOS AND MAIN ALTAR, CHURCH OF THE BLESSED SACRAMENT, ROCHESTER, N. Y.



SPENCER RIPLEY M. E. CHURCH, ROCHESTER, N. Y.

*Gordon & Kaelber, Architects*



BIBLE SCHOOL FOR SALEM EVANGELICAL CHURCH, ROCHESTER, N. Y.

*Gordon & Kaelber, Architects*



ST. STEPHENS R. C. CHURCH, GENEVA, N. Y.





INTERIOR OF ST. STEPHENS R. C. CHURCH, GENEVA, N. Y.



SS. PETER AND PAUL'S CHURCH, ROCHESTER, N. Y.

Henry Lampert, *Builder*



BAPTIST TEMPLE, ROCHESTER, N. Y.

Gordon & Kaelber, } Architects  
Carl R. Traver,





HOUSE FOR MR. SYLVANUS F. JENKINS, ROCHESTER, N. Y.

Gordon & Kaelber, *Architects*



HOUSE FOR MR. GEORGE D. B. BONBRIGHT, ROCHESTER, N. Y.



HOUSE REMODELED FOR MR. GEORGE W. TODD, ROCHESTER, N. Y.

*Gordon & Kaelber, Architects*





HOUSE REMODELED FOR MRS. ANAH B. YATES, ROCHESTER, N. Y.



HOUSE REMODELED FOR MR. EDMUND LYON, ROCHESTER, N. Y.



HOUSE FOR DR. EDWIN S. INGERSOLL, BRIGHTON, N. Y.

*Gordon & Kaelber, Architects*



HOUSE FOR MR. HAROLD M. JENKINS, ROCHESTER, N. Y.

*Gordon & Kaelber, Architects*



HOUSE FOR MR. JOHN C. WOODBURY, ROCHESTER, N. Y.

Henry Lampert, *Builder*

Gordon & Kaelber, *Architects*



HOUSE FOR MR. GEORGE N. LENCI, ROCHESTER, N. Y.

Gordon & Kaelber, *Architects*





HOUSE FOR DR. CHARLES R. BARBER, ROCHESTER, N. Y.

*Gordon & Kaelber, Architects*



HOUSE FOR MRS. JAMES McAULIFF, ROCHESTER, N. Y.

*Gordon & Kaelber, Architects*



HOUSE FOR MR. FRANCIS B. MITCHELL, PITTSFORD, N. Y.

*Gordon & Kaelber, Architects*



HOUSE FOR MR. L. M. TODD, ROCK BEACH, N. Y.

*Gordon & Kaelber, Architects*



HOUSE FOR MRS. SATTERLEE, PITTSFORD, N. Y.



HOUSE FOR MR. JAMES P. GORDON, ROCHESTER, N. Y.



HOUSE AT BROWNCROFT, CHRISTMAS, 1922





THREE HOUSES ON CLOVER STREET, BRIGHTON, N. Y.



GARAGE FOR MRS. IDA M. ANGLE, ROCHESTER, N. Y.



HOUSE FOR MR. WILLIAM G. KAELEBER, ROCHESTER, N. Y.



HOUSES IN BROWNCROFT

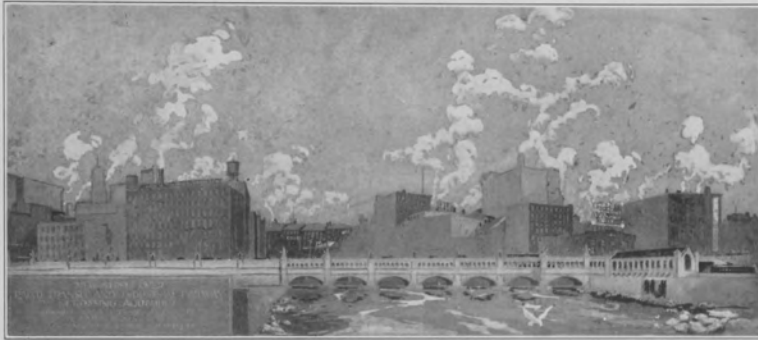
Gordon & Kachery Architects



HOUSES IN BROWNCROFT

Gordon & Kaelber, Architects





NEW SUPERSTRUCTURE FOR R. R. SUBWAY OVER ERIE CANAL AQUEDUCT,  
ROCHESTER, N. Y.

---

Some of the work herein shown was done by the firm of GORDON & MADDEN, WM. G. KAELEBER, Architects, predecessors of the present firm, although practically all of the work illustrated was designed and executed by the members of the present firm of GORDON & KAELEBER.

---



*Library of S. F. Jenkins, Rochester, N. Y.*

*Gordon & Kaelber, Architects*

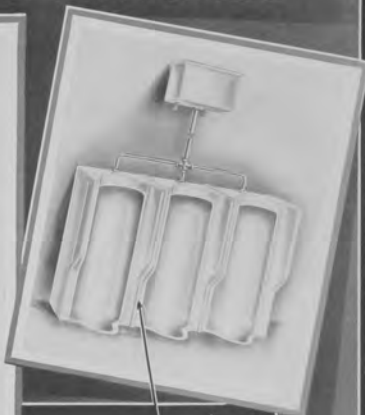
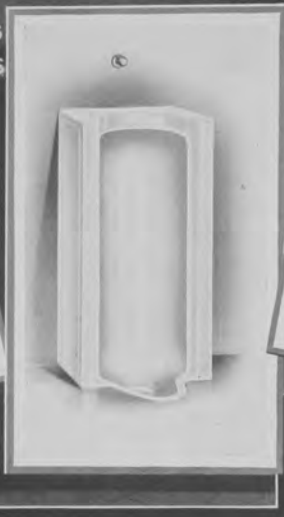
FOR fifty years we have kept the spirit and letter  
of every contract, met the specifications of  
architects and satisfied the ideals of builders.

C. H. RUGG COMPANY  
*Woodwork of Quality*  
ROCHESTER, NEW YORK

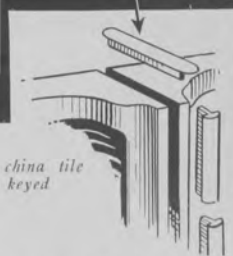
Another Douglas

# ACHIEVEMENT IN PLUMBING FIXTURES

The wish of Architects  
and Sanitary Engineers  
realized



*The China Cover on outlet gives  
an entire white appearance  
on the inside of Urinal*



*Illustration shows the china tile  
seam cover which is keyed  
in cement*

## Genuine Vitreous China Urinals

For a great many years there has been a demand among the Architects and Sanitary Engineers for a material that is absolutely impervious for the manufacture of Stall Urinals. Many materials have been tried and found unsatisfactory for various reasons.

It has always been conceded by authorities that the most desirable material possible for this purpose would be "VITREOUS CHINA" (which is the same material that is used in the manufacture of Water Closet Bowls), but until recently no manufacturer has been able to successfully produce an article as large as a Stall Urinal in "Vitreous China."

THE JOHN DOUGLAS COMPANY has perfected a process to manufacture an 18-inch Vitreous China Stall Urinal, and is now in position to furnish them on specifications.

Points of advantage are: Absolute Imperviousness, Light Weight (about 150 lbs.), Absence of Crazeing, Discoloring, etc.

*Write for descriptive circular*

Manufactured by

**THE JOHN DOUGLAS COMPANY**

Factories, CINCINNATI, O., and TRENTON, N. J.

General Offices  
CINCINNATI, O.





Res. of Homer G. Whitmore  
Rochester, N. Y.



Sagamore Hotel  
Rochester, N. Y.



Madison Jr. High School  
Rochester, N. Y.

THE above group of buildings represent various types of plumbing and heating installations furnished and installed by this Organization.

We are at your service for your next job regardless of its size.

For up-to-date plumbing and heating consult us.

# BARR & CREELMAN CO.

74 EXCHANGE STREET  
ROCHESTER, N. Y.



*Illustration  
shows our work in  
Eastman Theatre  
and School of Music,  
Rochester, N. Y.*

DIGNITY AND DURABILITY ARE PERMANENTLY  
ESTABLISHED BY CAREFULLY EXECUTED  
MARBLE AND TILE WORK

JAS. C. BARRY COMPANY  
Marble and Tile  
Rochester, N. Y.

ESTABLISHED 1887

## Hardware— the finishing touch

## RUSSWIN

In the finishing of a house, hardware plays an important part. The right hardware in the right place adds greatly to the beauty of any home.

The Finishing Hardware in the majority of the beautiful homes illustrated in this booklet, and many other houses and buildings, has been furnished by us, to the entire satisfaction of both Architect and Owner.

HENRY LESTER HARDWARE CO., Inc.

GROVER A. CLICQUENNOI, Mgr.

ROCHESTER, N. Y.



EASTMAN SCHOOL OF MUSIC & THEATRE

**A. W. HOPEMAN & SONS CO.**

Building Contractors

ROCHESTER, N. Y.

PHILADELPHIA, PA.



STAIRHALL, S.S. H. F. ALEXANDER

**HOPEMAN BROS. LUMBER & M'FG CO.**

Architectural Woodwork of Distinction :: Ship Joiners

Rochester, N. Y.

Chester, Pa.





EASTMAN SCHOOL OF MUSIC  
University of Rochester, Rochester, N. Y. GORDON & KAELEBER, Architects

## Spencer Central Cleaning Systems

are installed in many of the finest buildings of all types throughout the United States and Canada.

Among the buildings designed by Messrs. Gordon & Kaelber, Architects, and equipped with Spencer apparatus, are the following:

Eastman School of Music, Rochester, N. Y.  
Madison Junior High School, Rochester, N. Y.  
Monroe Junior High School, Rochester, N. Y.  
Jefferson Junior High School, Rochester, N. Y.

School No. 22, Rochester, N. Y.  
Martin B. Anderson School, Rochester, N. Y.  
Alexander Hamilton School, Rochester, N. Y.  
St. Mary's Hospital, Nurses' Home, Rochester, N. Y.

---

*Repeat Orders Testify to Satisfactory Service*

---

THE SPENCER TURBINE COMPANY, Hartford, Conn.

ORNAMENTAL BRASS,  
BRONZE, IRON  
AND  
WIRE WORK

*for*

THEATERS, CHURCHES AND  
PUBLIC BUILDINGS



Rochester Brass & Wire  
Works Co.

76-78 EXCHANGE ST.,  
ROCHESTER, N. Y.

## WM. B. MORSE LUMBER CO.

DEALERS IN

### Forest Products

ROCHESTER, N. Y.

---

BRANCHES

WM. B. MORSE & SONS  
340 Main Street West.

OTIS LUMBER CO.  
936 Main Street East

MORSE SASH AND DOOR CO.  
101 Ford Street.



When you specify Crane equipment for a fine home, you have the comfortable assurance that the smallest faucet, valve or hidden fitting in the water, heating, sanitation or vacuum cleaning system matches in quality

and efficiency the visible units whose beauty and convenience make such striking appeal to your client's taste. A lifetime of satisfying service is not too much to expect from Crane balanced installations.

# CRANE

GENERAL OFFICES: CRANE BUILDING, 836 S. MICHIGAN AVE., CHICAGO

*Branches and Sales Offices in One Hundred and Thirty-five Cities*

*Rochester, N. Y., Branch: 200 South Ave.*

*National Exhibit Rooms: Chicago, New York, Atlantic City*

*Works: Chicago and Bridgeport*



## 40 YEARS THE STANDARD

The Synthetic Marble, Silverdale and  
Limestone throughout the Eastman  
School of Music, Kilburn Hall  
and Theatre buildings  
was furnished and  
installed by

**H. A. COUSINS, Inc.**

516-524 West 25th Street  
New York City



Phone Madison Square 8170

**DECORATIVE PLANT CO., Inc.**

*D. A. LAUFERTY, Pres.*

**Artificial Florists**

228 to 232 Fifth Avenue  
New York



**ARNOLD & NORTH, Inc.**  
124 EAST 41st STREET, NEW YORK

**MANTELPIECES**





First Church of Christ Scientist, Rochester, N.Y.

Gordon & Kaelber, Architects

JOSEPH F. DUJAT, Pres.

## ARCHITECTURAL PLASTERING CO.

624-626 FIRST AVENUE

NEW YORK

TELEPHONE, MURRAY HILL. 6463

EXPERTS IN THE USE OF  
PLASTIC MATERIALS AS A MEDIUM OF ARCHITECTURAL  
AND DECORATIVE EXPRESSION IN THE SIMPLEST  
OR MOST INTRICATE FORM



## TROTTER REFRIGERATORS

Special designs submitted for residences, hotels, restaurants, public institutions, clubs, etc.

*For Ice or Mechanical Cooling*

**Trotter Refrigerator Co.**

55 ELM STREET,

ROCHESTER, N. Y.

**Warder, Clark & Chaplin  
Electric Co., Inc.**

ROCHESTER, N. Y.

---

362 EAST MAIN STREET  
TELEPHONE MAIN 1283

---

**ELECTRICAL  
ENGINEERS**

**Everything Electrical**

ESTABLISHED 1906

**Allen Decorating Co.**

---

**INTERIOR  
DECORATING**

---

Fine Residential Work

*Decorative Schemes and Estimates Furnished  
for Churches, Banks, Theaters and Hotels.*

*Manufacturers of Architectural Woodwork.  
Wood Working Factory in New York City.*

213 Cutler Building Rochester, N. Y.

*"Experts in Office Equipment"*

**Zimmerli  
Business Furniture Corporation**



*General Contractors for*

**BANK, OFFICE,  
LIBRARY AND  
FACTORY EQUIPMENT  
IN  
BRONZE, STEEL  
AND WOOD**

128-130-132 SOUTH AVENUE  
ROCHESTER, N. Y.  
PHONE STONE 5510

## BUILD OF STEEL—A GREATER ROCHESTER

---



MADISON JUNIOR HIGH SCHOOL

GORDON & KAELEBER, ARCH'S

## GENESEE BRIDGE COMPANY

### STRUCTURAL STEEL

BEAMS, CHANNELS, ANGLES, PLATES, BARS, SHEETS, RIVETS,  
BOLTS, ETC., CARRIED IN STOCK

#### SOME OF OUR CONTRACTS:

##### FACTORY BUILDINGS

EASTMAN KODAK COMPANY  
T. H. SYMINGTON COMPANY  
HICKEY-FREEMAN COMPANY  
MORSE CHAIN CO., ITHACA, N. Y.  
MILLER CORSET CO., CANANDAIGUA, N. Y.

##### SCHOOLS

No. 1 SCHOOL—HILLSIDE AVE.  
No. 16 SCHOOL—POST AVE.  
No. 17 SCHOOL—CAMPBELL ST.  
No. 33 SCHOOL—GRAND AVE.

##### CHURCHES

SALEM BIBLE SCHOOL  
ST. PETER & PAUL'S  
SPENCER-RIPLEY  
WESTMINSTER

##### MISCELLANEOUS

EXPOSITION BLDG. No. 4  
EAST AVE. BLDG.  
SENECA HOTEL ANNEX  
ST. MARY'S NURSES' HOME  
BLANCHARD STORAGE

---

It is our desire to give prompt deliveries and to further that end we have purchased a larger site at 382 West Ave., and will occupy it as soon as convenient.

---

### GENESEE BRIDGE COMPANY

666 PLYMOUTH AVENUE  
ROCHESTER, N. Y.





## New Tape Hook Makes Pullman Sash Balance

The 100% Window Device  
With No Increase in Price

The new Tape Hook makes it possible to fasten or unfasten the tape from the sash while sash is in place. No fussing with the stop; no mars or scratches; no refinishing; no lost time.

Pullman Sash Balances are easy to install and cost less than cords and weights. They are cheaper, not alone in first cost, but also because any carpenter can fit 2 to 4 windows with Pullmans while he would ordinarily fit one with cords and weights.

Pullmans eliminate box frames too. That alone saves you real money and makes a tighter, better construction.

Pullmans are made of pressed steel, are entirely incased and constructed in 3 UNITS, K, L and M, adaptable to any kind of sash. Operate easily and quietly; last indefinitely, in fact are guaranteed for 10 years.

Free illustrated catalog, full of Modern Window Operating Information, sent on request.

**Pullman Mfg. Co.**  
236 South Avenue  
Rochester, N. Y.

"PULLMANIZE YOUR WINDOWS"



## Awnings of Character

SABEY AWNINGS are designed to harmonize perfectly with the architectural style of good houses. In design, fit and colorings they are objects of beauty.

They add a final touch of distinction to buildings which stand as monuments to the master work of Gordon and Kaelber.

The FRED F. SABEY CO., Inc.  
ROCHESTER, NEW YORK

# Sabey Awnings

## Forty years' experience—

Equipping buildings and the residence with plain and ornate stairs, fire escapes and railing work.

If it is to be fabricated from rolled steel we can do it and to the satisfaction of your architect.

**Young's  
Wrought Iron Works**

Rochester, N. Y.

## ADAMS FLOORS

Recognized as the standard hardwood floors for residences, clubs, offices and stores.

Selected material seasoned two full years by special processes so it will not shrink, warp or curl at edges.

Laid according to the methods we have perfected during three decades of flooring experience.

*Oak and Imported Woods  
in various thicknesses*

Get estimates on genuine  
Adams Floors from

**Abner Adams Company**

47 EAST AVENUE  
ROCHESTER

# Francis Metal Door and Window Corp.

46 AND 48 CORTLAND STREET

ROCHESTER, N. Y.

— *Manufacturers Representatives for* —

## Dahlstrom Metallic Door Co.

Fire Proof Doors and Windows in Bronze and Steel

Bronze Bank Screens

Drawn and Stamped Metal Specialties

## David Lupton's Sons Co.

Lupton Steel Sash

Lupton Steel Doors

Lupton Steel Partitions

Pond Continuous Sash

Pond Operating Device

## Kinnear Manufacturing Co.

Rolling Doors and Bi-Fold Doors in Wood and Steel

Rolling Partitions

## International Casement Co.

Steel Casement Sash and Frames for Banks, Public Bldgs. and Residences

## Thorp Fire-Proof Door Co.

High Grade Metal Covered Wood Doors and Partitions

## Voightman & Co.

Underwriters Labeled Hollow-metal Windows in all types

*Manufacturers of*

## Landon Type Puttyless Skylight

— — — — —

NOTE: All of above material has been used by Gordon and Kaelber in different buildings shown in this portfolio.

## THE AMERICAN LAUNDRY MACHINERY CO.

Complete Laundry Plants for Hotels,  
Hospitals, Colleges and Institutions.

EASTERN SALES DIVISION  
134 WEST 37th STREET  
NEW YORK, N. Y.

Officers of  
Gorsline & Swan  
Construction Co.:

*President,*  
GEO. L. SWAN.

*Vice-President  
and Treasurer,*  
RICHARD GORSLINE.



General  
Contractors  
for the  
New York  
Central R. R.  
Rochester  
Passenger  
Station

*A partial list of buildings we have erected from plans from the office of Gordon & Kaelber*

JEFFERSON JR. HIGH SCHOOL  
PUBLIC SCHOOL No. 1  
PUBLIC SCHOOL No. 8  
PUBLIC SCHOOL No. 16  
PUBLIC SCHOOL No. 37  
RESEARCH LABORATORY FOR UNIVERSITY OF ROCHESTER  
BLESSED SACRAMENT CHURCH  
CATHEDRAL HALL  
SANTA LUCIA CHURCH  
IMMACULATE CONCEPTION CONVENT  
HOLY SEPULCHRE CEMETERY OFFICE  
HICKEY-FREEMAN CO.  
STROMBERG-CARLSON CO.  
WILMONT CASTLE CO.

JOHN KELLY SHOE CO.  
ROCHESTER STAMPING CO.  
ROCHESTER TRUST & SAFE DEPOSIT CO.,  
Additional story  
GEORGE J. KEYES' RESIDENCE  
MISS McALPINE RESIDENCE  
GENESEE VALLEY CLUB  
ROCHESTER COUNTRY CLUB  
ST. MARY'S BOYS' ASYLUM  
ST. MARY'S GIRLS' ASYLUM  
ST. MARY'S HOSPITAL POWER HOUSE  
ST. MARY'S HOSPITAL NURSES' HOME  
ST. ELIZABETH GUILD  
ST. ANN'S HOME OF AGED

### GORSLINE & SWAN CONSTRUCTION CO.

OFFICE: 243 Powers Block

GENERAL CONTRACTORS  
ROCHESTER, N. Y.

TELEPHONE: Main 646



# A. Friederich & Sons Company

ESTABLISHED 1870

GENERAL BUILDING CONSTRUCTION  
REINFORCED CONCRETE CONSTRUCTION

Builders of many  
structures under the  
supervision of Messrs.  
Gordon & Kaelber illus-  
trated herein and other  
of Rochester's most  
prominent Buildings.



710-12 LAKE AVENUE, ROCHESTER, N. Y.

# OTIS

For more than a half century  
THE WORLD'S WORD  
FOR ELEVATOR SAFETY

OTIS ELEVATOR COMPANY

*Offices in all principal cities of the world*

#### REFERENCES

APOLLO THEATRE, NEW YORK  
CAPITOL THEATRE, NEW YORK  
KEITH'S FORDHAM, NEW YORK  
KEITH'S PALACE, NEW YORK  
LIBERTY THEATRE, NEW YORK  
METROPOLITAN OPERA HOUSE, NEW YORK  
HENRY MILLER THEATRE, NEW YORK  
MUSIC BOX THEATRE, NEW YORK  
NEW AMSTERDAM THEATRE, NEW YORK  
NEW YORK HIPPODROME, NEW YORK  
SELWYN THEATRE, NEW YORK  
TIMES SQUARE THEATRE, NEW YORK  
WINTER GARDEN, NEW YORK  
KEITH'S PROSPECT THEATRE, BROOKLYN  
LOEW'S PALACE THEATRE, BROOKLYN  
PROCTOR'S NEWARK THEATRE, N. J.  
NATIONAL OPERA HOUSE, CUBA  
ALBISO THEATRE, HAVANA

Counterweight system  
and stage equipment of  
EASTMAN THEATRE  
installed by

**PETER CLARK**  
INC.

534-536-538 WEST 30th STREET  
NEW YORK CITY

#### REFERENCES

KEITH'S SYRACUSE THEATRE, N. Y.  
KEITH'S CLEVELAND THEATRE, OHIO  
KEITH'S DAYTON THEATRE, OHIO  
KEITH'S PROVIDENCE THEATRE, R. I.  
APOLLO THEATRE, CHICAGO, ILLS.  
CHICAGO THEATRE, CHICAGO, ILLS.  
HARRIS THEATRE, CHICAGO, ILLS.  
MEVICKERS THEATRE, CHICAGO, ILLS.  
SELWYN THEATRE, CHICAGO, ILLS.  
STATE THEATRE, CHICAGO, ILLS.  
TIVOLI THEATRE, CHICAGO, ILLS.  
ORPHEUM THEATRE, KANSAS CITY, MO.  
ORPHEUM THEATRE, MINNEAPOLIS, MINN.  
ORPHEUM THEATRE, SOUTH BEND, IND.  
ORPHEUM THEATRE, LOS ANGELES, CAL.  
ORPHEUM THEATRE, SAN FRANCISCO  
GRAUMANN'S THEATRE, LOS ANGELES  
GRAUMANN'S THEATRE, HOLLYWOOD

WE HAVE FURNISHED THE HARDWARE FOR MANY OF THE  
FINE HOMES OF ROCHESTER AS WELL AS A MAJORITY OF ITS  
PUBLIC BUILDINGS, TO THE SATISFACTION WE THINK OF  
OWNERS AND ARCHITECTS. WE HOPE IN THE FUTURE TO RE-  
TAIN THE APPROVAL OF THE BUILDING PUBLIC.

**MATHEWS & BOUCHER**

26 EXCHANGE ST.

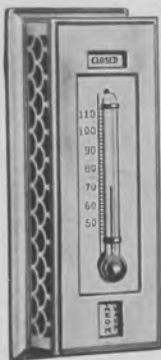
ROCHESTER, N. Y.

# Inter-State Cut Stone Co.



BEDFORD, INDIANA





## THE JOHNSON SYSTEM of TEMPERATURE REGULATION

IS AN INDISPENSABLE FEATURE IN MANY  
OF THE HIGH CLASS BUILDINGS DESIGNED  
BY GORDON & KAELEBER, WHICH ARE  
ILLUSTRATED IN THIS PUBLICATION

THE INCONSPICUOUS,  
ARTISTIC THERMOSTATS.  
NO RUBBER DIAPHRAGM IN  
EITHER THERMOSTATS OR  
VALVES.

AUTOMATIC REGULATION  
OF TEMPERATURE AND  
HUMIDITY IN OFFICE  
AND PUBLIC BUILDINGS,  
RESIDENCES, HOSPITALS,  
SCHOOLS AND HOTELS.



JOHNSON SERVICE COMPANY  
MILWAUKEE, WIS.

*Branches in All Principal Cities*



## Royal Flush Valves

are recognized by a great majority of prominent  
Architects as the most durable, serviceable and  
convenient flushing equipment for any standard  
type of water closet, urinal or slop sink.

Manufactured by  
**SLOAN VALVE COMPANY**  
CHICAGO

W. C. McQUEENY, Representative  
71 VICTORIA AVE. BUFFALO, N. Y.

Samuel Sloan & Co.

Plumbing and Heating  
Fixtures



SHOW ROOMS  
67-71 EXCHANGE ST.  
ROCHESTER, N. Y.

## SUPERIOR SEATING CO.

School Desks  
Theatre Chairs  
Church Furniture

SALES OFFICE AND SHOWROOMS

105 WEST 40th STREET  
NEW YORK



CHURCH OF THE BLESSED SACRAMENT  
ROCHESTER, N. Y.

ARCHITECTS

GORDON & KAELEBER

ROCHESTER, N. Y.

CUT STONE CONTRACTOR

THE OHIO CUT STONE CO.

CLEVELAND, OHIO

### **"Buckeye Gray" Sandstone**

FURNISHED BY

## **THE OHIO QUARRIES COMPANY**

CITIZENS BUILDING

CLEVELAND, OHIO



One of two revolving doors in the new Eastman School of Music, Rochester, N. Y.

REVOLVING DOORS, INC.

556 WEST 27th STREET  
NEW YORK CITY



Discerning architects invariably specify PEELLE when Freight Elevator Doors are required.

**PEELLE**

TRUCKABLE  
FREIGHT  
ELEVATOR

**DOORS**

**THE PEELLE COMPANY**

BROOKLYN

NEW YORK

ESTABLISHED 1849

**Snead & Company**

Specialists in  
**Metal Library Shelving**

Makers of the  
**Snead Standard Stack**

*We offer, without obligation:*

1. A free copy of our 271 illustrated page catalogue to Architects and Librarians interested in library planning.
2. The services of a trained organization familiar with book-stack problems.

Office and Works: Jersey City, N. J.

Build your Home in

**Browncroft**

ROCHESTER'S FINEST  
RESIDENTIAL SECTION



## In the Eastman Theatre and School of Music



A portion of the Music Library of the Eastman Theatre and School of Music.

This Library contains 70 No. 5836 "Y and E" Fire-Wall Steel Filing Cabinets and 11 Special two-drawer No. 5836 Sections. The above files contain more than 10,000 sets of YawmanotE File Pockets and approximately 4000 "Y and E" Metal Label Holder Guides.

### Fire-Wall Steel Filing Cabinets

are used in the Music Library for filing and protecting over 10,000 orchestral compositions—some of which are irreplaceable. And the "Y and E" System of Filing not only conserves valuable space but also saves time and trouble in filing and finding.

Other "Y and E" products used in the offices of the Theatre and School of Music are Dry Insulated "B" Label Safes, Efficiency Desks, Filing Systems, Chairs, Costumers and Card Filing Sections.

### **YAWMAN AND ERBE MFG. CO.**

*Filing System Service, Equipment  
and Supplies*

108 EAST AVE. Stone 2431  
ROCHESTER, N. Y.



Monroe Junior High School, Rochester, N. Y.  
GORDON & KAELEBER, Architects

The above Building is one of the largest School Buildings in the country, and required about 24,000 cubic feet of stone trim, all of which was furnished by

## ONONDAGA LITHOLITE COMPANY

*Manufacturers of*

**High-Grade Cut Cast Stone**  
Syracuse, N. Y.

THERE is no Economy  
apart from Quality  
..  
There is no Saving  
except from Durability  
and Efficiency



Eastman School of Music & Theatre  
*Gordon & Kaelber, Architects*

One of our many successfully  
executed contracts which rep-  
resent one of the finest pieces  
of workmanship in the City  
of Rochester

*We shall be glad to co-operate*  
with Architects in giving their  
Clients the benefit of our 45  
years experience in Roofing  
and Sheet Metal work.

## KNOWLES & PECK CO. INC.

Architectural Roofing and  
Sheet Metal Works

80 FRANKLIN ST., ROCHESTER, N. Y.

ESTABLISHED 1878

## WHITMORE RAUBER & VICINUS INC.

### General Contractors

Dealers in  
BUILDERS' SUPPLIES

Cut Stone — Granite  
Interior Marble — Tile Work  
Cast Stone — Cement Blocks  
Asphalt Pavements — Floors  
Cement Walks — Driveways

279 South Avenue, Rochester, N. Y.

Office of  
ROCHESTER CLAY BRICK & TILE  
CORPORATION

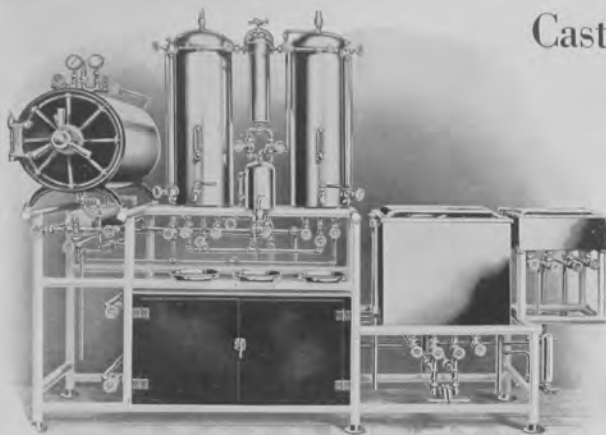


WROUGHT IRON WORK, EASTMAN THEATER

### Faucher-MacMurray, Inc.

IRON WORK FOR BUILDINGS  
310 Franklin St., Rochester, N. Y.





## Castle Sterilizer Service Helps the Architect

Our engineering department is ready and able to give expert advice and help in planning the sterilization requirements of any hospital. This service is free and without obligation.

The Castle Company makes the largest line of sterilizers for all uses. Hospital sterilizer installations are made to suit exact requirements. Standardized units are available for smaller institutions at low prices.

*Send for new Hospital catalog  
and specifications*

*Battery of Castle Sterilizers at St. Mary's Hospital, Syracuse, N. Y.  
Note the Blanket warmer.*



# CASTLE

Complete line of Hospital, Physicians', Dental and Bacteriological Sterilizers  
WILMOT CASTLE COMPANY, 1155 University Ave., Rochester, N. Y.



## Frigidaire

THE ICELESS REFRIGERATOR  
MADE BY DELCO-LIGHT CO.  
(DIVISION GENERAL MOTORS CORP.)

FRIGIDAIRE can be placed in the butler's pantry, the kitchen, or any other convenient place in the household; thereby eliminating the necessity of locating an outside icing door when building.

FRIGIDAIRE provides continuous cold, dry refrigeration for the household food supply. It keeps the food compartments cold continuously, a condition which is impossible with ice cooling, and freezes all the ice cubes needed.

FRIGIDAIRE mechanism is entirely automatic, starting when the temperature in the cabinet rises and stopping when the desired degree of cold has been secured.

Write or phone for full information to

**GEORGE A. McNERNEY**  
19 East Ave. Rochester, N. Y.





Madison Jr. High School, Rochester, N. Y.

Roofed with Standard Trinidad Asphalt Built-up Roof

WILLIAM J. MEYER COMPANY

Roofing Contractors and Sheet Metal Workers

SHEET METAL  
LEAD  
ZINC  
COPPER  
GALVANIZED  
STEEL AND IRON

79-81 Howell Street  
ROCHESTER, N. Y.

*Steel Ceilings   Skylights   Ventilating*

ROOFS OF  
TILE  
SLATE  
COPPER  
TRINIDAD  
ASPHALT

## FAIRHURST'S FOLDING PARTITIONS

(PATENTS APPLIED FOR)

The ORIGINAL sectionfold partition brought to perfection by the inventor, Mr. John T. Fairhurst. Installed in

Eastman School of Music  
Public School No. 44, Rochester, N. Y.  
Public School No. 25, Rochester, N. Y.  
Monroe Junior High School, Rochester, N. Y.

GORDON & KAELEBER, *Architects*

### DISTINCTIVE FEATURES

No hangers.   No half doors.   Ease of operation.  
Durability.   Beauty and quality of wood finish.

The only partition made with automatic adjustments allowing for misalignment of floor levels.

Also Manufacturers of Disappearing Door Wardrobe for Schools

*Send for details and specifications*

**John T. Fairhurst & Son, Inc.**

ELIZABETH TRUST BLDG., ELIZABETH, N. J.

*Branches in Principal Cities*

## HOMER KNAPP

General Building  
Construction

QUALITY HOMES

Rochester, New York

*Rochester's  
High Grade  
and Popular  
Store*

FINE FURNITURE  
FLOOR COVERING  
DRAPERY

—  
EVERYTHING FIRST CLASS  
WORKMANSHIP UNEXCELLED

HOWE & ROGERS CO.

## Laube Electric Co.

338 MAIN STREET EAST

A complete organization for the past 17 years for **WIRING**—either home, office or factory. New and exclusive lighting **FIXTURES**. High grade **RETAIL** merchandise. Efficient **REPAIR** and **MOTOR** departments. **APPLIANCE** department, including the **LAUNDRY-ETTE** Washing Machine and the **ELECTRIC REFRIGERATOR**.

*Radio Parts and Sets*

Rochester's Electrical Department Store

MAIN 6782

MAIN 6783

## Painted Decorations

THE FIRST CHURCH  
OF CHRIST SCIENTIST,  
ROCHESTER, N. Y.,  
ILLUSTRATED IN  
FOREGOING PAGES,  
WAS DECORATED  
BY US

☞

Rambusch Decorating Company

Two West Forty-Fifth Street, New York City

# American Clay and Cement Corporation

GENERAL CONTRACTORS AND  
BUILDERS SUPPLIES

1175 East Main Street  
ROCHESTER, N. Y.

## *Challenge Time with* NORRISTONE

The elements cannot efface the  
eternal strength, the constant  
solidity or the endowing beauty  
of NORRISTONE Cut Cast Granite

ARCHITECTS ENDORSE IT

BUILDERS USE IT

Manufactured by

**J. FRANK NORRIS**

107 Norris St., Rochester, N. Y.

*Also Special Interior Mantels and Garden Furniture*





Public School No. 37, Rochester, N. Y.

GORDON & KAEHLER, Architects

If you are planning to build, you will find it to your advantage to send your plans for our estimate.

The illustration shows one of our completed contracts, which is a good representation of our ability to serve you well.

**THE CURRAN-MASON CO., INC., *Building Construction***  
271 CENTRAL AVENUE ROCHESTER, N. Y.

## Home Furnishings & INTERIOR DECORATION

It is no longer a simple matter—furnishing and decorating the home has developed into an art.

The services of trained experts are now sought by those who wish their homes to reflect artistic taste in the hangings, the wall treatment, the floor coverings and furniture.

The proper materials, coupled with harmony in design and coloring are essential in securing the desired result.

On all such problems our Decorator of Interiors will be pleased to consult with you, and, as a trained expert in home furnishings, she is here to assist you in every possible way.

All materials may be supplied through our home furnishing departments.

*Third Floor*

**Sibley, Lindsay & Curr Co.**  
ROCHESTER, N. Y.

## MÖLLER PIPE ORGANS

America's leading instruments. We build pipe organs for churches, schools, theatres, residences and in fact for every purpose. Every organ is specially designed for the building in which it is placed. No organ too large or too small to interest us. Satisfaction always guaranteed. Booklets and specifications on request. The Eastman School of Music, Rochester, N. Y., is equipped with ten Moller Organs.

**M. P. MÖLLER** HAGERSTOWN  
MARYLAND

Real service and a satisfied customer is  
a paramount issue of our establishment

## MARTIN W. UTZ

Plumbing : Heating Contractor

1059 E. MAIN ST., ROCHESTER, N. Y.

STONE 2442

## HENRY LAMPERT

---

General  
Contractor  
and  
Mason  
Builder

---

BUILDERS' EXCHANGE  
ROCHESTER, N. Y.

## O'CONNELL ELECTRIC CO.

ELECTRAGISTS

Wiring  
Motors  
Fixtures  
Appliances

857 HUDSON AVE.

Tel. Main 827

ESTABLISHED 1865

INCORPORATED 1902

# John Luther & Sons Company

## General Contractors

87 STILLSON ST., ROCHESTER, N. Y.

# M. J. TIERNEY COMPANY

Equipment for  
Residences, Apartments,  
Institutions

---

*Stedman Naturized Flooring*

*Kerner Incinerator Kernerator*

*LaGrange Kozy-Kitch Cabinet*

*Murphy In-A-Door Beds*

---

CUTLER BUILDING  
ROCHESTER, N. Y.



### STEDMAN NATURIZED FLOOR

Made of rubber reinforced with cotton fibre  
Laid on wood or concrete in tile or runner forms  
Looks like marble Feels like velvet  
Wears like iron  
Silent

STEDMAN PRODUCTS CO.  
SOUTH BRAINTREE, MASS.

Agents in all large cities





# ZENITHERM

*The Universal Building Material*



William White Residence, Pelham, N. Y.  
Zenitherm Exterior. B. H. Simonsen, Architect.

Zenitherm looks like stone—works like wood. Can be sawed, drilled, planed or nailed. For exterior or interior walls, floors, base, border, trim, wainscoat, risers, string, stair treads, ceilings, arches, etc.

*Weatherproof, Inert and Durable. Installed by Carpenters.*



Stroheim & Romann, Fifth Avenue and 57th Street, New York.  
Zenitherm Walls and Floor. Eugene Schoen, Architect.

Send for samples and complete information.

The Construction Specialties Company,  
25 Main Street, East, Rochester, N. Y.  
Local Agents

## ZENITHERM COMPANY

GENERAL OFFICES

390-396 Frelinghuysen Avenue Newark, N. J.

A FORM FOR EVERY PILE  
A PILE FOR EVERY PURPOSE

# Raymond Concrete Pile Company

140 CEDAR STREET  
NEW YORK

Pittsburg	Baltimore
Cleveland	Philadelphia
Kansas City	Atlanta
Boston	Detroit Chicago

# AMERICAN-MARSH PUMPS



Centrifugal and  
Direct Acting

*Over 160,000 in Successful Operation*

American-Marsh Pumps combine extreme simplicity with an unusually low steam consumption. They are the result of over 35 years' experience in the manufacture of high-grade pumping machinery. The line includes:

Vacuum Pumps	Air Compressors	Deep Well Engines
Centrifugal Pumps	Power Pumps	Jet Condensers

*May we send you a catalog?*

## AMERICAN STEAM PUMP CO.

BATTLE CREEK, MICHIGAN

CHICAGO OFFICE	NEW YORK OFFICE
1220 Monadnock Block	17 Battery Place

**Y**OUR requirements for an attractive and enduring enclosure for property of any kind will be served most satisfactorily by our Organization.

Special brass and wire work for Theatres, Schools, Banks, Residences and all types of buildings.

---

*Estimates and Advisory Service  
rendered without obligation*

---

## White Wire Works Company

79 EXCHANGE STREET

ROCHESTER, N. Y.

### The following buildings

*are proofs of our ability to produce  
high grade electric work and  
satisfied clients:*

Monroe Jr. High School  
Public Schools No. 1, 8, 16, 21, 33  
Madison Jr. High Clock System  
Democrat and Chronicle Wiring and Fixtures  
Residence for Mr. Harold Jenkins  
Residence of A. M. Lindsay, Jr.



**T. R. Huber Electric Company, Inc.**

ELECTRAGISTS

65 South Ave.      Rochester, N. Y.

TIN CLAD FIRE DOORS  
HOLLOW METAL SASH  
KALAMEIN  
SASH AND DOORS

**H. W. GOETZMAN**

SASH, DOORS, INTERIOR TRIM  
UPSON WALL BOARD



NORTH WATER STREET  
ROCHESTER, N. Y.

**RANKIN  
CONSTRUCTION CO.  
INC.**

Mason and  
General  
Contractors

188 ELMENDORF AVE.  
ROCHESTER, N. Y.

**FRED GLEASON**

---

Contractor  
and  
Builder

---

ROCHESTER  
NEW YORK

**Francis X. Yeoman**

CONTRACTOR AND  
BUILDING  
WRECKER

---

**EXCAVATION**

---

57 LOZIER ST.  
ROCHESTER, N. Y.

ARTISTIC FACE BRICK  
(ALL COLORS)

HOLLOW BUILDING TILE

**THEODORE H. SWAN**  
446 POWERS BLDG. ROCHESTER, N. Y.

**Edwd. F. Caldwell & Co., Inc.**

MAKERS OF GAS AND  
ELECTRIC LIGHT FIXTURES  
ORNAMENTAL BRASS AND  
WROUGHT IRON WORK

36-38-40 West 15th Street, New York



# JOHN B. PIKE & SON

GENERAL CONTRACTORS AND BUILDERS

STORAGE YARD  
HAYWARD AVENUE

OFFICE AND FACTORY  
1 CIRCLE STREET

ROCHESTER, N. Y.

William J. Morrey, Inc.

ROOFING  
and Sheet Metal  
Contractor

GENERAL  
JOB BING

399-407 EXCHANGE ST.  
ROCHESTER, N. Y.  
MAIN 638

PHONE MAIN 1972

Arthur B. Reddington  
*PLUMBING CONTRACTOR*

Steam  
and Hot Water  
Heating

218 SOUTH AVENUE  
ROCHESTER, N. Y.

## The Evanston Sound-Proof Door

A Distinctive and Valuable Contribution to  
Architecture

*The finest examples of Music School  
design and construction in recent years,  
and probably the most notable in the  
world, are as follows:*

EASTMAN SCHOOL OF MUSIC  
YALE UNIVERSITY  
UNIVERSITY OF ILLINOIS  
UNIVERSITY OF MINNESOTA

*All are equipped with  
EVANSTON SOUND-PROOF  
DOORS*

It is a sectional door containing deadening quilt  
 $\frac{7}{8}$  inch thick. An inner hidden mechanism her-  
metically seals the top, bottom and two sides  
instantly, easily and forcibly. It looks like any  
other door, being made to harmonize with exist-  
ing woodwork, or according to special designs  
of your architect. Accordion doors are also  
treated in the Hamlin manner. Catalog sent on  
request.

**IRVING HAMLIN**

*Inventor and Patentee*

716 University Place Evanston, Illinois



Res., John G. Woodbury, Douglas Rd., Rochester, N. Y.  
Gordon & Kaelber, Archts.

## JUNE AIR

*In December*

Think what it would mean to you next winter to  
have the air in your house as fresh and sweet as it  
is now. It means *exactly* that to thousands who  
have installed Kelsey Health Heat.

565 Fifth Ave.  
New York  
City

**THE KELSEY**  
WARM AIR GENERATOR

405 P. O. Bldg.  
Boston  
Mass.

SYRACUSE, N. Y.

C. W. TROTTER & SON, Distributors, 55 Elm St., Rochester, N. Y.

PHONE GLENWOOD 291

## P. J. Donovan

### Contractor

*Plumbing, Heating and Tinsmithing  
Estimates promptly given*



705 LAKE AVE.  
ROCHESTER, N. Y.



Eastman School of  
Music, Rochester,  
N. Y. Gordon and  
Kaelber, Architects.



Monroe Jr. High  
School, Rochester,  
N. Y. Gordon and  
Kaelber, Architects.

**WM. SUMMERHAYS & SONS**  
CHIMNEY BUILDERS  
ROCHESTER, N. Y.

WHEN BUILDING DON'T FORGET  
THE MOST IMPORTANT  
PART OF ANY STRUCTURE

## GOOD PLUMBING

Vapor or Hot Water Heating

Installed by

**A. J. HEINZLE**

666 University Ave.

### 2800 TONS

of steel were used in the construction of the Eastman School of Music and Theatre, which was furnished and erected by us. We also furnished and erected the iron stairs for the School of Music.

**F. L. HEUGHES & CO.  
Inc.**

*Engineers  
Designers  
Manufacturers*

**Structural Steel and Iron  
Works**

Sole Manufacturer of the "Heughes"  
Patent Steel Post Cap and Steel Joist  
Hanger.

OFFICES-WORKS: LYELL AVENUE  
ROCHESTER, N. Y.

### WALTJEN'S

Painters and Decorators

WALL PAPERS

394 EAST MAIN STREET  
ROCHESTER, N. Y.



## Plumbing, Steam and Hot Water Heating Repairs and Supplies

**W**HEN you build or remodel  
remember that no one thing  
is more important than your  
plumbing and heating. Our wide  
experience in the installation of  
plumbing, hot water, steam or  
vapor heating is your assurance of  
a first class job.

One-third of the cost of a good  
plumbing job is for work hidden  
from sight, beneath walls and  
floors, and underground. Costly  
trouble is sure to develop unless  
this unseen work is properly done.  
Reliable materials and skillful  
workmanship cost less in the end  
—and we can supply them.

**I**F your plumbing or heating  
system needs repairing, whether  
in your home, office or factory,  
we are at all times ready to give  
you prompt and satisfactory ser-  
vice. The quality of the materials  
used plus this service means your  
complete satisfaction.

We also carry an extensive line  
of plumbing and heating supplies  
and accessories that is unsurpassed  
in quality.

That you may receive the best  
of service here is the ideal of every-  
one in our organization.

### HOWE & BASSETT CO., Inc.

ESTABLISHED 1885

23-25 STILLSON STREET

ROCHESTER, N. Y.





---

---

# Architectural Catalog Co.

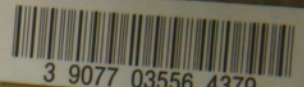
MAIN OFFICE  
15 WEST 38th STREET  
NEW YORK CITY

*Architectural, Engineering  
and  
Building Publications*

---

---





3 9077 03556 4379