

G517p

Souvenir

4335

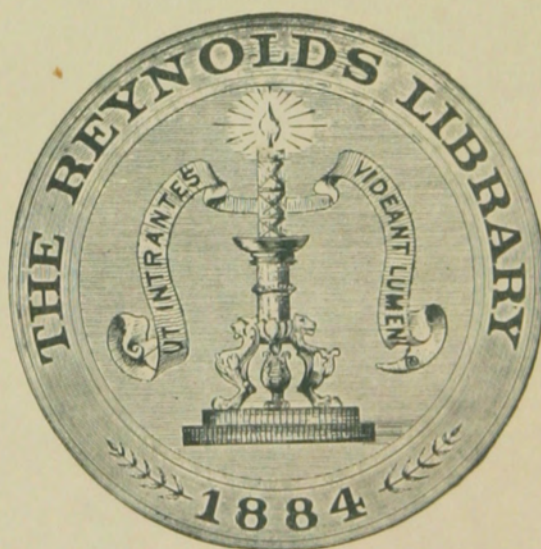


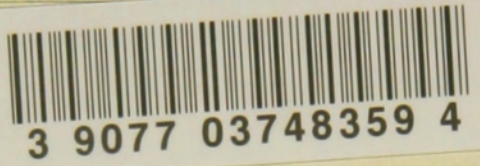
SOUVENIR BOOK
of the
EASTMAN
SCHOOL OF MUSIC
and
EASTMAN THEATRE
ROCHESTER, N. Y.

Rochester, N. Y. University.

Eastman School of Music

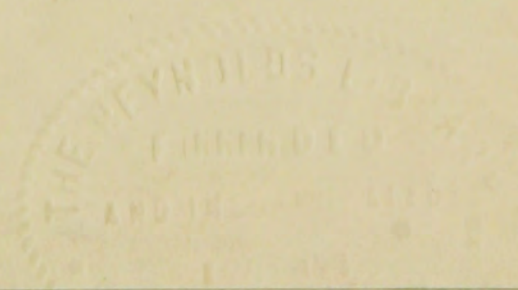
R 93
r780.72
R676er

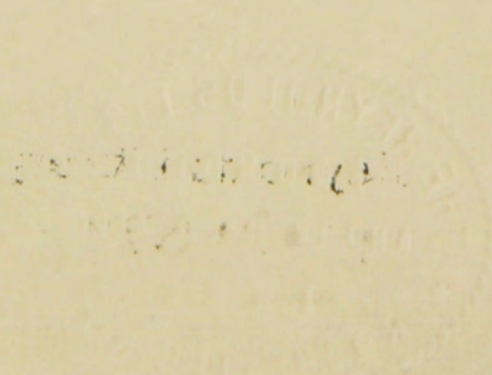




A DESCRIPTIVE
AND PICTORIAL PRESENTATION
OF SOME FEATURES OF
THE EASTMAN SCHOOL
OF MUSIC AND
THE EASTMAN THEATRE

3





R
2780.72

R 676 ea

EASTMAN SCHOOL OF MUSIC

OF

THE UNIVERSITY OF ROCHESTER

DR. HOWARD HANSON, *Director*

THE Eastman School of Music is one of the schools of the University of Rochester. It is a gift to the university made by George Eastman. In 1918 Mr. Eastman enabled the university to acquire the property and corporate rights of the Institute of Musical Art, an institution of considerable student numbers and high musical standards. In 1919 Mr. Eastman made secure the future expansion and possibilities of this department by purchasing the site for its present building and contributing funds for its erection and for the endowment of the school. Since that date Mr. Eastman has added largely to his gifts, which now exceed a total of \$12,000,000.

The site selected for the building is within a few moments' walk of the business section of the city, and yet removed from the noise and confusion of the city's commerce. The school building furnishes offices, studios and classrooms for a student body approximating 2,000, and a small auditorium seating 500 persons for recitals and chamber music. The building is of great beauty and has the most perfect acoustics, ventilation, lighting and equipment that can be obtained.

The entrance to the Music School is by a great corridor, extending through the building to a depth of 187 feet. A grand staircase at the end of this corridor leads to another corridor on the second floor, which is so paneled that it serves as a gallery for exhibitions of pictures, procured for the school by the Memorial Art Gallery of the University. Both corridors are connected by doors to the Eastman Theatre and are used as promenades during the intermissions of concerts and for social functions of the school.

Beautiful Recital Hall

On the south side of the first floor corridor is Kilbourn Hall, a memorial to Mr. Eastman's mother, Maria Kilbourn. It is Italian renaissance in design, of simple dignity and richness. Chamber music and faculty and student recitals find an ideal home in Kilbourn Hall. The four-manual organ is specially designed for the refinement of tonal effects which the superior acoustics of this room makes possible.

For both practice rooms and studio uses the Eastman School of Music is equipped to secure the utmost convenience. The latest building project to be undertaken is the erection of a twelve story

Reynolds Library

1-716712

28-S-42-Mo-71

building across Swan Street from the main building, and to be connected to the main building by over-street bridges on two floors. In this new building will be additional practice rooms, quarters for the opera department and a gymnasium of the latest type of construction and furnishings. In the school are some seventy Steinway pianos, practice pianos of other makes and thirteen practice organs of both two and three-manual types, two studio organs of three-manual type, in addition to a Wurlitzer organ installed in the motion picture studio, in the Eastman Theatre.

Complete Musical Education

The Eastman School of Music offers complete education in music. It conducts courses leading to the degree Bachelor of Music; courses leading to the Eastman School certificate; a preparatory course preparing students for entrance to its degree and certificate courses from the earliest stages of progress; and special courses. Students in the degree courses pursue academic studies in the College of Arts and Science of the University of Rochester as a part of their curricula. The school orchestra and various ensembles afford ample opportunity to players of orchestral instruments for the experience required for professional playing. Its motion picture organ department offers advantages accruing from close association with the Eastman Theatre.

Its operatic department not only gives a complete course in operatic training but, through the Rochester Opera Company, provides advanced students the opportunity of taking part in professional operatic performances with an excellent orchestra and under an eminent conductor.

An important accessory to any music school is its library. The Eastman School of Music is fortunate in that the Sibley Musical Library, a branch of the university library, is installed in its building. This library is a gift to the university by Hiram W. Sibley. It contains approximately 15,000 volumes, and is supplemented by the school's purchases of material particularly required by its work.

The Eastman School of Music has erected a dormitory building for women students on University Avenue, adjacent to the campus of the Women's College of the University. Three dormitory units are here provided and equipped with all conveniences for contented student life.

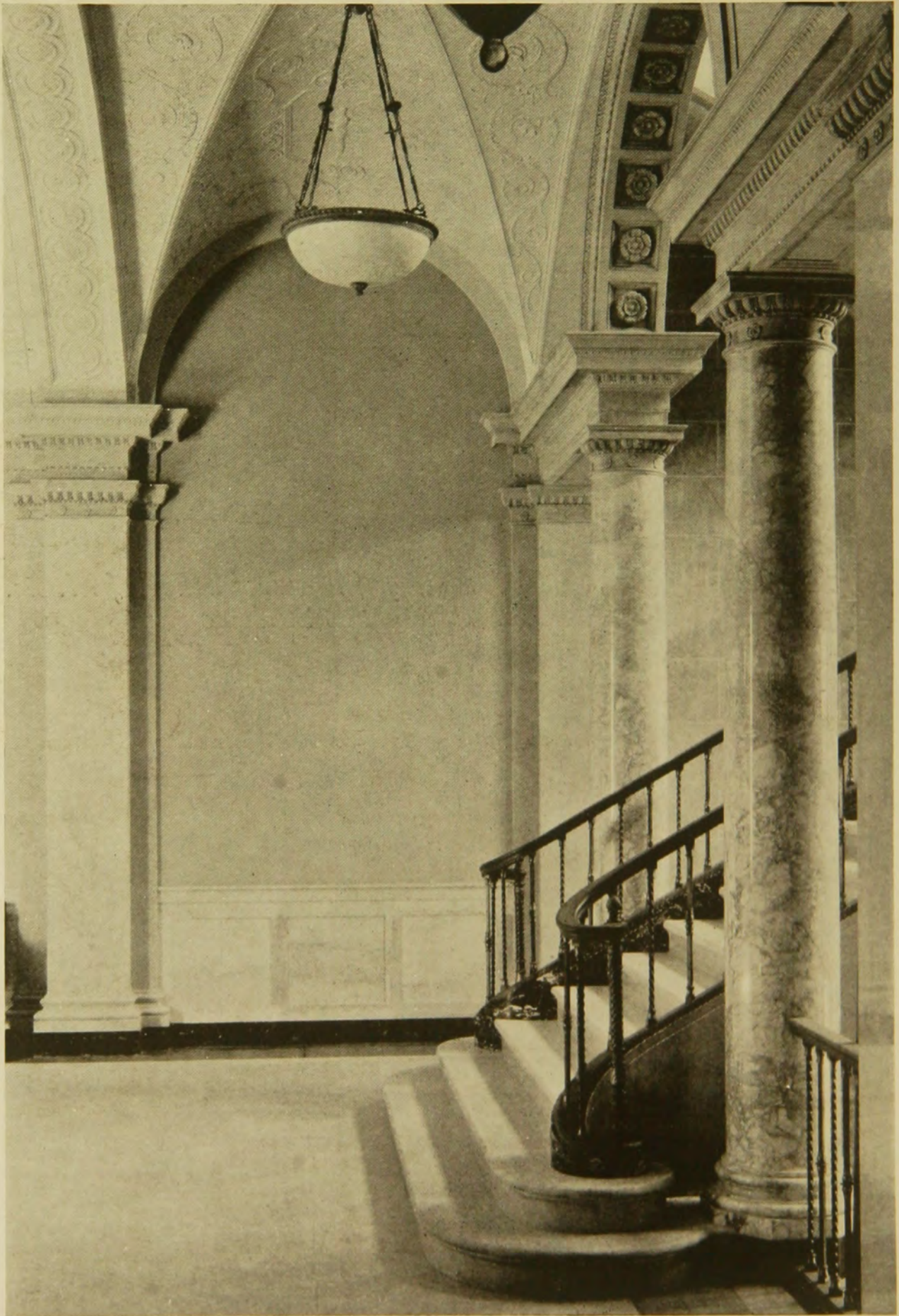
The Eastman School is equipped with a complete radio broadcasting apparatus, Station WHAM, which is placed at the service of the school by two Rochester newspapers, the *Democrat and Chronicle* and the *Rochester Times-Union*. Connection with the radio establishment is made from both Kilbourn Hall and the Eastman Theatre.



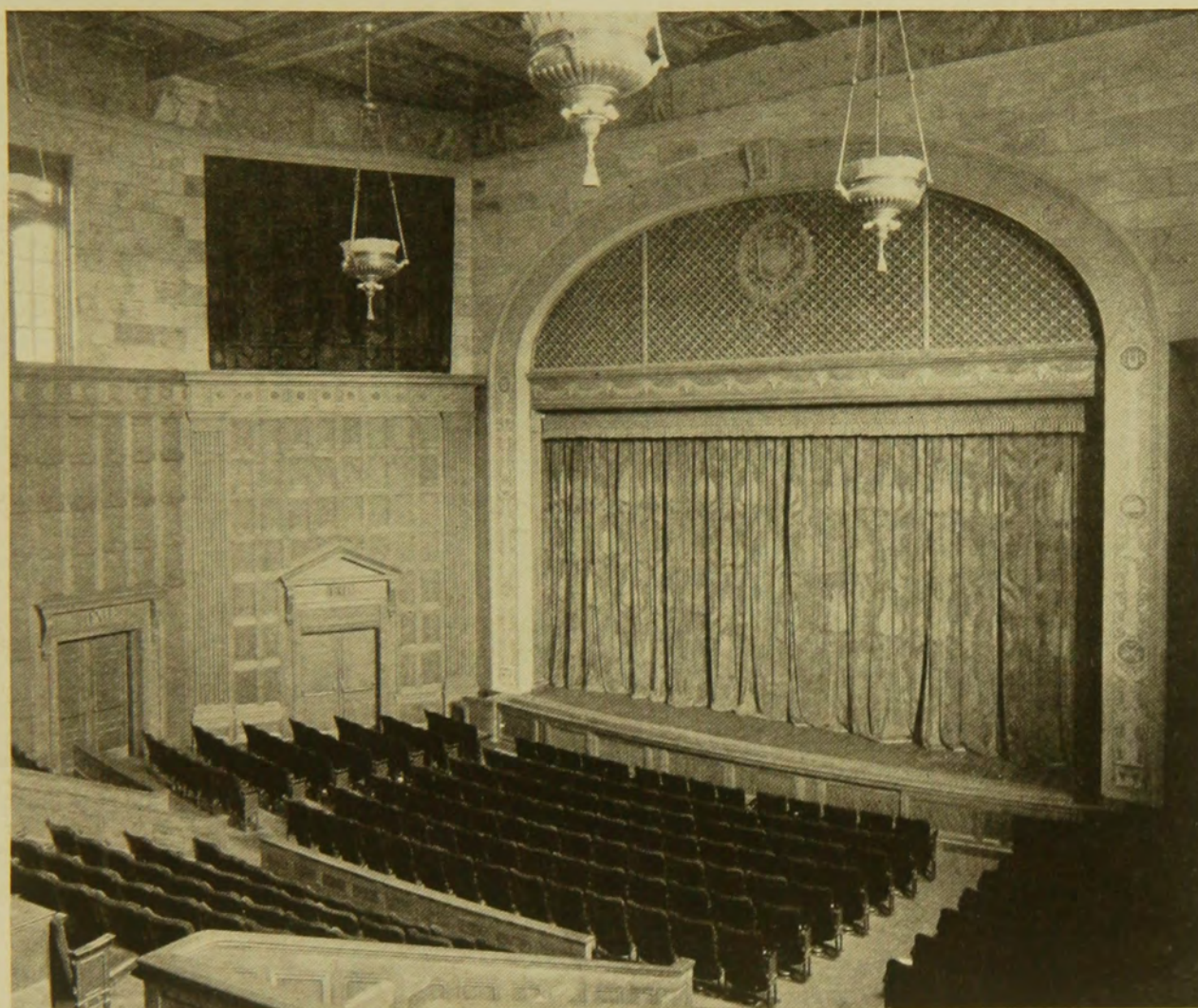
*Girls' dormitory of Eastman School of Music.
Accommodating 210 Students*



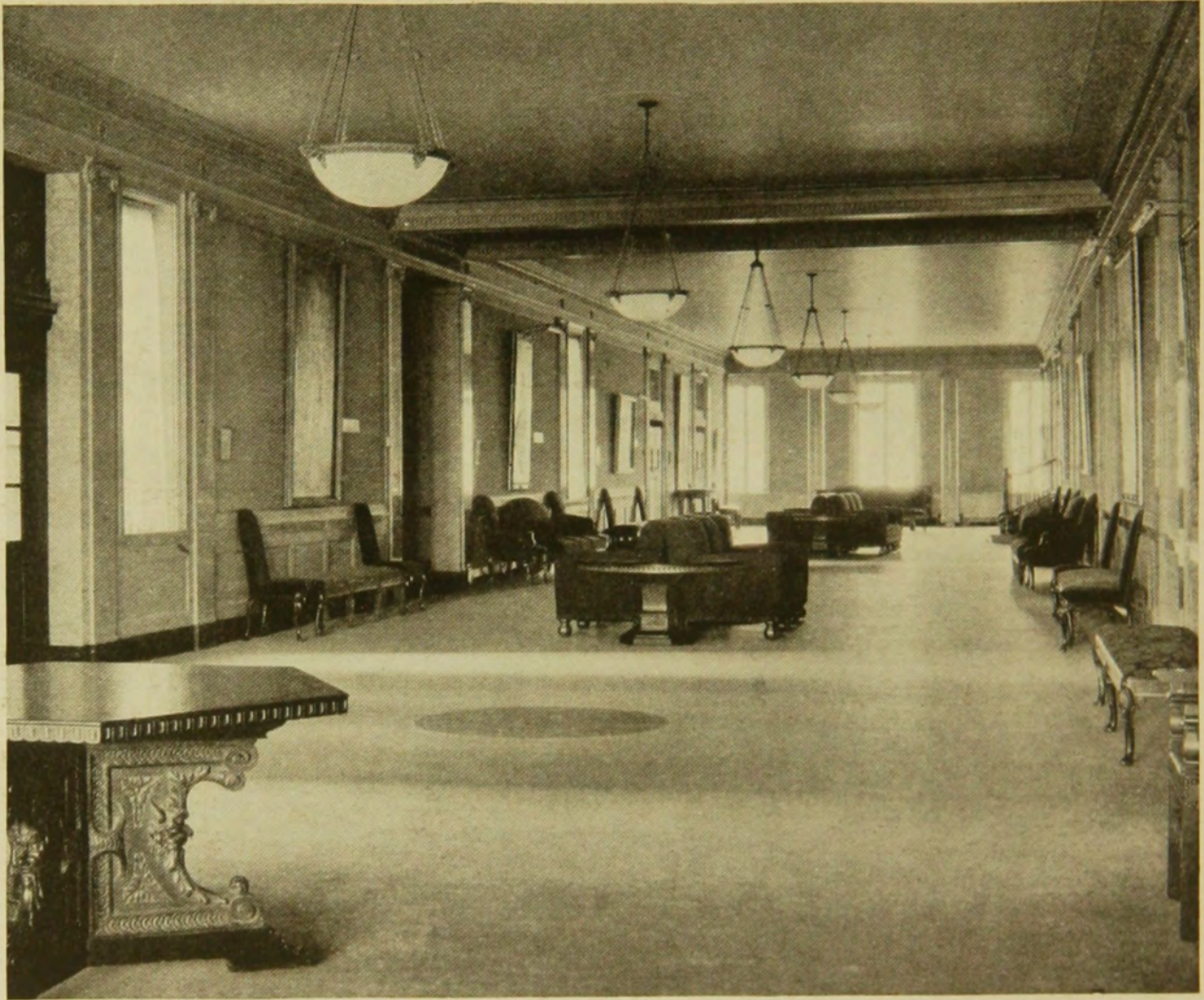
*Exterior view Eastman School of Music, tower of Broadcasting
Station WHAM on roof. A twelve-story addition to the school is
now under construction in rear, to be connected by overhead bridge.*



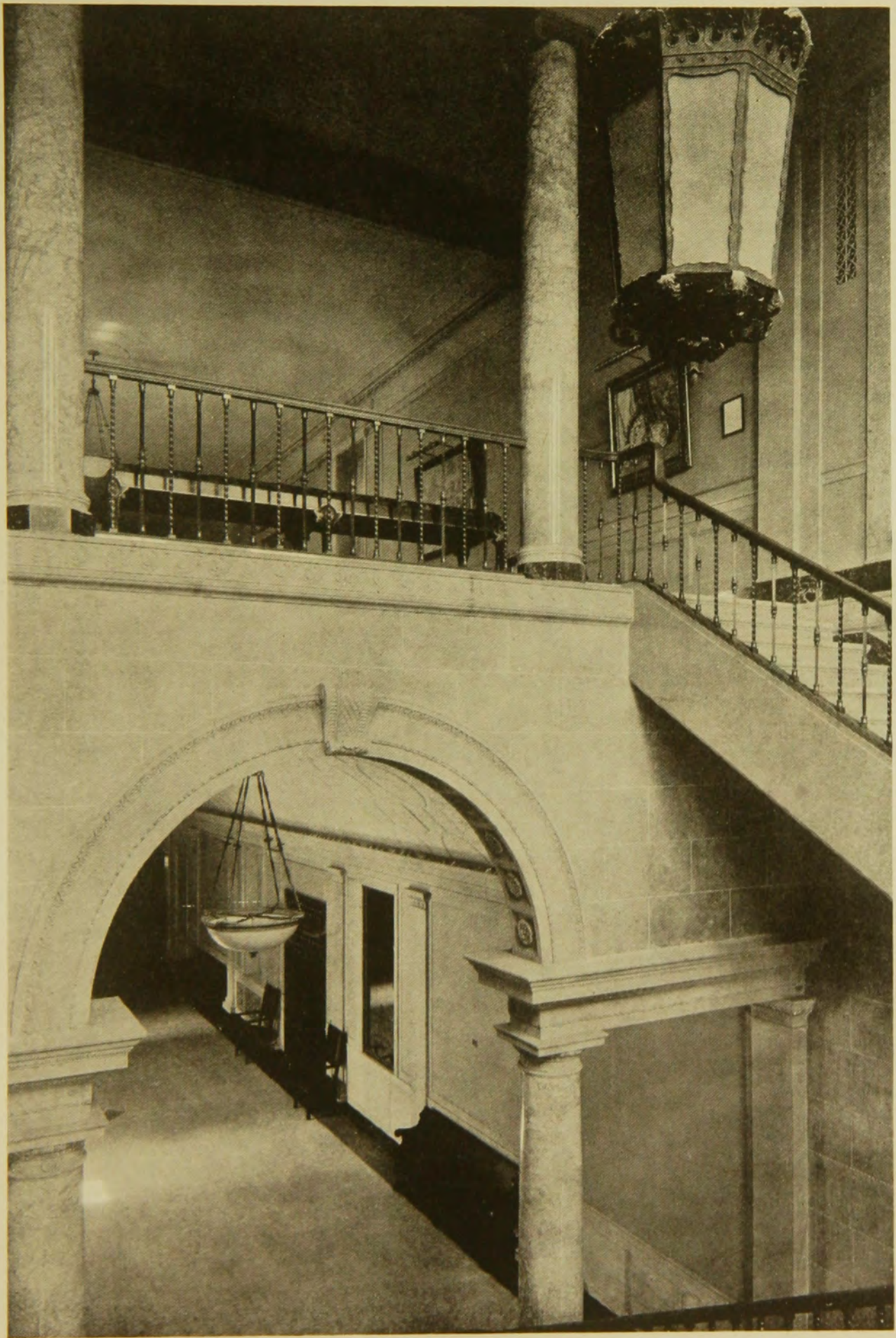
Beginning of grand stairway leading from lower to upper corridor in School of Music.



A corner of Kilbourn Hall, the beautiful auditorium of Eastman School of Music, used for operatic performances, student recitals and chamber music concerts.

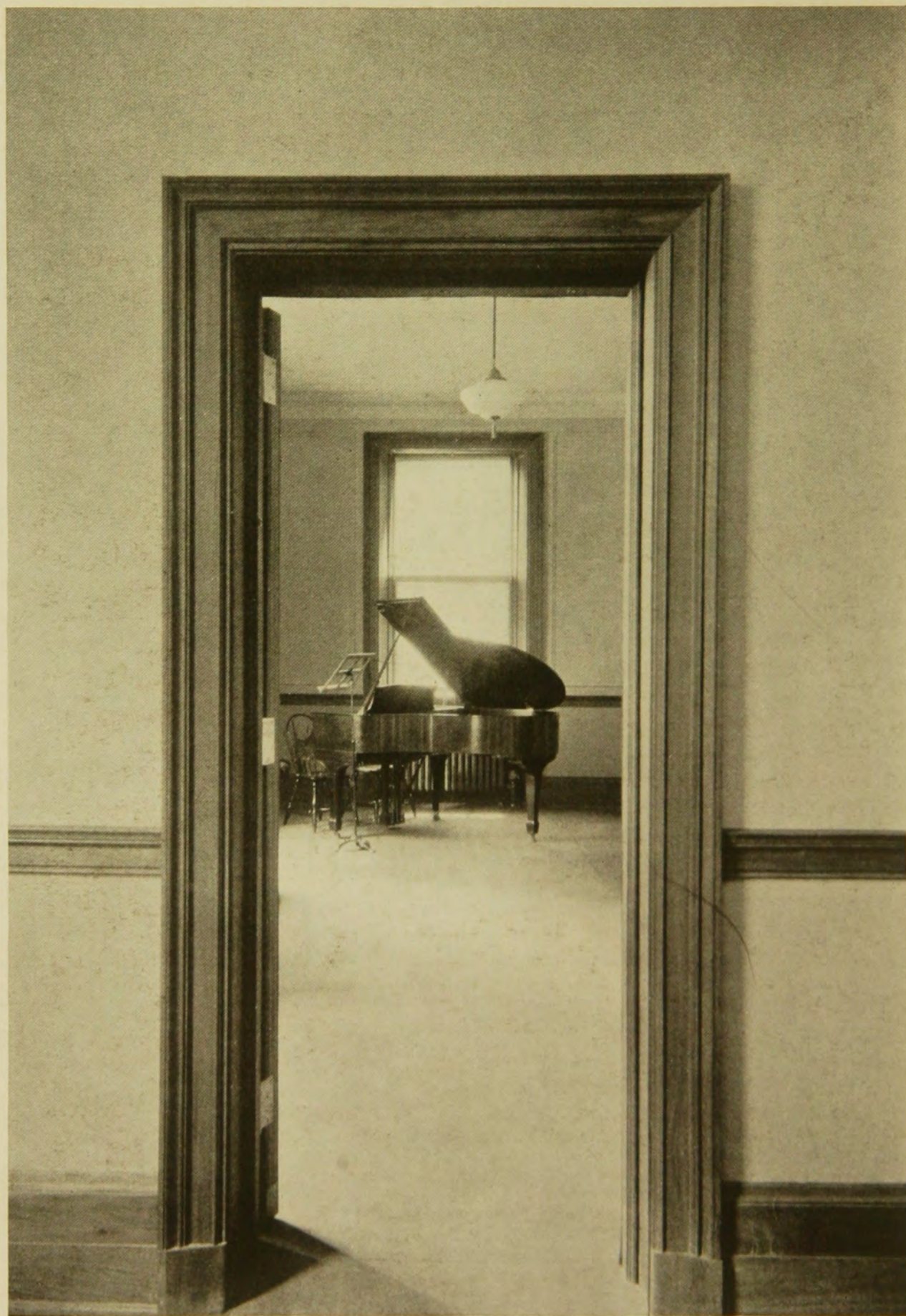


Upper corridor, Eastman School of Music, used with similar lower corridor for promenade on concert nights.

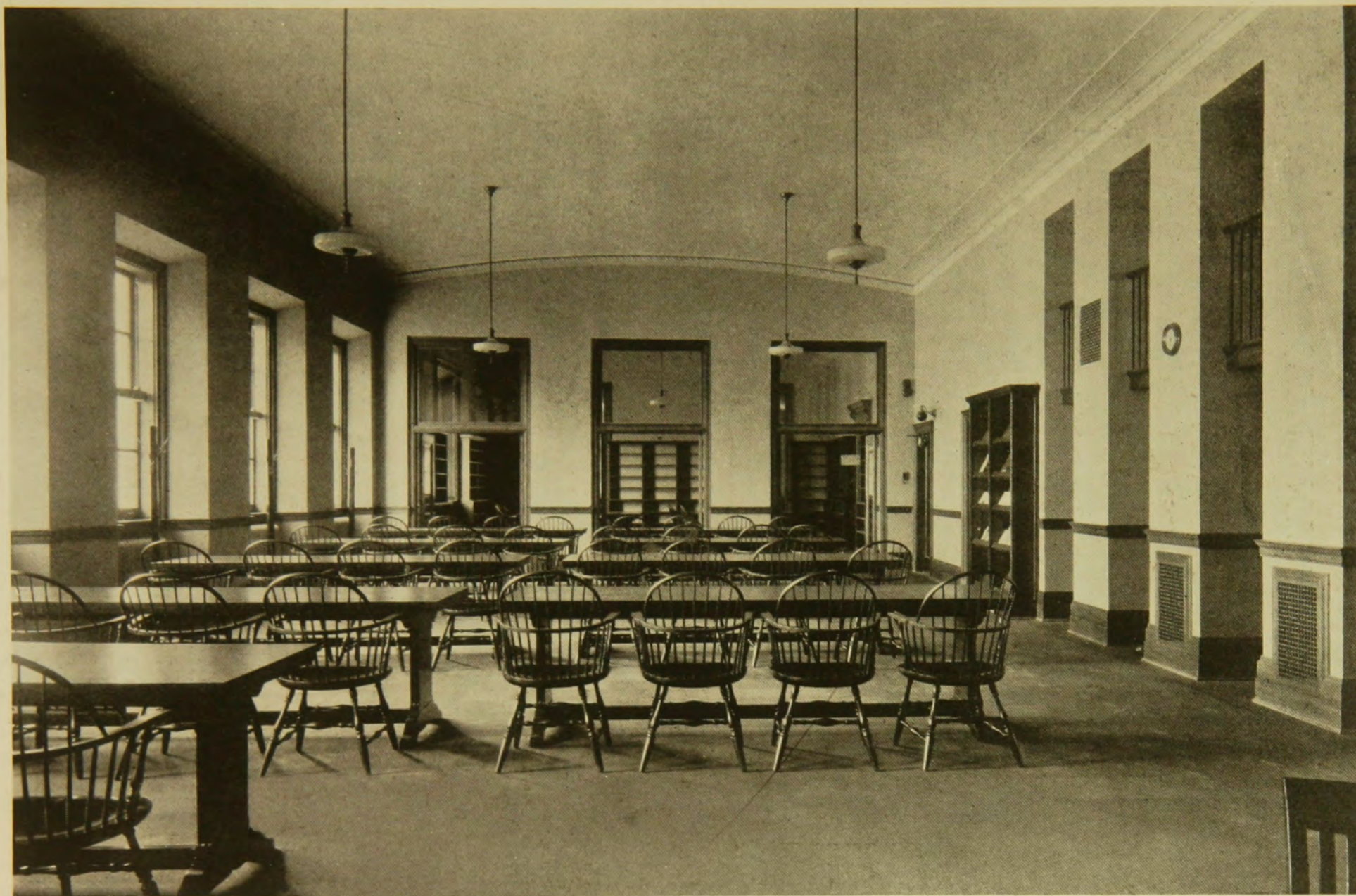


*Sectional view showing upper and
lower corridors*

Reynolds Library
1- 716712



A piano studio.



Reading room of the Sibley Musical Library which is open to the public.

Some Interesting Features of the EASTMAN THEATRE

"ERECTED for the Enrichment of Community Life," and opened September 4, 1922—with the Eastman School of Music, the gift of George Eastman to the University of Rochester, total building cost being approximately \$6,650,000.

Devotes six days each week to motion pictures and one day to concerts.

Equipped for any form of presentation from motion pictures to grand opera.

Seats 3,400 people.

Maintains Eastman Theatre Orchestra of 70 members.

Five story scenic and production studio connected with theatre by overhead bridge. Here theatre makes all of its own productions.

Has movable orchestra pit, in two sections, raised or lowered at will of orchestra conductor.

Houses miniature theatre for training students in organ motion picture accompaniment.

Four-manual Austin organ with 164 stops, raised or lowered independent of orchestra stage.

Interior lighting provided by giant chandelier, weighing two and one-half tons and containing 585 lights.

Has its own musical stock company and dance corps.

Eight murals decorate the walls. As you face the stage, the paintings on the right are the work of Barry Faulkner. Reading from the stage back, they represent Religious, Hunters', Pastoral and Dramatic Music. Those on the left wall were painted by Ezra Winter. Reading from the stage, they are Festival, Lyric, Martial and Sylvan Music. A Maxfield Parrish Panel called "Interlude" and a 17th century Giordani decorate the stairway leading to the Grand Balcony.

The panels in the lobby are Cupid and Psyche decorations, originally painted by the French artist, La Fitte, for Napoleon.

THE EASTMAN THEATRE

ERIC T. CLARKE, *General Manager*

CARVED into the granite tablet that surmounts the Ionic pillars of the Eastman Theatre is the brief inscription: "Erected for the Enrichment of Community Life."

Those seven words summarize the aims of an institution that is absolutely unique in its plan of operation and which is generally regarded, from the standpoint of exterior architectural attractiveness and interior artistic environment, as the most beautiful motion picture theatre in the world.

GIFT OF GEORGE EASTMAN

The Eastman Theatre is the gift of George Eastman to the community through the University of Rochester, which holds title. It is not a commercial enterprise in the ordinary sense of theatrical activity. The deed of gift provides that if a surplus shall ever accumulate from the operation of the theatre such surplus shall be used for the development of music generally and for no other purpose. Any profit accruing must either go back into the theatre for the improvement of its programs or be devoted to some specific musical purpose sponsored either by the Theatre or by the Eastman School of Music. There are no stockholders and the only dividends paid to anybody are those drawn by the public in the shape of the rich entertainment provided at such a nominal cost.

It is not merely a motion picture theatre. It is a great center of community entertainment, the home of practically all of the city's musical activity and a gathering place for any event that has a real community significance. Its scale of prices is lower than prevails for de luxe presentation elsewhere, bringing its advantages within the range of the most meager amusement budget.

DESIGN AND COLOR SCHEME

The exterior is of Indiana limestone in a free adaptation of Italian renaissance style. Ionic pilasters, broken at entrances to both Theatre and School of Music by columns of Vermont marble, give unity to the main facade. Across the entire front stretches the longest marquee that graces any theatre in the world.

The interior design is Italian renaissance, Venetian in treatment. The color scheme is blue and gold, supported by warm grays and reds. The central dome of the ceiling is a great gilded sunburst, from which is suspended a crystal chandelier, 14 feet in diameter and 35 feet in depth.

An unusual and appreciated feature is the extension of the comfort and environment of the lower levels to the grand balcony,

where the lowest priced seats are located. In many respects this section of the theatre, so often neglected or cheapened, is the most attractive part of the house. It is approached through a magnificent promenade and on its level are the exquisite murals and other paintings.

UNDER SAME ROOF WITH SCHOOL

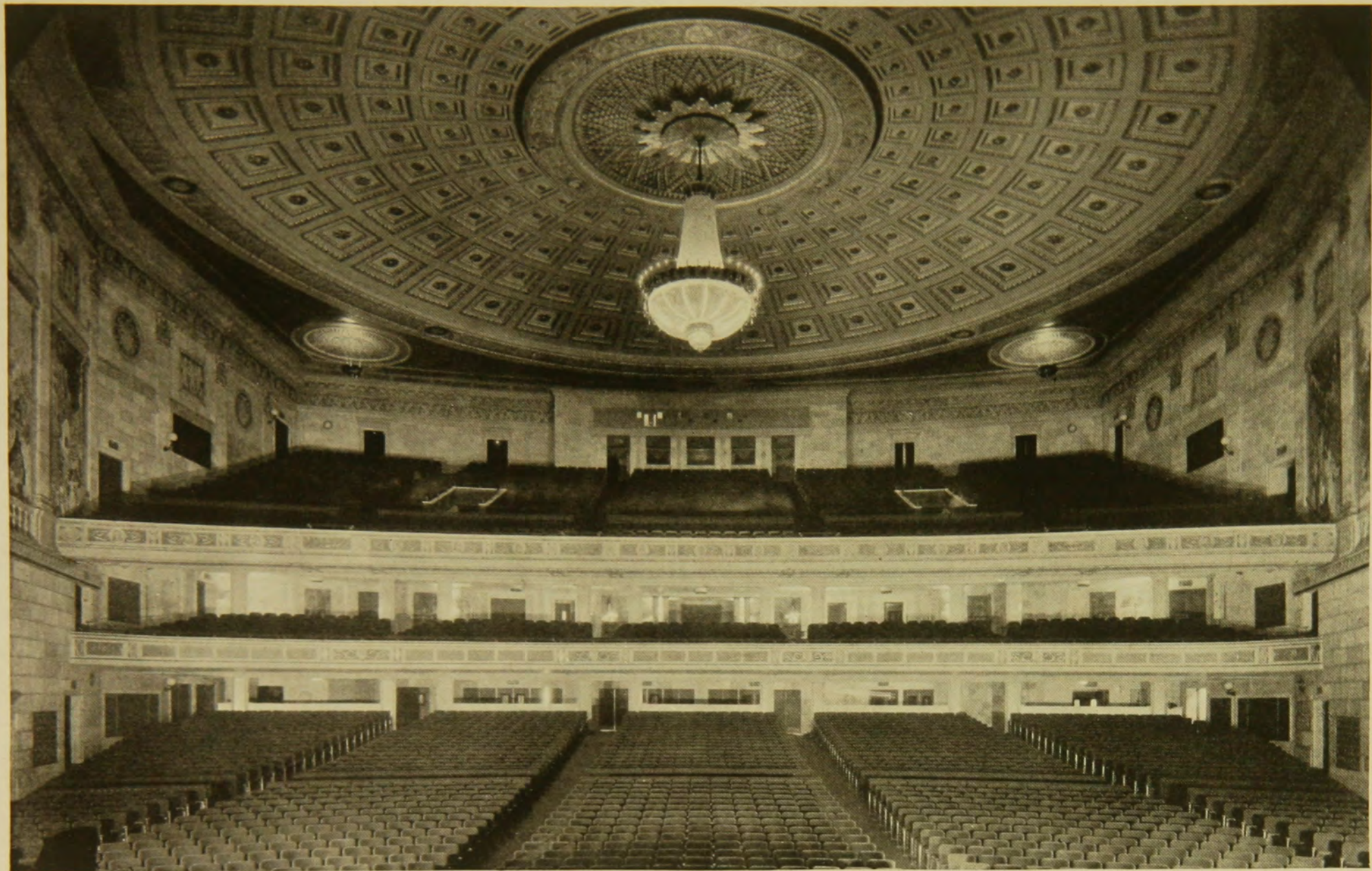
The Eastman Theatre and the Eastman School of Music, although separate in operation, are under the same roof, divided by great corridors which serve as promenades on concert nights. The theatre is dedicated to motion pictures and music. One day each week is set aside as concert day, with a symphony concert in the afternoon and a vocal or instrumental concert by world-famous artists in the evening. The mission of the theatre is to furnish motion picture and musical entertainment of the highest quality and at the same time to aid in the musical development of the whole community. The motion picture audiences hear good music played by an orchestra of seventy pieces, and their musical knowledge and appreciation are being steadily developed, with the result that there is gradually being built up a music public of large proportions keenly interested in the variety of concert offerings provided.

The Eastman School of Music, in addition to providing a general musical education, prepares musicians for concert careers. It trains performers. The Eastman Theatre trains listeners. One achievement is as essential as the other and together they provide a logical, definite program of development.

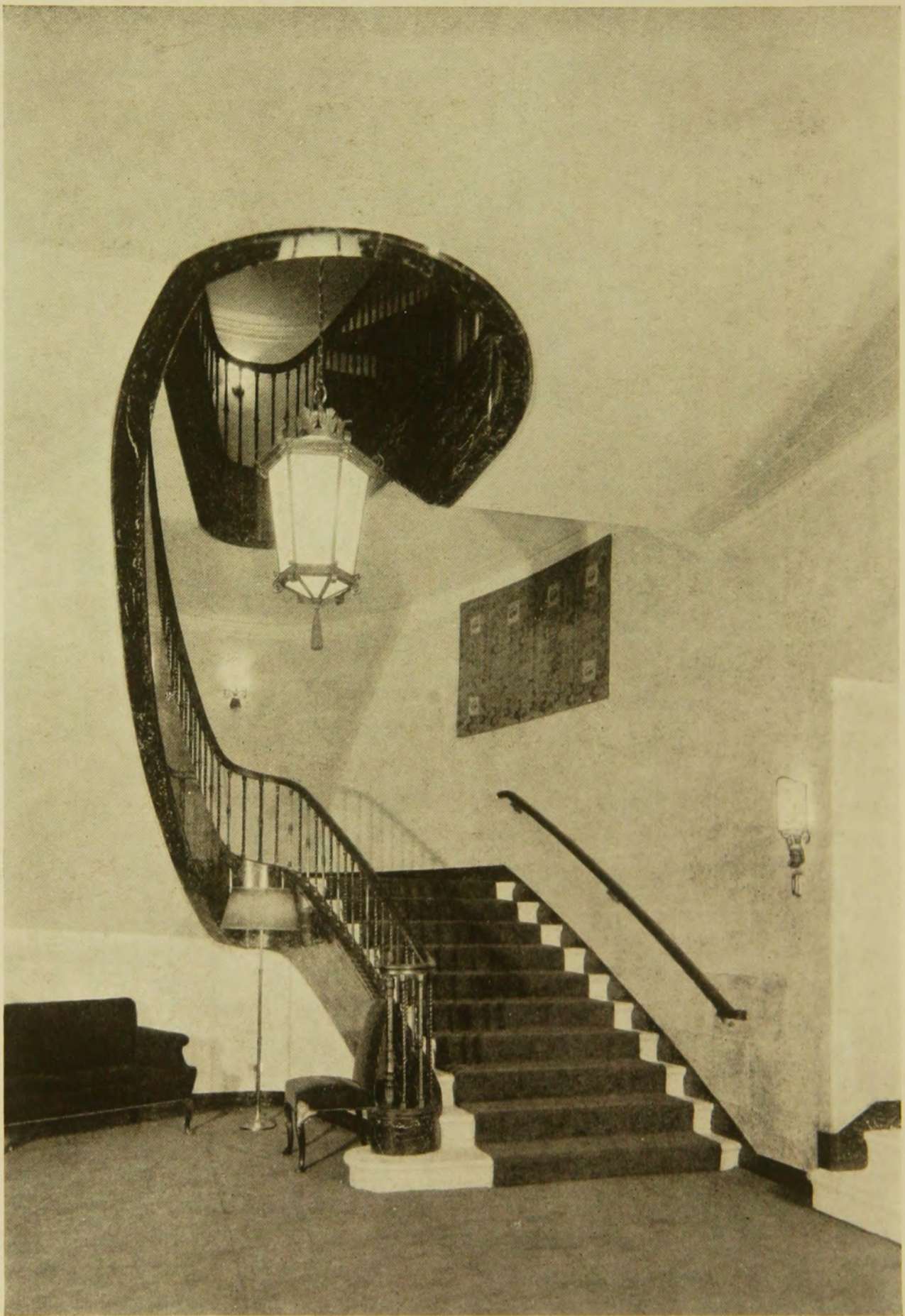
The Eastman Theatre Orchestra constitutes the nucleus of the Rochester Philharmonic Orchestra, one of the major symphonic ensembles of the country, which was established in March, 1923.

UNIQUE PLAN FOR ORCHESTRA

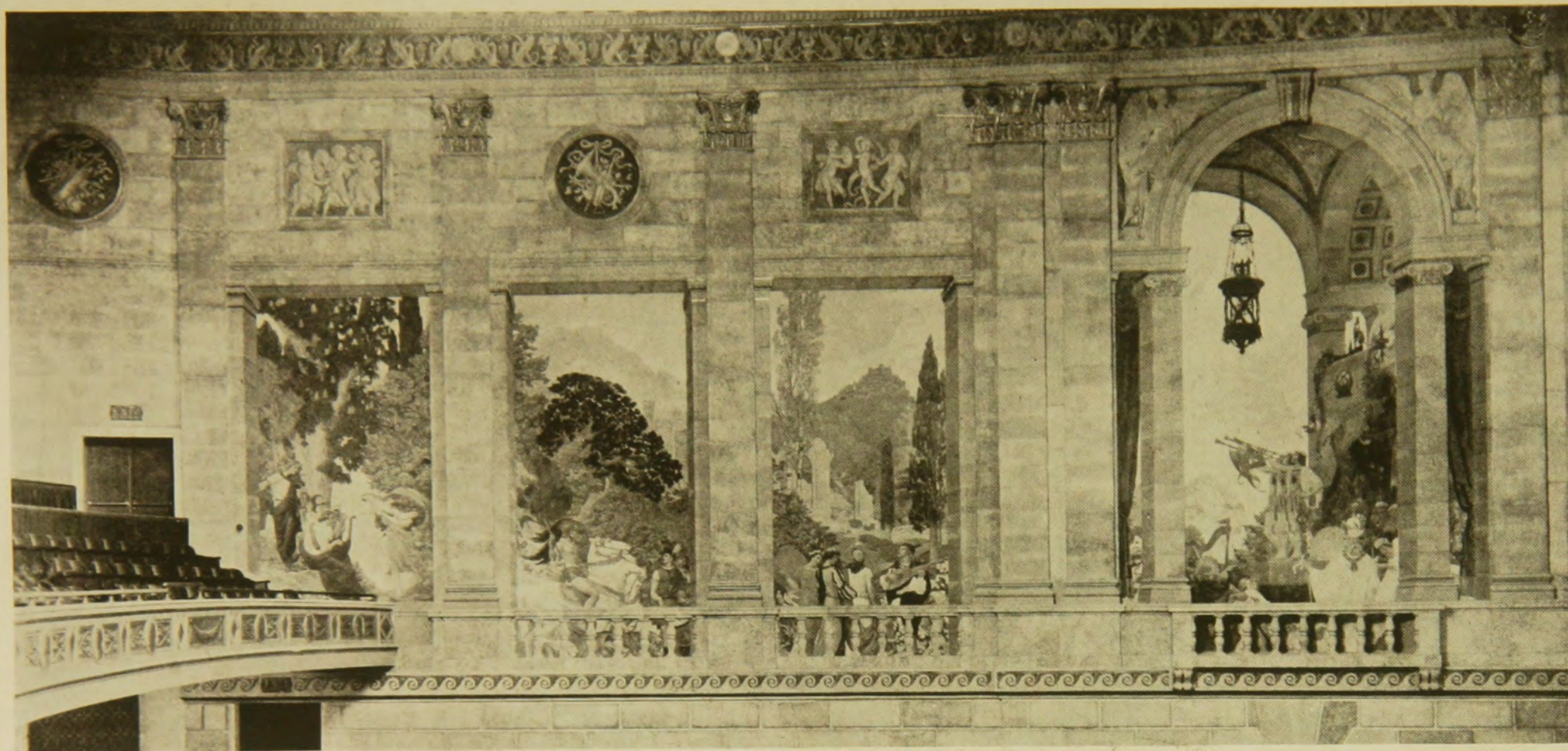
The Philharmonic Orchestra gives afternoon and evening concerts during the fall and winter seasons. The motion picture performances support the Eastman Theatre Orchestra, which constitutes about five-sixths of the personnel of the Philharmonic, thus greatly reducing the cost of maintenance. It costs from \$250,000 to \$300,000 in the average city to maintain a symphony orchestra. In Rochester, it costs about \$50,000 to augment the Theatre Orchestra sufficiently to bring it to full Philharmonic proportions. This sum is underwritten each year by the Eastman Theatre Subscribers' Association, a group of generous citizens who make an annual financial contribution in order that the entire community may have the enjoyment of fine symphony concerts.



Eastman Theatre Auditorium, Seating 3,400, as it Looks from the Stage.



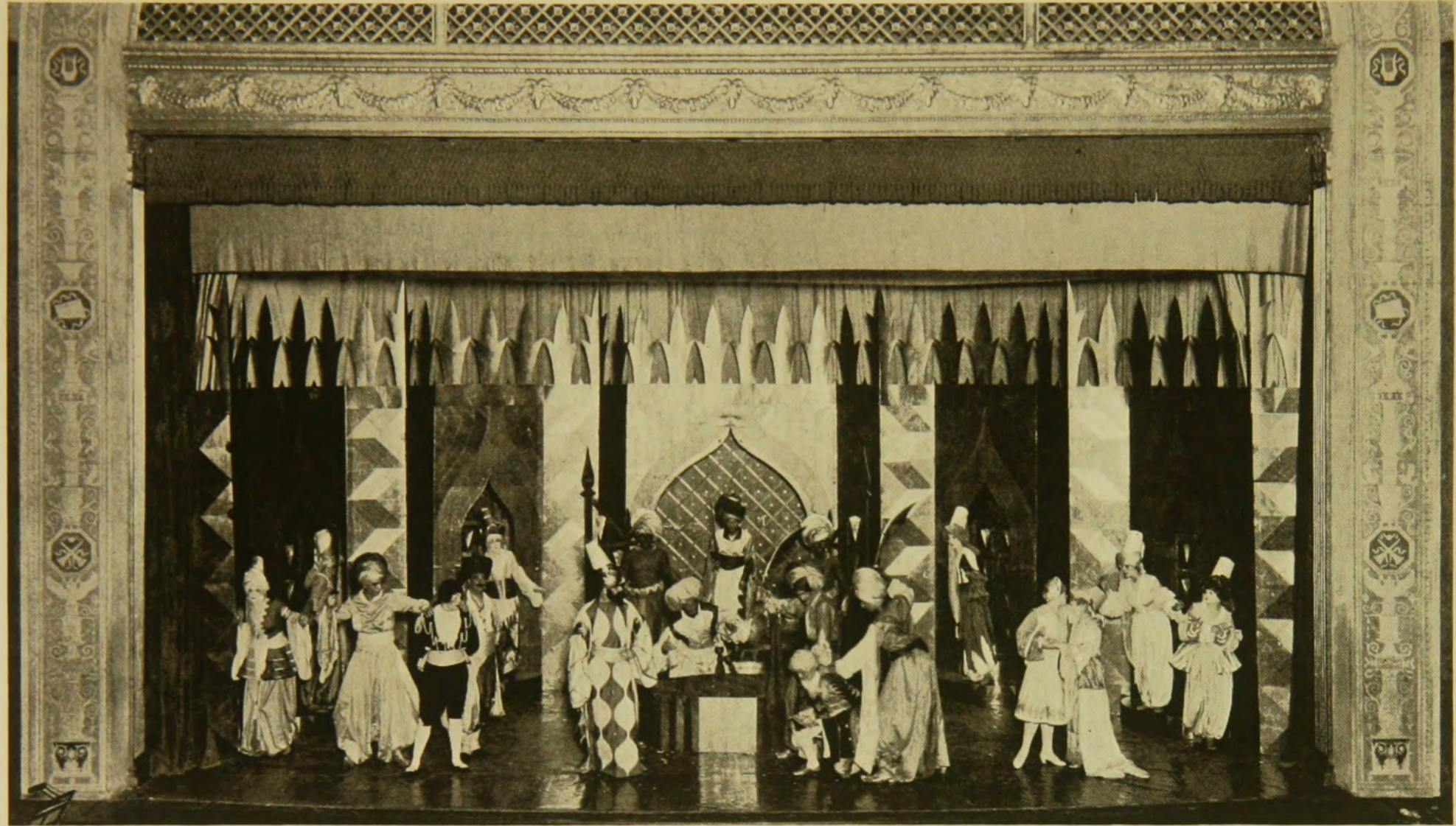
A Spiral Staircase Leading to the Mezzanine Floor.



*On the left as you face the stage are the murals painted by Ezra Winter.
Left to right: Sylvan, Martial, Lyric and Festival Music.*



*On the right as you face the stage are the murals painted by Barry Faulkner.
Left to right: Religious, Hunters', Pastoral and Dramatic Music.*

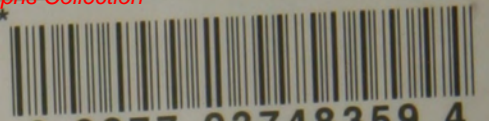


Rochester Opera Company gives first American performance in English of Mozart's "The Abduction from the Seraglio" in Kilbourn Hall. Talented students have an opportunity to win places in this organization, and to appear on the stage of the Eastman Theatre.



*Rochester Philharmonic Orchestra, Eugene Goossens, conductor.
One of the major symphony orchestras of the country.*

COPIES OF THIS BOOKLET MAY BE OBTAINED BY ADDRESSING
ARTHUR M. SEE, SECRETARY EASTMAN SCHOOL OF MUSIC, ROCHESTER, N. Y.
AND ENCLOSING FIFTEEN CENTS.



3 9077 03748359 4