



J. J. DONOGHUE & SON, of 23 Rainier Street, who installed the plumbing and heating system. The cold storage brine system was also installed by him.

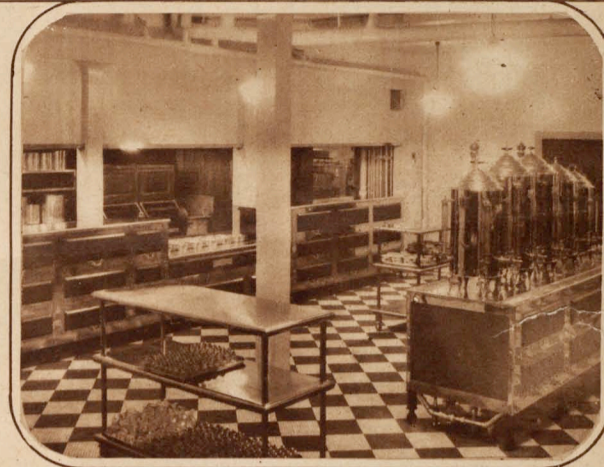


STEDMAN NATURIZED FLOOR. Made of rubber reinforced with cotton fibre laid on wood or concrete in tile or runner forms. Looks like marble. Feels like velvet. Wears like iron. Silent. M. J. TIERNEY COMPANY, District Agent, Cutler Bldg.

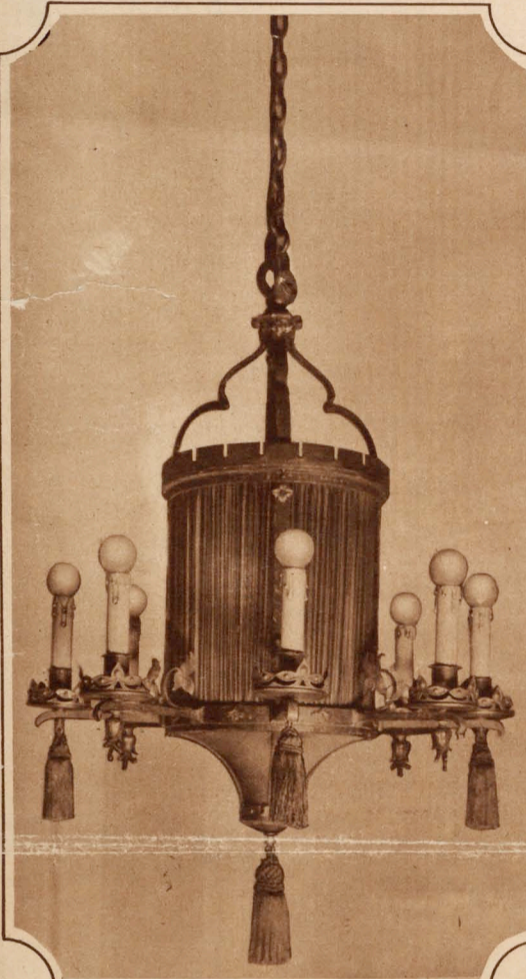


EXTERIOR VIEW, South Clinton Street entrance. Decorative effects, both interior and exterior, done by the HAYDEN CO., 320 North Goodman Street.

The Odenbach Coffee Shoppe



THIS IS THE LAST WORD in modern kitchens. Completely equipped with sanitary, speedy and labor-saving appliances. Gas ranges and equipment installed by ROCHESTER GAS & ELECTRIC COMPANY.

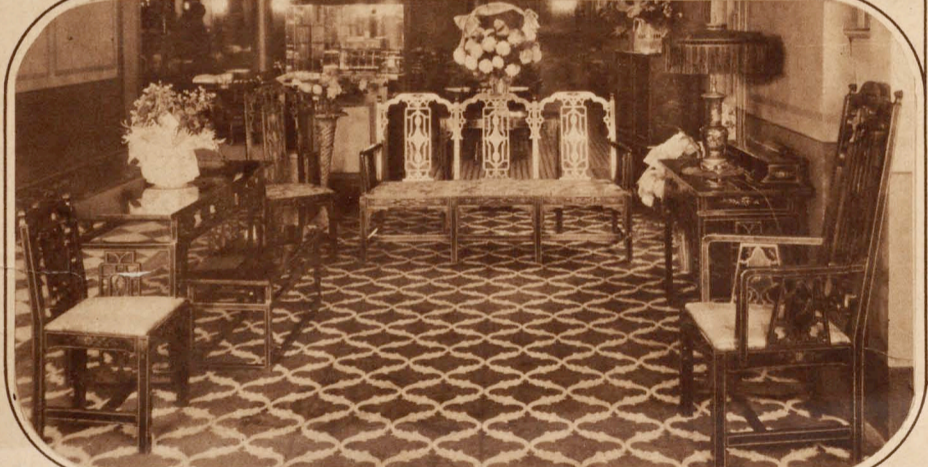


All the Fixtures in the Odenbach Coffee Shop are creations of our special designer. We Invite You to Visit Our Fixture Studio LAUBE ELECTRIC CO. "Rochester's Electrical Department Store." 338 East Main St.

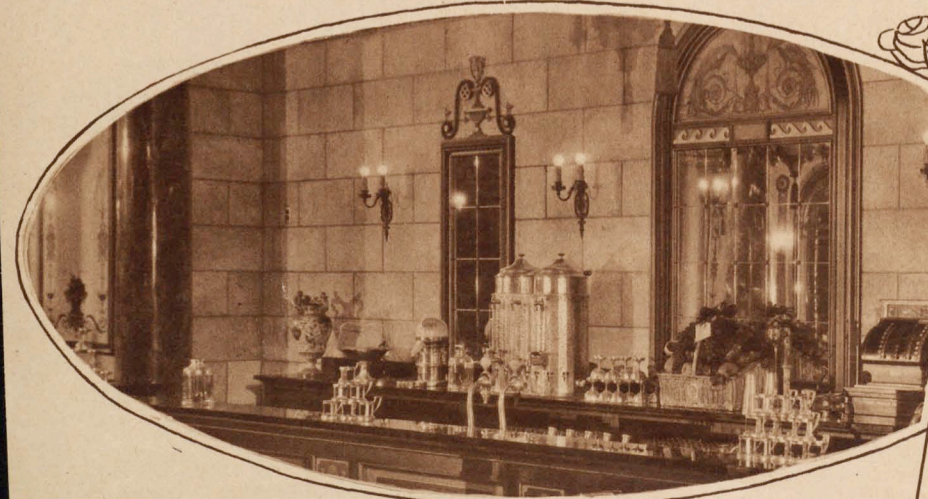


Designed and executed under the direction of William L. Phillips, associated with J. FOSTER WARNER Architect

CLOISSONNA FLOOR carried out in black and white terrazzo with brass strip insert. Laid by WHITMORE, RAUBER & VICINUS, who also installed the black and gold marble.



WAITING ROOM, MAIN STREET ENTRANCE. Furniture is of Chinese Chippendale design, finished in black lacquer with gold decoration. Carpet is a heavy Nonpareil Axminster, black colored ground with rose and taupe shade figure, an '1' is the same as the carpet specially designed and used in the Los Angeles Biltmore Hotel. This carpet has been freely and favorably commented upon in magazine articles. This room was furnished by HOWE & ROGERS CO., of Rochester.



IVORY ZENETHERM is a precast decorative wall surfacing material. Factory representatives, THE CONSTRUCTION SPECIALTIES COMPANY, 25 E. Main Street.



Construction work and interior trim by ANTHONY LINK'S SONS, Building Contractors, of 616 North Goodman Street.