

Second • Annual • Outing

OF THE

Board of Education, School Principals,

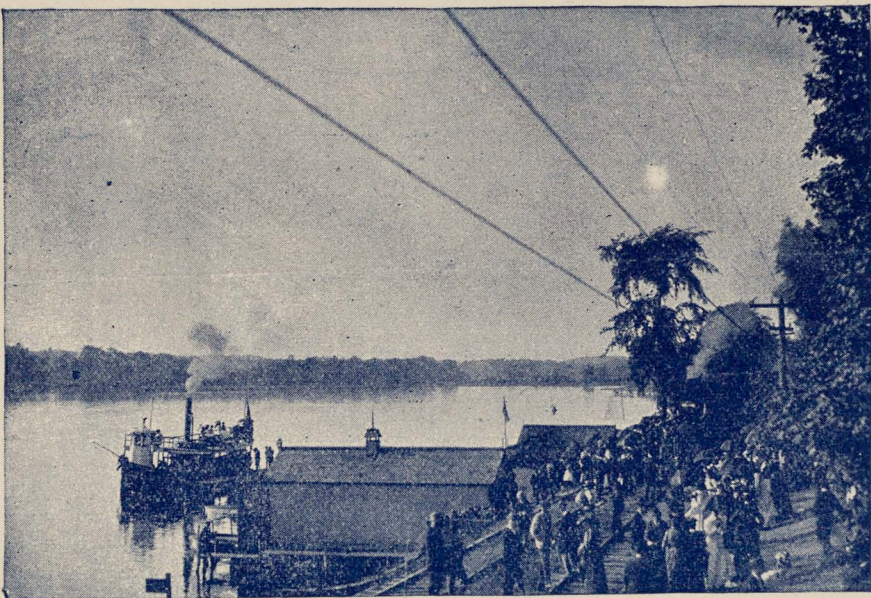


Teachers, Free Academy Pupils
and Tenth Grade Scholars . . .

AT

SILVER LAKE

Saturday, June 9, 1894.



VIA

Buffalo, Rochester & Pittsburgh Railway.

AN Early Summer's Day Pleasure Trip through the beautiful
WYOMING VALLEY
with its wealth of wondrous scenery, and passing in full view of the great Wyoming Salt Fields.

The object of this excursion is to afford the teachers and pupils of the Public Schools, and their friends, an opportunity of enjoying an outing upon this weekly holiday, at a time of year when rural nature is taking on her greatest beauties. The grounds at Silver Lake include many acres of wooded hills and valleys, where wild flowers are budding forth in great abundance, and where may be found every variety of tree and shrub known to this climate.

EVERY FACILITY FOR ENJOYMENT AT SILVER LAKE
Boating, Fishing, Picnic Groves, Swings, Pavilions, Athletic Grounds, Hotels, etc., etc.

An additional feature of this enjoyable trip will be a stop of one-half hour at the **New York State Fish Hatchery** on Spring Creek, which provides millions of fry for the waters of the state, and the process of breeding them will afford a most interesting study to excursionists.

THE FAMOUS SPRING CREEK BAND, OF MUMFORD, WILL FURNISH DELIGHTFUL MUSIC DURING THE TRIP AND AT THE LAKE DURING THE AFTERNOON.

SPECIAL FAST TRAIN will leave West Ave. Station, Rochester, at 8.30 A. M., sharp.
Returning, leave Silver Lake at 5.30 P. M.

Fare, Round Trip, Only 50 Cts.
Children under 12 years, 25 Cents.

Fill your Lunch Baskets and invite your friends to join you in a day's outing at this charming Lake Resort.

COMMITTEE OF ARRANGEMENTS.

Commissioners Williams, Warren, Decker and Beard; Principals Moulthrop of No. 26, Pierce of No. 4, Osborne of No. 15, Cook of No. 3, Miss Shelton of No. 18, Miss Jenkins of No. 22, Miss Curtice of No. 20, and Miss Reichenbach of No. 19 school.

For further information, consult members of the Committee, or
A. F. RAVERET, Excursion Agent,
B. R. & P. DEPOT, Cor. West Ave. and Ford St.

J. H. BARRETT, General Superintendent. **R. G. MATHEWS,** Division Superintendent. **EDWARD C. LAPEY,** Gen'l Passenger Agent