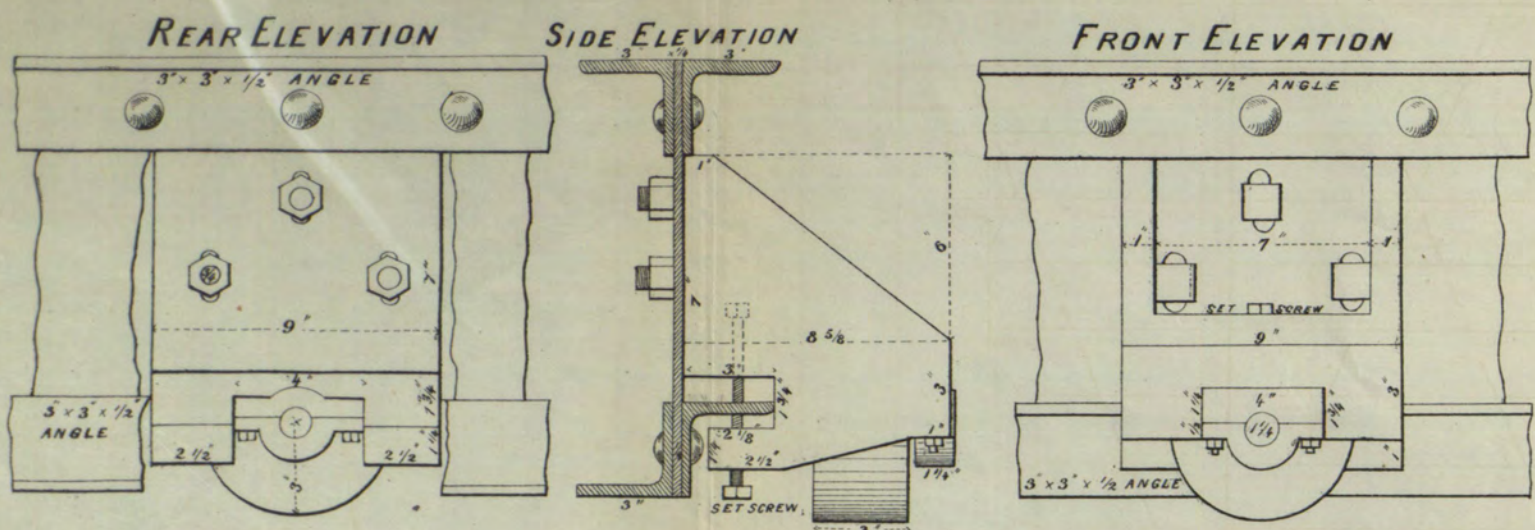


Friction Wheels at ends of Bridge



Scale 6 inches to one inch.

# PLAN of SWING BRIDGE over ERIE CANAL on EXCHANGE STREET

DANIEL RICHMOND  
Division Engineer.

CITY OF ROCHESTER.

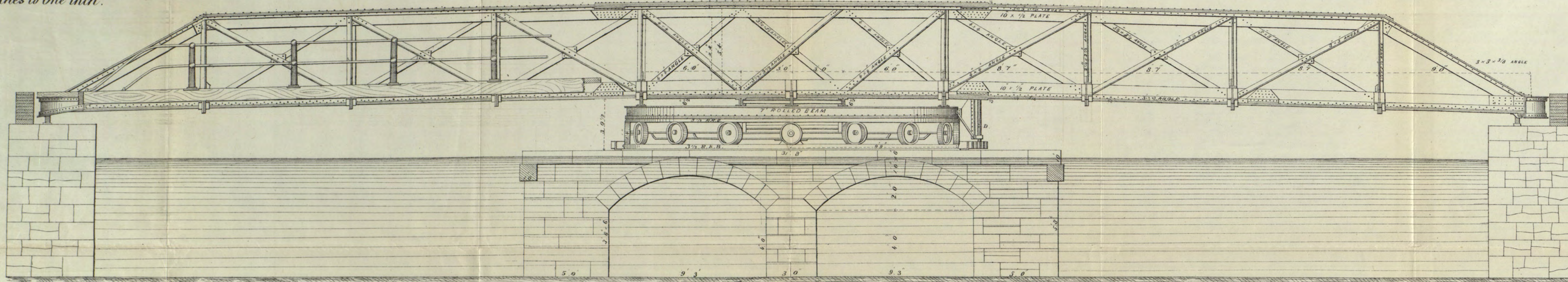
J. NELSON TUBBS  
Resident Engineer.

J. BISGOOD, DEL.

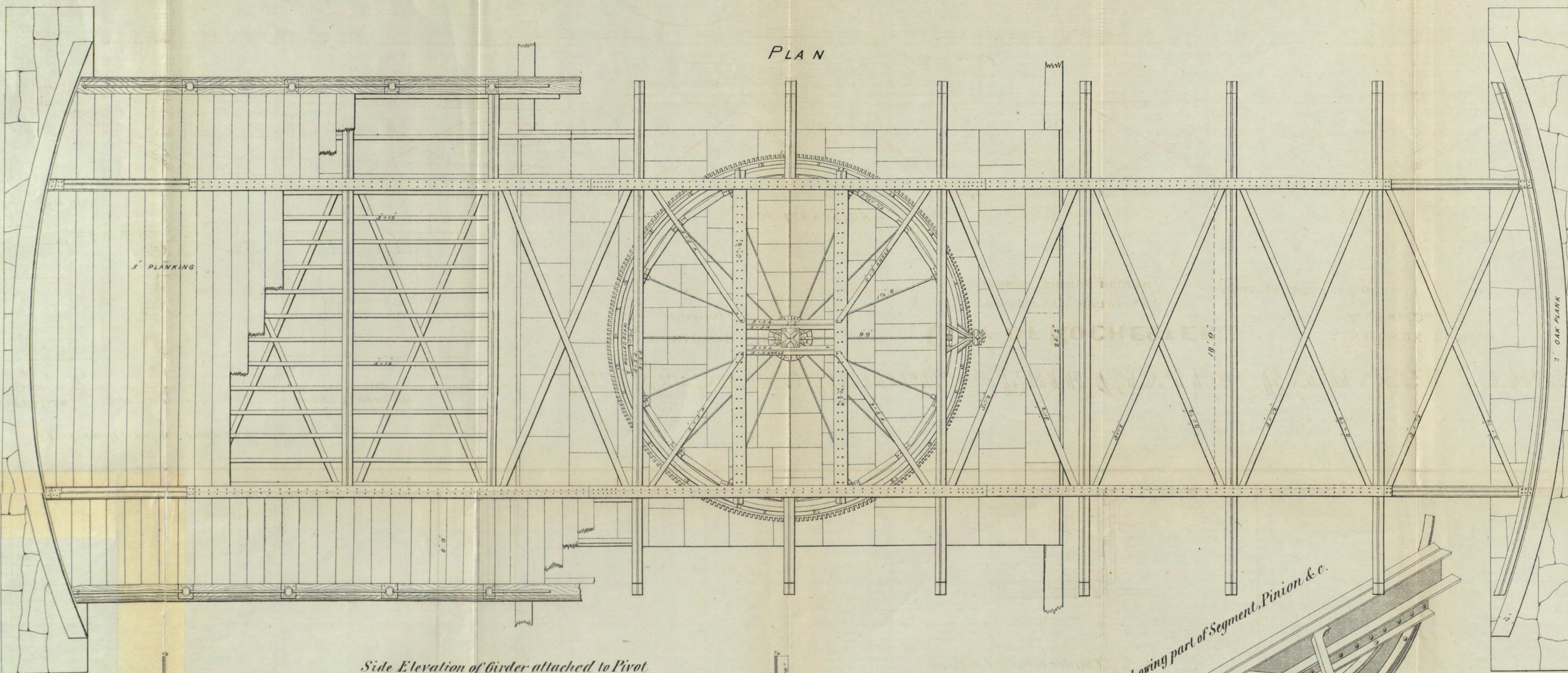
DESIGNED BY C. HILTON, C.E.  
THOMAS LEIGHTON, BUILDER.

SCALE 1/4 INCH TO ONE FOOT.

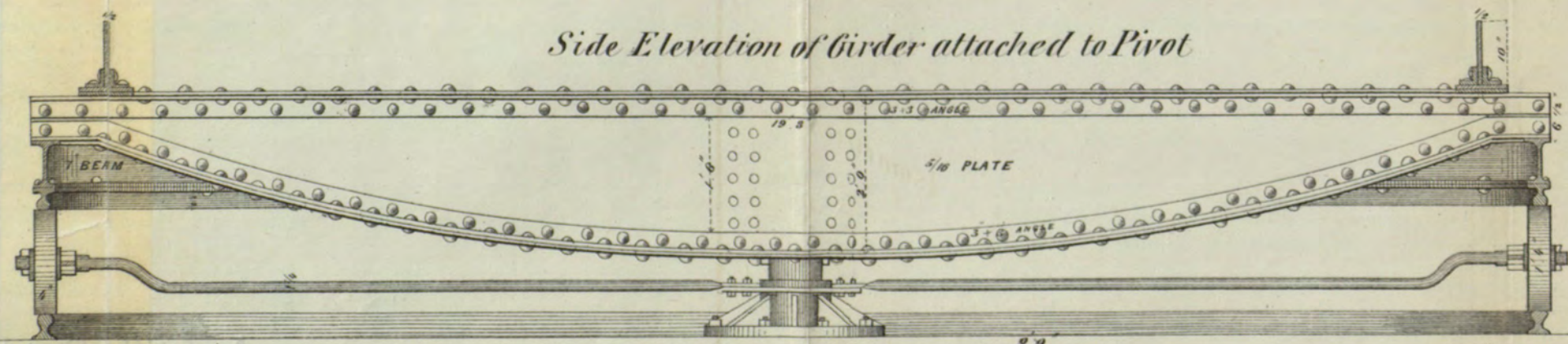
SIDE ELEVATION



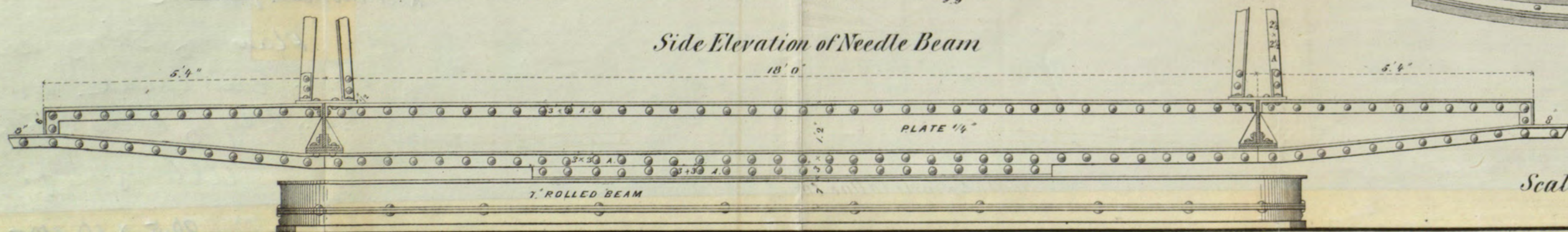
PLAN



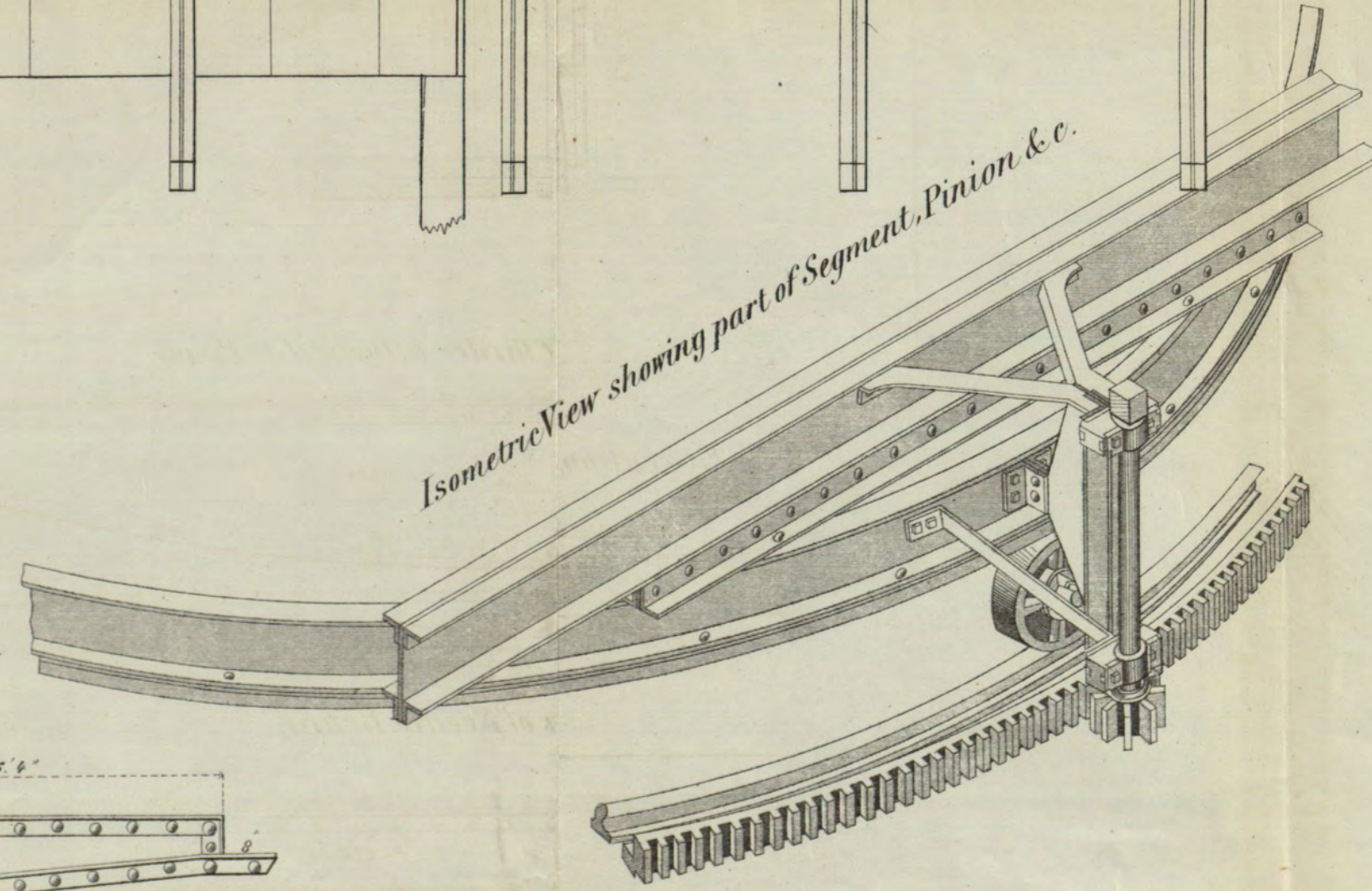
Side Elevation of Girder attached to Pivot



Side Elevation of Needle Beam

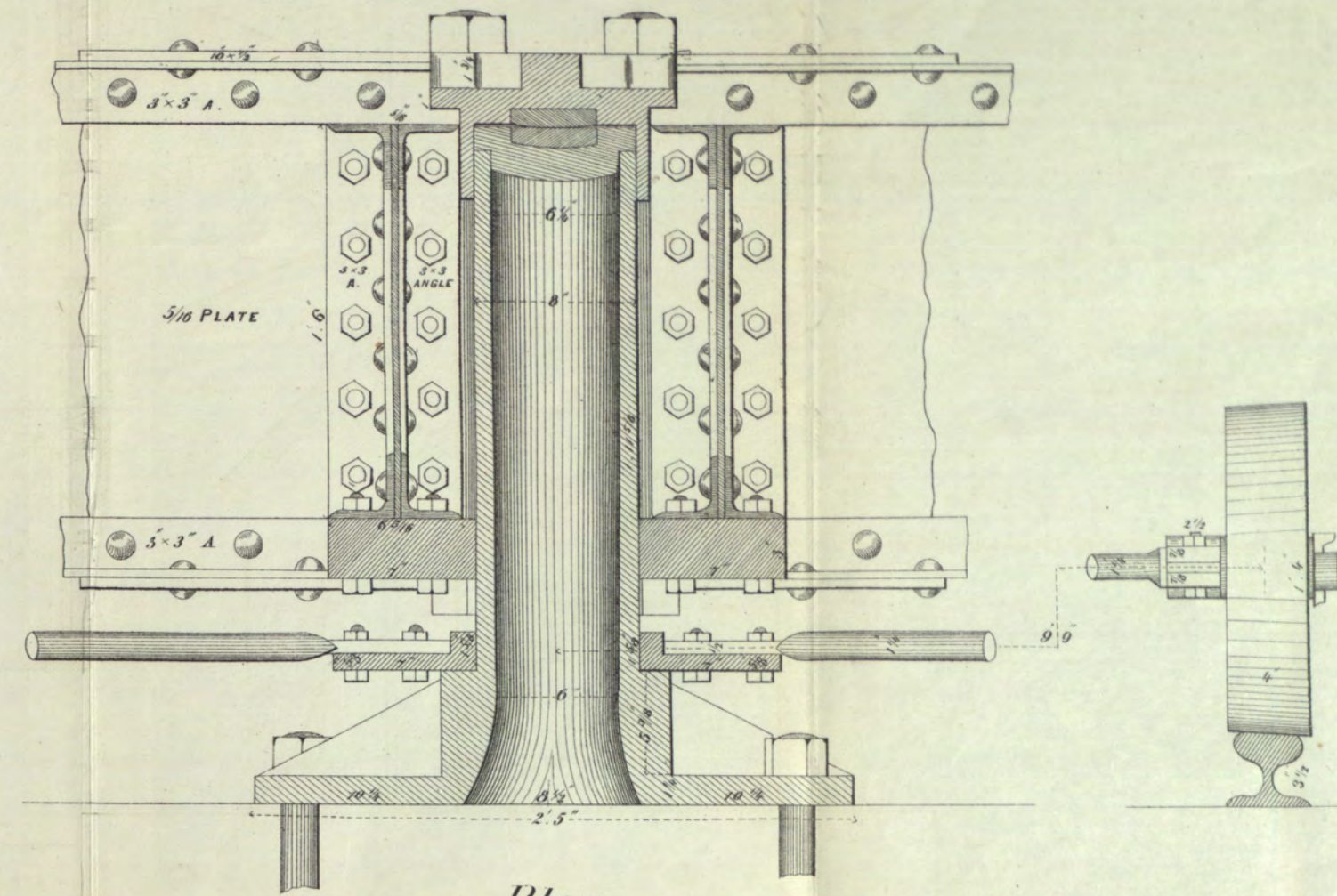


Isometric View showing part of Segment, Pinion &c.

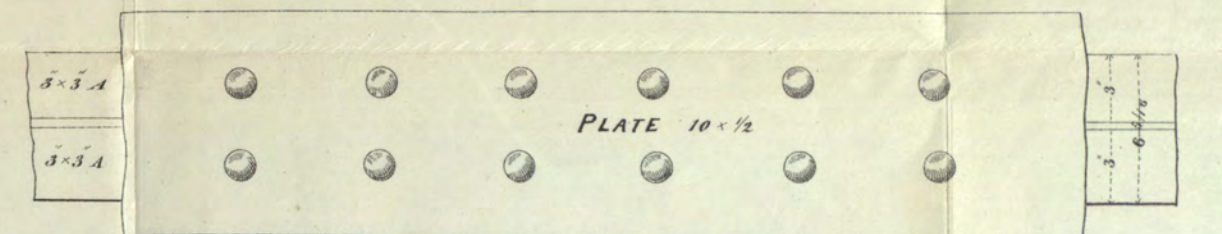


Scale 1/2 inch to one foot.

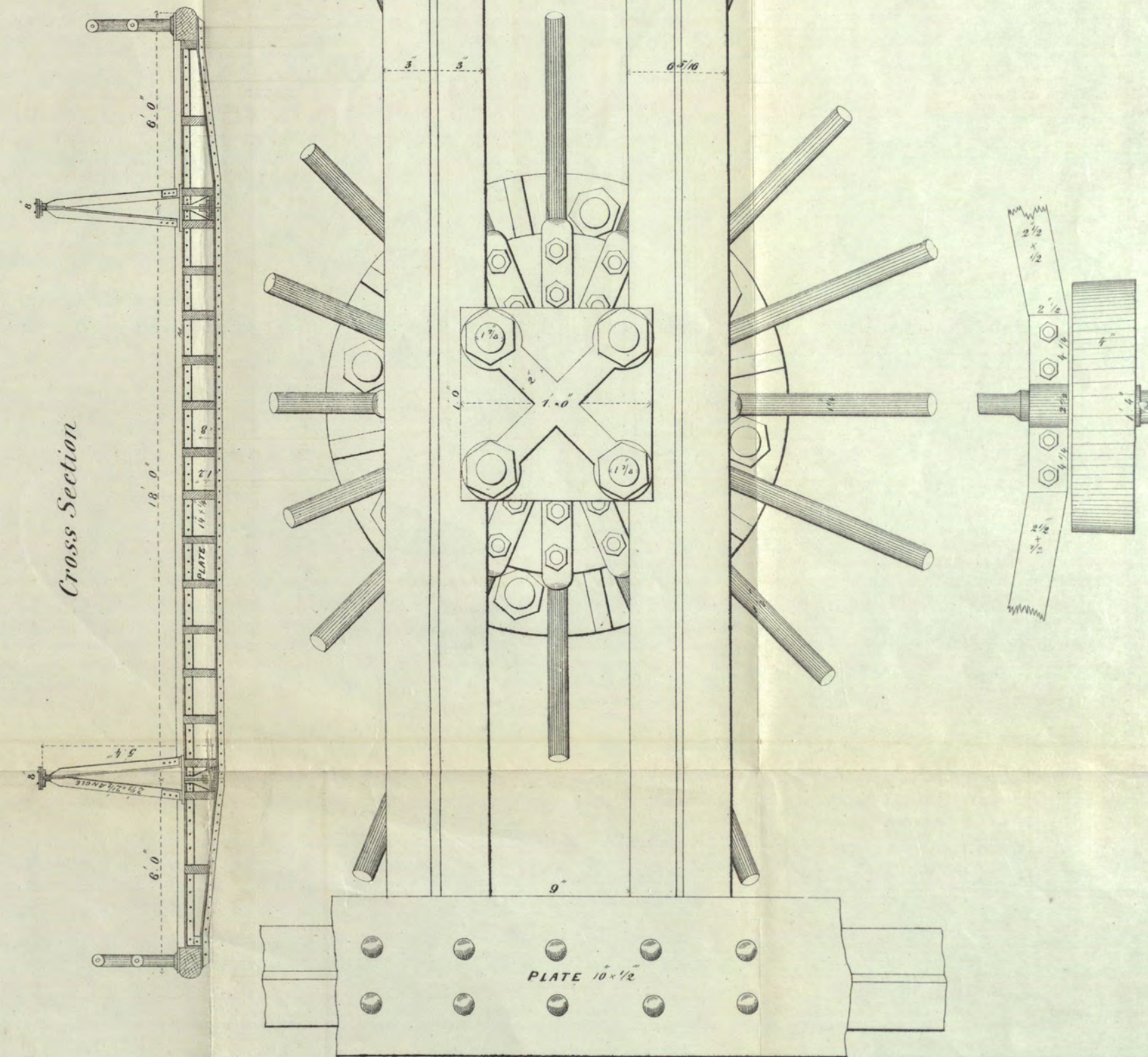
Section of Pivot



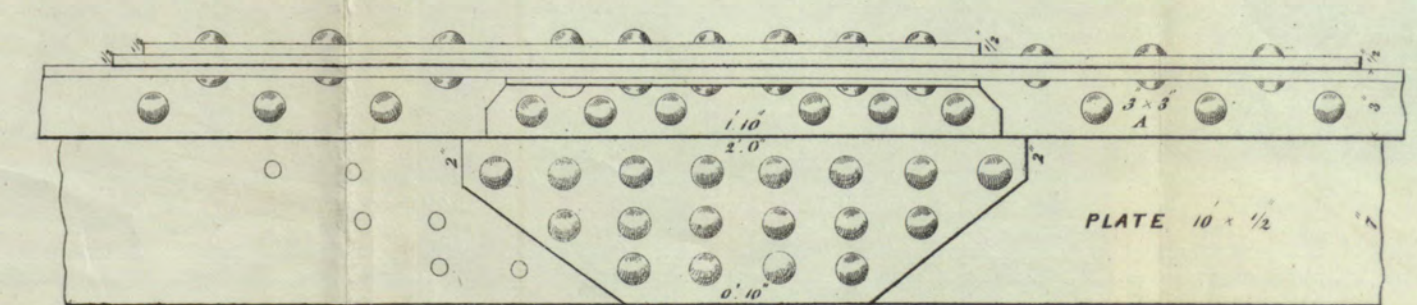
Plan



Cross Section



Side Elevation of part of top chord showing connecting plate



Section



Scale 6 inches to one inch.