
ROCHESTER DIRECTORY

REFERENCE DEPARTMENT

Where more information than is possible to give under the classified listings is placed on file for buyers reference. The value of this department is inestimable. It is an index of the best business interests of the city, and stands for them and the city in reference libraries all over the country, as well as on the desks of progressive business men. It is accessible to everybody, and the logical place to look for specific information.

MAIN 3441

MAIN 3442

MONROE ABSTRACT CORPORATION

FIVE SOUTH FITZHUGH ST., ROCHESTER, N. Y.

Abstracts of Title

Title Insurance Policies

Federal Court Searches

Titles Insured Through New York Title Insurance Company

FOUNDED IN 1886

ABSTRACT TITLE & MORTGAGE CORPORATION

ABSTRACTS OF TITLE

TITLE INSURANCE

FEDERAL COURT SEARCHES

GUARANTEED TAX SEARCHES

MORTGAGE SERVICING

47 SOUTH FITZHUGH ST.

Tel. Main 4170

ROCHESTER

STEWART, HANFORD & FROHMAN Inc.
FOUNDED 1906
Advertising
11 James St. Rochester
110 EAST 42nd STREET NEW YORK CITY

INTERNATIONAL PRESS SERVICE, INC.

Advertising Engineers

NEWS and FEATURE SYNDICATING

Complete Advertising Service

725 COMMERCE BUILDING

Telephone Main 7705

Branch Office, 480 S. Clinton Avenue

BURR & STARKWEATHER COMPANY

Farm, Dairy, Poultry and Contractors' Supplies
Fertilizers and Seeds — Farm and Garden Tractors

BINDER TWINE, POWER AND HAND LAWN MOWERS

Dexter Washing Machines - - Beacon Poultry Feeds

Distributors of PROTANE GAS for Gasless Homes

Magic Chef, Glenwood Ranges

PHONE: STONE 3016-3017

39-57 MT. HOPE AVENUE

ROCHESTER, N. Y.

Automatic Heating and Air Conditioning

economically more efficiently

A complete and flexible line of G-E Automatic Heating (Oil & Gas) Air Conditioning (Winter, Summer or year 'round) equipment. Also a full line of Room Coolers and Air Circulators. We have units for every home or business need. Call us and we will be happy to give you full information.

PHONE MAIN 272



QUINBY

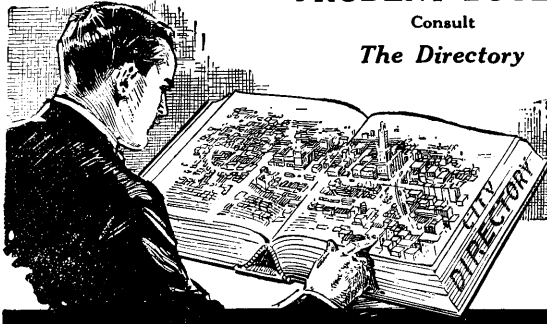
AIR CONDITIONING CORPORATION

618 E. MAIN STREET

PRUDENT BUYERS

Consult

The Directory



SAMPSON & MURDOCK CO., Inc.

179 LINCOLN STREET

BOSTON, MASS.

ALLING & MILES, INC.

Distributors of

**HUDSON and TERRAPLANE
MOTOR CARS**

Office and Showroom, 82 STONE ST. - Phone STONE 2537

COOL CHEVROLET CORP.

for Economical Transportation

*Passenger
Cars*



*Delivery
Trucks*

Always a fine stock of GUARANTEED USED CARS.
A modern SERVICE DEPT—FLAT RATE CHARGES.
SKILLED MECHANICS and FACTORY EQUIPMENT
is your SERVICE GUARANTEE

340-360 CULVER ROAD

..

Phone MONROE 2340

ROCHESTER MOTORS, Inc.

Distributors



STUDEBAKER MOTORS CARS

Sales and Service

77-87 MONROE AVENUE

ROCHESTER, NEW YORK

Telephone STONE 3030

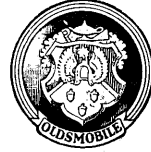
SUPPLY HOUSES of many kinds
are listed in this book. A
careful study of its possibili-
ties will be of benefit to you

FINCHER MOTORS, INC.

Distributors

OLDSMOBILE
MOTOR CARS

Salesroom and Service Station



14-28 SOUTH UNION STREET

Phone MAIN 2262

E. J. HORTON, Inc.

Distributors for

Dodge Brothers Cars and Trucks
and
Plymouth Cars

Service That Serves and Saves

Used Cars and Trucks—Greater Values—Lower Prices

1044 UNIVERSITY AVENUE

Telephone Monroe 612-613-614-615

Packard

SALES
and
SERVICE

Packard

Guaranteed Used Cars

BANCROFT MOTORS

33 STILLSON STREET

MAIN 6562

Hudson Terraplane

... match
Packard 120
against the
field!

ASK THE
MAN WHO
OWNS ONE

THE VALLEY CADILLAC CORPORATION

Cadillac

LaSalle

Pontiac

G. M. C. Trucks

GUARANTEED USED CARS AND TRUCKS

Salesrooms and Complete Service Facilities

333 EAST AVENUE

-

-

STONE 320

THOMAS J. NORTHWAY, INC.

DISTRIBUTORS FOR

DeSoto and Plymouth Motor Cars

Special Factory Equipment Plus Forty
Years Experience will assure you of a satis-
factory job and it will be priced in keeping
with the times.

100 EXCHANGE STREET - - Phone MAIN 7091

WHITING-BUICK, Inc.*"Dealer Since 1906"**Buick Sales
Service**Used Cars*

352 EAST AVENUE - - -

STONE 714

CLARK-PRINCETON COMPANY*Trailers*

PLEASURE

and

BUSINESS

Automobiles

DISTRIBUTORS

YORK CRUISERS

FLEETWHEELS-COATES

U. S. CLUB CARS

Trailers of Distinction at Surprisingly Low Prices

OFFICE and SHOWROOM

30 SAGER DRIVE

Monroe 3276

OUTDOOR DISPLAY

1743 EAST AVENUE

ROCHESTER, N. Y.

THINK how many other people besides
yourself read these advertisements.
Every hour of the day the Directory is
consulted.

Automobiles, Painting, Repairs, Supplies, Trimmings 71

"SISCO" SERVICE

PHONES, STONE 4045-4046

C. L. HARTMANN CORP.

Formerly Starter & Ignition Service Co., Inc.
18-20 N. UNION STREET

Satisfactory Automobile Electric and Radiator Repairs

DELCO BATTERIES

OFFICIAL SALES AND SERVICE STATIONS

Eisemann Magnetos
Electric Auto Lite
Lovejoy & Monroe Shock Absorbers

Delco, Remy & Klaxon
United Motors Service

Bosch Magnetos
Packard Cable
Carburetors All Makes

Exide

BATTERIES

Telephone

GENESEE

3476

No matter what the driving conditions may be, or where you are, you can always depend on an *Exide*. Greater cranking ability than required by the Society of Automotive Engineers is additional assurance that "*When it's an Exide you start.*"

WHEN IT'S AN



CO. INC. 1938 BY THE
ELECTRIC STORAGE BATTERY CO.

THE ELECTRIC STORAGE BATTERY CO.

Rochester Branch - - - 642 PLYMOUTH AVENUE., SOUTH

CALEY & NASH, Inc.

AUTOMOBILE PAINTING AND TRIMMING

BODIES OF SPECIAL DESIGNS

Manufacturers of

VANS AND TRUCK BODIES

1828 EAST AVENUE - - - Phone Monroe 5126

THE SCHLEGEL MFG. CO.

Manufacturers of

AUTOMOBILE, CARRIAGE, CASKET AND DRESS
TRIMMINGS

ALSO TEXTILE APPLIANCES FOR MECHANICAL PURPOSES

277 North Goodman Street, Cor. College Ave., Rochester, N. Y.

PHONES, MONROE 812, 813

Central Trust Company

ROCHESTER, N. Y.



Main Office
25 Main Street, East

Brighton Branch
1806 East Avenue

Office Hours: from 9 A.M. to 3 P.M.

Saturdays: Close at 12 M.

Officers:

JOHN A. MURRAY	President
WILSON HAMILTON	Vice-President
JOHN H. RAUSCH	Asst. Vice-President
F. DWIGHT SAGE	Asst. Vice-President
RICHARD C. MEISENZAHL	Secretary
HOMER D. KLUMPP	Treasurer
FRANCIS P. BEATTIE	Asst. Secretary
EDMUND J. MEYER	Auditor

Trust Department

D. R. CHAMBERLAIN	Vice-President and Associate Trust Officer
THOMAS J. SERCU	Vice-President and Trust Officer
E. M. VOGEL	Asst. Trust Officer

Directors:

ESTEN A. FLETCHER	JOHN A. MURRAY	GEORGE S. VAN SCHAICK
EZRA A. HALE	THOMAS N. NAGLE	ALBERT E. VOGT
WILSON HAMILTON	JOHN D. PIKE	LOUIS A. WEHLE
FRANTZ HAVERSTICK	FRANK J. SMITH	DWIGHT S. WETMORE
MORTIMER R. MILLER		OLIVER B. WOODFILL

Foreign Drafts Issued on all parts of the world. Letters of Credit and Travelers' Checks available for Foreign Travel. Interest Allowed on Special Deposits. Acts as Executor of Wills, Administrator of Estates, Trustee under corporate and individual trust agreements.

We invite the Accounts of Corporations, Firms and Individuals, and we are prepared to furnish such depositors with business facilities consistent with their balances and standing.

Member Federal Deposit Insurance Corporation

Safe Deposit Boxes for Rent from \$3.00 per year up
 MAIN OFFICE OR BRIGHTON BRANCH

NIGHT DEPOSITORY, MAIN OFFICE, 25 MAIN ST. EAST

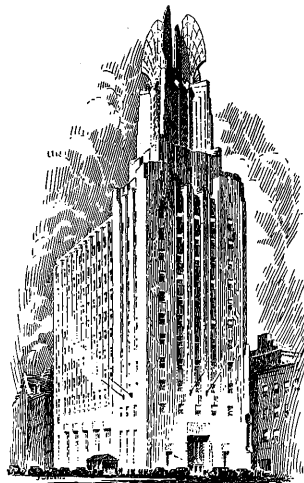
Genesee Valley Trust Company

EXCHANGE and BROAD STS.

Free Parking for Customers at 101 Exchange Street

OFFICERS

W. DEWEY CRITTENDEN, *Chairman of the Board*
 ALEXANDER T. SIMPSON..... President
 FRANK S. THOMAS..... Executive Vice-President
 GEORGE E. VARCOE..... Vice-President
 JOHN W. JARDINE..... Vice-President
 JOHN P. DAY . . Vice-Pres. & Associate Trust Officer
 W. W. STEELE..... Asst. Vice-President
 HOWARD W. MATTHEWS..... Treasurer
 JOSEPH P. COLLINS..... Trust Officer
 T. CHESTER MEISCH..... Secretary
 NORBERT D. GREENE..... Asst. Secretary
 ROBERT C. TAIT..... Asst. Trust Officer



BOARD OF DIRECTORS

WHEELER D. ALLEN
 Vice-Pres. C. P. Ford Co., Inc.
 LEON L. BENHAM,
 President Richardson Corporation
 KENDALL B. CASTLE, Attorney
 Trustee, University of Rochester
 GEORGE B. CAUDLE, President Kelso Laundry
 Director, American Laundry Machinery Co.
 BRACKETT H. CLARK
 Secretary, Cochrane-Bly Company
 GEORGE H. CLARK,
 Trustee, Security Trust
 Director, Eastman Kodak Co.
 Treasurer, Mechanics Institute
 W. DEWEY CRITTENDEN, Chairman of The Board
 President and Treas., F. & C. Crittenden Co
 Chairman of Board, Brewster-Crittenden & Co.
 EDWARD J. DOYLE,
 President, Doyle Gasoline and Oil Co., Inc.
 ALBERT V. DURAND
 President Smith-Gormly Co., Inc.
 WILLIAM B. HALE,
 Chairman of Board, Mechanics Savings Bank
 Chairman of Board, Lawyers' Co-operative Publishing Co.
 Trustee, University of Rochester

CARL S. HALLAUER
 Vice-Pres., Bausch & Lomb Optical Co.
 Pres., Bausch & Lomb Optical Co., Ltd., Canada
 WALTER L. HEUGHES
 Pres. F. L. Heughes & Co. Inc.
 THOMAS J. NORTHWAY,
 President, Thomas J. Northway, Inc.
 ALEXANDER T. SIMPSON,
 President
 FRANK S. THOMAS
 Executive Vice-President
 KENNETH C. TOWNSON,
 Director Sterner Lithograph Co.
 Director, Sibley, Lindsay & Curr Co.
 LEWIS S. WEST,
 Vice-Pres. and Gen. Mgr. Merchants Despatch
 Transportation Co.
 ERNEST C. WHITBECK,
 Attorney
 HENRY T. WILLIAMS,
 Physician
 Pres. Rochester & Genesee Valley Railroad
 GEORGE M. WOOD,
 President, Lawyers Co-operative Publishing Company

TRUST DEPARTMENT SERVICES

In appointing the Genesee Valley Trust Company as your Executor, Trustee or to act in any other fiduciary capacity you are assured of qualifications impossible of attainment by an individual acting in the same capacity.

It has facilities to handle, with speed and accuracy, the many details demanded in this work without delay or loss to interested parties.

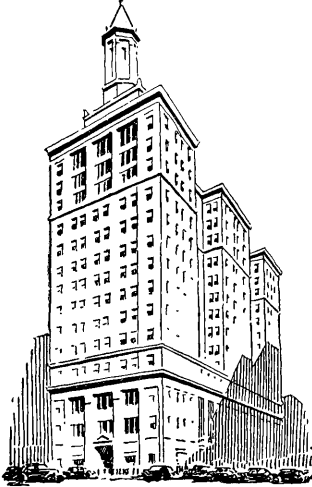
We invite you to consult our Officers, which may be done in complete confidence, without the slightest obligation.

SAFE DEPOSIT BOXES IN FIRE AND BURGLAR PROOF VAULTS

Member Federal Deposit Insurance Corporation

**LINCOLN-ALLIANCE
BANK AND TRUST COMPANY**

Main Office, 183 MAIN ST. E.



- Lincoln Office, 33 Exchange Street
- Lake Ave. Office, 1495 Lake Avenue
- West End Office, 886 Main Street W.
- East End Office, 460 N. Goodman Street
- Monroe Ave. Office, 560 Monroe Avenue
- Portland-Clifford Office, 520 Portland Avenue
- Newark Office, Newark, N. Y.
- Brockport Office, Brockport, N. Y.

EVERY BANKING SERVICE

Checking Accounts, Interest Accounts, Trust Services, Business Loans, Personal Loans, Safe Deposit Boxes, Travelers Checks, Foreign Drafts, Etc.

OFFICERS

RAYMOND N. BALL, *President*

RAYMOND F. LEINEN, *Executive Vice Pres.*

EDMUND J. TUETY, *Secretary*

ASSISTANT VICE PRESIDENTS

Clarence E. Higgins

Franklin S. Meinhart

George C. Lennox

G. Alfred Sproat

Richard A. Sweeney

VICE PRESIDENTS

Thomas R. Baker

John W. Remington

David C. Barry

William G. Watson

Thomas R. Dwyer

Edward M. Weingartner

Swayne P. Goodenough

Raymond J. White

Arthur J. Meisenzahl

Frederick D. Whitney

ASSISTANT SECRETARIES

Lyle G. Antis

Cyril G. Kress

Ogden Butler

Robert E. Macon

Roy B. Combs

Clarence E. Marsh

Lincoln Doumaux

Luke T. Smith

Clarence S. Greene

William B. Vaisey

William Groh

Arthur B. Weston

AUDITING DEPARTMENT, Roy E. Miller, *Auditor*

TRUST DEPARTMENT

John W. Remington, *Vice Pres. and Trust Officer*

Raymond H. Schlegel, *Asst. Trust Officer*

William A. Rose, *Asst. Trust Officer*

Robert E. Towey, *Asst. Trust Officer*

DIRECTORS

MORTIMER ADLER

MARION B. FOLSOM

JOSEPH T. ALLING

FRANK E. GANNETT

RAYMOND N. BALL

JAMES E. GLEASON

EDWARD BAUSCH

FRED C. GOODWIN

JOHN P. BOYLAN

FRED H. GORDON

JAMES C. DRYER

EDWARD A. HALBLEIB

ALBERT B. EASTWOOD

THOMAS J. HARGRAVE

BERNARD E. FINUCANE

SOL HEUMANN

ALBERT A. HOPEMAN

EDWARD G. MINER

JOSEPH M. NEISNER

RUSH RHEES

HERMAN RUSSELL

ALBERT F. SULZER

RAYMOND L. THOMPSON

DOUGLAS C. TOWNSON

HERBERT J. WINN

Member Federal Deposit Insurance Corporation

Member Federal Reserve System

ROCHESTER TRUST
and Safe Deposit
COMPANY
Main Street West and Exchange

Capital
\$1,000,000



Surplus
\$3,000,000

Fifty Years Experience

Complete Banking and Trust Service for Individuals and Corporations—
 Commercial, Collateral and Mortgage Loans—Securities Information—
 —All Trust Functions—Safe Deposit Boxes and Storage Vaults.

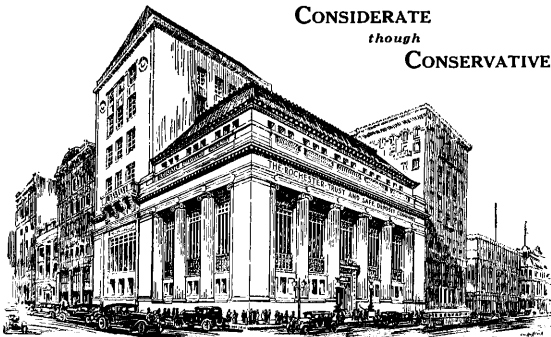
OFFICERS

ROBERT C. WATSON President	WILLARD I. LUESCHER Asst. Vice Pres.
JOHN CRAIG POWERS Vice Pres. & Chairman Ex. Com.	HARRY L. EDGERTON Asst. Secretary
EDWARD BAUSCH Vice President	JOSEPH B. HOYT Asst. Secretary Mgr. Securities Dept.
GEORGE H. HAWKS Vice Pres. and Sec.	HARRY W. SAGE Asst. Secretary
LEIGH H. PIERSON Trust Officer	FAY E. WRIGHT Asst. Trust Officer
EDWARD L. WILLIAMS Treasurer	ALBERT D. STEWART, JR. Asst. Trust Officer
ALFRED J. LEGGETT Asst. Vice Pres.	EDWARD HARRIS, 2ND Asst. Trust Officer

DIRECTORS

ROBERT C. WATSON	HERBERT J. WINN
EDWARD G. MINER	FREDERICK S. MILLER
R. ANDREW HAMILTON	SAMUEL E. DURAND
FRANK T. SAGE	WILLIAM F. STRANG
GEORGE H. HAWKS	VINCENT S. BENNETT
JOHN CRAIG POWERS	OSCAR H. PIEPER
EDWARD BAUSCH	THEODORE C. BRIGGS
JOSEPH MICHAELS	RICHARD M. HARRIS

CONSIDERATE
though
CONSERVATIVE



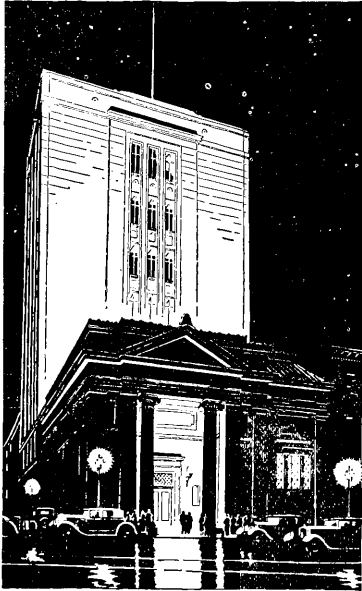
MAIN STREET WEST AND EXCHANGE

ROCHESTER'S FIRST TRUST COMPANY — Operating under Perpetual Charter

MEMBERS FEDERAL DEPOSIT INSURANCE CORPORATION

SECURITY TRUST COMPANY

OF ROCHESTER



Main Street, East
and
Water Street, South

OFFICERS

- JAMES S. WATSON President
- CARL S. POTTER Vice-President
- EDWARD HARRIS Vice-President
- JESSE W. LINDSAY Vice-President
- WILLIAM H. STACKEL, Vice-Pres & Trust Officer
- GEORGE F. STONE Secretary
- EARL G. HOCH Treasurer
- HARVEY W. MILLER Ass't Secretary
- DAVID GALES Ass't Secretary
- FREDERICK J. BENDON Asst. Treasurer
- SCHUYLER C. WELLS, JR. Vice Trust Officer
- GRACE E. HOWIE Ass't Trust Officer
- SEWARD H. CASE Ass't Trust Officer
- BENJAMIN E. LULL Ass't Trust Officer
- EVA M. SCHREINER Ass't Trust Officer
- KENATH C. WILD - Mortgage Realty Officer

DIRECTORS

- JAMES S WATSON
- RUFUS K. DRYER
- CARL F. LOMB
- MORLEY A. STERN
- DANIEL M. BEACH

- F. HARPER SIBLEY
- FRANK W. LOVEJOY
- THOMAS G. SPENCER
- HERBERT EISENHART
- CARL S. POTTER

- WALTER L. TODD
- GEORGE H. CLARK
- WESLEY M. ANGLE
- BERNARD E. FINUCANE
- ARTHUR F. REED

INTEREST PAID ON DEPOSITS. Special attention given to handling Estates and Trusts. Money to Loan on Approved Securities. Designated by Superintendent of Banking Department as Depository for Reserve Funds of State Banks. Checks on Foreign Cities, Letters of Credit and Travelers Checks issued.

SAFE DEPOSIT VAULTS FOR RENT in our Electrically Protected Burglar-Proof Vault. Valuables in Trunks or Packages cared for. Moderate charges.

Member Federal Deposit Insurance Corporation

UNION TRUST COMPANY

OF ROCHESTER

19 MAIN ST., WEST - ROCHESTER, NEW YORK

A Marine Midland Bank

Member Federal Deposit Insurance Corporation

Every Banking Service

OFFICERS

President

WILLIAM W. FOSTER

Assistant Trust Officers

ARTHUR S. CARRUTHERS

also Trust Investment Officer

R. REED GEORGE

LOUISE A. SCHOFIELD

INVESTMENT DEPARTMENT

Assistant Vice-President

CHARLES J. GRATE

FOREIGN DEPARTMENT

Manager

GORDON F. WOOD

MERCHANTS-EAST AVENUE OFFICE

Vice-Presidents

ALBERT S. NEWELL

CHESTER J. SMITH

Assistant Vice-Presidents

GROVER C. BRADSTREET

CHARLES BROUMOWSKY

Assistant Secretary

JOHN W. DWYER

OTHER CITY OFFICES

CLIFFORD-JOSEPH OFFICE

Assistant Vice-President

A. JOSEPH LONDON

CHARLOTTE OFFICE

Manager

GUSTAVE MICHAELS

NORTH-HUDSON OFFICE

Manager

CHARLES H. CLOSEN

LYELL-SARATOGA OFFICE

Manager

LOUIS M. BOLT

CULVER OFFICE

Assistant Secretary

AVERY S. GILBERT

CHILI-THURSTON OFFICE

Manager

HARRY N. FREY

DEWEY-DRIVING PARK OFFICE

Manager

CHARLES C. DUNPHREY

OUT OF TOWN OFFICES

AVON OFFICE

Assistant Vice-President

O. KENNETH COOPER

SODUS OFFICE

Assistant Vice-President

FRANK H. HELMBOLD

WEBSTER OFFICE

Assistant Vice-President

ARTHUR F. KURTZ

PALMYRA OFFICE

Assistant Vice-President

CLIFFORD G. ADAMS

MAIN OFFICE

Vice-Presidents

EDWARD J. MEYER, Comptroller

ELMER B. MILLIMAN

DELOSS M. ROSE, Secretary

BENJAMIN F. SAWIN

CARL R. SNIDER

Treasurer

CHARLES H. ESHELMAN

Assistant Vice-Presidents

JAMES A. CAMERON

ROBERT K. FAULKNER

JOHN W. MALENEY

EDWARD R. MURPHY

HUBERT L. STEVENSON

HERMON L. UNDERHILL

Auditor

HENRY P. SCHLENKER

Assistant Secretaries

HECTOR M. HARMON

ALFRED F. JANUS

LEWIS H. MORGAN

WILLIAM J. VOLZ

Assistant Auditor

F. ARTHUR ABEL

TRUST DEPARTMENT

Vice-President and Trust Officer

NELSON E. LENGEMAN

GEORGE E. BECKER

President, Marine Midland Group, Inc.

SELDEN S. BROWN

Attorney

J. ALLEN FARLEY

*Treas. E. F. Reed & Co.
Trustee Monroe County Savings Bank*

WILLIAM W. FOSTER

*President
Union Trust Company of Rochester*

JAMES F. HAMILTON

President, Morris Plan Industrial Bank

KENNETH B. KEATING

*Attorney
Harris, Beach, Folger, Bacon & Keating*

DIRECTORS

JOHN L. KEENAN

Franklin Institute

CLARENCE S. LUNT

C. S. Lunt & Co.

J. E. MCKELVEY

Director, Richardson Corp.

GILBERT E. MOSHER

Pres. The Haloid Co.

CHARLES P. SCHLEGEL

Pres. Schlegel Manufacturing Co.

CHARLES WINSLOW SMITH

*Pres., Sherwood Shoe Co.
Trustee, East Side Savings Bank*

OSCAR B. SPIELER

*Secy, Treas. Big Elm Dairy Co.
Trustee, East Side Savings Bank*

ADOLPH STUBER

*Asst. Vice-President
Eastman Kodak Co.*

ARTHUR E. SUTHERLAND

*Official Referee
Supreme Court of New York*

GEORGE L. SWAN

*Pres. Gorstine & Swan
Construction Co.*

FRED K. THOMPSON

Pres. Cramer-Force Co.

CORNELIUS J. VANNIEL

General Comptroller, Eastman Kodak Co.

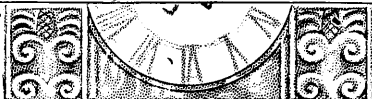
LEWIS S. WEST

Vice Pres.-Gen. Mgr. Despatch Shops, Inc.

Resources
\$31,265,806.26

Surplus
(Investment Value)
\$3,094,254.46

In the Heart of the Shopping District



EAST SIDE SAVINGS BANK

MAIN STREET *at the corner of* CLINTON AVE. SOUTH

TRUSTEES

WILLIAM BAUSCH
R. ANDREW HAMILTON
OSCAR B. SPIEHLER
HAMILTON C. GRISWOLD
HERMAN C. SIEVERS
ARTHUR A. BARRY
JOSEPH H. ZWEERES
CHARLES WINSLOW SMITH
SOL HEUMANN
RAYMOND L. THOMPSON
CHARLES T. CROUCH
ALEXANDER M. BEEBEE
HENRY B. ALLEN
LOUIS S. FOULKES, Jr.
HENRY W. KIMMEL



A CORNER on Saving

The East Side Savings Bank has *the* corner on convenience for your savings account.

Money deposited during the first three business days of any month draws interest from the first of the month if left until the end of the quarter. Interest is credited to accounts December 1 and June 1.

Safe Deposit Boxes
\$3.00 per year and up

OFFICERS

HERMAN C. SIEVERS Chairman of the Board	E. L. GOETZMAN Treasurer
JOSEPH H. ZWEERES President	PHILIP O. WILLIAMS Secretary
HENRY B. ALLEN Vice-President	C. H. BOORMAN Assistant Treasurer
R. A. HAMILTON Vice-President	ALEXANDER G. HAY Assistant Secretary
OSCAR B. SPIEHLER Vice-President	LEWIS A. PEAR Assistant Secretary
JOHN W. F. SWANTON Comptroller	H. C. GRISWOLD Attorney

MONROE COUNTY SAVINGS BANK

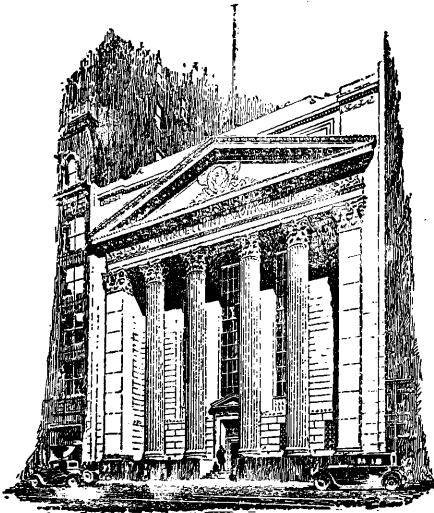
INCORPORATED 1850

OFFICERS

RUFUS K. DRYER, Chairman of the Board

GEORGE D. WHEDON, President
EDWARD BAUSCH, Vice-President
J. ALLEN FARLEY, Vice-President
FRANK T. TAYLOR, Treasurer
FRANK E. DONNELLY, Secretary
A. DEWEY BACON, Asst. Secretary

WALTER H. COUCHMAN, Asst. Secretary
JOSEPH G. KUNZ, Asst. Secretary
HAROLD F. LEDERMAN, Asst. Secretary
J. WESLEY RIBEY, Asst. Secretary
FRANK C. LEAPER, Auditor
STEWART & SPENCER, Counsel



TRUSTEES

RUFUS K. DRYER
EDWARD BAUSCH
JOSEPH MICHAELS
W. OSBORNE ASHLEY
CHARLES F. WRAY
J. ALLEN FARLEY
GEORGE D. WHEDON
EUGENE M. LOWENTHAL
AUGUSTINE J. CUNNINGHAM
WILMOT V. CASTLE
SMITH SHELDON
JOSEPH F. WELLER
VINCENT S. BENNETT
JOSEPH F. TAYLOR
ALBERT F. SULZER

Complete Savings Bank Service

TWO CONVENIENT OFFICES

35 STATE STREET

2 EAST AVENUE

ROCHESTER, N. Y.

ROCHESTER SAVINGS BANK

(INCORPORATED 1831)

Resources - \$67,693,000
More than 101,000 Depositors



West Main Street Office
47 WEST MAIN ST.

OFFICERS

EDWIN ALLEN STEBBINS, *President*
 JAMES S. WATSON, *Vice-President*
 EDWARD HARRIS, *Vice-President and Attorney*
 CHARLES F. TURTON, *Vice-President*
 JOHN C. HOSKING, *Secretary*
 CLYDE T. SUTTON, *Treasurer*
 JAMES W. GRAY, *Assistant Secretary*
 FRANK L. NIED, *Assistant Secretary*
 ARTHUR H. LAUTERBACH, *Assistant Secretary*
 HARRY N. KENYON, *Assistant Secretary*
 WALTER L. SCHMID, *Assistant Secretary*
 GEORGE C. WILCOX, *Assistant Attorney*

TRUSTEES

JAMES S. WATSON
 ERICKSON PERKINS
 J. CRAIG POWERS
 EDWARD HARRIS
 DANIEL M. BEACH
 E. ALLEN STEBBINS
 HERBERT J. WINN
 WALTER L. TODD
 M. H. EISENHART
 CHARLES F. TURTON
 HARPER SIBLEY
 ALBERT A. HOPEMAN
 MARION B. FOLSOM
 THOMAS G. SPENCER
 RICHARD M. HARRIS
 JAMES P. B. DUFFY
 JOHN R. SIBLEY



Franklin Street Office
40 FRANKLIN STREET

**SAFE DEPOSIT BOXES FOR RENT FROM \$3.00 PER YEAR UP
 AT THE FRANKLIN STREET OFFICE**

THE MECHANICS SAVINGS BANK

21 EXCHANGE STREET
 Branch, 89-91 EAST AVENUE
 Gas and Electric Building
 Rochester, N. Y.

Incorporated 1867

OFFICERS

WILLIAM B. HALE	- - - - -	Chairman of Board
WENDELL J. CURTIS	- - - - -	President
JAMES C. CLEMENTS	- - - - -	Vice-President
GEORGE WENDT	- - - - -	Vice-President and Secretary
ALEXANDER M. KESSELRING	- - - - -	Assistant Secretary
EUGENE J. BODETTE	- - - - -	Assistant Secretary
OSCAR J. BOTT	- - - - -	Assistant Secretary
MICHAEL M. SPANG	- - - - -	Assistant Secretary
HELEN A. WIGG	- - - - -	Cashier
ALFRED T. HALL	- - - - -	Assistant Cashier
JACOB CUSIMANO	- - - - -	Assistant Cashier
CURTIS FITZSIMONS	- - - - -	Attorney

TRUSTEES

WENDELL J. CURTIS	GILBERT J. C. McCURDY	CURTIS FITZSIMONS
WILLIAM B. HALE	HERBERT W. BRAMLEY	ARTHUR W. BEALE
JAMES C. CLEMENTS	GEORGE WENDT	J. SAWYER FITCH
FREDERICK S. MILLER	ARTHUR J. GOSNELL	DR. ALBERT K. CHAPMAN
EDWARD A. HALBLEIB	CHARLES F. HUTCHISON	CHARLES T. DePUY

MORRIS PLAN INDUSTRIAL BANK OF ROCHESTER

**COLLATERAL
 and
 PERSONAL
 LOANS**



*Made on Character
 and
 Earning Capacity*

32 CLINTON AV. NORTH ROCHESTER, N. Y.
 Telephone MAIN 1512

BANKERS to the MAN without BANK CREDIT

OUR RATE 2% MONTHLY

WE SERVE THE PEOPLE WHO WORK

PROVIDENT LOAN SOCIETY

31 EXCHANGE STREET - - - - ROCHESTER, N. Y.

CROSS BROTHERS CO., Inc.

Leather Belting Manufacturers

Dealers in

Conveying Equipment

Power Transmission Appliances

Millwrights and Belt Repair Men Promptly Furnished

Phones MAIN 8038—8039

112-114 MILL STREET

ROCHESTER, N. Y.

GLENWOOD 6200

HICKOK MANUFACTURING COMPANY

INCORPORATED

BELTS - BUCKLES - BRACES - GARTERS

MEN'S JEWELRY

Executive Offices and Factory

850 ST. PAUL STREET

ROCHESTER, N. Y.

Branch Offices, New York City, Chicago, St. Louis, San Francisco, Los Angeles and Houston

MAIN 3265

WM. F. SCHOCK

CITY BLUE PRINT CO.

31 ELM STREET

PHOTO COPIES

BLACK AND WHITE PRINTS

DRAWING MATERIALS

If you want business ALL of the time
advertise ALL of the time

Books

New, Standard, Rare, Used,
Religious, Educational, Junior.
Circulating Libraries

Social Stationery**Novelties****Stamps and Collectors' Supplies****Everything for the Office**

Commercial Stationery, Furniture, Safes
Files, Shelving, Lockers, Accounting
Systems

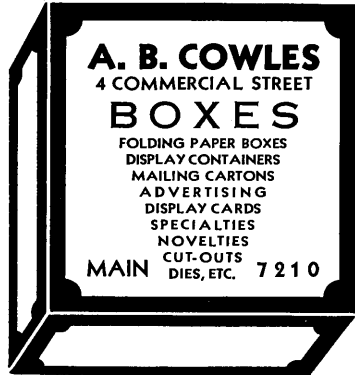
Sporting Goods**Games and Playthings****Educational Supplies****Shops**

furnishing Social and Business Engraving,
Printing, Direct Mail Advertising
Multigraphing

Established 1868

SCRANTOM'S

Powers and **Taylor**
Building **and** **Building**

**ROCHESTER FOLDING BOX CO.**

Color Advertising
Division

Folders
Booklets
Hangers
Window Displays
Counter Cut Outs
Box Tops

Corrugated
Division

Corrugated
Shipping
Cases
Corrugated
Specialties

Toy
Division

Jackbit
Playthings

Folding Box
Division

Cartons
Display Containers
Dummy Displays
Cigar Packs
Cigarette Shells
and Slides
Labels

Main Office and Plant, BOXART ST., ROCHESTER, N. Y.

Sales Offices, 12 EAST 41st STREET, NEW YORK, N. Y.

DIAMOND PAPER BOX CO., Inc.

Manufacturers of

Folding Boxes and Cartons

STRING AND BUTTON MAILING FOLDERS

PARAFFIN LINED BOXES

Phone Culver 2426

1-15 LEIGHTON AVENUE

ROCHESTER BOX & LUMBER CO.*Manufacturers of*

**Bottle Boxes, Packing Boxes, Lock-Corner Boxes,
Chestnut Fibre Board Cleated Boxes,
Shooks, Shavings and Sawdust**

CULVER ROAD SUBWAY - ROCHESTER, NEW YORK

Phones CULVER 400-401

H. P. NEUN CO., INC.*MANUFACTURERS OF***PAPER BOXES****CORRUGATED and FIBRE SHIPPING CASES***Folding Boxes*PRINTING

1698 UNIVERSITY AVE. Phone MONROE 1216 ROCHESTER

SIMPSON BOX & LUMBER CO., Inc.*Mfrs. of Wooden and Fibre Packing Boxes, Cut Crating and Shooks***LUMBER**

1290 MT. READ BLV'D Phone MAIN 2382 ROCHESTER

If it weren't for the false notion about the high price of a directory hundreds of people would no longer deny themselves the information to be found in one.

Established 1876

ALBERT WISCHMEYER, Pres.

Incorporated 1901

NUNN BRASS WORKS**MACHINISTS, BRASS FOUNDERS, FINISHERS AND SPECIAL
BRASS WORK TO ORDER**Manufacturers of Brewers' Supplies and the Nunn Patent Oil and Grease Cups,
Emergency Fire Hose Couplings, Plumbers' Goods and Floor Drains and Flanges.**Factory and Office 17 WENTWORTH ST. ROCHESTER, N. Y.**
PHONE GENESEE 163

ESTABLISHED 1842

HENRY WRAY & SON, Inc.

CASTINGS OF

***Brass, Nickel, Bronze, Babbitt Metal
Aluminum or Special Alloys***

BRONZE SIGNS AND MEMORIAL TABLETS

*Electric Furnace Process***Phones MAIN 1120-1121-1122****258 STATE STREET**WALTER H. BAUMER
HAROLD M. RECKLING

ARTHUR G. MOORE

T. WILKINSON RUSSELL
ERICKSON PERKINS, Sr.**ERICKSON PERKINS & CO.***MEMBERS*

New York Stock Exchange

ASSOCIATE MEMBERS

New York Curb Exchange

134-145 POWERS BUILDING
NEW YORK

-

PHONE MAIN 1144
BUFFALO**YOU LOSE MANY POSSIBLE SALES**Because the prospective buyer does not know where to get
what he wants to buy.If you are in display type in the classifications in this
book covering your goods or service, you are insured against
such losses.

Talk it over with us.

SAMPSON & MURDOCK CO., INC.**179 LINCOLN STREET**

-

BOSTON, MASS.

ABBOTT, PROCTOR & PAINE*Successors to A. J. Wright & Co.*

ESTABLISHED 1865

Members NEW YORK STOCK EXCHANGE — CHICAGO BOARD OF TRADE

STOCKS COMMODITIES BONDS

Hotel Seneca Arcade

DAVID B. LITTLE, Manager

Phone Stone 720

New York Curb Exchange

New York Cotton Exchange

New York Produce Exchange

New York Cocoa Exchange, Inc.

New York Coffee and Sugar Exchange, Inc.

Chicago Stock Exchange

Chicago Mercantile Exchange

Commodity Exchange, Inc.

Montreal Curb Market

Canadian Commodity Exchange, Inc.

GEORGE D. B. BONBRIGHT

CHARLES C. LEE

WILLIAM W. HIBBARD

HARTWELL P. MORSE

JOHN H. KITCHEN

KENNETH C. TOWNSON

RAYMOND J. BANTSEL

GEORGE D. B. BONBRIGHT & CO.

100 POWERS BUILDING

*Phone Main 4830**Members*

NEW YORK STOCK EXCHANGE

CHICAGO BOARD OF TRADE

Associate Members New York Curb Exchange



NEW YORK

BUFFALO

BINGHAMTON

J. S. BACHE & CO.

EDWARD S. OSBORNE, Manager

Members: New York Stock Exchange, Chicago Board of Trade,

New York Cotton Exchange, New York Coffee Exchange

and other Principal Exchanges

32 STATE STREET - - ROCHESTER, N. Y.

*Telephone MAIN 10***SHIELDS & COMPANY***Members*

New York Stock Exchange

Telephone MAIN 2428

39 STATE STREET

ROCHESTER, N. Y.

F. T. SAGE
D. S. RUTTY

CLARKE W. O'BRIEN

W. H. HOLLY
H. F. EMERY

SAGE, RUTTY & CO., Inc.

Investment Securities

1324 LINCOLN-ALLIANCE BANK BLDG. ROCHESTER, N. Y.
STONE 351

GRAHAM & CO.

C. W. WEIS, Jr., Resident Partner

F. E. McKELVEY, Manager

BROKERS

MEMBERS

New York Stock Exchange

New York Curb Exchange (Associates)

Chicago Board of Trade

Chicago Stock Exchange

SAGAMORE HOTEL Tel. STONE 640 115 EAST AVENUE

SUTRO BROS. & CO.

A. J. O'CONNOR — Associate Managers — EDWARD W. JUKES

Members

NEW YORK, CHICAGO, PHILADELPHIA AND DETROIT STOCK EXCHANGES
NEW YORK CURB EXCHANGE
CHICAGO BOARD OF TRADE
NEW YORK COTTON EXCHANGE
COMMODITY EXCHANGE INC.

Telephone STONE 980

1104-1112 LINCOLN ALLIANCE BLDG. - ROCHESTER, N. Y.

NEW YORK
COLUMBUS

ROCHESTER
WILLIAMSPORT

LOUISVILLE
HAMILTON

CINCINNATI
NEWARK

MIDDLETOWN
WHITE PLAINS

C. K. Reynolds
W. J. Granberry
John N. Eustis
Leo A. Meagher

GRANBERRY & CO.

ROY A. DAVIDSON, *Manager*

C. K. Reynolds, Jr
W. W. Kennedy
William E. Nulty
Henry Arden

Members

New York Stock Exchange
New York Curb Exchange (Assoc)
Commodity Exchange, Inc.

Chicago Stock Exchange
Chicago Board of Trade
Cincinnati Stock Exchange

31 EXCHANGE ST. PHONE MAIN 1292 ROCHESTER, N. Y.

WARNING!

“He Was a Stranger and He Took Me In”

Unknown solicitors representing various questionable publications take at least \$100,000.00 from Rochester business and professional men annually.

These publications include many one time directories and business indexes which are unauthorized by organizations which the solicitor claims to represent. They are of no value to anyone except the promoter.

Included in a list of over one hundred on file in this office, are the following classifications:

<i>Travel and Hotel Directories</i>	<i>Trade Indexes</i>
<i>Railroad Employees' Journals</i>	<i>Business Guides</i>
<i>Buyers Commercial Register</i>	<i>National Reference Guides</i>
<i>Sellers Reference Guides</i>	<i>N. Y. State Business Directories</i>
<i>Buyers Classified Guides</i>	<i>Industrial Directory</i>
<i>Sheriff's & Police Officer's Directories</i>	

Before paying for advertising in out-of-town directories represented by strangers, verify your signature and check the source of the order. **Before You Sign**, Phone this office for a report on the publication. Our information costs you nothing and may save you much—if you

INVESTIGATE—BEFORE YOU INVEST

BETTER BUSINESS BUREAU of ROCHESTER

INCORPORATED

1423 LINCOLN-ALLIANCE BANK BUILDING

Phone STONE 330

FRANCIS METAL DOOR and WINDOW CORP.

46 and 48 CORTLAND ST. - Phone MAIN 2315

*Steel Sash**Residence Casements**Fire Proof Doors and Windows**Rolling Steel Doors**Metal Covered Doors**Hollow Metal Doors and Windows**Ornamental Bronze and Aluminum**Bank Screens**Fine Show Cases**Landon Puttyless Skylights***AMERICAN GLASS and CONSTRUCTION CO.***Specialists in Store Front Construction*PLATE GLASS FOR STORE FRONTS, AUTOMOBILES
MIRRORS, ETC. GLASS OF ALL KINDS

46 and 48 CORTLAND ST.

- Phone Main 2315

New PULLMAN Adjustable Sash Balance**A Half Century of Progress**

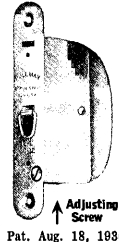
The most radical and important improvement in Spring Sash Balances in forty years. An ordinary screw driver makes the adjustment without removing the Balance or Sash. *Re-adjustment is possible at any time to permanently maintain a perfectly balanced window. All pressed steel construction - light in weight and non-breakable. All working parts are entirely encased so that no foreign matter can penetrate inside the housing and interfere with free action of the moving parts. No pulleys, weights or cords. Double hung opening completely installed in 10 to 15 minutes. Now guaranteed for the life of the building.

*Send for catalog showing complete specifications and architectural details***PULLMAN MFG. CORPORATION**

Established in 1886

1170 UNIVERSITY AVENUE Cor. Culver Road - ROCHESTER., N. Y.

* The tension of the inside coiled spring is actually changed, insuring smooth, easy and quiet operation impossible with any other type of adjustment.



Established 1873

Incorporated 1927

**ROCHESTER
LIME and CEMENT CORPORATION****BUILDING AND BLASTING MATERIALS**

Steel Houses and Buildings

OFFICE AND WAREHOUSE 174 COLVIN STREET

- ROCHESTER, N. Y.

Telephone Genesee 317

Office Phone
Glenwood 4166

Residence Phones
Main 1357-M or Stone 1271

GOOD STONE MANUFACTURING CO., Inc.

Mason and Builder Supplies

We Specialize in CUT CAST STONE

Garden Furniture, Cement Blocks, Steel Sash, Cement
Plaster, Lime, Gravel, Sand, Flue Lining, Etc.

OFFICE AND FACTORY

470 HOLLENBECK STREET

ROCHESTER, N. Y.

THEODORE H. SWAN BRICK AND TILE CO., INC.

Phones MAIN 3956—MAIN 3950

*Face Brick, all kinds and colors—Common Brick
Salt Glazed—Enameled and Ceramic Brick and Tile
Facing Tile—Hollow Tile Fireproofing—Floor Tile*

723 CLARISSA STREET

ROCHESTER, N. Y.

AMERICAN CLAY & CEMENT CORPORATION

Masons' and Builders' Supplies

CEMENTS—LIME—PLASTER—FACE BRICK—PAVING BRICK—FIRE
BRICK—INSULATING BRICK—TILE—SEWER PIPE—REINFORCING
MAINTENANCE PAINTS—WATERPROOFING—HIGH TEMPERATURE
CEMENTS — DYNAMITE and EXPLODERS — FIRE PLACE HEAT
CIRCULATORS—STEEL SASH—EXPANSION JOINT.

High Early Strength Cements

1175 EAST MAIN ST., ROCHESTER

Phones CULVER 1000—1001

P. A. DePUYT, President

W. C. CUNNINGHAM, Secretary and Treasurer

MONROE BLOCK CO., Inc.

Manufacturers of

CEMENT BUILDING BLOCKS

DEALERS IN MASONS' SUPPLIES

Phone MAIN 5707

348 EXCHANGE STREET

ROCHESTER, N. Y.

TELEPHONE MAIN 180

WHITMORE, RAUBER & VICINUS

DEALERS IN:

READY MIXED CONCRETE, CRUSHED STONE, SAND AND GRAVEL,
 INTERIOR MARBLE, TILE, PORTLAND CEMENT, FIRE BRICK,
 CLAY SEWER PIPE, CEMENT BLOCKS, SHEETROCK, STEELSASH,
 ORIENTAL STUCCO, METAL LATH

All Kinds of Builders' and Masons' Supplies

CONTRACTORS FOR:

ASPHALT PAVEMENTS, ASPHALT MASTIC
 FLOORS, CEMENT SIDEWALKS, DRIVEWAYS

All Kinds of Street and Sewer Work

OFFICE AND MAIN YARD:

51 GRIFFITH ST. ROCHESTER, N. Y.*Everything for Building But Lumber***MORSE SASH & DOOR CO.**

*Doors, Windows, Interior Trim, Stair
 and Porch Work, Etc.*

*Telephone 1835 Main***FORD ST. and WAVERLY PLACE ROCHESTER, N. Y.****HERB TAFT**PHONE
GENESEE 7796**BUILDING WRECKER**

Specializing in Building Garages. Overhead Doors

Cottages Erected Driveways Built

COAL - COKE - WOOD

New and Used Lumber and Building Materials

*Yard and Office***982 CHILI AVENUE - - ROCHESTER, N. Y.**

TICE & GATES

OUR SELECTIONS OF
CHINA, GLASS AND SILVER
 ARE UNSURPASSED IN ROCHESTER

We will be pleased to advise you regarding a Gift for
 your Every Requirement

PHONE STONE 646

347-349 EAST AVENUE - - - ROCHESTER, N. Y.

DIRECTORIES THAT REALLY DO DIRECT

Are Published by

SAMPSON & MURDOCK CO., Inc.

179 LINCOLN STREET - BOSTON, MASS.



PROPRIETORS

M. S. Leach F. J. Cieslik

**CLEANING
 and DYEING**

As It Should Be Done

MAIN 2169

20 CLINTON AVENUE, S.
 HOTEL SENECA BLDG.

DON'T KNOCK — BOOST!

SELECTED

If you want to live in the kind of a
 town,
 Like the kind of a town you like,

You needn't slip your clothes in a
 grip
 And start on a long, long hike.

You'll only find what you left be-
 hind,
 For there's nothing that's really
 new;

It's a knock at yourself when you
 knock your town,
 It isn't your town—its You—

The City Directory Boosts!

FRED H. GORDON
President and Treasurer

CHARLES C. SCHAEFER
Secretary

THE YATES COAL CO.

Anthracite **COAL** *Bituminous*
ALSO COKE

Orders for Private Residences Solicited

TELEPHONE No. 450-451 STONE

Main Office

612 LINCOLN-ALLIANCE BANK BUILDING

YARDS

93 INDUSTRIAL STREET

76 KING STREET and B. R. & P. RY. ROCHESTER

FLOWER CITY CHARCOAL COMPANY, INC.

WHOLESALE DEALERS AND DISTRIBUTORS

..FERTILIZER..

Coal - Coke - Disco - Ambricoal Briquets

Hardwood Charcoal

Lump—Granulated and Pulverized Charcoal Briquets

CLICQUOT CLUB BEVERAGES



Brand



Brand

135-149 COLVIN STREET

Genesee 476

ROCHESTER, N. Y.

BLACK DIAMOND COAL CORP.

DISTRIBUTORS

Old Company's Lehigh Anthracite

IT LASTS LONGER

BLACK DIAMOND COKE

—FUEL OILS—



ANTHRACITE

190 YORK STREET

ROCHESTER, N. Y.

PHONE GENESEE 7800

Coal

Anthracite **COAL** *Bituminous*

R. G. & E. **COKE** *All Sizes*

FUEL OIL

"OVER FIFTY YEARS IN BUSINESS"

Our Heating Expert Is At Your Service.

JENKINS & MACY CO.

General Offices:
100 Cutler Building
42 East Avenue

Telephone
STONE 416

Offices and Yards:
1045 Main St. East
119 Child Street
381 Main St. West

LANGIE

FUEL SERVICE, INC.

HI-HEAT COAL - SEMET-SOLVAY COKE

ALADDIN FUEL OILS—They Cost No More

CHRYSLER OIL BURNERS - - STOKOL COAL STOKERS

CHRYSLER AIRTEMP AIR CONDITIONING

Main Office, 326 Main Street, East

4680 Lake Avenue - - 693 South Avenue

357 St. Paul St. 2 Lake Ave.

PHONE STONE 4000

ALBERT E. MAY, President

HARRY A. MAY, Treasurer

H. H. BABCOCK & CO., INC.

Wholesale Dealers in

'blue coal'

BITUMINOUS COAL, COKE AND OIL

105, 106, 107, 108, 109 and 110 WILDER BLDG. - Phones MAIN 228-229

Sales Offices and Trestles

505 North Street, at N. Y. C. R. R.

720 Driving Park Av. at B. & O. R. R.

393 Main Street West, at Penn. R. R.

GRACE D. ROSS
Pres. and Sec'y

E. REED SHUTT
Vice-President

V. H. RUSSELL
Treas. and Mgr.

CHAS. C. WEST COAL CO., Inc.

Lehigh Valley Coal

COKE - - FUEL OIL

Main Office and Trestle - 281-285 NORTH UNION STREET

CULVER 999-2074

OPPOSITE PUBLIC MARKET

IRONDEQUOIT COAL & SUPPLY CO.

TELEPHONE GLENWOOD 6161

Famous Reading Anthracite
Pittsburg Soft Coal—R. G. & E. Coke

HAY—GRAIN—FEED

Fertilizer

Farm and Building Supplies

Cement

149 RIDGE ROAD EAST

ROCHESTER, N. Y.

COAL FUEL OIL COKEQuick Service by
Courteous Drivers*From a Truly
Local Concern***EDWARDS**
COAL & COKE
CO., INC.*Guaranteed Fuels**Main Office*85 HOWELL ST.
Cor. MONROE AVE.We also
Supply Soft Coal**LOW CASH PRICES***Phones*
MAIN 203—3077

Yard Office, 200 EXCHANGE STREET

F. W. EVANS, President and Treasurer

JOS. W. McCONNELL, Secretary

COAL - COKE - FUEL OIL*Phones*
3301—3302—420*OFFICE*
431 SMITH ST.

AUTHORIZED DISTRIBUTOR R. G. & E. DUSTLESS GUARANTEED COKE

Coal delivered in bags

20 to the ton

C. SOLON KELLOGG

We Sell Only the Best Quality

COAL and COKE

300 Powers Building

MAIN 886

700 Exchange St.

MEMBER
NATIONAL RETAIL CREDIT ASSN.

ESTABLISHED 1892

JONATHAN H. HEINRICH
President
GEORGE CULP
Secretary and Treasurer**THE CREDIT RATING CORPORATION**

610 Mercantile Building, Rochester

STONE 1853

DEPENDABLE COLLECTION SERVICE

CORRESPONDENTS EVERYWHERE

A. A. HOPEMAN

B. C. HOPEMAN

A. W. HOPEMAN & SONS CO.*Building Contractors*

OFFICE

569 LYELL AVENUE - ROCHESTER, N. Y.

HOPEMAN LUMBER AND MFG. CO., INC

STOELTZLEN & TAPPER, INC.*Carpenters and Builders*

Storm Windows — Screens — Porch Inclosures — Combination Doors

Ecclesiastical Carving in Stone and Wood

Jobbing of All Kinds Promptly Attended To

After 7 P. M. Call Charlotte 141

MILL, 72-78 SOUTH WATER STREET - MAIN 5973

The City Directory Draws Business

It covers all the buying centers around you. It gets inside and stays there; in touch with the business man and purchasing agent. Let us help you make up your advertisement and get the business.

ESTABLISHED 1863

PHONE MAIN 675

STEWART & BENNETT, Inc.**General Contractors**

STORE FRONTS AND REMODELING A SPECIALTY

124-132 N. WATER STREET,

ROCHESTER, N. Y.

WM. SUMMERHAYS SONS

CORPORATION

Boiler Settings, Fire Masonry, Special Furnaces, Power Plant Chimneys
of Radial and Common Brick . . . Lightning Arrestors Installed**SUMMERHAYS REFRACTORY SUPPLIES**

INCORPORATED

Fire Brick, Carborundum Brick, Insulating Brick, Plastic Fire Brick,
High Temperature Cements, Fire Clay, Asbestos.Phone *MONROE* 1155

Office and Yard, 614-632 CLINTON AVE. S., ROCHESTER

From 6 A. M. to 6 P. M.

Call

Glenwood 1232



After 6 P. M.

Call

Glenwood 329

C. P. WARD, INC.**General Contractor**

700 HOLLENBECK STREET .. ROCHESTER, N. Y.

AUGUST VORNDRAN**General and Mason Contractor**

Estimates Given on All Kinds of Building Work

AUGUST VORNDRAN NURSERY**Evergreens a Specialty**

Phone Webster 285

RIDGE ROAD ONE MILE WEST OF WEBSTER WEBSTER, N. Y.



Bartholomay

COMPANY, INC.

QUALITY ICE CREAM
BULK AND BRICK

Pasteurized Milk and Cream in Cream Top Bottles

Guernsey Pasteurized—Certified—Vitamin D Milk

MANUFACTURERS OF ICE

ICE CREAM DEPARTMENT
Phone MAIN 6520

555 ST. PAUL ST.

DAIRY DEPARTMENT
Phone MAIN 6523

BRIGHTON PLACE DAIRY **COMPANY, INC.**

VITAMIN D MILK

Under the Sealtest System of Laboratory Control

45 FULTON AVENUE

- -

ROCHESTER, N. Y.

GLENWOOD 144

A. W. WOOD
President

MAIN 386

OSCAR B. SPIEHLER
Treasurer

BIG ELM DAIRY CO.

DEALERS IN

Pasteurized and Certified Milk and Cream

Creamery Butter and Cottage Cheese Fresh Daily

476 EXCHANGE STREET

..

ROCHESTER, N. Y.

BONNYBROOK DAIRY, INC.*Milk - Cream**Baby First**Butter Milk*

PROMPT DELIVERY SERVICE

*Telephone Glenwood 4683***32 MYRTLE STREET ROCHESTER, N. Y.****"DRINK WITH A SMILE"**

WITH

STATT'S***Quality Dairy Products***

GEORGE J. STATT, Proprietor

MILK — BUTTERMILK — CHOCOLATE CHILL**550 LYELL AVENUE - - - ROCHESTER, N. Y.**

To have within reach such a fund of classified information as the Directory contains, is a help to any business man.

Should you wish to know the full name, home or business address, occupation, even the wife's name of any man in the city, the chances are good, you will find it in the Directory.

You can find where to buy and where to sell. How to get anywhere in the city and so many other items of interest, that will make this book well worth the price.

Order the Latest Directory Now

M c C U R D Y ' S
Rochester's Foremost
Quality Department Store
 MAIN and ELM STREETS
 Phone MAIN 5500

A Store of Separate, Segregated Shops, Specializing
 in Every Phase of Fashionable Feminine Apparel and
 Accessories, and in the Various Aids to Charm.

B. FORMAN CO.

Clinton Avenue South - - Cortland Street

Telephone MAIN 3900

ROCHESTER'S Thrift Centre
144 East Main Street
Stone 2300

ROCHESTER'S THRIFT CENTRE
Edwards
 STONE 2300

A progressive and alert department store
 with over a century of honest retailing to its
 credit. Offering good quality fashion-right merchan-
 dise for you, your family and your home at prices
 that will save you money.

There are **Results** at Low Cost
 In Registration in This Directory

Ask for Information

SAMPSON & MURDOCK CO., Inc.

179 Lincoln Street

Telephone HANcock 6310

Boston, Mass.

Detectives



MEMBER

Int. Ass'n Chiefs of Police
N.Y.S. Chiefs of Police Ass'n
Int. Ass'n for Identification

JOHN A. DOYLE, Pres.
A. T. DOYLE, V.-Pres.
K. V. DOYLE, Treas.

DOYLE DETECTIVE BUREAU

PROTECTION
DETECTION

<i>Investigations</i>	<i>Private Police</i>	<i>Armored Service</i>
Criminal	Protection of:	Transportation
Character	Residences	of: Deposits
Civil	Factories	Payrolls
Retail	Banks	Securities
Personal	Stores	Payroll
		Distribution



PHONE
MAIN
1743 - 1744
NIGHTS
MONROE
3278 or 5006-W

Offices in all principal cities of the United States and Europe

30 YEARS' SUCCESSFUL EXPERIENCE INSURES EFFICIENT TREATMENT OF YOUR PROBLEMS

COMMERCE BUILDING
ROCHESTER, N. Y.

MERCHANTS BANK BUILDING
ELMIRA, N. Y.

CONFIDENTIAL — EXPERT SECRET SERVICE — RELIABLE
LADIES DEPARTMENT

JENNINGS DETECTIVE AGENCY

A. F. JENNINGS, Principal

“DEEDS NOT WORDS”

CONSULTATION FREE

OFFICE TELS. STONE 950-951 ROCHESTER—Suite 410-412-414 Temple Bldg.
Night Telephones Gen. 1632-J—Gen. 6131

ERWAY DETECTIVE AGENCY

A. D. ERWAY, Director

Authorized, Licensed and Bonded by the State of New York

CRIMINAL, CIVIL, CHARACTER, AND INSURANCE INVESTIGATIONS

*Efficient Male and Female Operatives Furnished for
Weddings and Social Functions*

Protection and Detection

432 POWERS BUILDING - - - ROCHESTER, N. Y.
Phone Main 745—If no Answer Call Monroe 1208

Some firms talk wisely of business efficiency and then lose time and money sending to wrong addresses culled from an out-of-date directory.

For the New Directory which has been brought up-to-date

Write to

SAMPSON & MURDOCK CO., Inc.

Publishers

179 LINCOLN STREET

BOSTON, MASS.

THE PAINE DRUG COMPANY

ESTABLISHED 1820

G. W. SANFORD, Vice-Pres. & Treas.
 B. W. CARLIN, Surgical Dept. Mgr.
 H. T. DEAR, Laboratory Mgr.
 A. W. GRESENS, Traffic Mgr.

F. H. GOLER, Pres.
 H. F. ELY, Gen. Mgr.
 A. J. KAUFMAN, Buyer

F. W. FLEMING, Secy.
 E. F. HOHMAN, Auditor
 E. B. MOGENHAN, Prescription Dept. Mgr.
 A. E. MOWERS, Asst. Prescription Dept. Mgr.

Apothecaries

PHYSICIANS' SUPPLIES and SURGICAL INSTRUMENTS
 TRUSSES and SUPPORTERS

Telephone MAIN 1820

24 and 26 EAST MAIN STREET - - ROCHESTER, N. Y.

CHARLES C. HEISE
 Pres. and Treas.

MARVIN B. DAVIS
 Vice-Pres.

J. MacLEOD ROBERTSON
 Secretary

J. K. POST DRUG COMPANY

ESTABLISHED 1839

"FIRST OF ALL A DRUG STORE"

Wholesale and Retail Druggists

Manufacturers of Pharmaceutical Preparations

YOUR PRESCRIPTION FILLED BY SPECIALISTS

Physicians Supplies

Hospital Supplies

Trusses and Abdominal Belts

17 MAIN STREET, E. - - PHONE MAIN 2194

McKesson & Robbins, Inc.

ROCHESTER DIVISION

Wholesale Druggists***Wholesale Liquors***

SODA FOUNTAINS

STORE FIXTURES

DRUGGISTS SUNDRIES

Wholesale Drug Dept., 230-236 St. Paul St.—Phone Stone 4580

Wholesale Liquor Dept., 235 St. Paul St.—Phones Main 754-755-756

This Book is Your Silent
 Salesman

ADVERTISE AND PUT IT TO WORK

BERGER BROS. ELECTRIC MOTORS, INC.

Not affiliated with any other concern of similar name in Rochester

1346 UNIVERSITY AVENUE

Telephones MONROE 2094
 MONROE 2095
 MONROE 2096
 Night CHAR 1810-J
 MONROE 6460
 MONROE 100
 WESTERN UNION W U X
 N. Y. C. MAIN LINE SIDING



NEW MOTORS
 REBUILT MOTORS
 ACCESSORIES
 CONTROL
 REPAIR PARTS
 MOTOR REPAIRS
 MOTOR SERVICE
 MOTOR INSTALLATION

TRANSFORMERS REPAIRED

Authorized Service and Parts for G. E. Motors and Control

HICKSON ELECTRIC AND RADIO CORPORATION*Radios, Washers, Refrigerators, Appliances and Supplies*

SOUND AND PAGING SYSTEMS

Wiring, Fixtures, Electrical Construction and Repairs of Every Description

ESTIMATES ON REQUEST

Cor. MAIN and FRANKLIN STREETS ROCHESTER, N. Y.
 Opp. EAST AVENUE Phone STONE 93

LAUBE ELECTRIC CORPORATION*Electrical Contractors - Heating Equipment*

TIMKEN SILENT AUTOMATIC OIL BURNERS

S. T. JOHNSON INDUSTRIAL OIL BURNERS

For Installation and Service Call STONE 104

If not answered Call MONROE 2482

191-193 EAST AVENUE - - ROCHESTER, N. Y.

Give your business a chance. Display it in your city directory under headings describing your different lines. They will bring you increased sales at less expense than any other salesman in your employ.

T. H. GREEN ELECTRIC CO.

INCORPORATED

Contractors and Manufacturers

Power and Light Installations

Panels and Switchboards Automatic Telephones

General Electric Motors and Apparatus

Motor and Apparatus Repairs Electrical Supplies

Radio and Appliances

31-37 N. WATER ST., ROCHESTER, N. Y.

Telephones Main 555-556

MUTUAL BENEFITS — SOCIAL ACTIVITIES — NEW IDEAS

The Associated Commercial Industries

“New Ideas for Progressive People”

725 COMMERCE BUILDING

Telephone Main 7705

1846 92 YEARS OLD AND STRONGER **1938**
THAN EVER

Sampson & Murdock Co., Inc.

179 Lincoln Street

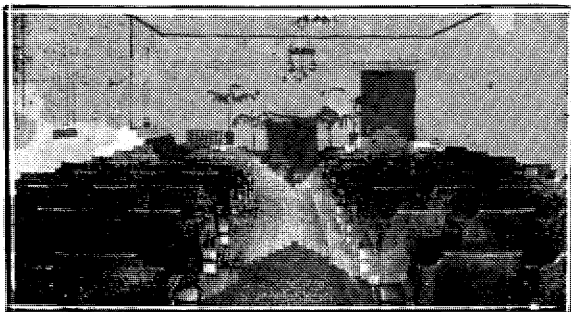
Boston, Mass.

L. SCHAUMAN'S SONS

Phone
MAIN 2274

Since 1872

Funeral Directors



PUBLIC FUNERAL CHAPEL

Phone Main 2274

Open Day and Night

609 CLINTON AVE., NORTH .. ROCHESTER, N. Y.

ANDREW J. MATTLE

JOHN W. MATTLE

A. J. MATTLE & SON

Funeral Directors

Phone STONE 1552

300 CUMBERLAND STREET

ROCHESTER, N. Y.

EDWARD E. HAUBNER

SARTO W. STALLKNECHT

HAUBNER & STALLKNECHT

*Funeral Directors
and Embalmers*

828 JAY STREET Genesee 300 ROCHESTER, N. Y.

Funeral Directors

PHILIP A. BENDER

CHARLES W. BENDER

CHRISTIAN BENDER

BENDER BROTHERS

ESTABLISHED 1859

Funeral Directors

Phone STONE 1179

301 ALEXANDER STREET ROCHESTER, N. Y.

HENRY D. HALLORAN & SONS

(THOMAS B. MOONEY'S SONS, INC.)

HENRY D. HALLORAN, Pres.

M. ALVAH HALLORAN, Sec. and Treas.

VERNON E. HALLORAN, Vice-Pres.

Funeral Directors

195 PLYMOUTH AVENUE, SOUTH

Phones MAIN 127-128

ROCHESTER, N. Y.

RUFUS F. MAIER

GERARD L. MAIER

L. W. MAIER'S SONS

67TH YEAR — ESTABLISHED 1872

Funeral Directors

Telephone STONE 609

870 CLINTON AVENUE NORTH

-

ROCHESTER, N. Y.

THOMAS F. TROTT

Successor to HERMANCE COMPANY

Funeral Home

Telephone STONE 1524

683 EAST MAIN STREET

- - -

ROCHESTER, N. Y.

C. F. SCHEUERMAN SONS**Funeral Home**

The Display at our Funeral Home shows the complete
Funeral Service in Plain Figures

230 BROWN STREET*Phones Genesee 438-5411***EUGENE A. TIMMERMAN****Funeral Director**

FUNERAL PARLORS FOR YOUR CONVENIENCE

*Phone Monroe 1684***510 MONROE AVENUE****ROCHESTER, N. Y.****NATIONAL CASKET COMPANY, Inc.**

Phones MAIN 8 and 9 142 EXCHANGE STREET

Largest Manufacturers of Funeral Supplies in the World

— BRANCHES —

Albany, N. Y.	Chicago, Ill. (2)	Long Island City, N. Y.	Pittsburg, Pa.
Atlanta, Ga.	Cleveland, Ohio	Nashville, Tenn.	Portland, Me.
Ashville, N. C.	Dallas, Tex.	Newark, N. J.	Providence, R. I.
Baltimore, Md.	E. Cambridge, Mass.	New Haven, Conn.	Rochester, N. Y.
Boston, Mass. (2)	Harlem, N. Y.	New York, N. Y. (2)	Scranton, Pa.
Brooklyn, N. Y.	Indianapolis, Ind.	Oneida, N. Y.	Syracuse, N. Y.
Buffalo, N. Y.	Louisville, Ky.	Philadelphia, Pa.	Washington, D. C.

The cost of Reference Advertising
of the above type is more than
offset by its results.

Ask About Our Convenient Plan of Deferred Payments!

HOWE & ROGERS CO.

COMPLETE HOME FURNISHINGS

Rugs, Furniture, Lamps, Draperies, Radio, Pianos
Linoleum, Stoves, Refrigerators, Washers, Vacuum Cleaners

89 CLINTON AVE. S. - TELEPHONE STONE 1800

GET BETTER VALUE BY BUYING BETTER FURNITURE



YOUR HOME IS IMPORTANT!

*Invest in Good Living Equipment,
"FITTING FURNITURE"*

*for
Inspiration, Convenience, Satisfaction.*

MILLER CRAFT SHOP

286 COURT STREET STONE 2221

UPHOLSTERING—HOME MODERNIZATION SERVICES—REPAIRING

GEO. J. MICHELSEN
President

R. J. MICHELSEN
Vice-Pres. and Sec.

W. F. MICHELSEN
Treasurer

GEORGE J. MICHELSEN FURNITURE CO.

MANUFACTURERS OF

Bed Room Furniture

Office, Factory and Salesroom

172-182 AVENUE D - - ROCHESTER, N. Y.

Phone GLENWOOD 4719

Your Advertisement Here

Would be constantly before the public—the
buyers—twenty-four hours a day—three hun-
dred and sixty-five days a year—every year

—Think it over

Rochester's Largest Exclusive Manufacturing Furriers



**LATEST STYLING OF
FUR COATS FOR 1937**

Relining-Remodeling-Repairing-Cleaning

Automatic Fur Cold Storage

PHONE MAIN 5729

WM. V. GRAESER CO. 38-40-42 Clinton Ave., North

Original Members of MENG & SHAFER

William F. Shafer FRIGID FUR STORAGE STONE 18	FASHION IN FURS SHAFER CO. 27-29 GIBBS STREET <i>Manufacturing Furriers</i> FUR COATS — FUR SCARFS <i>also</i> FURS FASHIONED TO MEASURE	S. George Shafer RETYLING REPAIRING RELINING Rochester, New York
--	---	--

BREWSTER CRITTENDEN & CO., INC.

WHOLESALE GROCERS

New Location

B. R. & P. WAREHOUSE

48 KING STREET - PHONE MAIN 224

Your City Directory is one of the
Surest ways of directing the demand
for the goods or service you want to sell.

HENRY LESTER HARDWARE CO., INC.

GROVER A. CLICQUENNOI, President and General Manager

RUSSWIN-BUILDERS HARDWARE*Distributors***BERRY BROS. PAINTS and VARNISHES***Williams Pivot Sash***DELTA TOOLS****STARRETT TOOLS***Lawco Medicine Cabinets**School Wardrobes**Overhead Type Garage Doors***150 West Main Street****Rochester, N. Y.**

MAIN 5355

— TELEPHONES

— MAIN 5356

**IRON FIREMAN
AUTOMATIC STOKERS**

Domestic, Commercial, Industrial

GREEN & DWYER, INC.*AUTHORIZED DEALERS*

258 COURT STREET

-

-

PHONE STONE 254

Maps of RochesterFolded in Pocket Form with Complete
Street Index, Thirty-five Cents each.**SAMPSON & MURDOCK CO., Inc.**

729 POWERS BUILDING

ROCHESTER, N. Y.

MATHEWS & BOUCHER

WHOLESALE

HARDWARE MERCHANTS

Mill and Factory Supplies
 Machinists' Tools and Supplies
 Plumbers' Supplies

Builders' Hardware
 Carpenters' Tools

Agricultural Tools
 Tinnerns' Supplies

Electrical and Radio Supplies

Skates and Sleds
 Poultry Supplies

Wire Screens and Fencing
 Roofing Materials and Supplies

*We Solicit Your Orders by Mail or Telephone
 Quality Service and Price Guaranteed*

26 EXCHANGE STREET

Tels. MAIN 1064-1065-1066-1067

**F
O
R
D**

ROCHESTER, N. Y.	-	-	350 ROOMS
BUFFALO, N. Y.	-	-	750 ROOMS
ERIE, PA.	-	-	400 ROOMS
TORONTO, CANADA	-	-	750 ROOMS
MONTREAL, CANADA	-	-	750 ROOMS

*Rates Single \$1.50 to \$2.50
 (NO HIGHER)*

D HOTELS

THE NORMANDIE-APARTMENT HOTEL

253 ALEXANDER STREET

PHONE STONE 1840

165 Apartments, Each with Private Bath

Furnished Suites—By Day, Week or Month

Single Rooms \$2.00 up Double Rooms \$3.00 up

Private Dining Rooms For

BANQUETS WEDDINGS PARTIES

DINING ROOM - DELICATESSEN - GARAGE

HOTEL ROCHESTER

AIR CONDITIONED LOBBY, DINING ROOM AND GRILL
for the Comfort of Our Guests

Excellent Facilities for Private Parties

Phone MAIN 6510 for Reservations

MAIN STREET WEST AT PLYMOUTH AVENUE SOUTH

HETZLER BROS. ICE CO., Inc.

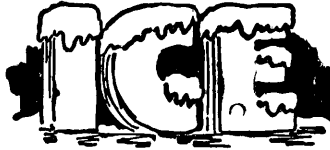
Wholesale and Retail

Established 63 Years

ABSO-PURE

COAL, COKE

801
DRIVING PARK
AVENUE



Imported and Domestic
BEER and ALE

**GLENWOOD
446**

GENERAL ICE CREAM CORPORATION

ROCHESTER DIVISION

Wholesale and Retail Manufacturers of

Plain and Fancy Creams and Ices

"FRO-JOY"—Ice Cream at its Best

PHONES MAIN 917, 918, 919

CLIFF ST. FOOT OF WHITE ST.

ROCHESTER, N. Y.

**A Real
Necessity
in Every
Office**

THE CITY DIRECTORY

The Modern Up-to-Date Method
of Getting Accurate Information Quickly

A Time Saver—A Money Maker For Every Business

Let Us Show You How

38 TH YEAR

PERCY B. DUTTON

Transacting Business As

DUTTONS INSURANCE OFFICE

ESTABLISHED 1899

This Office Represents Reliable Companies Which Are
Prompt and Fair in Adjustment and Payment of Claims.

INSURANCE OF ALL FORMS, PRINCIPALLY,

FIRE—Lightning, Rents, Use & Occupancy,
Smoke Damage

WINDSTORM—Hail, Explosion, Riot and Civil
Commotion, Air Craft and Motor Vehicle

LIABILITY—Public, Owners-Landlords &
Tenants, Elevator, Boiler, Compensation

ACCIDENT—Health, Plate Glass, Burglary

LIFE—Term, Ordinary, Endowment, Income,
Annuity, Partnership, Group

BONDS—Contract, Fidelity, Surety

AUTOMOBILE — Liability, Property Damage,
Fire, Theft, Collision

Our Advice has helped many property-owners in protecting their
Assets from Loss. Our Service gives satisfaction to Policy-holders.
We are freely consulted by appointment without obligation.

ASSOCIATES**JESSE H. DUTTON — WALTER J. DUTTON**

Member Underwriters Board of Rochester, New York
State and National Associations of Insurance Agents.

TELEPHONES - MAIN 1022 & MAIN 1023

8 Exchange St. Corner Main St. E.

FOURTH FLOOR - WILDER BUILDING

For Over 20 Years Agents of

Zurich General Accident & Liability Insurance Co.

Claims Settled Through This Office

1852 — 1937

J. A. DUPUY, Chairman of the Board
 W. OSBORNE ASHLEY, Pres.
 CHARLES E. SCHMIDT, Treas.

ARTHUR L. GRIFFITH, Vice-Pres.
 FRED. D. ZWICK, Sec'y

EGBERT F. ASHLEY CO.**General Insurance****UNION TRUST BUILDING, 19 MAIN ST., WEST***Member of Underwriters Board of Rochester, N. Y., Inc.***COMPANIES REPRESENTED**

Connecticut Fire Insurance Co. of Hartford, Conn.
 Fire Association of Philadelphia, Pa.
 Great American Insurance Co. of New York, N. Y.
 Guarantee Company of North America of Montreal, Canada
 Hartford Fire Insurance Co. of Hartford, Conn.
 Hartford Live Stock Ins. Co. of Hartford, Conn.
 Hartford Steam Boiler Inspection & Ins. Co. of Hartford, Conn.
 North British & Mercantile Ins. Co. of London, England
 Providence-Washington Ins. Co. of Providence, R. I.
 Rochester American Ins. Co. of New York, N. Y.
 Standard Accident Insurance Co. of Detroit, Mich.
 United States Guarantee Co. of New York, N. Y.

**AUTOMOBILE — BONDS — BURGLARY — ELECTRIC MACHINERY
 ENGINE BREAKAGE — FIRE — HAIL — LIABILITY — LIVE STOCK
 MARINE — PLATE GLASS — RAIN — SPRINKLER LEAKAGE — STEAM
 BOILER — TRANSPORTATION — USE AND OCCUPANCY — WIND-
 STORM — WORKMEN'S COMPENSATION**

REPRESENTED BY

HERMANN DUILL BYRON PERRY, JR.
 HARRY E. MILLER FREDERICK G. MEYER
 HERBERT J. HOEFFEL

Edward F. Traver, Adjusting Dept. (Workmen's Compensation—Automobile)

R. T. Goodwin, Steam Boiler Inspector

Telephone Main 444**ROCHESTER, N. Y.**

CARL H. HENNRICH

INC.

*Member of The Underwriters Board of Rochester, N. Y., Inc.
National Association of Insurance Agents*

We Do Not Sell Assessment or Cut-Rate Insurance

INSURANCE and BONDS

Of Every Description

The Application of Systematic, Scientific Analysis to the Problems of Insurance is the Surest Way of Securing both Adequate Protection and Lowest Cost.

Our organization is equipped to provide this valuable service

Companies Represented

General Agents

Hartford Accident & Indemnity Co. of Hartford, Conn.

Agents

Continental Insurance Co. of N. Y.

United States Fire Ins. Co. of N. Y.

Niagara Fire Insurance Co. of N. Y.

Hartford Fire Ins. Co. of Hartford, Conn. (Auto. Dept.)

FOR SERVICE—Telephones MAIN 435—436

4th Floor, East Ave. Building .. 49 EAST AVENUE

E. S. BOHACHEK INC.

General Insurance

General Agents—(Am.) Lumbermens Mutual Casualty Co. of Illinois

Our Companies Have Been Paying From 15% to 25%
Dividends for Over 25 Years

PHONES MAIN 87-88

LOEWS ROCH. THEATRE BLDG. - CLINTON AVE. S. AT COURT

A. F. STAHL, Pres.
WM. F. STRANG, Secy.

A. S. BATES, Vice Pres.
I. M. WOOD, Asst. Treas.

ROCHESTER AGENCY, Inc.

Incorporated 1912

*Insurance Protection You
Can Rely Upon*

2040 EAST AVENUE, or The Nearest Telephone

Member Local, State and National Associations

Telephone MONROE 1345

AUSTIN F. GRAB, Pres. ROBERT F. WOERNER, Vice Pres. LEONARD H. HENDERSON, Vice Pres.
 ROY A. DUFFUS, Sec'y PHILIP C. GOODWIN, Treas.

JAMES JOHNSTON AGENCY

INCORPORATED

NO. 204 GRANITE BUILDING

Telephone MAIN 697

INSURANCE

Companies Represented

Home Insurance Company of New York		Eagle Indemnity Company
City of New York Insurance Company		American Surety Company

Agency Representatives

WILLIAM R. ORWEN ARTHUR L. WELSH JOHN A. PARK

261
MAIN

HARRY J. McKAY

261
MAIN

Member of the Underwriters Board of Rochester, N. Y., Inc.
 National Association of Insurance Agents

GENERAL INSURANCE SERVICE

Representing Companies with a Century's Record for
 Service and Satisfactory Settlements

409-413 Central Trust Building - - 25 East Main Street

Frederick Mutschler, Representative

ROMAN WOLFERT

ESTABLISHED 37 YEARS

WOLFERT BROTHERS

Marie M. Wolfert Leo F. Rombaut Anna T. Wolfert
 Associates

General Insurance

TRIANGLE BUILDING

MAIN STREET E. and EAST AVENUE - ROCHESTER, N. Y.

Phones MAIN 478 and MAIN 479

LOEWENGUTH & DINEEN

INCORPORATED

FREDERICK M. LOEWENGUTH

*President***General Insurance Surety Bonds**

Members of The Underwriters Board of Rochester, N. Y., Inc.

Insurance Agents 53 Years

Phone MAIN 1251

**34 STATE STREET - Room 208
ROCHESTER, NEW YORK**EMIL R. BOLLER, *President*HERBERTA E. BOLLER, *Vice-President*DONALD G. CLARK, *Secretary***EZRA J. BOLLER AGENCY, INC.***Member of National Association of Insurance Agents*

We do not sell Mutual or Cut-Rate Insurance

GENERAL INSURANCEAccident
Automobiles
Boilers
Bonds
BurglaryCompensation
Elevators
Fire
Group Insurance
HealthLife
Marine
Parcel Post
Plate Glass
Public LiabilitySprinkler Leakage
Teams
Tornado
Tourist Floater
Use and Occupancy**834-836 GRANITE BLDG.**

MAIN 5304-5305

ROCHESTER, N. Y.E. C. MOONE, *Pres.*
R. M. AMESBURY, *Asst. Treas.*F. J. RIEDMAN, *Vice Pres. and Sec'y*
M. M. MOONE, *Asst. Sec'y***E. C. MOONE, Inc.****GENERAL AGENTS****American Surety Co. of N. Y.****Pennsylvania Fire Insurance Co., Phila, Pa.****American Equitable Assurance Co. of N. Y.****Merchants Fire Assurance Corp. of N. Y.****Pacific Fire Insurance Co. of N. Y.****Maryland Casualty Co., Baltimore, Md.****Pearl Assurance Co., Ltd., Cleveland, Ohio****400 TAYLOR BUILDING****STONE 6065****ROCHESTER, N. Y.**

Insurance (General)

FIRE
BURGLARY

LIABILITY
PLATE GLASS

ACCIDENT
HEALTH

HARRY B. CROWLEY

Member of the Underwriters Board of Rochester, N. Y., Inc.

National Association of Insurance Agents

We do not sell Mutual or Cut-Rate Casualty Insurance

INSURANCE

STONE 3908

403-405 GRANITE BUILDING

AUTOMOBILES

BONDS

COMPENSATION

BOILERS

HENRY S. FORBES
President

CHESTER C. CHAMPION
Secretary & Treasurer

FORBES & PORTER, INC.

General Insurance

Member National Association of Insurance Agents
Member Underwriters Board of Rochester, N. Y., Inc.



306 Granite Building

130 Main St. E., Rochester, N. Y.

TELEPHONE MAIN 833

EDW. ENGLEHARDT CO.

FRANK H. ENGLEHARDT, Mgr.

Fire, Casualty, Marine Insurance
Surety Bonds

16 STATE STREET

Phone Main 1387

ROCHESTER, N. Y.

FIRE

AUTOMOBILE

COMPENSATION

LIFE

ACCIDENT, ETC.

CLARENCE A. VICK

General Insurance

INSURE IN DIVIDEND-PAYING COMPANIES

20% Savings Annually Past 12 Years

146-147 CUTLER BLDG.

Telephone Stone 3180

ROCHESTER, N. Y.

HAROLD A. PYE **FRANK O. HAYES**
HAROLD A. PYE AGENCY

STANDARD INSURERS' AGENCY OF N. Y., Inc.

Writing All Forms of

FIRE, CASUALTY, MARINE INSURANCE

Fidelity and Surety Bonds

912-914 GRANITE BUILDING

Phones Stone 3637—3638

T. A. SHARP
President

C. EMMETT HAYES
Treasurer

C. R. HAGGERTY
Secretary

HAYES, SHARP & HAGGERTY, Inc.

Member of the Underwriters Board of Rochester, N. Y., Inc.

National Association of Insurance Agents

We do not sell Mutual or Cut-Rate Casualty Insurance

General Insurance

414 MAIN STREET, EAST, Cor. Gibbs ROCHESTER, N. Y.

Branch Service Office, 833 GENESEE VALLEY TRUST BLDG., 45 EXCHANGE ST.

PHONES STONE 1195—1196—1197

R. S. PAVIOUR & SON, Inc.

ERNEST A PAVIOUR, President

JAMES H. FARRELL, Treasurer

OFFICE 67 YEARS OLD—ESTABLISHED 1870

Members of the Underwriters Board of Rochester, N. Y., Inc.

National Association of Insurance Agents

COMPANIES REPRESENTED

Phoenix Insurance Company of Hartford, Conn.

United States Casualty Company of New York

1233-1245 LINCOLN ALLIANCE BANK BLDG. Phone MAIN. 220

INSURANCE

Acknowledged by all thinking people to be one of the
greatest benefits given to our age.

The companies represented in these pages cover all
known kinds and are safe and reliable.

Insurance (General)

JAMES C. CLEMENTS

1896 — 1938 ⁹³⁹

H. EVEREST CLEMENTS

JAMES C. CLEMENTS, INC.
Insurance
 409 POWERS BUILDING MAIN 219

Company Representation

Globe Indemnity Company
The Liverpool and London and Globe Insurance Company, Ltd.

Federal Insurance Company

**VIERHILE AND DE MALLIE
INC.**

MEMBER OF THE UNDERWRITERS BOARD OF ROCHESTER, N. Y., INC.
NATIONAL ASSOCIATION OF INSURANCE AGENTS
We do not sell Mutual or Cut-Rate Casualty Insurance

WE WRITE
ALL KINDS OF
INSURANCE

INSURANCE

ALL CLAIMS
ADJUSTED AT
THIS OFFICE

502-505 POWERS BUILDING

Telephone Main 408

THE LIKLY AGENCY, INC.

INSURANCE

Fire — Casualty — Surety — Marine

424 CUTLER BUILDING

Telephone STONE 99

INSURE

YOUR LIFE for your family's sake

YOUR PROSPERTY for your own sake

YOUR BUSINESS for goodness sake, by placing
your Advertisement in the

“On the Job
365 Days
a Year”

CITY DIRECTORY

LUCAS & DAKE CO.

MAIN 938

INC.

MAIN 939

General Agents

ÆTNA LIFE INSURANCE COMPANY, HARTFORD, CONN.

(Accident and Liability Department)

ÆTNA CASUALTY & SURETY COMPANY, HARTFORD, CONN.

AUTOMOBILE INSURANCE COMPANY, HARTFORD, CONN.

INSURANCE

LINCOLN-ALLIANCE BANK BLDG.—31 EXCHANGE ST., RM. 201

DAVID GOLDMAN, President

ESTABLISHED 1914

DAVID GOLDMAN CO., Inc.*Insurance and Real Estate***STORE LEASING**

We are members of National, State and Local Associations

MAIN 2984

- - 6 STATE ST., ELWOOD BUILDING

We write all forms of Insurance and Bonds

— E. J. SCHEER, INC. —*Rochester's Finest Jewelry Store*Diamonds
Mountings
Jewelry
Silverware
Clocks
Crystal**"SCHEERTON" MOUNTINGS***Visit Our Beautiful Silver Dept.*WATCHES
Movado
Hamilton
Tavannes
E. J. Scheer
Elgin

EXPERT WATCH AND JEWELRY SERVICE

259 MAIN ST. E. Opposite SIBLEY'S - - Phone Stone 710

J. C. WILSON COMPANY*Jewelers and Pawnbrokers*

Money advanced on Diamonds, Watches, Etc. Rates 1, 2 and 3%

Watches, Diamonds, Jewelry and unredeemed Pledges for Sale

39 MAIN ST., EAST (up stairs)

PHONE MAIN 5738

ESTABLISHED 1871

Stecher-Traung Lithograph Corporation

Capital \$3,500,000.00

Labels for canned foods and other products—Folding Boxes, Seed Packets, Seed Cartons, Seed Catalog Covers and Inserts, Window Strips and Displays.

Phones Monroe 450, 451, 452, 453

274 N. GOODMAN ST.

“LIKLY’S”

SINCE 1844

ROCHESTER'S LEADING LUGGAGE STORE

WARDROBE TRUNKS
DRESS TRUNKS
STEAMER TRUNKS
TRAVELING BAGS

GLADSTONE BAGS
SUIT CASES
LADIES HAND BAGS
SMALL LEATHER GOODS

COSTUME JEWELRY
UMBRELLAS
GIFT NOVELTIES
TRAVELING CLOCKS

Golf Bags and Accessories

Fitted Suit Cases and Bags

We Manufacture Auto Trunks, Sample Trunks, Cases, Portfolios and All Kinds of Luggage

271 MAIN STREET EAST

— ONLY ONE STORE —

PHONE STONE 915

S. D. EATON

H. B. SIMS

EATON & SIMS

Foremost in Luggage and Gifts

DRESS TRUNKS
FITTED OVERNIGHT CASES
GIFT NOVELTIES
GLADSTONE BAGS
JEWELRY
LADIES' HAND BAGS

SMALL LEATHER GOODS
STEAMER TRUNKS
SUIT CASES
TRAVELING BAGS
TRAVELING CLOCKS
WARDROBE TRUNKS

29 CLINTON AVE, S.

(Opp. Hotel Seneca)

Phone STONE 4088



PEERLESS PRODUCTS, INC.

Wholesale and Retail

Lumber — Coal — Interior Trim

Insulation — Roofing — Dowels

Phone MAIN 2840

691 EXCHANGE STREET

-

-

ROCHESTER, N. Y.

CROUCH & BEAHAN CO.

ESTABLISHED 1855

Lumber Products - Paint - Coal and Oil

Pee Gee Paints, Varnishes, Enamels and Brushes. Temlock Insulation, Tile and Planking

Celotex Vaporseal Sheathing. Balsam Wool Insulation

Over The Top Door Hardware.

Sheet Rock Interior Trim

Shingles - Lath - Posts - Pickets, Etc.

Cold Storage Insulation

*Telephone GLENWOOD 350***99 DEWEY AVE. opposite LORIMER STREET, ROCHESTER, N. Y.**

J. A. DETWEILER, President

C. B. OSTRANDER, Secretary-Treasurer

EXCHANGE LUMBER CO., INC.

ESTABLISHED 1909

INCORPORATED 1920

Construction Lumber—Hardwoods

Sash — Doors — Interior Trim — Oak Flooring

U. S. GYPSUM PRODUCTS	}	Sheet Rock —	Rock Lath
		Insulation Board—	Hard Board
		Pulp Board —	Roofing

551-563 LYELL AVENUE

- -

*Telephone GLENWOOD 2300***HERRICK LUMBER CO., Inc.**

Successors to COMSTOCK LUMBER CO., Inc.

= LUMBER =**1030 MAIN STREET, EAST****ROCHESTER, N. Y.***Phones CULVER 1416—1417***GEORGIAN BAY LUMBER CO., Inc.**

WHOLESALE AND RETAIL

Lumber - Edgwood Shingles - Sash

Fine Interior Trim - Asphalt Roofing - Wall Board

Plaster Board - Celotex - Presdwood - Plywood

PHONES CULVER 1400—1401

181 HUMBOLDT STREET, ROCHESTER, N. Y.**N. TONAWANDA****PENN YAN****GENEVA**

Lumber and Finish

C. C. MORSE, President
 FREDERICK G. MORSE, Vice-Pres. WHITING B. MORSE, Vice-Pres. and Treasurer
 JOHN P. MORSE, Secretary

WM. B. MORSE LUMBER CO.

WHOLESALE AND RETAIL

Hardwood and Softwood Lumber Sash, Doors and Trim

All Types of Insulation and Accoustical Materials
 Gypsum and Fibre Boards — Morsetile and Genuine Presdwood

We carry a full line of
 Bay State Paints, Enamels and Varnishes

BRANCHES

OTIS LUMBER CO.

936 EAST MAIN ST.
 Tel. Monroe 44

WM. B. MORSE & SONS.

340 MAIN ST. WEST
 Tel. Main 160

NORTH END BRANCH

Thomas Ave. near Stutson St. Bridge
 Tel. Charlotte 589

MORSE SASH AND DOOR CO.

S. Ford St. cor. Waverly Place
 Tel. Main 1835

Main Office, 340 MAIN STREET WEST, ROCHESTER, N. Y.

GREECE LUMBER COMPANY

DEALERS IN

Coal, Coke, Rough and Dressed Lumber

SHINGLES and INSULATION

Office and Yard

788 RIDGE ROAD WEST - At B. & O. R. R. CROSSING
 TEL. GLENWOOD 2391 ROCHESTER, N. Y.

T. G. SPENCER, Pres.

HARPER SIBLEY, Vice-Pres.

B. E. OSTRANDER, Secy.

HOLLISTER LUMBER COMPANY, Ltd.

Established 1832

WHOLESALE AND RETAIL

Lumber and Coal Interior Woodwork

100 ANDERSON AVE.

Tel. Monroe 1663

ROCHESTER

OTIS LUMBER CO.

BRANCH OF THE W. B. MORSE LUMBER COMPANY

LUMBER

WALLBOARD

PAINTS

INSULATION

OFFICE and YARD
936 EAST MAIN STREETPhones MONROE 43-44
ROCHESTER, N. Y.A. F. STAHL
Pres-Treas.M. A. STAHL
Vice-Pres.W. F. STRANG
Secretary**ROCHESTER LUMBER COMPANY**

2040 East Avenue

Phone: Monroe 1345

ROCHESTER, N. Y.

STEPHEN ZIELINSKI

Wholesale and Retail Dealer in all Kinds of

Lumber - Interior Trim

Hardware, Paints and Building Materials

Phone STONE 2603

1115 HUDSON AVENUE - - - ROCHESTER, N. Y.

**VAN DE VISSÉ & KILDEA
LUMBER Co., INC.***LUMBER**Building Materials*Office and Yard
1503 LYELL AVENUEPhone
Glenwood 668

ROCHESTER, N. Y.

Machinery and Tools

Telephone *GENESEE* 92

**THE AMERICAN LAUNDRY
MACHINERY COMPANY**

MANUFACTURERS OF

*Laundry, Dry Cleaning
and Rug Cleaning
Machinery*

IRON FOUNDERS

Manufacturers of Meehanite Metal



OFFICE and FACTORY

110 BUFFALO ROAD between N. Y. C. R. R. and Glide St.

ASHLEY MACHINE WORKS, Inc.
ROCHESTER, N. Y.

CONTRACT MACHINE WORK IN ALL BRANCHES

*Machine Designers
Machine Parts*

*Screw Machine Products
Builders of Machinery*

Office and Factory, 714 UNIVERSITY AVENUE

Phone MONROE 99

DAVENPORT MACHINE TOOL CO.

INCORPORATED

Manufacturers of

The Davenport 5-Spindle Automatic Screw Machine

Capacity— $\frac{1}{2}$ " diam. x 2" long.

$\frac{5}{8}$ " diam. with Oversize Feed Tubes

Maximum production and accuracy guaranteed on all work within its capacity

167 AMES STREET

Tel. Genesee 3162

ROCHESTER, N. Y.

PATCHEN & HOEFLER

Phone 4154 MAIN

MACHINISTS

Repairing printing machinery. Machine jobbers of all kinds. Knives ground for planers, squaring shears, paper cutters, etc. Estimates furnished on all kinds of machinery. Punches and dies of all kinds for sheet metal workers, metal patterns, model making, etc. Also stamping.

40 AQUEDUCT STREET

PHONE MAIN 4154

A. W. FROMEN, President

MANUFACTURERS TOOL & DIE CO., Inc.

Makers of

TOOLS .. DIES .. FIXTURES

Special Machinery, Stampings and
Experimental Machine Work

Phone MAIN 6149

24 VERONA STREET

ROCHESTER, N. Y.

ROCHESTER IRON & METAL CO., Inc.

325 ST. PAUL STREET

237 MT. READ BOULEVARD

SCRAP IRON - PLUMBERS LEAD - SCRAP METALS

NEW AND SECOND HAND RAILS, PIPE, I BEAMS,
REINFORCING BARS

SECOND HAND MACHINERY, FACTORY EQUIPMENT
AND OFFICE EQUIPMENT

Phone MAIN 464

ROCHESTER, N. Y.

ROCHESTER LEAD WORKS, INC.*Manufacturers of and Dealers in***STAR ★ BRAND**

LINOTYPE

INTERTYPE

MONOTYPE

STEREOTYPE

ELECTROTYPE

Lead Pipe, Solder and Babbitt Metal

COMBINATION FERRULES, LEAD TRAPS and BENDS

Tin-Lined and Pure Tin Pipe, Wedge Strip for Setting Granite

Pig Lead, Pig Tin, Sash Weights, Sheet Lead, etc.

WIRE SOLDER A SPECIALTY

Phones MAIN 1154-1155

380 and 382 EXCHANGE STREET

ROCHESTER, N. Y.

The Sidney B. Roby Company

Iron and Steel—Mill Supplies

Bicycle and Automobile Supplies

Sole Distributors

Pratt and Lambert Paint and Varnish

Wooster Brushes

Painters' Supplies and Equipment

SECURITY ROLL ROOFING, ASPHALT SHINGLES AND ROOF COATINGS

Telephones: STONE 1129-1130-1131-1132

208-214 SOUTH AVENUE - - ROCHESTER, N. Y.



⊗ MONUMENTS ⊗
 MAUSOLEUMS
TROTT BROS. CO
 INC
 54TH YEAR . . . MONROE 73
 1120 MT HOPE AVE AT STEWART

AN OPPORTUNITY

To advertise your business in detail where people will be sure to see it, when they want to Buy or Sell Goods or Services.

The City Directory

Consulted by the Public in Libraries or Best Business Houses of the Country.

LELAND · WESTON · LOWE · CO.

BUSINESS ESTABLISHED IN 1831
 MANUFACTURERS OF DISTINCTIVE DESIGNS
 PRELIMINARY SKETCHES AND ESTIMATES
 SUBMITTED WITHOUT OBLIGATION



MONUMENTS GARDEN FURNITURE
 BAPTISMAL FONTS
 SUN DIALS
 BRONZE TABLETS **MAUSOLEUMS**

Studios at
 1132-1138 Mt. Hope Avenue
 Opposite south entrance to
 Mount Hope Cemetery *LD*



JOHN H. MCGEE & SON

Monuments and Headstones

**508 STATE STREET
 ROCHESTER, N. Y.**

Main 854

**T. H. MARRION & CO.
 MONUMENTS
 MAUSOLEUMS**

Phone MAIN 7522

**476 STATE STREET, Cor. Vincent St. So.
 ROCHESTER, N. Y.**



THE WORLD'S BEST MUSICAL MERCHANDISE

Pianos — Phonographs — Records — Musical Instruments
 Radio — Sheet Music — Skilled Repair Department, Etc.

Convenient Payments

Your present instruments taken in trade

WHEN YOUR WANTS ARE MUSICAL COME TO



HOME OF THE STEINWAY PIANO

PHONE MAIN 158

Largest Newspaper Publishers in Rochester

LEDGER PUBLISHING CO.

464-482 ST. PAUL ST.

PHONE MAIN 4420

*Where Your Advertising Dollar attracts the Greatest
 Purchasing Power*

ROCHESTER'S GERMAN DAILY

ABENDPOST

is an evening daily newspaper delivered directly into the homes
 in all sections of the city and suburbs. It is a

HOME NEWSPAPER

carefully read by the large German population of Rochester
 and surrounding towns.

Abendpost Building, 237—239 Andrews St.

Stone 278

Backed by

4 DIMENSIONS

*... your advertising message
 is more effective in the*

- AUSPICES
- CHARACTER
- INFLUENCE
- CIRCULATION



Newspaper of the Rochester Diocese

50 CHESTNUT ST. ●

STONE 1136-1137 ●

ROCHESTER, N. Y.

You Cannot Sell

Your merchandise through newspaper advertising in homes where the newspaper you are using does not go.

That is why successful, growing, money-making stores use the Democrat and Chronicle.

To make money from your advertising, *demand* detailed A. B. C. Audit circulation figures from your newspapers and use the newspapers which can carry your selling messages into homes of a class that have the most money to spend with you. Remember, that every 5,000 average homes in New York State spend \$14,534, 500.00 each year.*

Democrat  **Chronicle.**

Rochester's Morning Gannett Newspaper

* According to 1934 Survey

**Your
Best
Bet**

*In Rochester, nearly
every family reads
THE TIMES UNION*

No Campaign is Complete unless you include Rochester's only Evening Newspaper.

ROCHESTER TIMES-UNION

BROWN BROTHERS COMPANY
CONTINENTAL NURSERIES

Established 1885

*Growers of a Complete Line of Dependable Nursery
Stock for the World Out of Doors*

RETAIL — LANDSCAPE SERVICE — WHOLESALE

Retail Offices and Landscape Dept., 891 Garson Avenue
Packing Cellars, 760 Merchants Road
Penfield Farms, Atlantic Ave. & Scribner Road

Phone Culver 785
Phone Culver 5
Culver 5224-J

Chase Brothers Company

“Rochester’s Pioneer Nurserymen”

Growers of a Complete Line of Trees, Shrubs, Roses, Hardy Plants, Etc.

Big Shade Trees—20 to 30 Feet High

Expert Landscape Service

Retail Stores, 2045 EAST AVENUE - Telephone MONROE 1166
Landscape Dept., 2045 EAST AVE. - Telephone MONROE 1168

“We Furnish The Home-Outdoors”

GLEN BROTHERS, INC.

GLENWOOD NURSERY

1866 — 72nd. Year — 1938

NURSERYMEN - - - LANDSCAPE DEVELOPERS

Consultation - Design - Construction - Maintenance - Planting

Office, Landscape Department, Warehouse - - - - - 1762-1772 MAIN ST. EAST

Nursery, Wholesale Department, FAIRPORT, N. Y.

Nursery is opened daily except Sundays for the accommodation of visitors between the hours of 9 and 4

Catalogue and Landscape Folder Free Upon Request

Office CULVER 1854 — TELEPHONES — Nursery, FAIRPORT 927-F-12

**CROWN RIBBON AND CARBON
MANUFACTURING CO.**

MANUFACTURERS OF HIGH GRADE

Inked Ribbons and Carbon Papers

782-790 ST. PAUL STREET ROCHESTER, N. Y., U. S. A.
Phone MAIN 6840

<p>1915</p>  <p>ORIGINAL</p>	<p>JOHNSTON'S</p> <div style="border: 2px solid black; padding: 5px; font-size: 2em; font-family: cursive;">Snow White</div> <p>PRODUCTS</p> <p>Manufactured by</p>	<p>1938</p>  <p>STANDARD</p>
<div style="border: 1px solid black; padding: 2px; font-family: cursive;">Snow White</div> <p>Water Color Ink Air Brush Spray Rubber Stamp Ink  Water Color Paints</p>	<div style="border: 2px solid black; padding: 5px; font-weight: bold;">JOHN WHITE JOHNSTON</div>	<div style="border: 1px solid black; padding: 2px; font-family: cursive;">Snow White</div> <p>Cleaner for very Many Household, Store and Office Cleaning Purposes </p>
145 ST. PAUL STREET	SIEBERT BUILDING	ROCHESTER, N. Y.

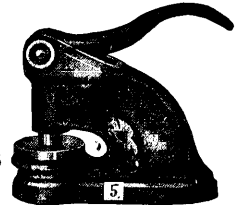
JOHN R. BOURNE

*Desks - Chairs - Safes
Files*

Stationery and Office Supplies
Corporation Supplies



**Rubber Stamps — Stencils
Steel Stamps**



131-133 STATE STREET

PHONES MAIN 1233—1234

GAR WOOD INDUSTRIES, INC.

FACTORY BRANCH

Engineers and Specialists in

AIR CONDITIONING

OIL HEATING - - OIL BURNERS

The Latest and Best Developments in Installations

Complete Engineering Installation and Service

PHONE STONE 3612

16 NORTH UNION STREET

ROCHESTER, N. Y.

The Merchants

WHO ADVERTISE IN THE DIRECTORY

are the up-to-date, wide-awake people of the community.

*Read their advertisements—you may
find therein*

SOMETHING YOU NEED

The Eyes of the World - - -

For almost a century Bausch & Lomb has been famous as America's leading manufacturer of eyeglass lenses and frames, microscopes, projection apparatus, binoculars and other scientific and optical instruments. Be sure that you enjoy Bausch & Lomb quality in the glasses that you wear.

**BAUSCH & LOMB
OPTICAL COMPANY**

635 ST. PAUL ST. ROCHESTER, N. Y.

PROJECTION OPTICS CO., Inc.

Manufacturers of

High Grade Projection, Stereopticon and Sound Lenses

MOTION PICTURE SUPPLIES

Orders Taken for All Special Optical Work

Phone Glenwood 3993

Offices and Factory, 330 LYELL AVE.

ROCHESTER, N. Y.

This Buyers' Guide Contains

the advertisements and business references of the more progressive business men and firms in the city, classified according to lines of business.

Consult it for your Needs!

W. C. REMINGTON

R. J. FOWLER

Barnard, Porter & Remington

ESTABLISHED 1854

*Wholesale and Retail Dealers in***PAINTS, OILS, GLASS,
BRUSHES, VARNISHES****ARTISTS' MATERIALS DRAWING SUPPLIES
PAINT SPRAY APPARATUS***Distributors for LOWE BROS. High Standard Paints*

Phones MAIN 8140—8141—8142

9, 11, 13 NORTH WATER ST., ROCHESTER, N. Y.***THE SHERWIN-WILLIAMS Co.*****The Cover-the-Earth Trade-
Mark is the World's Greatest
Guarantee of Paint Quality.****Imperial Washable
Wallpapers—****FREE PARKING***Shades and Venetian Blinds*

MAIN 1517

53 STATE STREET**ROCHESTER, N. Y.****SULLIVAN'S COAL & COKE CO.**

'blue coal'

R. G. & E. Co. Coke

**PITTSBURGH PAINT PRODUCTS***Smooth as Glass*

PAINTS

VARNISHES

ENAMELS

*Prompt Courteous Service**Telephone GLENWOOD 6986***402½ LEXINGTON AVENUE****ROCHESTER, N. Y.**

HUMPHREYS

"The Paint Man"

Benjamin Moore's Dependable Paints

Aristocrat Wall Papers

38 SOUTH AVE.

MAIN 2117

GAMROD-HARMAN CO., INC.

WHOLESALE AND RETAIL

*Paints, Glass, Brushes, Varnishes and
Imperial Washable Wall Papers*

Distributors for McDougall-Butler Paints and Arvon Plastic Paints

Window Shades and Venetian Blinds

PHONES MAIN 3710-3711

75 EXCHANGE STREET

- -

ROCHESTER, N. Y.

GEORGE I. VIALL & SON

PAINT SUPPLY HOUSE

Wholesale and Retail Dealers in

PAINT, VARNISH, GLASS AND BRUSHES

Distributors of Keystone Varnish Companies Products

MAIN 733

5-7 NORTH WATER STREET

ROCHESTER, N. Y.

F. P. VAN HOESEN CO., Inc.

*PAINTS-WALL PAPER-WINDOW SHADES
VENETIAN BLINDS*

Phone STONE 473

41 ST. PAUL ST., Corner Mortimer St.

- ROCHESTER, N. Y.

HUBBS & HASTINGS PAPER CO.

Wrapping Papers and Twines
Roofing Materials of All Kinds
Paper Bags

319-325 MAIN STREET WEST

ROCHESTER, N. Y.

TELEPHONES MAIN 6702, 6703 and 6704

CLARK STEK-O CORPORATION*Manufacturers of***STEK-O**
Adhesives

including STEK-O, TIK and other Powder Pastes and
 Liquid Vegetable Glues

Telephone GLENWOOD 1014

1631 DEWEY AVENUE

ROCHESTER, N. Y.

FLOWER CITY SPECIALTY COMPANY*Manufacturers of*

Set-Up Paper Boxes
 Transparent Paper Boxes
 Display Boxes and Paper
 Specialties

Phones: MAIN 629 and 630

Paper Box Division
 158 HOLLENBECK ST.

Self-Closing Monkey Links

Monkloth and other
 Automotive Specialties

Phone: MAIN 433

Automotive Division
 250 MILL STREET



Give your business a chance. Display it
 in your city directory under headings
 describing your different lines. They will
 bring you increased sales at less expense
 than any other salesman in your employ.

CORBETT-STEEVES PATTERN WORKS



$\frac{1}{4}$, $\frac{1}{2}$, $\frac{3}{4}$ sharp gothic $\frac{1}{4}$, and $\frac{1}{2}$ in. brand.

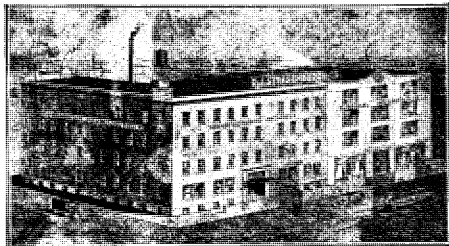
PATTERN LETTERS



LEATHER FILLETS

Pattern and Model Makers

55 ALLEN STREET - - TELEPHONE MAIN 5730



185-195 EXCHANGE STREET - - Phone MAIN 669

PHARMACEUTICAL CHEMISTS

*Manufacturers of Standardized
Pharmaceuticals*

Physician and Sick Room
Supplies also First Aid
Requirements

R. J. STRASENBURGH CO.

Phone MAIN 669

THE HURST ENGRAVING COMPANY, Inc.

Photo Engraving

DESIGNING RETOUCHING

Phone MAIN 4605

143 ANDREWS STREET ROCHESTER, N. Y.

HALF TONES — ZINC ETCHINGS
COLOR PROCESS PLATES
NICKEL AND COPPER ELECTROS
LEAD MOULDS
MATS AND STEREOS



ROCHESTER ELECTROTYPE & ENGRAVING CO.

170 NORTH WATER STREET - - MAIN 1040

ORIENTAL RUGS

ETCHINGS

GEORGE C. J. BAILEY ART SHOP

Dealer in ANTIQUES APPRAISERS

English Silver—Antique and Modern
Brown's Shamrock Linens from Ireland

Pictures and Frames, Oil Paintings Cleaned and Restored, Re-Gilding, Etc.

Silverware Repaired and Replated

150 CLARISSA ST. Cor. Broad St. W. - Telephone MAIN 2196

R. B. OLVER

Phones MAIN 5560—5561

G. F. HOLTZ

G O L D	<p>STUART-OLVER-HOLTZ CO.</p> <p><i>Plating, Enameling and Metal Spinning</i></p> <p>LACQUERING</p> <p>Manufacturers of Metal Specialties</p>	S I L V E R
------------------	--	----------------------------

406 PLATT ST. COR. ALLEN

ROCHESTER, N. Y.

HOWE & BASSETT CO., Inc.

Established 1885

Plumbing and Heating Contractors

Supplies and Equipment

“RUUD” Automatic Gas Water Heaters

“PERMUTIT” Water Softeners

Automatic Gas and Oil Appliances

840-50 UNIVERSITY AVENUE

TELEPHONE MONROE 3

**WRIGHT & ALEXANDER CO.
..CONTRACTORS..**

Heating, Plumbing and Power Plant Installations Jobbers of Supplies

Sprinkler Installation Contractors

Chemical Fire Extinguishers and Supplies

OIL BURNERS

WRIALCO CONCRETE INSERTS

Telephones: Main 1056—6828

21-23 OTSEGO STREET

..

ROCHESTER, N. Y.

Plumbers and Supplies

Supplies For } **PLUMBERS, STEAMFITTERS, TINNERS
ENGINEERS and FACTORIES**

Distributors of TROJAN PLUMBING FIXTURES

W. A. CASE & SON MFG. CO.

72-90 ST. PAUL STREET

Phones Main 3404—3405—3406

William E. Sloan

Daniel L. VanHee

William E. Sloan, Jr.

ESTABLISHED 1860



TELEPHONE MAIN 540

When contemplating building, visit our Show Room display for your selection of fine

PLUMBING and HEATING EQUIPMENT

SAMUEL SLOAN & COMPANY

Wholesalers Plumbing and Heating Supplies

67-69-71 EXCHANGE STREET - - ROCHESTER, N. Y.

BARR & CREELMAN

Plumbing & Heating Engineers & Contractors

We Are At Your Service For The Small Job
As Well As The Large One

See Us For Your Plumbing and Heating Requirements

For over 56 YEARS we have served the Rochester area in Plumbing and Heating needs

74 EXCHANGE STREET

Phones MAIN 6465-66-67

Bareham & McFarland, Inc.

PLUMBING, HEATING and POWER PLANT INSTALLATION

— CONTRACTORS —

CARBONDALE
REFRIGERATING and AIR CONDITIONING
APPARATUS

KLEEN-HEET and PRECISION
OIL BURNERS

136 North Street - Opposite Andrews - Main 4313

Pork Products

Power Plant Equip.

Printers

141

ARPEAKO

Hams, Bacon, Daisies,
Fresh Pork

51 SAUSAGE PRODUCTS



ROCHESTER PACKING CO., Inc.

900 MAPLE STREET

Phone: Genesee 5200

ROCHESTER, N. Y.

THE STONE COMPANY

ROY L. STONE, M. E., President

Power Plant and Industrial Equipment

Direct and Exclusive Representatives of
Manufacturers of National Reputation

Phone MAIN 5483

426 COMMERCE BUILDING

CATALOGUE BUILDERS • PROCESS COLOR PRINTERS • SCHOOL ANNUALS

**THE
DU BOIS
PRESS**
Creators and Designers of
**DIRECT MAIL
ADVERTISING**



Alert advertisers are now demanding catalogues that are more than a mere listing of their products; they want books that are *sales forces*—that present the same well-planned sales arguments that the star salesman uses. We are serving a large clientele with this effective type of sales medium; and we can be of help to you also.

637 BROADWAY • Phones: Monroe 6755-6756 • ROCHESTER, N. Y.

THE SIMONDS PRESS

Printers and Engravers

Telephone MAIN 3456

49 SOUTH AVENUE - - ROCHESTER, NEW YORK

LIST OF OUR PUBLICATIONS**PRICES UPON APPLICATION****Massachusetts**

Attleboro and N. Attleboro
 Boston
 Boston Blue Book
 Fall River
 Gloucester and Rockport†
 Lawrence
 Lowell
 Lynn
 Malden*
 Newburyport and Amesbury†
 Newton†
 Taunton
 Waltham†
 Worcester
 Worcester House

New Hampshire

Manchester

New York

Albany and Rensselaer
 Auburn
 Oswego*
 Rochester
 Rochester Suburban
 Syracuse
 Troy, Cohoes, Waterford, Watervliet
 and Green Island

Rhode Island

Cranston*
 East Providence†
 Jamestown and New Shoreham†
 Newport
 Pawtucket
 Providence
 Westerly*
 Woonsocket

*Denotes books issued in odd years.

†Denotes books issued in even years.

All books with the exception of the Boston Blue Book
 and Worcester House Directory give Wives' Names.

All books with the exception of the Boston Blue Book,
 Jamestown and Worcester give Property Owners.

Latest Directories of all Cities for Sale at publishers' prices

SAMPSON & MURDOCK CO., Inc.

179 LINCOLN STREET

-

BOSTON, MASS.

*There is Nothing Finer Than A
Stromberg - Carlson*

STROMBERG-CARLSON TELEPHONE MFG. CO.
100 CARLSON ROAD, ROCHESTER, N. Y.

Stromberg-Carlson



PHILCO

HOME and
AUTO
RADIOS

*Tubes—Batteries—Replacement Parts—Expert Radio Service
Complete Public Address Systems—Radio Parts for Amateurs*

LEONARD ELECTRIC REFRIGERATION

BEAUCAIRE, Inc.

228-230 BROADWAY - - PHONES STONE 5694-5695-5696

ALHART ELECTRICAL CO., Inc.

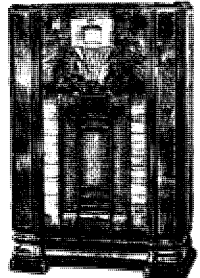
AUTHORIZED DEALERS

Stromberg-Carlson Radios

There Is Nothing Finer

TELEPHONE CULVER 3944

1149 CULVER ROAD - - ROCHESTER, N. Y.



TELL BUYERS

What you do and how you do it. Your Business represented in this book will carry your sales talk into offices, factories, hotels and others in all the principal cities in this country and Canada. We have over 14,000 pleased patrons who are taking advantage of this Silent Salesman.

SAMPSON & MURDOCK CO., INC.

179 LINCOLN STREET - - BOSTON, MASS.

Real Estate

NORBERT STREB CO.

Realtors

..REAL ESTATE..

Bought .. Developed .. Financed .. Managed
Rented .. Sold

223 POWERS BLDG.

Main 4579

Sales—Rentals—New Homes and Home Sites—Property Management

PAUL E. EMERSON CO.

REALTORS

6 CLINTON AVE. SO. - - - STONE 822

ROCHESTER REAL ESTATE HEADQUARTERS

“REALTY HOUSE”

Sales, Rentals, Property Management
and First Mortgage Loans

**MAIN
250**

C. E. McINTOSH CORP.

**MAIN
251**

For your convenience now located on the ground floor

Monroe Building

23 EXCHANGE ST.

Rochester, N. Y.

Leases
Home Building
Residential Sales
Insurance



FRANK A. DRUMM, President

Mortgage Money
Appraisals
Management of
Property
Industrial Sites

1014 Lincoln-Alliance Bank Building, Main at Stone Sts.

Phone STONE 633

Sundays and Evenings Charlotte 334

HENRY T. PERKINS REAL ESTATE CO.

PROPERTY MANAGEMENT

SALES — RENTALS — LEASES

31 EXCHANGE STREET

Phones Main 3309-10-11

Real Estate All Branches

SINCE 1913

MAIN
6140



MAIN
6141

Suite 225 CUTLER BUILDING

42 EAST AVENUE

ROCHESTER, N. Y.

PROPERTY MANAGEMENT

FARMS AND SUBURBAN PROPERTY

SALES
—
EXCHANGES
—
RENTALS



LEASES
—
MORTGAGE
LOANS

25 YEARS OF DEPENDABLE SERVICE

CONSULT US FIRST — HOME BUILDERS — LET US ESTIMATE

RENTALS
SALES
LEASES

P O M E R O Y

ORGANIZATION, INC.

MORTGAGES
PROPERTY
MANAGEMENT

REALTORS

"A Complete Real Estate Institution"

118 POWERS BUILDING, ROCHESTER

MAIN 1376

Syracuse Office, 442 S. WARREN ST.

Phone 2-0277

RENTALS

SALES

HERBERT J. BIETRY*Realtor*

1216 Lincoln-Alliance Bank Building, Rochester, N. Y.

*Expert Service, Rent Collections and Property Management***HARRY M. KING***Realtor*

PROPERTY MANAGEMENT

Sales and Rentals

Phone MAIN 3162

1331 LINCOLN-ALLIANCE BANK BUILDING

C. H. MORSE & SON*Air Cushion Rubber Stamps*

Stencil Cutting Machines

Numbering Machines

Seal Presses and Badges



21 NO. WATER STREET

PHONE MAIN 1291

When people want to buy

They look in the Directory to Find where to Buy.

If your Name is in Heavy Type under the proper Headings and *Explain Clearly* in this Section of the Book what you sell, you get the Business.

Schools**Seedsman****Sheet Metal Goods****147****THE SCHOOL OF COMMERCE****362 EAST AVENUE, ROCHESTER****ADVANCED COURSES****IN****BUSINESS EDUCATION****Special Medical Secretarial Courses****ALL TWO YEAR COURSES REGISTERED WITH THE DEPARTMENT
OF EDUCATION OF THE STATE OF NEW YORK****Ask For Information****Call MAIN 5530 or 5531****CHAS. H. VICK**
President**H. L. GLEN**
Vice-Pres.**GEO. B. HART**
Sec. and Treas.**HART & VICK, INC.**

ONE OF AMERICA'S FINEST SEED STORES

Seedsman and Plantsman

QUALITY EXCLUSIVELY

MAIN 1201

Corner **STONE** and **ELY** STREETS**ROCHESTER, N. Y.****ERDLER PERFORATING COMPANY**

MANUFACTURERS OF

PERFORATED SHEET METALS

Metal Sample Plate Furnished on Application

Prompt service, Large stock of Sheet Metal always on hand

Send Specifications for Prices

*Telephone Genesee 2608***Office and Factory, 171 YORK ST.****ROCHESTER, N. Y.**

This Directory may be found in libraries in all the principal cities in the United States and Canada.

Your Directory Library is located at the Public Library, 115 South Avenue.

Consult it for Your Needs

KNOWLES & PECK CO., Inc.

Tin, Copper and Architectural Galvanized Iron Works,
Slate, Tile, Tin, Slag and Ready Roofing

BARRETT'S BONDED ROOFS

General Jobbing

Estimates Furnished on Application

131 GOULD STREET

..

ROCHESTER, N. Y.

Office Phone: MONROE 5522

Call - FLESCH & SCHMITT, Inc. - Main 5234*for***ROOFING** Copper—Tin—Tile—Slate—Slag
and Asphalt. Waterproofing**SHEET METAL MANUFACTURING**

Cut, Form, and Weld Metals up to 3/16" thick, 12' long

*The Design and Fabrication of Ventilating Systems, Skylights, Tanks, Stacks,
and Metal Products*

MAIN 5234

60 BROWN STREET

ROCHESTER, N. Y.

VON BUREN SHEET METAL WORKS***Tinsmithing and Sheet Metal Work***

Roofing and Asbestos Siding

Furnace Installation and Repairing

We Use the Vacuum System for Furnace Cleaning

Telephone STONE 4710

255 FURLONG STREET

-

-

ROCHESTER, N. Y.

RICHARDSON CORPORATION*Manufacturers of*

"Maid of Honor" Syrups
Crushed Fruits and Sundaes
for Soda Fountains

Ice Cream Fruits and Flavors

Glace Fruits and Bakers' Supplies

Liberty Fruit Drinks

Richardson Root Beer and
Fruit Drink Dispensing Equipment

Reddy Chocolate Syrups
and Powder

*Telephones—Glenwood 307, 308, 309**After 5 P. M., Saturday Afternoons, Sundays and Holidays call Glenwood 307*

1069 LYELL AVENUE

-

-

ROCHESTER, N. Y.

Soda Fountain Supplies—Steam, Mill Supplies—Steel & Iron 149

J. HUNGERFORD SMITH CO.

Manufacturers of

*Soda Fountain Fruits and Flavors
and*

CREAM PAK Ice Cream Specialties

410 NO. GOODMAN STREET - ROCHESTER, N. Y.

Telephones Culver 157-158-159

HAVERSTICK & CO., Inc.

*Engineering and Industrial
Supplies and Equipment*

Golf Course, Estate and Park Equipment

45-49 FORD STREET

PHONES MAIN 70-71-72-73

BARR & CREELMAN MILL & PLUMBING SUPPLY CO.

*Mill, Steam, Plumbing,
Contractors Supplies*

224 MAIN STREET, WEST

- Phones MAIN 6465-66-67

YOUNG'S WROUGHT IRON W'KS.

*Ornamental Steel, Bronze,
Iron and Aluminum for Buildings*

Stairs, Fire Escapes, Railings, Picket Fences, Flag Poles, Pipe Railings,
Cellar Doors, Rods, Bolts, Scaffold Brackets, Forgings, Plate-Work,
Grilles, Trench Covers, Coal Holes, Joist Hangers, Postcaps.

39 SOUTH WATER STREET

Established 1884

MAIN 1755

F. L. HEUGHES & CO., Inc.

Members of The American Institute of Steel Construction

ENGINEERS, DESIGNERS AND FABRICATORS OF
**STRUCTURAL STEEL AND IRON WORK
 FOR BUILDINGS, BRIDGES, ETC.**

**ELECTRIC WELDED STEEL TANKS,
 STACKS, VATS AND KETTLES**

ALL STRUCTURAL SHAPES AND REINFORCING BARS CARRIED IN STOCK

Phone or Write for Catalog

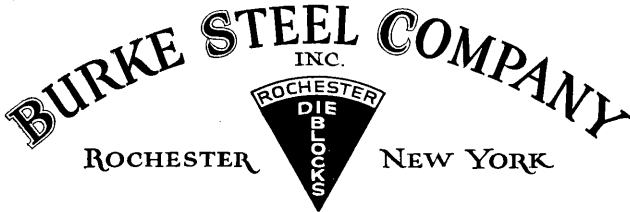
COMPLETE WAREHOUSE STOCK

Office and Works

1029 LYELL AVENUE

Phones Glenwood 590—591

Steels



Sheets

ELECTRICAL SUPPLIES
 TOOLS

P. O. BOX 514

BLACKSMITH SUPPLIES
 PIPE

Forging Specialists

30 SHERER STREET

- - -

GENESEE 196-197-198

COOK IRON STORE CO.

Iron, Steel and Heavy Hardware

Supplies For

BLACKSMITHS, CONTRACTORS, PAINTERS
 GARAGES AND FACTORIES

120-128 ST. PAUL STREET

Tels. MAIN 5188-5189

**GENERAL MERCHANDISE
STORAGE and REFORWARDING**

Established 1902

**The Upton Cold Storage Co.
INC.**

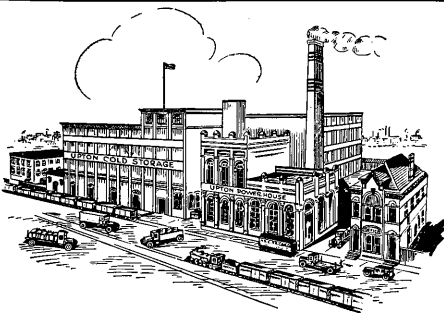
Cooler and Sharp Freezer Service
For All Food Products
FIRE PROOF BUILDINGS LOWEST INSURANCE

Storage in Transit

Route All Cars

N. Y. C. LINES, STATE ST. DELIVERY
38 CLIFF ST. - ROCHESTER, N. Y.

MAIN 1494



**ROCHESTER SHOW CASE WORKS, Est. 1853
STORANDT INDUSTRIES, Inc., Est. 1891**

Manufacturers of

SHOW-CASES (Diamond Cushion Cemented)
STORE FIXTURES AND BOOTHS
LABORATORY FURNITURE

OPEN DISPLAY SECTIONAL WALL UNITS FOR DRUG STORES

404 PLATT STREET, Corner ALLEN

Telephone Main 5750

PARTY LINE TELEPHONE RULES

When making a telephone call, remove the receiver and listen. If the line is in use, replace the receiver immediately and wait for a few minutes before trying again.

The length of a conversation should in no case exceed five minutes, and you are requested to make it as brief as possible. Allow an interval of a few minutes to elapse before calling another party, as someone on your line may be waiting to make an emergency call.

Do not tolerate anyone to listen at your telephone when the line is in use.

ROCHESTER TELEPHONE CORPORATION

LOCATED on West Avenue, three blocks from Genesee Street, Taylor Instrument Companies is the world's largest manufacturer of temperature instruments. Here Rochester workers make thermometers, barometers, gauges, compasses and hundreds of other instruments that are included in the well-known Taylor and Tycos line of products. We are always ready to serve your needs whenever you require accurate, dependable equipment for your home, your office or your factory.

Taylor Instrument Companies

WEST AVENUE and AMES ST., ROCHESTER, N. Y.

SERVING INDUSTRY — THE PROFESSIONS — AND THE HOME

152—168

Trucking

Weavers (Repairs)

Wire Work

MOTOR VANS for LOCAL and LONG DISTANCE MOVING

**CLANCY
CARTING & STORAGE CO., Inc.**
(SERVICE SINCE 1885)

Furniture, Freight — **MOVERS** — Pianos, Baggage
STORAGE WAREHOUSE

Residence
111 PARSELLS AVENUE
CULVER 2014

Office and Warehouse
3-5-7-9-11 GRAND AVENUE
CULVER 1714

**HOLES-CUTS-TEARS
BURNS**

REWOVEN LIKE NEW



DAMAGED



ESTABLISHED 1920



REWOVEN

French Textile Co.

428 AVENUE A

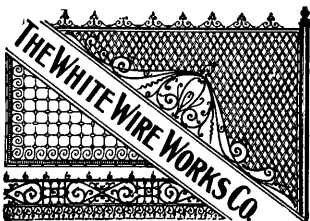
NEAR 1028 CLINTON AVENUE, NORTH

Bring In Garments for Estimates

This Directory

represents Rochester in Directory libraries and big business houses in principal cities throughout the United States and Canada, as a catalog of this city's manufacturing and mercantile activities. See to it that it properly and completely

Represents You



Manufacturers of

Brass, Iron and Wire Work

OF ALL KINDS

Sheet Brass, Rod, Tubing, Etc.

79-83 Exchange Street

Rochester

Phones Main 274—275