

ROCHESTER DIRECTORY

REFERENCE DEPARTMENT

Where more information than is possible to give under the classified listings is placed on file for buyers reference. The value of this department is inestimable. It is an index of the best business interests of the city, and stands for them and the city in reference libraries all over the country, as well as on the desks of progressive business men. It is accessible to everybody, and the logical place to look for specific information.

MONROE ABSTRACT CORPORATION

Abstracts of Title

Title Insurance Policies Federal Court Searches

Titles Insured Through New York Title Insurance Company

Main at Fitzhugh Street

ROCHESTER SAVINGS BANK BUILDING, ROCHESTER, N. Y.

TELEPHONES MAIN 3441—3442

BURR & STARKWEATHER COMPANY

**Farm, Dairy, Poultry and Contractors' Supplies
Fertilizers and Seeds — Farm and Garden Tractors**

BINDER TWINE, POWER AND HAND LAWN MOWERS

Dexter Washing Machines - Beacon Poultry Feeds

Distributors of PYROFAX GAS for Gasless Homes

Magic Chef, Glenwood Ranges

PHONE: STONE 3016-3017

39-57 MT. HOPE AVENUE

ROCHESTER, N. Y.

POWER OF ADVERTISING

The **City Directory** is the power that generates information for the buyer that he may know who deals in the product he wishes to purchase. If your business is not classified properly, and a display advertisement arranged to describe your business, how can you expect the buyer to trade with you.

ADVERTISING is the foundation upon which successful businesses are built. You must apply this to your own particular business.

ADVERTISING is the power of an idea multiplied.

Rates Upon Application

OUR SERVICE CANNOT BE EXCELLED

SAMPSON & MURDOCK CO., INC.

179 LINCOLN STREET

- - -

BOSTON, MASS.

Please mention this Directory when dealing with Advertisers

“BUILT BY HUDSON” MOTOR CARS
TERRAPLANE HUDSON

Members
 N. A. D. A.
 R. A. D. A.

ALLING & MILES
 INCORPORATED
 82 STONE STREET

Telephone
 STONE 2537

DISTRIBUTORS FOR 25 YEARS

COOL CHEVROLET CORP.

for Economical Transportation

*Passenger
 Cars*



*Delivery
 Trucks*

Always a fine stock of **GUARANTEED USED CARS.**
 A modern **SERVICE DEPT—FLAT RATE CHARGES.**
SKILLED MECHANICS and FACTORY EQUIPMENT
 is your **SERVICE GUARANTEE**

360 CULVER ROAD

..

Phone MONROE 2340

ROCHESTER MOTORS, Inc.

Distributors

STUDEBAKER MOTORS CARS

Sales and Service



77-87 MONROE AVENUE

ROCHESTER, NEW YORK

Telephone STONE 3030

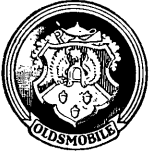
Service Station, 54 HOWELL STREET

ADVERTISE IN THE CITY DIRECTORY
 The only COMPLETE Guide to the City
 IN USE BY THE
 GENERAL PUBLIC 365 Days
 IN THE YEAR

SAMPSON & MURDOCK CO., Inc.

“Directory Publishers Since 1846”

FINCHER MOTORS, INC.



Distributors
OLDSMOBILE and
CHEVROLET
MOTOR CARS

for Economical Transportation



Salesroom and Service Station

14-28 SOUTH UNION STREET

Phone MAIN 2262

E. J. HORTON, Inc.

Distributors for

Dodge Brothers Cars and Trucks
and
Plymouth Cars

Service That Serves and Saves

Used Cars and Trucks—Greater Values—Lower Prices

1044 UNIVERSITY AVENUE

Telephone Monroe 612

HUPMOBILE ROCHESTER COMPANY, INC.

Distributors

HUPMOBILE
MOTOR CARS

Guaranteed Used Cars

Service

35-37 UNION STREET, SOUTH



Distributors

REO
MOTOR CARS

General Repairing

Skilled Mechanics

PHONE MAIN 446

INVESTIGATE

the possibilities of this book
 as an advertising medium.

IT PAYS

THOMAS J. NORTHWAY, INC.

DISTRIBUTORS FOR

DeSoto and Plymouth Motor Cars

Special Factory Equipment Plus Forty Years Experience will assure you of a satisfactory job and it will be priced in keeping with the times.

100 EXCHANGE STREET - - Phone MAIN 7091

WHITING-BUICK, Inc.*"Distributors Since 1906"*

***Buick Sales
Service***



Used Cars

352 EAST AVENUE - -

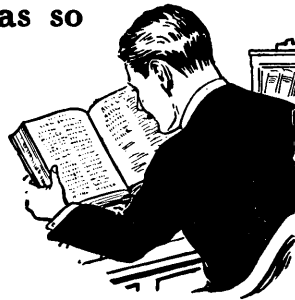
STONE 714

"I had no idea it was so valuable to me"

The name, address, and occupation of every person in the city is in this new City Directory. Order one now. Keep your mailing lists up-to-date and save postage.

Make your delivery service more efficient.

Use it all over your establishment.



***Every Business and Professional Man
Should Own and Consult the***

CITY DIRECTORY

If you have the last issue, you need the new one. It shows over 65 per cent changes which you should know about.

SAMPSON & MURDOCK CO., Inc.

179 LINCOLN STREET - - - - BOSTON, MASS.

Automobiles, Repairs and Supplies

WM. E. BUSH, President

PHONE STONE 4030

W. E. BUSH & CO., Inc.

Automotive Electricians

DISTRIBUTORS

American Bosch, Eisemann Magneto, Scintilla Magneto, Edison Auto Lamps, Owen Dyneto, Splidtdorf Electrical, Schebler, Linkert and Carter Carburetors, Sparton Horns, Whitaker Battery and Ignition Cables, Johns-Manville Brake Lining

36 RICHMOND ST., ROCHESTER, N. Y.

"SISCO" SERVICE

PHONES, STONE 4045-4046

C. L. HARTMANN CORP.

Formerly Starter & Ignition Service Co., Inc.

18-20 N. UNION STREET

Satisfactory Automobile Electric and Radiator Repairs

DELCO BATTERIES

OFFICIAL SALES AND SERVICE STATIONS

Eisemann Magnets
Auto-Light Starters
Shock Absorbers

Delco, Remy & Klaxon
Briggs and Stratton

Bosch Magnets and Ignition
North East Electric
Carburetors

*Complete Units
Parts and Service*

- SPEEDOMETERS
- FUEL PUMPS
- VACUUM TANKS
- OIL FILTERS
- GASOLINE GAUGES
- ENGINE GOVERNORS

GAY'S

Phone
STONE 3542

UNIVERSITY AVE., Cor. N. Union St. - ROCHESTER, N. Y.

*Complete Units
Parts and Service*

- STROMBERG CARBURETORS
- CARTER CARBURETORS
- WINDSHIELD CLEANERS
- WALTHAM CLOCKS
- STANDARD IGNITION
- WILLARD BATTERIES

Exide

BATTERIES

Telephone
GENESEE
3476

No matter what the driving conditions may be, or where you are, you can always depend on an *Exide*. Greater cranking ability than required by the Society of Automotive Engineers is additional assurance that "When it's an *Exide* you start."

WHEN IT'S AN



THE ELECTRIC STORAGE BATTERY CO.

Rochester Branch - - - 642 PLYMOUTH AVENUE., SOUTH

COPR. 1935 BY THE
ELECTRIC STORAGE BATTERY CO.

CALEY & NASH, Inc.

AUTOMOBILE PAINTING AND TRIMMING

BODIES OF SPECIAL DESIGNS

Manufacturers of

VANS AND SCHOOL BUSES

1828 EAST AVENUE

- - -

Phone Monroe 5126

THE SCHLEGEL MFG. CO.

Manufacturers of

AUTOMOBILE, CARRIAGE, CASKET AND DRESS
TRIMMINGS

ALSO TEXTILE APPLIANCES FOR MECHANICAL PURPOSES

277 North Goodman Street, Cor. College Ave., Rochester, N. Y.

PHONES, MONROE 812, 813

To have within reach such a fund of classified information as the Directory contains, is a help to any business man.

Should you wish to know the full name, home or business address, occupation, even the wife's name of any man in the city, the chances are good, you will find it in the Directory.

You can find where to buy and where to sell. How to get anywhere in the city and so many other items of interest, that will make this book well worth the price.

Order the Latest Directory Now

Central Trust Company

ROCHESTER, N. Y.

*Main Office***25 Main Street, East***Brighton Branch***1806 East Avenue***Office Hours: from 9 A.M. to 3 P.M.**Saturdays: Close at 12 M.***Officers:**

WILLIAM PITKIN	Chairman of the Board
JOHN A. MURRAY	President
D. RUSSELL CHAMBERLAIN	Vice-President
LOUIS F. STUPP	Vice-President
THOMAS J. SERCU	Vice-President and Trust Officer
JOHN H. RAUSCH	Asst. Vice-President
HORACE S. JOHNSTON	Asst. Vice-President
F. DWIGHT SAGE	Asst. Vice-President
RICHARD C. MEISENZAHL	Secretary
HOMER D. KLUMPP	Treasurer
CORNELIUS J. KITZEL	Asst. Trust Officer
FRANCIS P. BEATTIE	Asst. Secretary
EDMUND J. MEYER	Auditor

Directors:

ESTEN A. FLETCHER	MORTIMER R. MILLER	LOUIS F. STUPP
EZRA A. HALE	JOHN A. MURRAY	GEORGE S. VAN SCHAICK
FRANTZ HAVERSTICK	JOHN D. PIKE	ALBERT E. VOGT
MAX L. HOLTZ	WILLIAM PITKIN	LOUIS A. WEHLE
	FRANK J. SMITH	

Foreign Drafts Issued on all parts of the world. Letters of Credit and Travelers' Checks available for Foreign Travel. Interest Allowed on Special Deposits. Acts as Executor of Wills, Administrator of Estates, Trustee under corporate and individual trust agreements.

We invite the Accounts of Corporations, Firms and Individuals, and we are prepared to furnish such depositors with business facilities consistent with their balances and standing.

Safe Deposit Boxes for Rent from \$3.00 per year up

MAIN OFFICE OR BRIGHTON BRANCH

NIGHT DEPOSITORY, MAIN OFFICE, 25 MAIN ST. EAST

Member Federal Reserve System

The FIRST NATIONAL BANK

and TRUST COMPANY of ROCHESTER



Capital \$1,000,000

Surplus \$500,000

Officers

THOMAS R. DWYER, *President*
 GEORGE C. LENNOX, *Vice-Pres.*
 HENRY H. STEBBINS, JR., *Vice-Pres.*
 OGDEN BUTLER, *Cashier*
 FRANK C. LEAPER, *Asst. Cashier*
 ROBERT E. TOWEY, *Trust Officer*

Board of Directors

WILLIAM S. ADDISON
President, Addison Lithographing Co.
 THOMAS R. DWYER
President
 LOUIS S. FOULKES
Pres. and Treas. Indian Splint, Inc.
 ALFONSO GIOIA
President, A. Gioia & Bro.
 LYLELL T. HALLETT
Gen. Mgr. Rochester Branch, Beechnut Packing Co.
 ALFRED HART
President, Hart Food Stores, Inc.
 S. RAE HICKOK
President, Hickok Manufacturing Co.
 MEYER JACOBSTEIN
Publisher, Rochester Journal American
 J. HOWARD KIDD
New England Mutual Life Insurance Co.
 GEORGE C. LENNOX
Vice-President
 JOSEPH M. NEISNER
President, Neisner Bros., Inc.
 FRED J. ODENBACH
President, Odenbach Co.
 OTTO R. ROHR
Chairman of the Board Stecher-Traung Lithograph Corporation
 HENRY H. STEBBINS, JR.
Vice-President
 HENRY M. STERN
Michaels, Stern & Co.
 HARRY C. STEVENSON
Pres., Rochester Folding Box Co.

The Only National Bank in Rochester

Forty-Five State Street

Genesee Valley Trust Company

EXCHANGE and BROAD STS.

Free Parking for Customers at 101 Exchange Street



OFFICERS

W. DEWEY CRITTENDEN, *Chairman of the Board*
 ALEXANDER T. SIMPSON.....President
 FRANK S. THOMAS.....Executive Vice-President
 GEORGE E. VARCOE.....Vice-President
 JOHN W. JARDINE.....Vice-President
 JOHN P. DAY,Vice-Pres. & Associate Trust Officer
 STUART C. DEW.....Vice-President
 W. W. STEELE.....Asst. Vice-President
 HOWARD W. MATTHEWS.....Treasurer
 JOSEPH P. COLLINS.....Trust Officer
 T. CHESTER MEISCH.....Secretary
 NORBERT D. GREENE.....Asst. Secretary
 ROBERT C. TAIT.....Asst. Trust Officer

BOARD OF DIRECTORS

WHEELER D. ALLEN
 Vice-Pres. C. P. Ford Co., Inc.
 LEON L. BENHAM,
 President Richardson Corporation
 KENDALL B. CASTLE, Attorney
 Trustee, University of Rochester
 GEORGE B. CAUDLE, President Kelso Laundry
 Director, American Laundry Machinery Co.
 BRACKETT H. CLARK
 Secretary, Cochrane-Bly Company
 GEORGE H. CLARK,
 Trustee, Security Trust
 Director, Eastman Kodak Co
 Treasurer, Mechanics Institute
 W. DEWEY CRITTENDEN, Chairman of The Board
 President and Treas., F. & C. Crittenden Co
 Chairman of Board, Brewster-Crittenden & Co.
 EDWARD J. DOYLE,
 President, Doyle Gasoline and Oil Co., Inc.
 ALBERT V. DURAND
 President Smith-Gormly Co., Inc.
 WILLIAM B. HALE,
 President, Mechanics Savings Bank
 President, Lawyers' Co-operative Publishing Co.
 Trustee, University of Rochester

CARL S. HALLAUER
 Vice-Pres. Bausch & Lomb Optical Co
 Pres., Bausch & Lomb Optical Co., Ltd., Canada
 WALTER L. HEUGHES
 Pres. F. L. Heughes & Co. Inc.
 THOMAS J. NORTHWAY,
 President, Thomas J. Northway, Inc.
 ALEXANDER T. SIMPSON,
 President
 FRANK S. THOMAS
 Executive Vice-President
 KENNETH C. TOWNSON,
 Director Stecher Lithograph Co.
 Director, Sibley, Lindsay & Curr Co.
 JOHN VAN VOORHIS,
 Attorney
 LEWIS S. WEST,
 Vice-Pres. and Gen. Mgr. Merchants Dispatch
 Transportation Co.
 ERNEST C. WHITBECK,
 Attorney
 HENRY T. WILLIAMS,
 Physician
 GEORGE M. WOOD,
 Treasurer, Lawyers Co-operative Publishing Company

TRUST DEPARTMENT SERVICES

In appointing the Genesee Valley Trust Company as your Executor, Trustee or to act in any other fiduciary capacity you are assured of qualifications impossible of attainment by an individual acting in the same capacity.

It has facilities to handle, with speed and accuracy, the many details demanded in this work without delay or loss to interested parties.

We invite you to consult our Officers, which may be done in complete confidence, without the slightest obligation.

SAFE DEPOSIT BOXES IN FIRE AND BURGLAR PROOF VAULTS

MEMBER FEDERAL RESERVE SYSTEM

LINCOLN-ALLIANCE

BANK AND TRUST COMPANY

Main Office, 183 MAIN ST. E.

Lincoln Office, 33 Exchange St.

Lake Ave. Office, 1495 Lake Avenue

West End Office, 886 Main St. W.

East End Office, 460 N. Goodman St.

Monroe Ave. Office, 560 Monroe Avenue

Portland-Clifford Office, 520 Portland Avenue

Newark Office, Newark, N. Y.

**EVERY BANKING SERVICE**Commercial, Special Interest, Trust and Investment,
Safe Deposit, and Foreign Departments**OFFICERS**RAYMOND N. BALL, *President*RAYMOND J. WHITE, *Secretary*RAYMOND F. LEINEN, *Executive Vice Pres.***VICE PRESIDENTS**

Thomas R. Baker	Harold C. Townson
David C. Barry	William G. Watson
Swayne P. Goodenough	Edward M. Weingartner
Arthur J. Meisenzahl	Frederick D. Whitney

Assistant Secretaries

Lyle G. Antis	Franklin S. Meinhart
Roy B. Combs	Luke T. Smith
Lincoln Doumaux	G. Alfred Sproat
Clarence S. Greene	Richard A. Sweeney
William Groh	Edmund J. Tuety
Robert E. Macon	William B. Vaisey
Clarence E. Marsh	Arthur B. Weston

TRUST DEPARTMENT

John W. Remington, *Vice Pres. and Trust Officer*
 William A. Rose, *Associate Trust Officer*
 Raymond H. Schlegel, *Asst. Trust Officer*

AUDITING DEPARTMENTRoy E. Miller, *Auditor***DIRECTORS**

MORTIMER ADLER
 JOSEPH T. ALLING
 RAYMOND N. BALL
 EDWARD BAUSCH
 JOHN P. BOYLAN
 JAMES C. DRYER
 ALBERT B. EASTWOOD
 BERNARD E. FINUCANE

MARION B. FOLSOM
 FRANK E. GANNETT
 JAMES E. GLEASON
 FRED C. GOODWIN
 FRED H. GORDON
 EDWARD A. HALBLEIS
 THOMAS J. HARGRAVE
 SOL HEUMANN
 ALBERT A. HOPFMAN

EDWARD G. MINER
 RUSH REEBS
 HERMAN RUSSELL
 ALBERT F. SULZER
 RAYMOND L. THOMPSON
 GEORGE W. TODD
 DOUGLAS C. TOWNSON
 HERBERT J. WINN

ROCHESTER TRUST and Safe Deposit COMPANY

Main Street West and Exchange

Capital
\$1,000,000



Surplus
\$3,000,000

Forty-Eight Years Experience

Complete Banking and Trust Service for Individuals and Corporations—
Commercial, Collateral and Mortgage Loans—Securities Information—
—All Trust Functions—Safe Deposit Boxes and Storage Vaults.

OFFICERS

ROBERT C. WATSON President	WILLARD I. LUESCHER Asst. Vice Pres.
JOHN CRAIG POWERS Vice Pres. & Chairman Ex. Com.	HARRY L. EDGERTON Asst. Secretary
EDWARD BAUSCH Vice President	JOSEPH B. HOYT Asst. Secretary Mgr. Securities Dept.
GEORGE H. HAWES Vice Pres. and Sec.	HARRY W. SAGE Asst. Secretary
LEIGH H. PIERSON Trust Officer	FAY E. WRIGHT Asst. Trust Officer
EDWARD L. WILLIAMS Treasurer	ALBERT D. STEWART, JR. Asst. Trust Officer
ALFRED J. LEGGETT Asst. Vice Pres.	EDWARD HARRIS, 2ND Asst. Trust Officer

DIRECTORS

ROBERT C. WATSON	WM. A. E. DRESCHER
EDWARD G. MINER	HERBERT J. WINN
R. ANDREW HAMILTON	FREDERICK S. MILLER
FRANK T. SAGE	SAMUEL E. DURAND
WILLIAM C. BARRY	WILLIAM F. STRANG
GEORGE H. HAWES	VINCENT S. BENNETT
JOHN CRAIG POWERS	OSCAR H. PIEPER
EDWARD BAUSCH	THEODORE C. BRIGGS
JOSEPH MICHAELS	RICHARD M. HARRIS



MAIN STREET WEST AND EXCHANGE

ROCHESTER'S FIRST TRUST COMPANY — Operating under Perpetual Charter

SECURITY TRUST COMPANY

OF ROCHESTER

Main Street, East
and
Water Street, South

OFFICERS

JAMES S. WATSON	President
JULIUS M. WILE	Vice-President
EDWARD HARRIS	Vice-President
JESSE W. LINDSAY	Vice-President
CARL S. POTTER	Vice-Pres. & Secretary
WILLIAM H. STACKEL,	Vice-Pres & Trust Officer
GEORGE F. STONE	Treasurer
HARVEY W. MILLER	Ass't Secretary
DAVID GALES	Ass't Secretary
EARL G. HOCH	Ass't Secretary
FREDERICK J. BENDON	Asst. Treasurer
SCHUYLER C. WELLS, JR.	Asst. Trust Officer
GRACE E. HOWIE	Ass't Trust Officer
G. MORTON MINOT	Ass't Trust Officer
SEWARD H. CASE	Ass't Trust Officer
BENJAMIN E. LULL	Ass't Trust Officer
EVA M. SCHREINER	Ass't Trust Officer



TRUSTEES

JAMES S. WATSON
RUFUS K. DRYER
EDWARD HARRIS
JULIUS M. WILE
CARL F. LOMB
CHARLES STERN
MORLEY A. STERN

DANIEL M. BEACH
F. HARPER SIBLEY
FRANK W. LOVEJOY
JESSE W. LINDSAY
THOMAS G. SPENCER
HERBERT EISENHART

CARL S. POTTER
WILLIAM H. STACKEL
WALTER L. TODD
GEORGE H. CLARK
WESLEY M. ANGLE
BERNARD E. FINUCANE
ARTHUR F. REED

INTEREST PAID ON DEPOSITS. Special attention given to handling Estates and Trusts. Money to Loan on Approved Securities. Designated by Superintendent of Banking Department as Depository for Reserve Funds of State Banks. Checks on Foreign Cities, Letters of Credit and Travelers Checks issued.

SAFE DEPOSIT VAULTS FOR RENT in our Electrically Protected Burglar-Proof Vault. Valuables in Trunks or Packages cared for. Moderate charges.

UNION TRUST COMPANY

ROCHESTER, NEW YORK

Member of Marine Midland Group of Banks

Every Banking Service

OFFICERS

President

WILLIAM W. FOSTER

MAIN OFFICE

Vice-Presidents

EDWARD J. MEYER, Comptroller
ELMER B. MILLIMAN
DELOSS M. ROSE, Secretary
BENJAMIN F. SAWIN
CARL R. SNIDER

Treasurer

CHARLES H. ESHELMAN

Assistant Vice-Presidents

JAMES A. CAMERON
ROBERT K. FAULKNER
EDWARD R. MURPHY
ALBERT D. PERRY

Auditor

HENRY P. SCHLENKER

Assistant Secretaries

HECTOR M. HARMON
WARREN L. HAWKINS
ALFRED F. JANUS
JOHN W. MALEENEY
LEWIS H. MORGAN
WILLIAM J. VOLZ

Assistant Auditor

F. ARTHUR ABEL

TRUST DEPARTMENT

Vice-President and Trust Officer
NELSON E. LENGEMAN

Assistant Trust Officers

ARTHUR S. CARRUTHERS
also Trust Investment Officer
R. REED GEORGE
LOUISE A. SCHOFIELD

INVESTMENT DEPARTMENT

Assistant Treasurer

CHARLES J. GRATE

MERCHANTS-EAST AVENUE OFFICE

Vice-Presidents

ALBERT S. NEWELL
CHESTER J. SMITH

Assistant Vice-Presidents

GROVER C. BRADSTREET
CHARLES BROUMOWSKY
HERMON L. UNDERHILL

OTHER CITY OFFICES

CLIFFORD-JOSEPH OFFICE

Assistant Secretary

A. JOSEPH LONDON

CHARLOTTE OFFICE

Manager

BYRON J. WILSON

NORTH-HUDSON OFFICE

Manager

CHARLES H. CLOSEN

LYELL-SARATOGA OFFICE

Manager

GORDON F. WOOD

CULVER OFFICE

Assistant Secretary

AVERY S. GILBERT

CHILL-THURSTON OFFICE

Manager

LOUIS M. BOLT

DEWEY-DRIVING PARK OFFICE

Manager

J. CURTIS FLANAGAN

OUT OF TOWN OFFICES

AVON OFFICE

Assistant Secretary

O. KENNETH COOPER

SODUS OFFICE

Assistant Secretary

FRANK H. HELMBOLD

WEBSTER OFFICE

Assistant Secretary

ARTHUR F. KURTZ

DIRECTORS

JOHN L. KEENAN
Franklin Institute

CLARENCE S. LUNT
C. S. Lunt & Co.

J. E. MCKELVEY
Director, Richardson Corp.

GILBERT E. MOSHER
Pres. The Haloid Co.

CHARLES P. SCHLEGEL
Pres. Schlegel Manufacturing Co.

CHARLES WINSLOW SMITH
Treas. Sherwood Shos Co.

ADOLPH STUBER
*Asst. Vice-President
Eastman Kodak Co.*

ARTHUR E. SUTHERLAND
Sutherland & Sutherland, Attorneys

GEORGE L. SWAN
*Pres. Goralsine & Swan
Construction Co.*

FRED K. THOMPSON
Pres. Cramer-Force Co.

CORNELIUS J. VAN NIEL
General Comptroller, Eastman Kodak Co.

J. FOSTER WARNER
Architect

LEWIS S. WHITMORE
*Vice-Pres. Whitmore, Rauber &
Vicinus*

GEORGE E. BECKER
President, Marine Midland Group, Inc.

SELDEN S. BROWN
Attorney

J. ALLEN FARLEY
*Treas. E. P. Reed & Co.
Trustee Monroe County Savings Bank*

WILLIAM W. FOSTER
*President
Union Trust Company*

JAMES F. HAMILTON
President, Morris Plan Industrial Bank

KENNETH B. KEATING
*Attorney
Harris, Beach, Folger, Bacon & Keating*

THE EAST SIDE SAVINGS BANK

OF ROCHESTER

CORNER MAIN STREET EAST AND CLINTON AVENUE SOUTH
ROCHESTER, N. Y.

INCORPORATED 1869

Chairman of the Board, WILLIAM BAUSCH

OFFICERS

<i>President</i>	- - - - -	AUSTIN C. JACKSON
<i>Vice-President and Chairman of the Board</i>	-	WILLIAM BAUSCH
<i>Vice-President</i>	- - - - -	WILLIAM H. DUNN
<i>Treasurer</i>	- - - - -	JOHN W. F. SWANTON
<i>Secretary</i>	- - - - -	HENRY B. ALLEN
<i>Cashier</i>	- - - - -	EDWARD L. GOETZMAN
<i>Comptroller</i>	- - - - -	JOSEPH H. ZWEERES
<i>Asst. Secretary</i>	- - - - -	PHILIP O. WILLIAMS
<i>Asst. Treasurer</i>	- - - - -	CHARLES H. BOORMAN
<i>Attorney</i>	- - - - -	HAMILTON C. GRISWOLD

TRUSTEES

Austin C. Jackson	P. V. C. Jackson
William Bausch	R. Andrew Hamilton
Frank A. Brownell	Oscar B. Spiehler
William H. Dunn	Hamilton C. Griswold
Frederick A. Sherwood	Herman C. Sievers

Arthur A. Barry

MONEY DEPOSITED during the first three business days of any month will draw interest from the first of that month, if left until the end of the quarter. The quarters begin with the first days of March, June, September and December. Deposits may be withdrawn on the last three business days of a quarterly period without loss of interest.

THE RATE OF INTEREST is determined at the close of each six months from the actual earnings for that period and at the highest rate which such earnings will in the best judgment of the Board of Trustees allow.

INTEREST IS CREDITED to accounts December 1st and June 1st, and if not withdrawn will bear interest as a deposit.

THE PASS BOOK must be presented for depositing or withdrawing

MONEY TO LOAN on bond and mortgage.

DEPOSITS OF ONE DOLLAR or of any larger sum, not exceeding in the aggregate Seven Thousand Five Hundred Dollars from any one depositor may be received, exclusive of interest.

THE BANK is open daily, holidays excepted, from 9 A.M. to 3 P.M. except Saturdays, from 9 A.M. to 12 o'clock noon. Open Saturday evenings from 5.00 to 8.00 P.M. to receive deposits.

**SAFE DEPOSIT BOXES IN FIRE AND BURGLAR PROOF
VAULTS \$3.00 PER YEAR AND UPWARDS**

MONROE COUNTY SAVINGS BANK

INCORPORATED 1850

OFFICERS

RUFUS K. DRYER, Chairman of the Board

WILLIAM C. BARRY, President

WALTER H. COUCHMAN, Asst. Secretary

EDWARD BAUSCH, Vice-President

FRANK E. DONNELLY, Asst. Secretary

GEORGE D. WHEDON, Vice-President

JOSEPH G. KUNZ, Asst. Secretary

FRANK B. McLAUGHLIN, Sec. and Treas.

HAROLD F. LEDERMAN, Asst. Secretary

A. DEWEY BACON, Asst. Secretary

J. WESLEY RIBEY, Asst. Secretary

FRANK T. TAYLOR, Asst. Secretary



TRUSTEES

RUFUS K. DRYER

EDWARD BAUSCH

JOSEPH MICHAELS

WILLIAM C. BARRY

W. OSBORNE ASHLEY

CHARLES F. WRAY

J. ALLEN FARLEY

GEORGE D. WHEDON

EUGENE M. LOWENTHAL

AUGUSTINE J. CUNNINGHAM

WILMOT V. CASTLE

SMITH SHELDON

JOSEPH F. WELLER

VINCENT S. BENNETT

JOSEPH F. TAYLOR

Complete Savings Bank Service

35 State Street, Rochester, N. Y.

Main-Gibbs Branch - - - 420 MAIN STREET EAST

ROCHESTER SAVINGS BANK

(INCORPORATED 1831)

Resources - \$68,000,000
More than 99,000 Depositors



West Main Street Office
47 WEST MAIN ST.

TRUSTEES

JAMES S. WATSON
ERICKSON PERKINS
J. CRAIG POWERS
WM. A. E. DRESCHER
EDWARD HARRIS
DANIEL M. BEACH
E. ALLEN STEBBINS
HERBERT J. WINN
WALTER L. TODD
M. H. EISENHART
CHARLES F. TURTON
F. HARPER SIBLEY
ALBERT A. HOPEMAN
MARION B. FOLSOM
THOMAS G. SPENCER
RICHARD M. HARRIS
JAMES P. B. DUFFY
JOHN R. SIBLEY

OFFICERS

EDWIN ALLEN STEBBINS, *President*
JAMES S. WATSON, *Vice-President*
EDWARD HARRIS, *Vice-President and Attorney*
CHARLES F. TURTON, *Vice-President*
JOHN C. HOSKING, *Secretary and Treasurer*
FRANK L. NIED, *Assistant Secretary*
ARTHUR H. LAUTERBACH, *Assistant Secretary*
CLYDE T. SUTTON, *Assistant Treasurer*
JAMES W. GRAY, *Assistant Secretary*
HARRY N. KENYON, *Assistant Secretary*
WALTER L. SCHMID, *Assistant Secretary*
GEORGE D. OLIVER, *Cashier*
GEORGE C. WILCOX, *Assistant Attorney*



Franklin Street Office
40 FRANKLIN STREET

**SAFE DEPOSIT BOXES FOR RENT FROM \$3.00 PER YEAR UP
AT THE FRANKLIN STREET OFFICE**

THE MECHANICS SAVINGS BANK

21 EXCHANGE STREET
 Branch, 89-91 EAST AVENUE
 Gas and Electric Building
 Rochester, N. Y.

Incorporated 1867

OFFICERS

WILLIAM B. HALE	- - - - -	President
WENDELL J. CURTIS	- - - - -	Executive Vice-President
JAMES C. CLEMENTS	- - - - -	Vice-President
WILMOT CASTLE	- - - - -	Vice-President
GEORGE WENDT	- - - - -	Secretary and Treasurer
ALEXANDER M. KESSELRING	- - - - -	Assistant Secretary
EUGENE J. BODETTE	- - - - -	Assistant Secretary
OSCAR J. BOTT	- - - - -	Assistant Secretary
MICHAEL M. SPANG	- - - - -	Assistant Secretary
HELEN A. WIGG	- - - - -	Cashier
ALFRED T. HALL	- - - - -	Assistant Cashier
JACOB CUSIMANO	- - - - -	Assistant Cashier
CURTIS FITZSIMONS	- - - - -	Attorney

TRUSTEES

WENDELL J. CURTIS	EDWARD A. HALBLEIB	CHARLES F. HUTCHISON
WILLIAM B. HALE	GILBERT J. C. McCURDY	CURTIS FITZSIMONS
JAMES C. CLEMENTS	HERBERT W. BRAMLEY	ARTHUR W. BEALE
WILMOT CASTLE	GEORGE WENDT	J. SAWYER FITCH
FREDERICK S. MILLER	ARTHUR J. GOSNELL	DR. ALBERT K. CHAPMAN

MORRIS PLAN INDUSTRIAL BANK OF ROCHESTER

**COLLATERAL
 and
 PERSONAL
 LOANS**



*Made on Character
 and
 Earning Capacity*

32 CLINTON AV. NORTH ROCHESTER, N. Y.
Telephone MAIN 1512

BANKERS to the MAN without BANK CREDIT

You Can Borrow Needed Money Under Our
 Plan without co-makers, endorsers or
 embarrassing investigation

WE SERVE THE PEOPLE WHO WORK

PROVIDENT LOAN SOCIETY

(A Personal Loan Co.)

31 EXCHANGE STREET ROCHESTER, N. Y.

GLENWOOD 6200

HICKOK

MANUFACTURING COMPANY

INCORPORATED

BELTS - BUCKLES - BRACES - GARTERS
MEN'S JEWELRY

*Executive Offices and Factory***850 ST. PAUL STREET****ROCHESTER, N. Y.**

Branch Offices, New York City, Chicago, San Francisco and Los Angeles

MAIN 3265

WM. F. SCHOCK

CITY BLUE PRINT CO.

31 ELM STREET

PHOTO COPIES**BLACK AND WHITE PRINTS****DRAWING MATERIALS**

ROCHESTER FOLDING BOX CO.

Color Advertising Division	Corrugated Division	Toy Division	Folding Box Division
<i>Folders</i>	<i>Corrugated</i>	<i>Jackbill</i>	<i>Cartons</i>
<i>Booklets</i>	<i>Shipping</i>	<i>Playthings</i>	<i>Display Containers</i>
<i>Hangers</i>	<i>Cases</i>		<i>Dummy Displays</i>
<i>Window Displays</i>	<i>Corrugated</i>		<i>Cigar Packs</i>
<i>Counter Cut Outs</i>	<i>Specialties</i>		<i>Cigarette Shells</i>
<i>Box Tops</i>			<i>and Slides</i>
			<i>Labels</i>

Main Office and Plant, BOXART ST., ROCHESTER, N. Y.

Sales Offices, 200 FIFTH AVENUE, NEW YORK, N. Y.

H. P. NEUN CO., INC.

MANUFACTURERS OF

PAPER BOXES

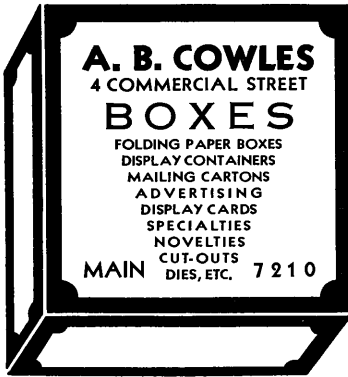
CORRUGATED and FIBRE SHIPPING CASES

*Folding Boxes*PRINTING

PROBERT ST.

Phone MONROE 1216

ROCHESTER

***This Directory***

represents Rochester in Directory libraries and big business houses in principal cities throughout the United States and Canada, as a catalog of this city's manufacturing and mercantile activities. See to it that it properly and completely

Represents You

ROCHESTER BOX & LUMBER CO.

Manufacturers of

**Bottle Boxes, Packing Boxes, Lock-Corner Boxes,
Chestnut Fibre Board Cleated Boxes,
Shooks, Shavings and Sawdust**

CULVER ROAD SUBWAY - ROCHESTER, NEW YORK

Phones CULVER 400-401

The cost of Reference Advertising of the above type is more than offset by its results.

Established 1876

ALBERT WISCHMEYER, Pres.

Incorporated 1901

NUNN BRASS WORKS

**MACHINISTS, BRASS FOUNDERS, FINISHERS AND SPECIAL
BRASS WORK TO ORDER**

Manufacturers of Brewers' Supplies and the Nunn Patent Oil and Grease Cups,
Emergency Fire Hose Couplings, Plumbers' Goods and Floor Drains and Flanges.

Factory and Office 17 WENTWORTH ST. ROCHESTER, N. Y.
PHONE GENESEE 163

ESTABLISHED 1842

HENRY WRAY & SON, Inc.

CASTINGS OF

**Brass, Nickel, Bronze, Babbitt Metal
Aluminum or Special Alloys**

BRONZE SIGNS AND MEMORIAL TABLETS

Electric Furnace Process

Phones MAIN 1120-1121-1122

258 STATE STREET

ESTABLISHED 1865

A. J. WRIGHT & CO.

Members NEW YORK STOCK EXCHANGE — CHICAGO BOARD OF TRADE

STOCKS COMMODITIES BONDS

Hotel Seneca Bldg. DAVID B. LITTLE, Manager Phone Stone 720

MEMBERS

NEW YORK COFFEE & SUGAR EXCHANGE
NEW YORK COTTON EXCHANGE
NEW YORK CURB EXCHANGE (ASSOC.)
NEW YORK COCOA EXCHANGE
COMMODITY EXCHANGE, INC.
BUFFALO STOCK EXCHANGE

BUFFALO: Erie County Bank Building
NIAGARA FALLS: Elderfield Bldg.
TORONTO: General Trust Bldg.
SYRACUSE: 101 University Bldg.
AUBURN: Masonic Temple Bldg.
BRADFORD: Lewis Emery, Jr. Bldg.

Canadian Commodity Exchange Inc. Chicago Mercantile Exchange (Corr.) New York Tobacco Exchange

GEORGE D. B. BONBRIGHT WILLIAM W. HIBBARD JOHN H. KITCHEN RAYMOND J. BANTL
CHARLES C. LEE ARTHUR J. TREMAN HARTWELL P. MORSE

GEORGE D. B. BONBRIGHT & CO.

100 POWERS BUILDING

Phone Main 4830

Members

NEW YORK STOCK EXCHANGE

CHICAGO BOARD OF TRADE

Associate Members New York Curb Exchange

NEW YORK

ITHACA

BINGHAMTON

ELMIRA



F. T. SAGE
D. S. RUTTY

STONE 351

S. C. STEELE
C. J. WOLCOTT—Special**SAGE, RUTTY & STEELE***Investment Securities*1324 LINCOLN-ALLIANCE BANK BUILDING
ROCHESTER, N. Y.**GRAHAM & CO.**

C. W. WEIS, Jr. and F. E. McKELVEY, Resident Partners

BROKERS

MEMBERS

New York Stock Exchange
*New York Curb Exchange (Associates)**Chicago Board of Trade*
Chicago Stock Exchange

SAGAMORE HOTEL Tel. STONE 640 115 EAST AVENUE

SUTRO BROS. & CO.

ARTHUR SUMMERS, Manager

*Members**New York Stock Exchange*

Telephone MAIN 2320

30 STATE STREET - - ROCHESTER, N. Y.

NATIONAL ADVERTISERS

are coming more and more to realize that newspaper or magazine publicity brings better returns when coupled up with an advertisement for the local agent in the City Directory. Put "See the City Directory for our local agent" on all your advertising, and see to it that he is listed under all the classifications in your line.

LOCAL ADVERTISERS

will improve their sales of nationally advertised products if they can induce their supply house to advertise in the above manner.

FRANCIS METAL DOOR AND WINDOW CORP.

46 and 48 CORTLAND ST. - Phone MAIN 2315

Steel Sash

Residence Casements

Fire Proof Doors and Windows

Rolling Steel Doors

Metal Covered Doors

Hollow Metal Doors and Windows

Ornamental Bronze and Aluminum

Bank Screens

Fine Show Cases

Landon Puttyless Skylights

AMERICAN GLASS and CONSTRUCTION COMPANY

Specialists in Store Front Construction

PLATE GLASS FOR STORE FRONTS, AUTOMOBILES
MIRRORS, ETC. GLASS OF ALL KINDS

46 and 48 CORTLAND ST. - Phone Main 2315

POROSIL INSULATION SERVICE

Division of

AMERICAN GLASS & CONSTRUCTION CO.

Specialists in BUILDING INSULATION

ENGINEERS and CONTRACTORS

46 and 48 CORTLAND ST. - Phone MAIN 2315

Builders SuppliesOffice Phone
Glenwood 4166Residence Phones
Main 1357-M or Stone 1271**GOOD STONE MANUFACTURING CO., Inc.*****Mason and Builder Supplies***

We Specialize in CUT CAST STONE

Garden Furniture, Cement Blocks, Steel Sash, Cement
Plaster, Lime, Gravel, Sand, Flue Lining, Etc.

OFFICE AND FACTORY

470 HOLLENBECK STREET

ROCHESTER, N. Y.

**THEODORE H. SWAN
BRICK AND TILE CO., INC.**

Phones MAIN 3956—MAIN 3950

***Facing Bricks in all colors—Fire Clay Hollow
Tile Building Blocks—Hollow Tile Fireproofing
—Architectural Terra Cotta—Floor Tile***

723 CLARISSA STREET

ROCHESTER, N. Y.

P. A. DePUYT, President

W. C. CUNNINGHAM, Secretary and Treasurer

MONROE BLOCK CO., Inc.

MANUFACTURERS OF

CEMENT BUILDING BLOCKS**DEALERS IN MASONS' SUPPLIES**

Phone MAIN 5707

348 EXCHANGE STREET

ROCHESTER, N. Y.

AMERICAN CLAY & CEMENT CORPORATION***General Contractors and
Builders Supplies***Cements, Lime, Plaster, Face Brick, Paving Brick, Fire Brick, Tile, Sewer
Pipe, Reinforcing, Paints, Waterproofing, High Temperature Cements***Everything for the Contractor and Builder***

1175 EAST MAIN ST., ROCHESTER

Phones CULVER 1000-1001

TELEPHONE MAIN 180

WHITMORE, RAUBER & VICINUS

DEALERS IN:

READY MIXED CONCRETE, CRUSHED STONE, SAND AND GRAVEL,
CUT STONE, GRANITE, INTERIOR MARBLE, TILE, PORTLAND
CEMENT, FIRE BRICK, CLAY SEWER PIPE, CEMENT BLOCKS,
SHEETROCK, STEELSASH, ORIENTAL STUCCO, METAL LATH

All Kinds of Builders' and Masons' Supplies

CONTRACTORS FOR:

ASPHALT PAVEMENTS, ASPHALT MASTIC
FLOORS, CEMENT SIDEWALKS, DRIVEWAYS

All Kinds of Street and Sewer Work

OFFICE AND MAIN YARD:

51 GRIFFITH ST. ROCHESTER, N. Y.*Everything for Building But Lumber***HIRES TURNER GLASS COMPANY**

CLARENCE BLEYLER, Manager

GENESEE 6750-6751-6752

STORE FRONTS OUR SPECIALTY

LIBBEY OWENS FORD SAFETY GLASS

Large Stocks Constantly on Hand of VITA GLASS—THE HEALTH WINDOW GLASS

ACTINIC GLASS

A GLASS THAT ABSORBS THE HEAT RAYS, TRANSMITS THE LUMINOUS RAYS AND REDUCES GLARE

Wind Shield Plate Glass
Figured Rolled Glass
Bevelled Plates

Solid Wired Glass
Corrugated Wire Glass
Skylight Glass

Plate Glass
Mirrors
Window Glass

STRUCTURAL GLASS

"VITROLITE" FOR WALL COVERINGS

HAGUE STREET, South of Lyell Ave. ROCHESTER, N. Y.

TAKE LYELL AVENUE CAR TO HAGUE STREET

MORSE SASH & DOOR CO.

*Doors, Windows, Interior Trim, Stair
and Porch Work, Etc.*

*Telephone 1835 Main***FORD ST. and WAVERLY PLACE****ROCHESTER, N. Y.**



ANNOUNCEMENT EXTRAORDINARY
**NEW ADJUSTABLE SPRING
 SASH BALANCE**

GUARANTEED FOR THE LIFE OF THE BUILDING

This new invention is the most radical and important improvement in Spring Sash Balances for double hung windows in the past 40 years. A turn of a screw driver will insure permanent, perfect operation of the sash.

Noiseless, easy and smooth operation — no rattling weights, squeaking pulleys or broken cords.

This modern equipment solves the problem of properly hung windows for all time. Windows are used more than any other installation in a building. Don't neglect them when preparing plans and specifications for that new residence. Why not remodel your old fashioned windows.

Economical to install — a comfort and convenience in the home.

PULLMAN MFG. CORPORATION

Cable Address "MANPULL" Rochester, N. Y., U. S. A.

45 Ford Street

Phone Main 6909

Directory Advertising Brings

SATISFACTORY RESULTS

See that your business is properly represented

C. GUERNSEY TICE

WILSON B. GATES

TICE & GATES

China, Glass, Silver

Telephone STONE 646

347-349 EAST AVENUE

ROCHESTER, N. Y.

Please mention this Directory when dealing with Advertisers

FRED H. GORDON
President and Treasurer

WALTER J. HOWARD
Vice-President

CHARLES C. SCHAEFER
Secretary

THE YATES COAL CO.

Anthracite **COAL** *Bituminous*
ALSO COKE

Orders for Private Residences Solicited

TELEPHONE No. 450-451 STONE

Main Office

612 LINCOLN-ALLIANCE BANK BUILDING

YARDS

93 INDUSTRIAL STREET

76 KING STREET and B. R. & P. RY. ROCHESTER

TELEPHONE MAIN 1662

SMITH COAL COMPANY

HENRY S. (DON) SMITH, OWNER

COAL & COKE

COAL

Lehigh Valley

"Blue" Coal

Philadelphia & Reading

Delaware & Hudson

COKE

R. G. & E.

Semet-Solvay

907 MONROE AVENUE

-

-

ROCHESTER, N. Y.

A Prospective Purchaser

Turns to the Reference Department covering the Desired
Business and selects certain names and addresses.

Will He Find Your Advertisement There?

If not, you lose the business, and your competitor gets it
through his advertisement in the City Directory.

Anthracite **COAL** *Bituminous*
R. G. & E. **COKE** *All Sizes*

"OVER FIFTY YEARS IN BUSINESS"
 Our Heating Expert Is At Your Service.

JENKINS & MACY CO.

General Offices:
 100 Cutler Building
 42 East Avenue

Telephone
STONE 416

Offices and Yards:
 1045 Main St. East
 119 Child Street
 381 Main St. West

LANGIE COAL CO.

STONE
 4000

HI-HEAT COAL
SEMET-SOLVAY COKE
PETRO-KOL

STONE
 4000

ALADDIN FUEL OILS
 They Cost No More

Central Office, 326 Main Street, East

4700 Lake Avenue - 201 Monroe Avenue - 693 South Avenue
 357 St. Paul St. 368 Clinton Ave. N. 2 Lake Ave.

ALBERT E. MAY

HARRY A. MAY

H. H. BABCOCK & CO.

Wholesale Dealers in

'blue coal'

BITUMINOUS COAL, COKE AND OIL

105, 106, 107, 108, 109 and 110 WILDER BLDG. - Phones MAIN 228-229

Sales Offices and Trestles

505 North Street, at N. Y. C. R. R.

720 Driving Park Av. at B. & O. R. R.

393 Main Street West, at Penn. R. R.

GRACE D. ROSS
 Pres. and Sec'y

E. REED SHUTT
 Vice-President

V. H. RUSSELL
 Treas. and Mgr.

CHAS. C. WEST COAL CO., Inc.

GUARANTEED

COAL - COKE - FUEL OIL

Main Office and Trestle - 281-285 NORTH UNION STREET

CULVER 999-2074

IRONDEQUOIT COAL & SUPPLY CO.

TELEPHONE GLENWOOD 6161

Famous Reading Anthracite
Pittsburg Soft Coal—R. G. & E. Coke

HAY—GRAIN—FEED

Fertilizer

Farm and Building Supplies

Cement

149 RIDGE ROAD EAST

ROCHESTER, N. Y.

COAL

*Quick Service by
 Courteous Drivers*

From a Truly
 Local Concern

We also
 Supply Soft Coal

E D W A R D S

COAL & COKE
 COMPANY, INC.

Guaranteed Fuels

LOW CASH PRICES

COKE

Yard Office

200 Exchange Street

— Phone —
MAIN 3077

COLLECTIONS

ADJUSTMENTS

CREDIT REPORTS

DOEHLER MERCANTILE AGENCY

G. J. DOEHLER, Manager

Bonded For

COMMERCIAL COLLECTIONS EVERYWHERE

"ARE CREDIT LOSSES STEALING YOUR PROFITS?"

We Solicit Your Old Bills For Collection

Personal Contact With Debtors

421-425 Central Trust Bldg.

25 Main St. E.

Phone Main 673

YOU CANNOT AFFORD

To miss a full representation in the classified part of the **Directory**. It is a Buyers' and Sellers' Guide and through its consultation thousands of dollars worth of goods are sold annually

YOU LIKE to Patronize those
Concerns Who are in Business
to Stay.

It's human to expect that such business establishments always stand back of the wares they sell.

The advertising in this Directory is suggestive of the stability and permanency of the advertisers.

Frauds, fakes, get-rich-quick and other schemers have little use for directory advertising. It lives too long.

The modern city directory is a business institution. It occupies a place peculiarly its own. It is as necessary to the progress and development of a city generally as anything naturally would be which deals with such a fundamental as the citizens themselves.

**IF YOU ARE NOT ADVERTISING YOUR
BUSINESS IN THE DIRECTORY, MAY WE
EXPLAIN HOW AND WHY IT WILL PAY
YOU.**

SAMPSON & MURDOCK CO., Inc.

Directory Publishers for over 85 years

179 LINCOLN STREET .. BOSTON, MASS.

GORSLINE & SWAN CONSTRUCTION CO.

*Mason Contractors and
General Building Construction*

Estimates and construction counsel services are
gladly furnished at any time without obligation

Phone Stone 1118

96 PEARL STREET, ROCHESTER

Residence, 96 HILLSIDE AVENUE

Phone MONROE 2517-W

HOMER KNAPP

Established 1889

GENERAL BUILDING CONSTRUCTION

Estimates Furnished

Quality Homes and Alterations

1462 MAIN STREET, EAST

Phone CULVER 3073

ROCHESTER, N. Y.

PHONE MAIN 3422

I. M. LUDINGTON'S SONS, Inc.

General Contractors

GENESEE VALLEY TRUST BLDG. - 45 EXCHANGE ST.

A. A. HOPEMAN

B. C. HOPEMAN

A. W. HOPEMAN & SONS CO.

Building Contractors

OFFICE

569 LYELL AVENUE

ROCHESTER, N. Y.

HOPEMAN LUMBER AND MFG. CO., Inc.

FRANK J. KINNEY

PHONE MONROE 6850

F. H. RAPP COMPANY, Inc.***Building Contractors***

General Construction

Office and Works

188 MOUNT HOPE AVENUE

ROCHESTER, N. Y.

ESTABLISHED 1863

PHONE MAIN 675

STEWART & BENNETT, Inc.***General Contractors***

STORE FRONTS AND REMODELING A SPECIALTY

126-132 N. WATER STREET,

ROCHESTER, N. Y.

WM. SUMMERHAYS SONS

CORPORATION

Boiler Settings, Fire Masonry, Special Furnaces, Power Plant Chimneys
of Radial and Common Brick . . . Lightning Arrestors Installed**SUMMERHAYS REFRACTORY SUPPLIES**

INCORPORATED

Fire Brick, Carborundum Brick, Insulating Brick, Plastic Fire Brick,
High Temperature Cements, Fire Clay, Asbestos.*Phone MONROE 1155*

Office and Yard, 614-632 CLINTON AVE. S., ROCHESTER

From 6 A. M. to 6 P. M.

Call

Glenwood 1232



After 6 P. M.

Call

Glenwood 329

C. P. WARD, INC.***General Contractor***

700 HOLLENBECK STREET .. ROCHESTER, N. Y.



Bartholomay

COMPANY, INC.

QUALITY ICE CREAM
BULK AND BRICK

Pasteurized Milk and Cream in Cream Top Bottles

Guernsey Pasteurized—Certified—Vitamin D Milk

MANUFACTURERS OF ICE

ICE CREAM DEPARTMENT
Phone MAIN 6520

555 ST. PAUL ST.

DAIRY DEPARTMENT
Phone MAIN 6523

BRIGHTON PLACE DAIRY COMPANY, INC.

VITAMIN D MILK

Under Laboratory Control

45 FULTON AVENUE

- -

ROCHESTER, N. Y.

GLENWOOD 144

A. W. WOOD
President

MAIN 386

OSCAR B. SPIEHLER
Treasurer

BIG ELM DAIRY CO.

DEALERS IN

Pasteurized and Certified Milk and Cream

Creamery Butter and Cottage Cheese Fresh Daily

476 EXCHANGE STREET

..

ROCHESTER, N. Y.

M c C U R D Y ' S

*Rochester's Foremost
Quality Department Store*

MAIN and ELM STREETS

Phone MAIN 5500



DOYLE DETECTIVE BUREAU

801-803-805 COMMERCE BUILDING



Phones MAIN { 1743
 { 1744

Nights MONROE { 3278
 { 5006-W

INVESTIGATIONS

Criminal - Commercial - Civil
Character - Personal

JOHN A. DOYLE, Director

28 YEARS EXPERIENCE
IN

PRO}TECTION
DE}TECTION

A. T. DOYLE, Manager

OFFICES IN
PRINCIPAL CITIES

UNIFORMED POLICE

For Protection of Residences
Factories - Stores

K. V. DOYLE, Supervisor

CONFIDENTIAL

— EXPERT SECRET SERVICE —
LADIES DEPARTMENT

RELIABLE

JENNINGS DETECTIVE AGENCY

A. F. JENNINGS, Principal

“DEEDS NOT WORDS”

CONSULTATION FREE

OFFICE TELS. STONE 950-951

Night Tels. { Gen. 1990
 { Gen. 6131

ROCHESTER—Suite 410-412-414 Temple Bldg.

NEW YORK CITY—580 Fifth Avenue

BUFFALO—312 Brisbane Building

Your Advertisement in the City Directory is
an expression of your own Faith in your
Ability to run a Successful Business during
the life of the book

Did you ever consider that?

Druggists, Retail**Druggists, Wholesale**

99

C. W. SANFORD
Vice-Pres. and Treas.F. H. GOLER
Pres. and Gen. Mgr.F. W. FLEMING
Secy.**THE PAINE DRUG COMPANY**

ESTABLISHED 1820

MAIN 1820

Licensed PharmacistsPHYSICIANS' SUPPLIES AND SURGICAL INSTRUMENTS
TRUSSES AND SUPPORTERS*Prescription Specialists and Manufacturing Pharmacists***24 and 26 EAST MAIN STREET****ROCHESTER, N. Y.**MRS. WM. H. BEMISH
PresidentESTABLISHED
1839C. G. HEISE
Sec. and Treas.**J. K. POST DRUG CO.*****Wholesale and Retail Druggists***

Fine Chemicals and Drugs

17 EAST MAIN STREET**PHONE MAIN 2194**

BRANCH, 338 PLYMOUTH AVE., S.

Phone MAIN 3545

McKESSON-ROCHESTER

DIVISION OF McKESSON & ROBBINS, INCORPORATED

Wholesale Druggists***Wholesale Liquors***

SODA FOUNTAINS

STORE FIXTURES

DRUGGISTS SUNDRIES

230-236 ST. PAUL STREET

Drug Dept., Phone STONE 4580

Liquor Dept., Phones STONE 420-421

IS DIRECTORY ADVERTISING READ?A steady increase in classified
advertising would seem to indi-
cate an appreciation of its value
by business men in general**WHAT ARE YOU DOING NOW?****Please mention this Directory when dealing with Advertisers**

BERGER BROS. ELECTRIC MOTORS, INC.

Not affiliated with any other concern of similar name in Rochester

1346 UNIVERSITY AVENUE

Telephones MONROE 2094
 MONROE 2095
 MONROE 2096
 Night CHAR 773-M
 MONROE 6460
 MONROE 100
 WESTERN UNION W U X
 N. Y. C. MAIN LINE SIDING



NEW MOTORS
 REBUILT MOTORS
 ACCESSORIES
 CONTROL
 REPAIR PARTS
 MOTOR REPAIRS
 MOTOR SERVICE
 MOTOR INSTALLATION

TRANSFORMERS REPAIRED

Authorized Service and Parts for G. E. Motors and Control

HICKSON ELECTRIC AND RADIO CORPORATION*Radios, Washers, Refrigerators, Appliances and Supplies*

SOUND AND PAGING SYSTEMS

Wiring, Fixtures, Electrical Construction and Repairs of Every Description

ESTIMATES ON REQUEST

Cor. MAIN and FRANKLIN STREETS ROCHESTER, N. Y.
 Opp. EAST AVENUE Phone *STONE 93*

LAUBE ELECTRIC CORPORATION*Electrical Contractors**Heating Equipment*

TIMKEN SILENT AUTOMATIC OIL BURNERS

For Installation and Service Call

STONE 104-105

191-193 EAST AVENUE - - ROCHESTER, N. Y.

If you want business ALL of the time
 advertise ALL of the time

T. H. GREEN ELECTRIC CO.

INCORPORATED

Contractors and Manufacturers

Power and Light Installations

*Panels and Switchboards Automatic Telephones**General Electric Motors**Motor and Apparatus Repairs Electrical Supplies**Radio and Appliances***"FRIGIDAIRE" Commercial Equipment****Air Conditioning and Service****31-37 N. WATER ST., ROCHESTER, N. Y.**

Telephones Main 555-556

MOSELEY & MOTLEY MILLING CO.

INCORPORATED 1888

Manufacturers of

BIG "B" FLOUR*Flour City Roller Mills A and B***MILL STREET, foot of Brown****ROCHESTER, N. Y.**

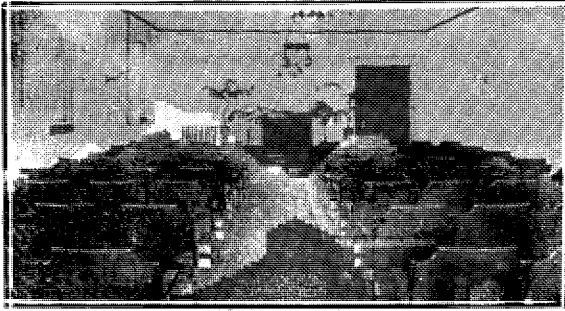
OUR ADVERTISERS HELP TO KEEP
THE SUBSCRIPTION PRICE OF THIS
BOOK AT A REASONABLE FIGURE.

**WE ASK YOU TO GIVE THEM
YOUR SUPPORT**

L. SCHAUMAN'S SONS

Phone
MAIN 2274

Funeral Directors



PUBLIC FUNERAL CHAPEL

Phone Main 2274

Open Day and Night

609 CLINTON AVE., NORTH .. ROCHESTER, N. Y.

ANDREW J. MATTLE

JOHN W. MATTLE

A. J. MATTLE & SON

Funeral Directors

Phones STONE 1552, 1553

300 CUMBERLAND STREET

ROCHESTER, N. Y.

A REAL NECESSITY IN EVERY OFFICE

THE CITY DIRECTORY

The Modern Up-to-Date Method of Getting
Accurate Information Quickly

A Time Saver—A Money Maker for Every Business
Let Us Show You How

Please mention this Directory when dealing with Advertisers

Funeral Directors

PHILIP A. BENDER

CHARLES W. BENDER

CHRISTIAN BENDER

BENDER BROTHERS

ESTABLISHED 1859

Funeral Directors

Phone STONE 1179

301 ALEXANDER STREET

ROCHESTER, N. Y.

HENRY D. HALLORAN & SONS

(THOMAS B. MOONEY'S SONS, INC.)

HENRY D. HALLORAN, Pres.

M. ALVAH HALLORAN, Sec. and Treas.

VERNON E. HALLORAN, Vice-Pres.

Funeral Directors

195 PLYMOUTH AVENUE, SOUTH

Phone MAIN 127

ROCHESTER, N. Y.

RUFUS F. MAIER

GERARD L. MAIER

L. W. MAIER'S SONS

ESTABLISHED 1872

Funeral Directors

Telephone STONE 609

870 CLINTON AVENUE NORTH

-

ROCHESTER, N. Y.

The Classified Business Lists in this directory supplemented by this reference department constitute a complete Buyers Guide.

Consult it for your Needs

TELEPHONE GENESEE 211

Anthony J. Ryan's Son

JOSEPH E. RYAN

Funeral Director

4 WEST AVENUE

- -

ROCHESTER, N. Y.

C. F. SCHEUERMAN SONS*Funeral Home*

The Display at our Funeral Home shows the complete
Funeral Service in Plain Figures.

230 BROWN STREET

*Phones Genesee 438-5411***EUGENE A. TIMMERMAN***Funeral Director*

FUNERAL PARLORS FOR YOUR CONVENIENCE

Phone Monroe 1684

510 MONROE AVENUE

ROCHESTER, N. Y.

NATIONAL CASKET COMPANY, Inc.

Phones MAIN 8 and 9 142 EXCHANGE STREET

Largest Manufacturers of Funeral Supplies in the World

— BRANCHES —

Albany, N. Y.
Atlanta, Ga.
Ashville, N. C.
Baltimore, Md.
Boston, Mass. (2)
Brooklyn, N. Y.
Buffalo, N. Y.

Chicago, Ill. (2)
Cleveland, Ohio
Dallas, Tex.
E. Cambridge, Mass.
Harlem, N. Y.
Indianapolis, Ind.
Louisville, Ky.

Long Island City, N. Y.
Nashville, Tenn.
Newark, N. J.
New Haven, Conn.
New York, N. Y. (2)
Oneida, N. Y.
Philadelphia, Pa.

Pittsburg, Pa.
Portland, Me.
Providence, R. I.
Rochester, N. Y.
Scranton, Pa.
Syracuse, N. Y.
Washington, D. C.

Please mention this Directory when dealing with Advertisers

Ask About Our Convenient Plan of Deferred Payments!

HOWE & ROGERS CO.

COMPLETE HOME FURNISHINGS

Rugs, Furniture, Lamps, Draperies, Radio, Pianos
Linoleum, Stoves, Refrigerators, Washers, Vacuum Cleaners

89 CLINTON AVE. S.

TELEPHONE STONE 1800

GEO. J. MICHELSEN
President

R. J. MICHELSEN
Vice-Pres. and Sec.

W. F. MICHELSEN
Treasurer

GEORGE J. MICHELSEN FURNITURE CO.

MANUFACTURERS OF

Bed Room Furniture

Office, Factory and Salesroom

172-182 AVENUE D

ROCHESTER, N. Y.

Phone GLENWOOD 4719

The Advertisement that Lives and Works

FOR ONE YEAR

Your advertisement here reaches the prospective customer at the time he is looking for your special product.

A letter from you will bring more information as to the value.

SAMPSON & MURDOCK CO., Inc.

Publishers of Directories Since 1846

179 LINCOLN STREET

- -

BOSTON, MASS.

Rochester's Largest Exclusive Manufacturing Furriers



FUR COATS
FUR JACKETS—FUR SCARFS
Relining-Remodeling-Repairing-Cleaning

Automatic Fur Cold Storage

PHONE MAIN 5729

WM. V. GRAESER CO. 38-40-42 Clinton Ave., North

GEORGE VERESCHAK

*Furs Remodeled, Made To Order
and Repaired*

PERSONAL SUPERVISION

233 East Avenue

Telephone Stone 2497



H. L. HUNTER CO.

Americas Finest Furriers

REMODELING RESTYLING REPAIRING

..FUR STORAGE..

1 CLINTON AVENUE S. - - STONE 480

Two Huge Floors of Furs

CONSULT THE
CLASSIFIED BUSINESS LISTS
IN THIS DIRECTORY

IF YOU WOULD FIND WHAT YOU WISH TO BUY

HENRY LESTER HARDWARE CO., INC.

GROVER A. CLICQUENNOI, President and General Manager

Distributors

Lawco Medicine Cabinets

Williams Pivot Sash

DELTA TOOLS

GAS RANGES

B P S PAINTS

School Wardrobes

Overhead Type Garage Doors

RUSSWIN-BUILDERS HARDWARE

MAIN 5355 — TELEPHONES — MAIN 5356

150 West Main Street

Rochester, N. Y.

THE City Directory is the most effective and most economical method of reaching all the people all the time. Those who buy without looking at the classified list of those who sell do themselves great injustice. The classified lists in the Business Directory form the best Buyers' Guide on earth. A modern up-to-date method of getting what you want.

MATHEWS & BOUCHER**WHOLESALE
HARDWARE MERCHANTS**

Mill and Factory Supplies
 Machinists' Tools and Supplies
 Plumbers' Supplies
 Builders' Hardware
 Agricultural Tools
 Carpenters' Tools
 Tinners' Supplies
 Electrical and Radio Supplies
 Skates and Sleds
 Wire Screens

*We Solicit Your Orders by Mail or Telephone
 Quality Service and Price Guaranteed*

26 EXCHANGE STREET**Tels. MAIN 1064-1065-1066-1067****FORD HOTEL***For Men and Women***Rates Per Day \$1.00 to \$2.00 Single \$2.00 to \$3.00 Double****400 ROOMS ABSOLUTELY FIREPROOF****CHESTNUT AND ELM STS.****ROCHESTER, N. Y.**PHONE MAIN 6300 — *Park Avenue Car to Door* — PHONE MAIN 6300

BUFFALO

ERIE

TORONTO

MONTREAL

THE NORMANDIE-APARTMENT HOTEL**253 ALEXANDER STREET****PHONE STONE 1840***165 Apartments, Each with Private Bath***Furnished Suites—By Day, Week or Month****Single Rooms \$2.00 up Double Rooms \$3.00 up***Private Dining Rooms For*

BANQUETS

WEDDINGS

PARTIES

DINING ROOM

-

DELICATESSEN

-

GARAGE

HOTEL ROCHESTER

MAIN 6510

W. D. HORSTMANN

MAIN 6510

300 Outside Rooms From \$1.50Excellent Moderate Priced Restaurant
and Tap Room

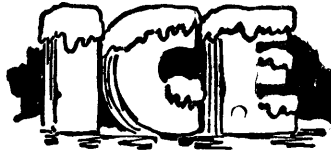
CLUB LUNCHEON

TABLE D'HOTE DINNER

GARAGE ADJOINING

HETZLER BROS. ICE CO., Inc.*Wholesale and Retail*

Established 61 Years

ABSO-PURE**COAL, COKE
BEER, ALE**801
DRIVING PARK
AVENUE**ICE CUBES****GLENWOOD****446****GENERAL ICE CREAM CORPORATION**

ROCHESTER DIVISION

*Wholesale and Retail Manufacturers of***Plain and Fancy Creams and Ices****"FRO-JOY"**—Ice Cream at its Best

PHONES MAIN 917, 918, 919

CLIFF ST. FOOT OF WHITE ST.

ROCHESTER, N. Y.

If it weren't for the false notion about the high price of a directory hundreds of people would no longer deny themselves the information to be found in one.

36TH YEAR

PERCY B. DUTTON

Transacting Business As

DUTTONS INSURANCE OFFICE

ESTABLISHED 1899

This Office Represents Reliable Companies
Which Are Prompt and Fair in Adjustment and
Payment of Claims.

INSURANCE OF ALL FORMS, PRINCIPALLY,**FIRE—Tornado, Rents, Use & Occupancy****LIABILITY—Public, Owners-Landlords &
Tenants, Elevator, Boiler, Compensation****ACCIDENT—Health, Plate Glass, Burglary****BONDS—Fidelity, Surety****AUTOMOBILE—Liability, Property Damage,
Fire, Theft, Collision**

Large Property-Owners are enabled through our
Service, to procure the Most Complete Insurance
Protection at the Proper Cost. We are freely
consulted by appointment without obligation.

TELEPHONES - MAIN 1022 & MAIN 1023**8 Exchange St. Corner Main St. E.****FOURTH FLOOR - WILDER BUILDING**

Member Underwriters Board of Rochester,
New York State and National Associations of
Insurance Agents.

ASSOCIATES**JESSE H. DUTTON WALTER J. DUTTON**

For Over 20 Years Agents of

Zurich General Accident & Liability Insurance Co.

Claims Settled Through This Office

1852 — 1936

W. OSBORNE ASHLEY, Pres.
 J. A. DUPUY, Vice-Pres.
 CHARLES E. SCHMIDT, Treas.

ARTHUR L. GRIFFITH, Vice-Pres.
 FRED. D. ZWICK, Sec'y
 HERBERT J. HOEFFEL, Office Mgr.

EGBERT F. ASHLEY CO.

General Insurance

UNION TRUST BUILDING, 19 MAIN ST., WEST

Member of Underwriters Board of Rochester, N. Y., Inc.

COMPANIES REPRESENTED

Connecticut Fire Insurance Co. of Hartford, Conn.
 Fire Association of Philadelphia, Pa.
 Great American Insurance Co. of New York, N. Y.
 Guarantee Company of North America of Montreal, Canada
 Hartford Fire Insurance Co. of Hartford, Conn.
 Hartford Live Stock Ins. Co. of Hartford, Conn.
 Hartford Steam Boiler Inspection & Ins. Co. of Hartford, Conn.
 North British & Mercantile Ins. Co. of London, England
 Providence-Washington Ins. Co. of Providence, R. I.
 Rochester American Ins. Co. of New York, N. Y.
 Standard Accident Insurance Co. of Detroit, Mich.
 United States Guarantee Co. of New York, N. Y.

FIRE — WORKMEN'S COMPENSATION — PLATE GLASS
 LIABILITY — LIVE STOCK — RAIN — MARINE — BURGLARY
 STEAM BOILER—BONDS—TRANSPORTATION—AUTOMOBILE

REPRESENTED BY

HERMANN DUILL BYRON PERRY, JR.
 HARRY E. MILLER FREDERICK G. MEYER

John B. Hudson, Adjusting Dept. (Workmen's Compensation—Automobile)

R. T. Goodwin, Steam Boiler Inspector

Telephone Main 444

ROCHESTER, N. Y.

CARL H. HENNRICH

INC.

Member of The Underwriters Board of Rochester, N. Y., Inc.

National Association of Insurance Agents

We Do Not Sell Assessment or Cut-Rate Insurance

INSURANCE and BONDS

Of Every Description

The Application of Systematic, Scientific Analysis to the Problems of Insurance is the Surest Way of Securing both Adequate Protection and Lowest Cost.

Our organization is equipped to provide this valuable service

Companies Represented

General Agents

Hartford Accident & Indemnity Co.
of Hartford, Conn.

Agents

Continental Insurance Co. of N. Y.
Niagara Fire Insurance Co. of N. Y.
Hartford Fire Ins. Co. of Hartford,
Conn. (Auto. Dept.)

FOR SERVICE—Telephones MAIN 435—436

4th Floor, East Ave. Building .. 49 EAST AVENUE

E. S. BOHACHEK INC.

General Insurance

General Agents—(Am.) Lumbermens Mutual Casualty Co. of Illinois

Our Companies Have Been Paying From 15% to 25%
Dividends for Over 25 Years

PHONES MAIN 87-88

LOEWS ROCH. THEATRE BLDG. - CLINTON AVE. S. AT COURT

A. F. STAHL, Pres.
WM. F. STRANG, Secy.

A. S. BATES, Vice Pres.
I. M. WOOD, Asst. Treas.

ROCHESTER AGENCY, Inc.

Incorporated 1912

*Insurance Protection You
Can Rely Upon*

2040 EAST AVENUE, or The Nearest Telephone

Member Local, State and National Associations

Telephone MONROE 1345

AUSTIN F. GRAB, Pres. ROBERT F. WOERNER, Vice Pres. LEONARD H. HENDERSON, Vice Pres.
 ROY A. DUFFUS, Sec'y PHILIP C. GOODWIN, Treas.

JAMES JOHNSTON AGENCY

INCORPORATED

NO. 204 GRANITE BUILDING
 Telephone MAIN 697

INSURANCE

Companies Represented

Home Insurance Company of New York	Eagle Indemnity Company
City of New York Insurance Company	American Surety Company

Agency Representatives

WILLIAM R. ORWEN
 GEORGE W. FIELDS

ARTHUR L. WELSH
 CHARLES T. HUBER

261
 MAIN

HARRY J. McKAY

261
 MAIN

Member of the Underwriters Board of Rochester, N. Y., Inc.
 National Association of Insurance Agents
 We do not sell Mutual or Cut-Rate Insurance

GENERAL INSURANCE SERVICE

Representing Companies with a Century's Record for
 Service and Satisfactory Settlements

409-413 Central Trust Building - - 25 East Main Street
Frederick Mutschler, Representative

ESTABLISHED 1901

PHONES: MAIN 478-479

WOLFERT BROTHERS

General Insurance

2nd Floor TRIANGLE BUILDING
 MAIN ST. E. and EAST AVE. ROCHESTER, N. Y.
 OVER UNION TRUST CO.

Insurance (General)FIRE
BURGLARYLIABILITY
PLATE GLASSACCIDENT
HEALTH**HARRY B. CROWLEY***Member of the Underwriters Board of Rochester, N. Y., Inc.**National Association of Insurance Agents*

We do not sell Mutual or Cut-Rate Casualty Insurance

INSURANCE

STONE 3908

403-405 GRANITE BUILDING

AUTOMOBILES

BONDS

COMPENSATION

BOILERS

HENRY S. FORBES
PresidentCHESTER C. CHAMPION
Secretary & Treasurer**FORBES & PORTER, INC.****General Insurance**Member National Association of Insurance Agents
Member Underwriters Board of Rochester, N. Y., Inc.

306 Granite Building

130 Main St. E., Rochester, N. Y.

TELEPHONE MAIN 833

EDW. ENGLEHARDT CO.

FRANK H. ENGLEHARDT, Mgr.

Members of the Underwriters Board of Rochester, N. Y. Inc.
National Association of Insurance Agents**Fire, Casualty, Marine Insurance**
Surety Bonds

16 STATE STREET

Phone Main 1387

ROCHESTER

"SAVE WITH SAFETY"**AMERICAN MOTORISTS INS. CO.**

CHICAGO, ILL.

*(A Stock Company—Not Mutual or Cut Rate)*DIVIDEND Has Never Been Less Than 20^{per}/_{cent}

No Assessment Liability

Coast to Coast Claim Service

OFFICE
Stone 3180**CLARENCE A. VICK, Agt.**
245 CUTLER BLDG., ROCHESTER, N. Y.RESIDENCE
Monroe 2068-M

Please mention this Directory when dealing with Advertisers

Insurance (General)

115

F. M. LOEWENGUTH
*President*ED. B. DINEEN
*Secretary and Treasurer***LOEWENGUTH & DINEEN**
INCORPORATED***General Insurance and Surety Bonds***

Members of The Underwriters Board of Rochester, N. Y., Inc.

Insurance Agents 51 Years

PHONE MAIN 1251

34 STATE STREET, Room 208 - - ROCHESTER, N. Y.

EMIL R. BOLLER, President

HERBERTA E. BOLLER, Vice-President

DONALD G. CLARK, Secretary

EZRA J. BOLLER AGENCY, INC.

Member of the Underwriters Board of Rochester, N. Y., Inc.

National Association of Insurance Agents

We do not sell Mutual or Cut-Rate Insurance

GENERAL INSURANCEAccident
Automobiles
Boilers
Bonds
BurglaryCompensation
Elevators
Fire
Group Insurance
HealthLife
Marine
Parcel Post
Plate Glass
Public LiabilitySprinkler Leakage
Teams
Tornado
Tourist Floater
Use and Occupancy

834-836 GRANITE BLDG. MAIN 5304-5305 ROCHESTER, N. Y.

E. C. MOONE, Pres.

F. J. RIEDMAN, Vice Pres. and Sec'y

R. M. AMESBURY, Aast. Treas.

E. C. MOONE, Inc.*GENERAL AGENTS*American Surety Co. of N. Y., N. Y. City Pennsylvania Fire Insurance Co., Phila, Pa.
American Equitable Assurance Co. of N. Y., N. Y. City
Merchants Fire Assurance Corp. of N. Y., N. Y. City
Pacific Fire Insurance Co. of N. Y., N. Y. City
Maryland Casualty Co., Baltimore, Md.

400 TAYLOR BUILDING STONE 6065 ROCHESTER, N. Y.

R. S. PAVIOUR & SON, Inc.

ERNEST A PAVIOUR, President

JAMES H. FARRELL, Treasurer

OFFICE 65 YEARS OLD—ESTABLISHED 1870

Members of the Underwriters Board of Rochester, N. Y., Inc.
*National Association of Insurance Agents****COMPANIES REPRESENTED***Phoenix Insurance Company of Hartford, Conn.
United States Casualty Company of New York

1233-1245 LINCOLN ALLIANCE BANK BLDG. Phone MAIN 220

Insurance (General)

HAROLD A. PYE
Pres. and Treas.

FRANK O. HAYES
Vice-Pres. and Sec'y

STANDARD INSURER'S AGENCY

OF N. Y., INC.

Writing All Forms of

FIRE, CASUALTY, MARINE INSURANCE

Fidelity and Surety Bonds

912-914 GRANITE BUILDING

ROCHESTER, N. Y.

Phones Stone 3637—3638

T. A. SHARP
President

C. EMMETT HAYES
Treasurer

C. R. HAGGERTY
Secretary

HAYES, SHARP & HAGGERTY, Inc.

Member of the Underwriters Board of Rochester, N. Y., Inc.

National Association of Insurance Agents

We do not sell Mutual or Cut-Rate Casualty Insurance

General Insurance

414 MAIN STREET, EAST, Cor. Gibbs

ROCHESTER, N. Y.

PHONES STONE 1196—1197

GEORGE DIETRICH CO., Inc.

We Write all Lines of

INSURANCE and SURETY BONDS

Member of the Underwriters Board of Rochester, N. Y., Inc.

National Association of Insurance Agents

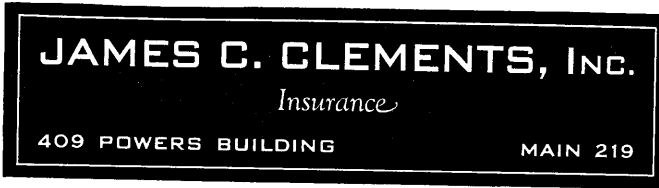
8th Floor Lincoln-Alliance Bank Bldg.

Tels. Stone 78—7383

**Good Business Insurance Includes
an advertisement in the local City
Directory—Always.**

JAMES C. CLEMENTS

H. EVEREST CLEMENTS

*Company Representation*Globe Indemnity Company
New York, N. Y.The Liverpool and London and Globe Insurance Co., Ltd.
New York, N. Y.**VIERHILE AND DE MALLIE
INC.**MEMBER OF THE UNDERWRITERS BOARD OF ROCHESTER, N. Y., INC.
NATIONAL ASSOCIATION OF INSURANCE AGENTS
We do not sell Mutual or Cut-Rate Casualty InsuranceWE WRITE
ALL KINDS OF
INSURANCE**INSURANCE**ALL CLAIMS
ADJUSTED AT
THIS OFFICE

MAIN 408

502-505 POWERS BUILDING

ROCHESTER, N. Y.

THE LIKLY AGENCY, INC.*Successors to*
LIKLY-FROST AGENCY, INC.**INSURANCE***Fire — Casualty — Surety — Marine*

424 CUTLER BUILDING

Telephone STONE 99

JOHN J. ECKHART*General Insurance and Surety Bonds*

GENERAL AGENT

STANDARD SURETY & CASUALTY COMPANY, NEW YORK, N. Y.
AUTOMOBILE INSURANCE CO. OF HARTFORD, CONN.
MONARCH FIRE INSURANCE CO., CLEVELAND, OHIO
PEARL ASSURANCE CO., LTD., NEW YORK, N. Y.

954 LINCOLN-ALLIANCE BANK BLDG. - Phone STONE 1432

LUCAS & DAKE CO.

INC.

General Agents

ÆTNA LIFE INSURANCE COMPANY, HARTFORD, CONN.
 ÆTNA CASUALTY & SURETY COMPANY, HARTFORD, CONN.
 AUTOMOBILE INSURANCE COMPANY, HARTFORD, CONN.

INSURANCE

ÆTNA BUILDING MAIN 938-939 25 EXCHANGE STREET

DAVID GOLDMAN, President

ESTABLISHED 1914

DAVID GOLDMAN CO., Inc.*Insurance and Real Estate***STORE LEASING**

We are members of National, State and Local Associations

MAIN 2984 - - 6 STATE ST., ELWOOD BUILDING

We write all forms of Insurance and Bonds

The A-B-C of Insurance

**Against Business Loss Means That You Must be listed In
 The Great and Only Real Buyers Guide—The City Directory—The
 Publication That Lists Them All.**

If you are not Properly listed you are missing the opportunity that is presented to every business concern to become a stockholder in this great enterprise on a co-operative basis. The dividends are the service and low prices. It is the greatest illustration of the socialistic principle of doing business that there is in our modern society. The City Directory is the book of the people and places every individual in the city on the same basis. This gives the small business the same opportunity as the large business—a truly democratic principle and a rare one today.

Give this matter your careful attention and be listed in the Great Information Bureau of the City where it can be instantly located. It is a card index system of the city with four different ways of indexing and nothing with a name and address exists that cannot be readily found by any person who knows their A-B-C's.

INSURANCE

Please mention this Directory when dealing with Advertisers

REMODELING DIAMOND JEWELRY

— E. J. SCHEER, INC. —*Rochester's Finest Jewelry Store*

Diamonds
Mountings
Jewelry
Silverware
Clocks
Rock Crystal

"SCHEERTON" MOUNTINGS

WATCHES
Movado
Longines
Gruen
Hamilton
Concord

Visit Our Beautiful Silver Display Dept.

EXPERT WATCH AND JEWELRY SERVICE

259 MAIN ST. E. Opposite SIBLEY'S - - Phone Stone 710**J. C. WILSON COMPANY***Jewelers and Pawnbrokers*

Money advanced on Diamonds, Watches, Etc. Rates 1, 2 and 3%

Watches, Diamonds, Jewelry for sale and unredeemed Pledges

39 MAIN ST., EAST (up stairs)

PHONE MAIN 5738

THINK how many other people besides
yourself read these advertisements.
Every hour of the day the Directory is
consulted.

ESTABLISHED 1871

Stecher-Traung Lithograph Corporation

Capital \$3,500,000.00

Labels for canned foods and other products—Folding
Boxes—Seed Bags—Seed Hangers— Seed Catalogue
Covers—Greeting and Post Cards and Toy Books.

Phones Monroe 450, 451, 452, 453

274 N. GOODMAN ST.

STUART M. FRAME
President

E. A. KURKOWSKI
Vice-President

GEORGE W. LOVE
Secretary

CROUCH & BEAHAN CO.

ESTABLISHED 1855

LUMBER PRODUCTS PAINT AND COAL

PEE GEE PAINTS, VARNISHES, ENAMELS and BRUSHES
TEMLOCK INSULATION, TILE, AND PLANKING
NU WOOD INSULATION, TILE and PLANKING
BALSAM WOOL INSULATION
OVER THE TOP DOOR HARDWARE
SHEET ROCK and GOLD BOND
INTERIOR TRIM
SHINGLES - LATH - POSTS - PICKETS, ETC.

99 DEWEY AVE. opposite LORIMER ST., ROCHESTER
TELEPHONE GLENWOOD 350

You can never tell

When you are going to need, and need badly, some part of the information that is contained in this book. Why not spend a little time, now, looking it over, so when the need arises you will know just where to look.

Read over the digest of contents on the title page, and consult the Index.

J. A. DETWEILER, President

C. B. OSTRANDER, Secretary-Treasurer

EXCHANGE LUMBER CO., INC.

ESTABLISHED 1909

INCORPORATED 1920

Construction Lumber—Hardwoods

Sash — Doors — Interior Trim — Oak Flooring

U. S. GYPSUM PRODUCTS	}	Sheet Rock —	Rock Lath
		Insulation Board—	Hard Board
		Pulp Board —	Roofing

551-563 LYELL AVENUE

-

-

Telephone GLENWOOD 2300

HERRICK LUMBER CO., Inc.

Successors to COMSTOCK LUMBER CO., Inc.

= LUMBER =

1030 MAIN STREET, EAST

ROCHESTER, N. Y.

Phone CULVER 1416

GEORGIAN BAY LUMBER CO., Inc.

WHOLESALE AND RETAIL

Lumber - Edgwood Shingles - Sash
 Fine Interior Trim - Asphalt Roofing - Wall Board
 Plaster Board - Celotex - Presdwood - Plywood

PHONES CULVER 1400—1401

181 HUMBOLDT STREET, ROCHESTER, N. Y.

N. TONAWANDA

PENN YAN

GENEVA

SUPPLY HOUSES of many kinds
 are listed in this book. A
 careful study of its possibilities
 will be of benefit to you.

Lumber and Finish

C. C. MORSE, President

WHITING B. MORSE }
 FREDERICK G. MORSE } Vice-Presidents

JOHN P. MORSE, Secretary

WM. B. MORSE LUMBER CO.

WHOLESALE AND RETAIL

Hardwood and Softwood Lumber Sash, Doors and Trim

All Types of Insulation and Accoustical Materials
Gypsum and Fibre Boards — Morsetile and Genuine Presdwood

We carry a full line of
Bay State Paints, Enamels and Varnishes

BRANCHES

OTIS LUMBER CO.
936 East Main St.

WM. B. MORSE & SONS
340 Main St. West

NORTH END BRANCH
Thomas Ave. near Stutson St. Bridge
MORSE SASH AND DOOR CO.
S. Ford St. cor. Waverly Place

Main Office, 340 MAIN STREET WEST, ROCHESTER, N. Y.

GREECE LUMBER COMPANY, Inc.

DEALERS IN

Coal, Coke, Rough and Dressed Lumber

SHINGLES and INSULATION

Office and Yard

788 RIDGE ROAD WEST - At B. & O. R. R. CROSSING
TEL. GLENWOOD 2391 ROCHESTER, N. Y.

T. G. SPENCER, Pres. and Treas Established 1832 B. E. OSTRANDER, Secy.

HOLLISTER LUMBER COMPANY, Ltd.

WHOLESALE AND RETAIL

Lumber and Coal

FINE INTERIOR WOODWORK

Office, 100 ANDERSON AVENUE - - ROCHESTER, N. Y.
Telephone Monroe 1663

OTIS LUMBER CO.

BRANCH OF THE W. B. MORSE LUMBER COMPANY

LUMBER

WALLBOARD

PAINTS

INSULATION

OFFICE and YARD

936 EAST MAIN STREET

Phones MONROE 43-44

ROCHESTER, N. Y.

A. F. STAHL
Pres-Treas.M. A. STAHL
Vice-Pres.W. F. STRANG
Secretary**ROCHESTER LUMBER COMPANY**

2040 East Avenue

Phone: Monroe 1345

ROCHESTER, N. Y.

STEPHEN ZIELINSKI

Wholesale and Retail Dealer in all Kinds of

Lumber - Interior Trim

Hardware, Paints and Building Materials

Phone STONE 2603

1115 HUDSON AVENUE - - - ROCHESTER, N. Y.

If it weren't for the false notion about the high price of a directory hundreds of people would no longer deny themselves the information to be found in one.

*Telephone GENESEE 92***THE AMERICAN LAUNDRY
MACHINERY COMPANY**

MANUFACTURERS OF

***Laundry, Dry Cleaning
and Rug Cleaning
Machinery***

OFFICE and FACTORY

110 BUFFALO ROAD between N. Y. C. R. R. and Glide St.

**ASHLEY MACHINE WORKS, Inc.
ROCHESTER, N. Y.**

CONTRACT MACHINE WORK IN ALL BRANCHES

*Machine Designers
Machine Parts**Screw Machine Products
Builders of Machinery*

Office and Factory, 714 UNIVERSITY AVENUE

Phone MONROE 99

DAVENPORT MACHINE TOOL CO.

INCORPORATED

Manufacturers of

The Davenport 5-Spindle Automatic Screw MachineCapacity— $\frac{1}{2}$ " diam. x 2" long. $\frac{5}{8}$ " diam. with Oversize Feed Tubes

Maximum production and accuracy guaranteed on all work within its capacity

167 AMES STREET

Tel. Genesee 3162

ROCHESTER, N. Y.

PATCHEN & HOEFLER

Phone 4154 MAIN

MACHINISTS

Repairing printing machinery. Machine jobbers of all kinds. Knives ground for planers, squaring shears, paper cutters, etc. Estimates furnished on all kinds of machinery. Punches and dies of all kinds for sheet metal workers, metal patterns, model making, etc. Also stamping.

40 AQUEDUCT STREET

-

PHONE MAIN 4154

A. W. FROMEN, President

MANUFACTURERS TOOL & DIE CO., Inc.

Makers of

TOOLS .. DIES .. FIXTURES

Special Machinery, Stampings and
Experimental Machine Work

Phone MAIN 6149

24 VERONA STREET

-

-

-

ROCHESTER, N. Y.

DO YOU KNOW?

THAT the **Directory** of your city is on file in your Public Library, 54 Court St. and Directory Libraries in all of the principal cities of the United States and Canada and that information about you is in it accessible to anyone?

ARE YOU PROPERLY DISPLAYED IN IT?

ROCHESTER IRON & METAL CO., Inc.

325 ST. PAUL STREET

237 MT. READ BOULEVARD

SCRAP IRON - PLUMBERS LEAD - SCRAP METALS

NEW AND SECOND HAND RAILS, PIPE, I BEAMS,
REINFORCING BARSSECOND HAND MACHINERY, FACTORY EQUIPMENT
AND OFFICE EQUIPMENT

Phone MAIN 464

ROCHESTER, N. Y.

ROCHESTER LEAD WORKS, INC.*Manufacturers of and Dealers in*

STAR ★ BRAND

LINOTYPE

INTERTYPE

MONOTYPE

STEREOTYPE

ELECTROTYPE

Lead Pipe, Solder and Babbitt Metal

COMBINATION FERRULES, LEAD TRAPS and BENDS

Tin-Lined and Pure Tin Pipe, Wedge Strip for Setting Granite
Pig Lead, Pig Tin, Sash Weights, Sheet Lead, etc.

WIRE SOLDER A SPECIALTY

Phones MAIN 1154-1155

380 and 382 EXCHANGE STREET

- ROCHESTER, N. Y.

THE SIDNEY B. ROBY COMPANY***Iron and Steel—Mill Supplies***

Bicycle and Automobile Supplies

—DISTRIBUTORS—

..MARIETTA PAINT..

SECURITY ROLL ROOFING, ASPHALT SHINGLES and ROOF COATINGS

208-214 SOUTH AVENUE, ROCHESTER, N. Y.


Telephones: STONE 1129-1130-1131-1132

Good BusinessYour Name listed in bold-faced
type in the City Directory, under
every heading that describes your
product.***—Moderate Expense***

LELAND WESTON LOWE CO.

BUSINESS ESTABLISHED IN 1831
 MANUFACTURERS OF DISTINCTIVE DESIGNS
 PRELIMINARY SKETCHES AND ESTIMATES
 SUBMITTED WITHOUT OBLIGATION

MONUMENTS GARDEN
 FURNITURE
 BAPTISMAL FONTS
 SUN DIALS
 BRONZE TABLETS **MAUSOLEUMS**

Studios at
 1132-1138 Mt. Hope Avenue
 Opposite south entrance to
 Mount Hope Cemetery 

**JOHN H. MCGEE
& SON**

*Monuments and
 Headstones*

**508 STATE STREET
 ROCHESTER, N. Y.**

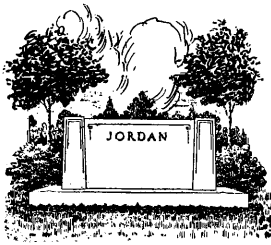
Main 854

**T. H. MARRION & CO.
 MONUMENTS
 MAUSOLEUMS**

Phone MAIN 7522

**476 STATE STREET, Cor. Vincent St. So.
 ROCHESTER, N. Y.**





TROTT BROTHERS CO.

INCORPORATED

**Monuments - Headstones
Mausoleums**

CEMETERY LETTERING AND RESTORING

1120 MT. HOPE AVENUE ROCHESTER

Monroe 73

BUILDERS OF MEMORIALS FOR OVER
HALF A CENTURY

MODERN DESIGNS AT MODERATE PRICES ON DISPLAY IN OUR NEW STUDIO

Are You Leaving A Record For The Future?

It may prove a serious matter in years to come if by any chance you should be incorrectly listed in or left out of the City Directory. Cases have occurred where the evidence of the City Directory, as to residence or occupation, has had an important bearing on the disposal of a fortune. Business men, especially, should see to it that their firm's record is absolutely correct and all changes should at once be reported.

"Better Be Safe Than Sorry"

A small amount invested will list you under several lines of your business.

SAMPSON & MURDOCK CO.

179 LINCOLN STREET - - BOSTON, MASS.

THE WORLD'S BEST MUSICAL MERCHANDISE

Pianos — Phonographs — Records — Musical Instruments
Radio — Sheet Music — Skilled Repair Department, Etc.

Convenient Payments

Your present instruments taken in trade

WHEN YOUR WANTS ARE MUSICAL COME TO



HOME OF THE STEINWAY PIANO

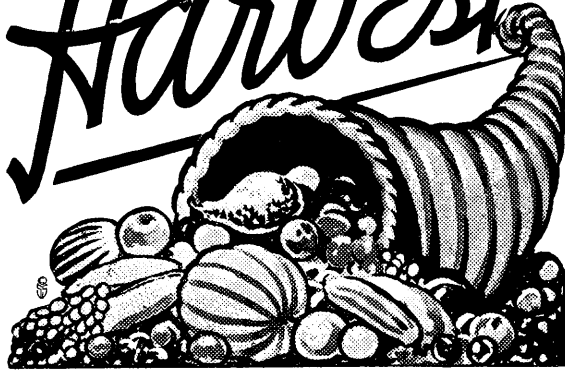
PHONE MAIN 158

Please mention this Directory when dealing with Advertisers

REAP
YOUR

Harvest

from SALES
and BUYING
OPPORTUNITIES



in the ROCHESTER

MAIN
7000

JOURNAL-AMERICAN

MAIN
7000

CLASSIFIED WANT ADS

Quick

..

Accurate

..

Reliable

ROCHESTER'S GERMAN DAILY

ABENDPOST

is an evening daily newspaper delivered directly into the homes in all sections of the city and suburbs. It is a

HOME NEWSPAPER

carefully read by the large German population of Rochester and surrounding towns.

FROM COVER TO COVER

The contents of the City Directory are interesting, valuable and useful.

A complete catalog of the city; it's government, social and fraternal organizations, inhabitants, and industries. Carefully compiled annually

IT'S DEPENDABLE

Please mention this Directory when dealing with Advertisers

You Cannot Sell

Your merchandise through newspaper advertising in homes where the newspaper you are using does not go.

That is why successful, growing, money-making stores use the Democrat and Chronicle.

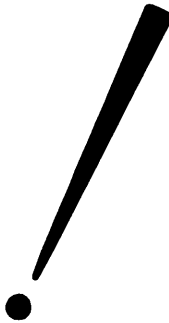
To make money from your advertising, *demand* detailed A. B. C. Audit circulation figures from your newspapers and use the newspapers which can carry your selling messages into the largest number of homes. Remember, that every 5,000 average homes in New York State spend \$14,534,500.00 each year.*

Democrat  **Chronicle.**

Rochester's Morning Gannett Newspaper

* According to 1934 Survey

First Choice



*More Rochester Families read
The Times-Union than any
other Rochester publication.*

As an advertising medium The Times-Union is first choice among Rochester merchants—on the basis of time-tested result-power in the evening field.

ROCHESTER TIMES-UNION

Please mention this Directory when dealing with Advertisers

The Largest Newspaper Publishers in Rochester

THE JEWISH LEDGER

PHONE MAIN 4420

*Where Your Advertising Dollar attracts the Greatest
Purchasing Power*

There is Something
You need in your Business

This book has helped many to find what they want.

Perhaps it can help you.

Better look it over carefully.

M. J. BROWN, Vice-Pres.
J. A. KUSSE, Sec.

D. C. BROWN, Pres.

E. F. FARRELL, Vice-Pres.
M. B. KAELBER, Treas.

BROWN BROTHERS COMPANY

CONTINENTAL NURSERIES

Established 1885

Incorporated 1890

*Growers of a Complete Line of Dependable Nursery
Stock for the World Out of Doors*

RETAIL — LANDSCAPE SERVICE — WHOLESALE

Retail Offices and Landscape Dept., 891 Garson Avenue
Wholesale Packing and Storage Bldgs., 766 Merchants Road
Penfield Farms, Atlantic Ave. & Scribner Road

Phone Culver 785
Phone Culver 785
Suburban 4702

CROWN RIBBON AND CARBON MANUFACTURING CO.

MANUFACTURERS OF HIGH GRADE

Inked Ribbons and Carbon Papers

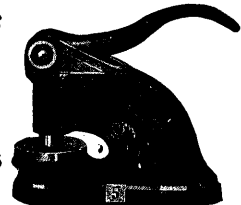
782-790 ST. PAUL STREET ROCHESTER, N. Y., U. S. A.
Phone MAIN 6840

JOHN R. BOURNE

*Desks - Chairs - Safes
Files*

Stationery and Office Supplies
Corporation Supplies

**Rubber Stamps — Stencils
Steel Stamps**



131-133 STATE STREET

PHONES MAIN 1233—1234



BAUSCH & LOMB OPTICAL COMPANY

Eye-glass and Spectacle Frames, Mountings and Lenses, Binoculars,
Telescopes, Magnifiers, Photographic Lenses, Microscopes
Projection Apparatus and other Scientific Optical Instruments

635 ST. PAUL STREET

ROCHESTER, N. Y.

America's Leading Optical Institution

THE MIDDLE MAN

THE City Directory is the Middle Man of
Buyer and Seller. You should be fully
displayed therein to increase your business.

H U M P H R E Y S

“The Paint Man”

Paint and Wall Paper

58 SOUTH AVE.

MAIN 2117

GAMROD-HARMAN CO., INC.

WHOLESALE AND RETAIL

*Paints, Glass, Brushes, Varnishes and
Washable Wall Papers*

Distributors for McDougall-Butler Paints

PHONES MAIN 3710—3711

75 EXCHANGE STREET - - ROCHESTER, N. Y.

GEORGE I. VIALL & SON

PAINT SUPPLY HOUSE

Wholesale and Retail Dealers in

PAINT, VARNISH, GLASS AND BRUSHES

Distributors of Keystone Varnish Companies Products

MAIN 733

5-7 NORTH WATER STREET

ROCHESTER, N. Y.

MENG-STEPHENS COMPANY, INC.

Manufacturers

M S C BRAND PAINT PRODUCTS

PAINTS, VARNISH, ENAMELS AND PAINTERS SUPPLIES

ROOF COATING AND CAULKING COMPOUND

IMPERIAL “WASHABLE” WALLPAPERS

SOLD DIRECT FROM OUR FACTORY

Main 491

We Deliver

601 Norton Street

Rochester, N. Y.

W. C. REMINGTON

R. J. FOWLER

W. G. FULTON

BARNARD, PORTER & REMINGTON

ESTABLISHED 1854

*Wholesale and Retail Dealers in***PAINTS, OILS, GLASS, BRUSHES, VARNISHES**

ARTISTS' MATERIALS

DRAWING SUPPLIES

PAINT SPRAY APPARATUS

Distributors for Lowe Bros. High Standard Paints

9, 11, 13 NORTH WATER STREET

Phones Main 8140—8141—8142

HUBBS & HASTINGS PAPER CO.*Paper Bags and Roofing Materials of All Kinds**Wrapping Papers and Twines*

319-325 MAIN STREET WEST

ROCHESTER, N. Y.

6702 Main—TELEPHONES—Main 6703

CLARK STEK-O CORPORATION*Manufacturers of***STEK-O**
Adhesives

including STEK-O, TIK and other Powder Pastes and Liquid Gums

Also manufacturers of Fruit Packers Supplies

1631 DEWEY AVENUE

ROCHESTER, N. Y.

FLOWER CITY SPECIALTY COMPANY*Manufacturers of*

Self-Closing

Monkey Links

Monkloth and other

Automotive Specialties

Paper Boxes

Counter Display Boxes
and Paper Specialties

Phones: Main 629 & 630

250 MILL STREET

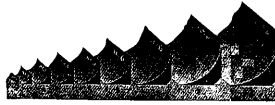
- - - ROCHESTER, N. Y.

CORBETT-STEEVES PATTERN WORKS



$\frac{1}{8}$, $\frac{1}{4}$, $\frac{1}{2}$ sharp gothic $\frac{1}{8}$, and $\frac{1}{4}$ in. brand.

PATTERN LETTERS



LEATHER FILLETS

Pattern and Model Makers

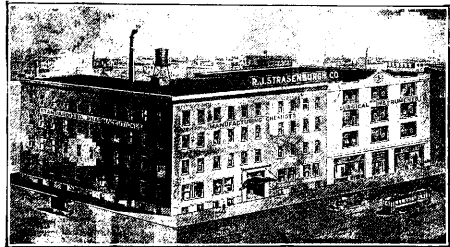
55 ALLEN STREET Telephone Main 5730 ROCHESTER, N. Y.

PHARMACEUTICAL CHEMISTS

*Manufacturers of Standardized
Pharmaceuticals*

Physician and Sick Room
Supplies also First Aid
Requirements

R. J. STRASENBURGH CO.



185-195 EXCHANGE STREET - - Phone MAIN 669

THE HURST ENGRAVING COMPANY, Inc.

Photo Engraving

DESIGNING RETOUCHING

Phone MAIN 4605

143 ANDREWS STREET ROCHESTER, N. Y.

*Are You
Properly
Listed?*

If you are in business it is to your advantage to be properly and completely listed in the classified business section under every heading where a buyer might look for you.

ORIENTAL RUGS

ETCHINGS

**GEORGE C. J. BAILEY
ART SHOP**

150 CLARISSA STREET

MAIN 2196

Corner Broad Street W.

English Silver—Antique and Modern
Brown's Shamrock Linens from Ireland

Pictures and Frames, Oil Paintings Cleaned and Restored, Mirrors, Re-Gilding, Etc.

Silverware Repaired and Replated

Dealer in ANTIQUES

APPRAISERS

R. B. OLVER

Phone Main 5560

G. F. HOLTZ

G O L D STUART-OLVER-HOLTZ Co.

*Plating, Enameling and
Metal Spinning*

LACQUERING

Manufacturers of Metal Specialties

406 PLATT ST. COR. ALLEN

ROCHESTER, N. Y.

**S
I
L
V
E
R**

HOWE & BASSETT CO., Inc.

Established 1885

Plumbing and Heating Contractors
Supplies and Equipment

“PETRO-NOKOL” Automatic Oil Burners

“RUUD” Automatic Gas Water Heaters

“PERMUTIT” Water Softeners

840-50 UNIVERSITY AVENUE

TELEPHONE MONROE 3

**WRIGHT & ALEXANDER CO.
.. CONTRACTORS..**

Heating, Plumbing and Power Plant Installations

Jobbers of Supplies

Sprinkler Installation Contractors

Chemical Fire Extinguishers and Supplies

HART OIL BURNERS

Telephones: Main 1056—6828

21-23 OTSEGO STREET

..

ROCHESTER, N. Y.

Supplies For } **PLUMBERS, STEAMFITTERS, TINNERS**
ENGINEERS and FACTORIES

Distributors of **WALWORTH VALVES AND FITTINGS**

W. A. CASE & SON MFG. CO.

72-90 ST. PAUL STREET

Phones Main 3404—3405—3406

ESTABLISHED 1860

TELEPHONE MAIN 540

William E. Sloan
 William E. Sloan, Jr.



Guilford R. Adams
 Daniel L. VanHee

When contemplating building, visit our Show Room display for your selection of fine

PLUMBING and HEATING EQUIPMENT

SAMUEL SLOAN & COMPANY

Wholesalers Plumbing and Heating Supplies

67-69-71 EXCHANGE STREET - - ROCHESTER, N. Y.

BARR & CREELMAN

Plumbing & Heating Engineers & Contractors

We Are At Your Service For The Small Job
 As Well As The Large One

See Us For Your Plumbing and Heating Requirements

74 EXCHANGE STREET


Phones MAIN 6465-66-67


LOUIS HEINDL & SON

..PRINTING..

149-151 ANDREWS ST., ROCHESTER, N. Y.

Phone MAIN 666

H. C. Barnes, <i>Vice-President</i>		K. H. Walsh, <i>Secretary</i>	
			
Wegman-Walsh Press [Inc.]			
<i>Established 1877</i>			
13 to 23 SOUTH WATER STREET		MAIN 568	
Printers Engravers Linotypers Binders			Stationery Fine Catalogs Direct Advertising
<i>Printing As Wanted When Promised</i>			

CATALOGUE BUILDERS • PROCESS COLOR PRINTERS • SCHOOL ANNUALS		
<p style="text-align: center;">THE</p> <p style="text-align: center;">DU BOIS</p> <p style="text-align: center;">PRESS</p> <p style="text-align: center;">Creators and Designers of DIRECT MAIL ADVERTISING</p>		<p>Alert advertisers are now demanding catalogues that are more than a mere listing of their products; they want books that are <i>sales forces</i>—that present the same well-planned sales arguments that the star salesman uses. We are serving a large clientele with this effective type of sales medium; and we can be of help to you also.</p>
637 BROADWAY • Phones: Monroe 6755-6756 • ROCHESTER, N. Y.		

A Public Service Publication

Few lines of Business have such a varied clientele as has the City Directory. It serves high and low, rich and poor, with equal impartiality and with profit to all.

It answers the questions *What?* and *Who?* which arise in daily Business and fills a position occupied by no other publication under the sun. It is often used from its issue until it falls to pieces and seldom will you find one entirely discarded while its leaves cling together. A publication which is used so universally and whose life is so long, must appeal to every shrewd business man as a most desirable advertising medium.

LIST OF OUR PUBLICATIONS

Albany and Rensselaer§¶®.....	\$10.00
Attleboro and N. Attleboro§†¶®..	8.00
Auburn§¶®	8.00
Boston§¶	25.00
Boston Blue.....	5.00
Cranston§*¶®	8.00
Danielson*¶	5.00
East Providence§†¶®	8.00
Fall River§¶®.....	8.00
Gloucester and Rockport†¶®....	8.00
Hopkinton*¶	5.00
Jamestown and New Shoreham†..	4.00
Lakeville†¶	4.00
Lawrence§¶®	8.00
Lowell§¶®	8.00
Lynn§¶®	8.00
Malden§*¶®	8.00
Manchester§¶®	8.00
Mass. Mfrs*.....	15.00
Mystic, Stonington and Noank†¶	5.00
New England††.....	15.00
Newburyport and Amesbury†¶...	6.00
Newport§¶®	8.00
Newton§¶®	8.00
Oswego*¶§	8.00
Pawtucket and Central Falls§¶®	9.00
Providence¶	10.00
Providence House*®.....	8.00
Rochester§¶	12.00
Rochester Suburban§¶®.....	12.00
Syracuse§¶	10.00
Taunton¶§®	8.00
Troy, Cohoes & Green Island¶§®	10.00
Waltham§†¶®	8.00
Westerly*§¶®	7.00
Woonsocket§¶®	8.00
Worcester¶	10.00
Worcester House†®	10.00

*Denotes books issued in odd years.

Prices subject to change without notice

†Denotes books issued in even years.

‡Denotes books containing House Directories.

¶Denotes books containing Wives' Names.

®Denotes books containing Property Owners.

††Last issue 1928. Date of next issue uncertain.

*Latest Directories of all Cities for Sale at publishers' prices***SAMPSON & MURDOCK CO., Inc.**

179 LINCOLN STREET

- BOSTON, MASS.



*There is Nothing Finer Than A
Stromberg - Carlson*

STROMBERG-CARLSON TELEPHONE MFG. CO.
100 CARLSON ROAD, ROCHESTER, N. Y.

Stromberg-Carlson

PHILCO HOME and
AUTO
RADIOS

*Tubes—Batteries—Replacement Parts—Expert Radio Service
Complete Public Address Systems—Radio Parts for Amateurs*

BEAUCAIRE, Inc.

228-230 BROADWAY - - - PHONE STONE 5694-5695



NEW YORK STATE CAPITOL
ALBANY, N. Y.

NORBERT STREB CO.

Realtors

..REAL ESTATE..

Bought .. Developed .. Financed .. Managed
Rented .. Sold

223 POWERS BLDG.

Main 4579

YATES & McINTOSH, Inc.

Real Estate

INSURANCE

MAIN 250 and 251

25 EXCHANGE STREET



Sales Exchanges

Rentals and Property Management

ROCHESTER, NEW YORK

Leases
Home Building
Residential Sales



Mortgage Money
Appraisals
Management of Property

INSURANCE - INDUSTRIAL SITES

1014 Lincoln Alliance Bank Building, Main at Stone Sts.

Phone STONE 633

What better aid to the memory than the Classified
List in the City Directory

Consult it for your wants

HENRY T. PERKINS REAL ESTATE CO.

PROPERTY MANAGEMENT

SALES — RENTALS — LEASES

31 EXCHANGE STREET

Phones Main 3309-10-11

C. H. MORSE & SON

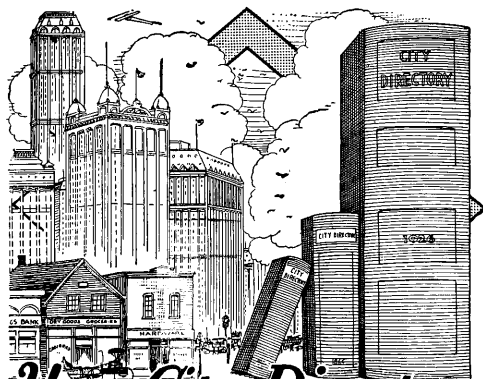
HENRY W. MORSE, Proprietor

Air Cushion Rubber Stamps

Stencils, Seal Presses, Badges, Numbering
Machines, Stencil Cutting
Machines

15 SO. WATER STREET ROCHESTER, N. Y.

Phone MAIN 1291



Your City Directory — Grows with the City

SAMPSON & MURDOCK CO., Inc.

Directory Publishers Since 1846

179 LINCOLN STREET

BOSTON, MASS.

Please mention this Directory when dealing with Advertisers

THE SCHOOL OF COMMERCE

362 EAST AVENUE, ROCHESTER

ADVANCED COURSES

IN

BUSINESS EDUCATION

Special Medical Secretarial Courses

Ask For Information

Call MAIN 5530—5531

CHAS. H. VICK
President

H. L. GLEN
Vice-Pres.

GEO. B. HART
Sec. and Treas.

HART & VICK, INC.

ONE OF AMERICA'S FINEST SEED STORES

Seedsman and Plantsmen

QUALITY EXCLUSIVELY

Corner STONE and ELY STREETS

ROCHESTER, N. Y.

MAIN 1201

ERDLER PERFORATING COMPANY

MANUFACTURERS OF

PERFORATED SHEET METALS

Metal Sample Plate Furnished on Application

Prompt service, Large stock of Sheet Metal always on hand

Send Specifications for Prices

Telephone Genesee 2608

Office and Factory, 171 YORK ST.

ROCHESTER, N. Y.

MR. BUSINESS MAN!

DON'T USE AN OLD DIRECTORY

This Directory is issued ANNUALLY. No other medium in the world gives the information contained herein, therefore it is CONSULTED DAILY FOR TWELVE MONTHS until a new edition is issued.

What better medium to gain
publicity for your advertisement?

KNOWLES & PECK CO., Inc.

Tin, Copper and Architectural Galvanized Iron Works,
Slate, Tile, Tin, Slag and Ready Roofing

BARRETT'S BONDED ROOFS

General Jobbing

Estimates Furnished on Application

80 FRANKLIN STREET .. ROCHESTER, N. Y.

Office Phone: STONE 1119

Call - FLESCH & SCHMITT, Inc. - Main 5234

for

ROOFING Copper—Tin—Tile—Slate
Slag and Asphalt

Roofing, Ventilating and Sheet Metal Contractors

MAIN 5234

60 BROWN STREET, ROCHESTER

Maps of Rochester

Folded in Pocket Form with Complete
Street Index, **Fifty Cents** each.

SAMPSON & MURDOCK CO., Inc.

729 POWERS BUILDING

ROCHESTER, N. Y.

RICHARDSON CORPORATION

Manufacturers of

"Maid of Honor" Syrups, Crushed Fruits and Sundaes for Soda Fountains
Liberty Fruit Drinks and Reddy Chocolate. Liberty Root Beer
and Fruit Drink Dispensing Equipment. Ice Cream Flavors
Glace Fruits and Bakers Supplies.

Telephones—Glenwood 307, 308, 309

After 5 P. M., Saturday Afternoons, Sundays and Holidays call Glenwood 307

1069 LYELL AVENUE

- -

ROCHESTER, N. Y.

Soda Fountain Supplies—Steam, Mill Supplies—Steel & Iron 145

J. HUNGERFORD SMITH CO.

Manufacturers of

*Soda Fountain Fruits and Flavors
and*

CREAM PAK Ice Cream Specialties

410 NO. GOODMAN STREET - ROCHESTER, N. Y.

Telephones Culver 157-158-159

HAYERSTICK & CO., Inc.

*Engineering and Industrial
Supplies and Equipment*

Golf Course, Estate and Park Equipment

45-49 FORD STREET

PHONES MAIN 70-71-72

BARR & CREELMAN MILL & PLUMBING SUPPLY CO.

*Mill, Steam, Plumbing,
Contractors Supplies*

66-70 EXCHANGE STREET

- Phones MAIN 6465-66-67

YOUNG'S WROUGHT IRON W'KS.

*Ornamental Steel, Bronze,
Iron and Aluminum for Buildings*

Stairs, Fire Escapes, Railings, Picket Fences, Flag Poles, Pipe Railings,
Cellar Doors, Rods, Bolts, Scaffold Brackets, Forgings, Plate-Work,
Grilles, Trench Covers, Coal Holes, Joist Hangers, Postcaps.

39 SOUTH WATER STREET

Established 1884

MAIN 1755

BURKE STEEL CO., INC.

P. O. BOX
514

STEELS



SHEETS

ELECTRICAL
SUPPLIES

BLACKSMITH
SUPPLIES

TOOLS

PIPE

FORGING
SPECIALISTS

30 SHERER STREET

GENESEE 3445

COOK IRON STORE CO.

Iron, Steel and Heavy Hardware

Supplies For

BLACKSMITHS, CONTRACTORS, PAINTERS
GARAGES AND FACTORIES

120-128 ST. PAUL STREET

Tels. MAIN 5188-5189

F. L. HEUGHES & CO., Inc.

Members of The American Institute of Steel Construction

ENGINEERS, DESIGNERS AND FABRICATORS OF

**STRUCTURAL STEEL AND IRON WORK
FOR BUILDINGS, BRIDGES, ETC.**

**ELECTRIC WELDED
STEEL TANKS, VATS AND KETTLES**

ALL STRUCTURAL SHAPES AND REINFORCING BARS CARRIED IN STOCK

Phone or Write for Catalog

COMPLETE WAREHOUSE STOCK

Office and Works

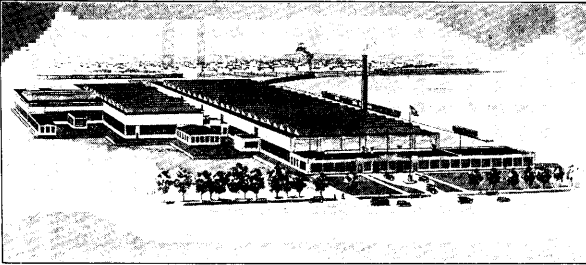
1029 LYELL AVENUE

Phone Glenwood 590 — 591

Telephone MONROE 2362

MONROE WAREHOUSE COMPANY, Inc.

MILLION DOLLAR WAREHOUSE

**Largest Merchandise and Automobile
Storage in Rochester**

Capacity 500,000 Square Feet—Sprinkled Throughout

We have heated space to rent for manufacturing
All tenants have use of New York Central siding**Offices and Warehouses - 1044 UNIVERSITY AVE.****Call BLANCHARD First****For STORAGE**Fire-proof and Non-Fire-proof
Household Goods and Merchandise**For SHIPPING**

Anywhere, Pool Car Distribution

For REPAIRING

Of Furniture, by Craftsmen

For MOTH-PROOFING

At Your Home, Without Inconvenience

For MOVINGLocal and Long Distance
Hauling Agent, Allied Van Lines**For PACKING**

China, bric-a-brac, etc., by Experts

For RUG CLEANING

Shampooing and Repairing

For FUMIGATION

Guaranteed Moth Destruction

*Phone for Quotation***BLANCHARD STORAGE CO., Inc.**

Broad at Oak Street

Main 7021

How to Make This Book Serve You!

The City Directory may be used to great advantage in supplementing and rounding out your newspaper publicity. Put—"We are listed in the directory" in your copy. Tie up all your advertising to the directory with the above phrase. Then see to it that you are properly represented under all the business listings applicable to your business. The phrase will stick long after the newspaper has been mislaid and people will get in the habit of looking for your name when ready to purchase goods which you carry. Thus will the interest aroused by your newspaper display be extended and preserved for your future benefit

ROCHESTER STORAGE WAREHOUSES

Fireproof and Non Fireproof

Household Goods and Merchandise

Moving — Packing — Shipping

Phone Main 205

Offices, 25-27 WASHINGTON ST. N.

SERVICE STORAGE CO.

Owned and Operated by FRED C. WEST



*A warehouse well worth seeing before
storing your valuable*

HOUSEHOLD FURNISHINGS
MERCHANDISE MANUFACTURED GOODS
AUTOMOBILES

in a heated building, Fireproof

SPRINKLER SYSTEM—LOW INSURANCE—R. R. SIDING

704-712 CLINTON AVENUE, SO.

Phone MONROE 2833

COOLER AND SHARP FREEZER SERVICE FOR ALL FOOD PRODUCTS
GENERAL MERCHANDISE STORAGE AND FORWARDING

THE UPTON COLD STORAGE CO., INC.

HERBERT B. CASH, President and General Manager

Open the Year Round *Established 1902* *Lowest Insurance Rates*

Route all cars in your name care of The Upton Cold Storage Co., Inc.
N. Y. C. Lines, State St. Delivery

Switching Connections with All Railroads *Storage in Transit Privilege*

Correspondence Solicited. No pipes in rooms. No Dripping Moisture to cause mould
Refrigeration protected by TWO POWER PLANTS, Steam and Electric

38 CLIFF STREET

Main 1494

ROCHESTER, N. Y.

TELL BUYERS

What you do and how you do it. Your Business represented in this book will carry your sales talk into offices, factories, hotels and others in all the principal cities in this country and Canada. We have over 14,000 pleased patrons who are taking advantage of this Silent Salesman.

SAMPSON & MURDOCK CO., Inc.

179 LINCOLN STREET

- -

BOSTON, MASS.

ROCHESTER SHOW CASE WORKS, Est. 1853
STORANDT INDUSTRIES, Inc., Est. 1891

Manufacturers of

SHOW-CASES (diamond cushion cemented)

STORE FIXTURES AND BOOTHS

LABORATORY FURNITURE

OPEN DISPLAY SECTIONAL WALL UNITS FOR DRUG STORES

404 PLATT STREET, Corner ALLEN

Telephone Main 5750

PARTY LINE TELEPHONE RULES

When making a telephone call, remove the receiver and listen. If the line is in use, replace the receiver immediately and wait for a few minutes before trying again.

The length of a conversation should in no case exceed five minutes, and you are requested to make it as brief as possible. Allow an interval of a few minutes to elapse before calling another party, as someone on your line may be waiting to make an emergency call.

Do not tolerate anyone to listen at your telephone when the line is in use.

ROCHESTER TELEPHONE CORPORATION

When you want to know how to spell a word you look in the dictionary. When you want to know how to spell a name or get a correct address you look in the directory which is the business dictionary of your city. Your Advertisement properly displayed in the directory of your city will register your products or services in the mind of the prospective customer and get results.

SAMPSON & MURDOCK CO., INC.

Directory Publishers

179 Lincoln Street

-

-

Boston, Mass.

LOCATED on West Avenue, three blocks from Genesee Street, Taylor Instrument Companies is the world's largest manufacturers of temperature instruments. Here Rochester workers make thermometers, barometers, gauges, compasses and hundreds of other instruments that are included in the well-known Taylor and Tycos line of products. We are always ready to serve your needs whenever you require accurate, dependable equipment for your home, your office or your factory.

Taylor Instrument Companies

WEST AVENUE and AMES ST., ROCHESTER, N. Y.
 SERVING INDUSTRY — THE PROFESSIONS — AND THE HOME

NELL BROS. & KERN

ESTABLISHED IN 1872

Interior Marble and Tile Work
Rubber and Cork Floors Fireplace Equipment
Granite and Marble Monuments
Mausoleums

TELEPHONE MAIN 1074

151-153 MT. HOPE AVENUE - ROCHESTER, N. Y.

You Use a Directory

To tell you who handles the product you are looking for and where to buy it.

To tell you where the person you are looking for can be located.

SAM GOTTRY CARTING COMPANY*For Any Moving Service*

Railroad Freight Shipping and Packing Long Distance Moving
Safes, Machinery, Boilers, Etc.

..POOL CAR DISTRIBUTION..*We Specialize in Furniture and Piano Moving*

OFFICES and GARAGES

47 PARKWAY- - - - *Telephone GLENWOOD 646*

MOTOR VANS for LOCAL and LONG DISTANCE MOVING

CLANCY

CARTING & STORAGE CO., Inc.

(SERVICE SINCE 1885)

Furniture, Freight — **MOVERS** — Pianos, Baggage**STORAGE WAREHOUSE***Residence***111 PARSELLS AVENUE***CULVER 2014**Office and Warehouse***3-5-7-9-11 GRAND AVENUE***CULVER 1714***EAST END CARTING COMPANY***Local and Long Distance Moving**Storage Warehouse*

Our central location, complete equipment and our earnest desire
to have only satisfied customers insure excellent service for all.

CORRESPONDENCE SOLICITED

*Affiliations in All Principal Cities for Storage and Long Distance Moving***91 FROST AVENUE****Genesee 1646****ROCHESTER, N. Y.**

GEORGE F. R. ECKHARDT
Vice Pres.

RUDOLPH G. WEIS
Secretary

ROCHESTER CARTING COMPANY*Storage Warehouse*

HANDLERS OF

Railroad Freights, Safes, Machinery, Furniture, Etc.**Offices, 25-27 WASHINGTON ST. N.****Phone MAIN 205**

152-192

*Trunks**Wire Works**Womens Apparel***“LIKLY’S”**

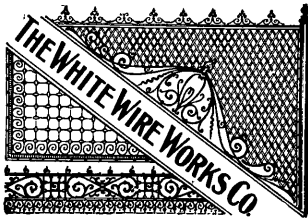
SINCE 1844

ROCHESTER'S LEADING LUGGAGE STOREWARDROBE TRUNKS
DRESS TRUNKS
STEAMER TRUNKS
TRAVELING BAGSGLADSTONE BAGS
SUIT CASES
LADIES HAND BAGS
SMALL LEATHER GOODSCOSTUME JEWELRY
UMBRELLAS
GIFT NOVELTIES
TRAVELING CLOCKS*Golf Bags and Accessories**Fitted Suit Cases and Bags*We Manufacture Auto Trunks, Sample Trunks, Cases, Portfolios
and All Kinds of Luggage

271 MAIN STREET EAST

— ONLY ONE STORE —

PHONE STONE 915



Manufacturers of

Brass, Iron and Wire Work

OF ALL KINDS

Sheet Brass, Rod, Tubing, Etc.

79-83 Exchange Street

Rochester

Phone 441 Main

A Store of Separate, Segregated Shops, Specializing
in Every Phase of Fashionable Feminine Apparel and
Accessories, and in the Various Aids to Charm

B. FORMAN CO.

Clinton Avenue South

- Cortland Street

TOO LATE THIS YEAR?

Then arrange NOW to have your name properly
listed and your business classified and cross-
indexed in the next edition of this book. It costs
less to be properly listed than to be left out.

Write to the publishers